

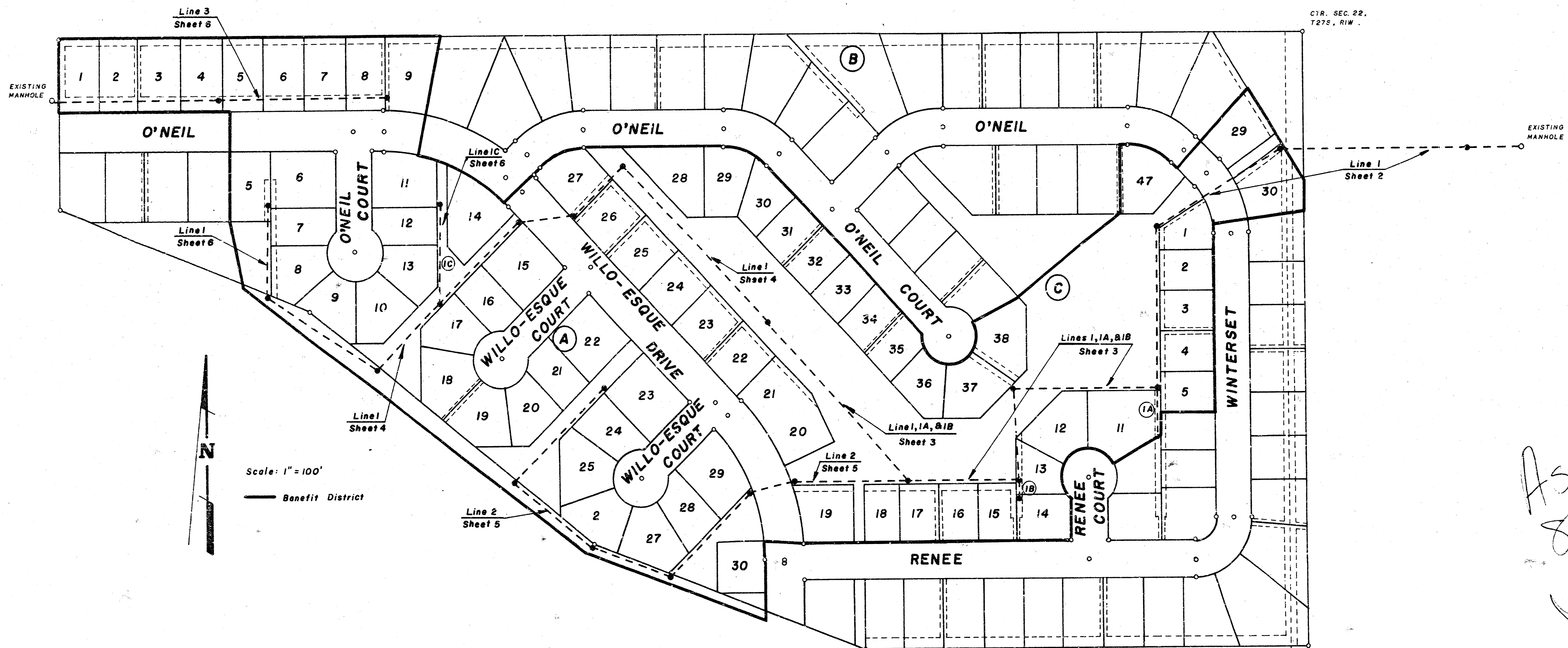
LATERAL 5, MAIN 6, SOUTHWEST INTERCEPTOR

City of Wichita, Kansas

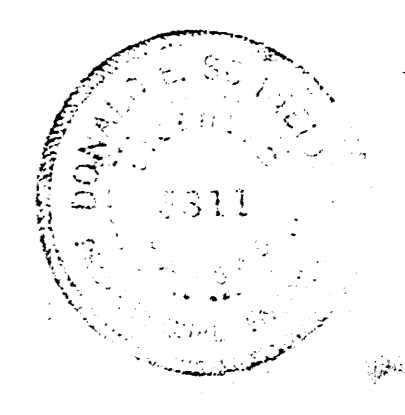
R. W. BRUGGEMAN: DIRECTOR OF ENGINEERING / CITY ENGINEER

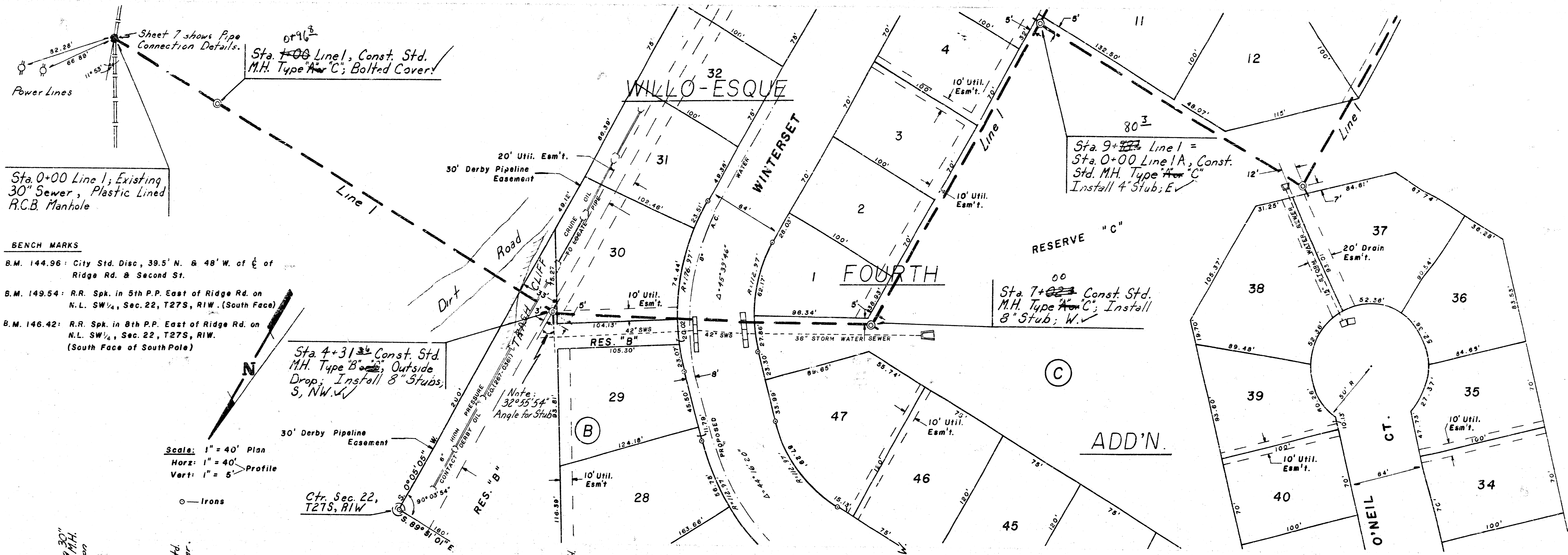
DATE:

PROJ. NO. 468-75-245-80891-000-000-00!



As Built
8/8/08
JdB





Sta. 0+00 Line 1; Existing 30" Sewer, Plastic Lined R.C.B. Manhole

Sta. 1+00 Line 1, Const. Std. M.H. Type "A" C; Bolted Cover.

Sta. 9+78.4 Line 1 = Sta. 0+00 Line 1A, Const. Std. M.H. Type "A" C; Install 4" Stub; E

Sta. 7+00 Const. Std. M.H. Type "A" C; Install 8" Stub; W.

Sta. 4+31 Const. Std. M.H. Type "B" C; Outside Drop; Install 8" Stubs; S, NW.

Note: 32°55'54" Angle for Stub

Sta. 9+78.4 Line 1 = Sta. 0+00 Line 1A, Const. Std. M.H. Type "A" C; Install 4" Stub

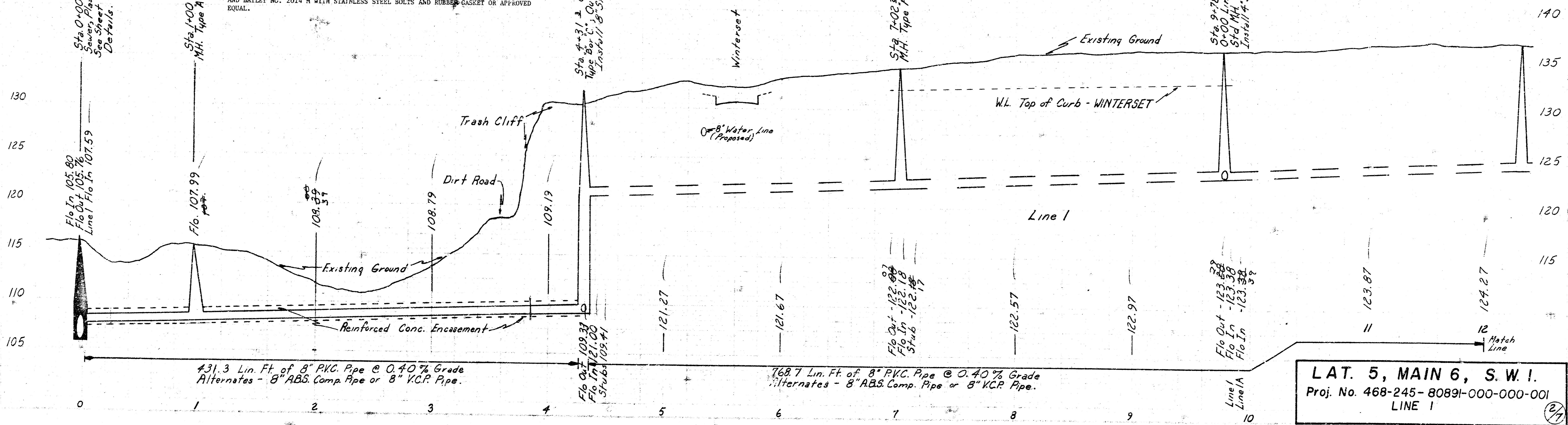
- BENCH MARKS**
- B.M. 144.96: City Std. Disc, 39.5' N. & 48' W. of E of Ridge Rd. & Second St.
 - B.M. 149.54: R.R. Spk. in 5th P.P. East of Ridge Rd. on N.L. SW 1/4, Sec. 22, T27S, R1W. (South Face)
 - B.M. 146.42: R.R. Spk. in 8th P.P. East of Ridge Rd. on N.L. SW 1/4, Sec. 22, T27S, R1W. (South Face of South Pole)

Scale: 1" = 40' Plan
 Horiz: 1" = 40' Profile
 Vert: 1" = 5' Profile



○ Irons

NOTE: OUTSIDE DROPS SHALL BE CONSTRUCTED ON MANHOLE AT STATION 4 + 31.3 ON LINE #1 TO FACILITATE FUTURE SEWER CONSTRUCTION SOUTH AND NORTHWEST. OUTSIDE DROPS SHALL BE INSTALLED SUCH THAT THE FLOW ELEVATION IN OF THE UPPER PIPES WILL BE AN ELEVATION OF 119.00 AND THE FLOW ELEVATION IN OF THE LOWER PIPES WILL BE AN ELEVATION OF 109.41. BOLTED DOWN COVER FOR MANHOLE AT STATION 1 + 00 ON LINE #1 SHALL BE CLAY AND BAILEY NO. 2014 W WITH STAINLESS STEEL BOLTS AND RUBBER GASKET OR APPROVED EQUAL.



LAT. 5, MAIN 6, S.W. I.
 Proj. No. 468-245-80891-000-000-001
 LINE 1

Scale: 1" = 40' Plan
 Horiz. 1" = 40' Profile
 Vert. 1" = 5' Profile

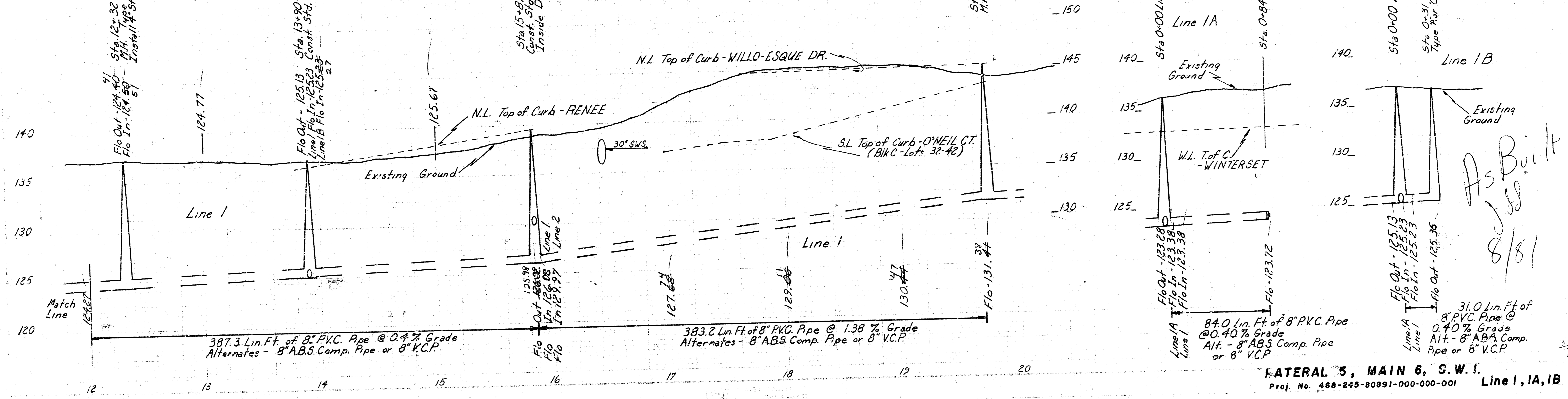
Sta. 12+32.7 Const. Std. M.H. Type "C"; Install 4" Stubs, E, W.

Sta. 13+90.1 Line 1 = Sta. 0+00 Line 1B; Const. Std. M.H. Type "A" or "C"; Inside Drop, Line 2.

Sta. 15+87.2 Line 1 = Sta. 0+00 Line 2; Const. Std. M.H. Type "A" or "C"; Inside Drop, Line 2.

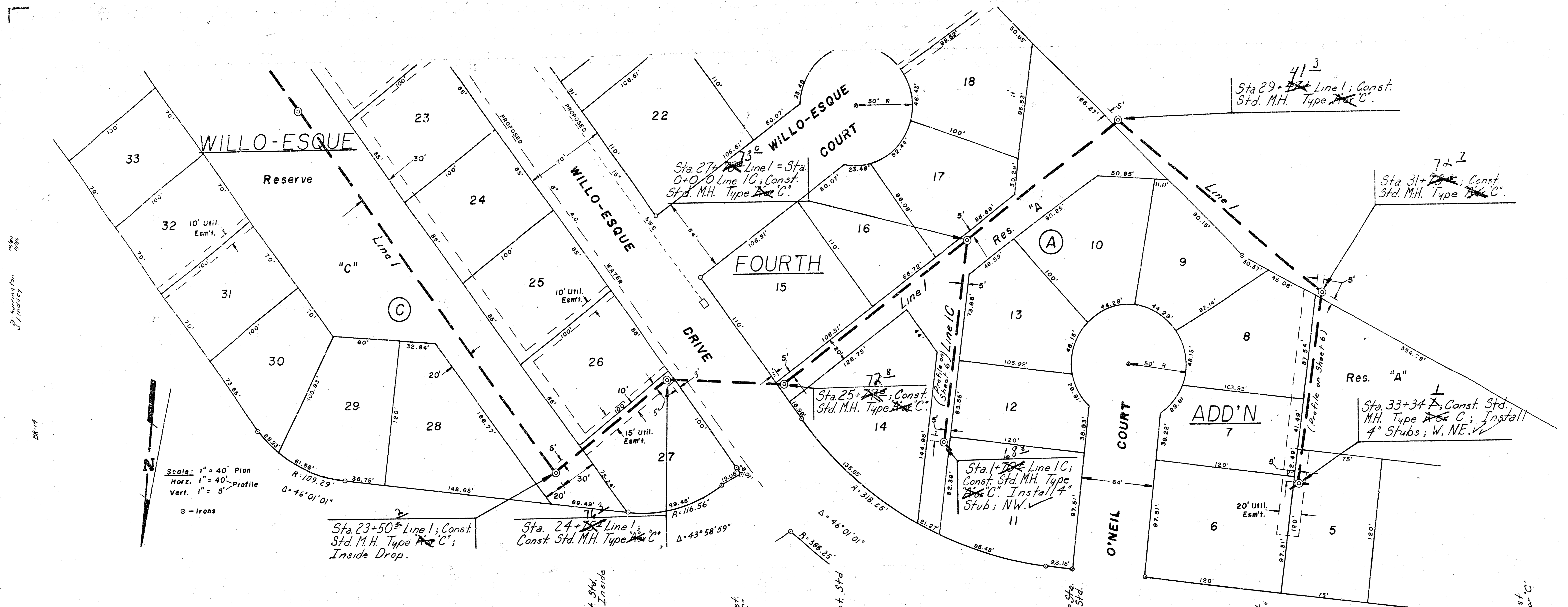
Sta. 19+70.0 Const. Std. M.H. Type "A" or "C";

Sta. 0+00 Line 1B = Sta. 13+90.1 Line 1; Const. Std. M.H. Type "C"; Install 4" Stubs, E, W.

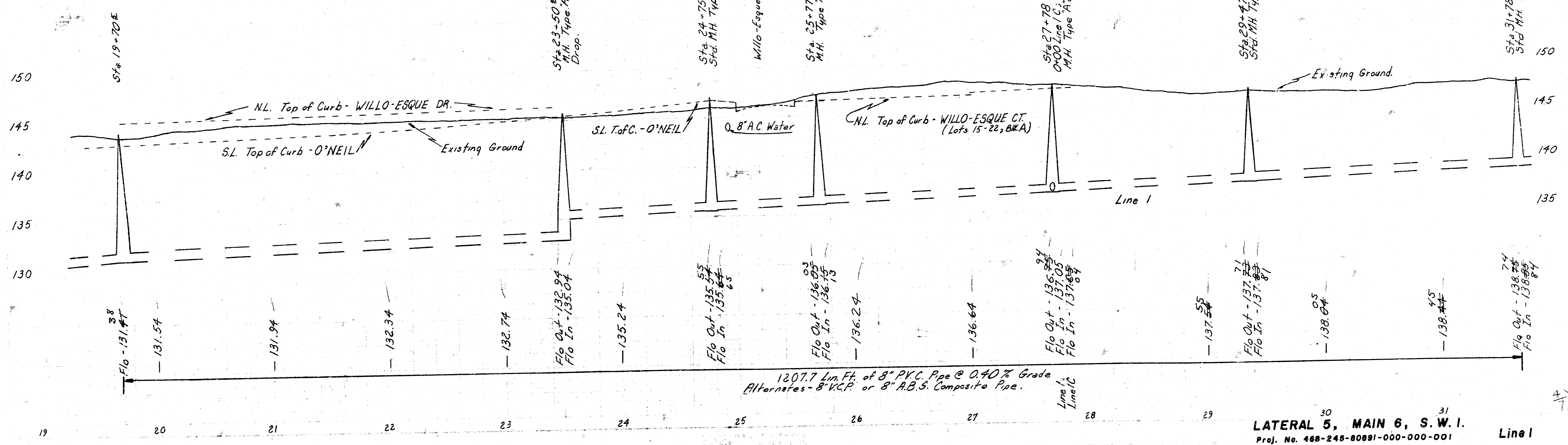


As Built
 JES
 8/81

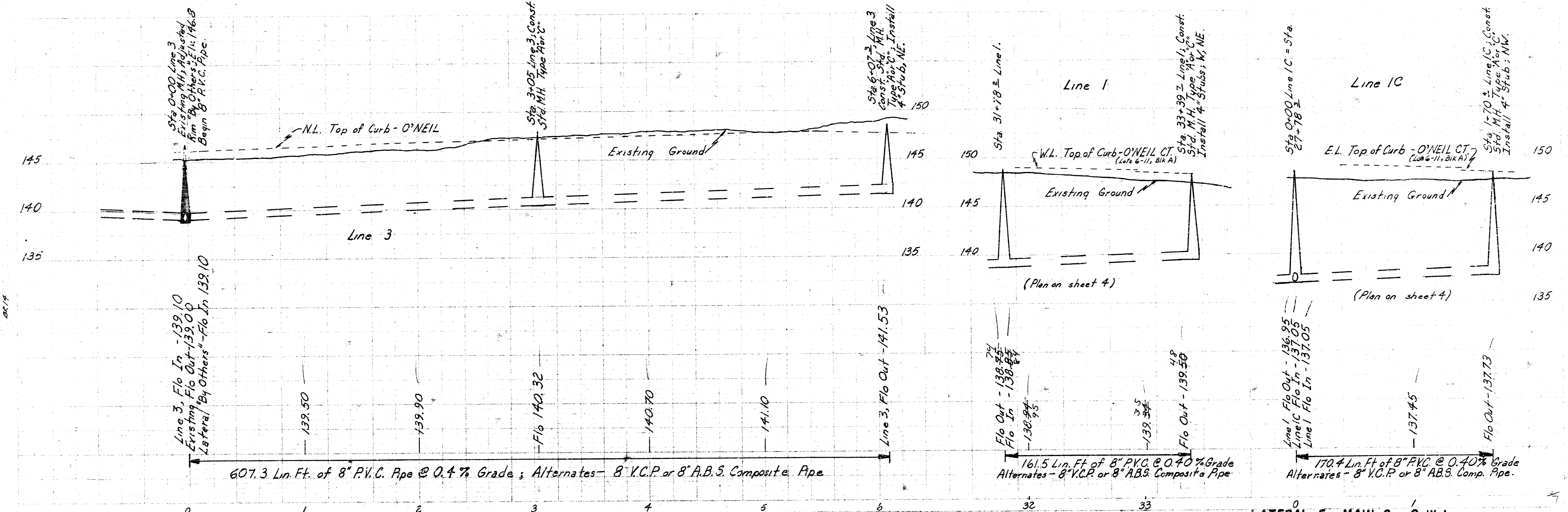
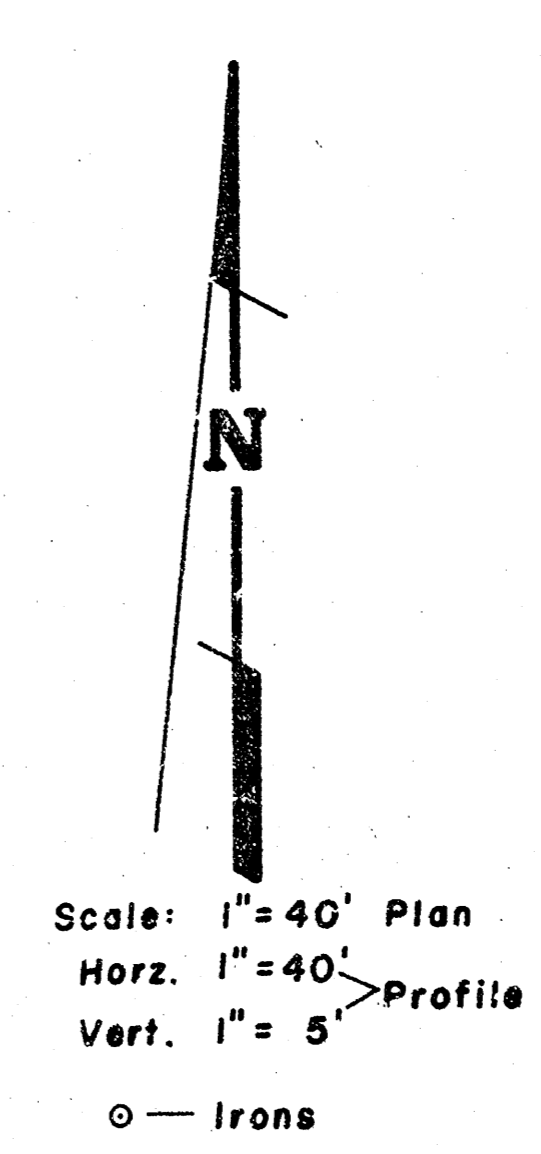
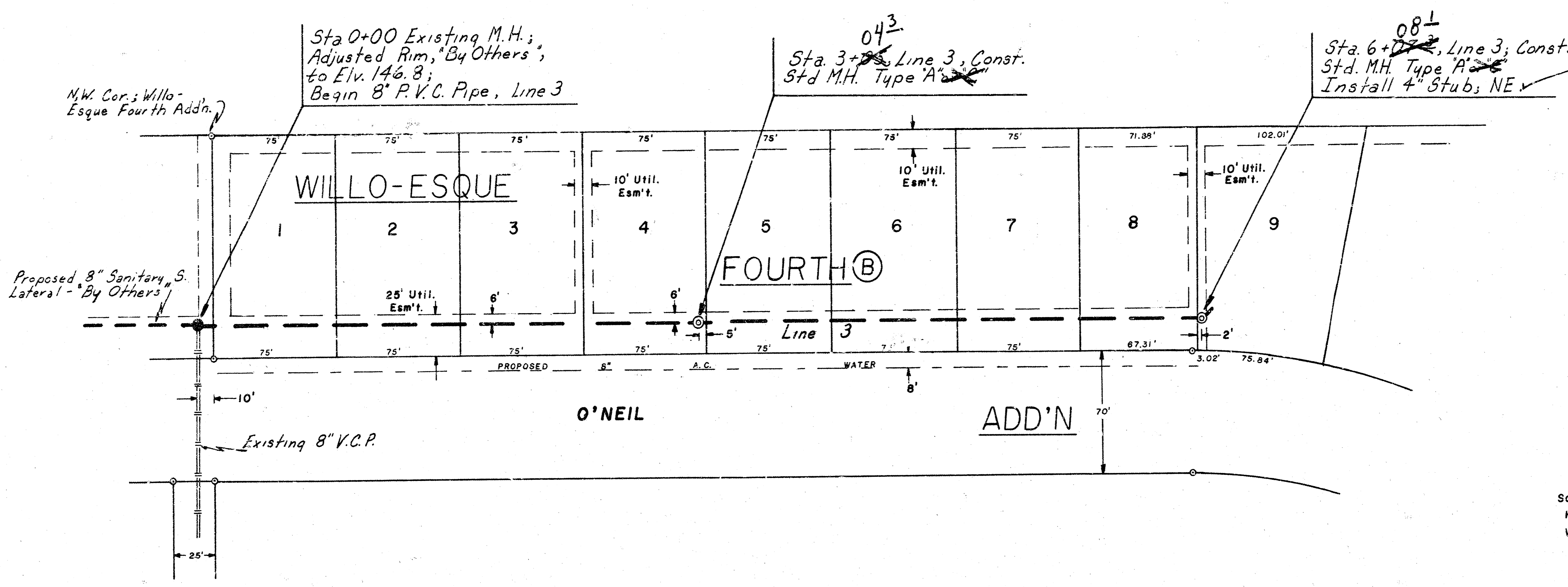
LATERAL 5, MAIN 6, S.W. 1.
 Line 1, IA, 1B
 Proj. No. 468-245-80891-000-000-001



Scale: 1" = 40' Plan
 Horiz. 1" = 40' Profile
 Vert. 1" = 5'
 - Irons

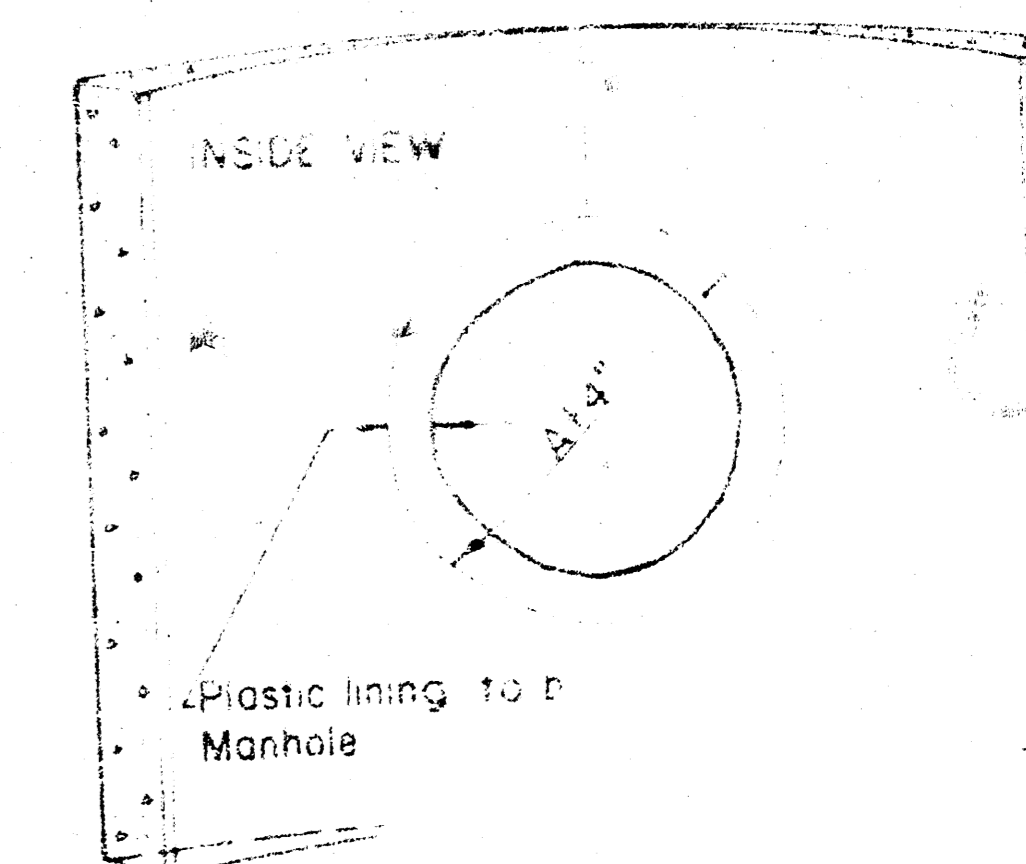
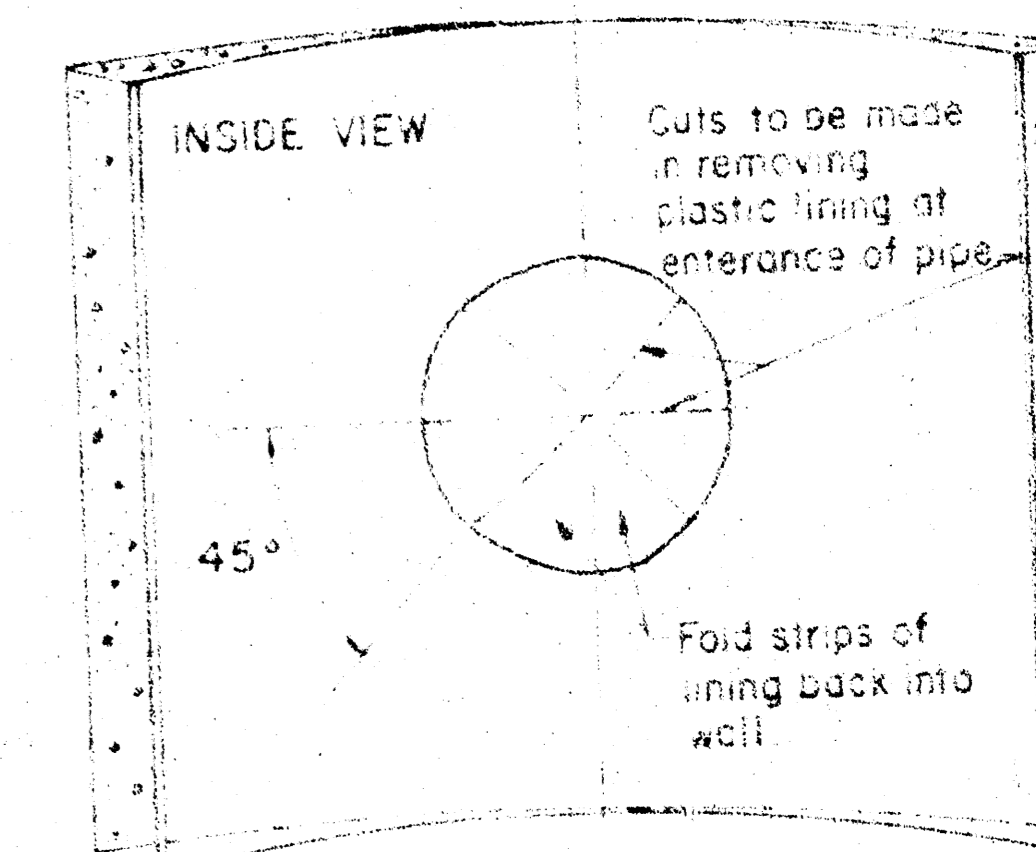
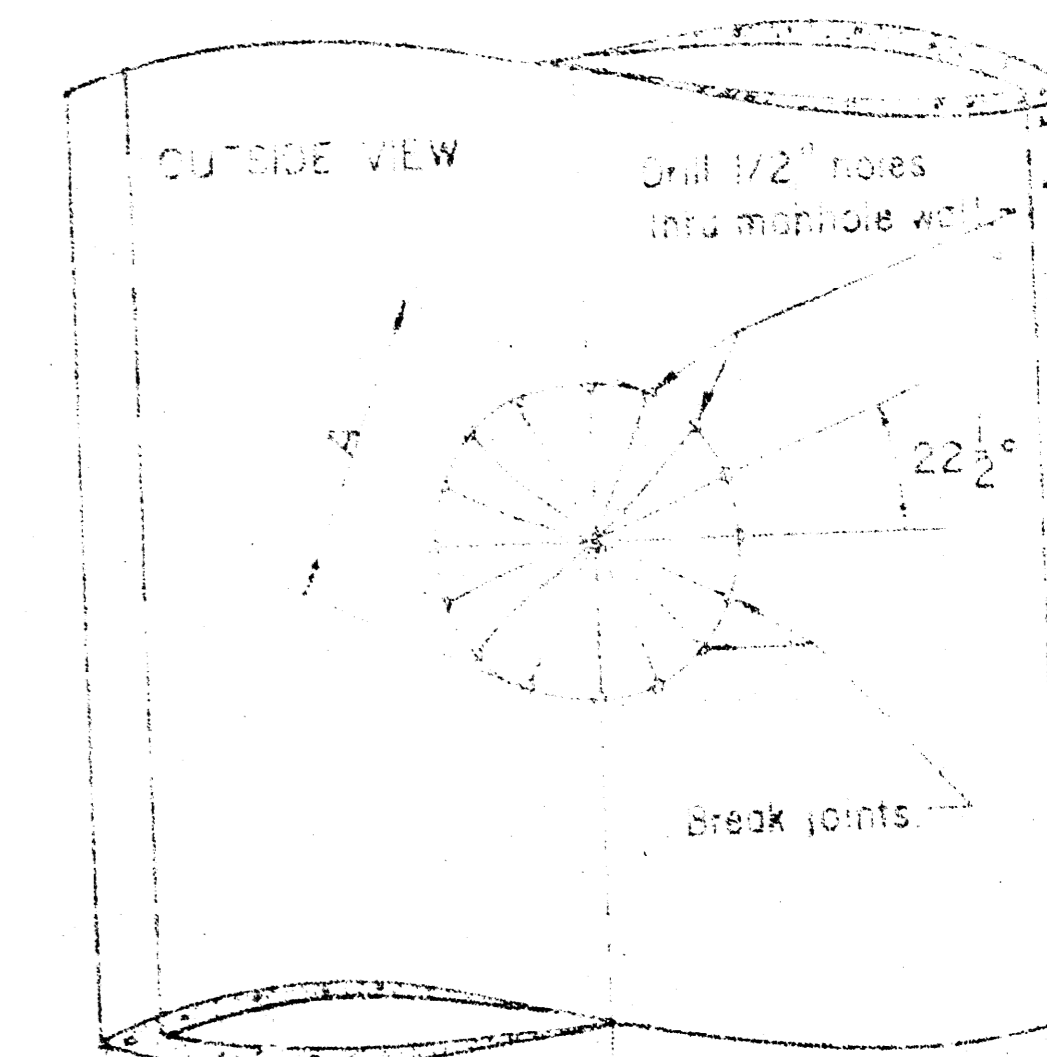
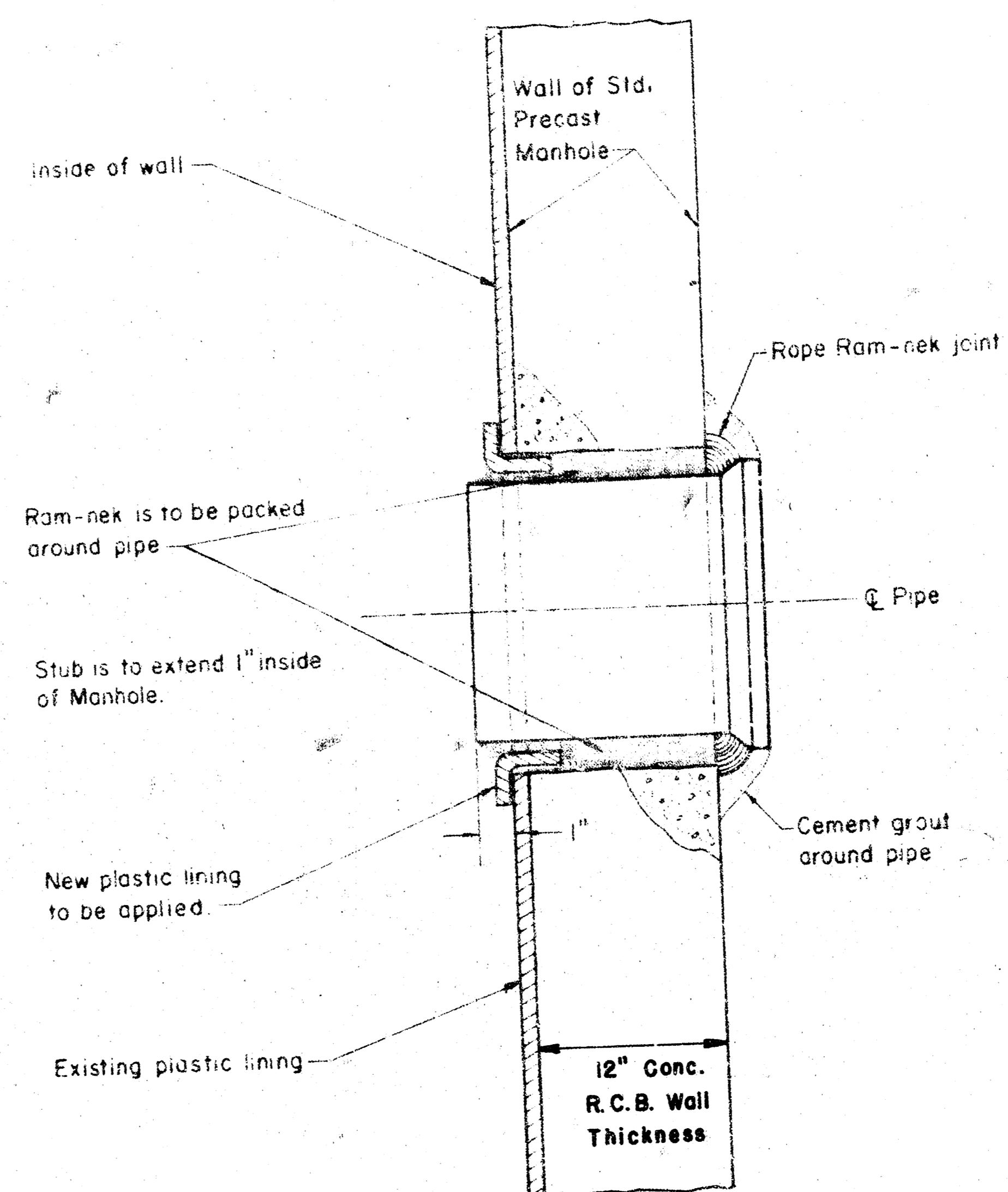


LATERAL 5, MAIN 6, S.W. 1
 Proj. No. 468-245-80891-000-000-001
 Line 1



LATERAL 5, MAIN 6, S.W.I.
 Proj. No. 468-245-80891-000-000-001
 Lines I, IC, & 3

NOTE: CONNECTION DETAILS SHOWN ON THIS SHEET ARE TO STRUCTURAL TEE MANHOLE. SAME REQUIREMENTS ARE TO APPLY TO CONNECTION TO EXISTING REINFORCED CONCRETE MANHOLE AT STATION 0 + 00 ON LINE #1.



FILMED FROM THE BEST AVAILABLE COPY