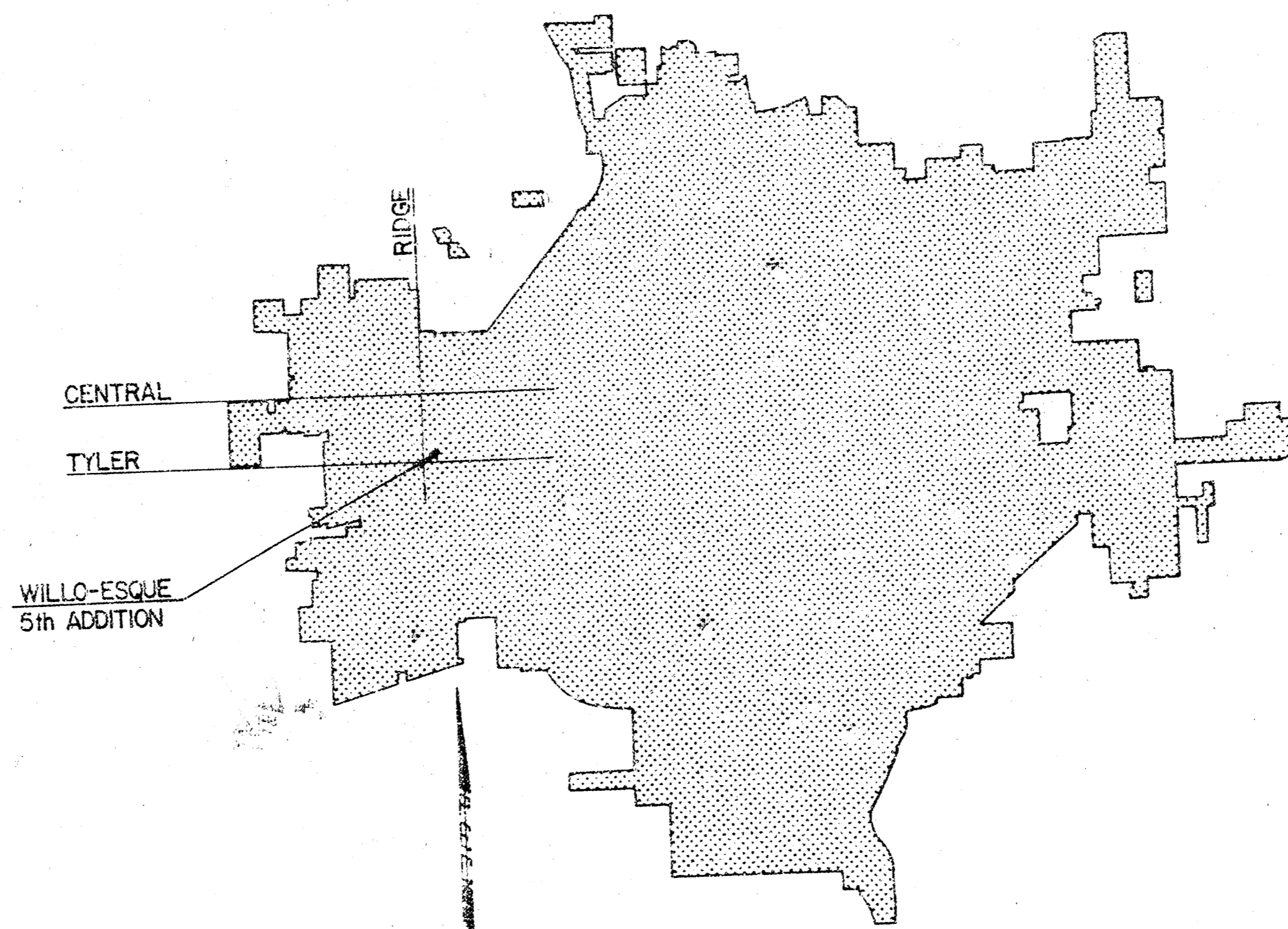


CONSTRUCTION PLANS FOR
LATERAL 7, MAIN 6
OF THE
SOUTHWEST INTERCEPTOR SEWER

THE CITY OF WICHITA,
SEDGWICK COUNTY, KANSAS

INDEX OF SHEETS
SHEET NO. 1 TITLE SHEET
SHEET NO. 2 KEY MAP & FINAL PLAT
SHEET NO. 3&4 PLAN & PROFILES



LOCATION MAP

CITY OF WICHITA PROJECT NO. 468-76-245-81145-000-000-001

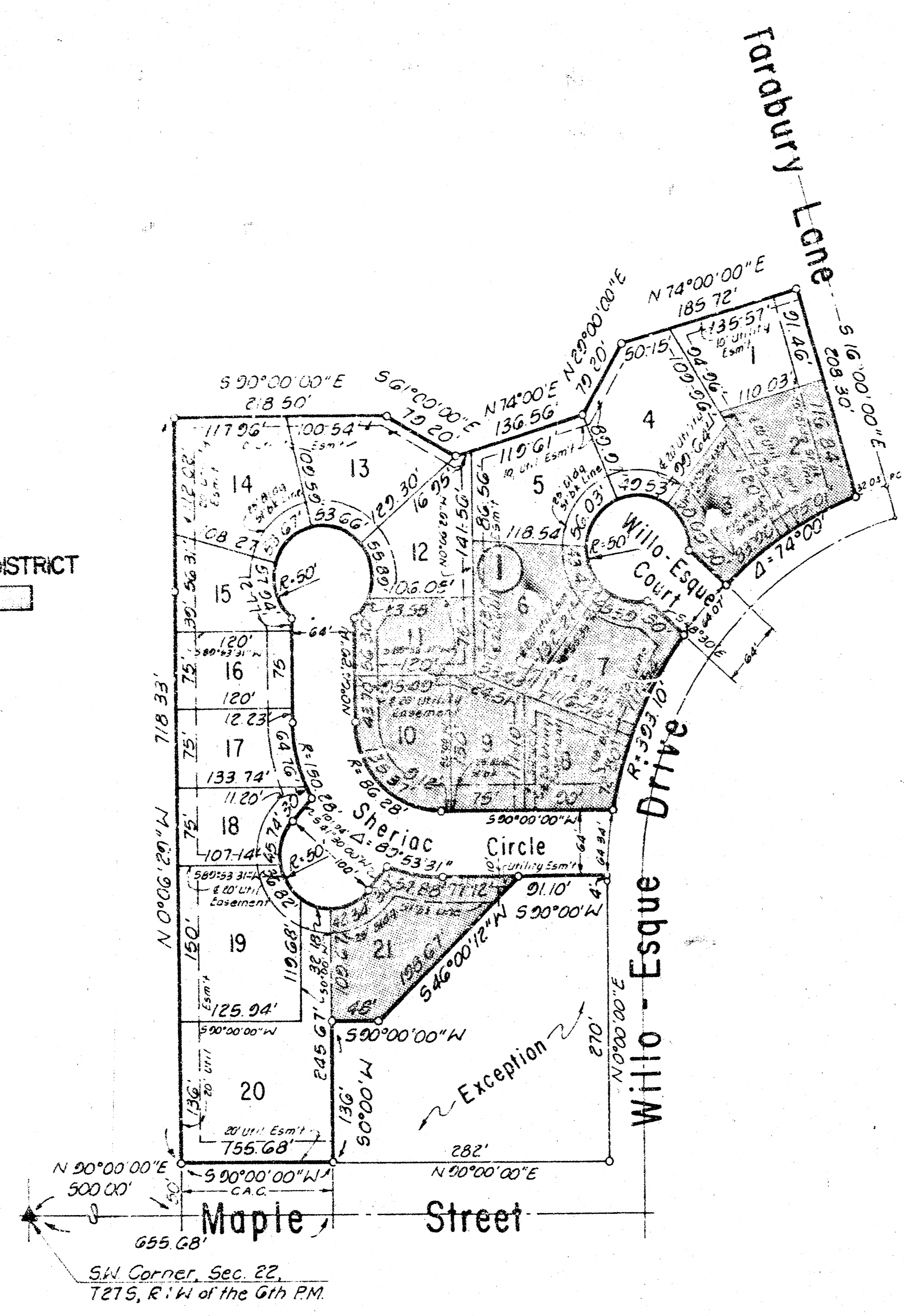
AUGUST 1981

PLANS PREPARED BY

PROFESSIONAL ENGINEERING CONSULTANTS, P.A.
ENGINEERS
WICHITA, KANSAS

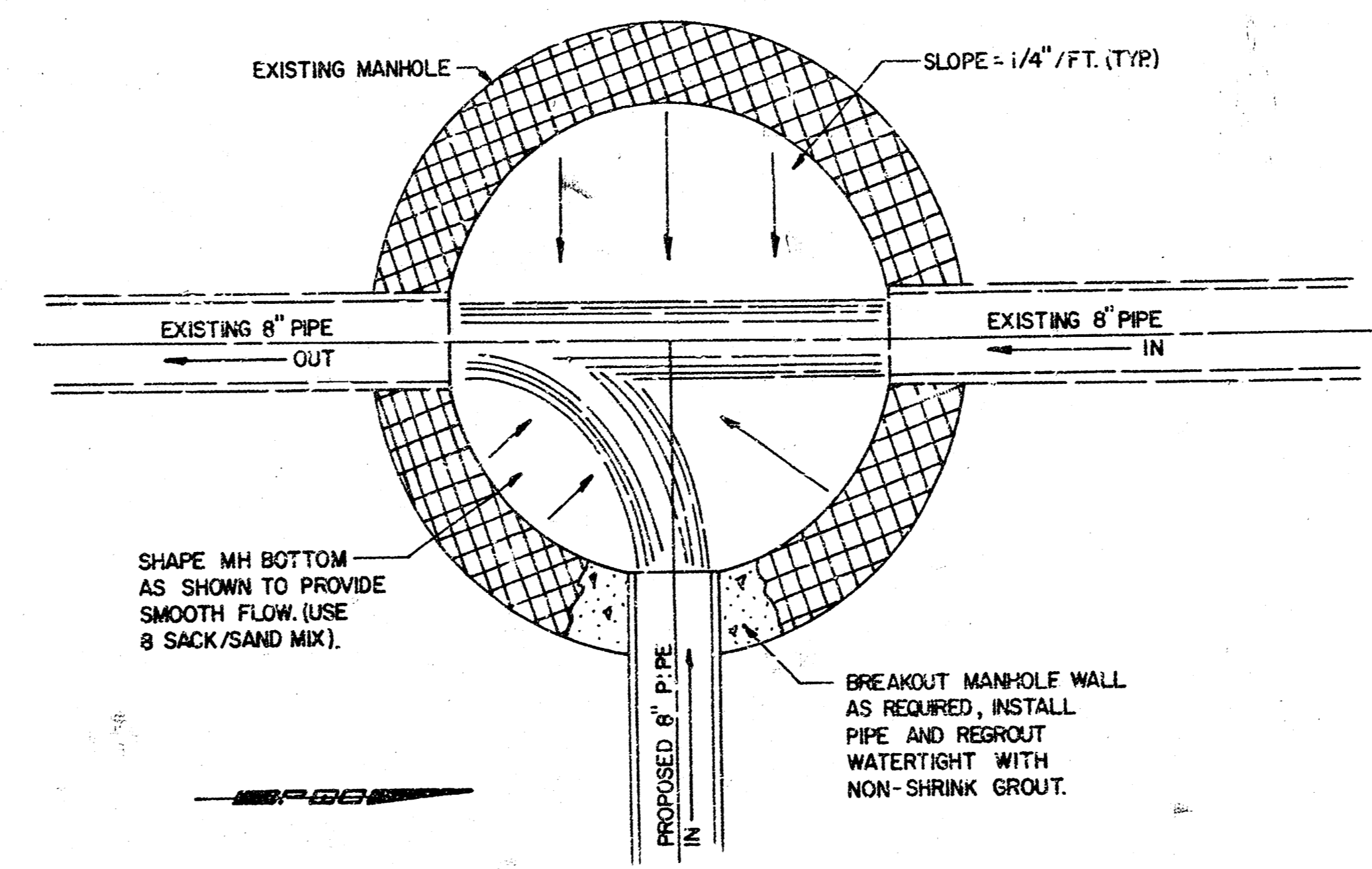
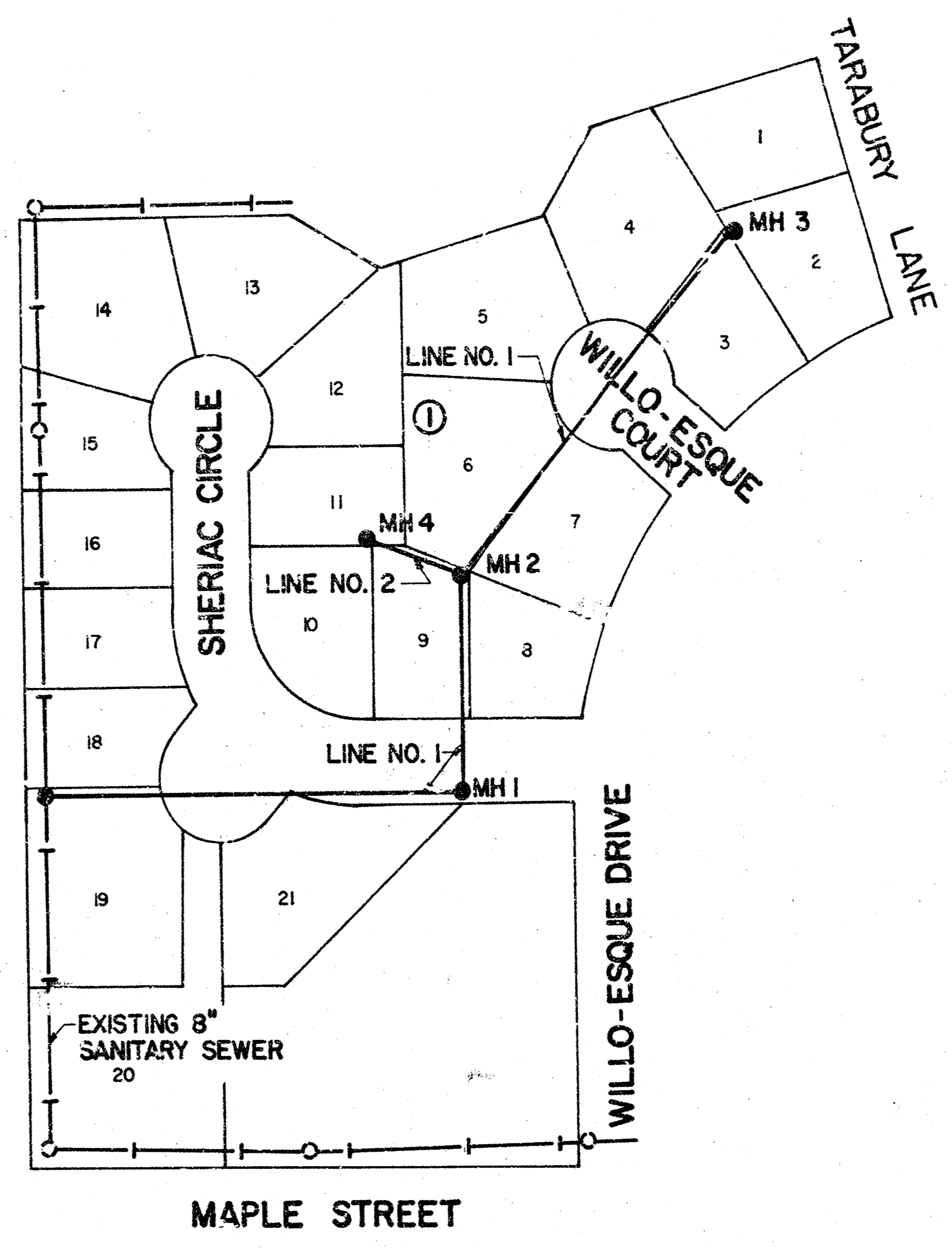


BENEFIT DISTRICT



WILLO-ESQUE 5th ADDITION
 T^C WICHITA, SEDGWICK COUNTY, KANSAS
 A REPLAT OF PART OF LOT 1, BLK A, WILLO-ESQUE 2nd ADDITION

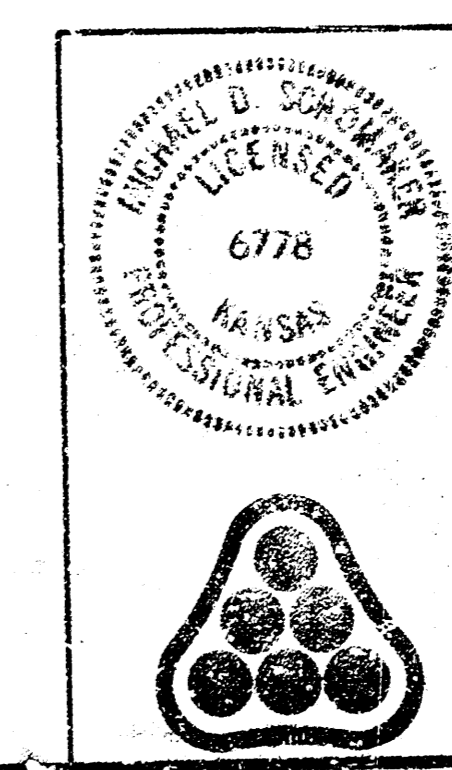
SEWER LINE SCHEDULE	
LINE NO.	SHEET NO.
1	384
2	4



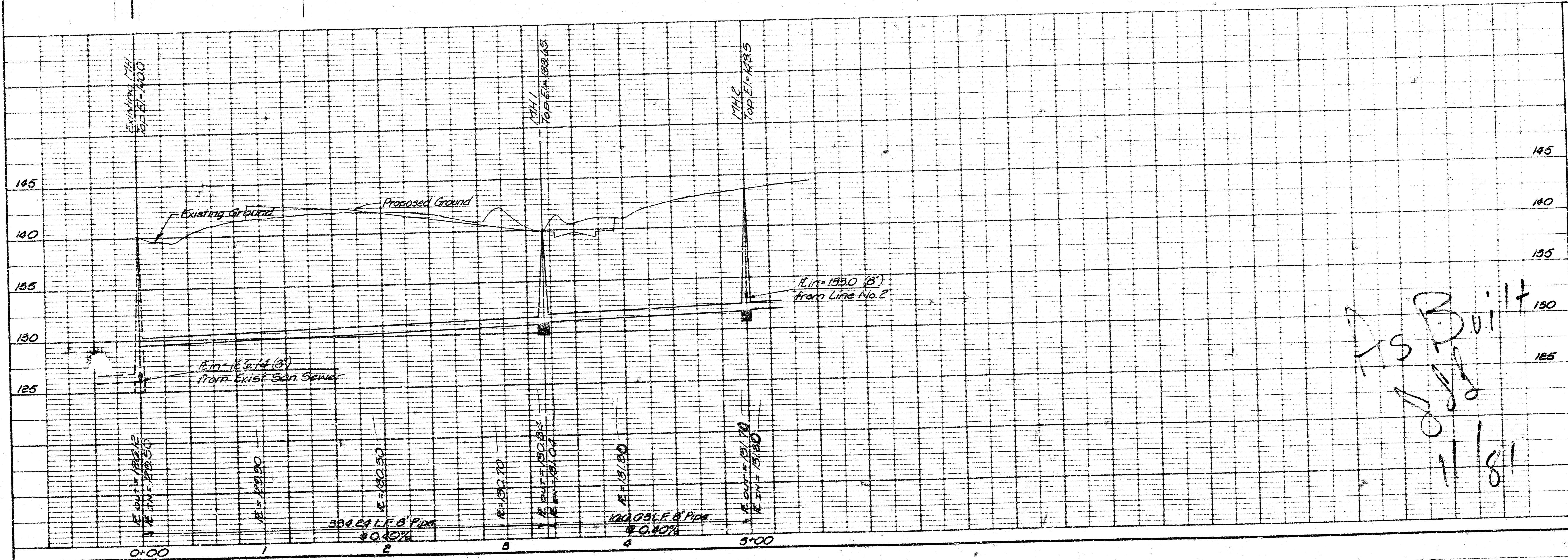
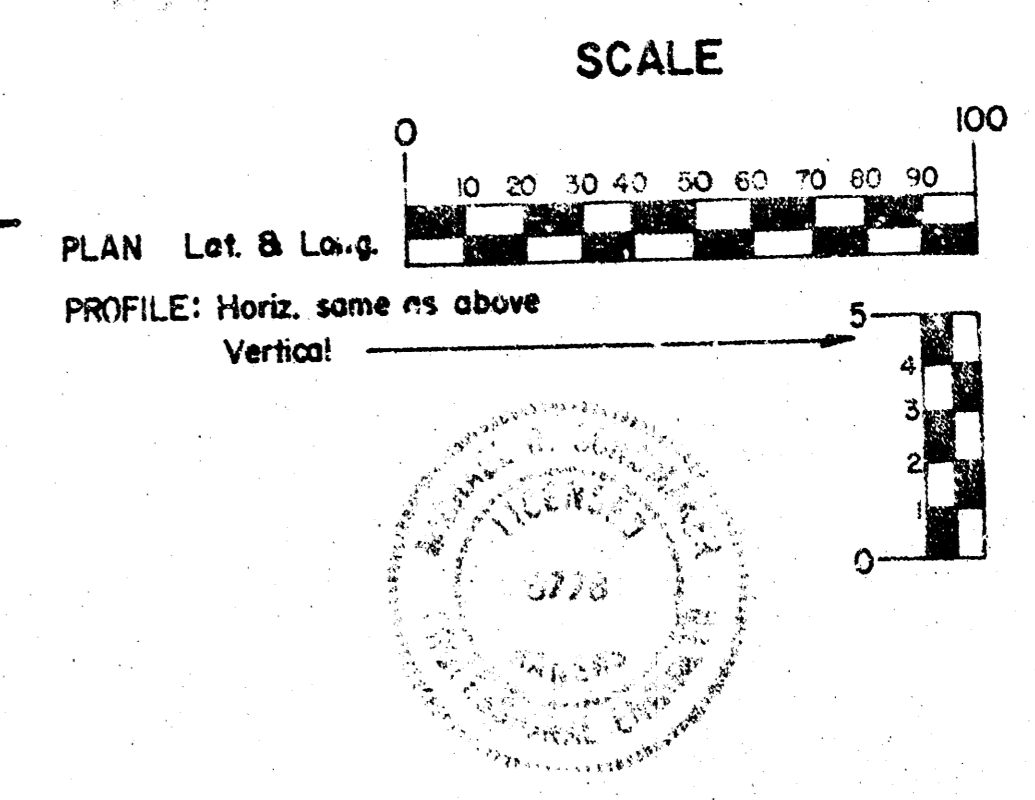
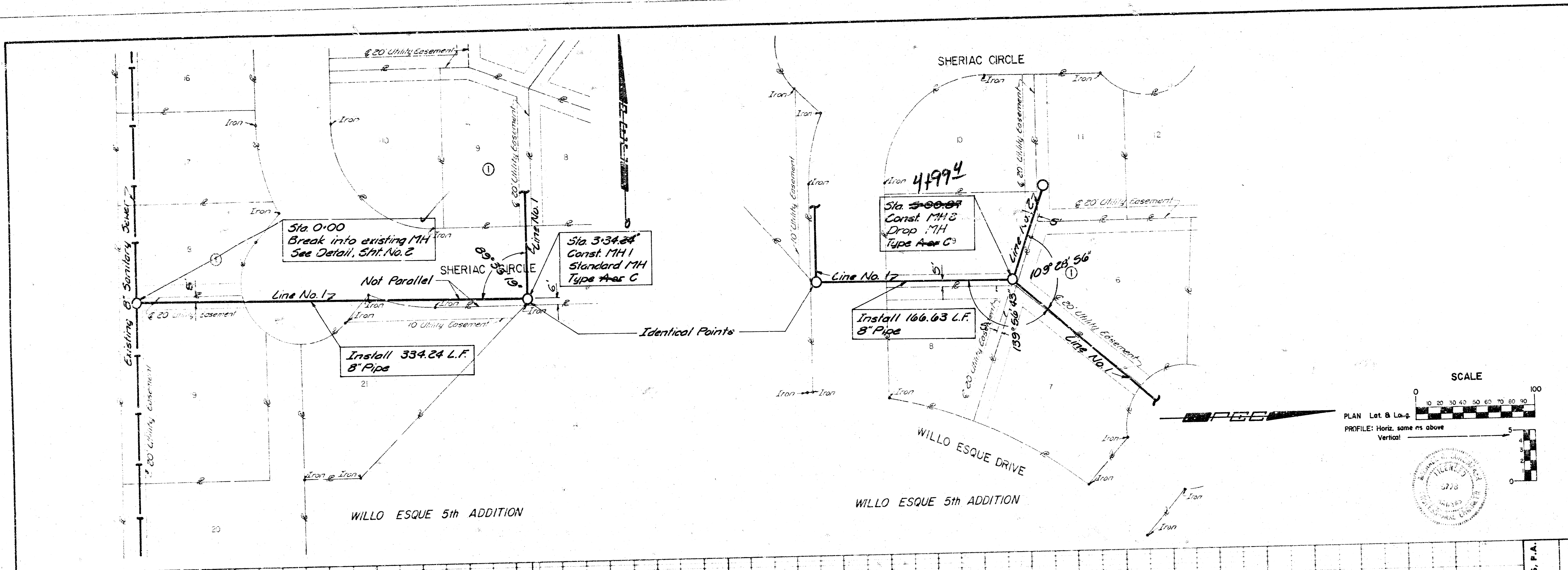
"BREAK IN" DETAIL
 BREAKING INTO THE EXISTING MH SHALL BE CONSIDERED SUBSIDIARY TO THE 8" PIPE INSTALLED

GENERAL NOTES

1. PRESERVATION OF PROPERTY IRONS. THE CONTRACTOR SHALL BE RESPONSIBLE FOR PRESERVING PROPERTY IRONS. THE CONTRACTOR SHALL BE REQUIRED TO RE-ESTABLISH ANY PROPERTY IRONS WHICH ARE DAMAGED OR DESTROYED BY HIS CONSTRUCTION OPERATIONS. SUCH IRONS SHALL BE RE-ESTABLISHED BY A LICENSED LAND SURVEYOR OR A LICENSED PROFESSIONAL ENGINEER IN ACCORDANCE WITH APPLICABLE STATE LAWS.
2. PRIOR TO BEGINNING CONSTRUCTION, THE CONTRACTOR SHALL VERIFY THE HORIZONTAL AND VERTICAL LOCATION OF THE EXISTING 8" SANITARY SEWER AT THE BEGINNING OF LINE NO. 1. IF ANY DISCREPANCIES ARE FOUND REGARDING FIELD LOCATIONS AND PLAIN LOCATIONS IN THESE AREAS, THE CONTRACTOR SHALL CONTACT THE ENGINEER FOR THE NECESSARY FIELD ADJUSTMENT CALCULATIONS PRIOR TO PROCEEDING.
3. ALL CONSTRUCTION AND MATERIALS TO COMPLY WITH CITY OF WICHITA SPECIFICATIONS AND STANDARDS.
4. SEWER LINES TO BE INSPECTED BY THE DEPARTMENT OF PUBLIC WORKS ENGINEERING DIVISION.
5. AT LEAST 48 HOURS PRIOR TO BEGINNING EXCAVATION (EXCLUDING WEEKENDS AND HOLIDAYS), THE CONTRACTOR SHALL CONTACT THE UTILITY LOCATION SERVICE "SAN-DIG-IT" AT (316)267-2989 TO REQUEST THE FOLLOWING UTILITY COMPANIES TO LOCATE ANY EXISTING LINES WITHIN THE PROJECT AREA: GAS SERVICE COMPANY, K.G.B.E., SOUTHWESTERN BELL TELEPHONE COMPANY, AND THE WICHITA WATER DEPARTMENT.
6. EXCESS EXCAVATED MATERIAL AND OTHER DEBRIS SHALL BE WASTED AS DIRECTED BY THE ENGINEER.
7. THE CONTRACTOR SHALL BE RESPONSIBLE FOR MAINTAINING CONTINUOUS FLOW OF SEWAGE THROUGH THE EXISTING SEWERS DURING CONSTRUCTION. THE CONTRACTOR'S PROPOSED METHOD FOR MAINTAINING FLOW OF SEWAGE DURING CONSTRUCTION WILL NOT BE PAID FOR DIRECTLY BUT SHALL BE CONSIDERED SUBSIDIARY TO THE OTHER ITEMS OF WORK.
8. ALL ELEVATIONS SHOWN ARE CITY OF WICHITA DATUM. (USGS-1187.4+CITY DATUM)
9. FIELD ENGINEER SHALL SET TOPS OF MANHOLES TO MATCH PROPOSED ELEVATIONS AS DETERMINED BY THE DEVELOPER. RISERS AND ADDITIONAL STUBS SHALL BE INSTALLED ON THIS PROJECT TO SERVE INDIVIDUAL LOTS WHEN ORDERED BY THE FIELD ENGINEER. RISER CONSTRUCTION SHALL CONFORM TO THE REQUIREMENTS AS SHOWN ON STANDARD RISER DETAIL SHEET. LOCATIONS OF THE ENDS OF THE RISERS SHALL BE MARKED BY FASTENING GREEN PLASTIC COLORED TAPE TO THE END OF THE RISER AND BROUGHT TO THE GROUND SURFACE AS THE EXCAVATION IS COMPLETED. ALL RISERS SHALL BE CONSTRUCTED USING S.D.R. 23.5 A.B.S. OR P.V.C. PIPE. ELEVATIONS OF STUBS AND TOPS OF RISERS SHALL BE SUCH THAT WILL FACILITATE CONNECTION OF BASEMENT DRAINS WHEN THESE LOTS ARE DEVELOPED.
10. CONTRACTOR CAN USE EITHER 8" CLAY PIPE, 8" A.B.S. COMP. PIPE, OR 8" P.V.C. PIPE WHERE PLANS SPECIFY 8" PIPE EXCEPT THAT ONLY ONE OF THESE KINDS OF PIPES MAY BE USED IN THESE LOCATIONS.

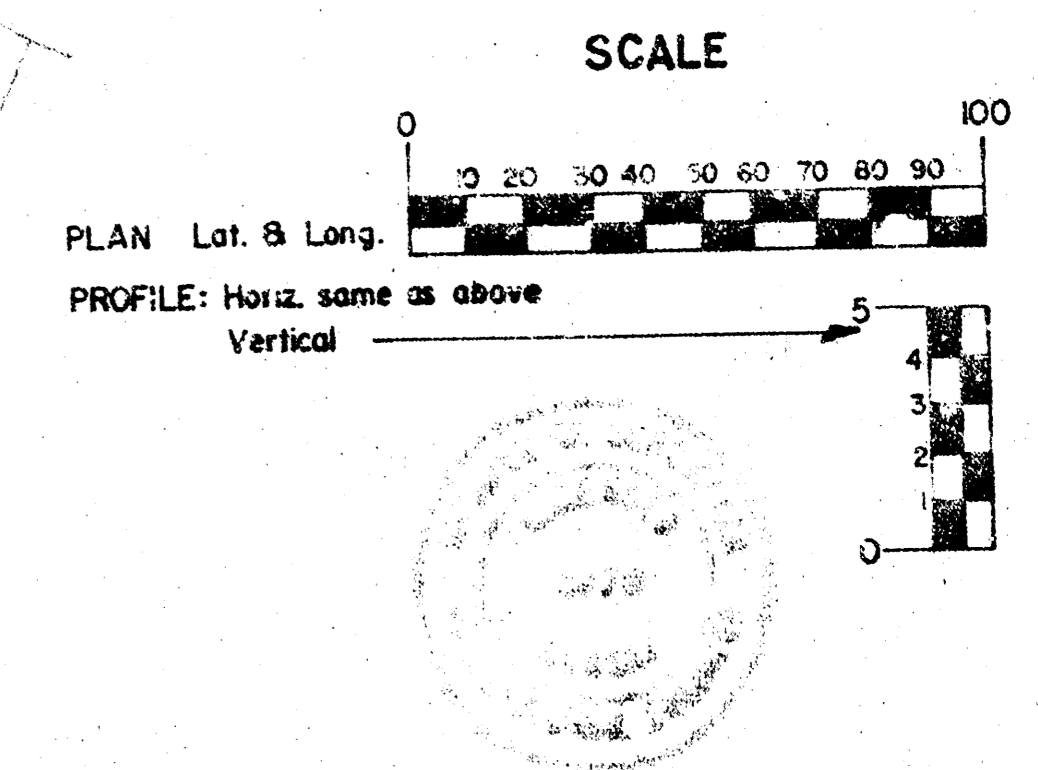
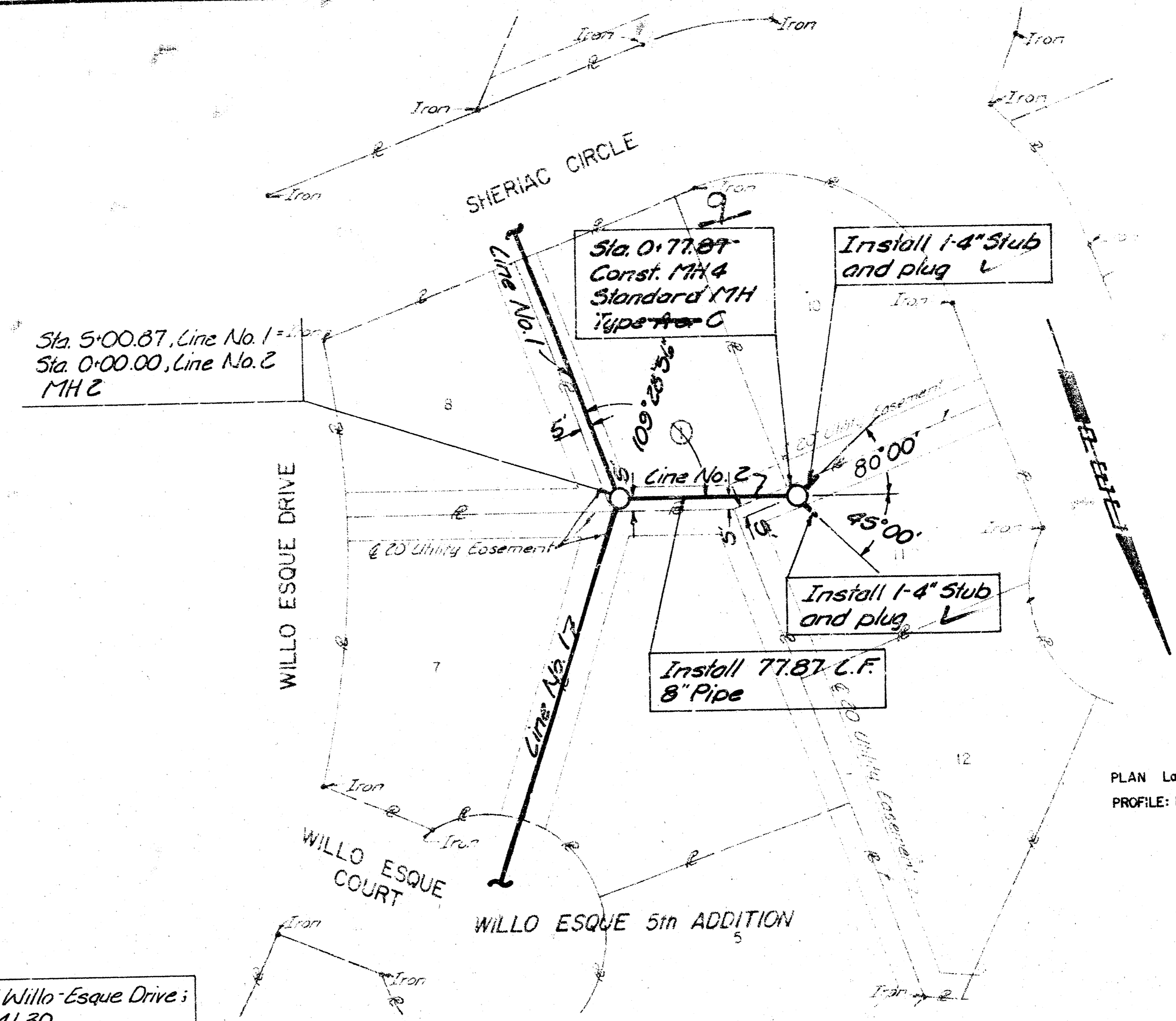
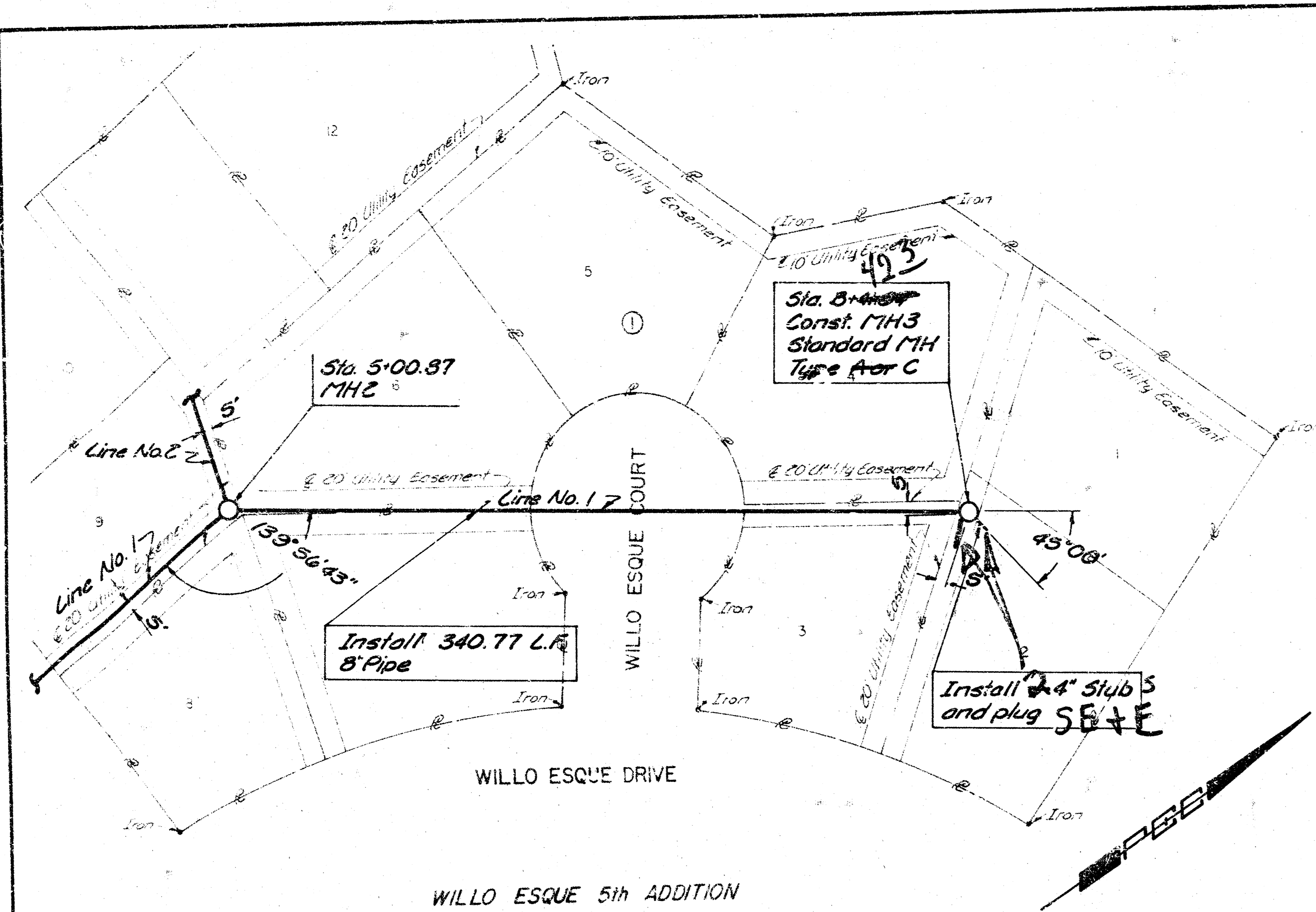


Revision		By	Date
CITY OF WICHITA, KANSAS LATERAL 7, MAIN 6 SOUTHWEST INTERCEPTOR SEWER			
KEY MAP AND FINAL PLAT			
WILLO-ESQUE 5th ADDITION C.O.F.W. PROJECT NO. 488-76-245-81145-C00-000-C01			
PROFESSIONAL ENGINEERING CONSULTANTS, P.A.			
ENGINEERS WICHITA, KANSAS			
Designed by	MDS	Job No.	81189-1
Drawn by	G.D.T3	Date	

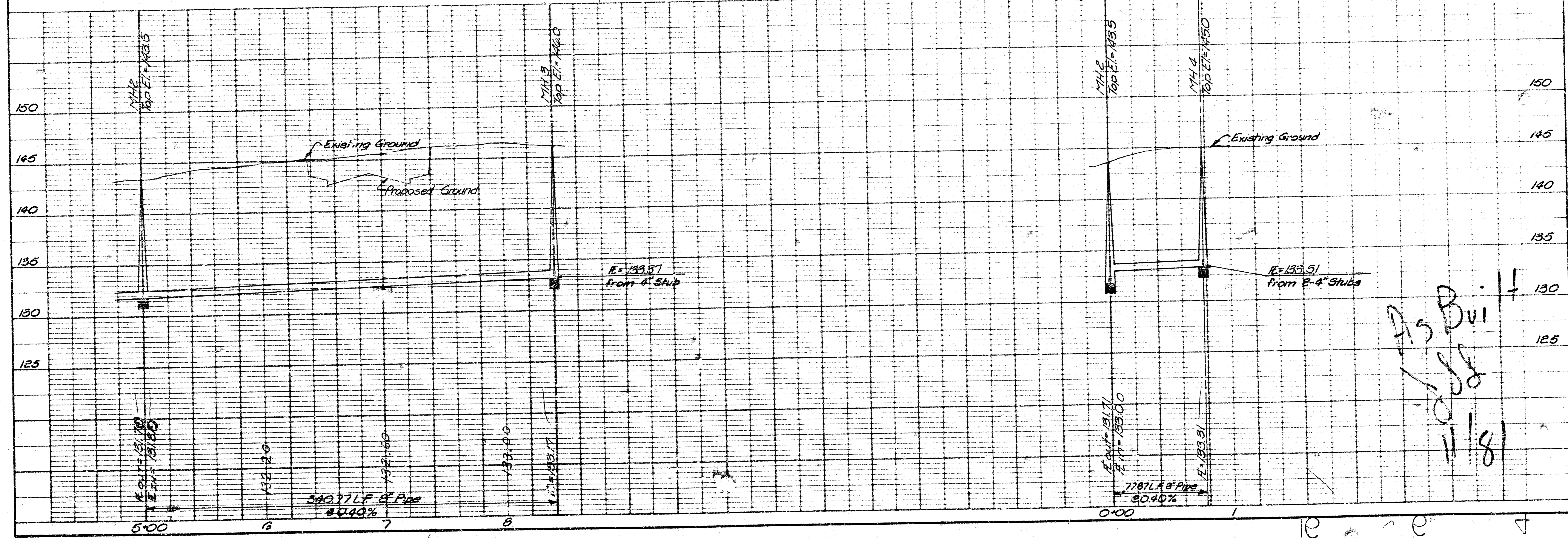


Handwritten signature and initials: J.S. D. 11/81

PROFESSIONAL ENGINEERING CONSULTANTS, P.A.
 ENGINEERS
 WICHITA, KANSAS
 Designated by: *MDS*
 Drawn by: *GD/DP*
 Date: _____
 CITY OF WICHITA, KANSAS
 LATERAL 7, MAIN 6
 SOUTHWEST INTERCEPTOR SEWER
 LINE NO. 1
 WILLO-ESQUE 5th ADDITION
 C.O.S.W. PROJECT NO. 58-156-24-8115-000-000-001
 Sht. 3



BM - Chiseled π on B/C ; W. Side of Willo-Esque Drive ;
67th N. Torabury Lane. Elev. 141.30



PROFESSIONAL ENGINEERING CONSULTANTS, P.A.
WICHITA, KANSAS
Job No. 8189-1
Designed by MDS
Drawn by G.D.D.P.
Date: _____
CITY OF WICHITA, KANSAS
SOUTHWEST INTERCEPTOR SEWER
LATERAL 7, MAIN 6
LINE NOS. 1 & 2
WILLO-ESQUE 5th ADDITION
C.O.P.W. PROJECT NO. 468-75-2-25-81145-000-000-001

Handwritten: 11/81
11/81