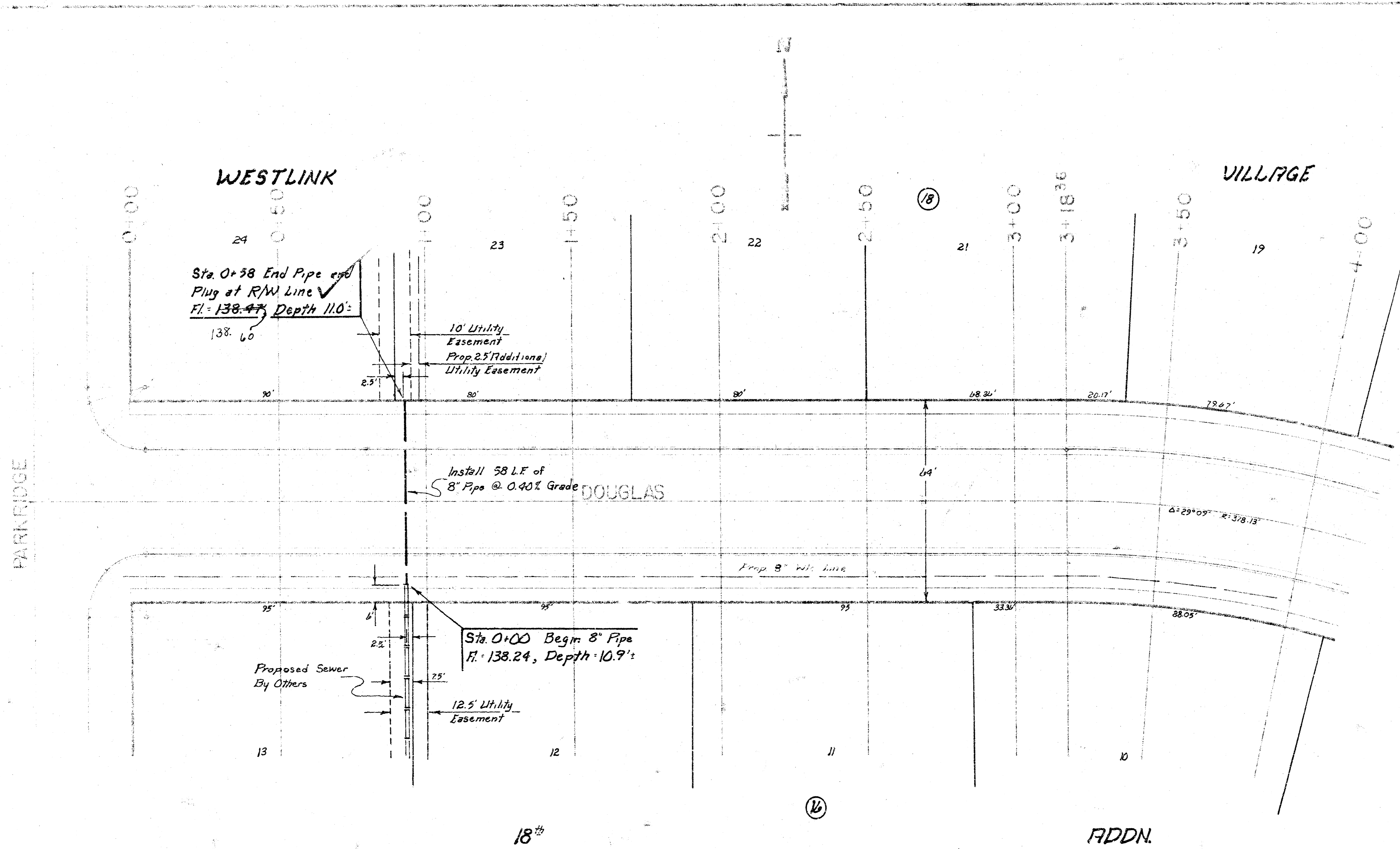


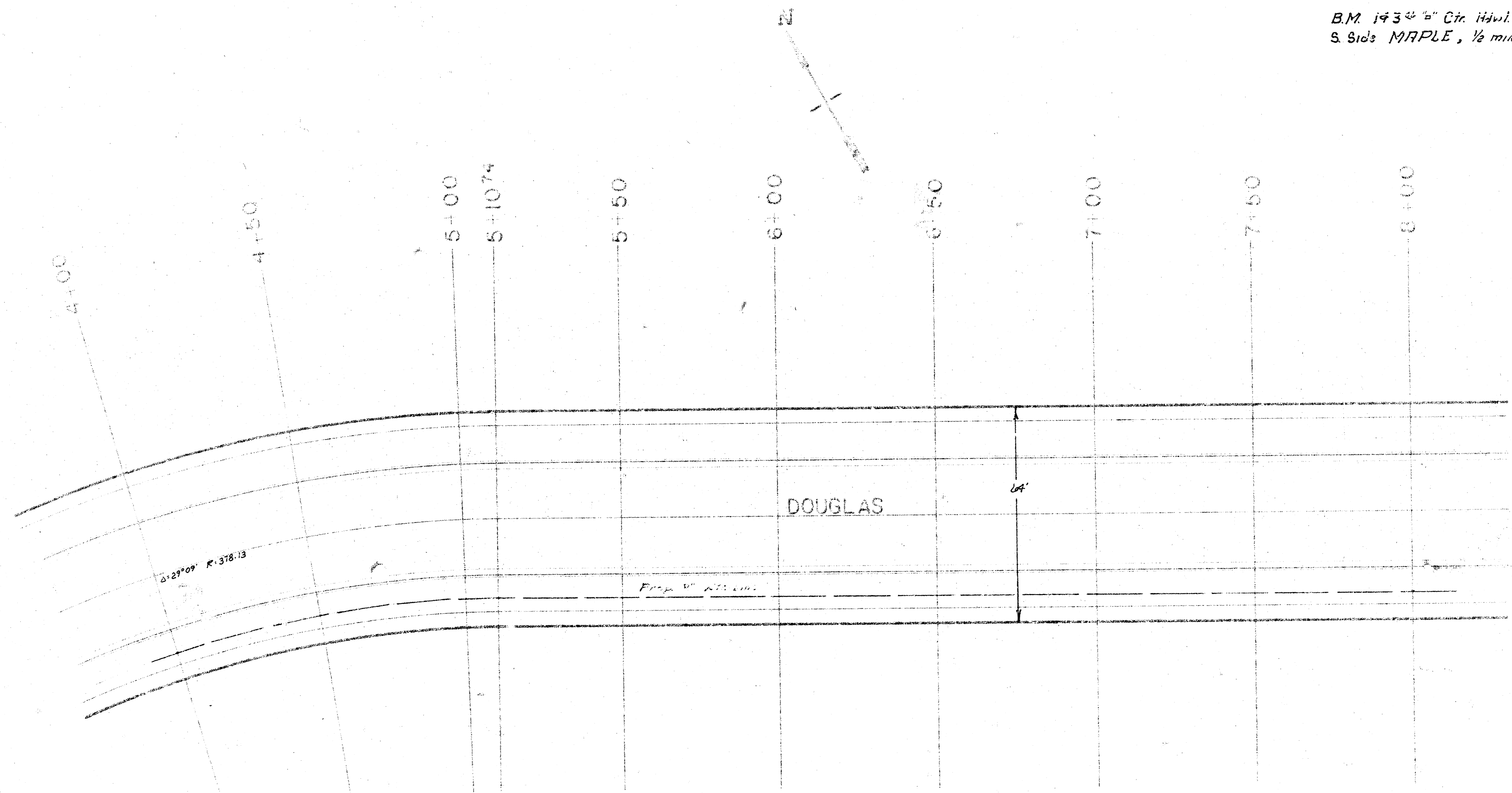
BM 143⁰⁸ 4" Ctr. Hdwl. S. End R.C.P.
S. Side MAPLE, 1/2 mile W. of M112 Rd.



D. S. Burt
7/8/81
J. J. J.

Phase I
Lat. 1, Main 9, Southwest Interceptor
Proj. No. 468 74 245 80639 000 000 001

B.M. 1434 "6" Ctr. Hdwl. S. End R.C.P.
S. Side MAPLE, 1/2 mile W of M712 Rd.



Phase I
Lot 1, Main 9, Southwest Interceptor
Proj. No. 46876-295-80637-000-000-001

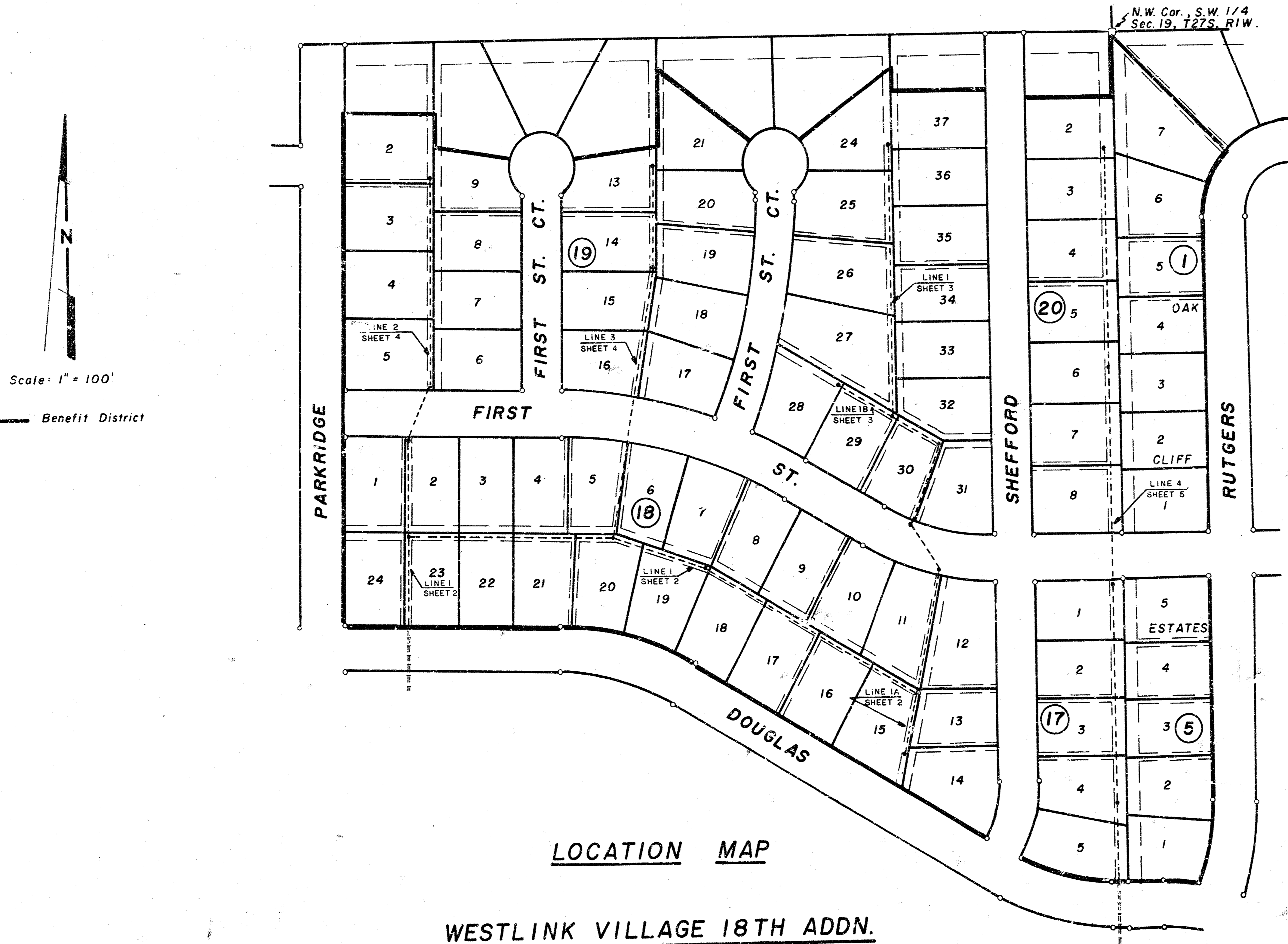
LATERAL 1, MAIN 9, SOUTHWEST INTERCEPTOR
PHASE II

CITY OF WICHITA, KANSAS

R. W. BRUGGEMAN: DIRECTOR OF ENGINEERING/CITY ENGINEER

DATE:

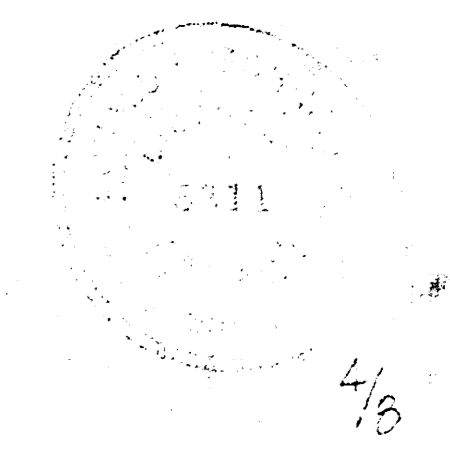
PROJ. NO. 468-76-245-80639-000-000-001

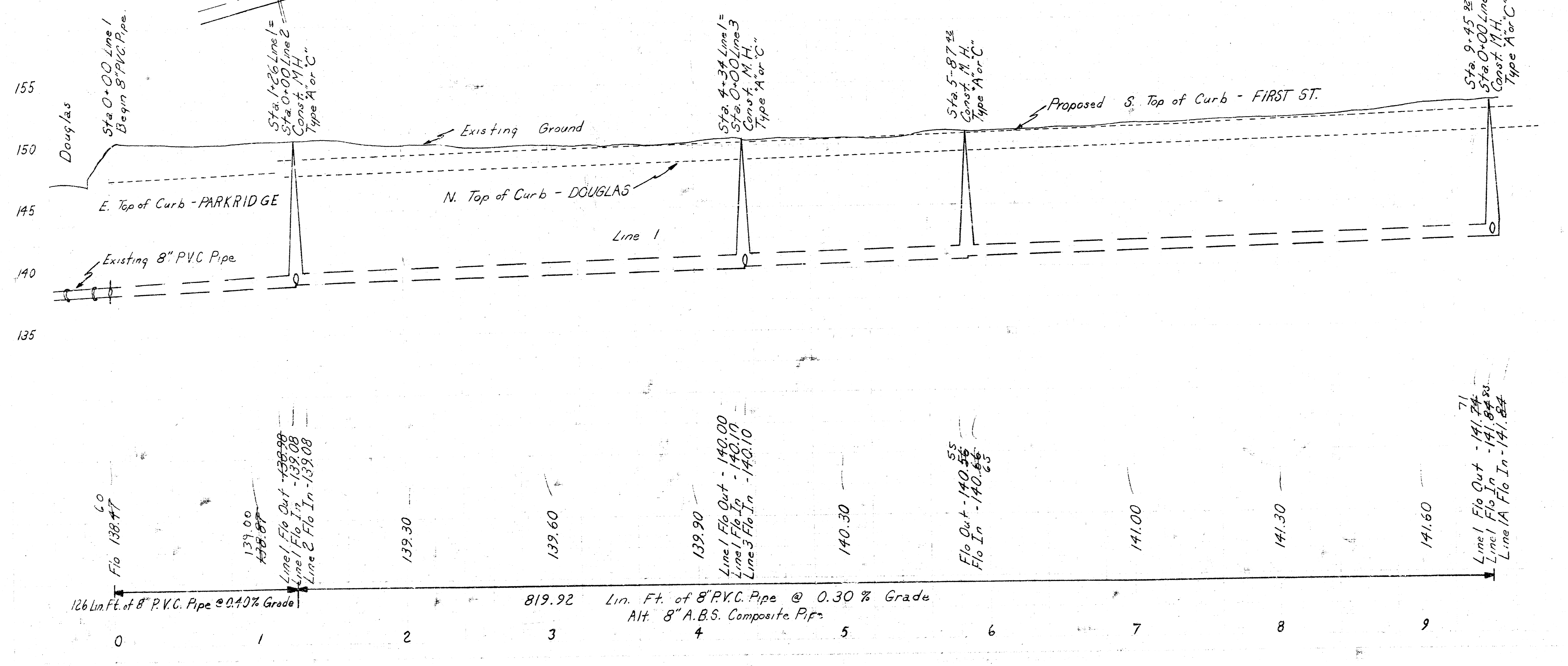
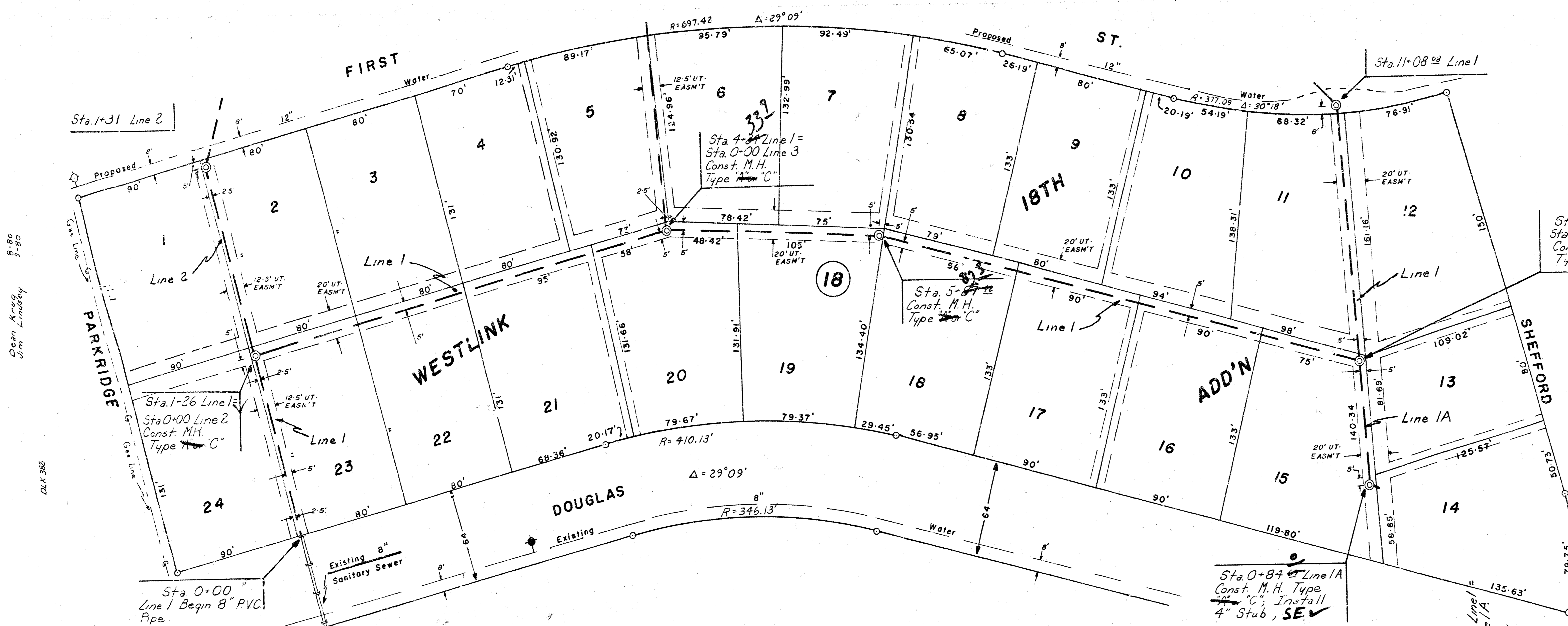


LOCATION MAP

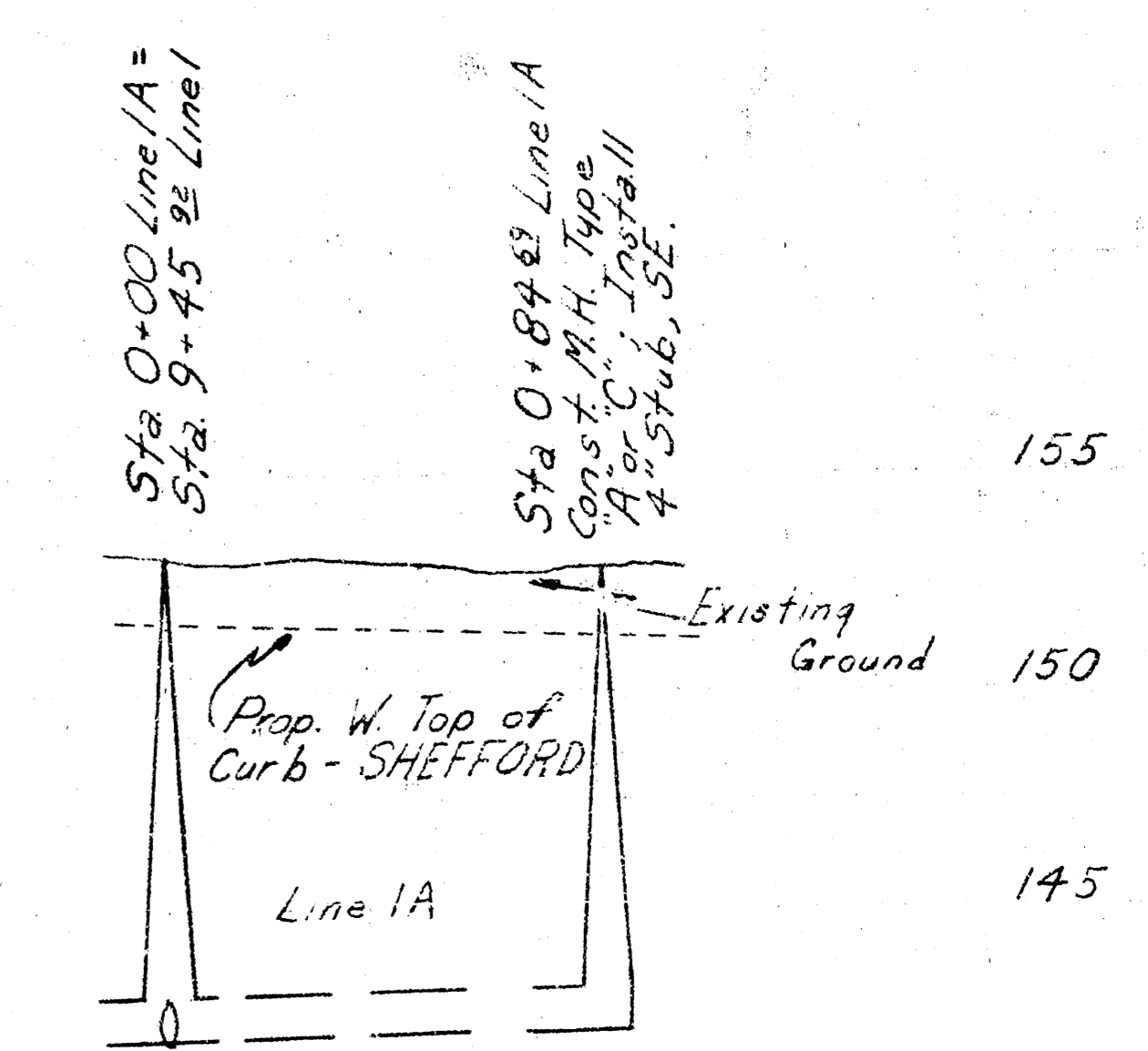
WESTLINK VILLAGE 18TH ADDN.

*AS BUILT
7/8/81
JFB*





Scale: 1" = 40' Plan
 Horiz. 1" = 40' Profile
 Vert. 1" = 5'
 Ⓞ - Iron -
 B.M: 147.43 "d" Top of E. Curb - Parkridge
 8' S. of S-L. Douglas

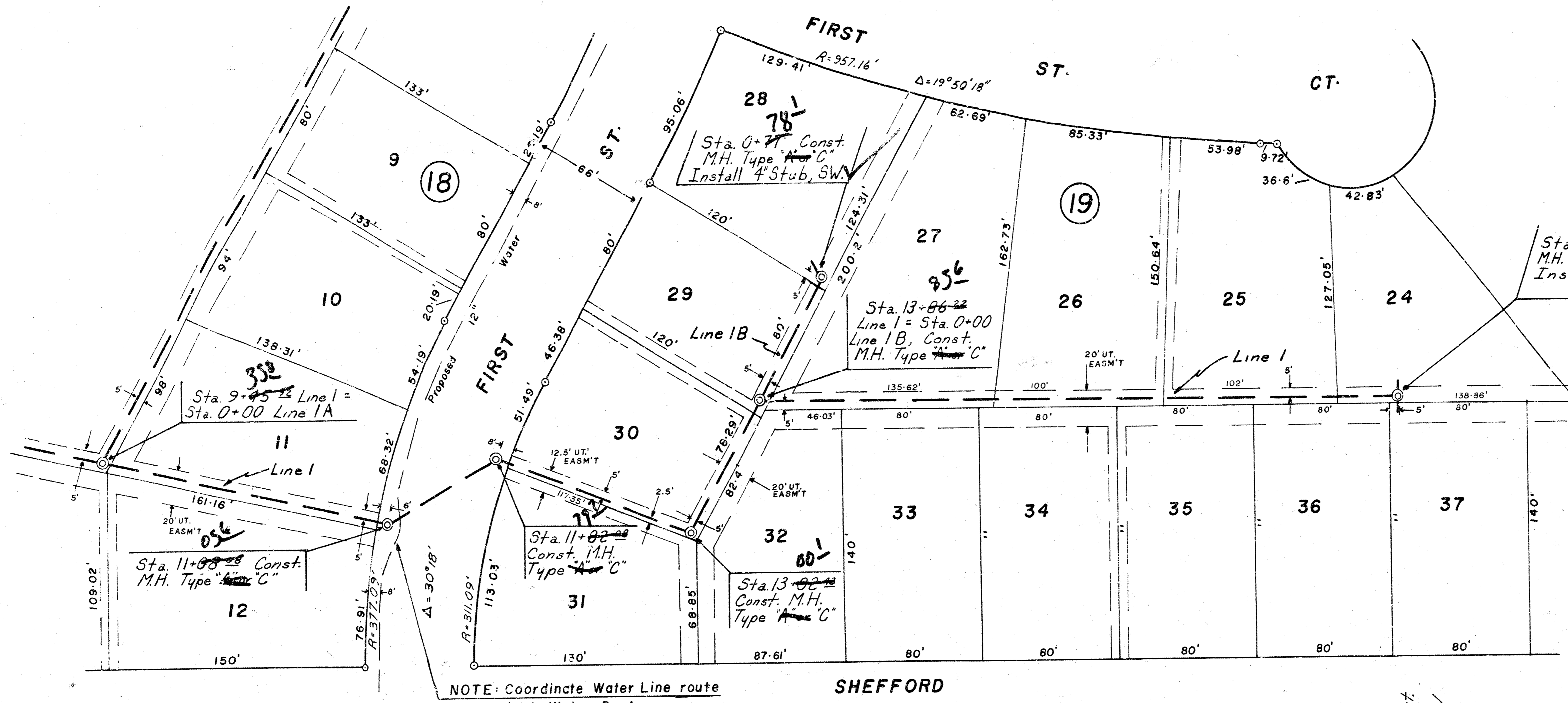


As Built
 7/91
 JSS

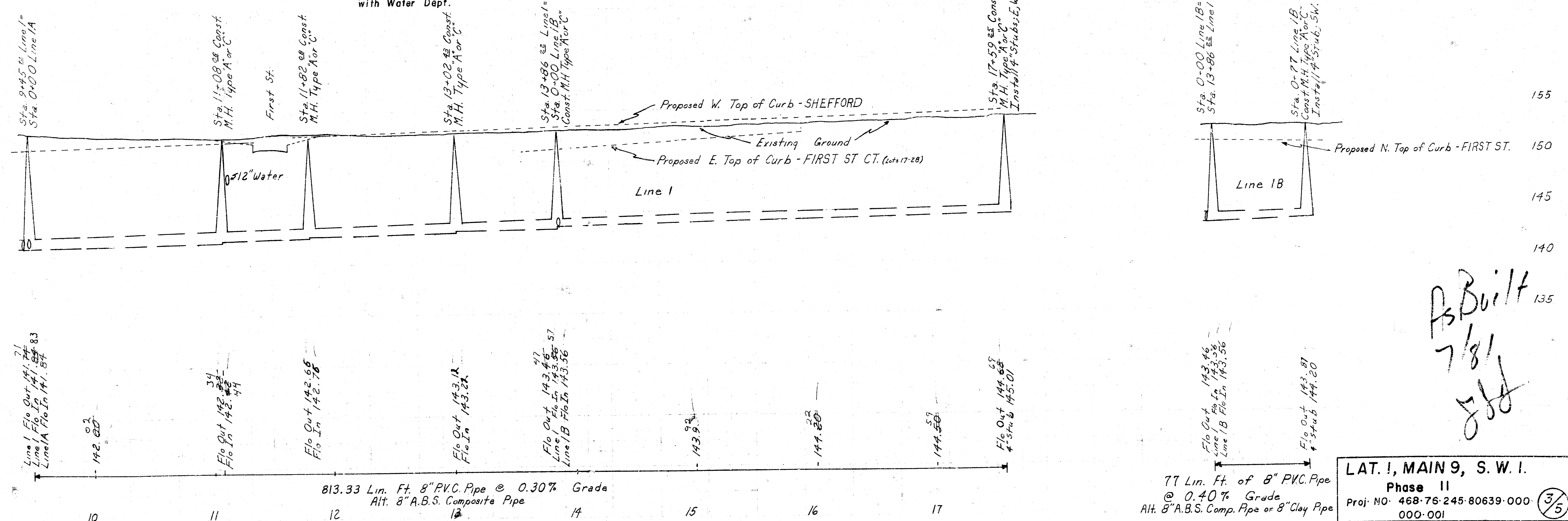
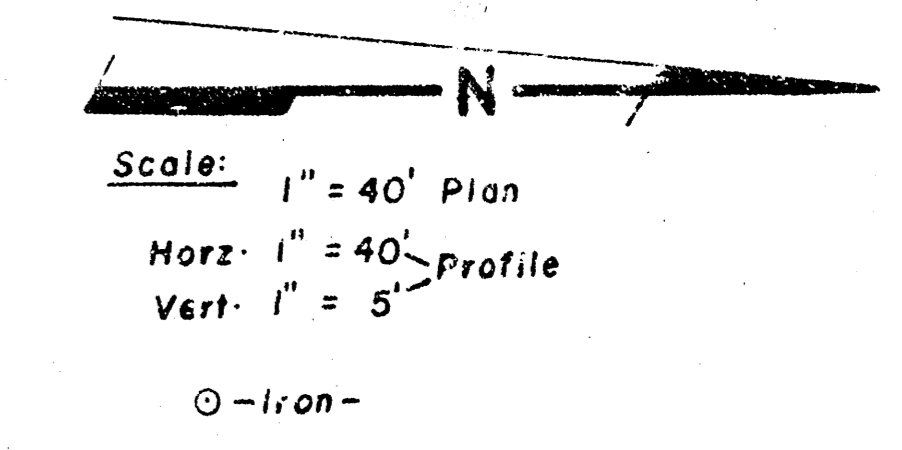
84.69 Lin. Ft. 8" PVC. Pipe @ 0.40% Grade
 Alt. - 8" A.B.S. Comp. Pipe or 8" Clay Pipe

LAT. I, MAIN 9, S.W. I.
 Phase II
 Proj. NO. 468-76-245-80639-000-000-001
 Line I
 Line IA

WESTLINK 18TH ADD'N



574
Sta. 17+59 Const. M.H. Type 'C' Install 4" Stubs, E, W



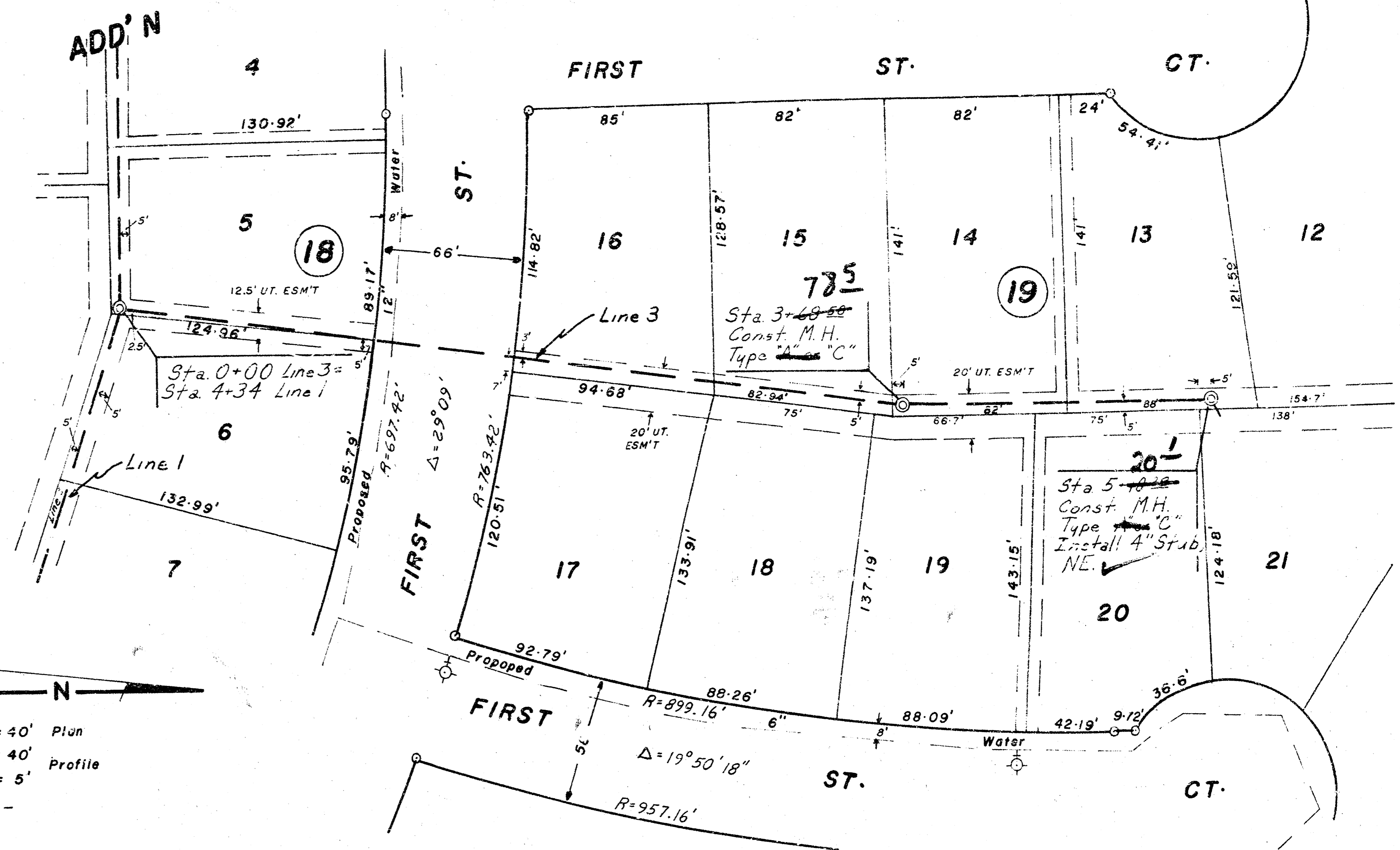
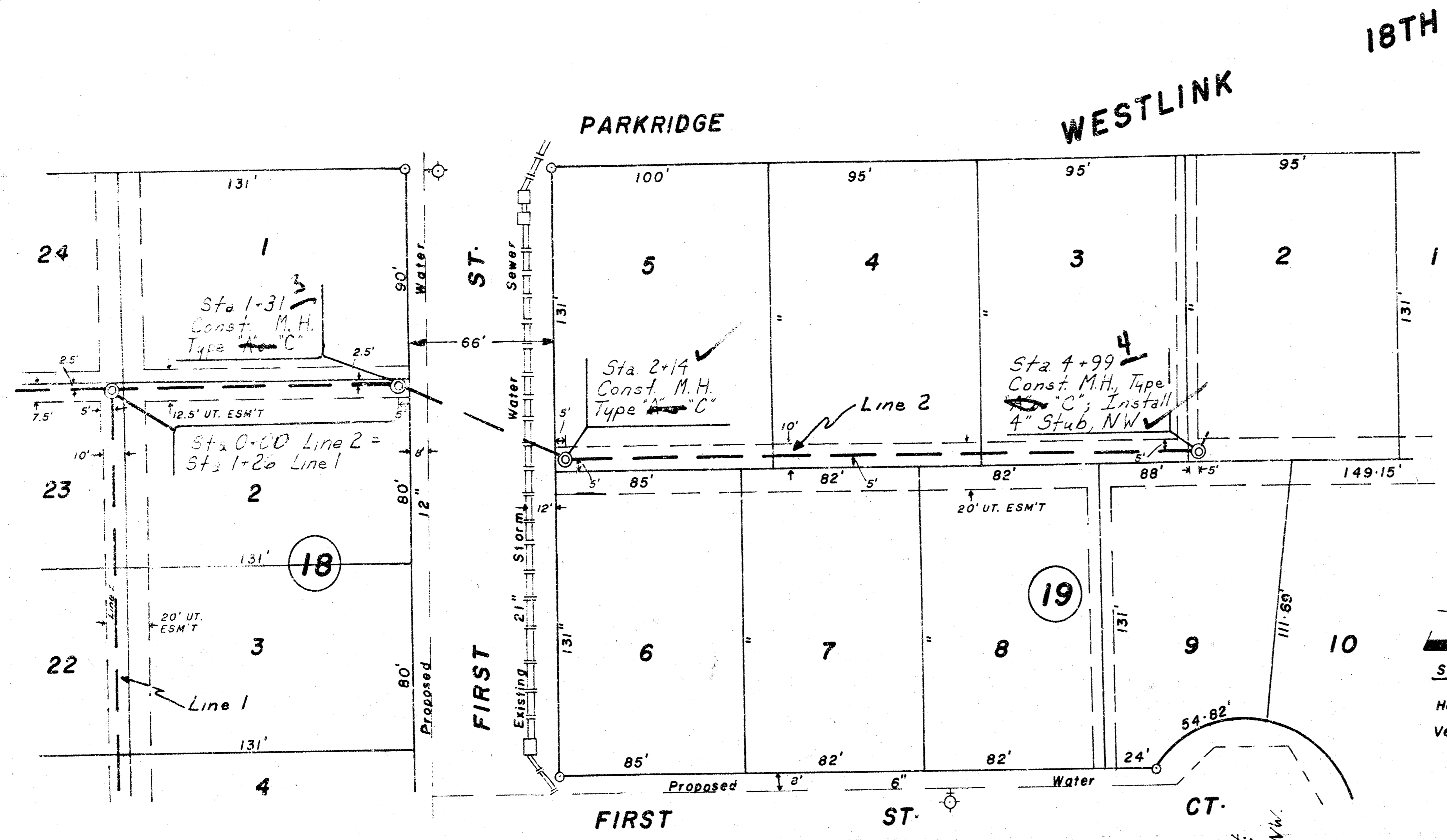
As Built
7/8/1
JBB

77 Lin. Ft. of 8" PVC Pipe @ 0.40% Grade Alt. 8" A.B.S. Comp. Pipe or 8" Clay Pipe
LAT. I, MAIN 9, S. W. I.
Phase II
Proj. NO: 468-76-245-80639-000
000-001

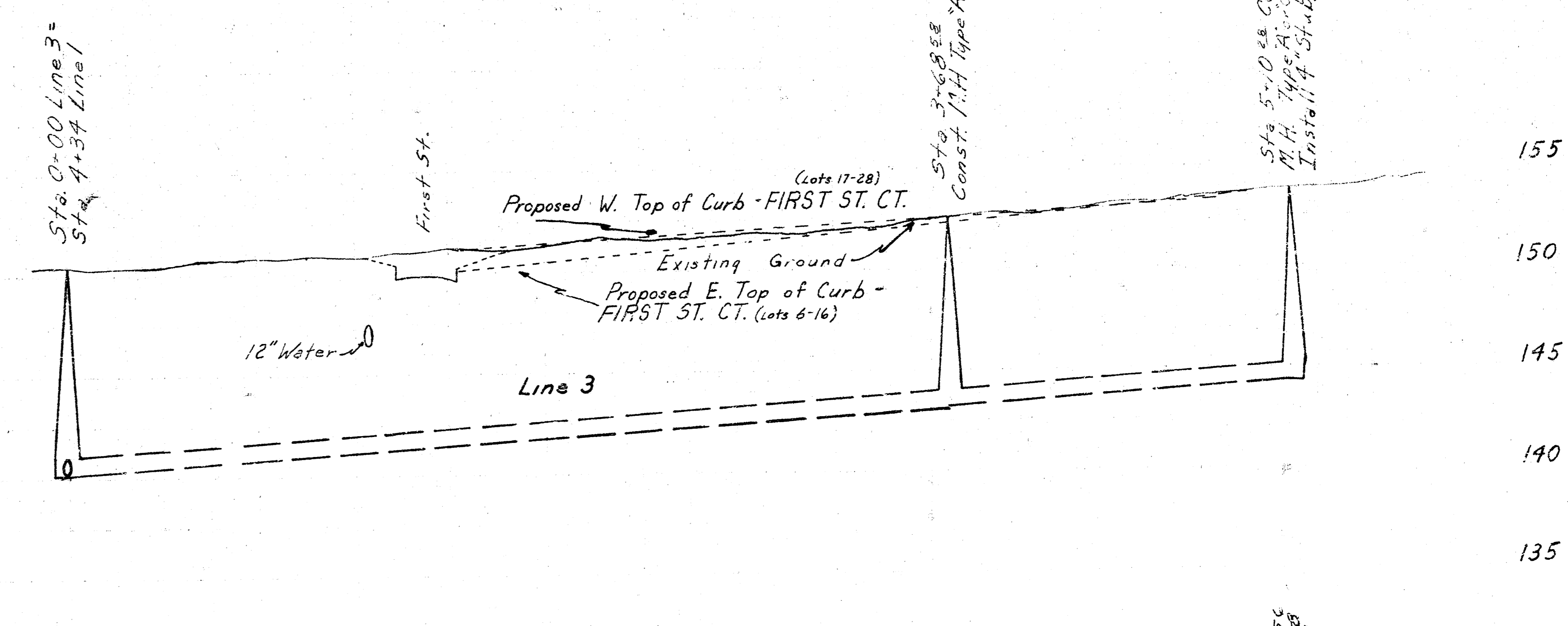
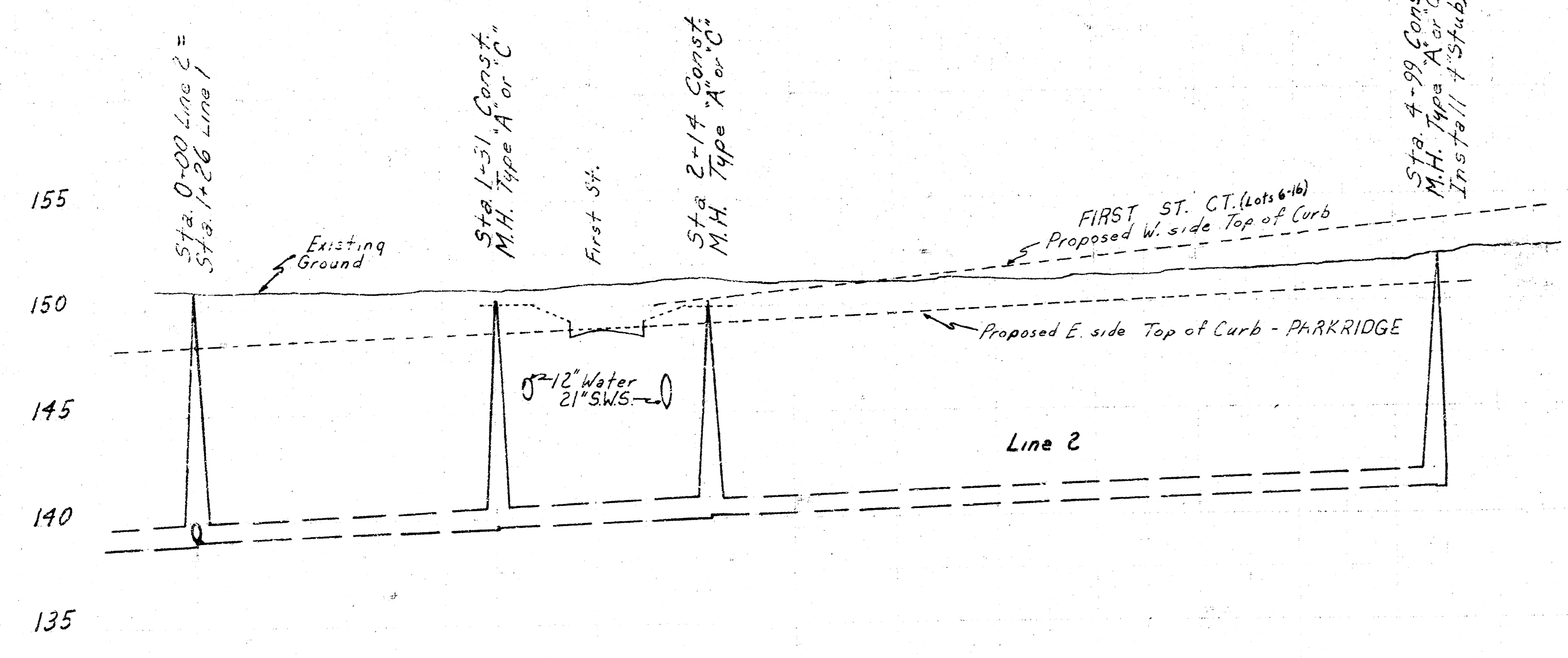
Line I
Line IB

LINE 2

LINE 3



Scale: 1" = 40' Plan
 Horiz. 1" = 40' Profile
 Vert. 1" = 5'
 ○ - Iron



Line 1 Flo. Out 138.99
 Line 1 Flo. In 132.03
 Line 2 Flo. In 131.70
 60
 139.48
 Flo. Out 139.60-73
 Flo. In 140.46
 140.66
 140.83
 Flo. Out 141.20-30
 4-Stub M.I. 61

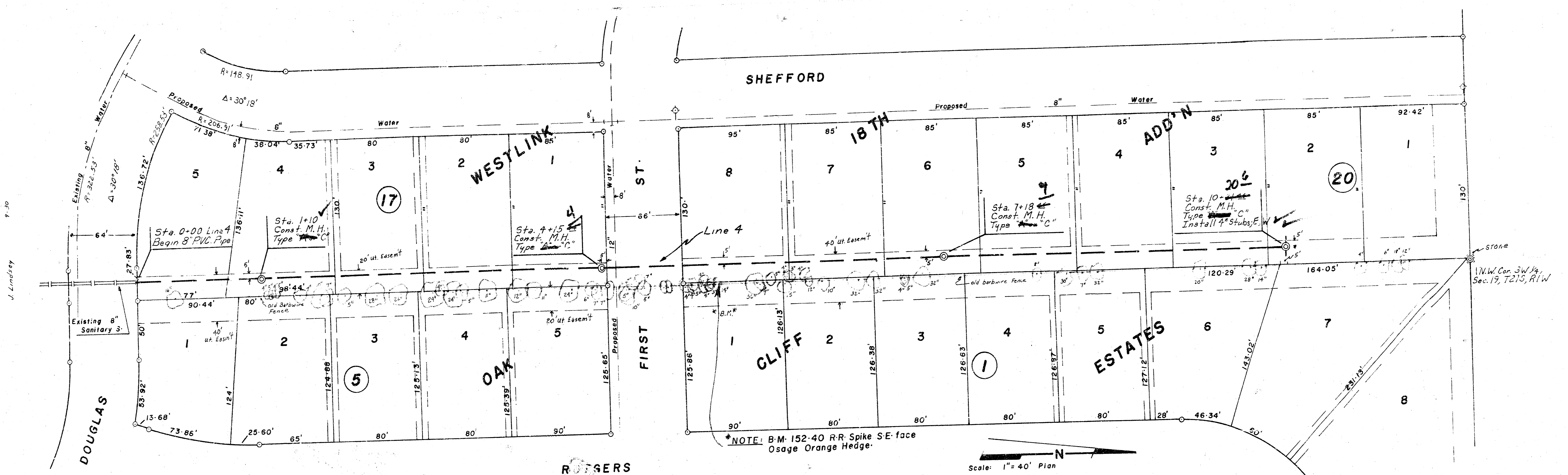
499.0 Lin. Ft. 8" P.V.C. Pipe @ 0.40% Grade
 Alt. 8" A.B.S. Composite Pipe or 8" Clay Pipe

Line 1 Flo. Out 140.00
 Line 1 Flo. In 140.00
 Line 3 Flo. In 140.00
 141.02
 140.96
 141.84
 142.66
 Flo. Out 143.22-30
 Flo. In 143.22-40
 143.58
 Flo. Out 144.35-50
 4.5-Stub 144.71

510.28 Lin. Ft. 8" P.V.C. Pipe @ 0.82% Grade
 Alternate 8" A.B.S. Composite Pipe or 8" Clay Pipe

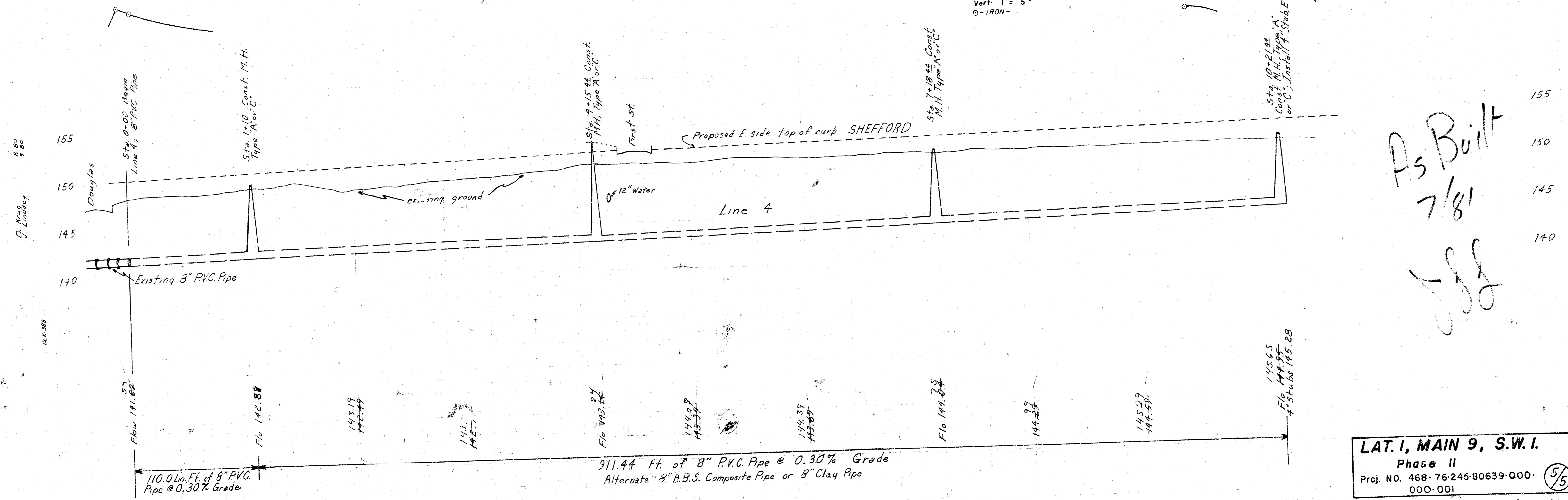
LAT. 1, MAIN 9, S.W. I.
Phase II
 Proj. NO. 468-76-245-80639-000
 000-001

FILMED FROM THE BEST AVAILABLE COPY.....



NOTE: B.M. 152-40 R.R. Spike SE-face
Osage Orange Hedge

Scale: 1" = 40' Plan
 Horiz: 1" = 40' Profile
 Vert: 1" = 5' Profile
 ○ - IRON



As Built
 7/81
 JSS

LAT. I, MAIN 9, S.W. I.
 Phase II
 Proj. NO. 468-76-245-80639-000
 000-001

FILMED FROM THE BEST