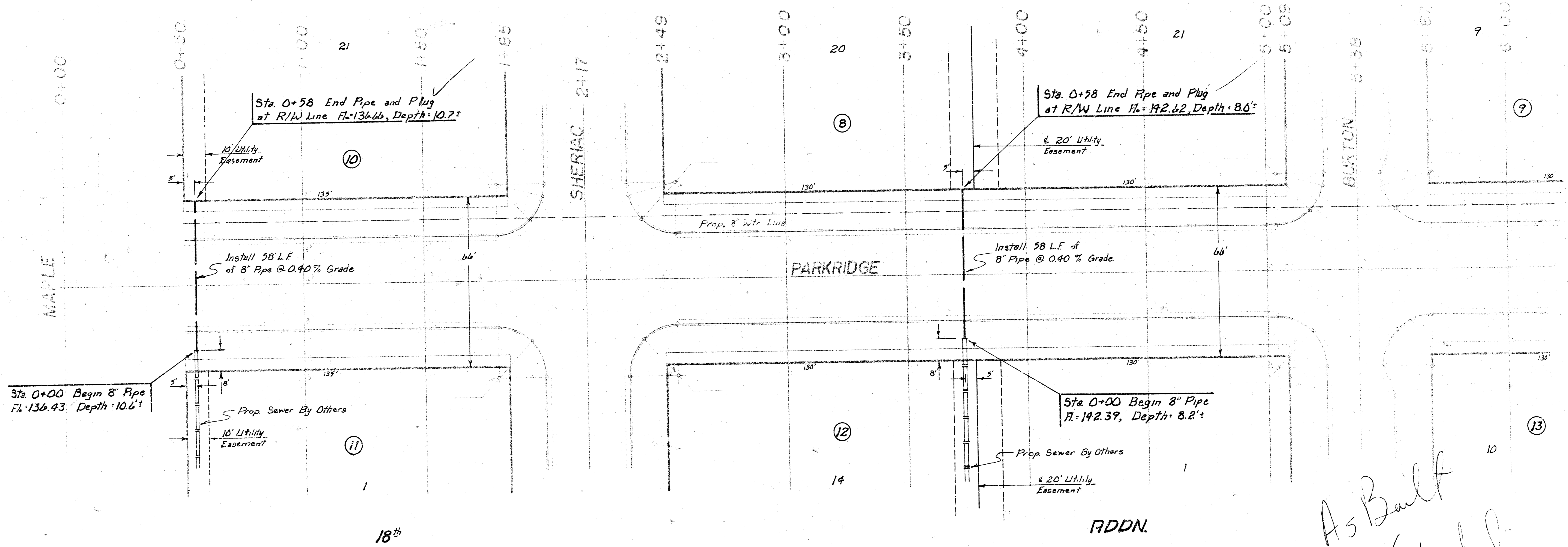


B.M. 143<sup>rd</sup> "d" Ctr. Hdwl. S. End R.C.P.  
S. Side MAPLE, 1/2 mile W. of MAPLE Rd.

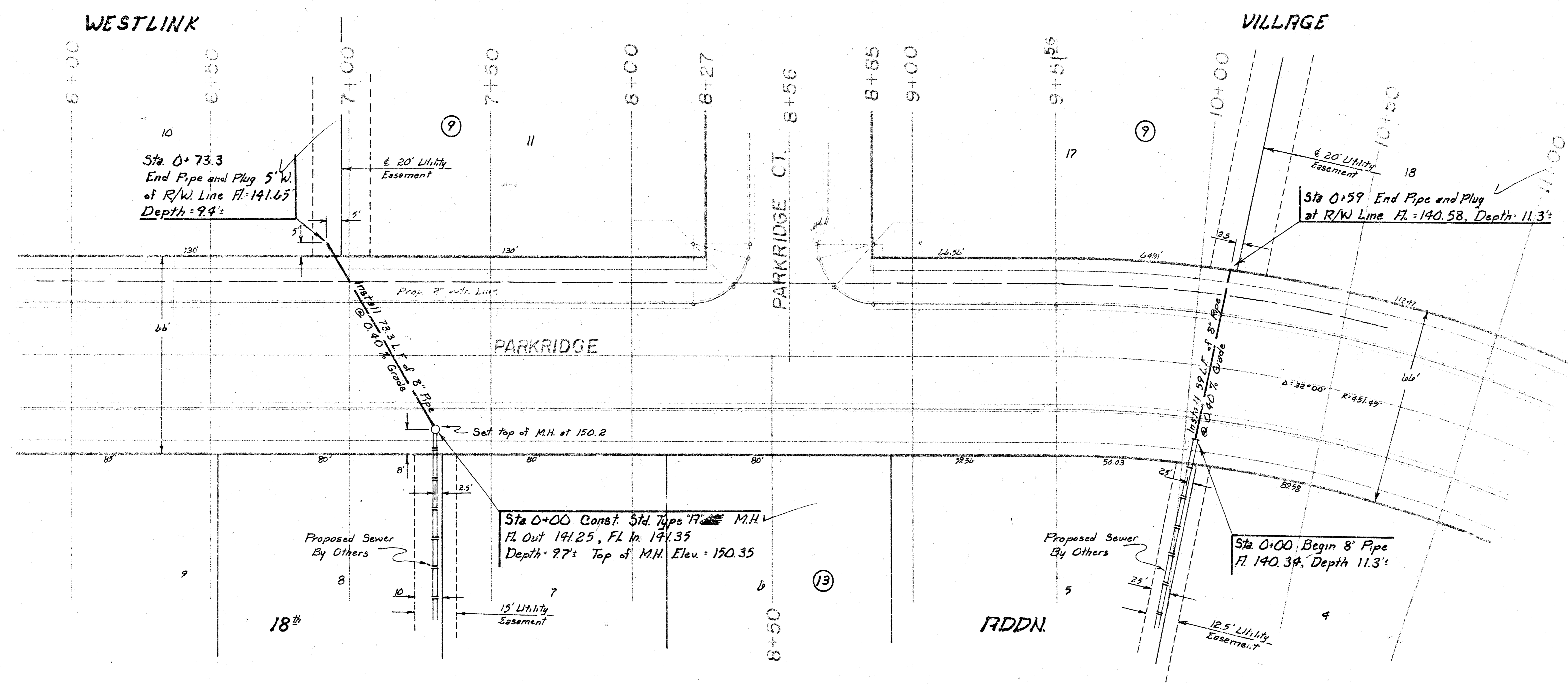
WESTLINK

VILLAGE



As Built  
4/8/18  
Phase I  
Lat. 3, Main 9, Southwest Interceptor  
Proj. No.: 468-76-245-80641-000-000-001

B.M. 143<sup>rd</sup> at Ctr. Hdwl. S. End R.C.P.  
S. Side MAPLE, 1/2 mile W. of MAPLE Rd.

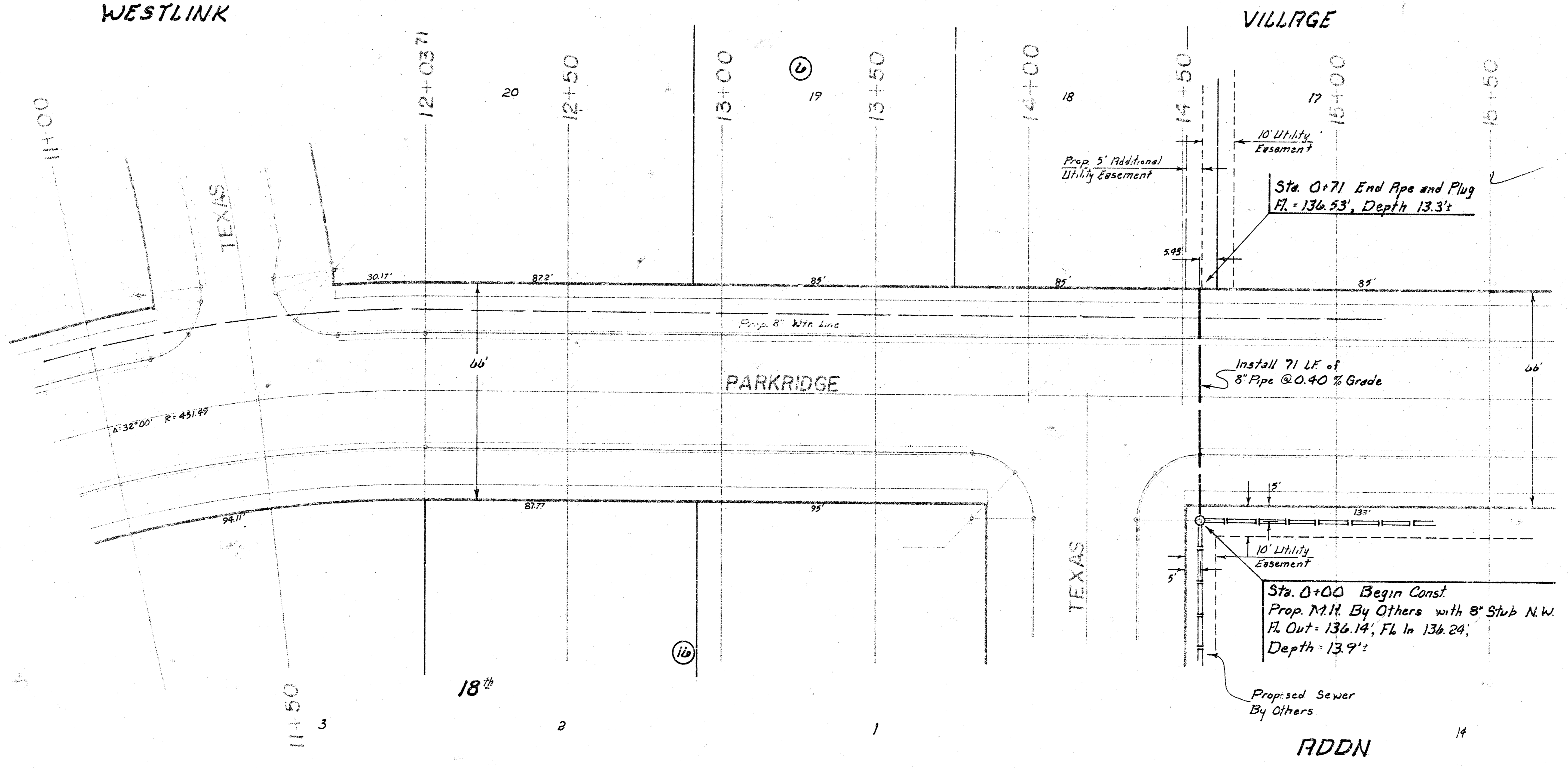


Phase I  
Lat. 3; Main 9, Southwest Interceptor  
Proj. No. 968.74-2+5-80641-000-000-001

Sheet 2 of 3

FILMED FROM THE BEST

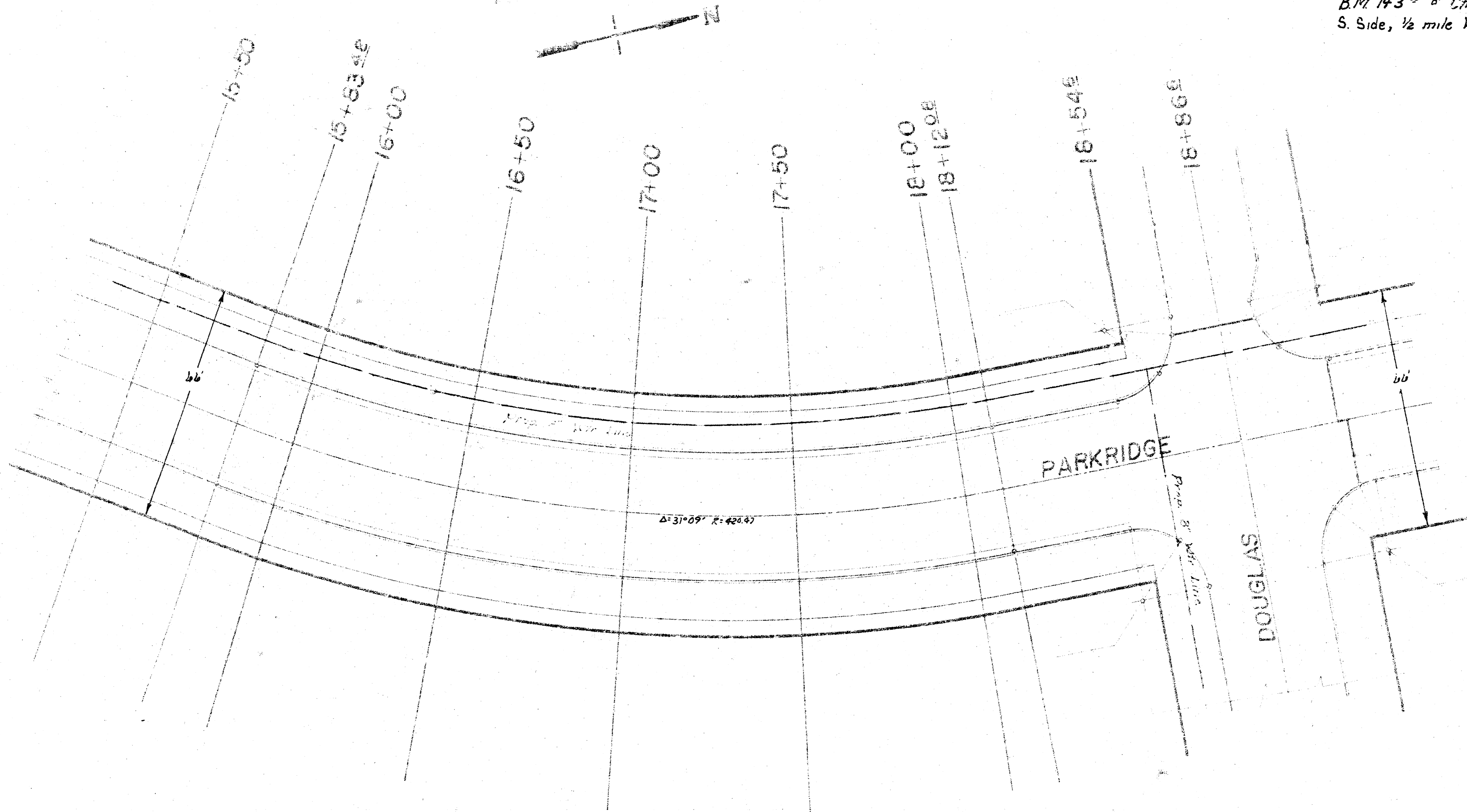
B.M. 143 20' 10" Ctr. Hdwt. S. End R.C.P.  
S. Side MIDDLE, 1/2 mile W. of MIDDLE Rd.



Phase I  
Lot 3, Main 9, Southwest Interceptor  
Proj. No.: 468-76-245-80641-000-000-001

FILMED FROM THE BEST

B.M. 143<sup>rd</sup> 10' Ctr. Hdw. S.E. rd R.C.P.  
S. Side, 1/2 mile W. of MARIE Rd.



Phase I  
Lot 3, Main 9, Southwest Interceptor  
Proj. No.: 468-76-245-80641-000-000-001

Sheet 4 of 4

FILMED FROM THE BEST

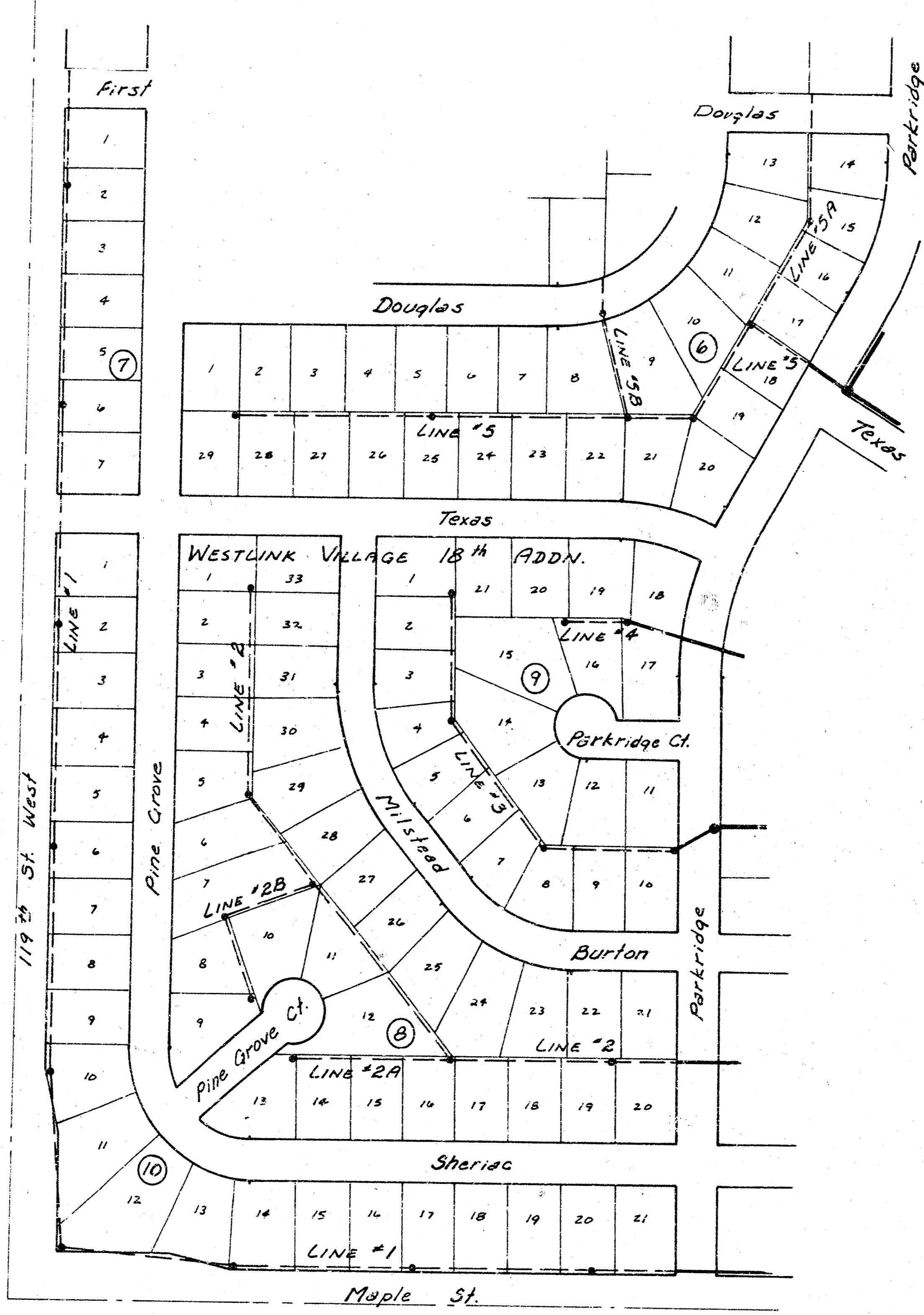
LAT 3 , MAIN 9, SW. INTERCEPTOR , PHASE II

CITY OF WICHITA

R.W. BRUGGEMAN

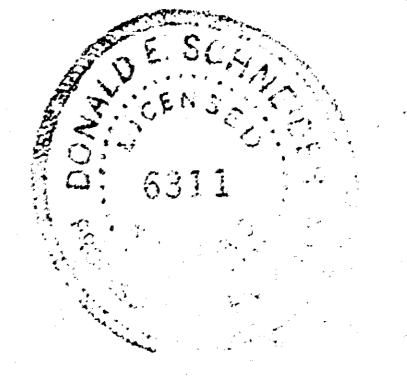
DIRECTOR OF ENGINEERING / CITY ENGINEER

PROJ. NO. 468-76-245-80641-000-000-001



|           |                |
|-----------|----------------|
| LINE # 1  | SHEETS 2, 3, 4 |
| LINE # 2  | SHEETS 5, 6    |
| LINE # 2A | SHEET 5        |
| LINE # 2B | SHEET 6        |
| LINE # 3  | SHEET 7        |
| LINE # 4  | SHEET 7        |
| LINE # 5  | SHEET 8        |
| LINE # 5A | SHEET 9        |
| LINE # 5B | SHEET 9        |

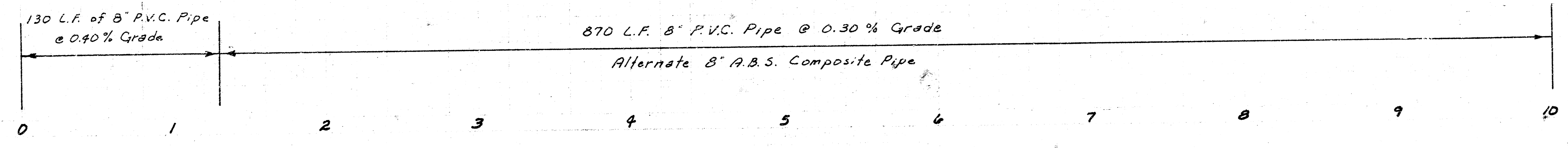
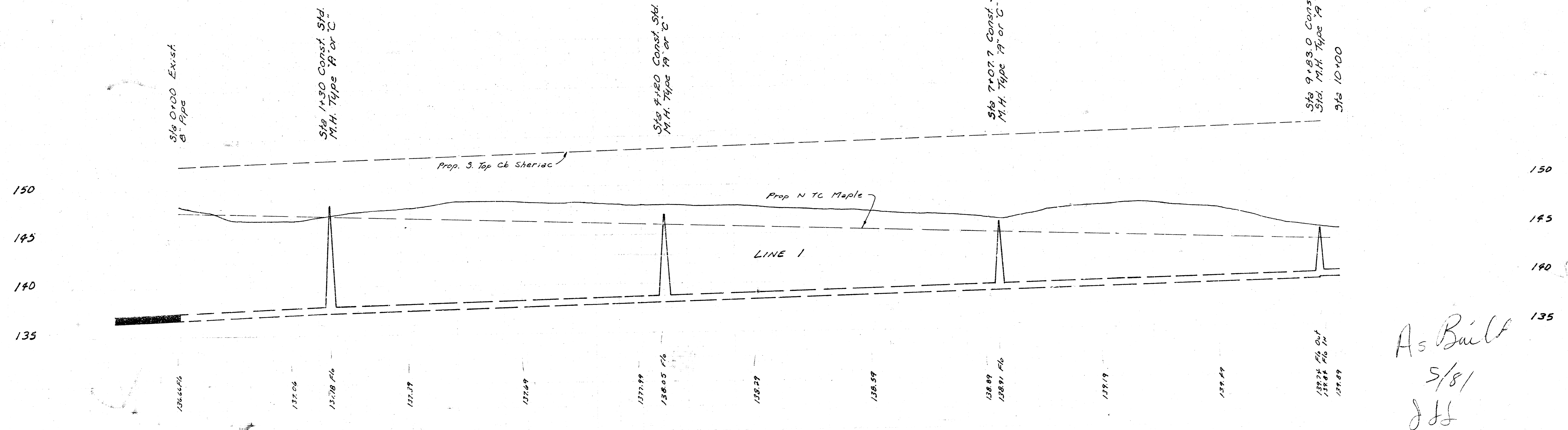
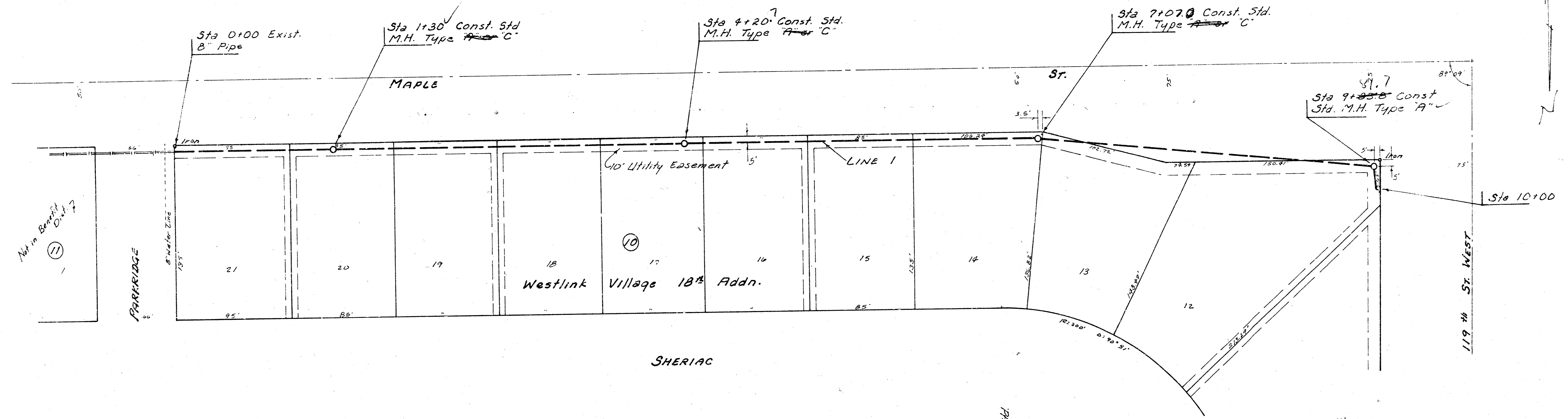
*As Built*  
*5/8/*  
*JH*



B.M. 143.06 "a" cut in center of headwall south end of R.C.P. on south side of Maple approx. 1/4 mile East of 119th St. West.  
 B.M. 144.26 "i" center south headwall R.C.B. South side Maple west of Parkridge North.

B.M. 143.25 R.R. spike NW face P.P. SE corner 119th St. West & Maple  
 B.M. 142.41 R.R. spike S-face P.P. NW corner 119th St. West & Maple

Scale Plan 1" = 40'  
 Profile 1" = 90' Horz.  
 1" = 5' Vert.

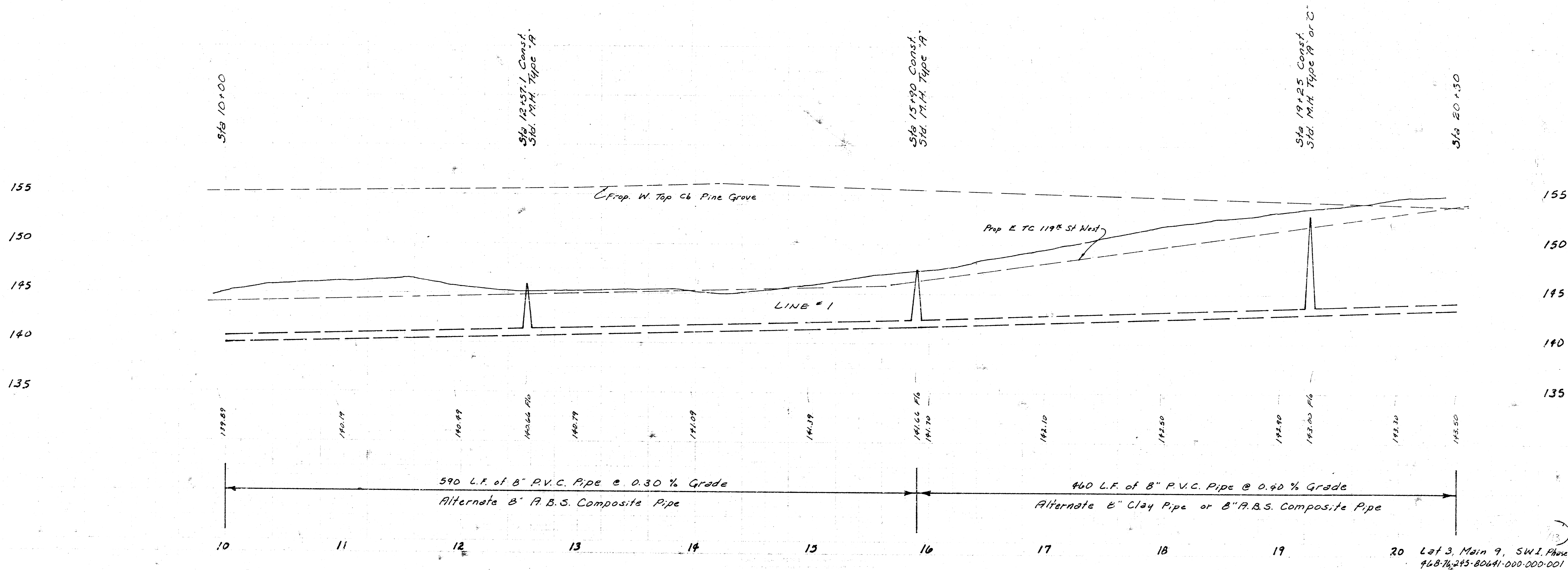
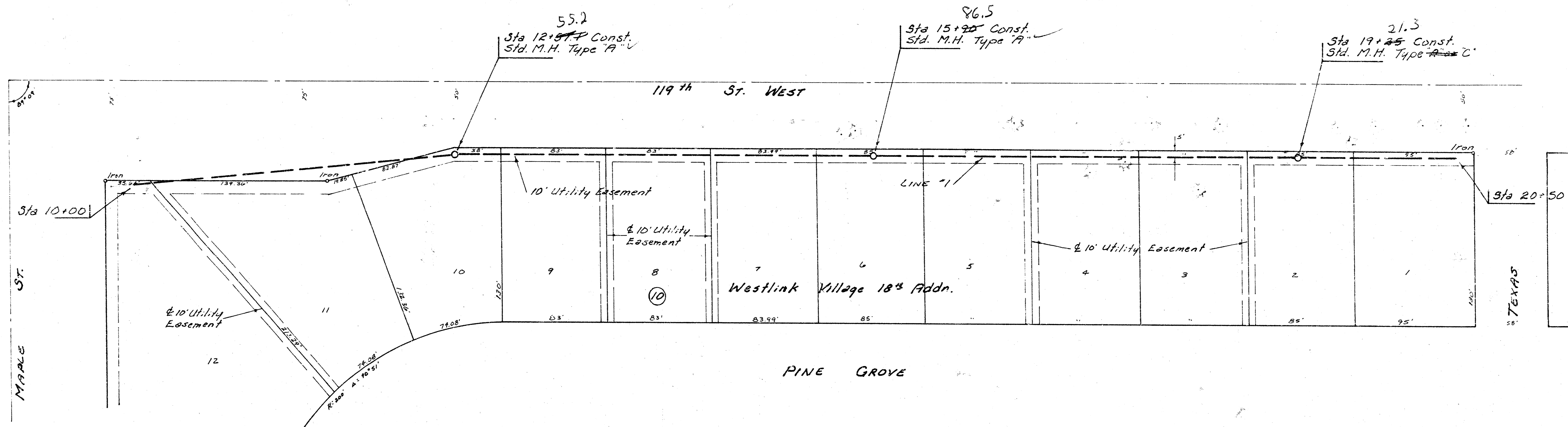


As Built  
 5/8/1  
 JH

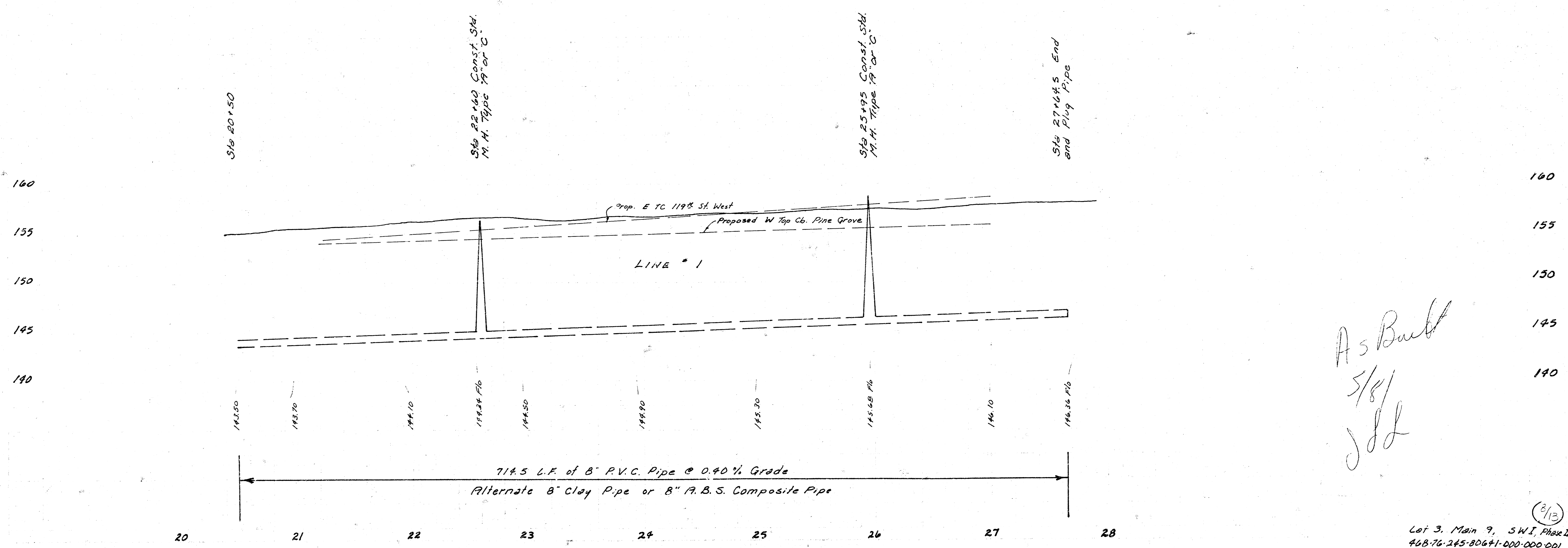
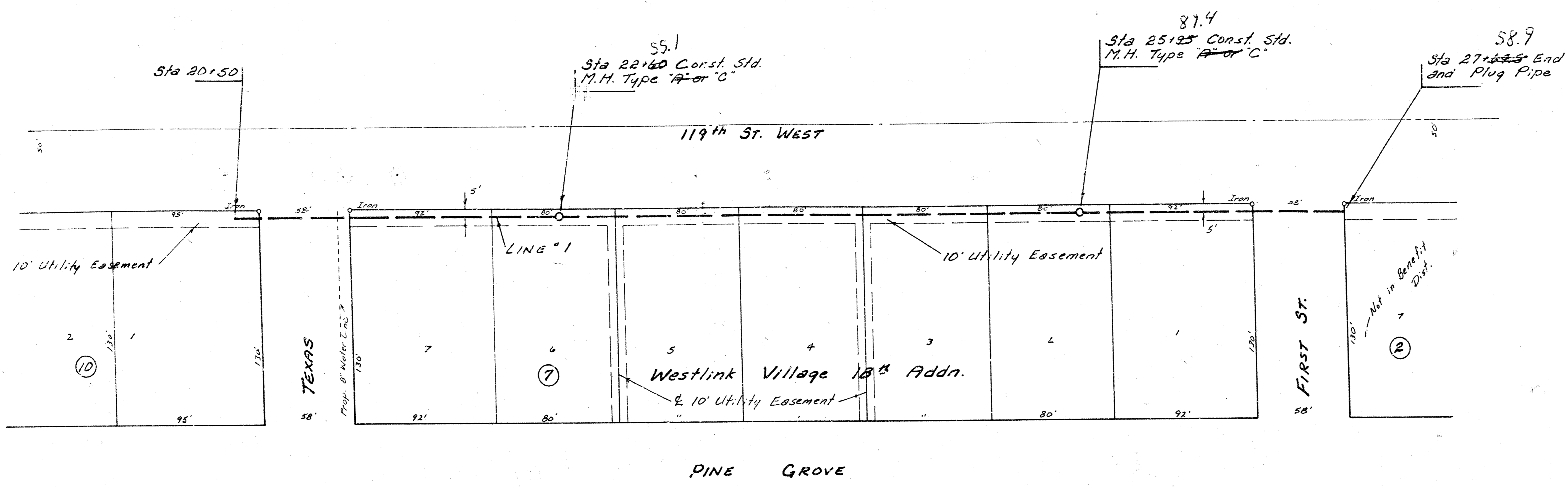
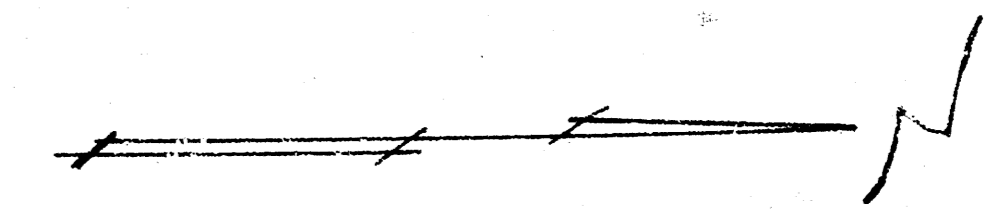
Lot 3, Main 9, SW1, Parcel  
 488-76-245-80641-000-000-001

FILED FROM THE BEST

Scale Plan 1" = 40'  
 Profile 1" = 40' Horiz.  
 1" = 5' Vert.



Scale Plan 1" = 40'  
 Profile 1" = 40' Horiz.  
 1" = 5' Vert.

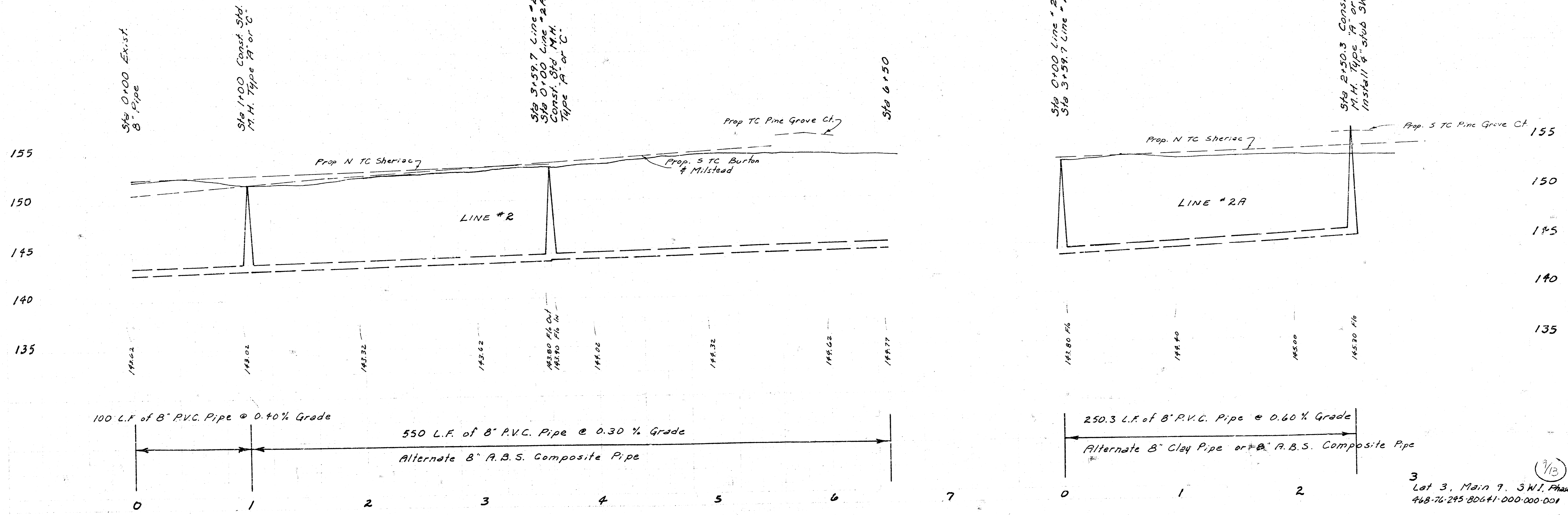
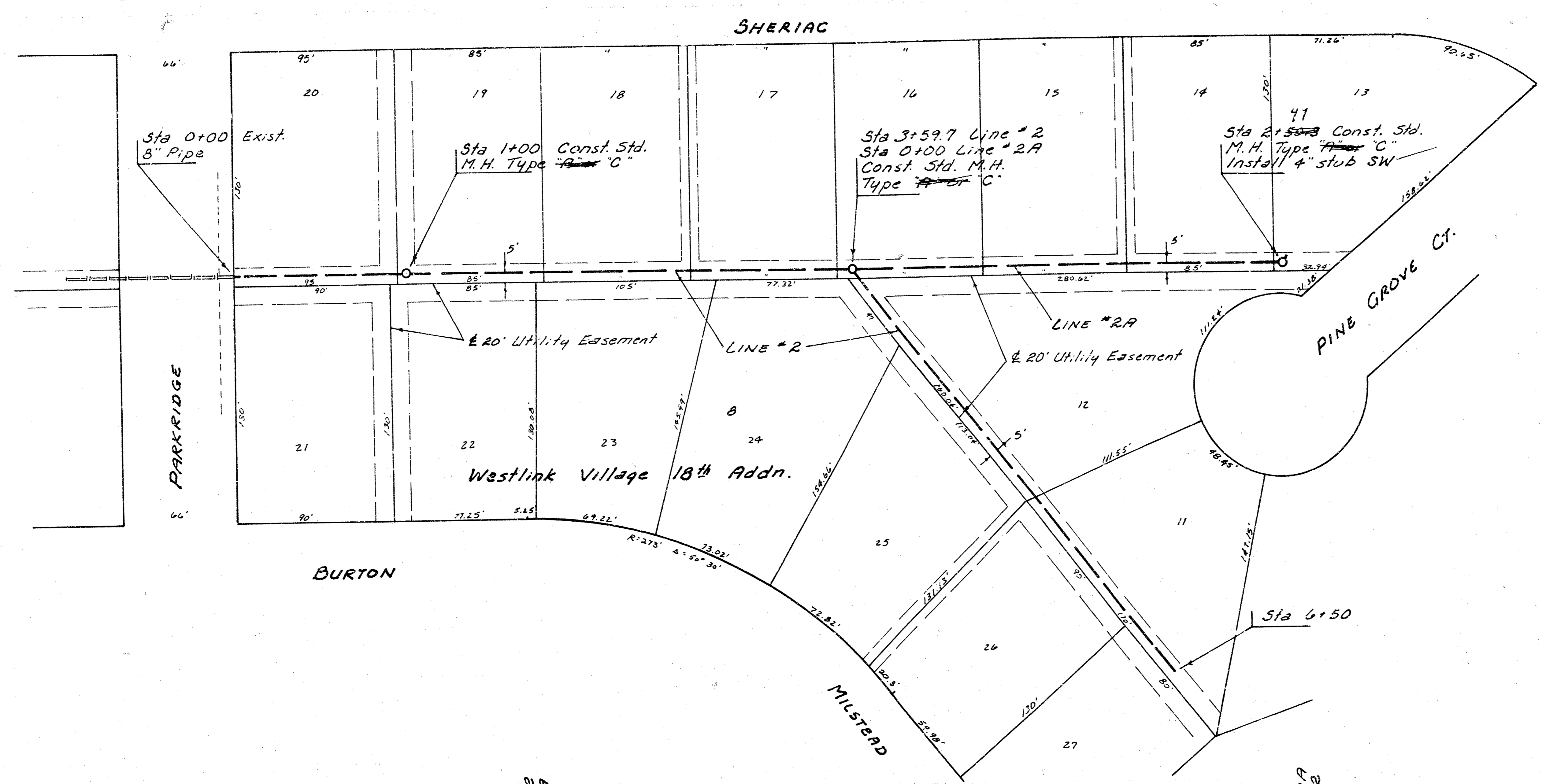


As Built  
 5/8/1  
 JDL

(2/13)  
 Lot 3, Main 9, SW I, Phase II  
 468-76-245-80641-000-000-001

FILMED FROM THE BEST

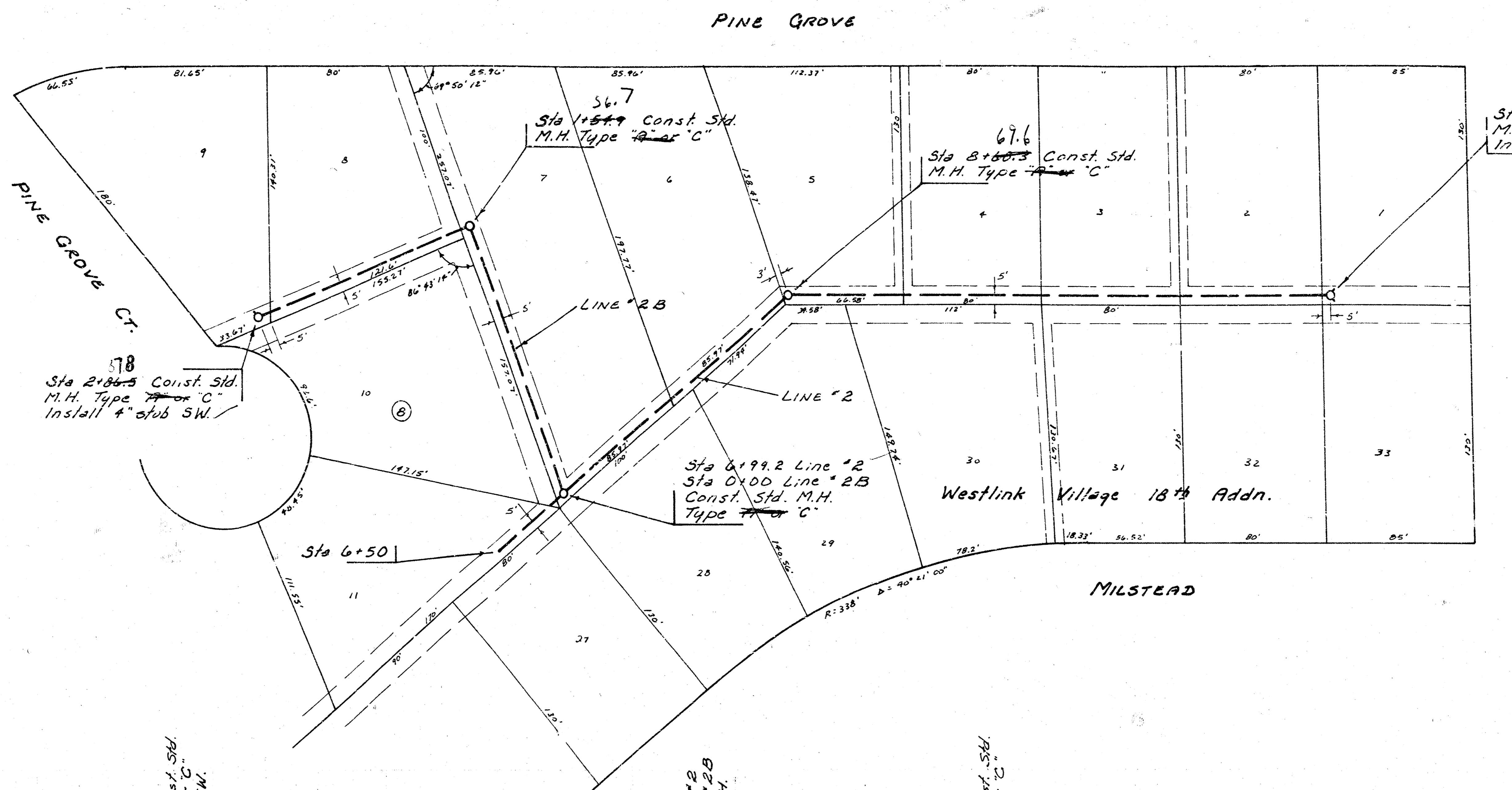
Scale Plan 1" = 40'  
 Profile 1" = 40' Horiz.  
 1" = 5' Vert.



3  
 Lat 3, Main 9, SW I, Phase II  
 468-76-295-80641-000-000-001

FILMED FROM THE BEST

Scale Plan 1" = 40'  
 Profile 1" = 40' Horz.  
 1" = 5' Vert.



Sta 0+00 Line 2B  
 Sta 2+99.2 Line 2

Sta 1+54.7 Const. Std.  
 M.H. Type 19 or C

Sta 2+86.5 Const. Std.  
 M.H. Type 19 or C  
 Install 4" stub SW

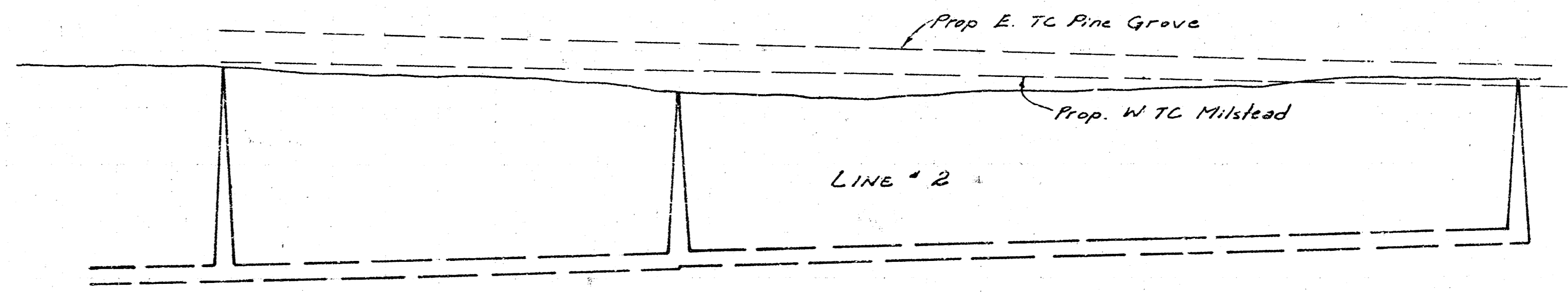
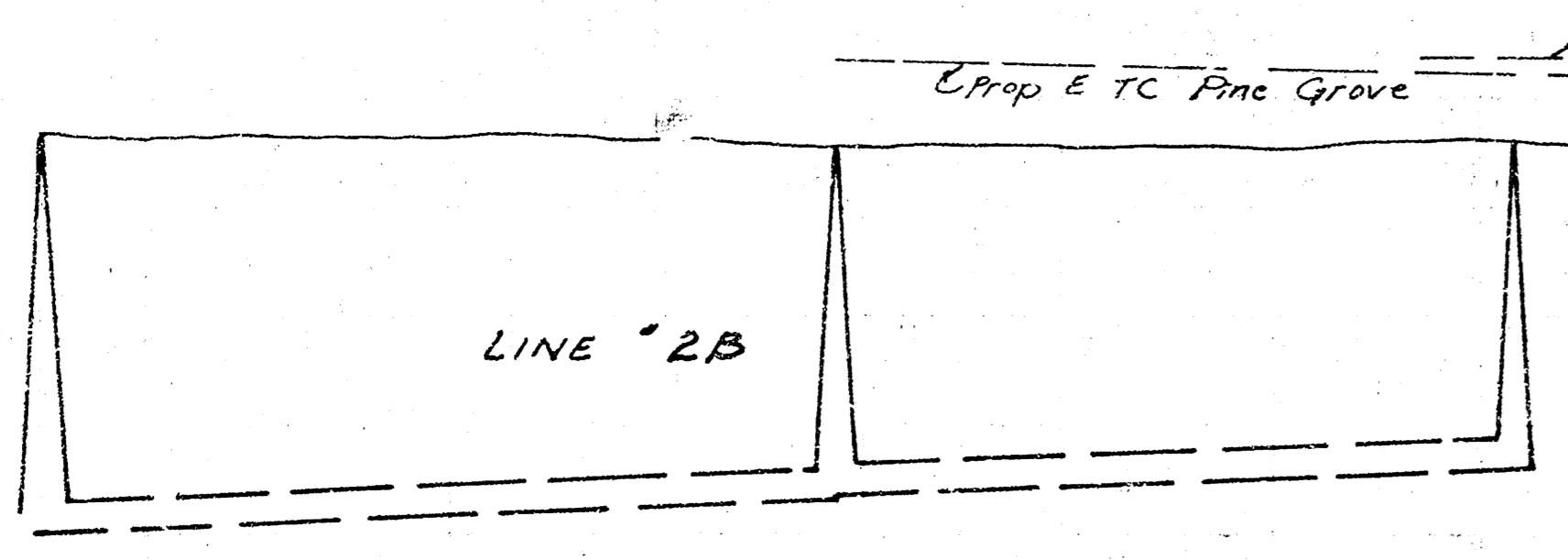
Sta 6+50

Sta 6+99.2 Line 2  
 Sta 8+00 Line 2B  
 Const. Std. M.H.  
 Type 19 or C

Sta 8+68.3 Const. Std.  
 M.H. Type 19 or C

Sta 11+78.5 Const. Std.  
 M.H. Type 19 or C  
 Install 4" stubs NE & NW

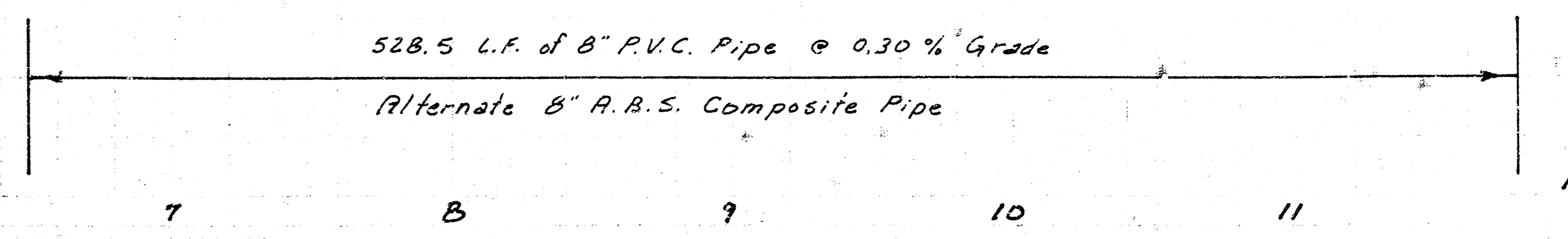
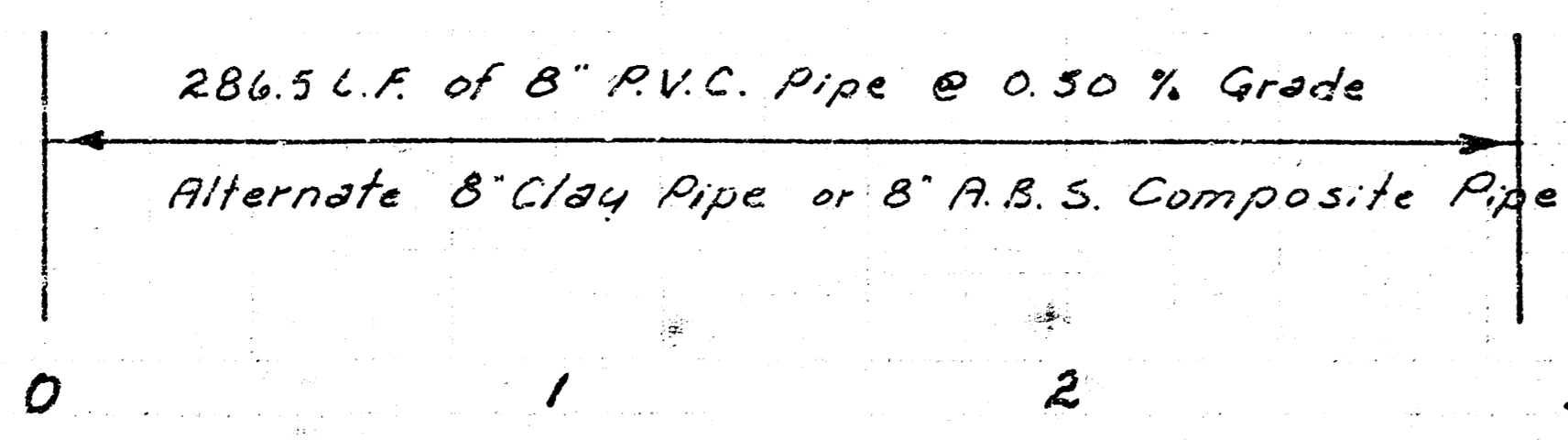
155  
150  
145  
140



155  
150  
145  
140

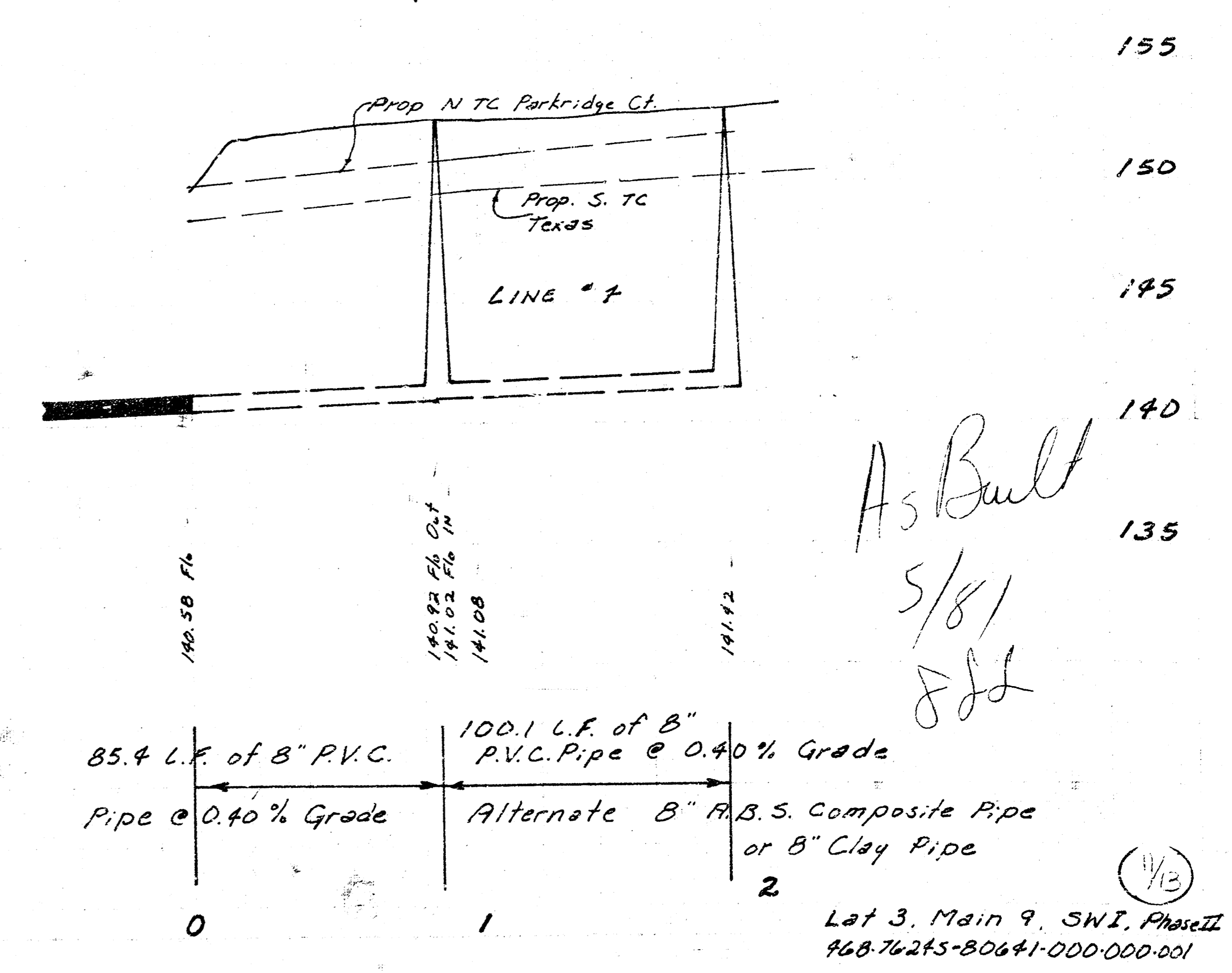
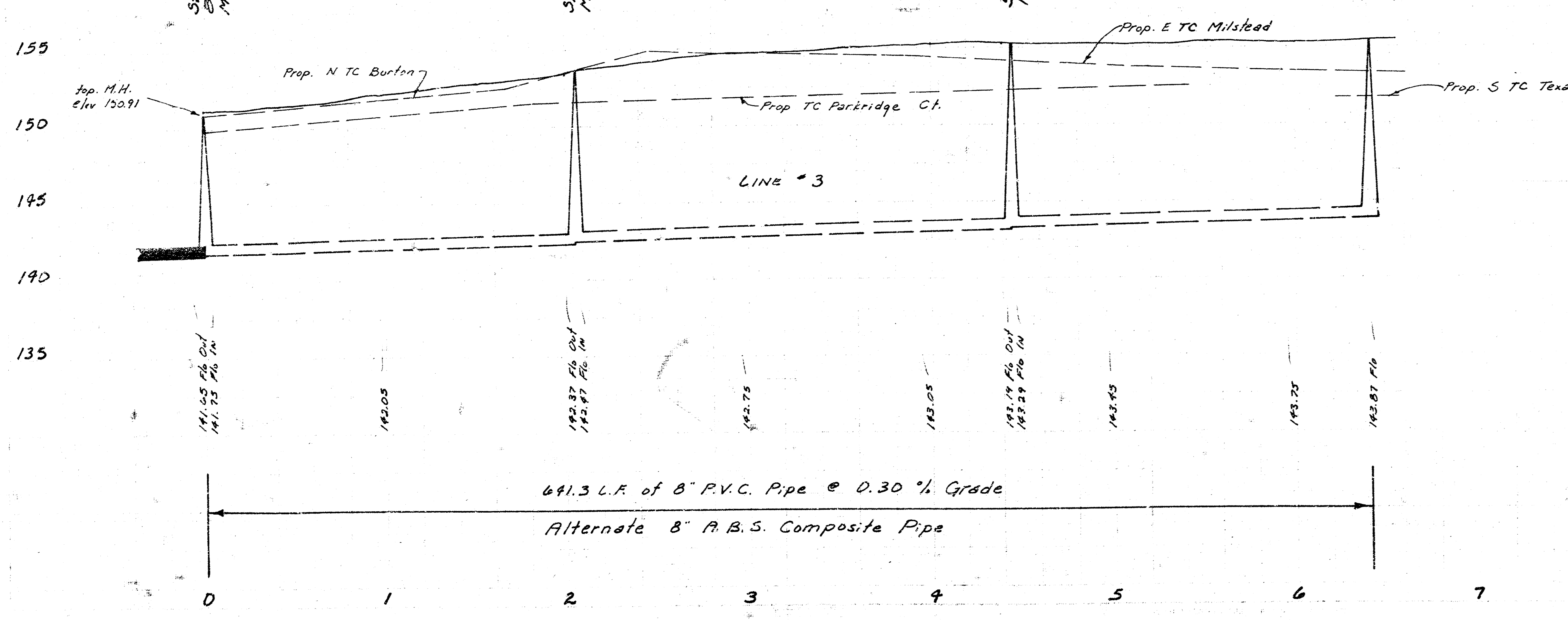
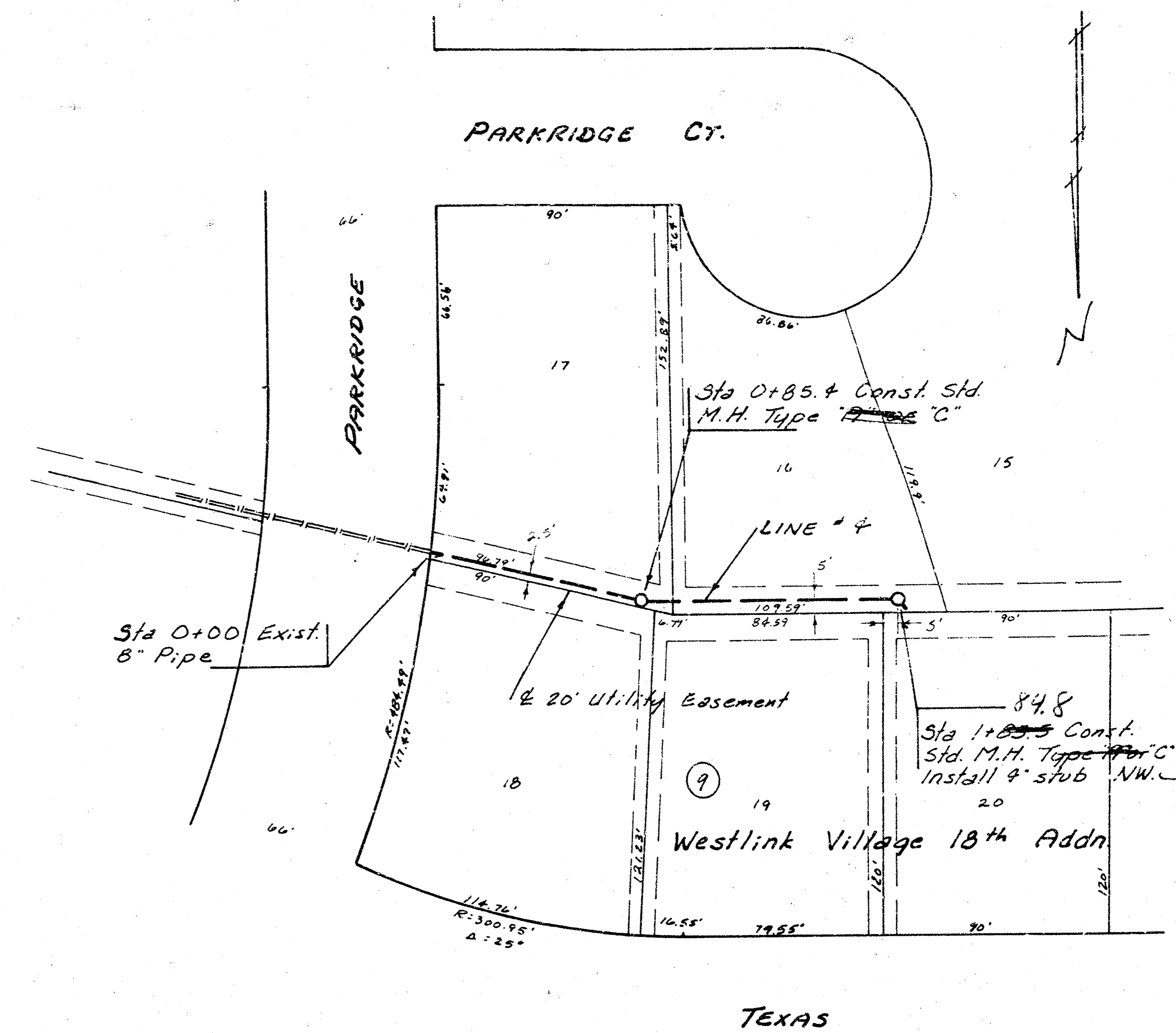
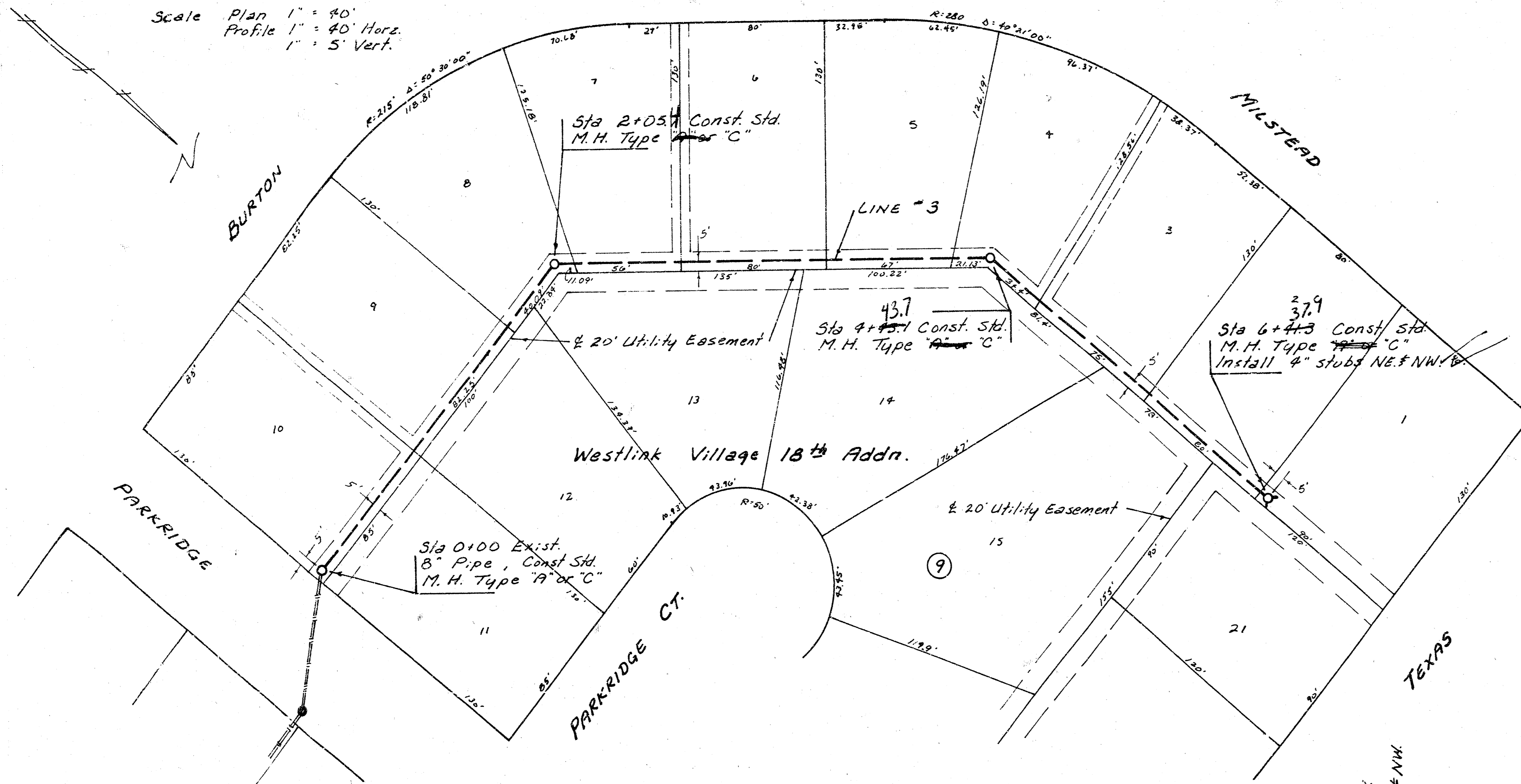
145.92 Elev. Out  
145.02 Elev. In  
146.52  
146.12  
146.52 Elev. In

144.77  
144.92 Elev. In  
145.22  
145.92 Elev. Out  
145.52 Elev. In  
145.62  
145.72  
146.22  
146.92 Elev. In



12  
 Lot 3, Main 9, SW1, Phase II  
 408-76245-80641-000-000-001

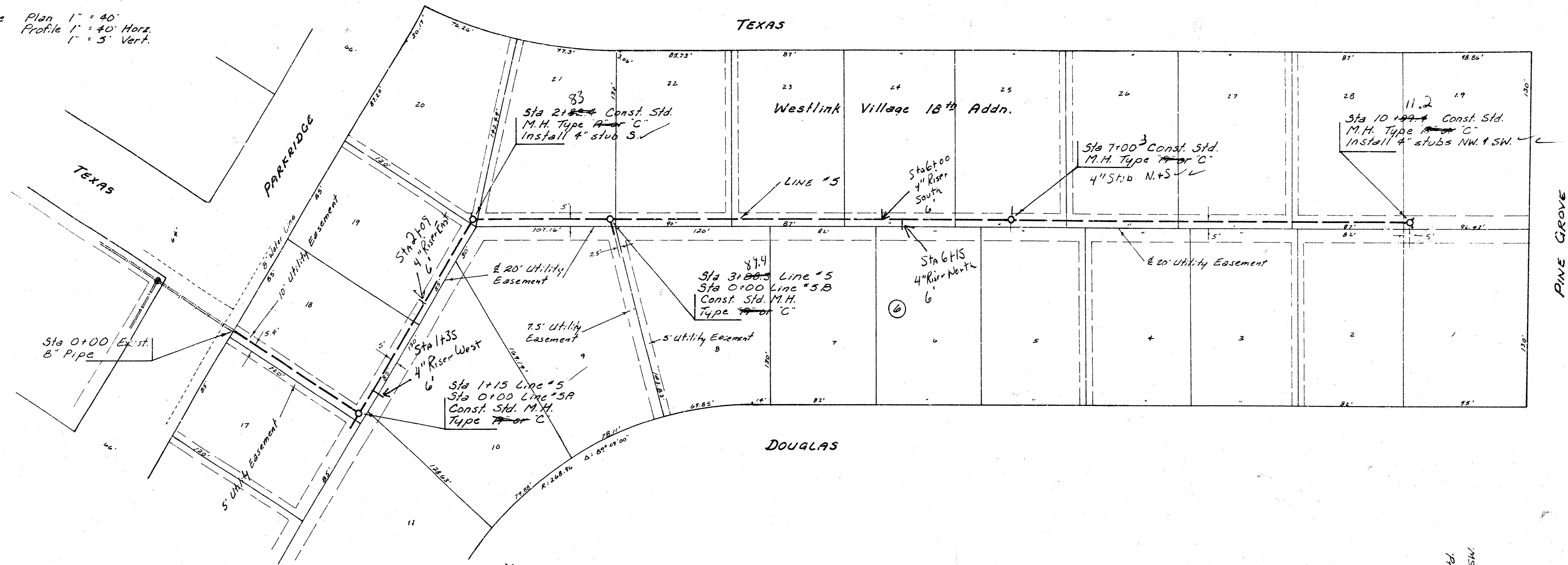
Scale Plan 1" = 40'  
 Profile 1" = 40' Horiz.  
 1" = 5' Vert.



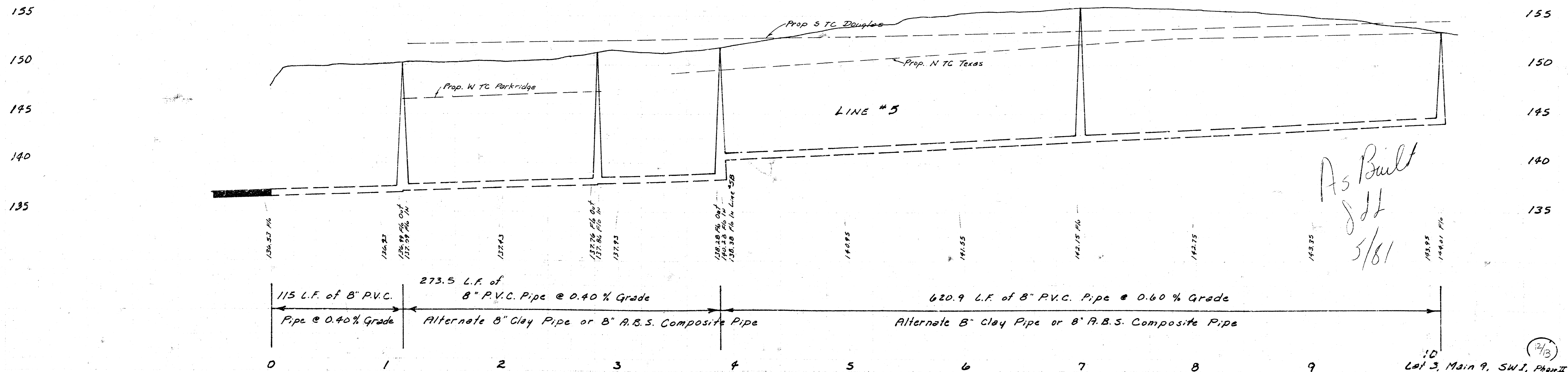
As Built  
 5/8/1  
 JLL

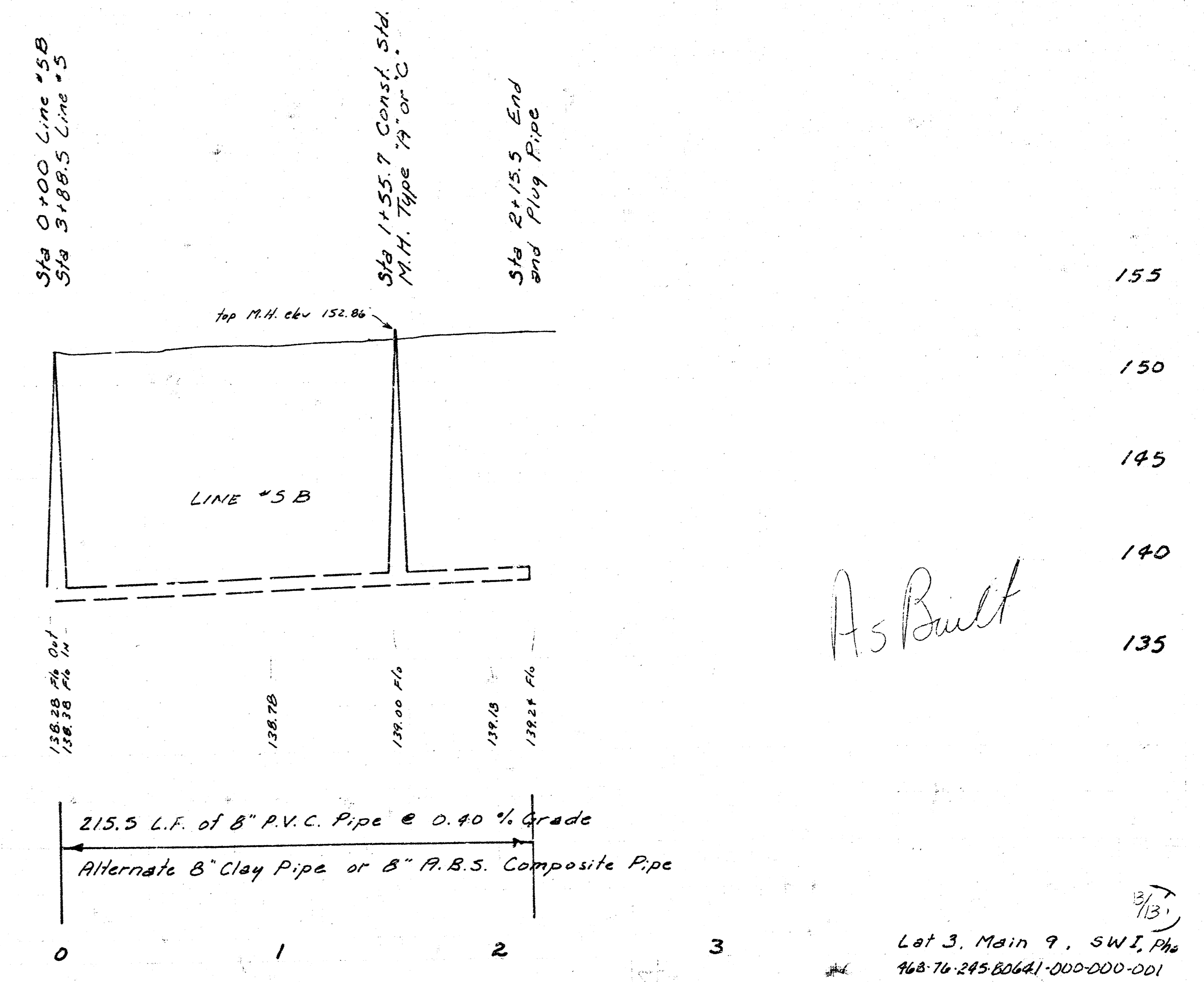
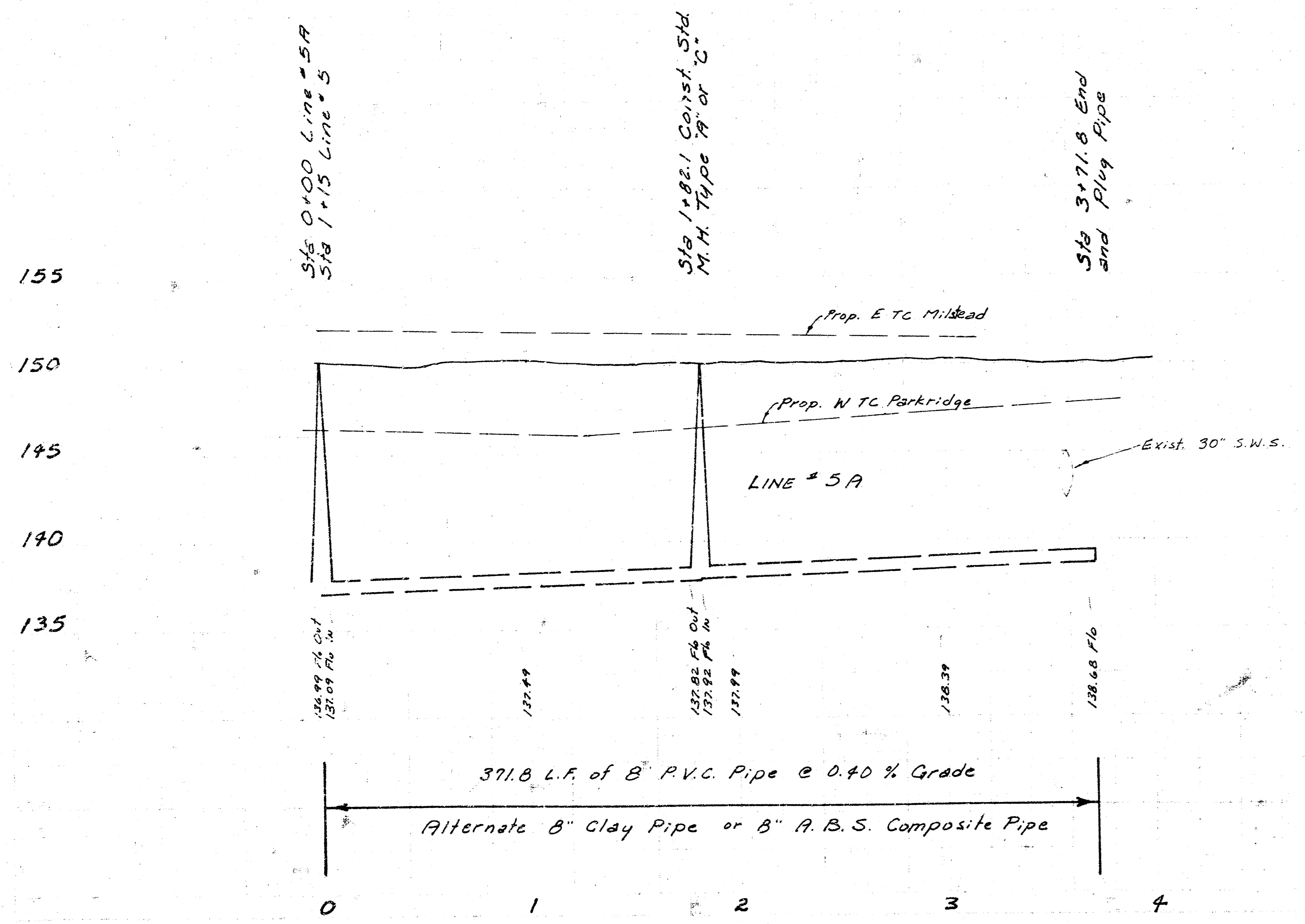
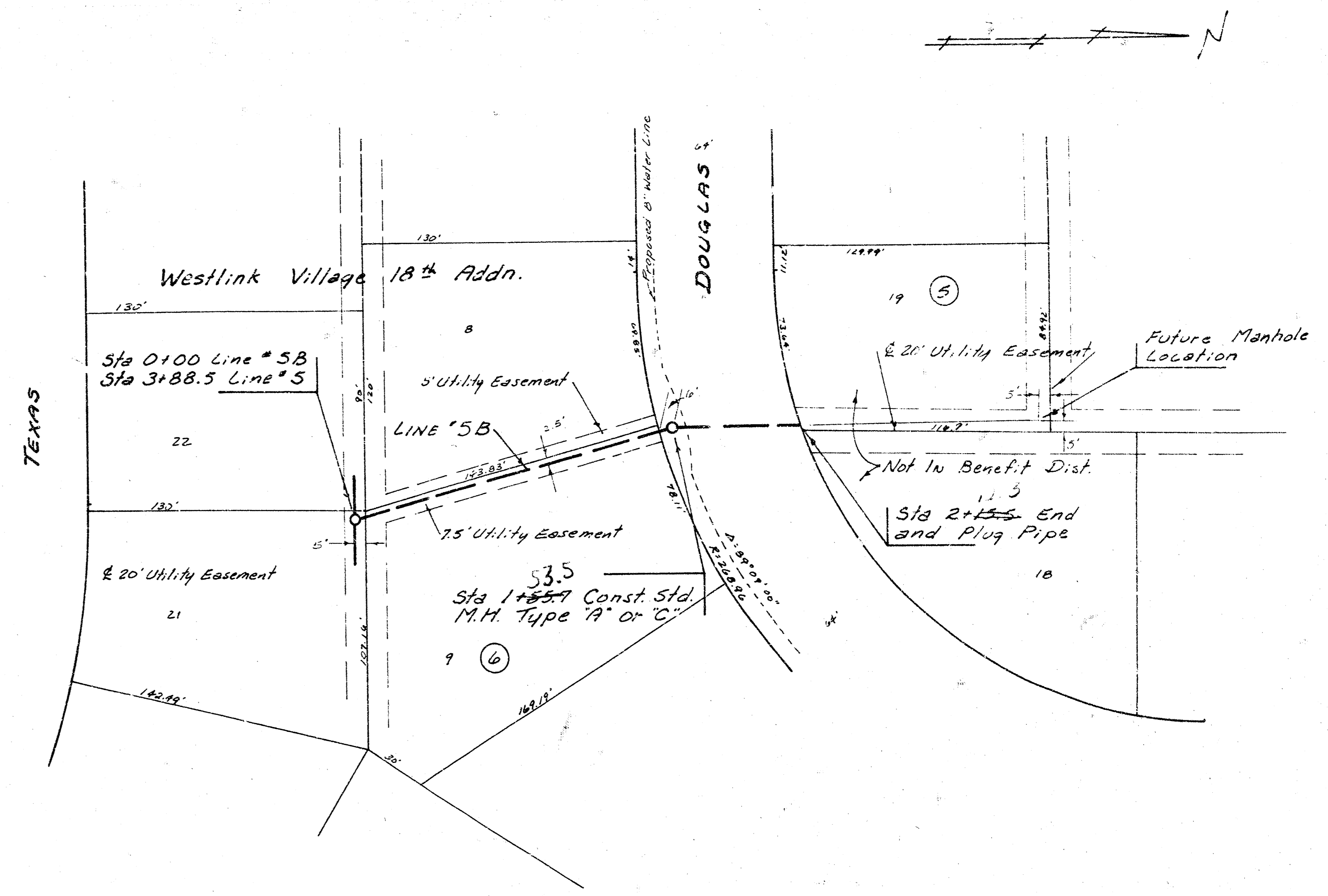
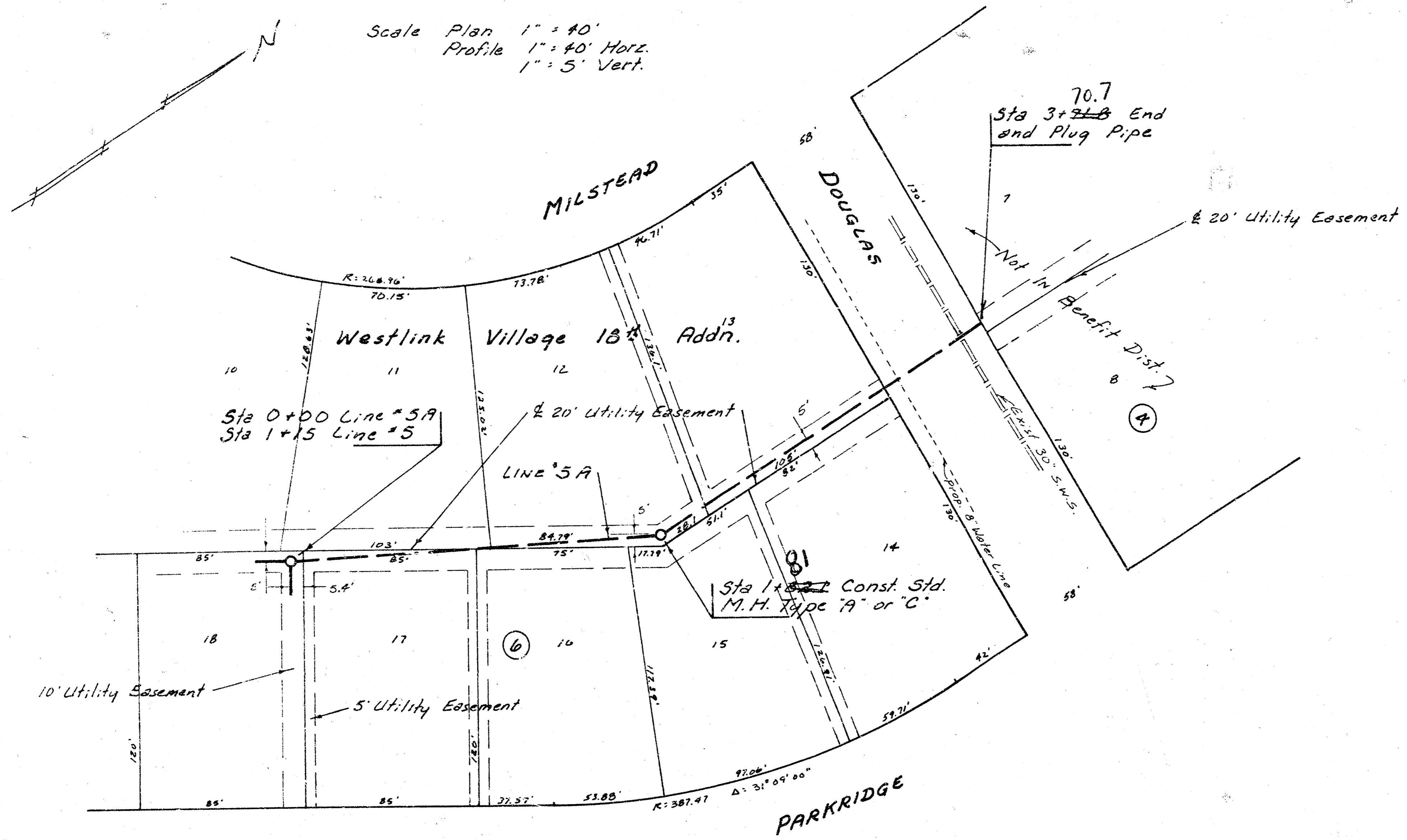
Lot 3, Main 9, SWI, Phase II  
 968-7625-8064-1-000-000-001

Scale Plan 1" = 40'  
 Profile 1" = 40' Horiz.  
 1" = 5' Vert.



Sta 0+00 Exist. 8" Pipe  
 Sta 1+15 Line #5  
 Sta 0+00 Line #5A  
 Const. Std. M.H. Type 19 or C  
 Sta 2+82.4 Const. Std. M.H. Type 19 or C  
 Install 4" stub S  
 Sta 3+88.5 Line #5  
 Sta 0+00 Line #5B  
 Const. Std. M.H. Type 19 or C  
 Sta 7+00 Const. Std. M.H. Type 19 or C  
 Sta 10+09 Const. Std. M.H. Type 19 or C  
 Install 4" stubs NW & SW





As Built