

LAT 5 , MAIN 9 , SW. INTERCEPTOR
 CITY OF WICHITA
 RAY BRUGGEMAN - CITY ENGINEER
 PROJ. NO. 468-76-245-80988-000-000-001

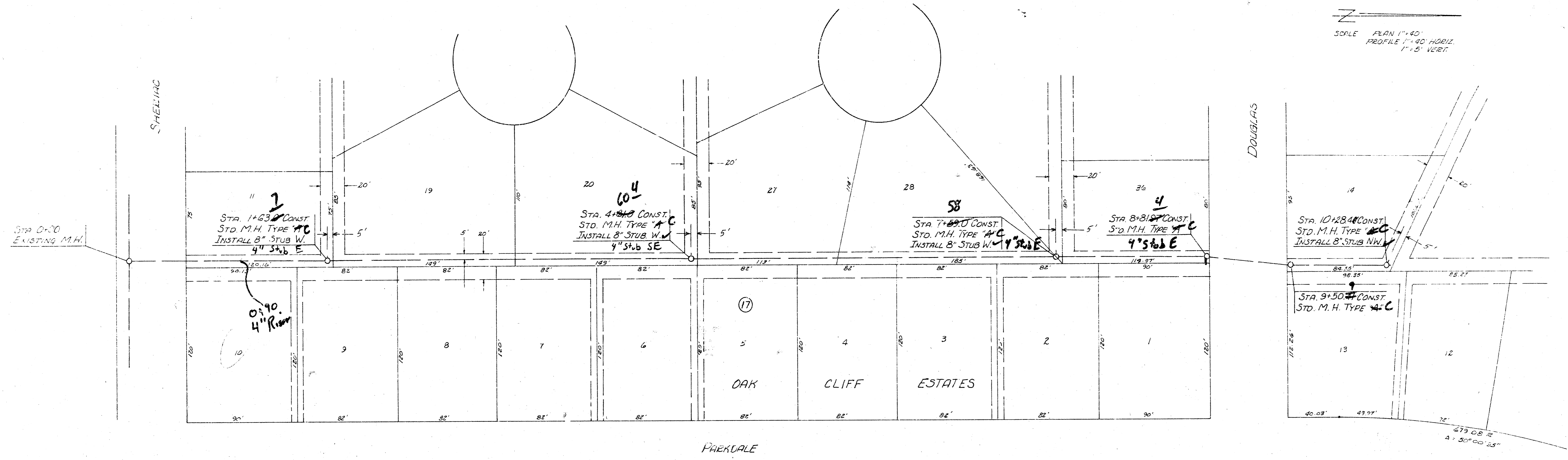
LINE 1	SHEET 2&3
LINE 2	SHEET 4&5
LINE 3	SHEET 6
LINE 3A	SHEET 7
LINE 4	SHEET 8

NOTE: RISERS SHALL BE INSTALLED ON THE EXISTING SEWER ALONG THE EAST SIDE OF LARK TO FACILITATE FUTURE HOUSE SEWER CONNECTIONS ON LOTS 5, 6 AND 7, IN BLOCK 20 AS A PART OF PROJECT. *OK*

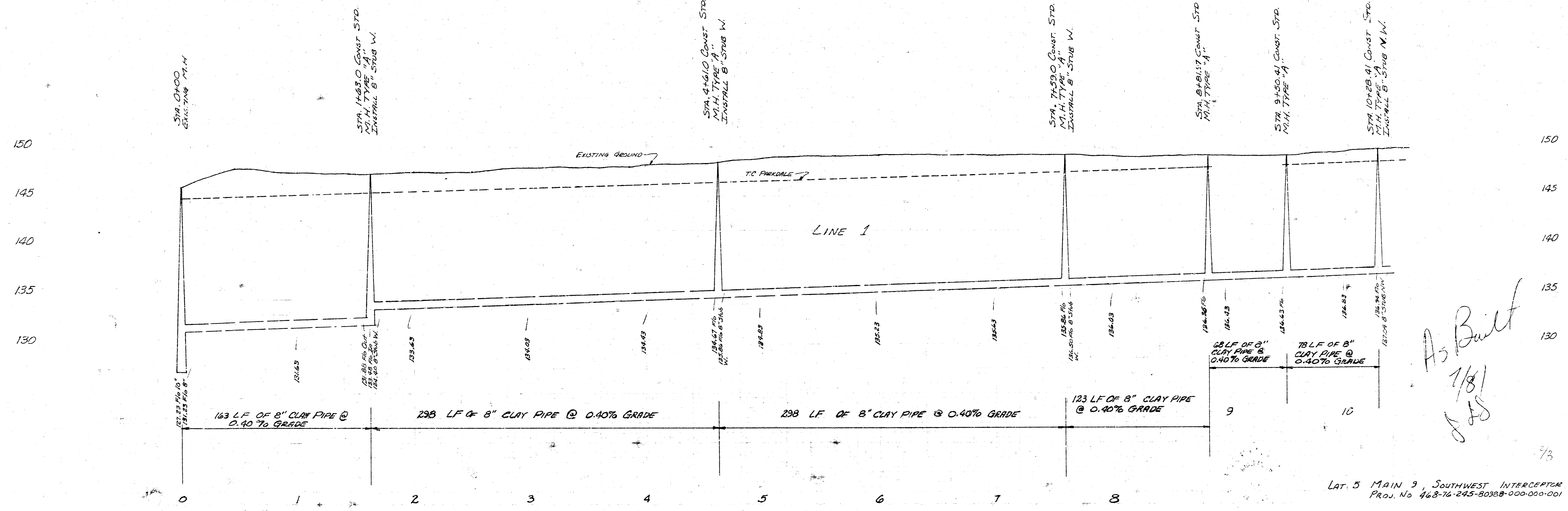
NOTE: PLAN INDICATES CLAY PIPE TO BE USED ON THIS PROJECT BUT A.B.S. COMPOSITE PIPE OR P.V.C. PIPE CAN BE USED AS AN ALTERNATE. TYPE "C" MANHOLES CAN ALSO BE USED AS AN ALTERNATE TO THE TYPE "A" MANHOLES SHOWN ON THE PLANS.

As Built
[Signature]
 1/8

SCALE PLAN 1"=40'
 PROFILE 1"=40' HORIZ.
 1"=5' VERT.



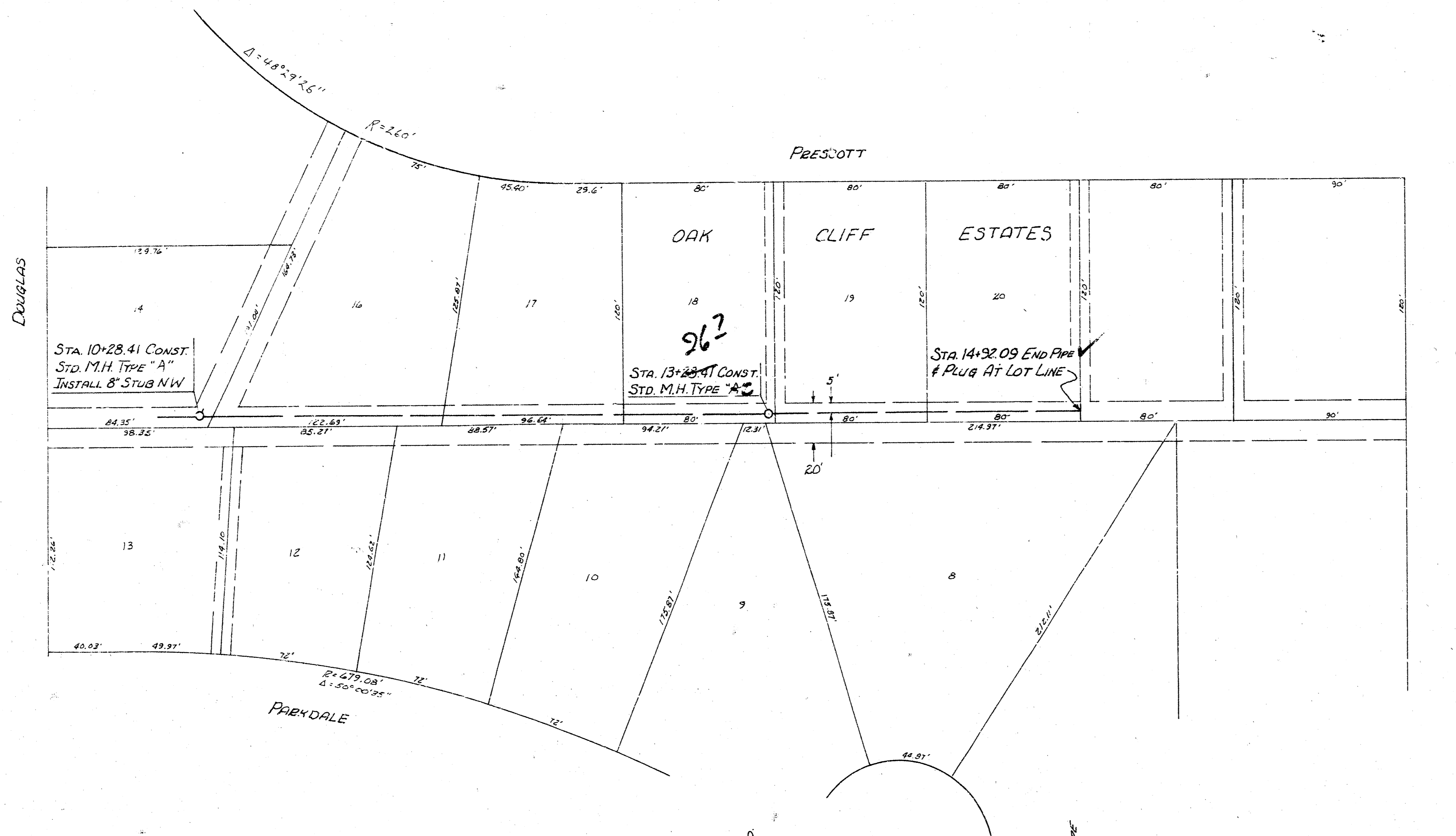
B.M. 133.20 City Std. 435°34'52.7 E. of
 & Maize Road & Maple St.
 B.M. 143.06 "a" Center Headwall S. side E.C.B.
 1/2 mile West of Maize Road & Maple.



As Built
 7/8/15
 J.S.

LAT. 5 MAIN 3, SOUTHWEST INTERCEPTOR
 Proj. No. 463-76-245-80388-000-000-001

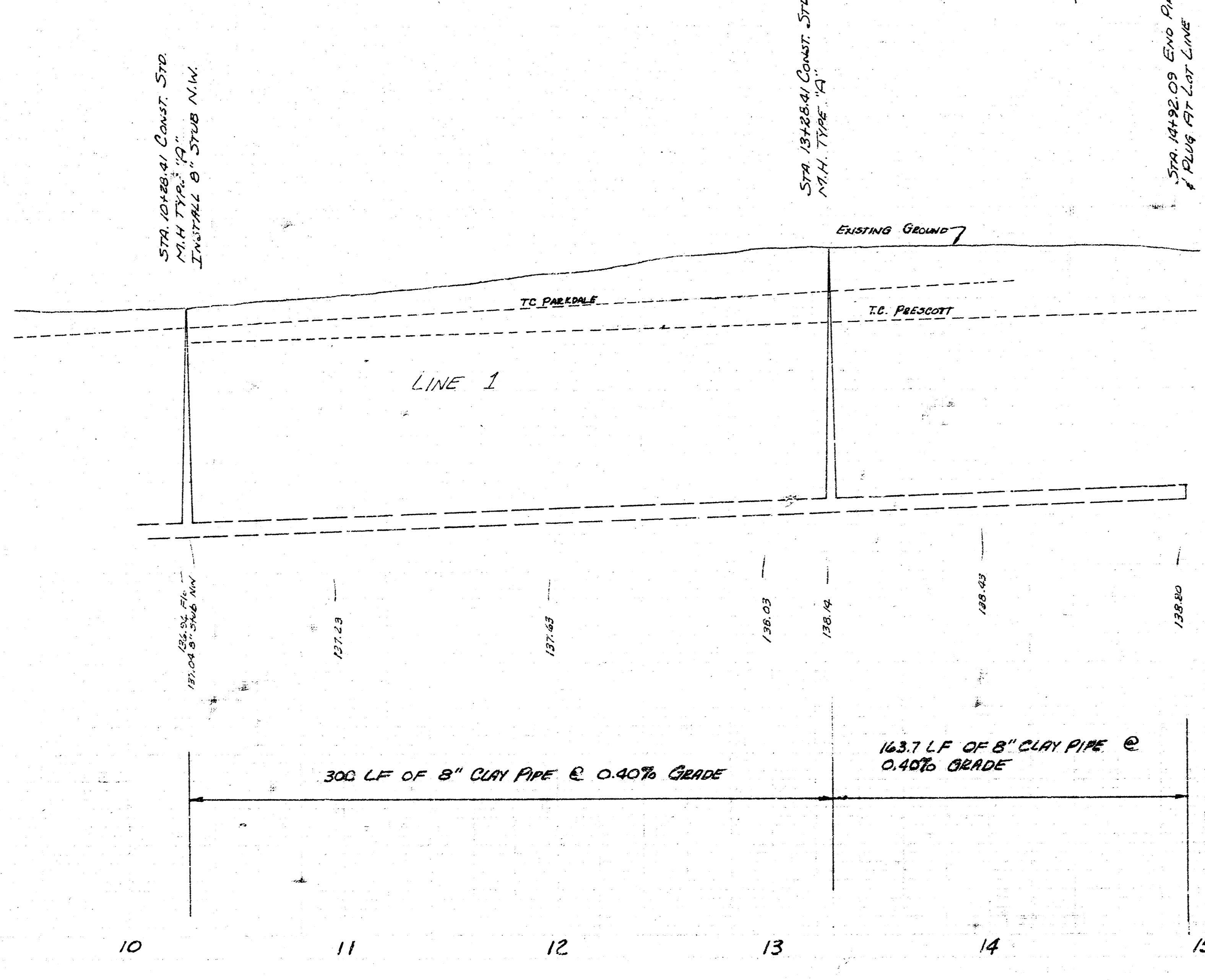
EXAMINED FROM THE REAR



SCALE PLAN 1"=40'
 PEOPLE 1"=40' HORIZ
 1"=5' VERT.

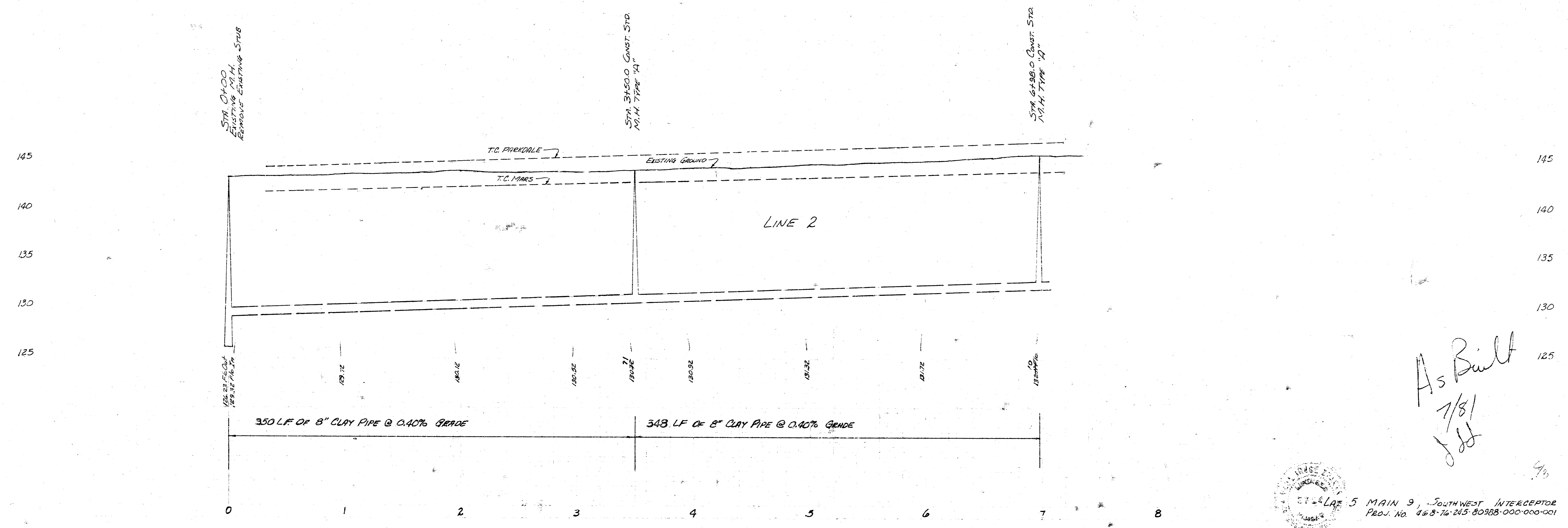
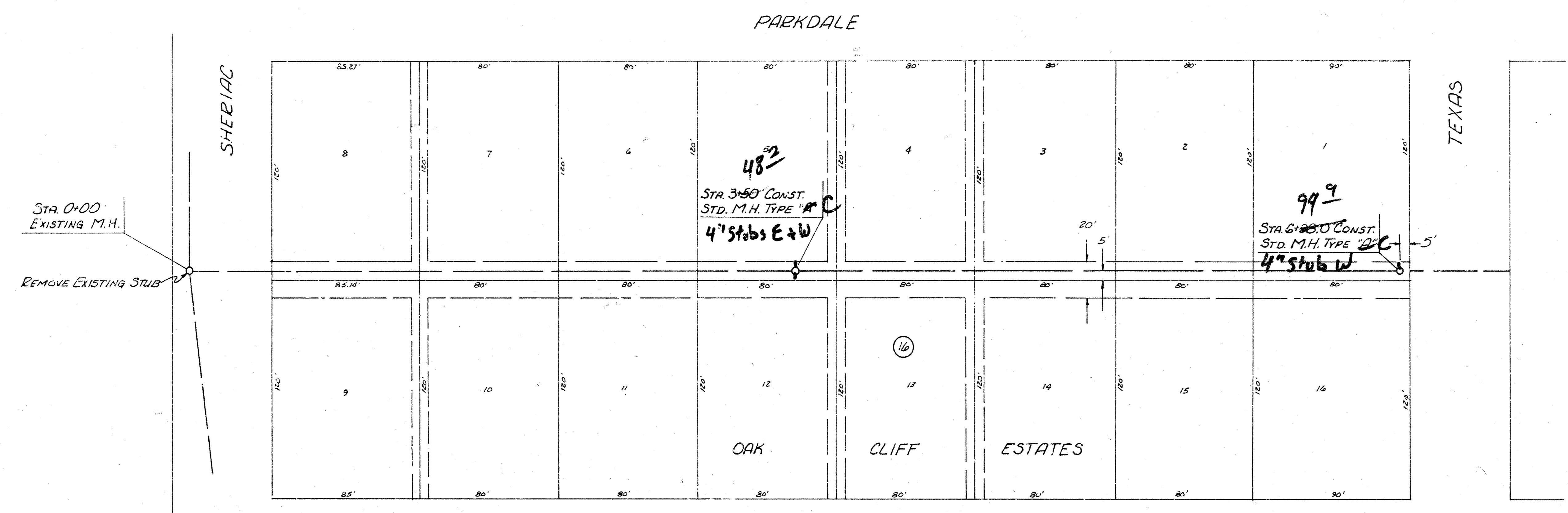
155
 150
 145
 140
 135
 130

155
 150
 145
 140
 135
 130



LAT 5 MAIN 9, SOUTHWEST INTERCEPTOR
 PROJ. NO. 468-76-245-80988-000-000-001

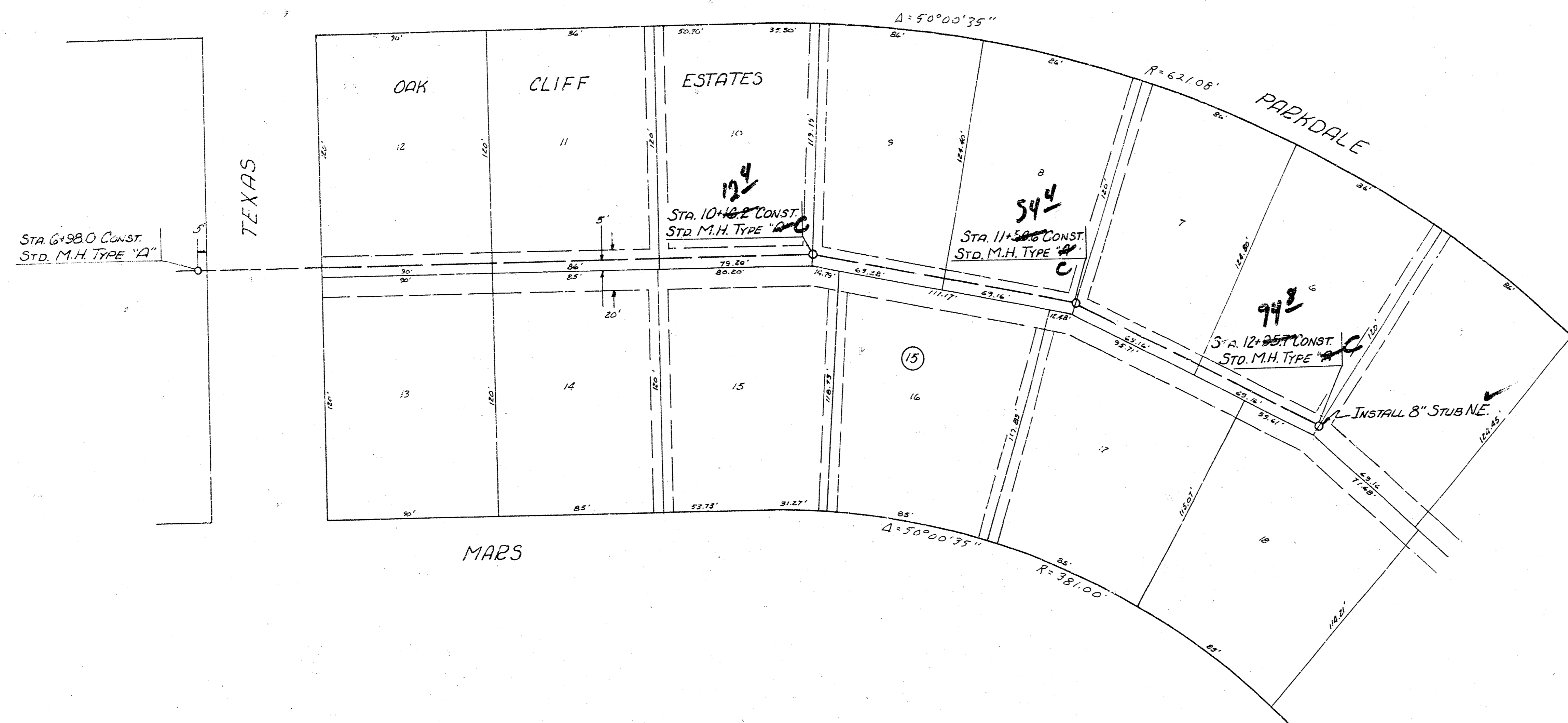
SCALE PLAN 1"=40'
 PROFILE 1"=40' HORIZ.
 1"=5' VERT.



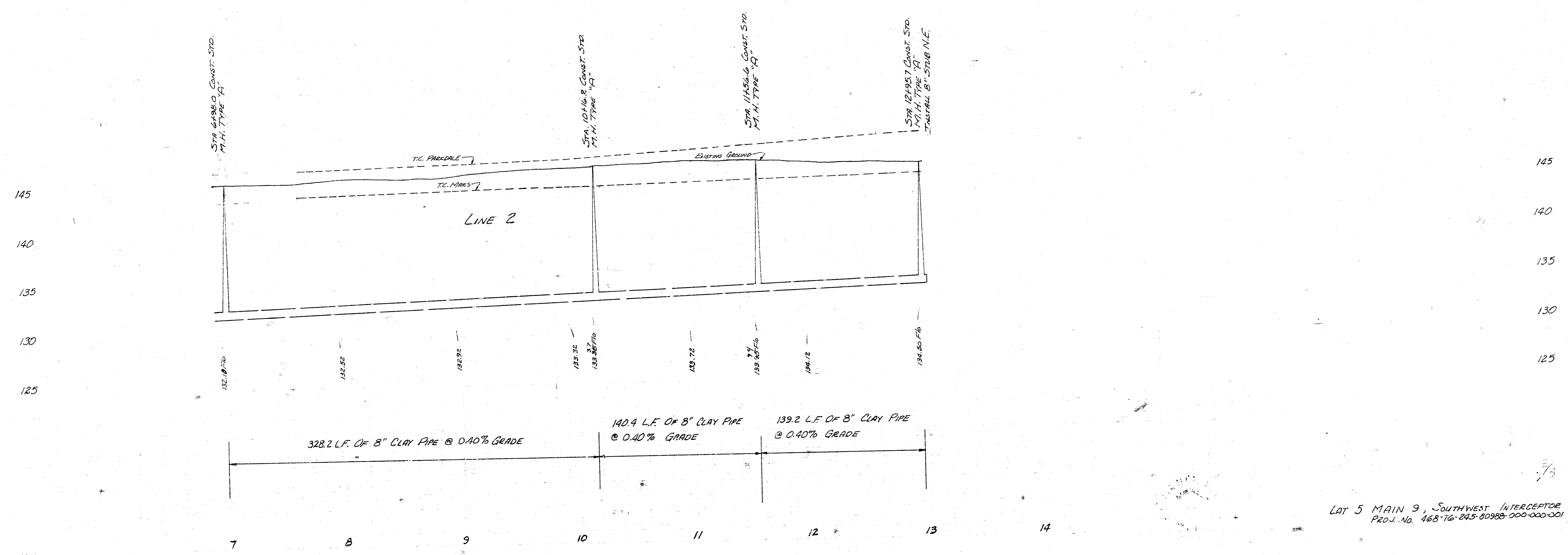
As Built
 7/8/1
 JST



LAZ 5 MAIN 9, SOUTHWEST INTERCEPTOR
 PROJ. NO. 468-76-245-80388-000-000-001



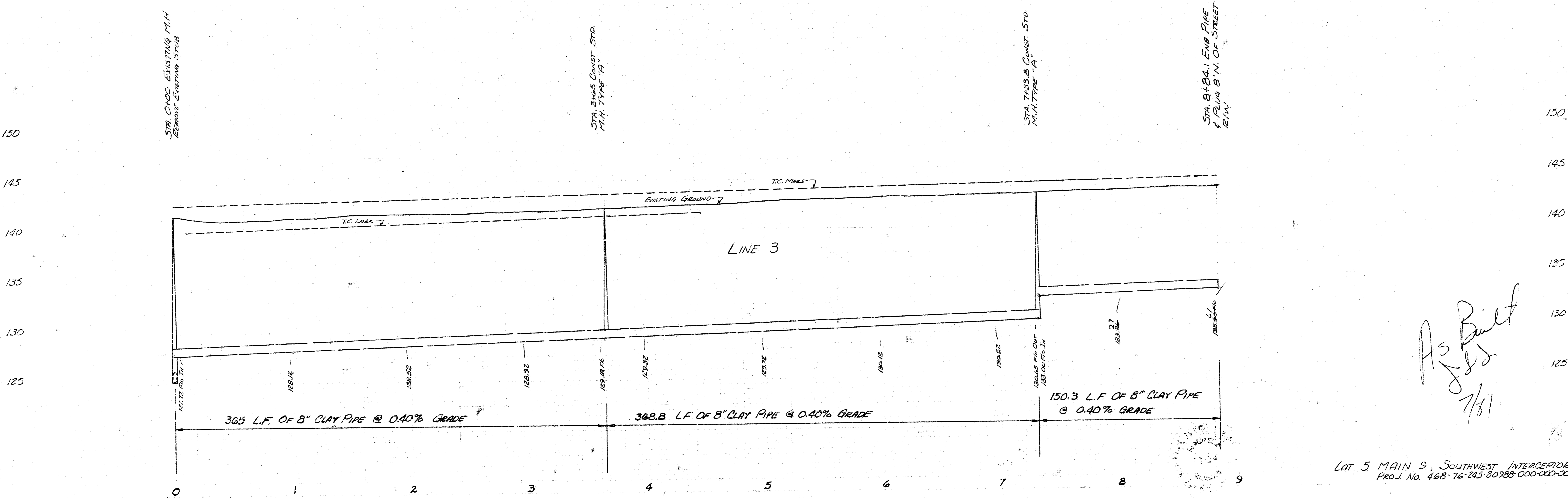
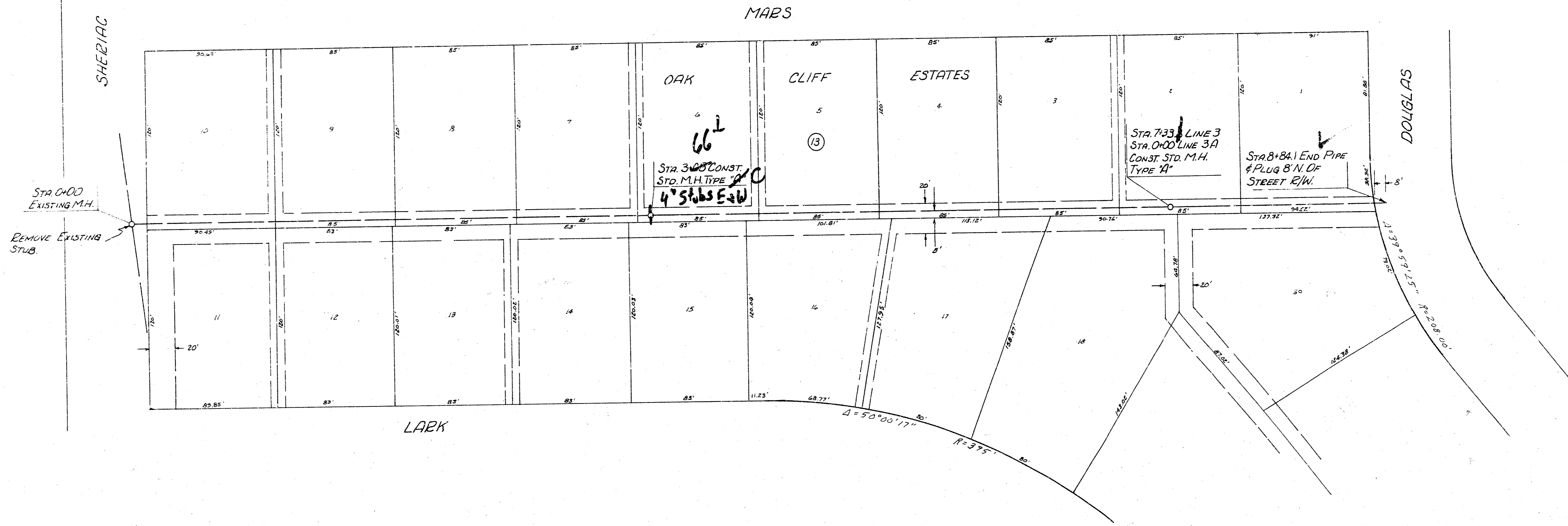
SCALE PLAN 1"=40'
 PROFILE 1"=5'



LAT 5 MAIN 9, SOUTHWEST INTERCEPTOR
 PROJ. No. 468-76-245-80988-000-000-001

FILMED FROM THE BEST

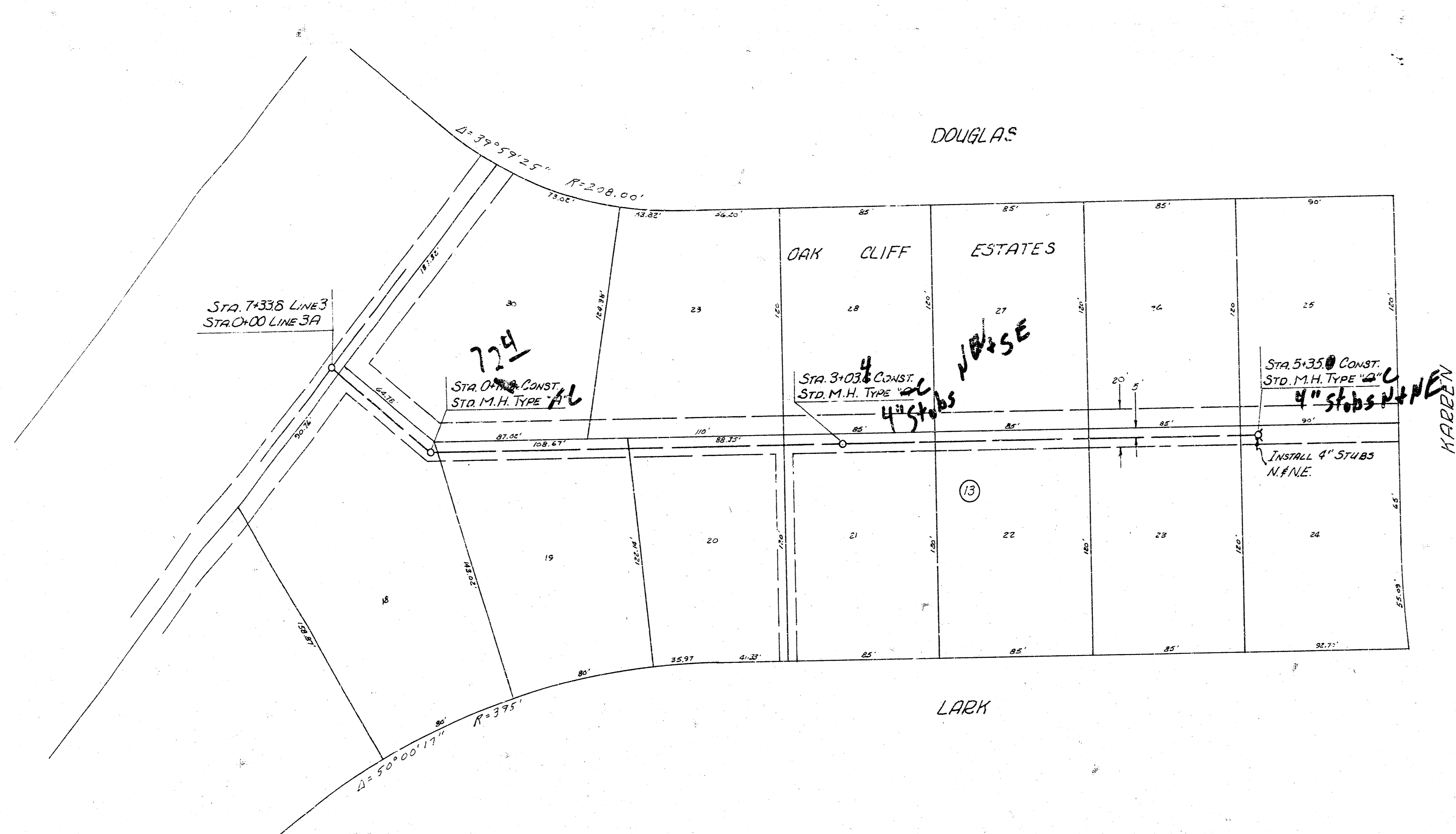
SCALE PLAN 1" = 40'
 PROFILE 1" = 20' HORIZ
 1" = 5' VERT.



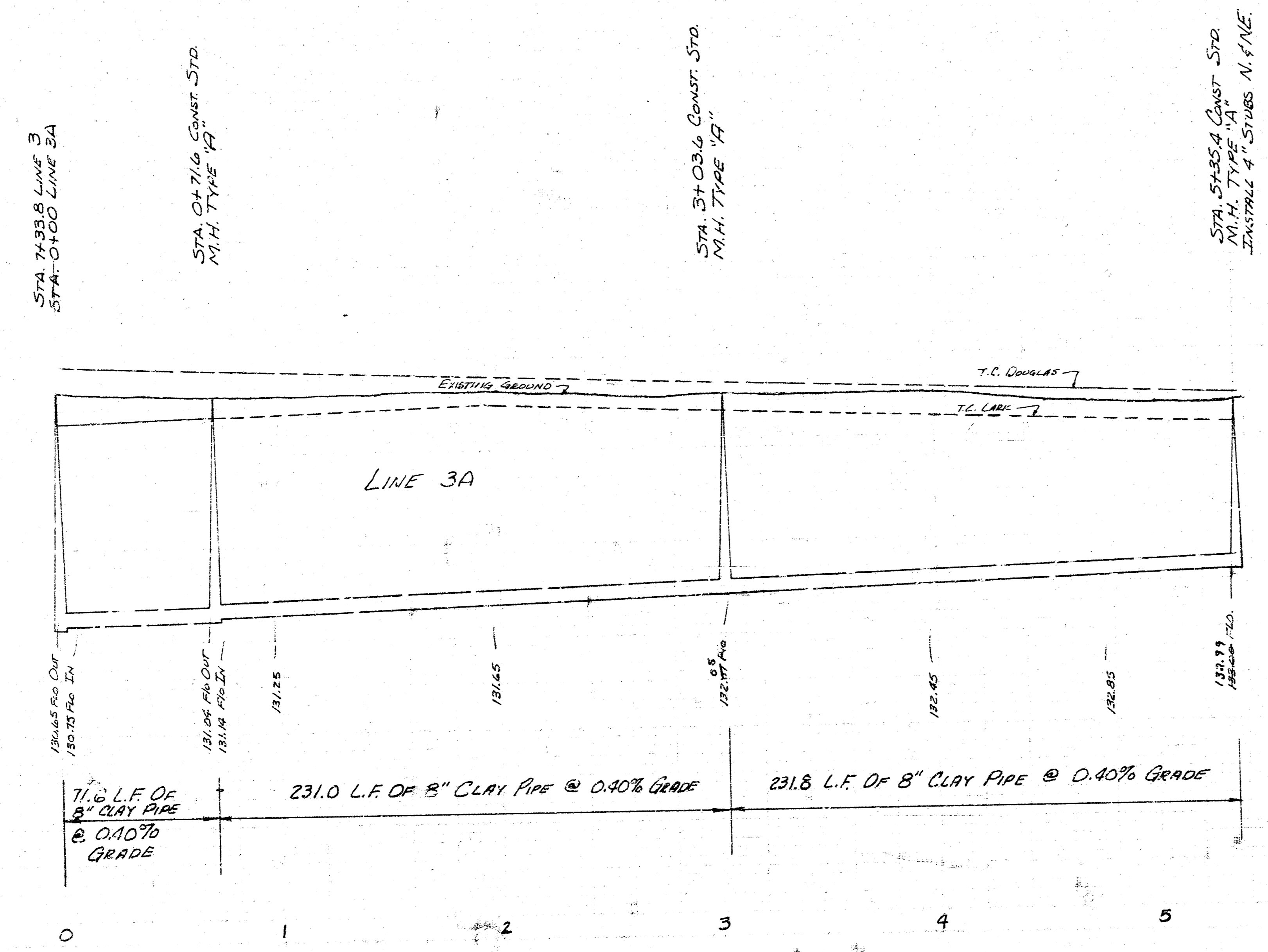
As Built
 7/81

LAT. 5 MAIN 9, SOUTHWEST INTERCEPTOR
 PROJ. No. 468-76-245-80988 000-000-001

FILMED FROM THE BEST

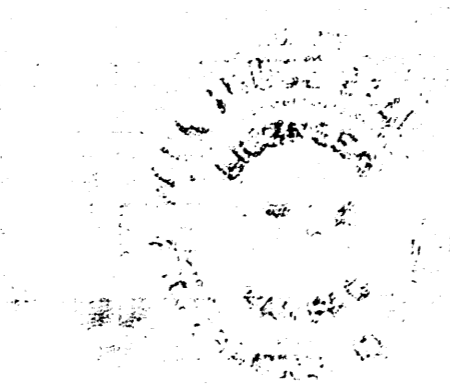


SCALE PLAN 1"=40'
 PROFILE 1"=40' VERT.
 1"=5' VERT.



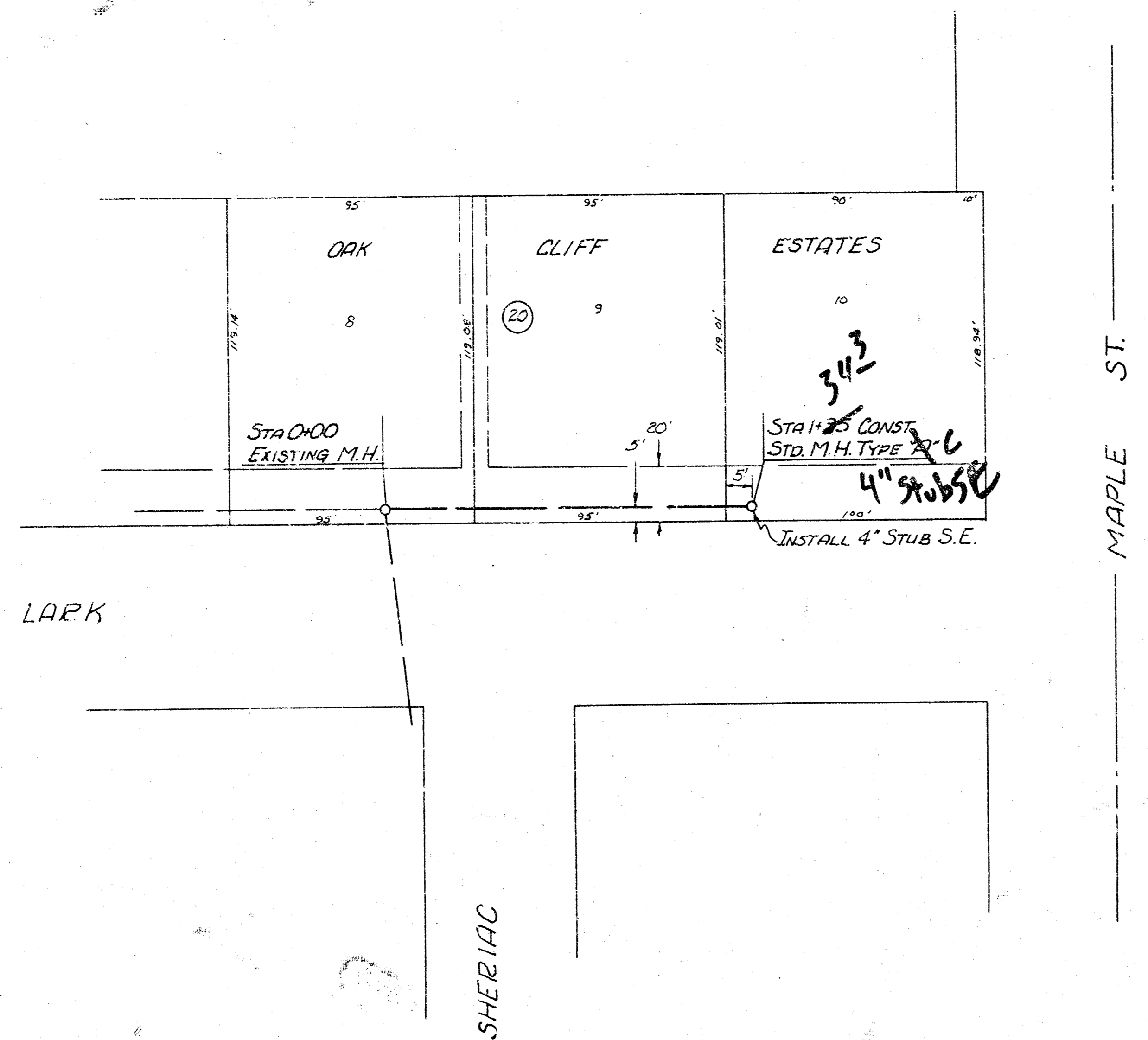
150
 145
 140
 135
 130

150
 145
 140
 135
 130



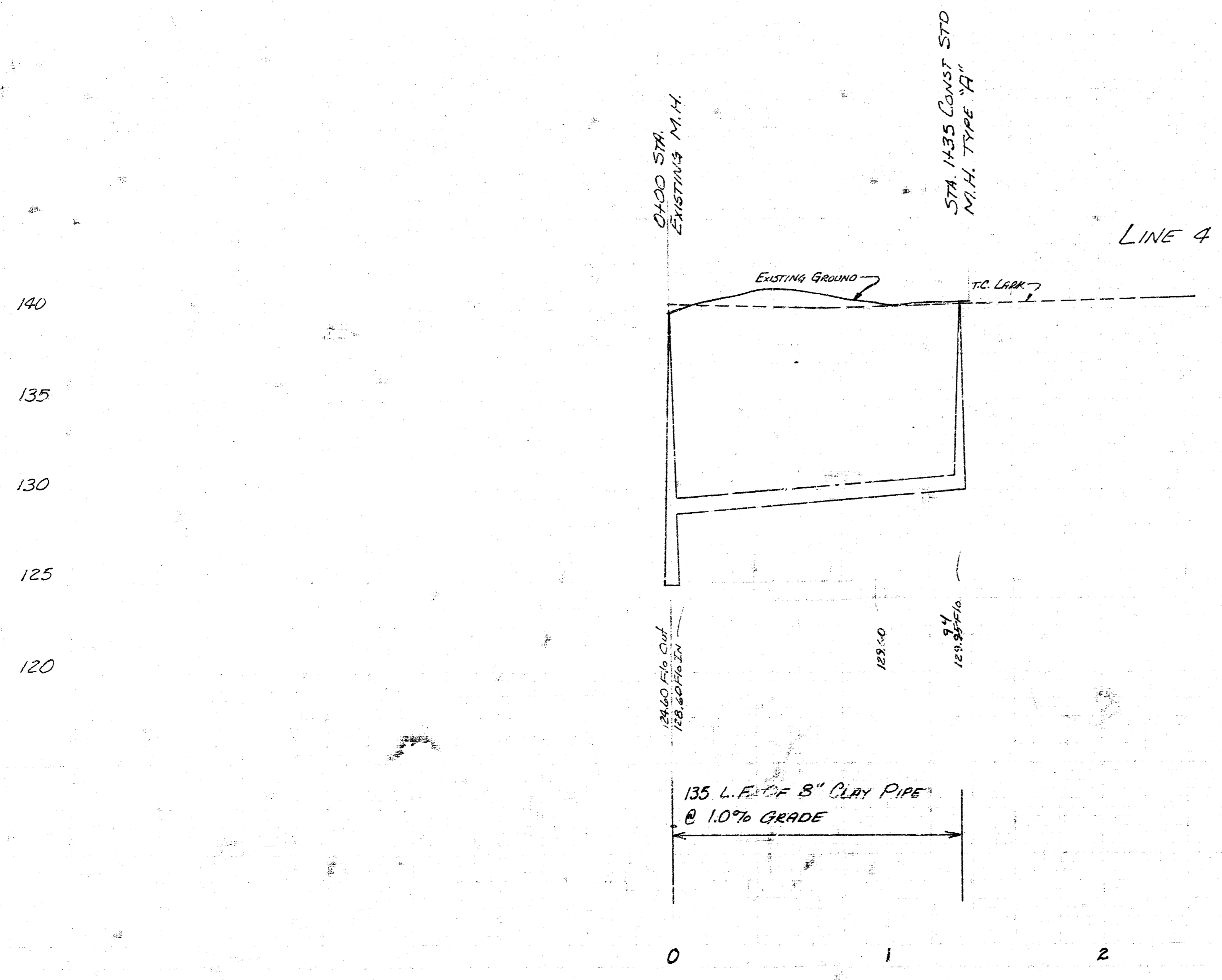
LAT 5 MAIN 9, SOUTHWEST INTERCEPTOR
 PROJ. No. 468-76-215-80988-000-000-001

FILMED FROM THE BEST



SCALE PLAN 1"=40'
 PROFILE 1"=40' HORIZ
 1"=5' VERT.

B.M. 133.20 City Std. 43.5' S + 52.7' E. of
 & Mariza Road & Maple St.
 B.M. 143.06 "d" center Handwall S. side P.C.B.
 1/2 mile West of Mariza Road & Maple.



As Built
 2/8/81
[Signature]

LAT 5 MAIN 9, SOUTHWEST INTERCEPTOR
 PROJ. No. 468-76-245-80968-000-000-001

FILMED FROM THE BEST