

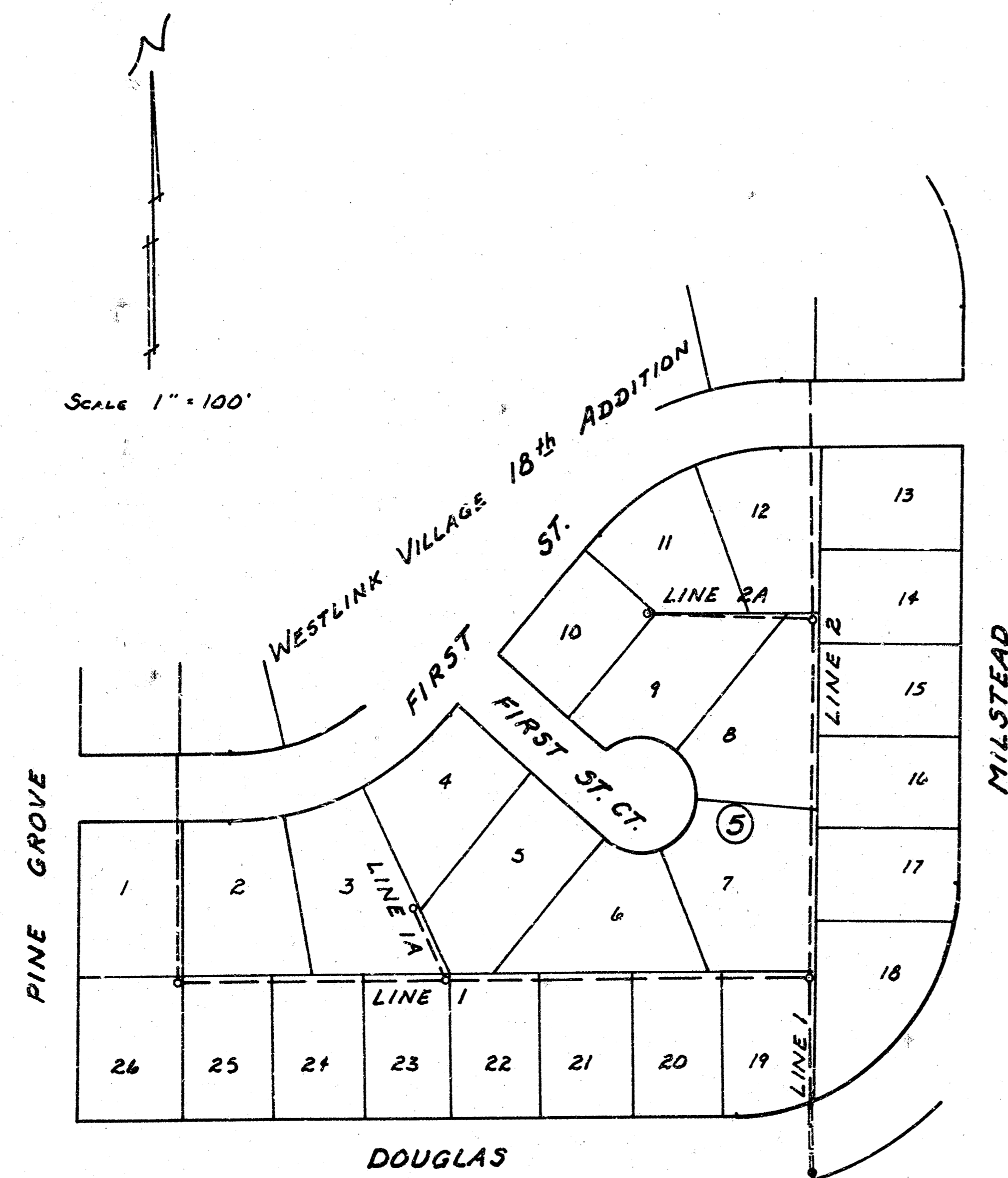
LAT 9 , MAIN 9, SW. INTERCEPTOR

CITY OF WICHITA

R.W. BRUGGEMAN

DIRECTOR OF ENGINEERING CITY ENGINEER

PROJ. NO. 468-76-245-81153-000-000-001

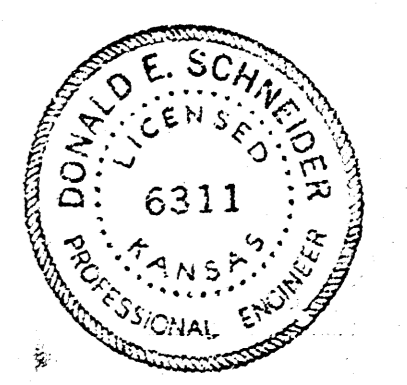


NOTE: RISER PIPE SHALL BE INSTALLED TO SERVE INDIVIDUAL LOTS OR TRACTS IN CONJUNCTION WITH NEW SANITARY SEWER CONSTRUCTION, UNLESS OTHERWISE ORDERED BY THE ENGINEER, BECAUSE OF GROUND WATER, UNSTABLE SOIL OR UNUSUALLY DEEP CONSTRUCTION. RISER LOCATIONS SHALL BE AS APPROVED BY THE PROPERTY OWNER WITH THE CONCURRENCE OF THE ENGINEER. INSTALLATION OF RISERS ON SEWERS BECAUSE OF UNUSUAL DEPTH WILL BE REQUIRED WHEN THE SEWER IS DEEPER THAN TWELVE FEET (12'). THE CONTRACTOR WILL BE REQUIRED TO FILE WRITTEN DOCUMENTATION WITH THE ENGINEER IN A FORM APPROVED BY THE ENGINEER INDICATING THE LOCATIONS WHERE RISERS ARE TO BE INSTALLED AS REQUESTED BY THE PROPERTY OWNER OR HIS AUTHORIZED REPRESENTATIVE. RISER PIPE CONSTRUCTION SHALL CONFORM TO THE REQUIREMENTS AS SHOWN ON THE STANDARD RISER DETAIL SHEET.

INDEX

LINE 1	SHEET 2
LINE 1A	SHEET 2
LINE 2	SHEET 3
LINE 2A	SHEET 3

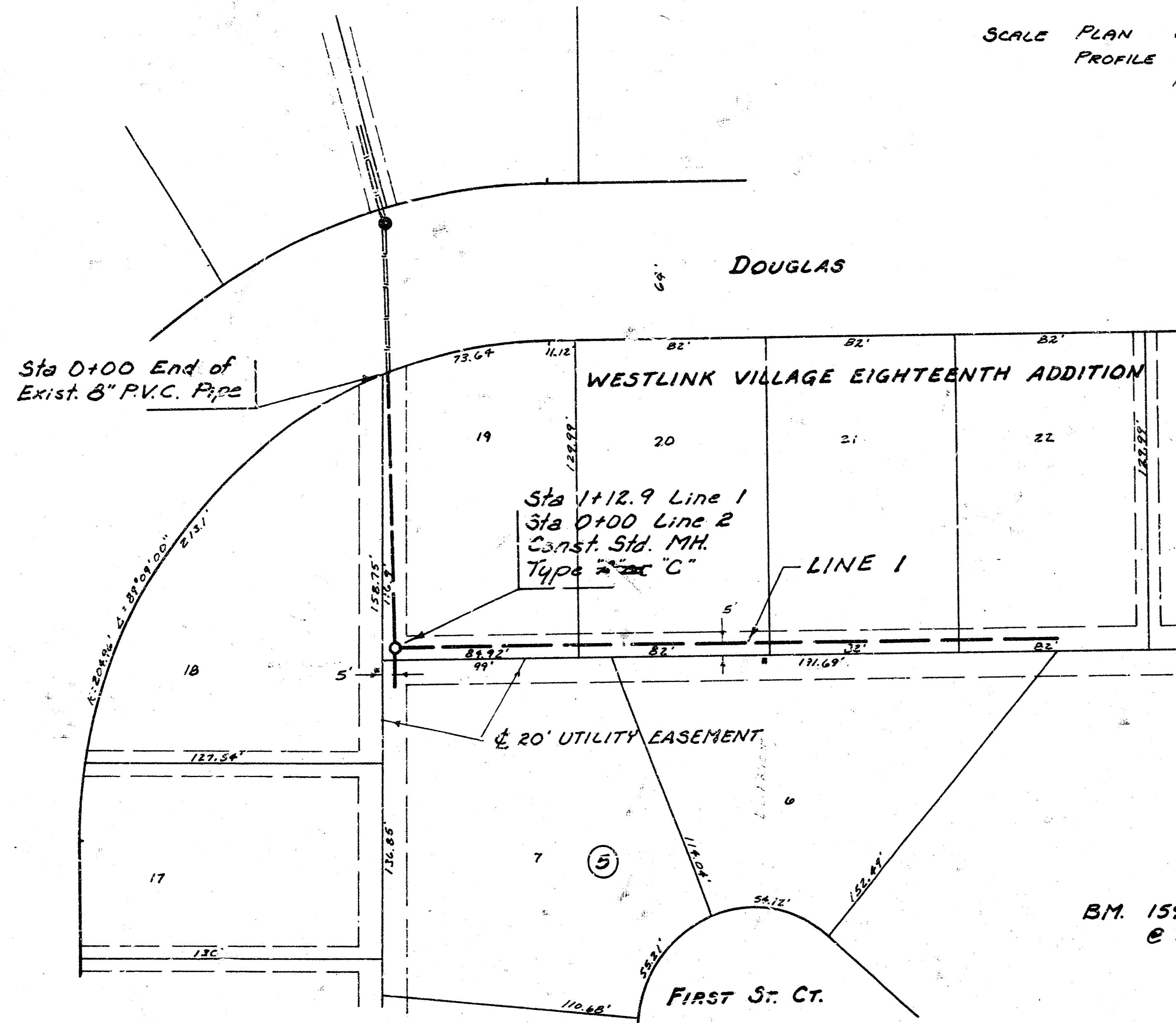
As Built
JLL
6-92



M. GREENS
R. LOOMIS

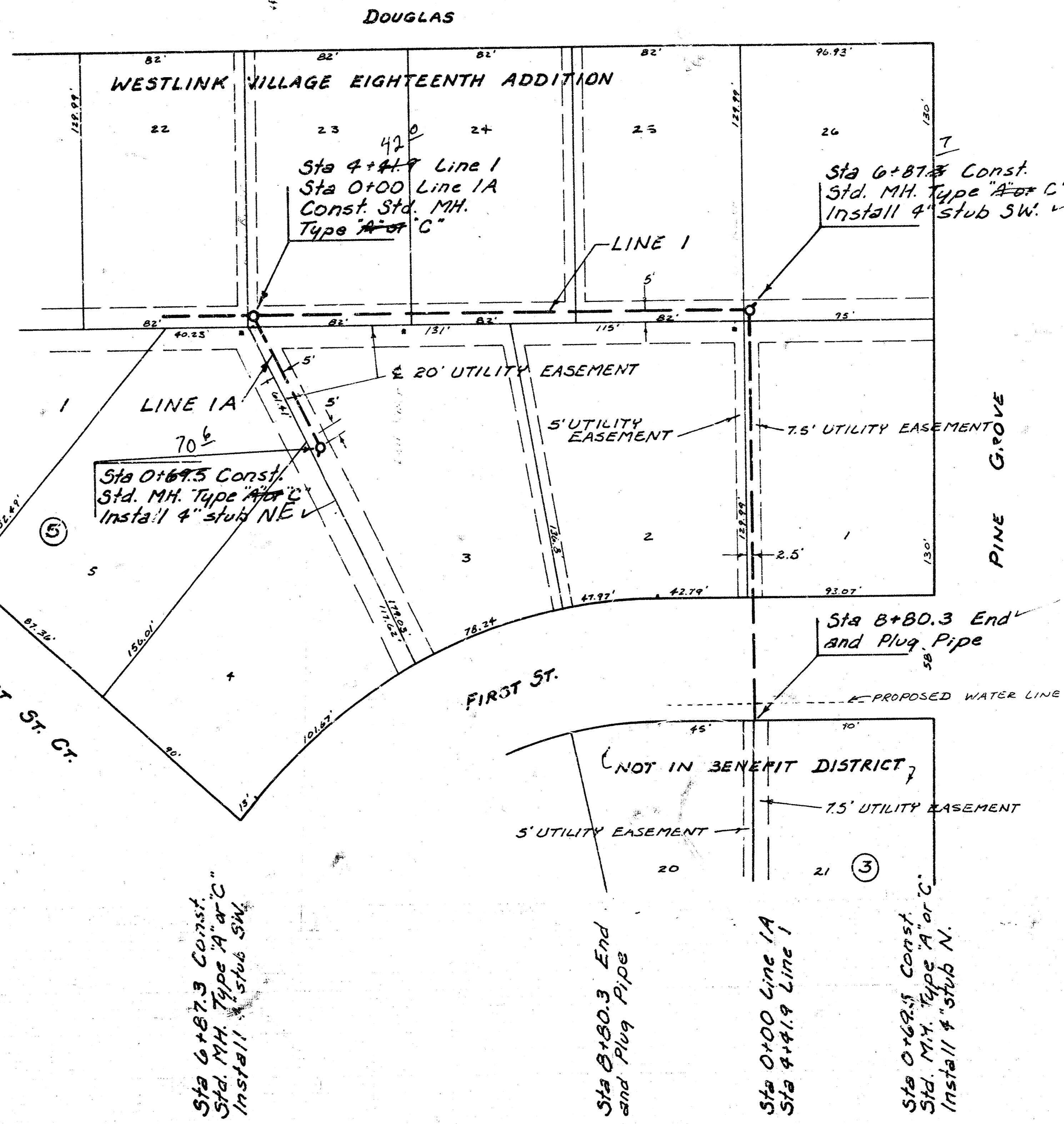
MG-13

SCALE PLAN 1" = 40'
PROFILE 1" = 40' HORIZ.
1" = 5' VERT.



THE CONTRACTOR SHALL BE RESPONSIBLE FOR PRESERVING PROPERTY IRONS. THE CONTRACTOR SHALL BE REQUIRED TO RE-ESTABLISH ANY PROPERTY IRONS WHICH ARE DAMAGED OR DESTROYED BY HIS CONSTRUCTION OPERATIONS. SUCH IRONS SHALL BE RE-ESTABLISHED BY A LICENSED LAND SURVEYOR OR A LICENSED PROFESSIONAL ENGINEER IN ACCORDANCE WITH STATE LAWS.

B.M. 159.35 SE. Corner Porch @ House @ 107 N 119th St. W.



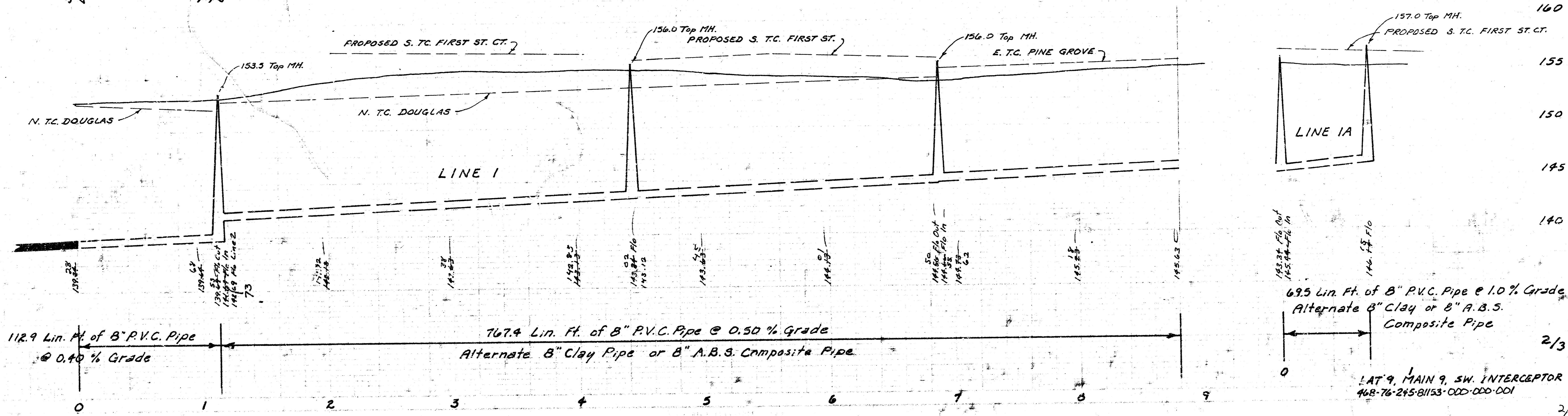
160

155

150

145

140



160

155

150

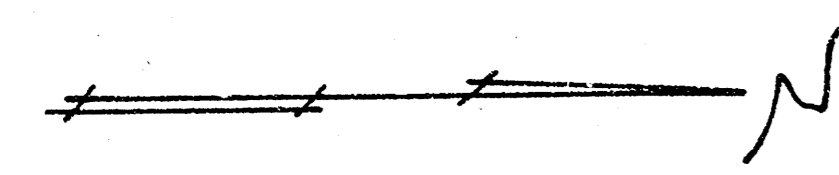
145

140

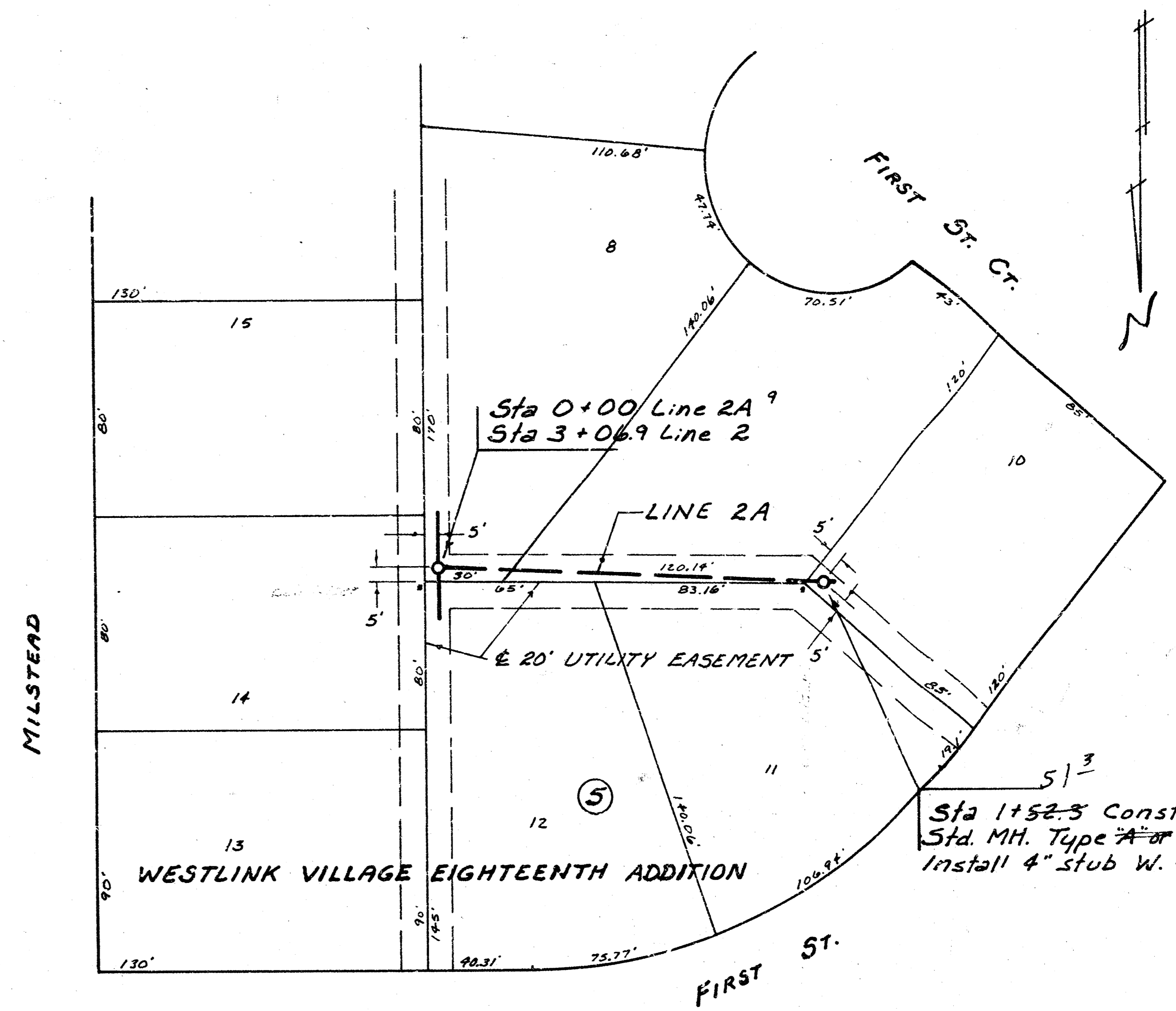
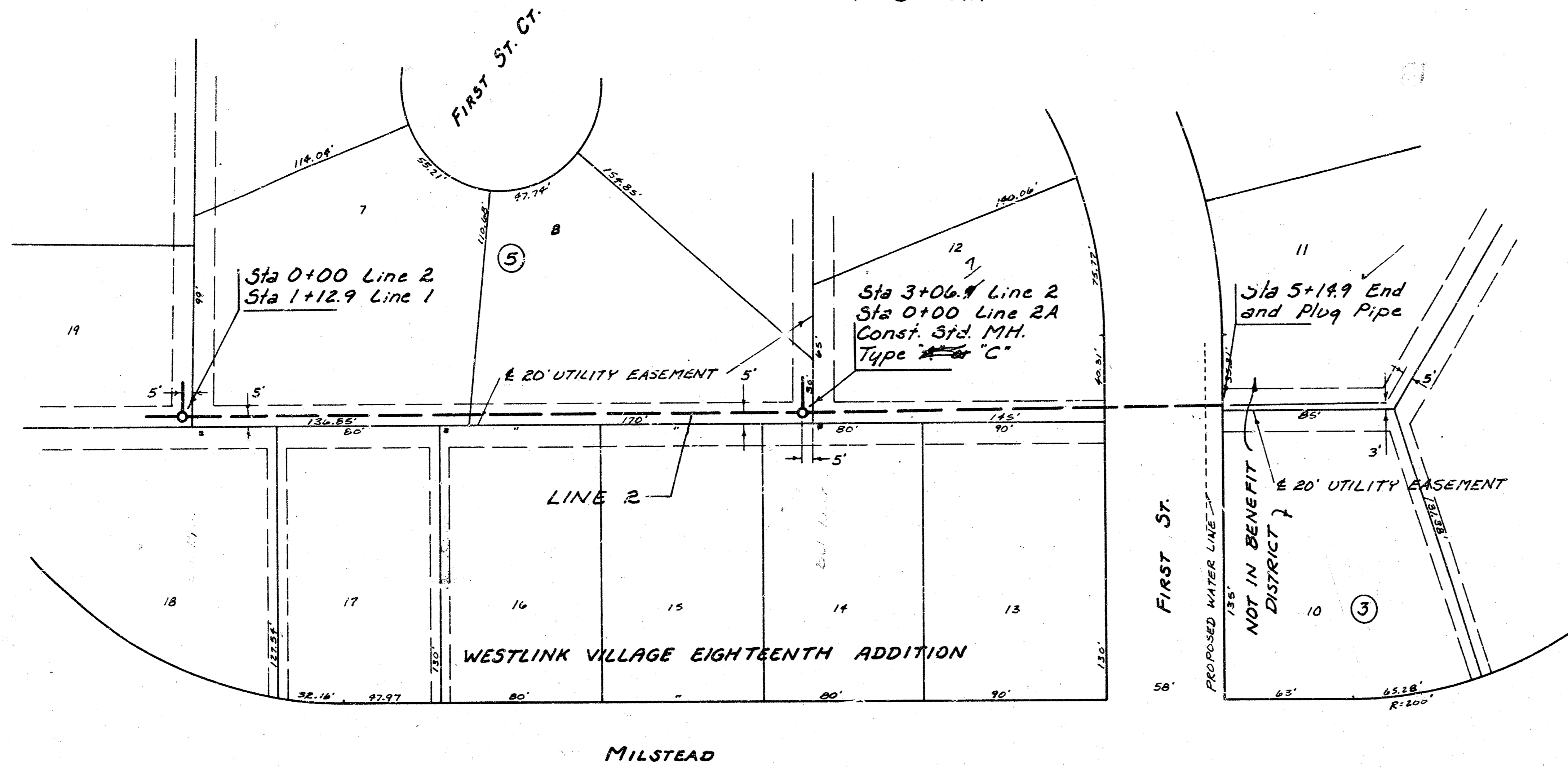
2/3

2/3

LAT 9 MAIN 9 SW INTERCEPTOR
468-76-245-81153-000-000-001



SCALE PLAN 1" = 40'
 PROFILE 1" = 40' HORIZ.
 1" = 5' VERT.



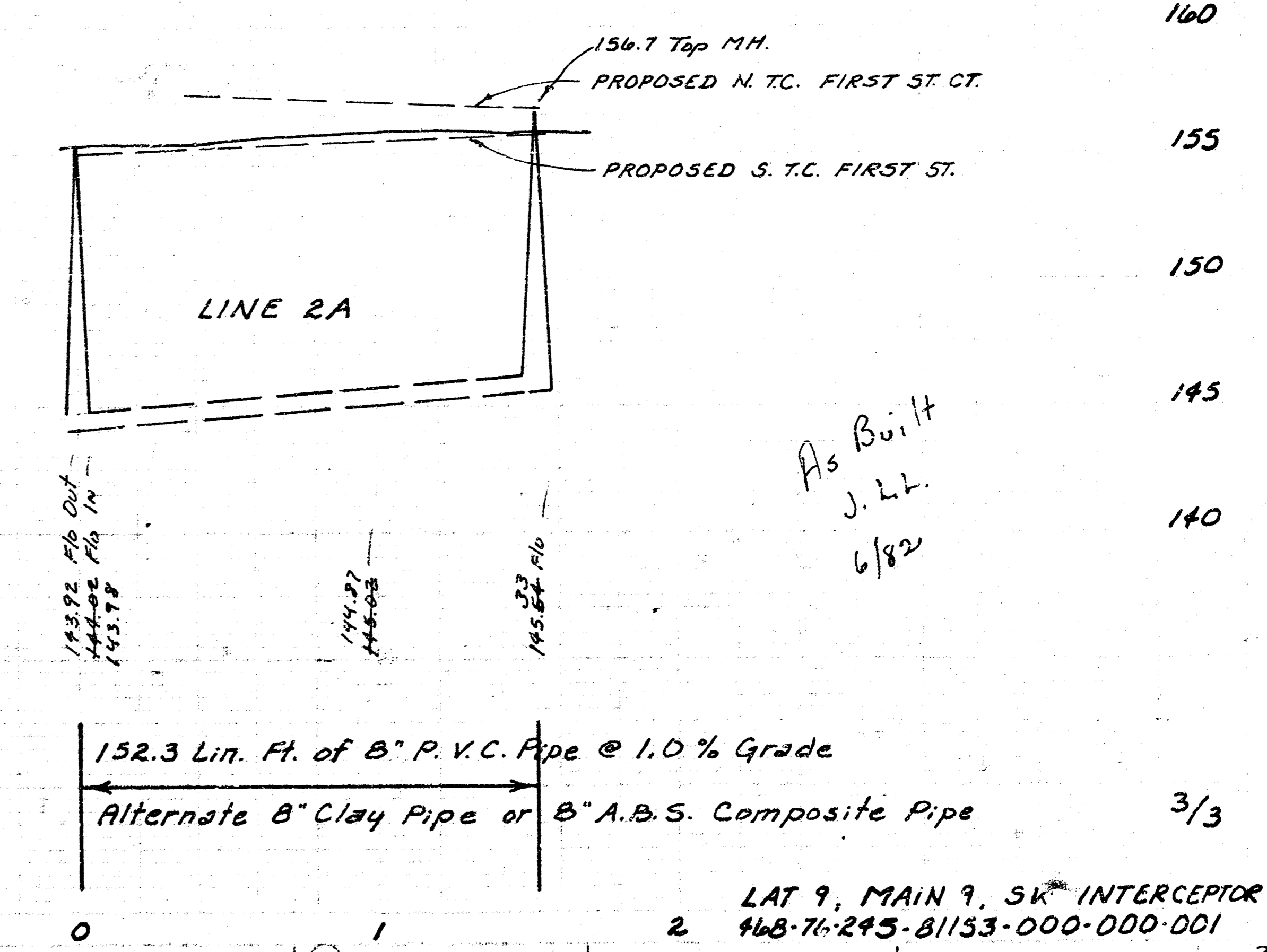
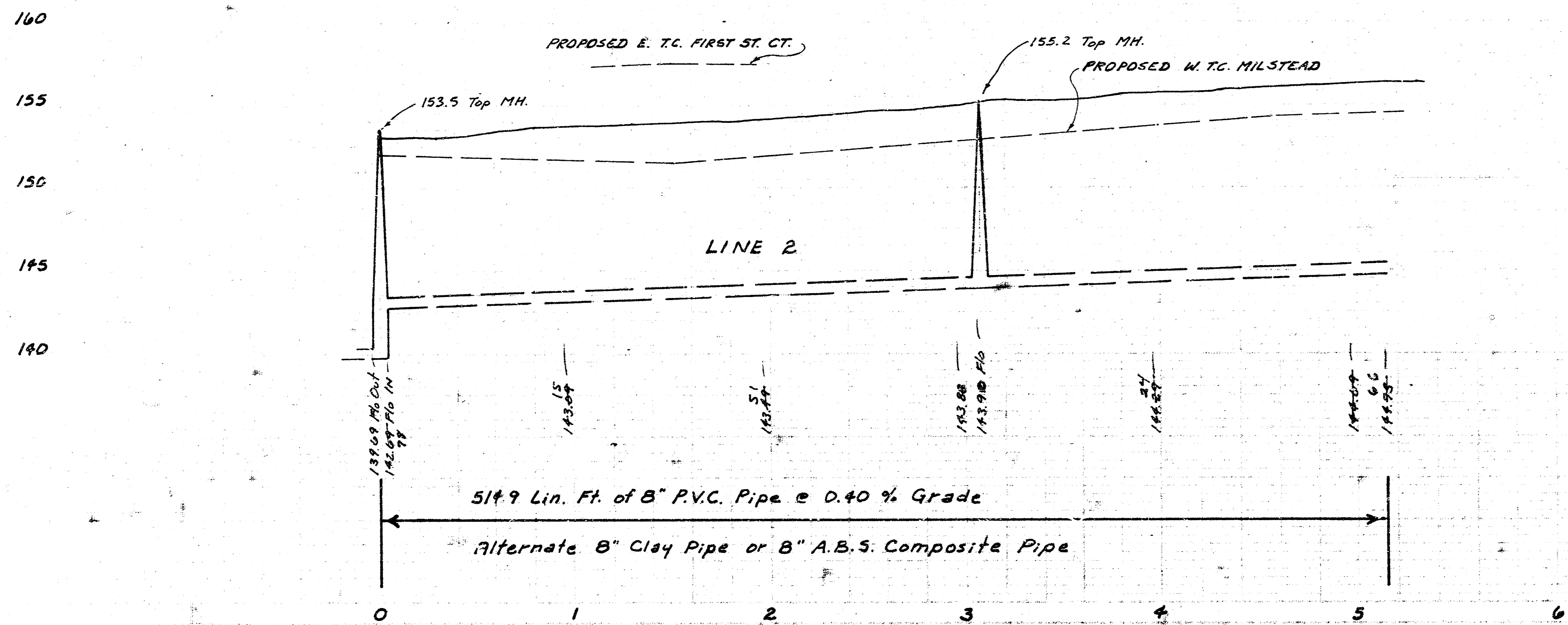
Sta 0+00 Line 2
 Sta 1+12.9 Line 1

Sta 3+06.9 Line 2
 Sta 0+00 Line 2A
 Const. Std. MH.
 Type "A" or "C"

Sta 5+14.9 End
 and Plug Pipe

Sta 0+00 Line 2A
 Sta 3+06.9 Line 2

Sta 1+52.3 Const.
 Std. MH. Type "A" or "C"
 Install 4" Stub W.



As Built
 J.L.L.
 6/82

LAT 9, MAIN 9, SK INTERCEPTOR
 468-76-243-81153-000-000-DD1