

LATERAL 10, MAIN 9 SOUTHWEST INTERCEPTOR SEWER

CITY OF WICHITA, KANSAS

M.E. LINDEBAK CITY ENGINEER

PROJECT NO. 468-76-245-81463-000-000-001

*As Built
9-85
J.F.L.*

INDEX OF SHEETS

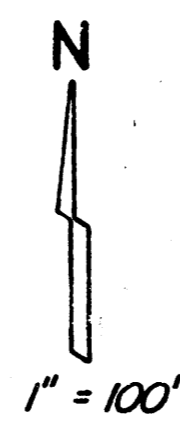
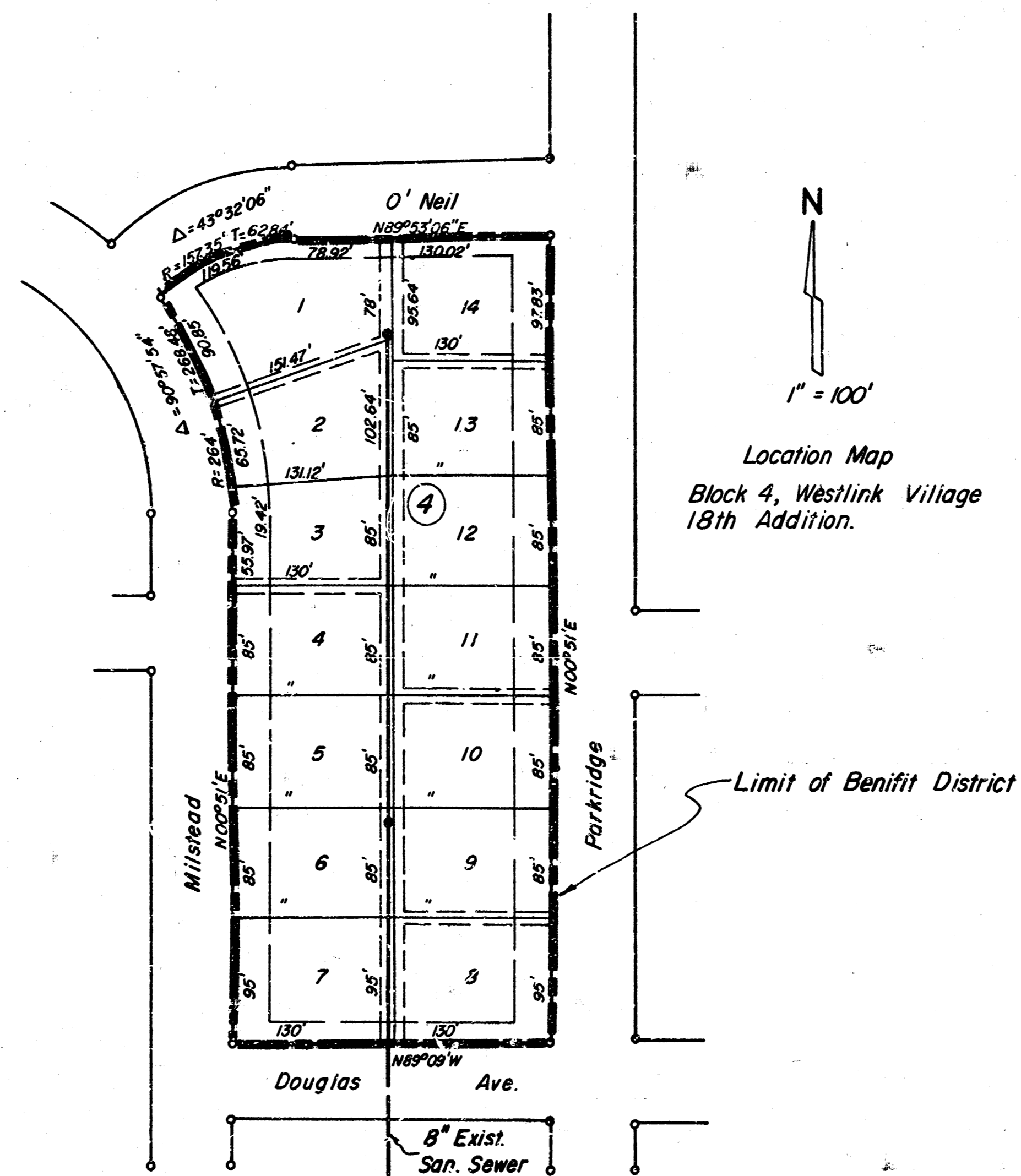
SHEET NO.	DESCRIPTION
1	TITLE SHEET
2-3	PLAN & PROFILES
4-6	STANDARDS

NOTIFY THE FOLLOWING COMPANIES
PRIOR TO ANY TRENCHING.

ARKLA GAS CO.	942-8350
BELL TELEPHONE	268-3087
CABLEVISION	266-6817
GAS SERVICE CO.	263-7511
KANSAS GAS & ELEC.	261-6248
KANSAS ONE-CALL	1-800-DIG-SAFE
CALL BEFORE YOU DIG	1-800-571-2115

THE CONTRACTOR SHALL BE RESPONSIBLE FOR PRESERVING PROPERTY RIGHTS. THE CONTRACTOR SHALL BE REQUIRED TO ESTABLISH ANY PROPERTY IRONS WHICH ARE DAMAGED OR DESTROYED BY HIS CONSTRUCTION OPERATIONS. SUCH IRONS SHALL BE RE-ESTABLISHED BY A LICENSED LAND SURVEYOR OR A LICENSED PROFESSIONAL ENGINEER IN ACCORDANCE WITH STATE LAWS.

DATE: JUNE 1985



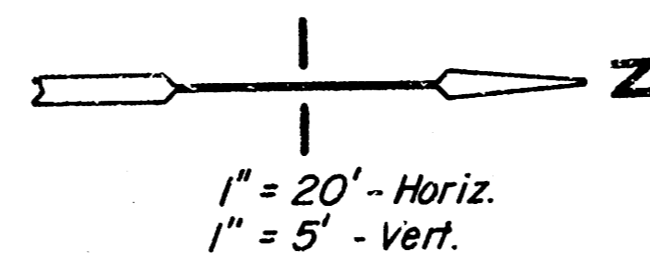
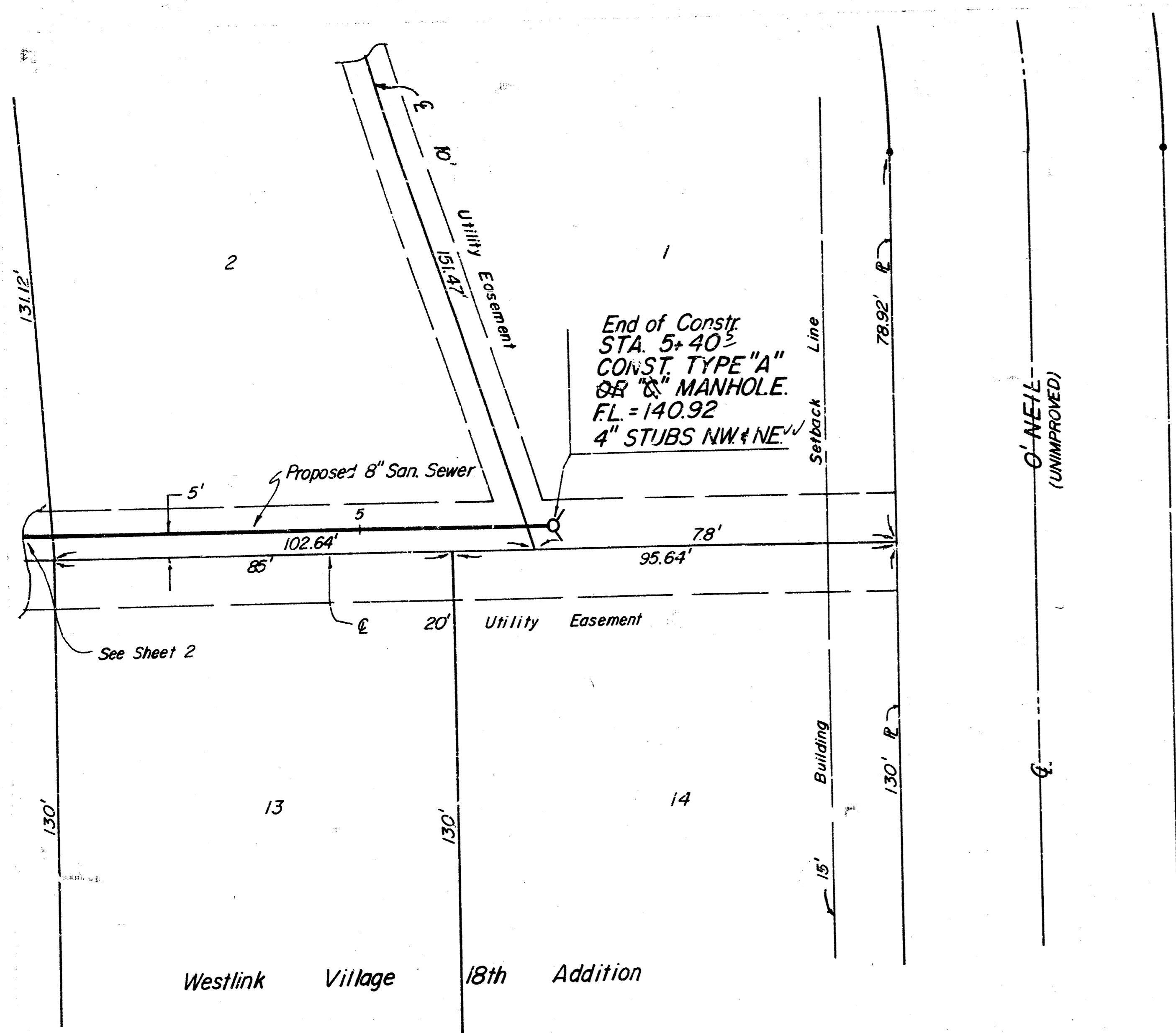
Location Map
Block 4, Westlink Village
15th Addition.

Limit of Benefit District

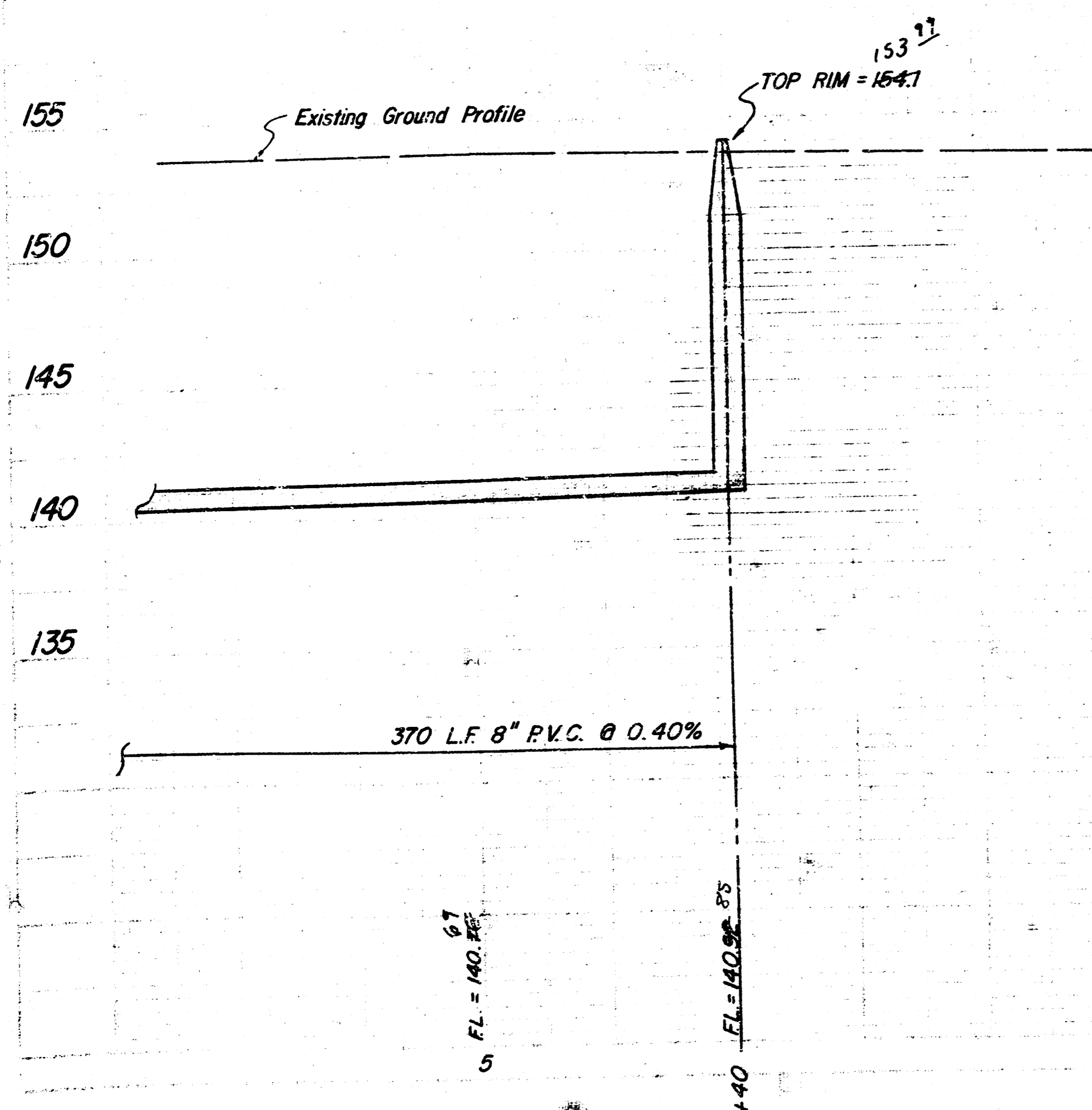
MOHRING & ASSOCIATES
CONSULTING ENGINEERS
WICHITA



FILMED FROM THE BEST
AVAILABLE COPY



*As Bui. 1x
9-85
JLF*



Lateral 10, Main 9, Southwest
Interceptor Sewer serving Lots
1 through 14, Block 4, Westlink
Village 18th Addition, to Wichita,
Sedgwick County, Kansas.

City Project No. 468-76-245-81463-000-000-001
MOEHRING & ASSOCIATES
CONSULTING ENGINEERS
WICHITA

85-058-P

1985
Sheet 3/3

14 5 1 2

FILMED FROM THE BEST
AVAILABLE COPY.....

