

**SANITARY SEWER IMPROVEMENTS  
WESTLINK 18TH ADDITION  
LATERAL 11, MAIN 9, SOUTHWEST INTERCEPTOR SEWER**

**GENERAL NOTES:**

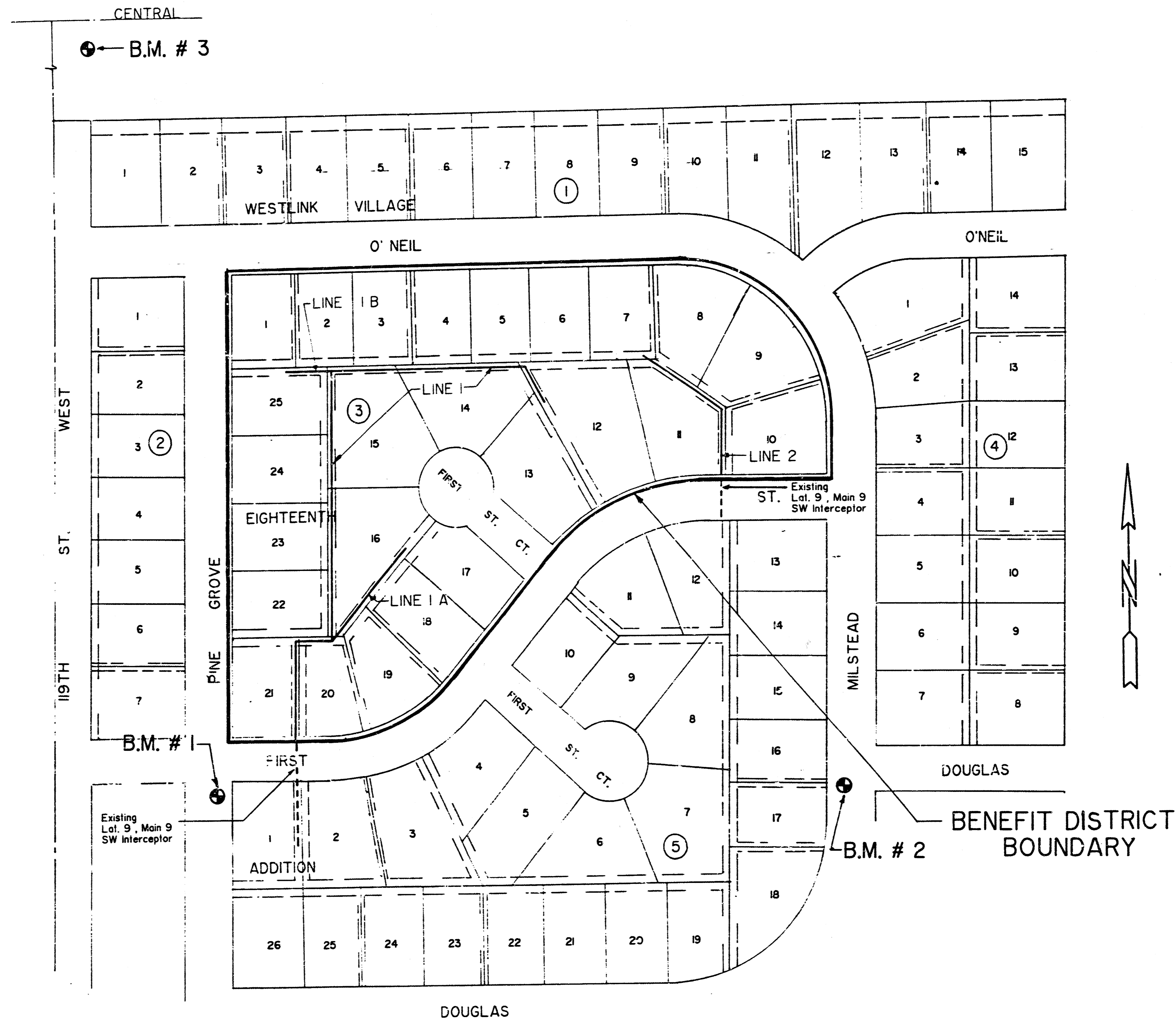
- EXISTING UTILITIES AND THEIR LOCATIONS, AS SHOWN ON THE PLANS, REPRESENT THE BEST INFORMATION OBTAINABLE FOR DESIGN. LOCATION INFORMATION HAS BEEN OBTAINED FROM THE VARIOUS UTILITY COMPANIES AND IS EITHER FROM COMPANY RECORD DRAWINGS OR COMPANY PROVIDED FIELD LOCATIONS. THE PLAN LOCATIONS SHOWN ARE NOT GUARANTEED. ADDITIONAL EXISTING UTILITIES MAY ALSO BE ENCOUNTERED. THE CONTRACTOR WILL BE REQUIRED TO WORK AROUND EXISTING UTILITIES WITHIN THE RIGHT-OF-WAY WHICH DO NOT CONFLICT WITH PROPOSED CONSTRUCTION.
- THE CONTRACTOR SHALL BE RESPONSIBLE FOR PRESERVING PROPERTY IRONS. THE CONTRACTOR WILL BE REQUIRED TO RE-ESTABLISH ANY PROPERTY IRONS WHICH ARE DAMAGED OR DESTROYED BY HIS CONSTRUCTION OPERATIONS. SUCH IRONS SHALL BE RE-ESTABLISHED BY A LICENSED LAND SURVEYOR OR A LICENSED PROFESSIONAL ENGINEER IN ACCORDANCE WITH STATE LAW.
- RUBBLE FROM THE REMOVAL OF MISCELLANEOUS STRUCTURES AND EXCESS EXCAVATION WHICH IS TO BE WASTED SHALL BE DISPOSED OF ON SITES TO BE PROVIDED BY THE CONTRACTOR. THESE SITES SHALL BE APPROVED BY THE ENGINEER AS TO SUITABILITY, APPEARANCE AND SITE LOCATION. LOCATIONS THAT, IN THE OPINION OF THE ENGINEER, WILL LEAVE AN UNSIGHTLY APPEARANCE WILL NOT BE APPROVED.

**BENCH MARKS:**

BM.# 1 "d" Cut on top curb 18.0' E. and 35.0' S. of  $\angle$ s First and Pine Grove Elev. 155.75

BM.# 2 "d" Cut on top curb 4.0' S. and 18.0' W. of  $\angle$ s Douglas and Milstead Elev. 151.64

BM.# 3 City of Wichita disk 40.0' E. and 46.0' S. of  $\angle$ s Central and 19th. W. Elev. 156.33



LOCATION MAP  
scale: 1"=100'

MICHAEL E. LINDEBAK, P.E., CITY ENGINEER

**CITY OF WICHITA, KANSAS**

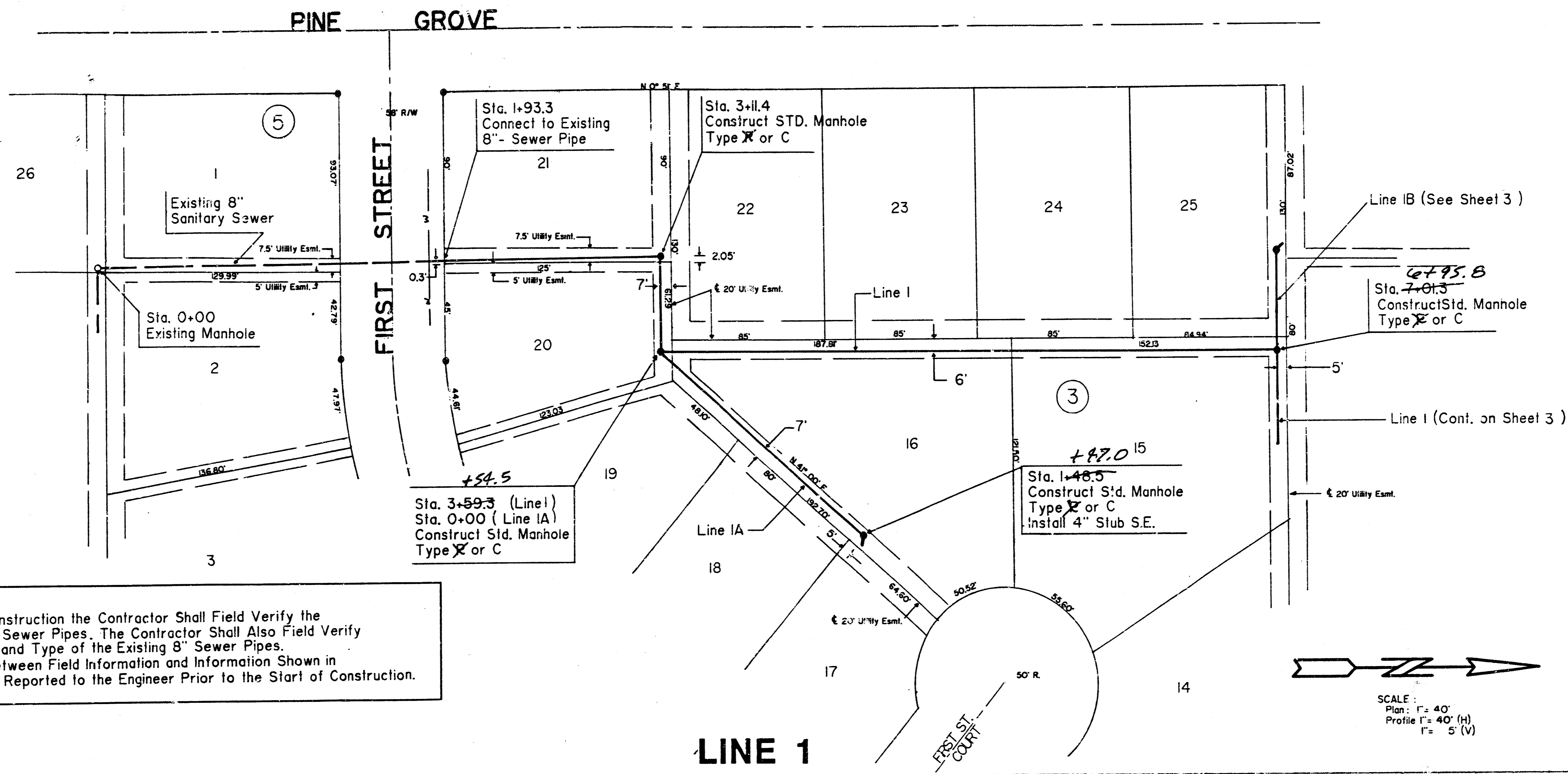
**PROJECT NO.: 468-76-245-81633-000-000-001**

**INDEX:**

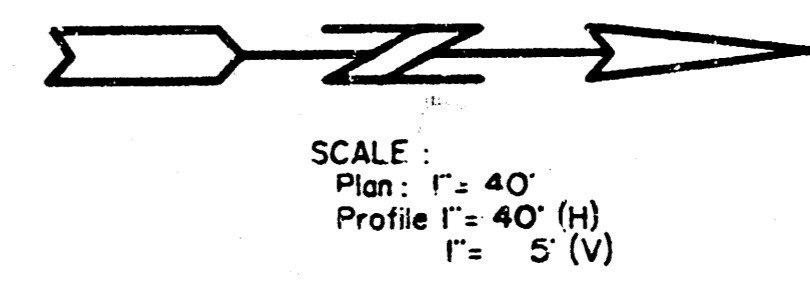
SHEET 1	TITLE
SHEET 2	PLAN PROFILE LINE 1, LINE 1A
SHEET 3	PLAN PROFILE LINE 1, LINE 1B, LINE 2

*AS BUILT  
Rd  
5-87*

SCALE:	APPROVED BY:	DRAWN BY:
DATE: 2-87		REVISED:
MUNICIPAL ENGINEERS Civil Engineers & Land Surveyors 254 Larn, Suite 221 Wichita, Kansas 67211		DRAWING NUMBER 1 of 3

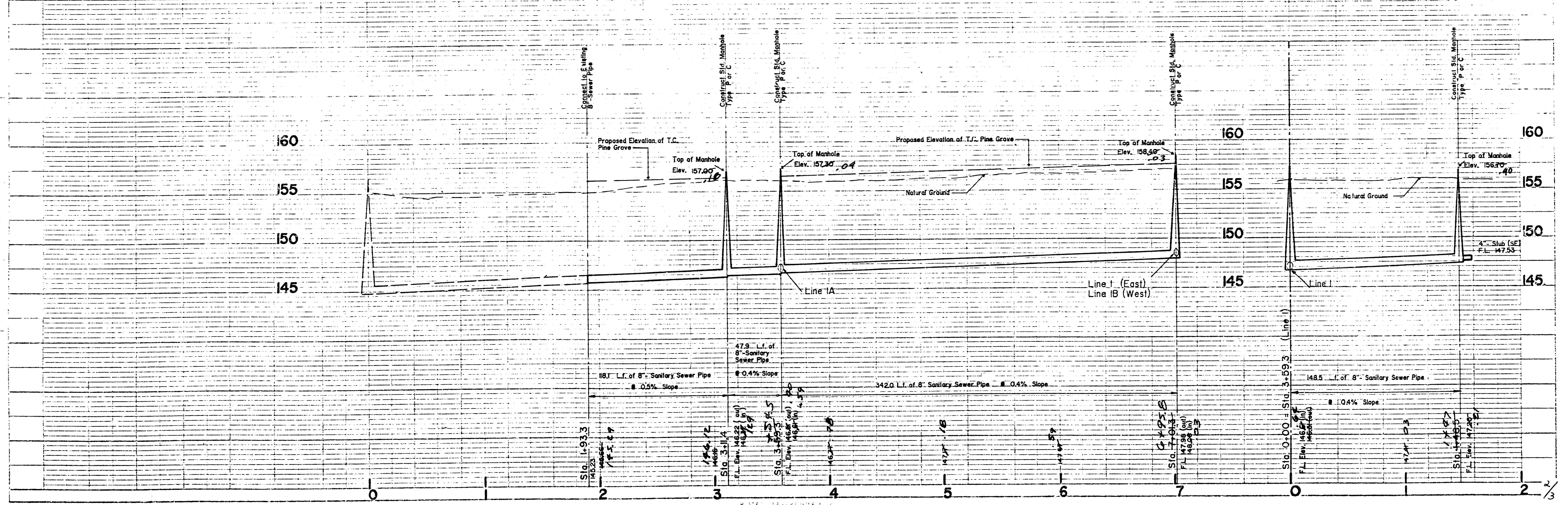


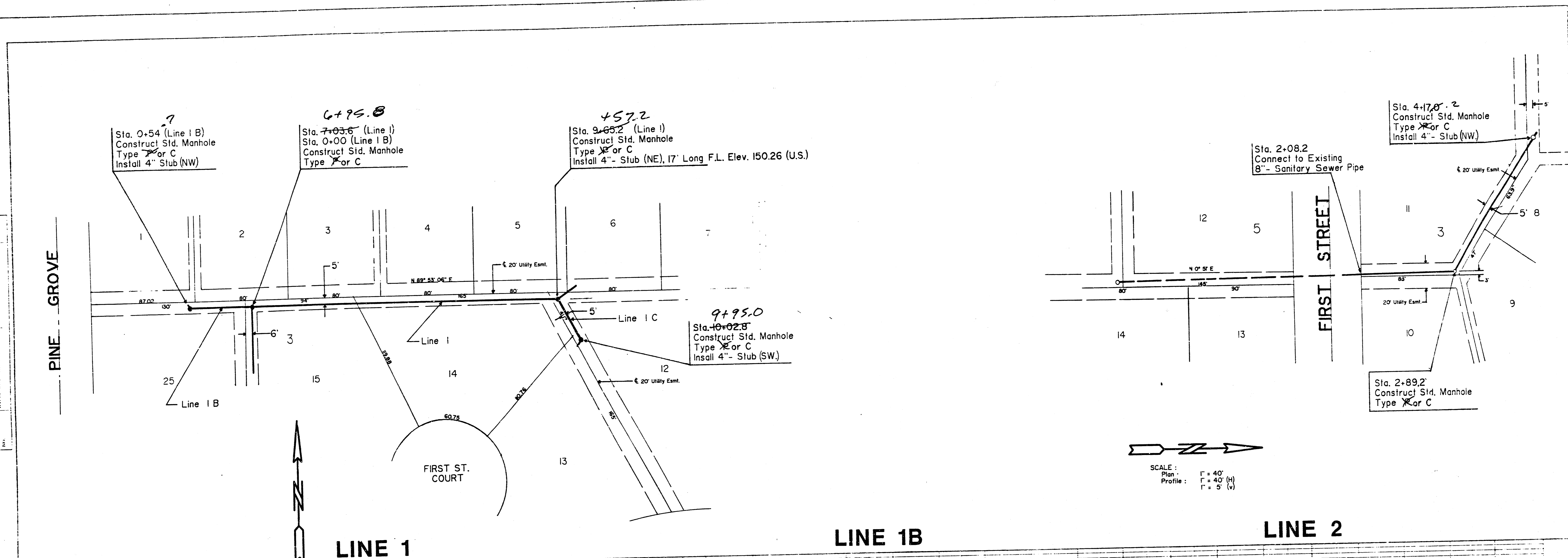
**NOTE :**  
 Prior to Beginning Construction the Contractor Shall Field Verify the Locations of Existing Sewer Pipes. The Contractor Shall Also Field Verify the Elevation, Size, and Type of the Existing 8" Sewer Pipes. Any Discrepancies Between Field Information and Information Shown in These Plans Shall Be Reported to the Engineer Prior to the Start of Construction.



LINE 1

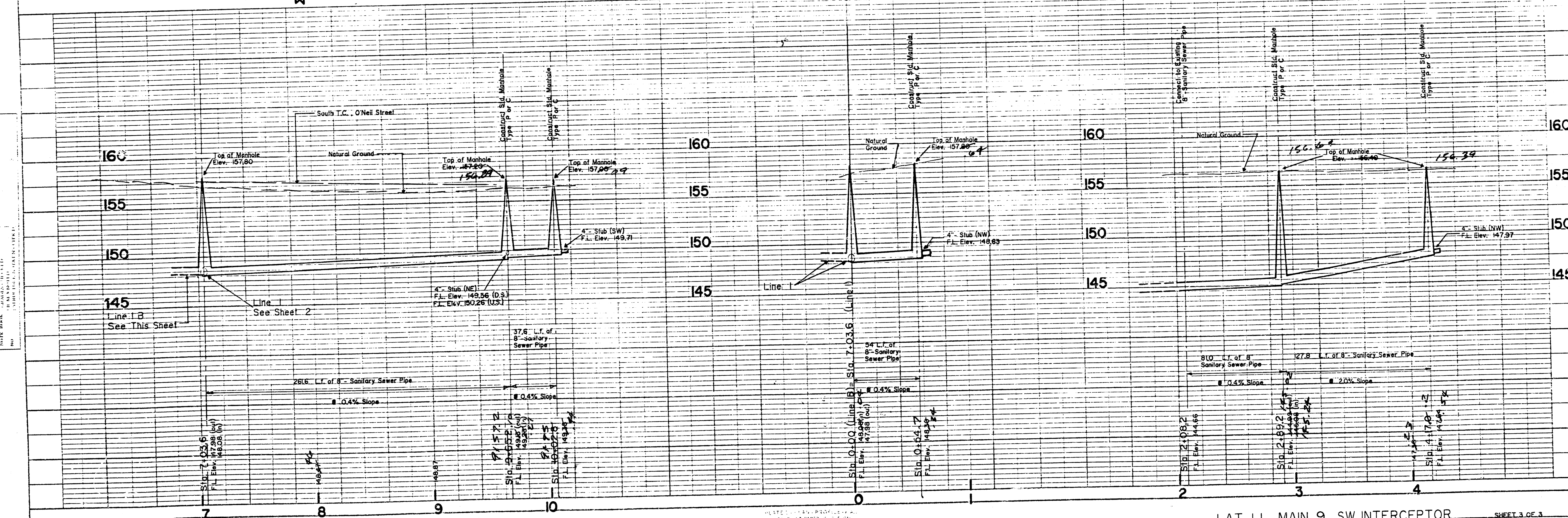
LINE 1A





PLAN  
 SHOWS THE  
 LOCATION OF  
 THE MAIN  
 AND  
 BRANCH  
 LINES  
 AND  
 THE  
 LOCATION  
 OF  
 THE  
 MANHOLES  
 AND  
 STUBS  
 TO  
 BE  
 INSTALLED

SCALE:  
 Plan: 1" = 40'  
 Profile: 1" = 40' (H)  
 1" = 5' (V)



PROFILE  
 SHOWS THE  
 ELEVATION OF  
 THE  
 GROUND  
 SURFACE  
 AND  
 THE  
 ELEVATION  
 OF  
 THE  
 SEWER  
 PIPE  
 AND  
 THE  
 MANHOLES