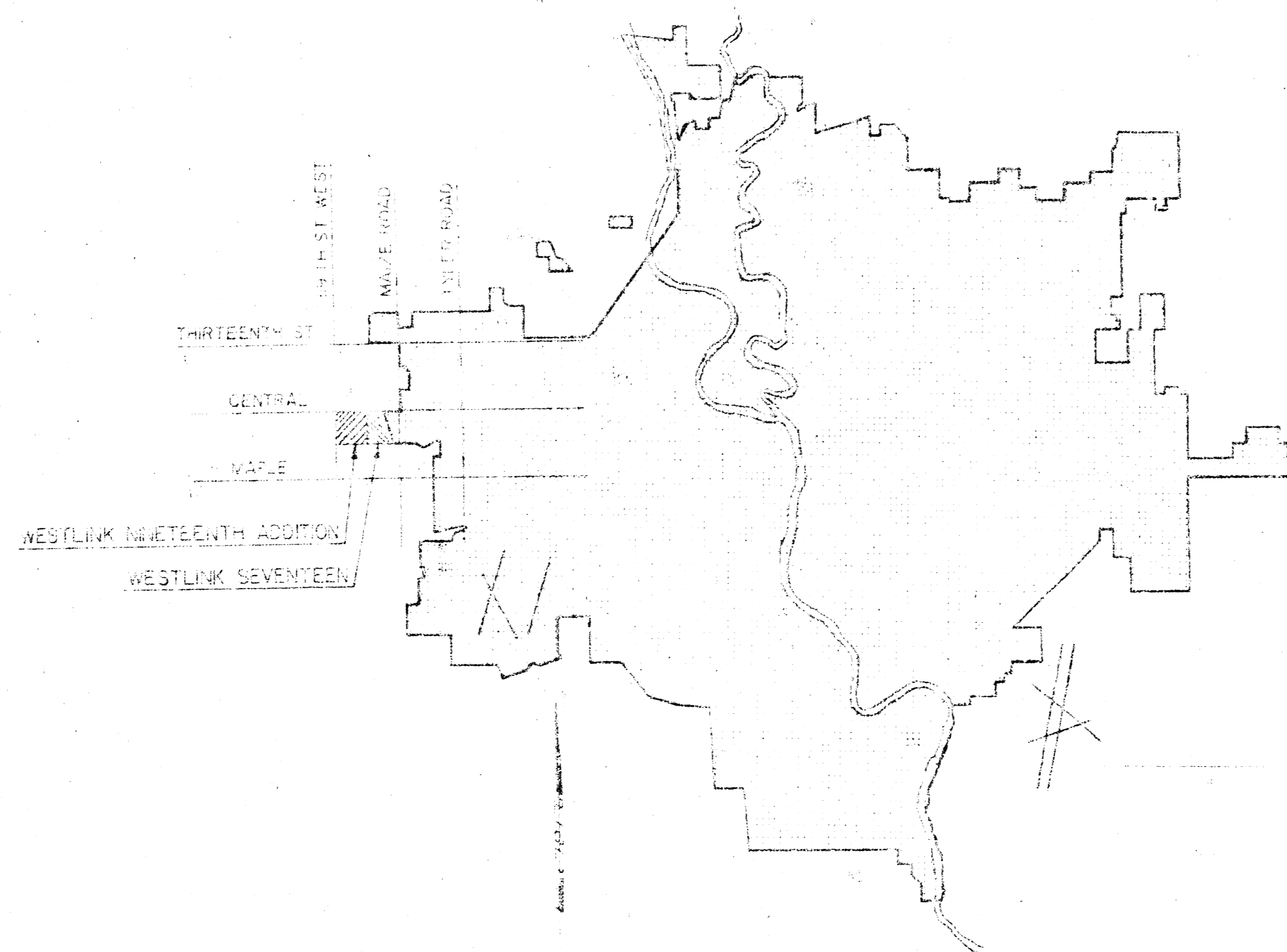


CONSTRUCTION PLANS FOR
 LATERAL 2, MAIN 10
 OF THE
 SOUTHWEST INTERCEPTOR SEWER

THE CITY OF WICHITA,
 SEDGWICK COUNTY, KANSAS

INDEX OF SHEETS

SHEET NO. 1	TITLE SHEET
SHEET NO. 2	KEY MAP
SHEET NO. 3	WESTLINK SEVENTEEN, FINAL PLAT
SHEET NO. 4	STANDARD RIDER DETAILS
SHEET NO. 5-10	PLAN-PROFILES



LOCATION MAP

CITY OF WICHITA PROJECT NO. 468-76-245-80688-000-000-001

JUNE, 1979

PLANS PREPARED BY

PROFESSIONAL ENGINEERING CONSULTANTS, P.A.

ENGINEERS

WICHITA, KANSAS

NOTE: THESE PLANS ARE THE PROPERTY OF THE CITY OF WICHITA, KANSAS. THEY ARE TO BE USED ONLY FOR THE PROJECT AND SITE SPECIFICALLY IDENTIFIED HEREON. ANY REUSE OR MODIFICATION OF THESE PLANS WITHOUT THE WRITTEN CONSENT OF THE CITY OF WICHITA IS PROHIBITED. THE CITY OF WICHITA ASSUMES NO LIABILITY FOR DAMAGES OF ANY KIND ARISING FROM THE USE OF THESE PLANS.

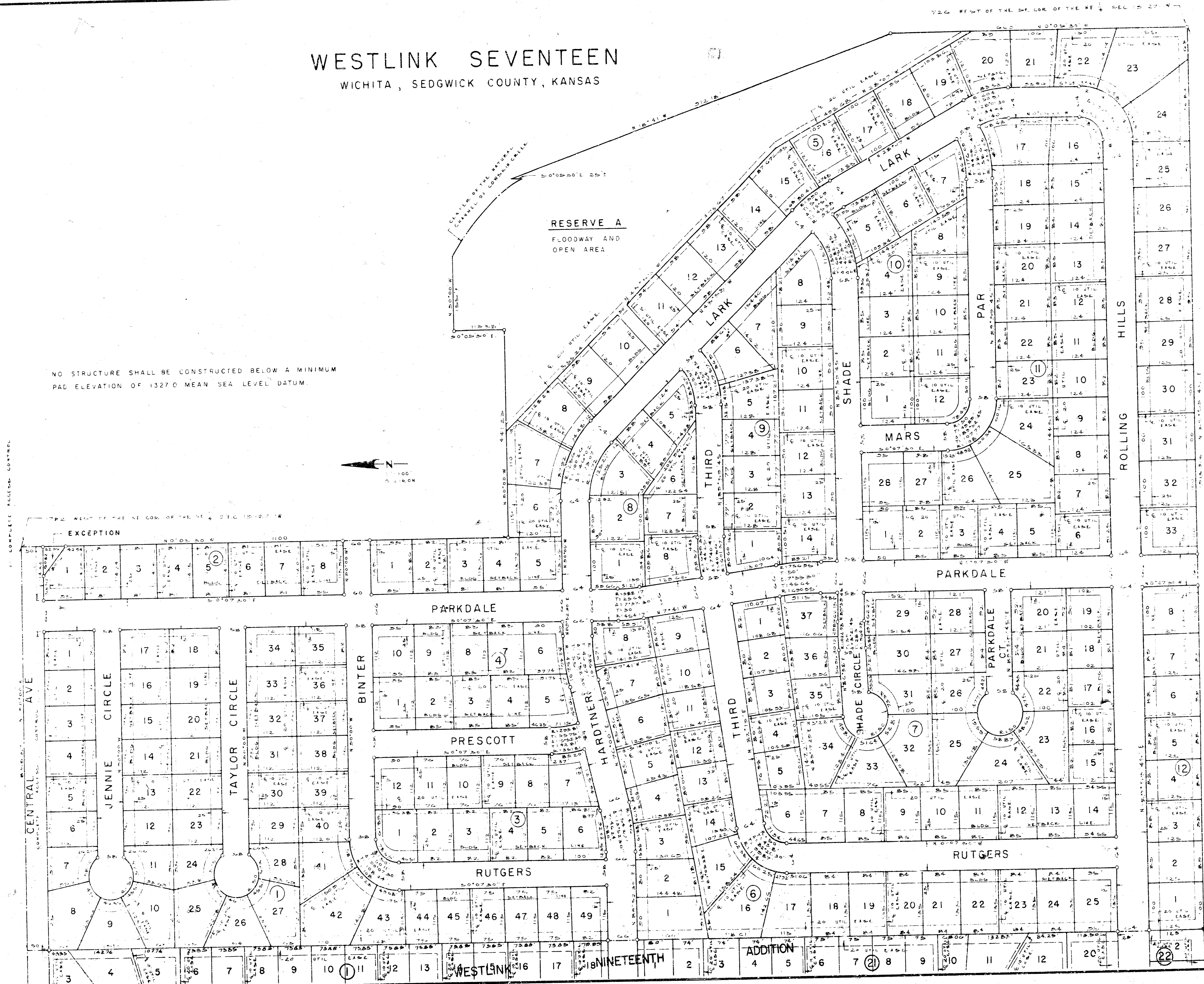
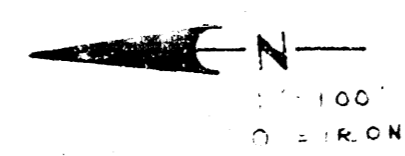
NOTE: ALL DIMENSIONS ARE TO FACE UNLESS OTHERWISE SPECIFIED. ALL DIMENSIONS ARE TO BE IN FEET AND INCHES. ALL DIMENSIONS ARE TO BE TO THE CENTERLINE OF THE PIPE UNLESS OTHERWISE SPECIFIED. ALL DIMENSIONS ARE TO BE TO THE CENTERLINE OF THE PIPE UNLESS OTHERWISE SPECIFIED.



WESTLINK SEVENTEEN

WICHITA, SEDGWICK COUNTY, KANSAS

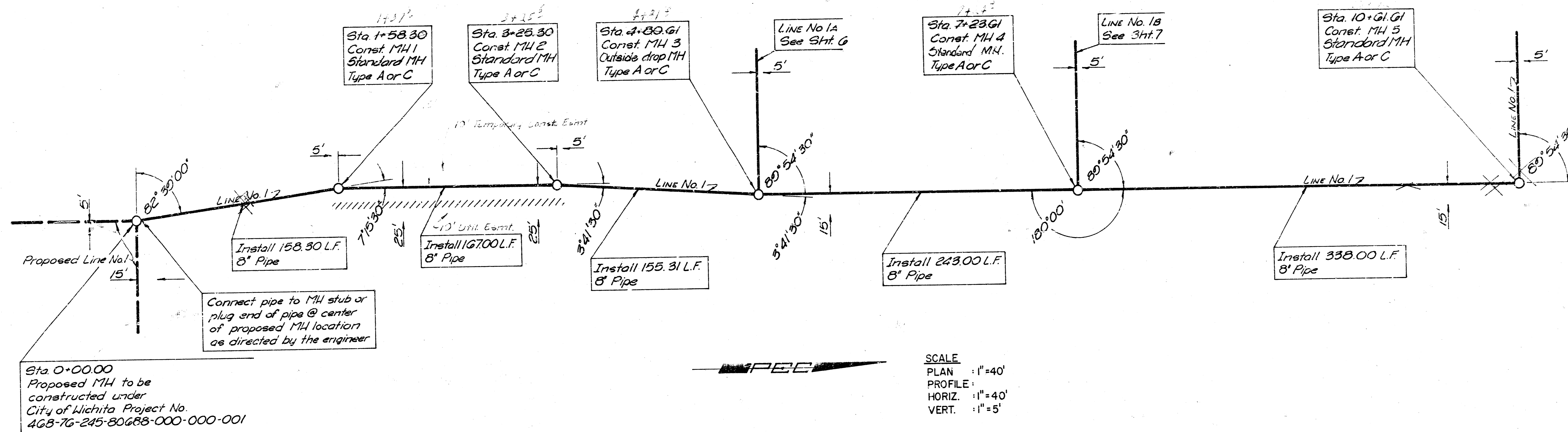
NO STRUCTURE SHALL BE CONSTRUCTED BELOW A MINIMUM
PAD ELEVATION OF 1327.0 MEAN SEA LEVEL DATUM.



No.	Revision	By	Date
CITY OF WICHITA, KANSAS LATERAL 2, MAIN 10 OF THE SOUTHWEST INTERCEPTOR SEWER WESTLINK SEVENTEEN FINAL PLAT R. W. LINN, P. E., CITY ENGINEER CITY OF WICHITA, PROJECT NO. 488-76-245-RO886-000-000-001 PROFESSIONAL ENGINEERING CONSULTANTS, P.A. ENGINEERS WICHITA, KANSAS			
Designed by	Job No.	Sheet	
Drawn by	Date	3 / 10 / 10	

Standard

Note: Save all trees on lots 1 & 2, Blk. 6.

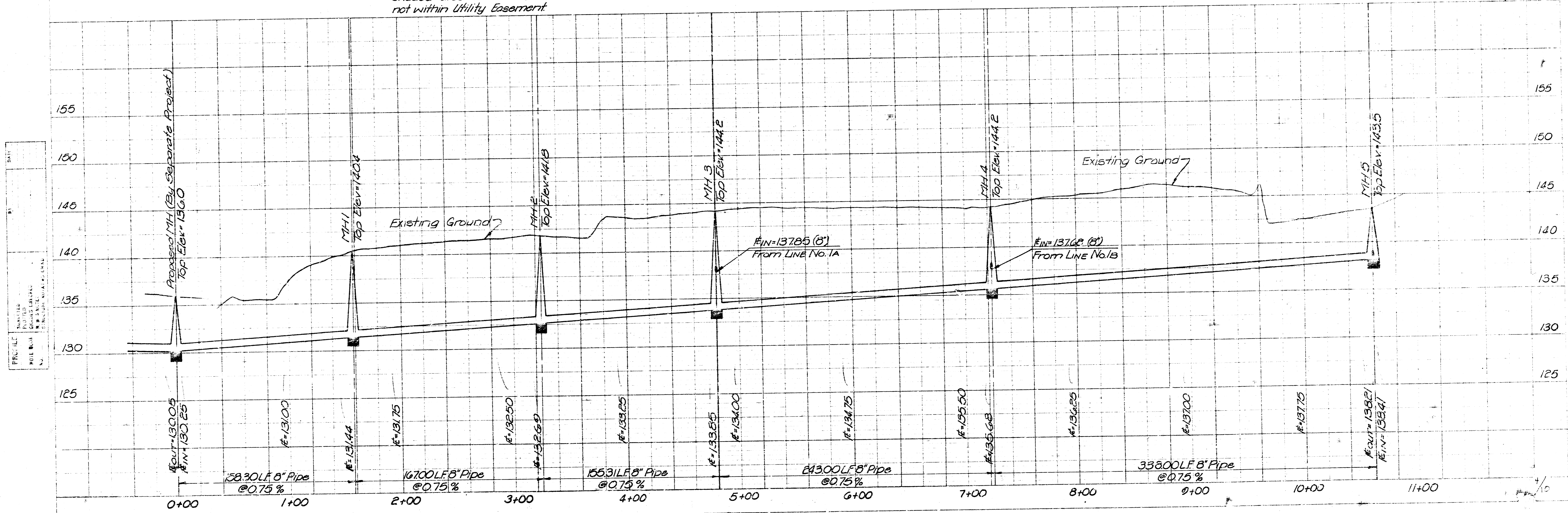


SCALE
 PLAN : 1"=40'
 PROFILE : 1"=40'
 VERT. : 1"=5'



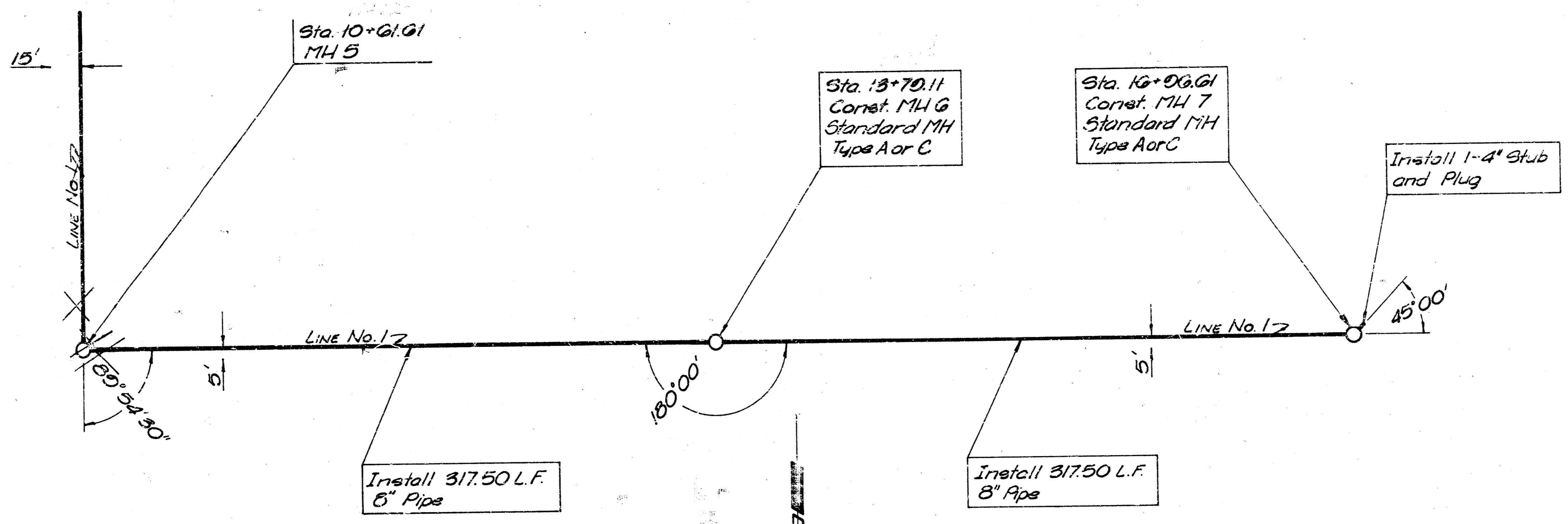
CITY OF WICHITA, KANSAS
 LATERAL MAIN TO
 OF THE SOUTHWESTERN DISTRICT FOR SEWER
LINE NO. 1
 R.W. LINN, P.E., CITY ENGINEER
 C of W. Proj. No. 468-76-245-80688-000-000-001
 MDS, R/W
 TC, CLK
 7/19/92
 June 19, 1992

Shaded area is not within utility easement

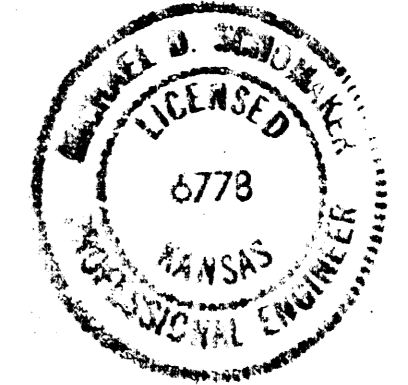


PLAN
 SHEET NO. 5
 DATE: 10/1/78
 PROJECT: S.W. 10th St. Interceptor Sewer
 DRAWN BY: J. J. ...
 CHECKED BY: ...
 IN CHARGE: ...

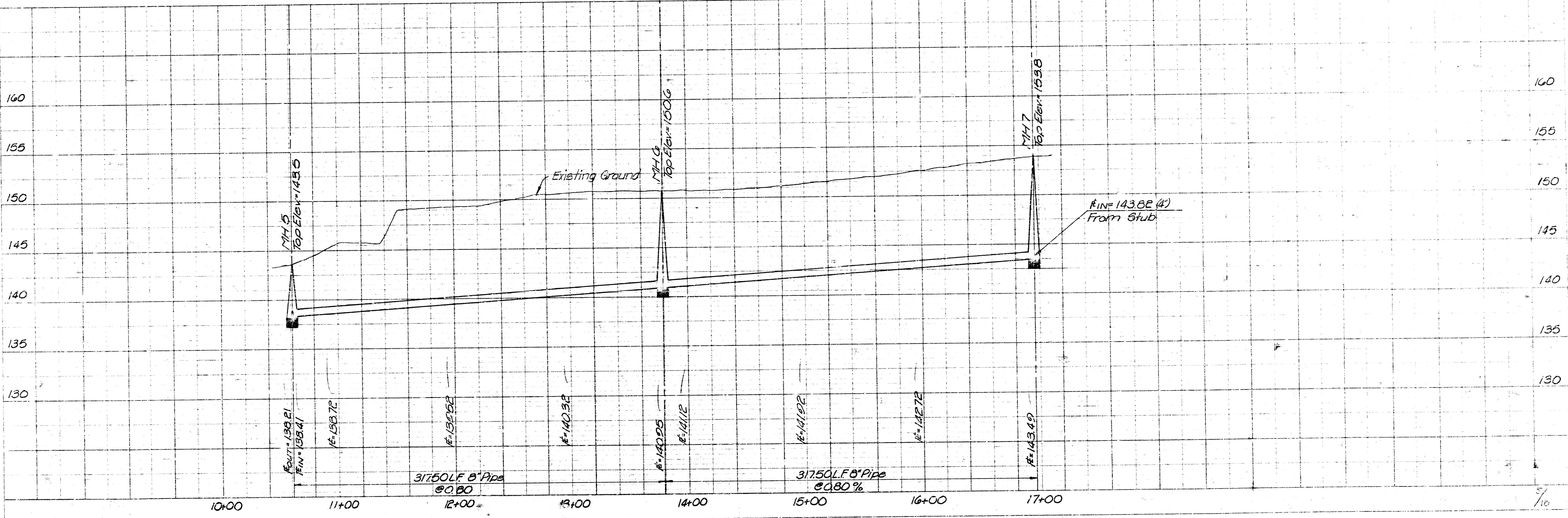
PROFILE
 SHEET NO. 5
 DATE: 10/1/78
 PROJECT: S.W. 10th St. Interceptor Sewer
 DRAWN BY: J. J. ...
 CHECKED BY: ...
 IN CHARGE: ...



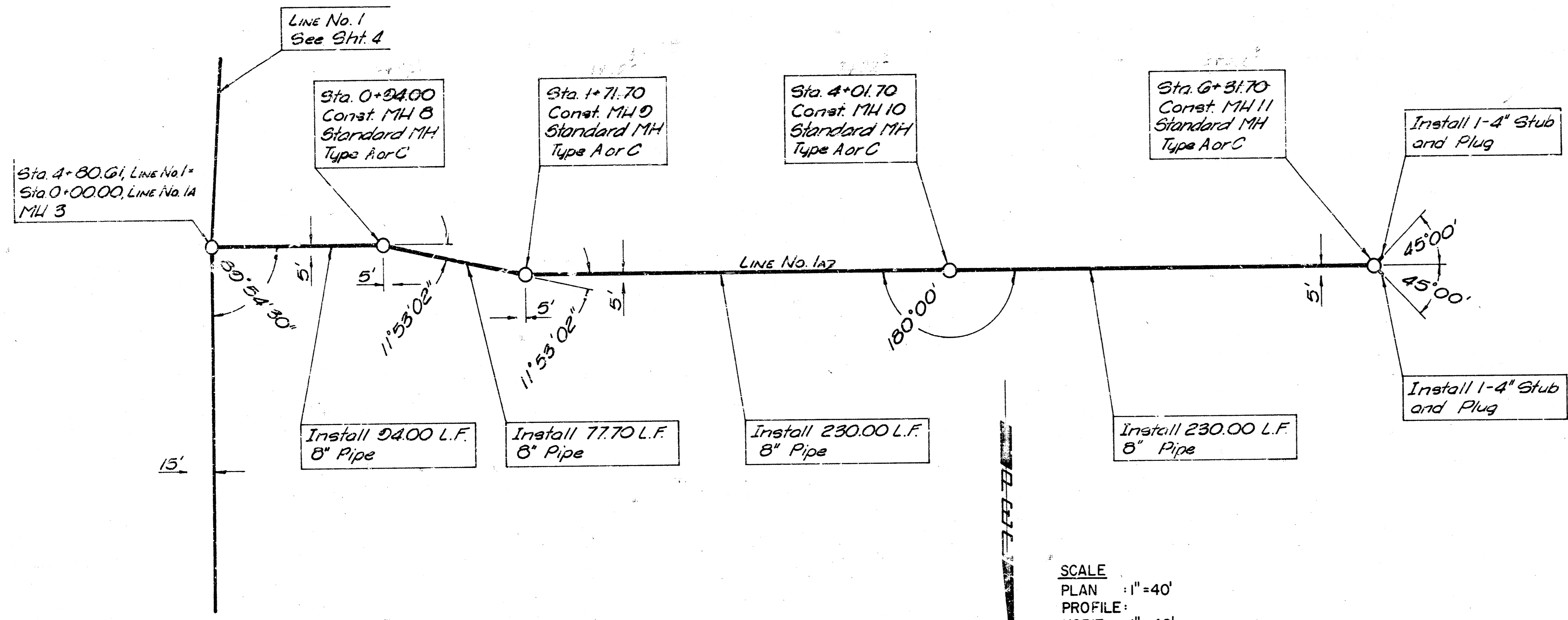
SCALE
 PLAN : 1" = 40'
 PROFILE : 1" = 40'
 HORIZ. : 1" = 40'
 VERT. : 1" = 5'



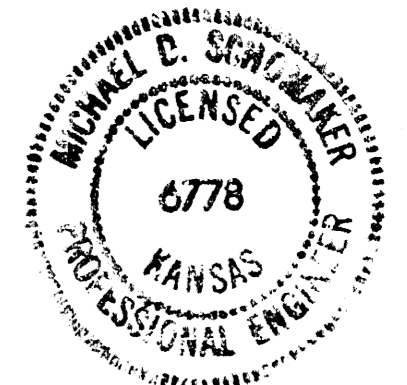
CITY OF WICHITA, KANSAS
 DEPARTMENT OF PUBLIC UTILITIES
 LATERAL 2 MAIN 10
 LINE NO. 1
 S.W. 10th St. Interceptor Sewer
 C. of W. Proj. No. 448-76-257-90585-050-000-001
 M.D.S., P.E.T.
 T.C. CLARK
 10/1/78
 5 10



DRAWN BY: [Blank]
 CHECKED BY: [Blank]
 DATE: [Blank]

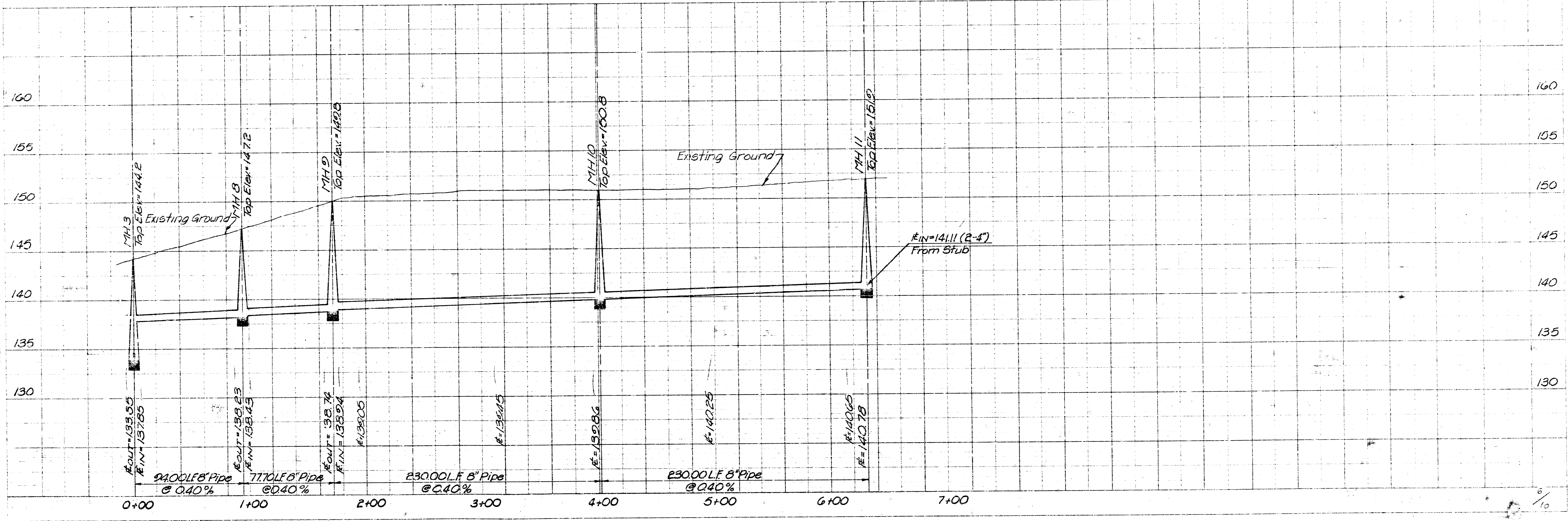


SCALE
 PLAN : 1" = 40'
 PROFILE : 1" = 40'
 HORIZ. : 1" = 40'
 VERT. : 1" = 5'

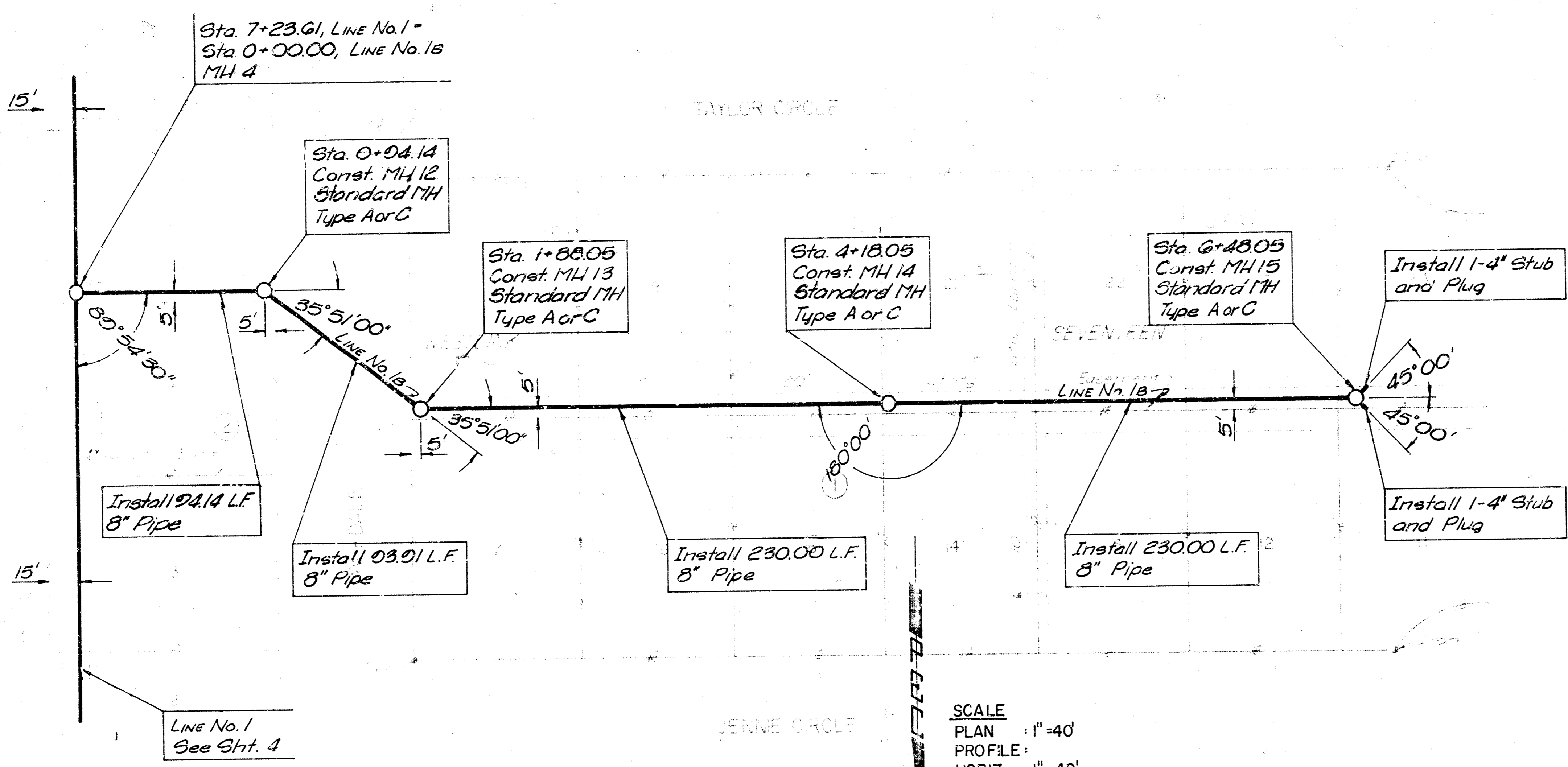


CITY OF WICHITA, KANSAS
 DEPARTMENT OF PUBLIC UTILITIES
 OF THE SOUTHWEST INTERCEPTOR SEWER
LINE NO. 1A
 R.W. LIND, P.E. CITY ENGINEER
 C of W. Proj. No. 463-76-245-60668-000-001

PROFESSIONAL ENGINEERING CONSULTANTS, P.A.
 701/292-2
 701/292-2
 JUNE 1979
 G 10



TITLE: _____
 PROJECT: _____
 SHEET NO.: _____
 DATE: _____



SCALE
 PLAN : 1"=40'
 PROFILE :
 HORIZ. : 1"=40'
 VERT. : 1"=5'



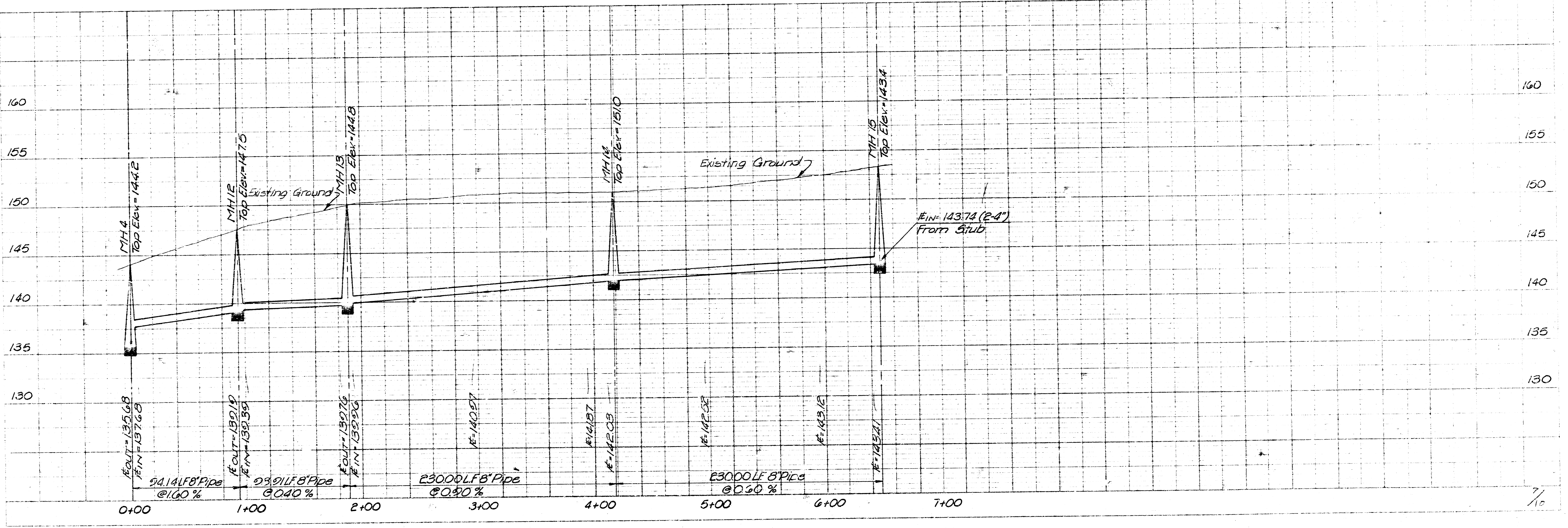
CITY OF WICHITA, KANSAS
 LATERAL 2 MAIN ID
 OF THE SOUTHWEST INTERCEPTOR SEWER
LINE NO. 18
 R.W. LINN, P.E. CITY ENGINEER
 C. of W. Proj. No. 468-78-245-90686-000-000-001

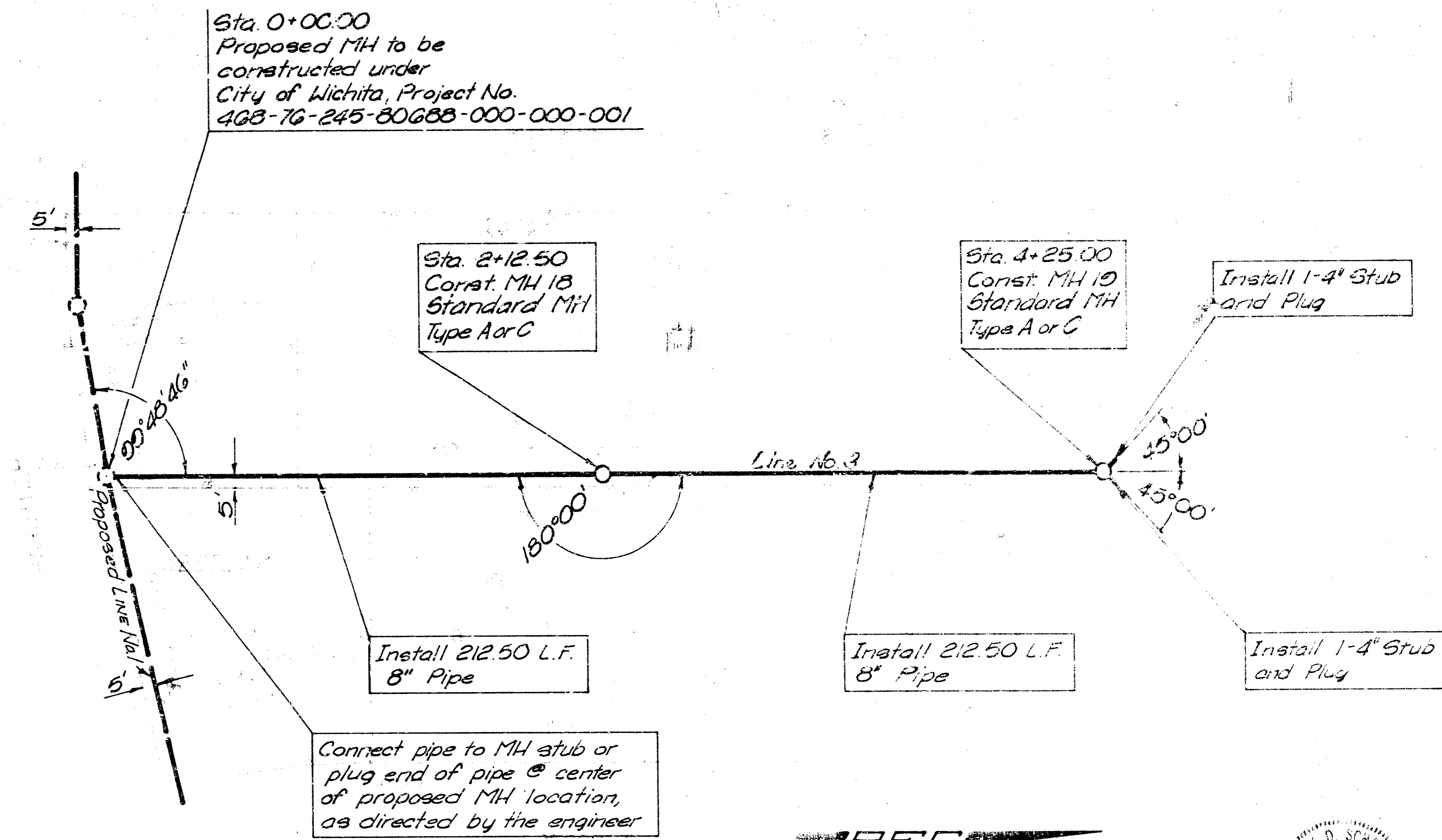
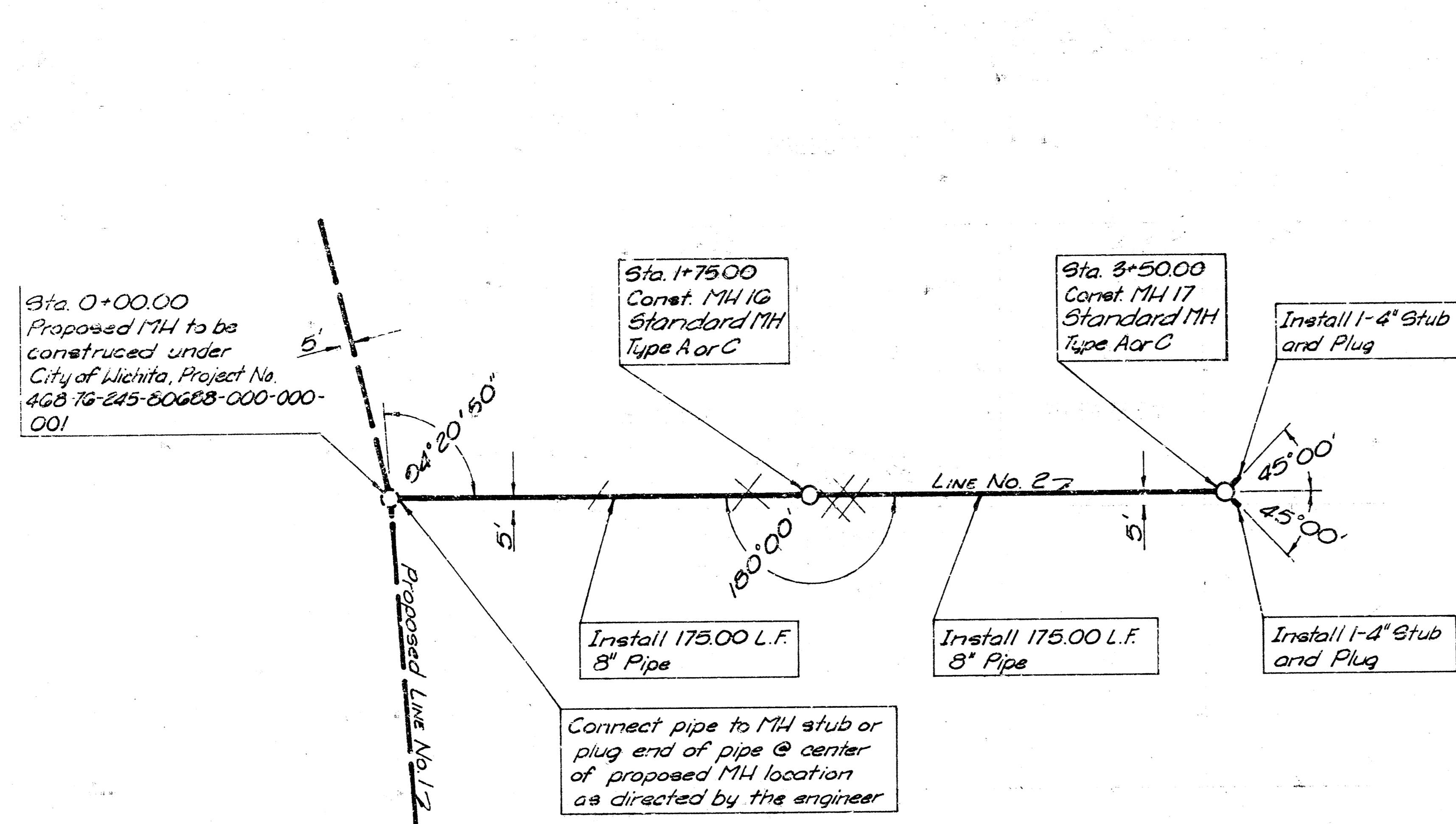
MDS:RFJ
 TC:GAK

1978
 June 1978

7 10

SHEET NO.: _____
 DATE: _____



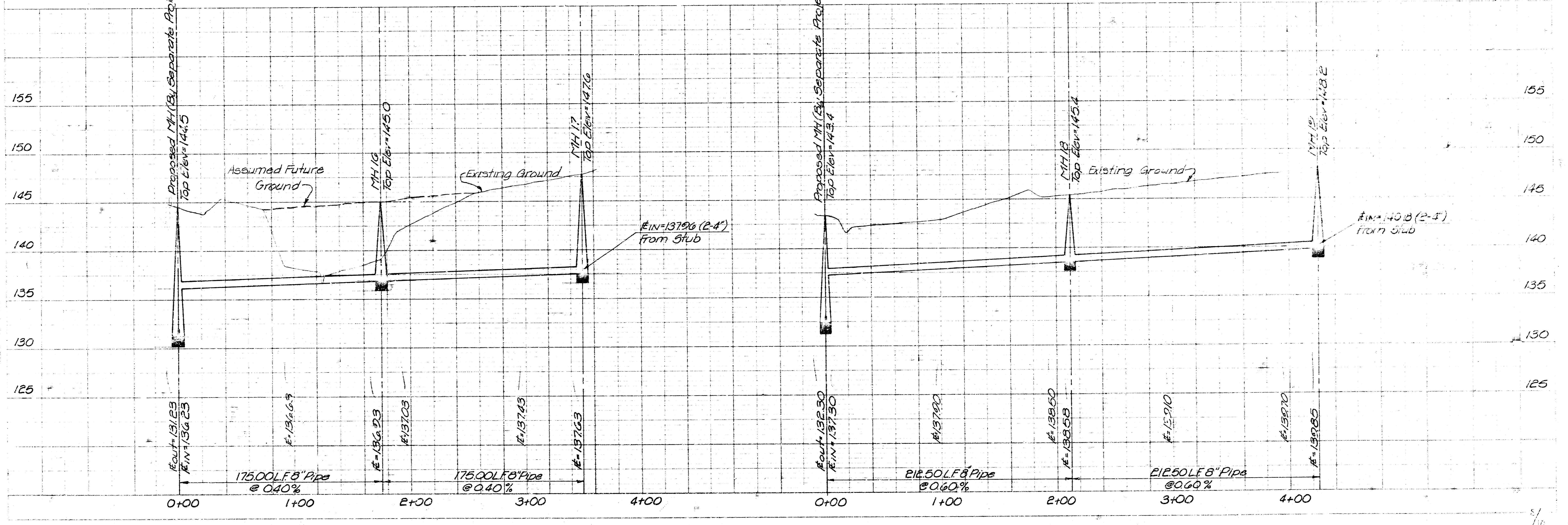


SCALE
 PLAN : 1"=40'
 PROFILE : 1"=40'
 HORIZ. : 1"=40'
 VERT. : 1"=5'

NOTE: EXCESS EXCAVATED MATERIAL FROM THIS PROJECT SHALL BE USED TO FILL THE GULLY STATION 0+70 TO 2+30 ON LINE NO. 2 SUCH THAT WILL PREVENT SEWER FROM BEING DAMAGED PRIOR TO DEVELOPMENT OF THE AREA. MINIMUM COVER OVER TOP OF THE SEWER PIPE SHALL BE 3 FT. THIS WORK WILL NOT BE PAID FOR DIRECTLY AND SHALL BE CONSIDERED AS SUBSIDIARY TO THE OTHER ITEMS OF WORK.

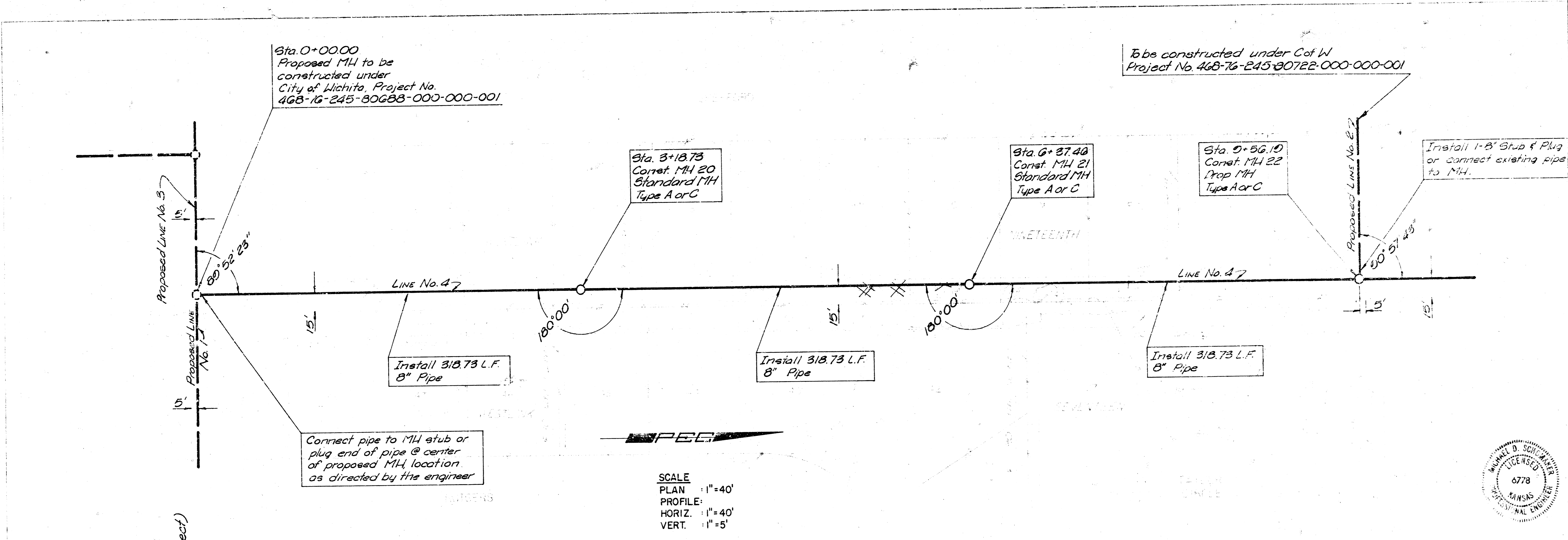


CITY OF WICHITA, KANSAS
 LATERAL 2, MAIN 10
 OF THE SOUTHWEST INTERCEPTOR SEWER
LINE NO. 2 & 3
 R.W. LUKS, P.E. CITY ENGINEER
 C. of W. Proj. No. 468-76-245-80688-000-000-001

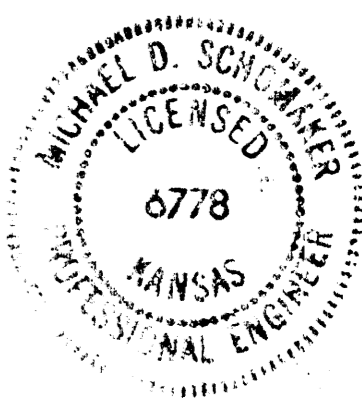


TITLE	PROJECT	DATE
DESCRIPTION	DATE	DATE
BY	BY	BY
CHECKED	CHECKED	CHECKED

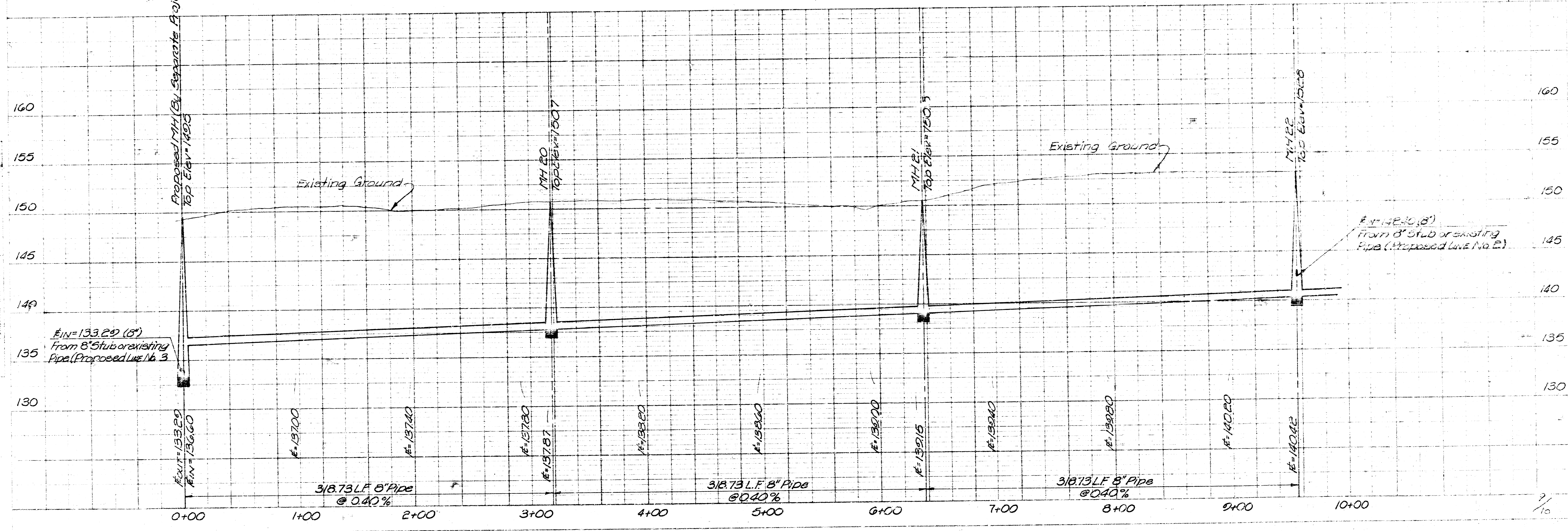
PROJECT	DATE
DESCRIPTION	DATE
BY	BY
CHECKED	CHECKED



SCALE
 PLAN : 1" = 40'
 PROFILE : 1" = 40'
 HORIZ. : 1" = 40'
 VERT. : 1" = 5'



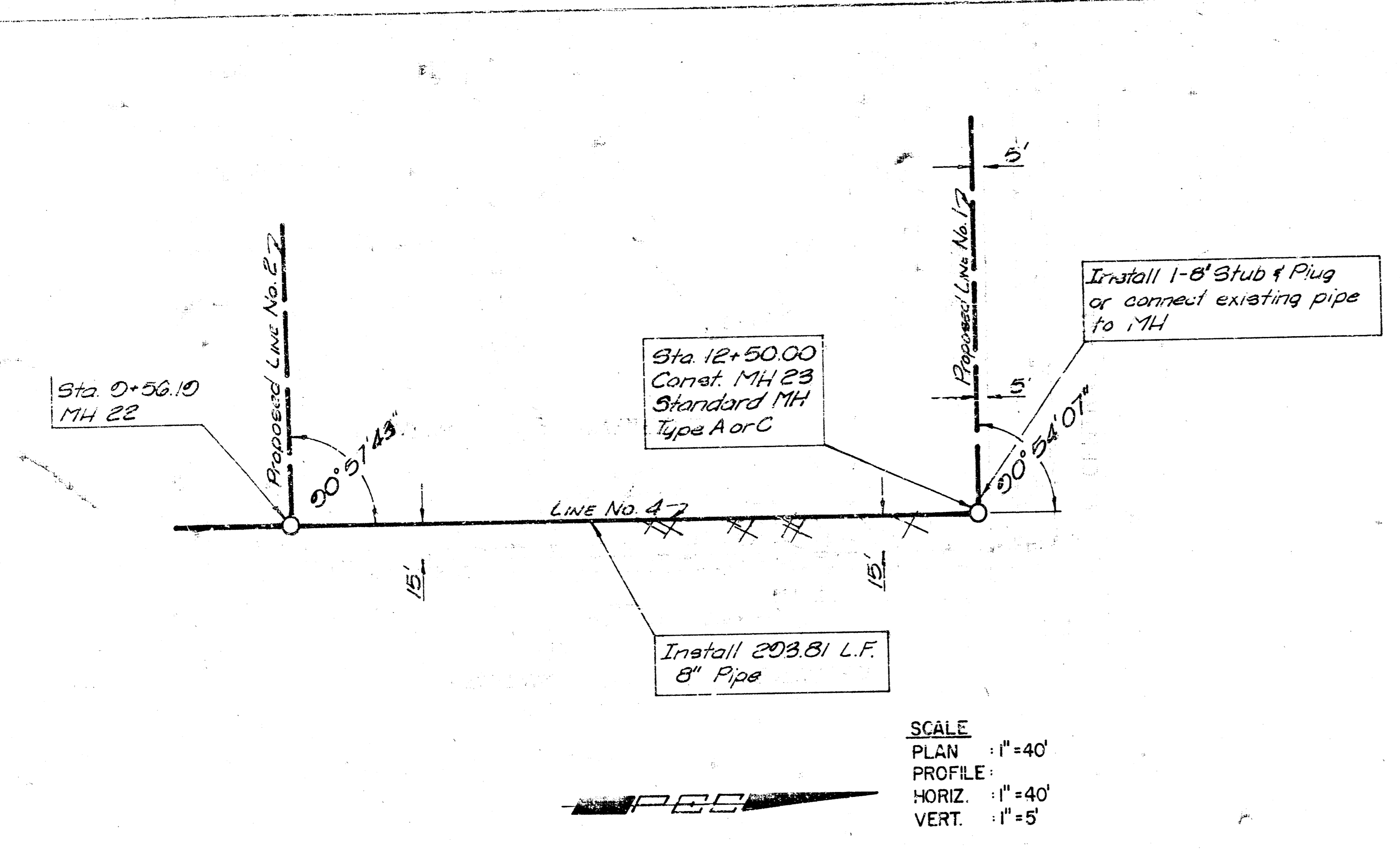
CITY OF WICHITA, KANSAS
 DEPARTMENT OF PUBLIC UTILITIES
 ENGINEER
 DANIEL D. SCHAEFFER
 LICENSE NO. 6778
 STATE OF KANSAS
 PROJECT NO. 468-76-245-80722-000-000-001
 DATE: JUNE 1978



FILMED FROM THE BEST COPY AVAILABLE

PLAN
 SHEET NO. 10
 PROJECT NO. 10-10
 DATE: 7/15/52
 BY: M.D.S., A.P.J.
 CHECKED: T.C. CHX

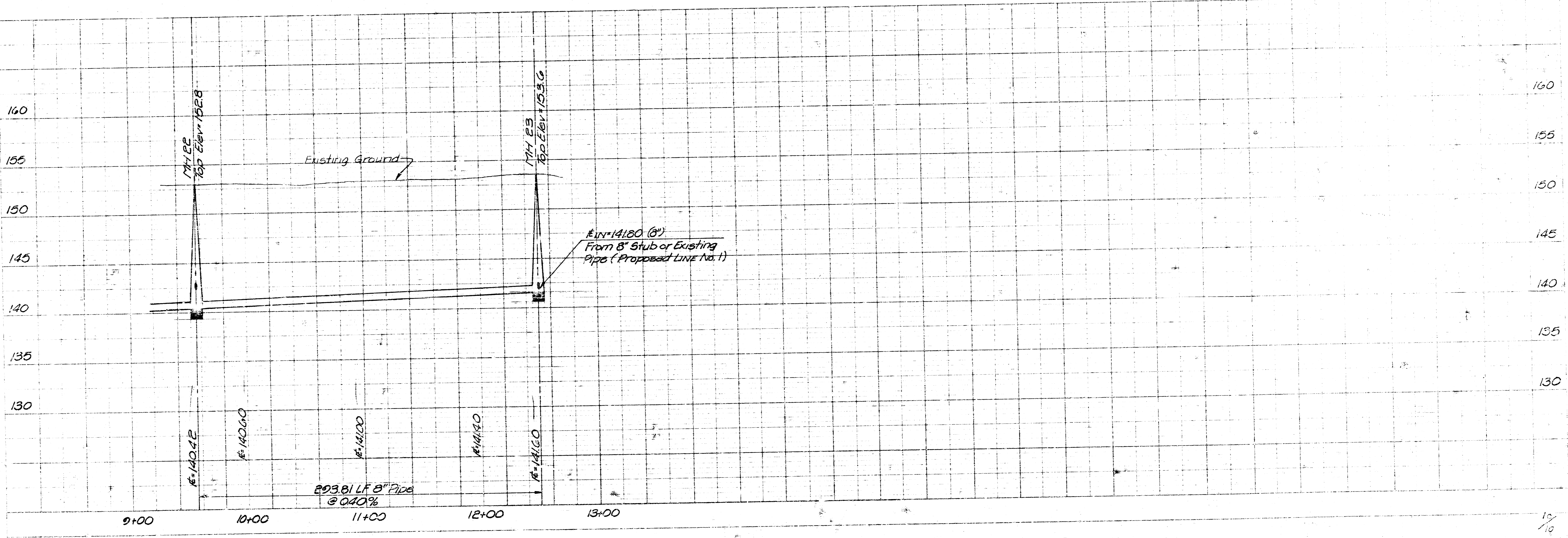
PROFILE
 SHEET NO. 10
 PROJECT NO. 10-10
 DATE: 7/15/52
 BY: M.D.S., A.P.J.
 CHECKED: T.C. CHX



SCALE
 PLAN : 1" = 40'
 PROFILE : 1" = 40'
 HORIZ. : 1" = 40'
 VERT. : 1" = 5'



CITY OF WICHITA, KANSAS
 NATIONAL BOARD OF FIRE UNDERWRITERS, P.A.
 OF THE SOUTHERN INTERIOR ENGINEER
LINE NO. 4
 M.D.S., A.P.J.
 T.C. CHX
 7/15/52
 June 1978



14 10 5 18