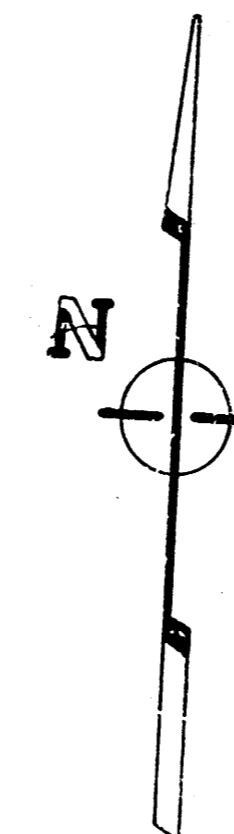


# LATERAL 3, MAIN II, SOUTHWEST INTERCEPTOR SEWER

PROJECT NO.

468-76-245-81106-000-000-001



**GENERAL NOTES**

The contractor shall be responsible for preserving property irons. The contractor shall be required to re-establish any property irons which are damaged or destroyed by his construction operations. Such irons shall be re-established by a licensed land surveyor or a professional engineer in accordance with state laws.

The contractor shall contact the utility companies for any proposed or existing underground lines which they may have in the vicinity of construction of this project.

..... BENEFIT DISTRICT

## CITY OF WICHITA, KANSAS

MIKE LINDEBAK \_\_\_\_\_ CITY ENGINEER



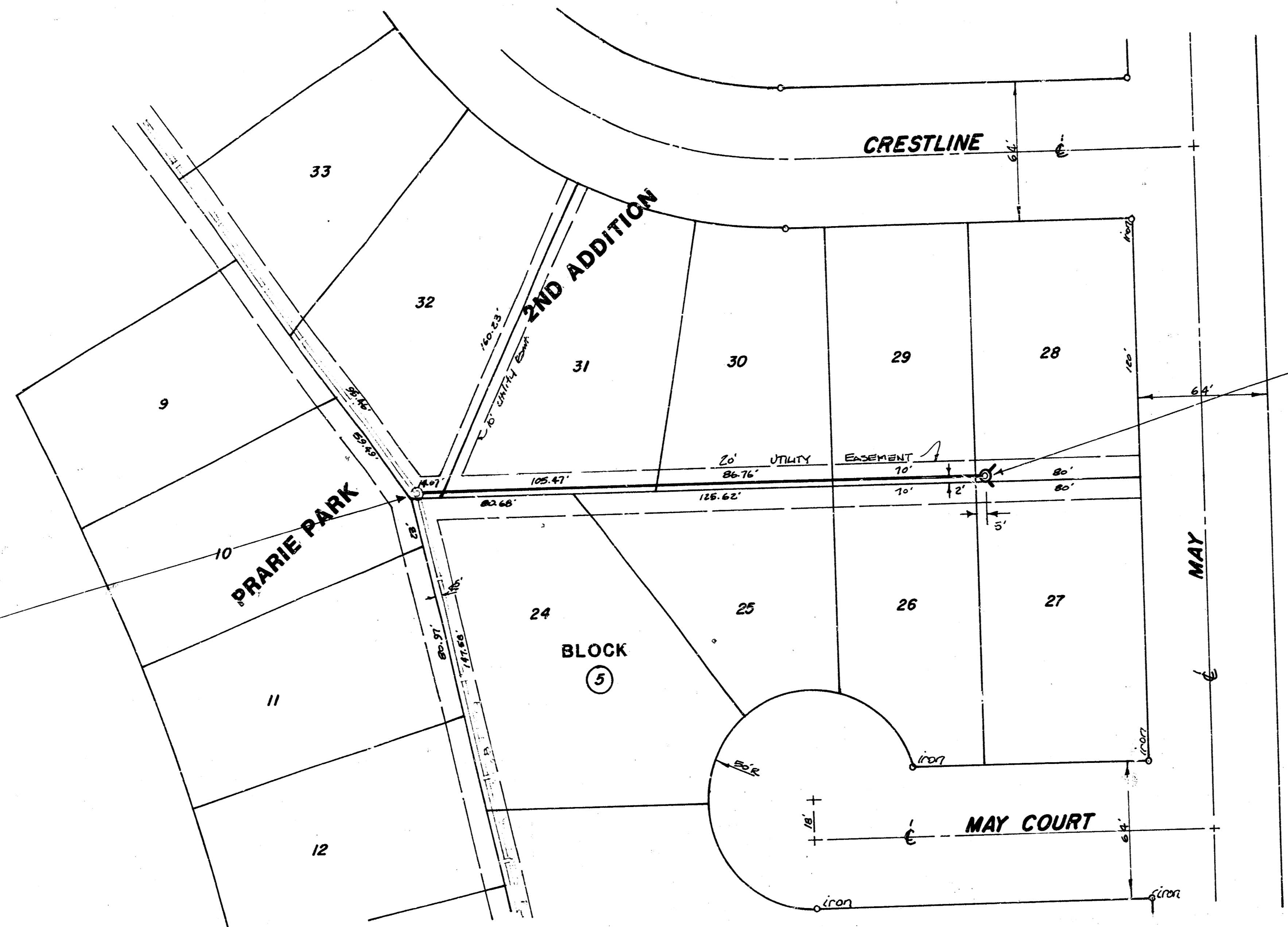
AUGUST 1984

**BAUGHMAN COMPANY, P.A.**  
SURVEYING & ENGINEERING  
316/262-7271 • 330 LAURA • WICHITA, KANSAS 67211

1/3

BENCH MARK #1: CITY DISC. CENTER OF MEDIAN STRIP ON U.S. 54 AND 40' ENE OF E. MAIZE ROAD ELEV. = 136.97 CITY DATUM

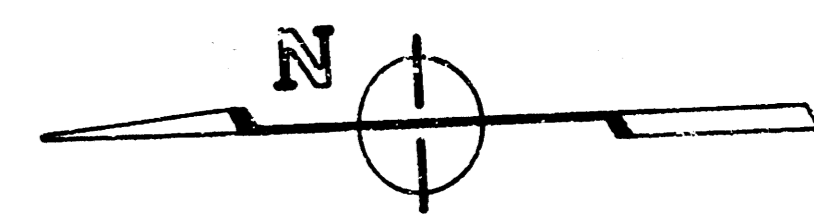
BENCH MARK #2: R.R. SPIKE IN NE SIDE OF POWER POLE 80' N OF SW CORNER LOT 15, BLK B PRARIE PARK 2ND ADDN. ELEV. = 140.65 CITY DATUM



STATION 0+00 CONNECT TO EXISTING MANHOLE @ 8" STUB PVC PIPE

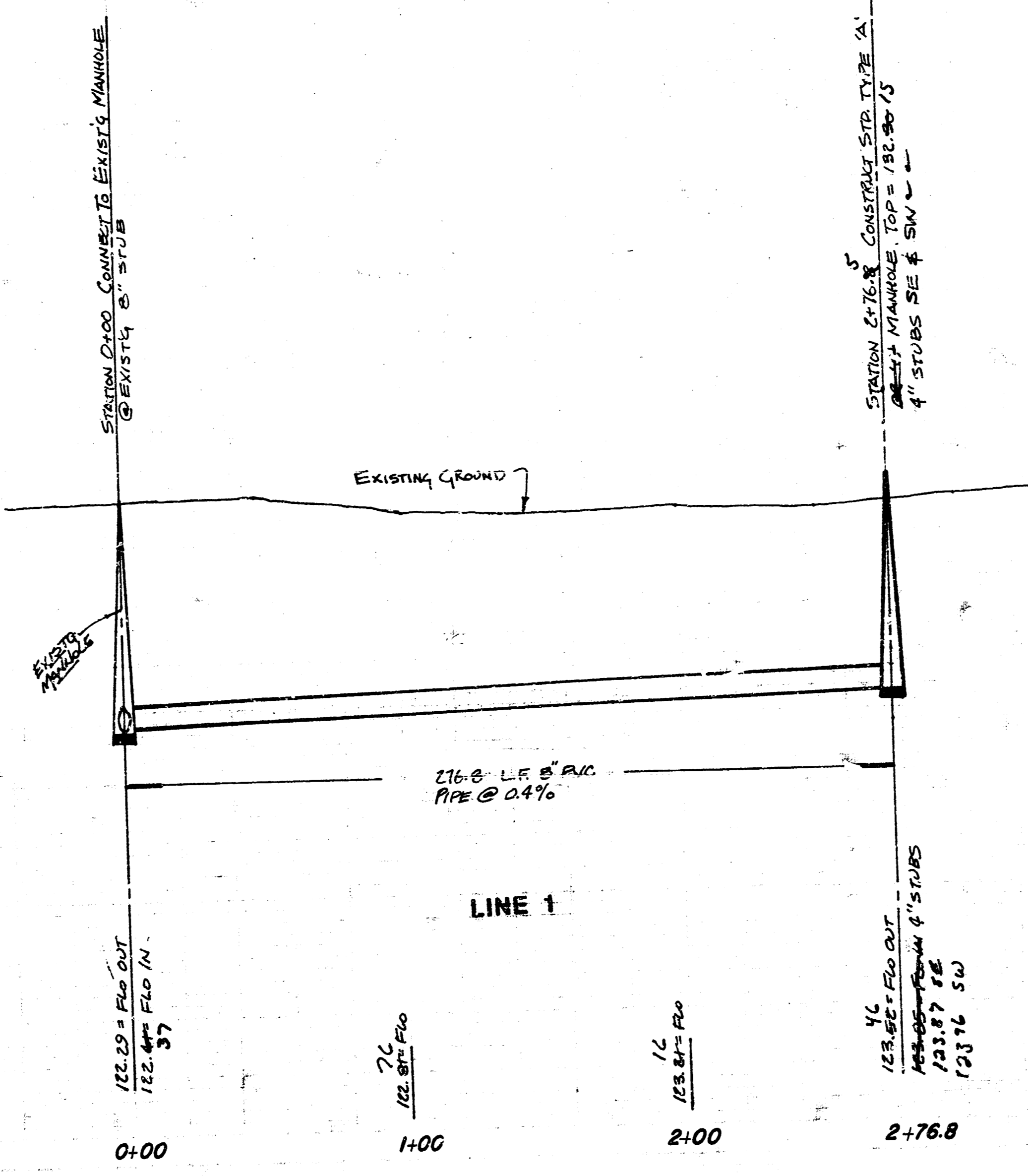
STATION 2+76.8 CONSTRUCT STD. TYPE 'A' OR 'C' MANHOLE TOP = 132.30 4" STUBS SE & SW

*As Built  
J.L.  
11-8-1*



SCALE: 1" = 40' PLAN  
1" = 40' PROFILE HORIZ.  
1" = 5' PROFILE VERT.

135  
130  
125  
120



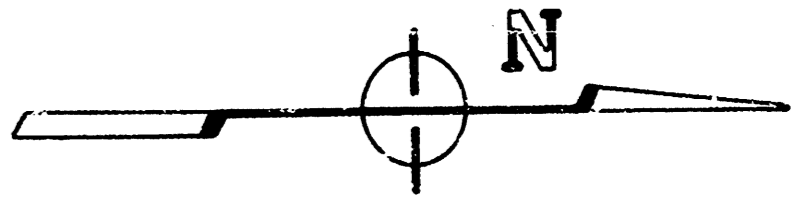
**LATERAL 3, MAIN 11, SWI**  
PROJECT NO.  
468-76-24 1106-000-000-001

CITY OF WICHITA, KANSAS

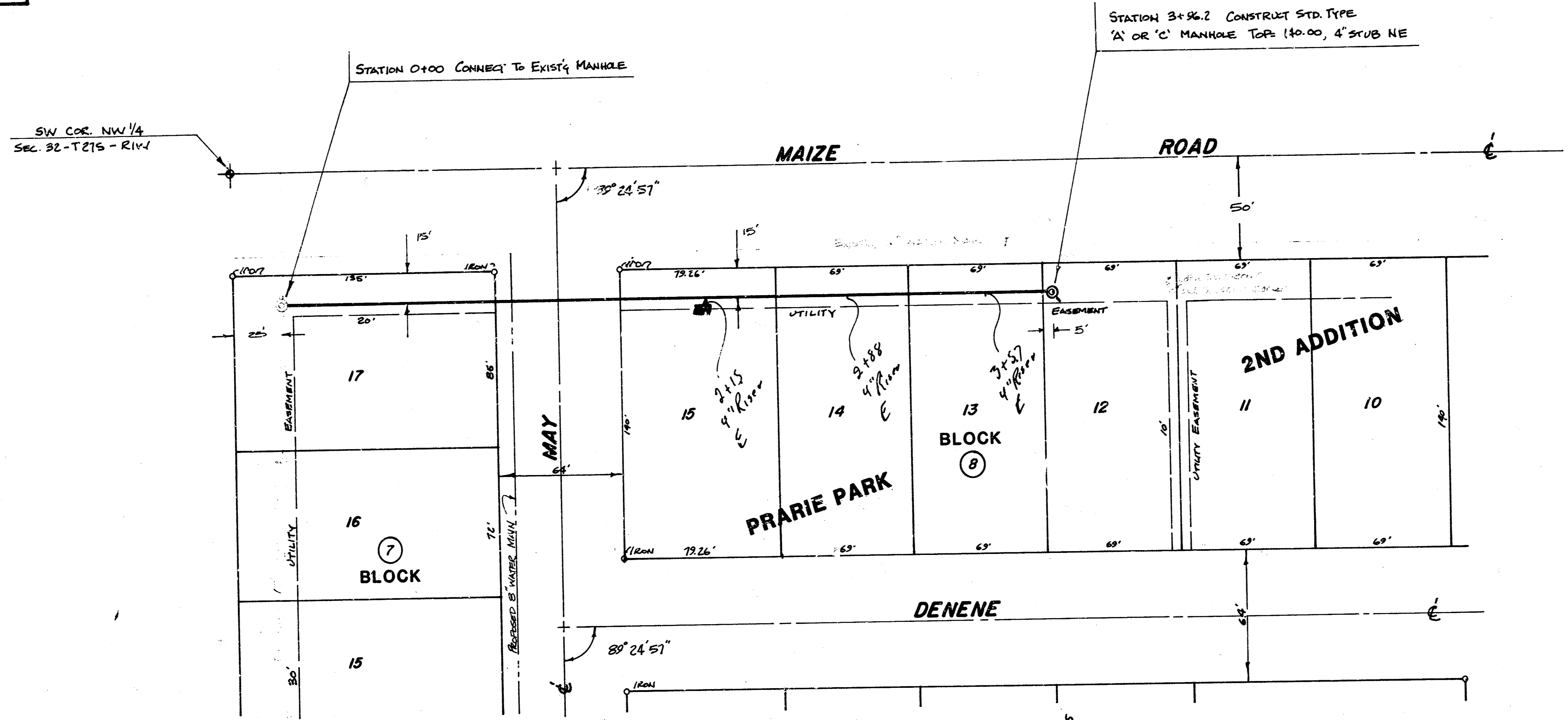
**BAUGHMAN COMPANY, P.A.**  
SURVEYING & ENGINEERING  
316/262-7271 • 330 LAURA • WICHITA, KANSAS 67211

BENCH MARK #1: CITY DIOC. CENTER OF MEDIAN STRIP ON U.S. 54 AND 40' ENE OF & MAIZE ROAD ELEV. = 134.97 CITY DATUM

BENCH MARK #2: R.R. SPIKE IN NE SIDE OF POWER PBLE 80' N. OF SW CORNER LOT 15, BLK 8 PRARIE PARK 2ND ADDN. ELEV. = 140.65 CITY DATUM

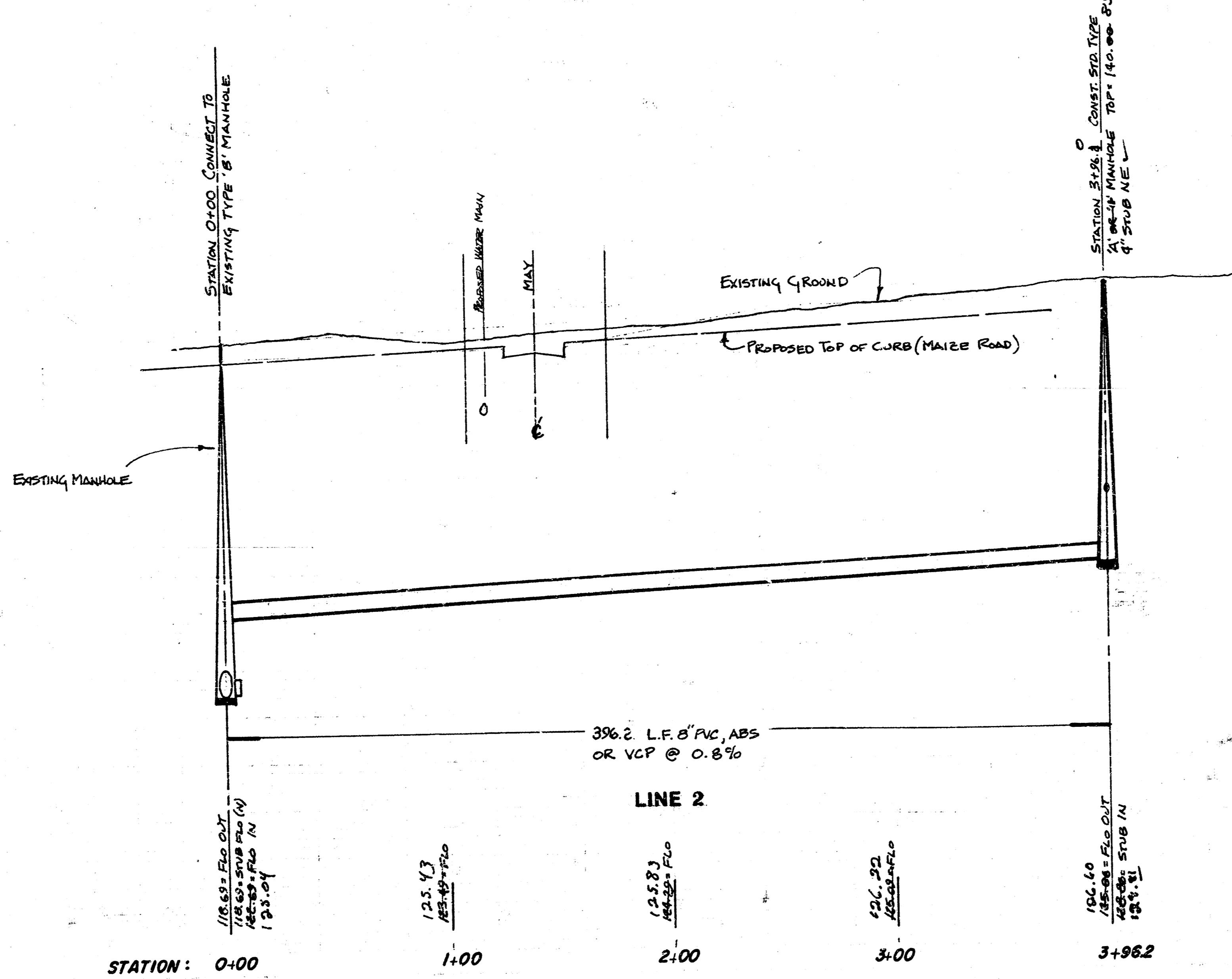


SCALE: 1" = 40' PLAN  
 1" = 40' PROFILE HORIZ.  
 1" = 5' PROFILE VERT.



*As Built*  
*J.L.L.*  
*11-84*

140  
 135  
 130  
 125  
 120  
 115



**LATERAL 3, MAIN 11, SWI**  
 PROJECT NO.  
 468-76-245-81106-000-001

CITY OF WICHITA, KANSAS

**BAUGHMAN COMPANY, P.A.**  
 SURVEYING & ENGINEERING  
 314/262-7271 • 330 LAURA • WICHITA, KANSAS 67211