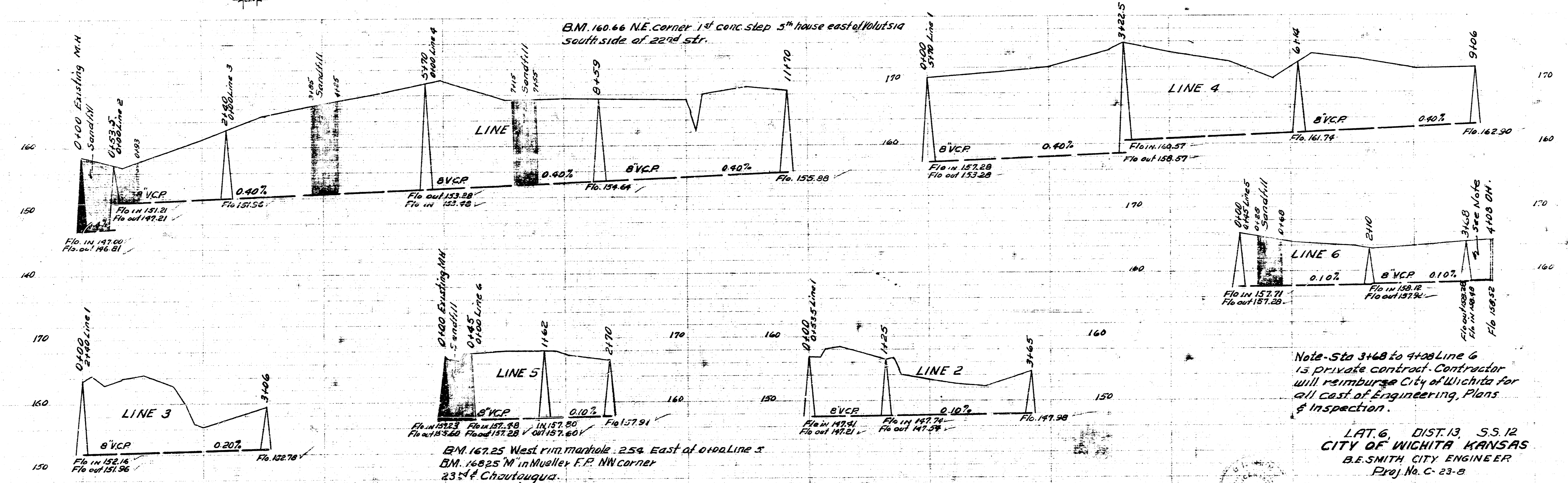
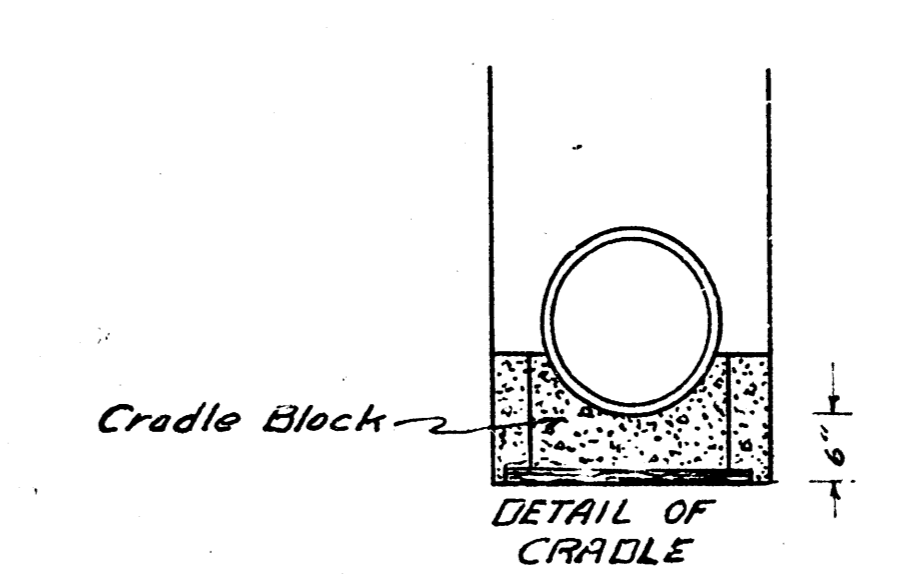
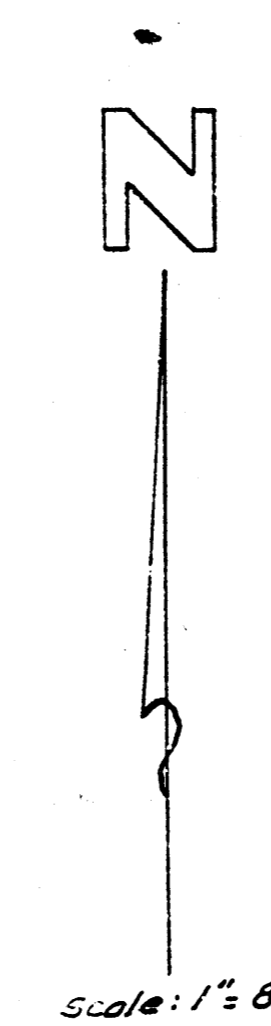
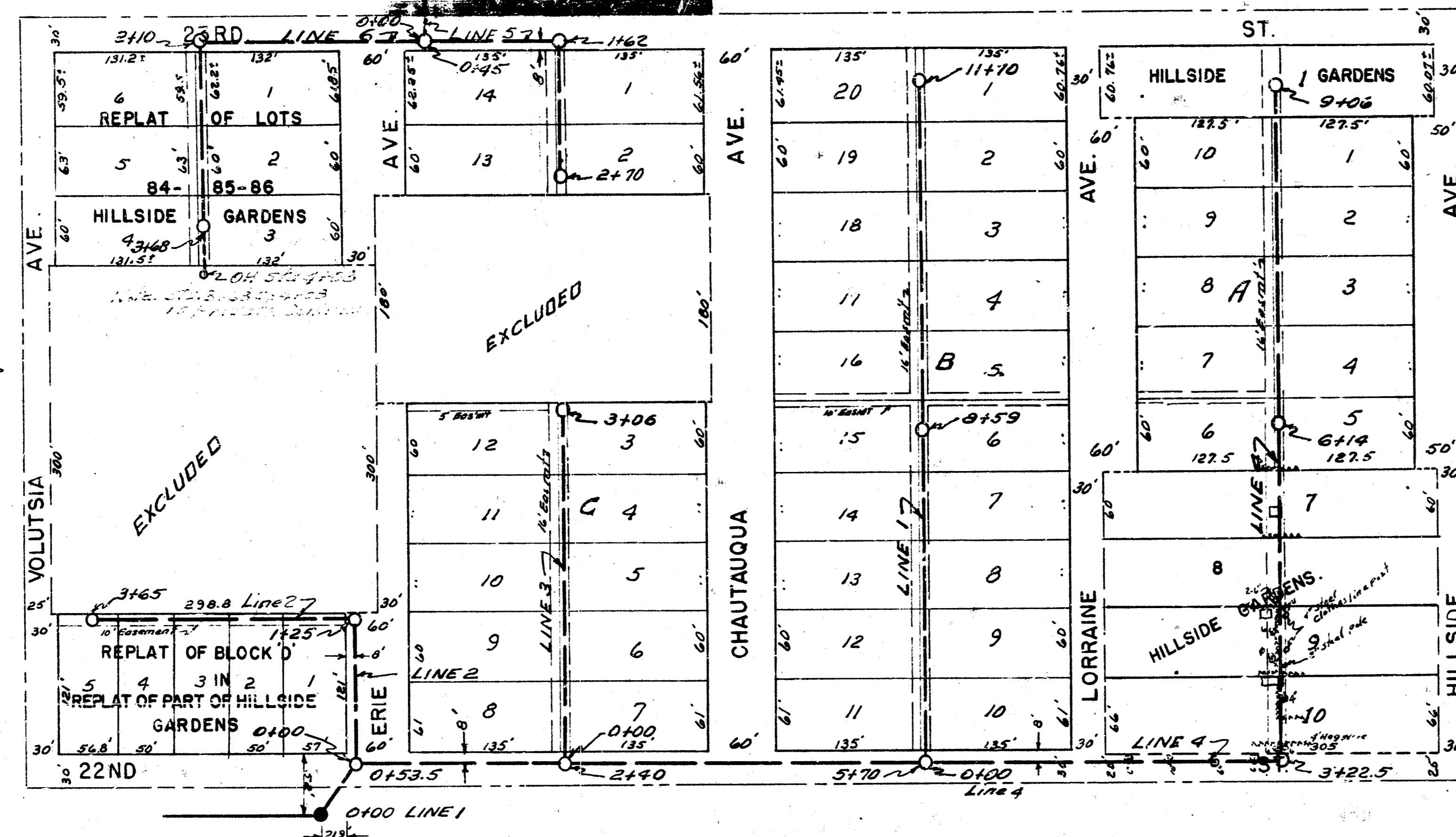


REPLAT OF PART OF HILLSIDE GARDENS WICHITA KANSAS.



Note - Sta 3468 to 4408 Line 6 is private contract. Contractor will reimburse City of Wichita for all cost of Engineering, Plans & Inspection.

LAT. 6, DIST. 13, S.S. 12
 CITY OF WICHITA KANSAS
 B.E. SMITH CITY ENGINEER
 Proj. No. C-23-8

4-23-53
 Drawn by McClain
 Checked by G. W. M. 24

