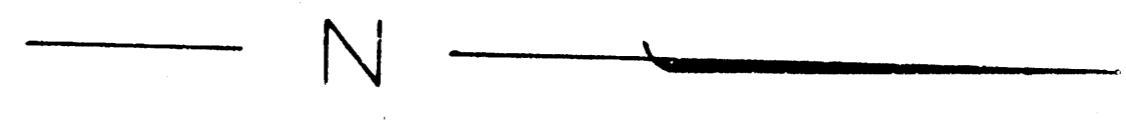
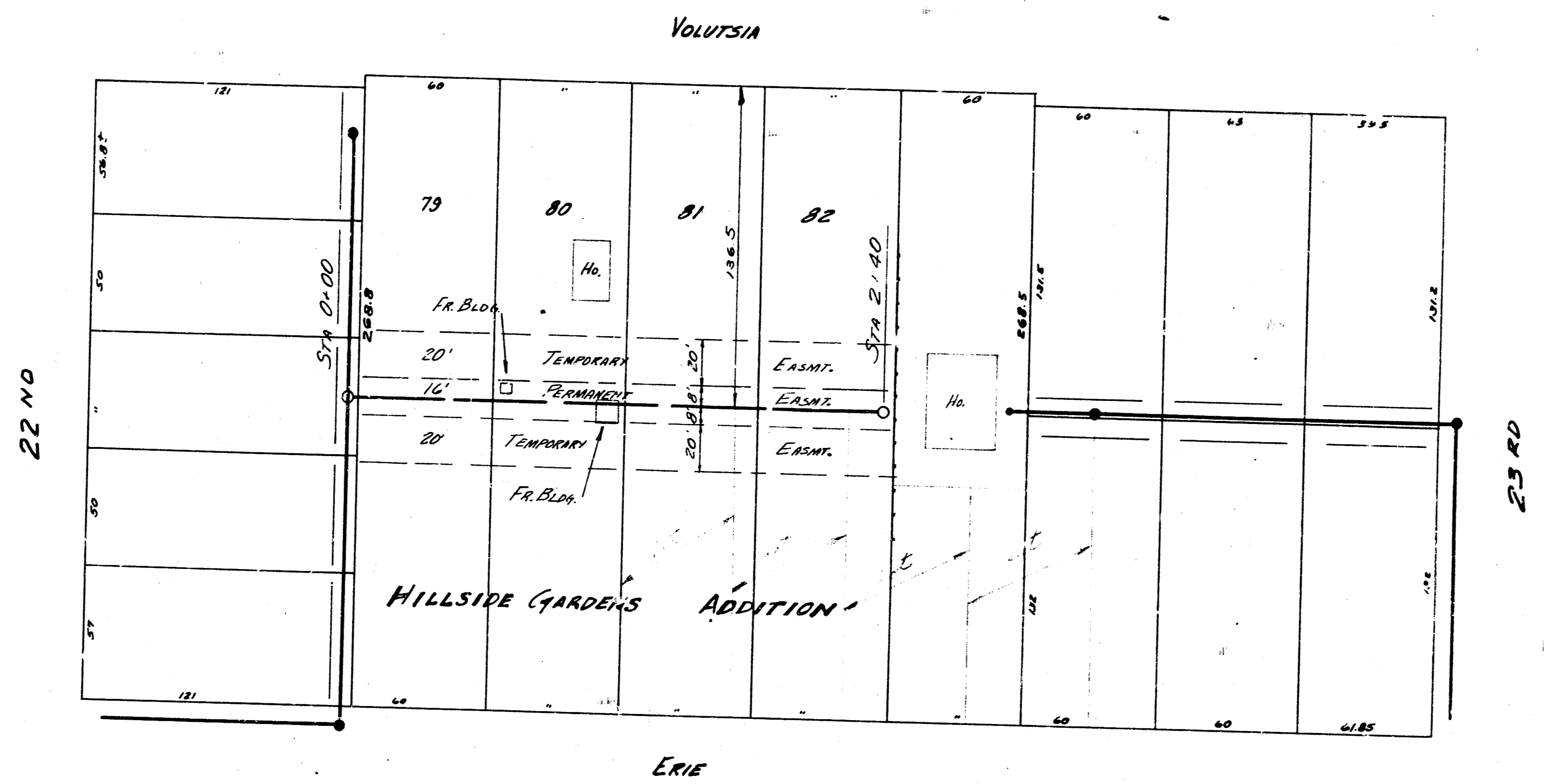
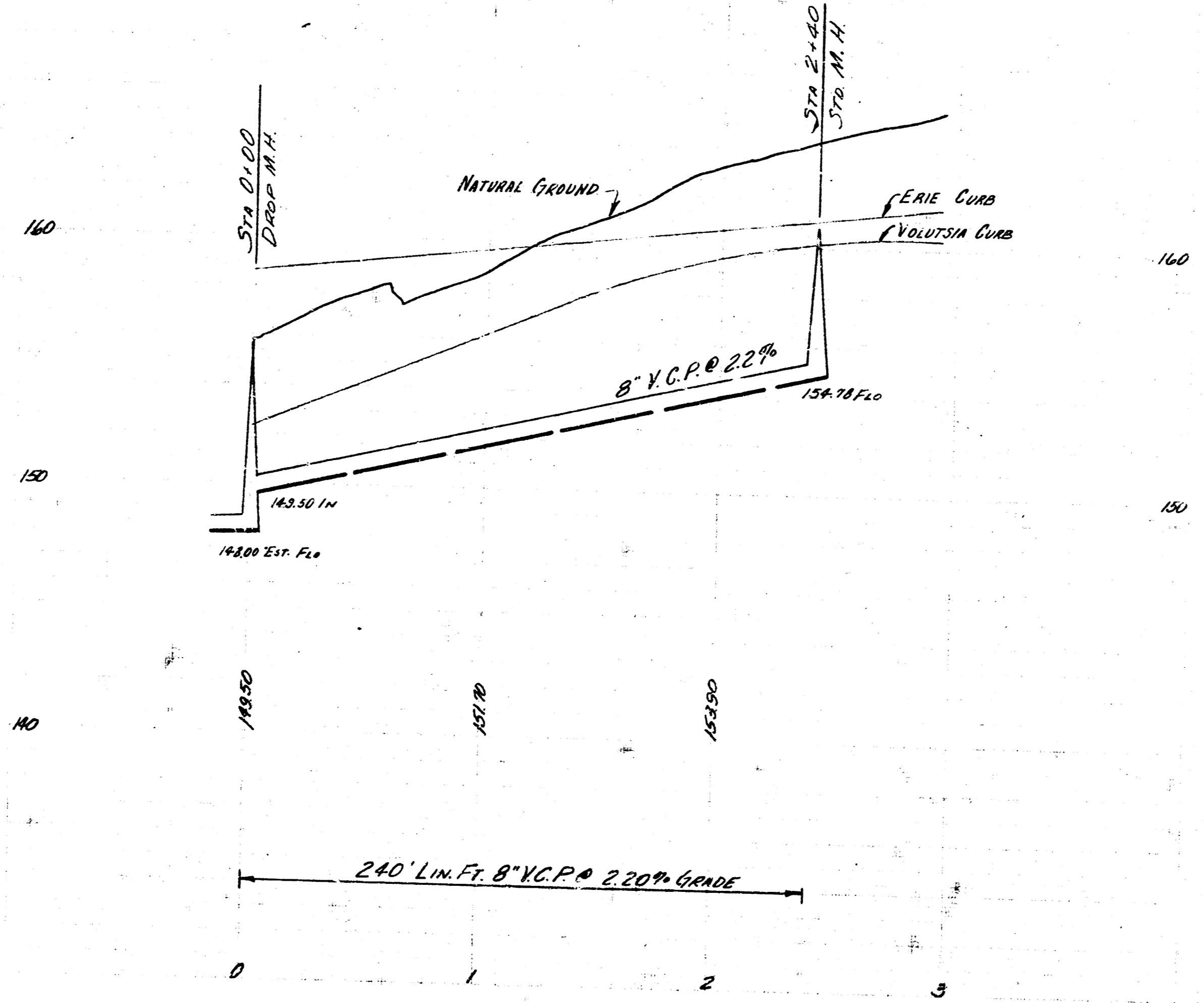


Surveyor C. Mills Noted on CHM 82  
 Approved by Sellers  
 G. W. H. D. S. M. 1855

B.M. 14066 N.E. Cor. 1st Cong. Strip 5th Ho. E. of Volusia S.S. 22nd



PLAN SCALE 1" = 40'  
 PROFILE SCALE 1" = 40' HOR 1" = 4' VERT.



LAT. 9 DIST. 13 S.S. 12  
 CITY OF WICHITA  
 B.E. SMITH CITY ENGINEER  
 1955 PROJ. NO. C25-50