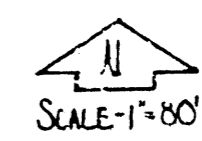
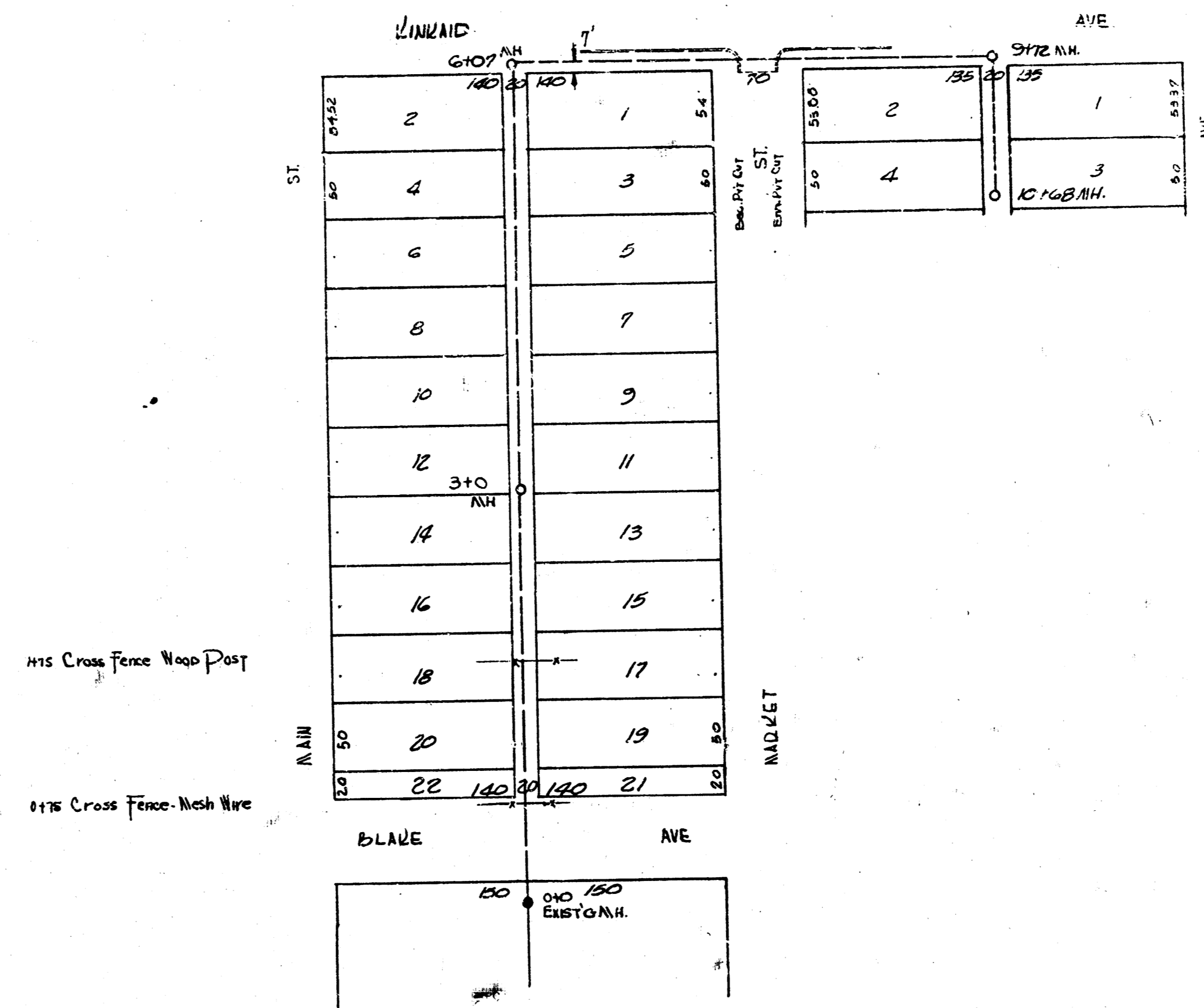
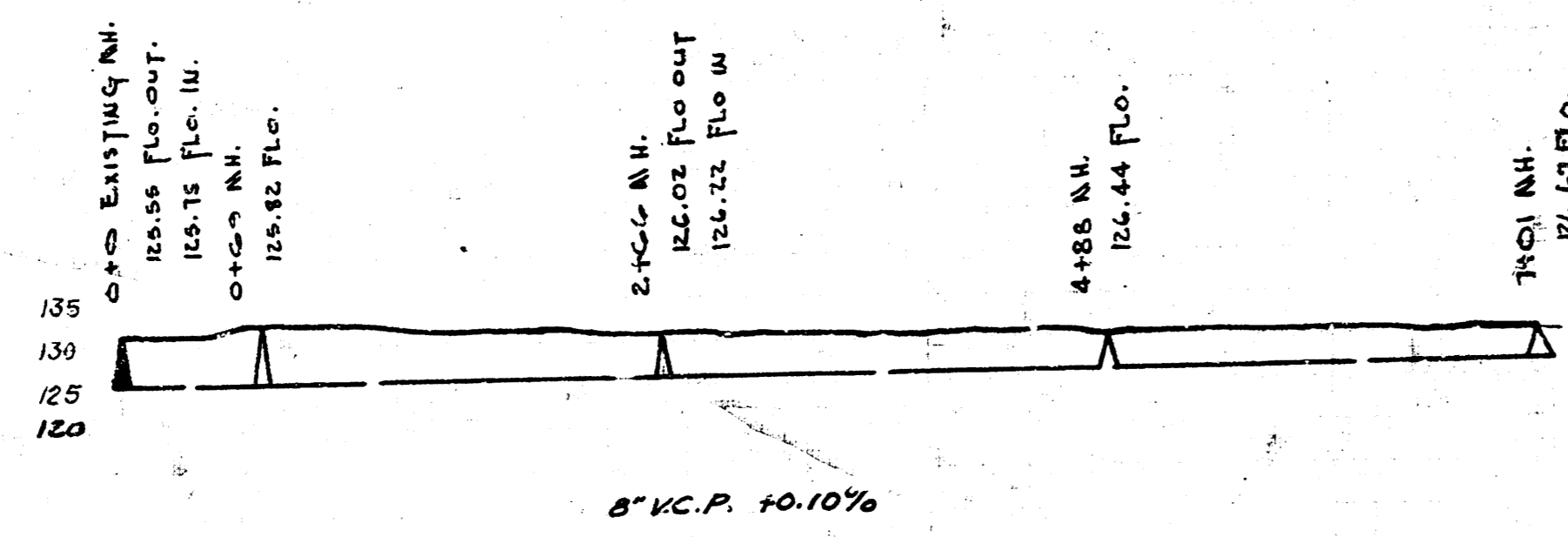


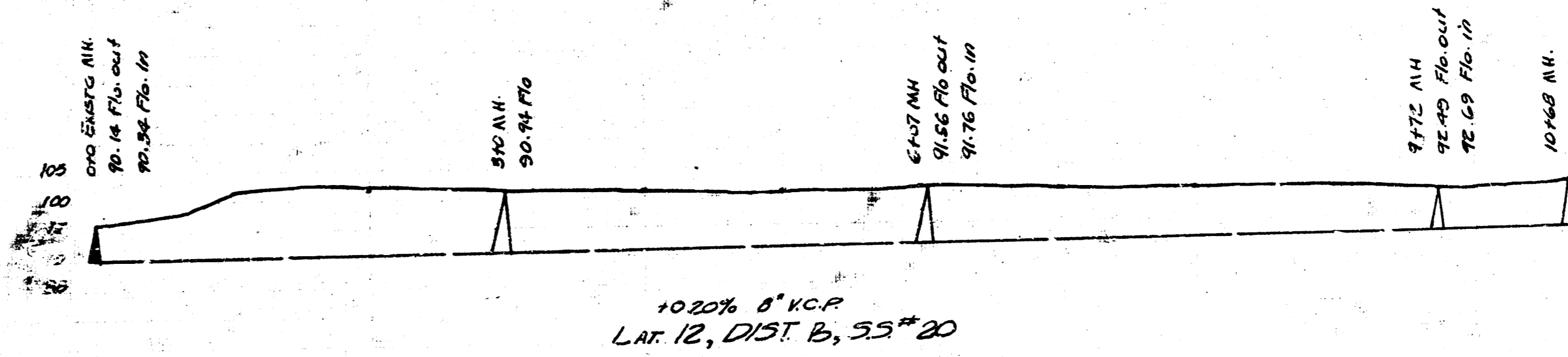
B.M. 11725 Std. N.E. Cor. 17TH & Hydraulic.



B.M. 10300 Iron N.L. Unraided Main  
So. 21st N. 96.29



LAT. 16, DIST. T, SS# 12



LAT. 12, DIST. B, SS# 20  
LAT. 16, DIST. T, SS# 12  
CITY OF WICHITA, KANSAS  
L. K. WHITE CITY ENGINEER  
1940