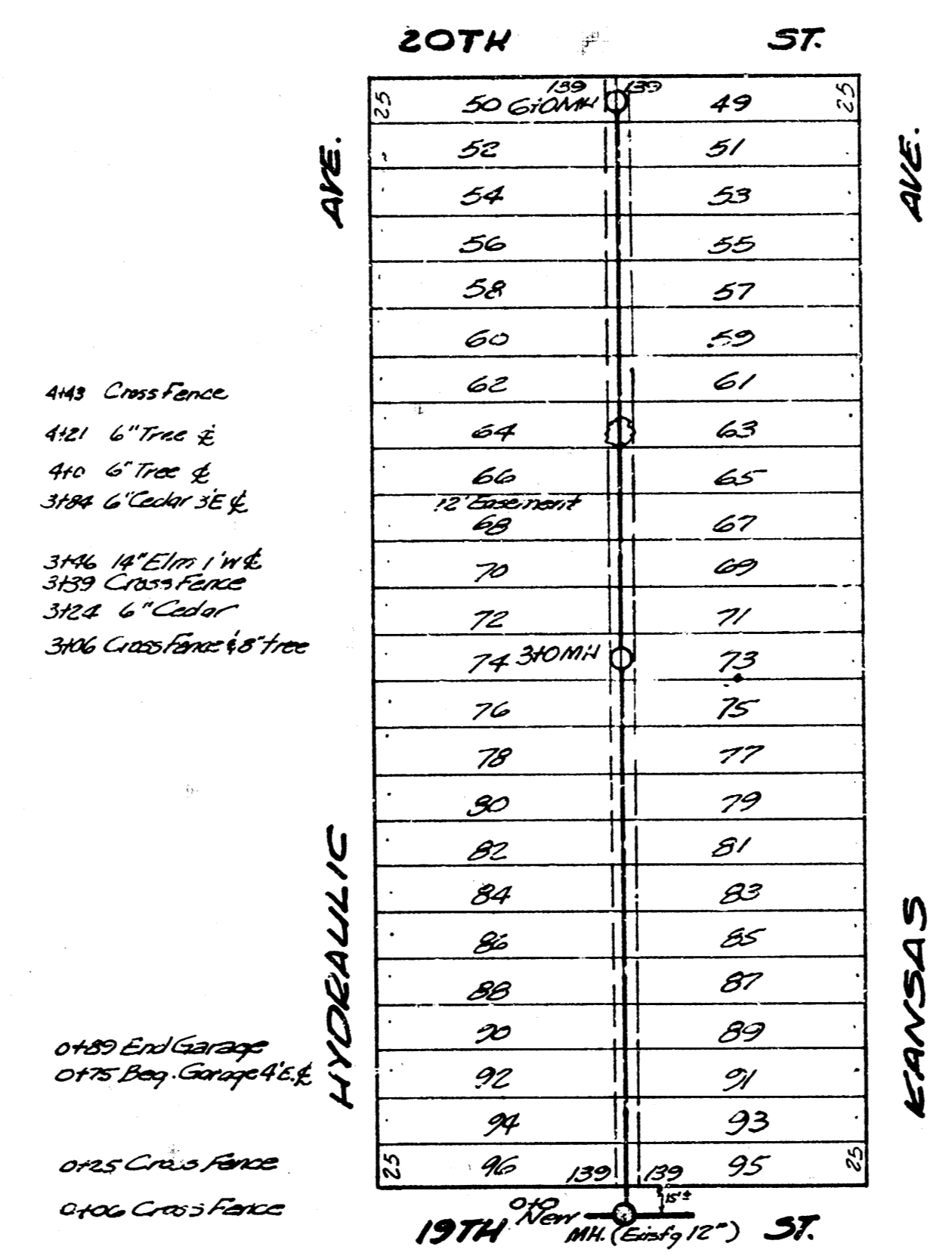


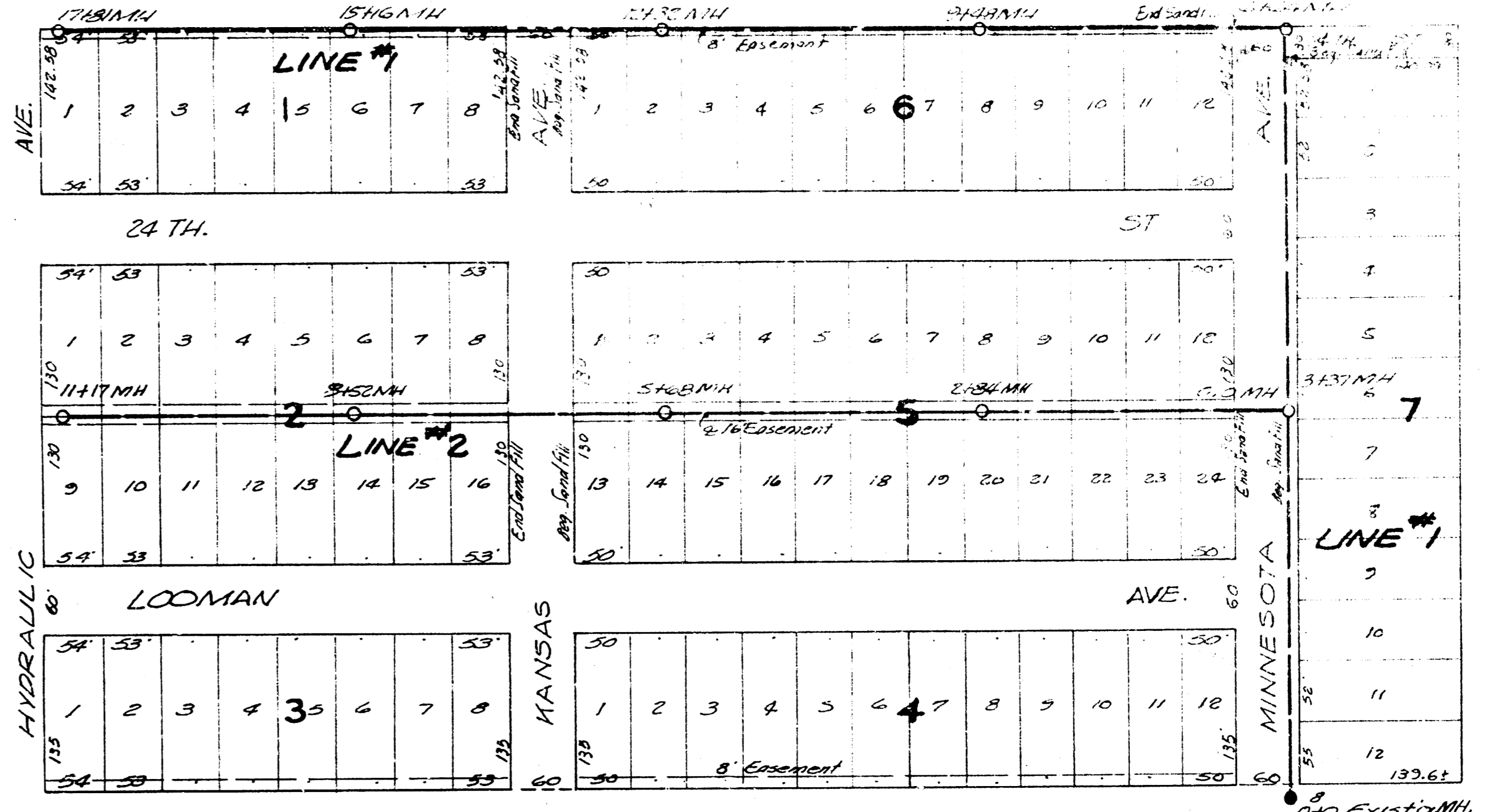
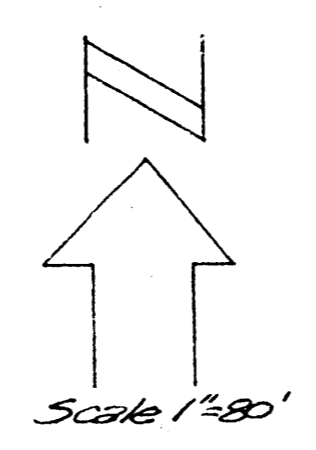
SKINNER ST.
LAT. 9, DIST. AS, SS#12

BM. 99.33' G" IN GLOBE S END WEST CURB Spruce & Funston



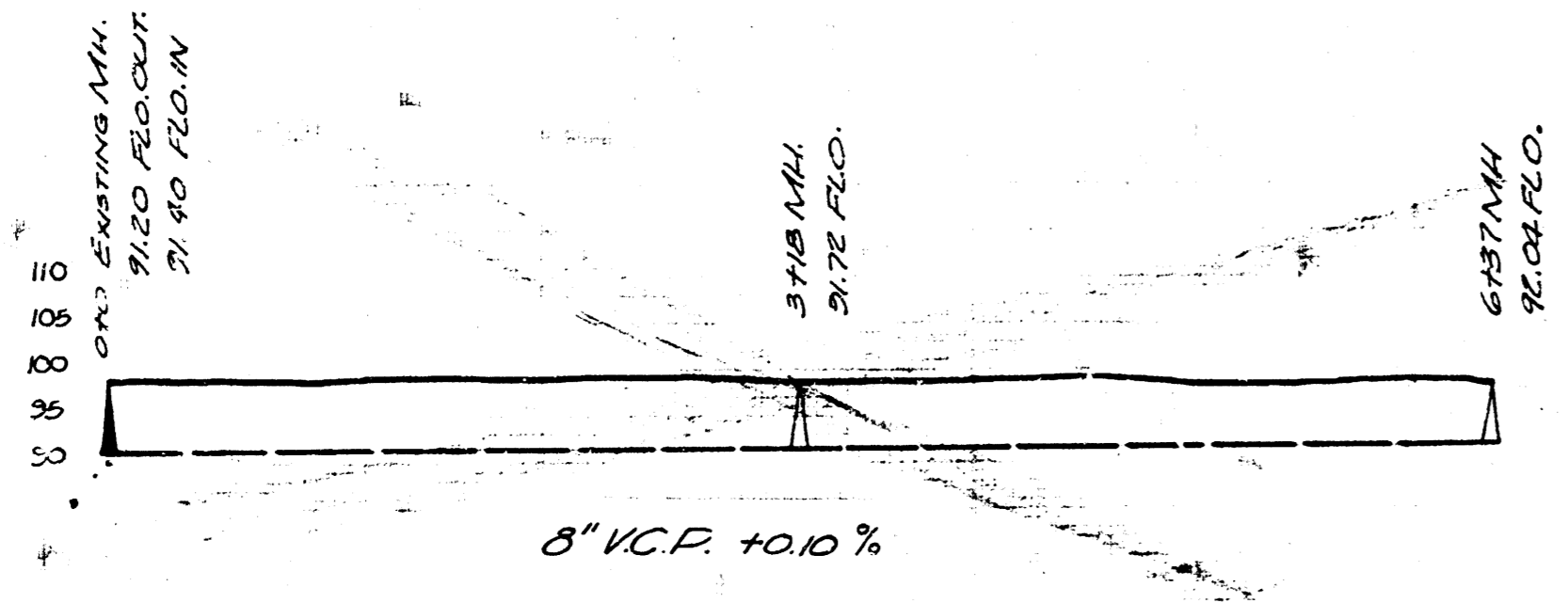
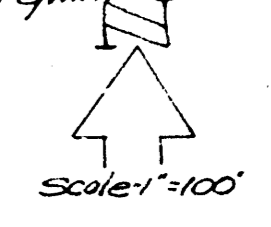
LAT. 19, DIST. T, SS#12

BM. 120.23 No. Rim of So. Spindle 19th & Hydraulic

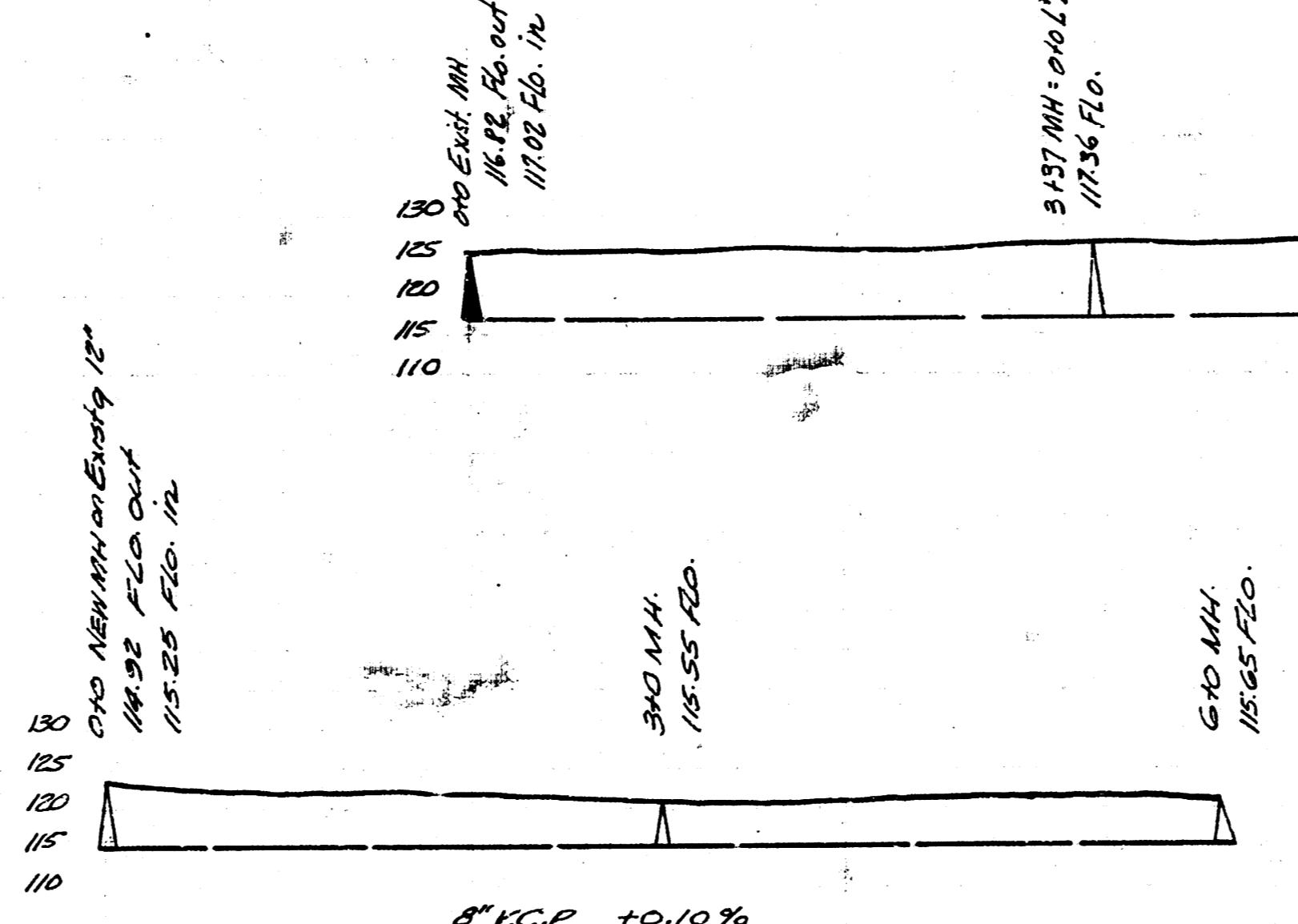


LAT. 18, DIST. T, SS#12

BM. 124.46' G" in Globe End of cb. East Side Minnesota N.L. Milliar Odd.

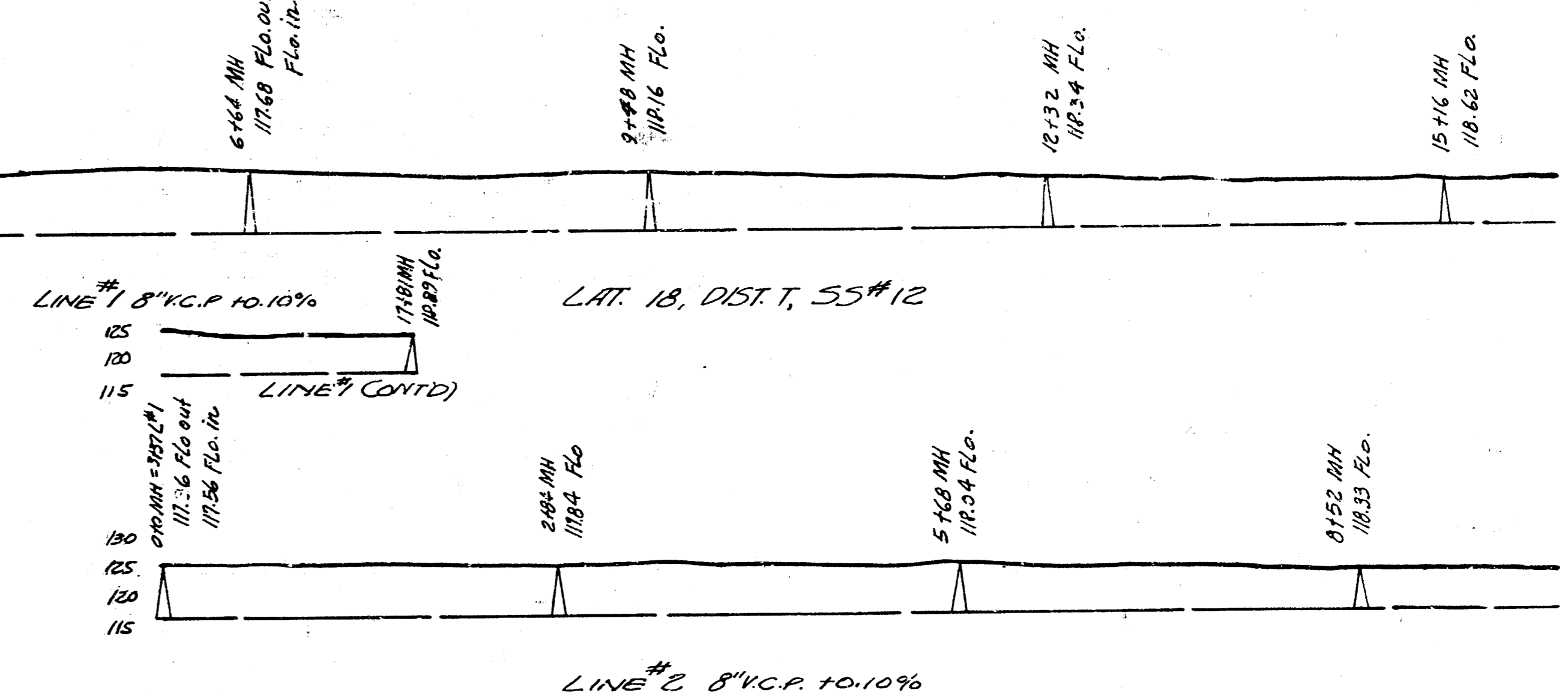


8" V.C.P. +10%



8" V.C.P. +10%

Lat. 19, Dist T, SS#12



LINE #2 8" V.C.P. +10%

LAT. 18, DIST. T, SS#12
LAT. 19, DIST. T, SS#12
LAT. 9, DIST. AS, SS#12

CITY OF WICHITA, KANSAS
L.K. WHITE - CITY ENGINEER
DATE 1-6-49 PROJ. NO. C28-45