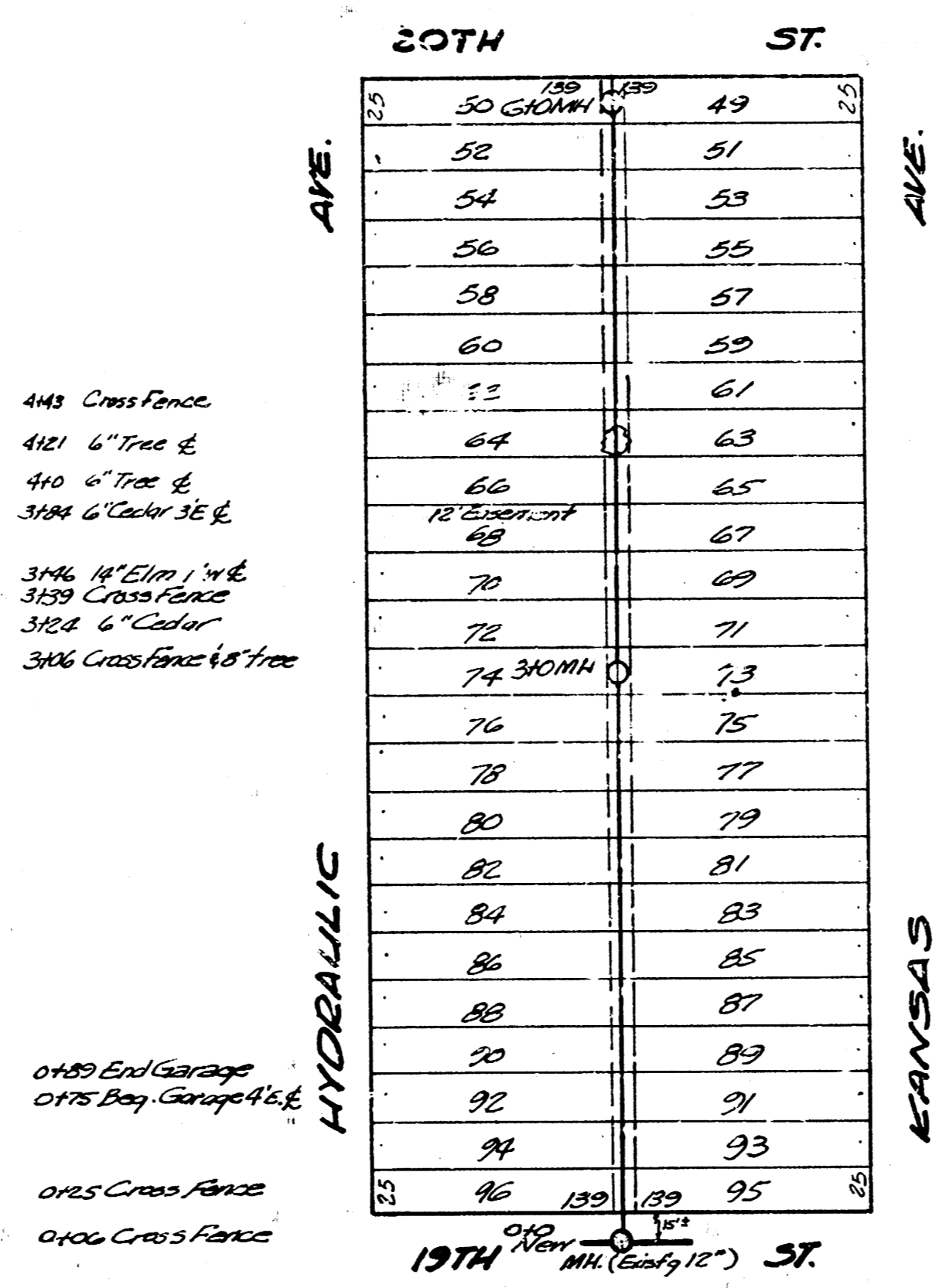
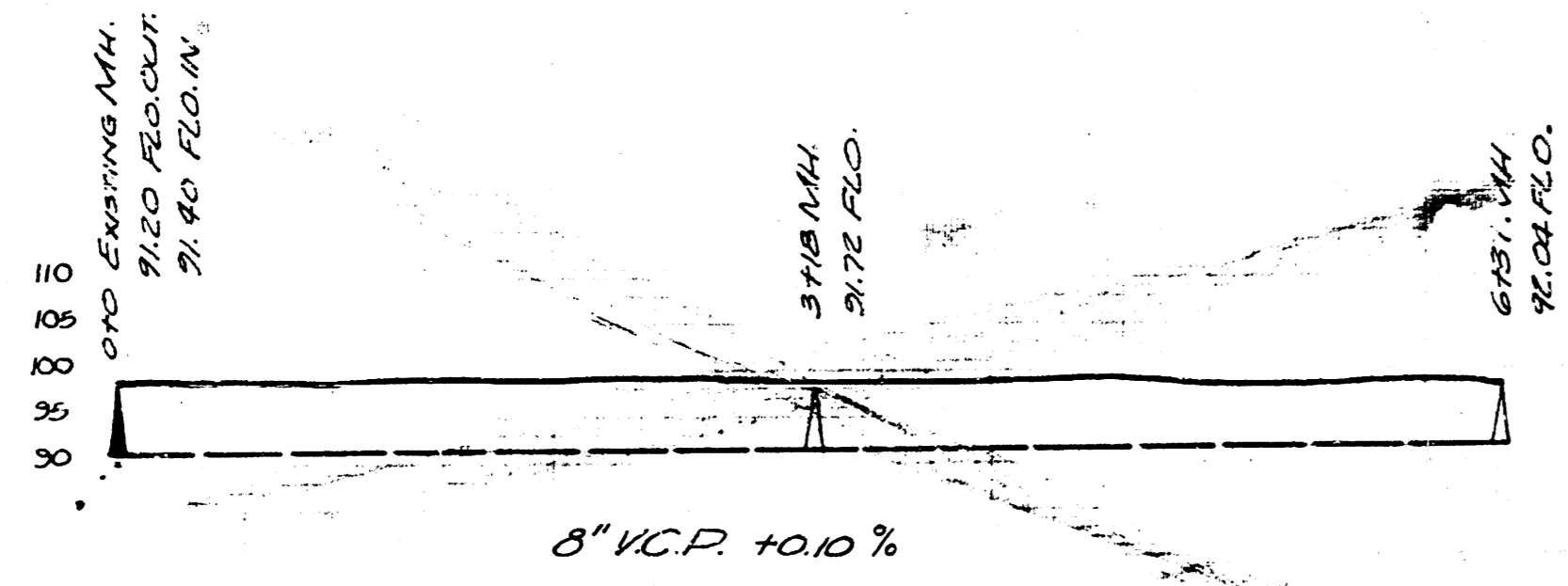


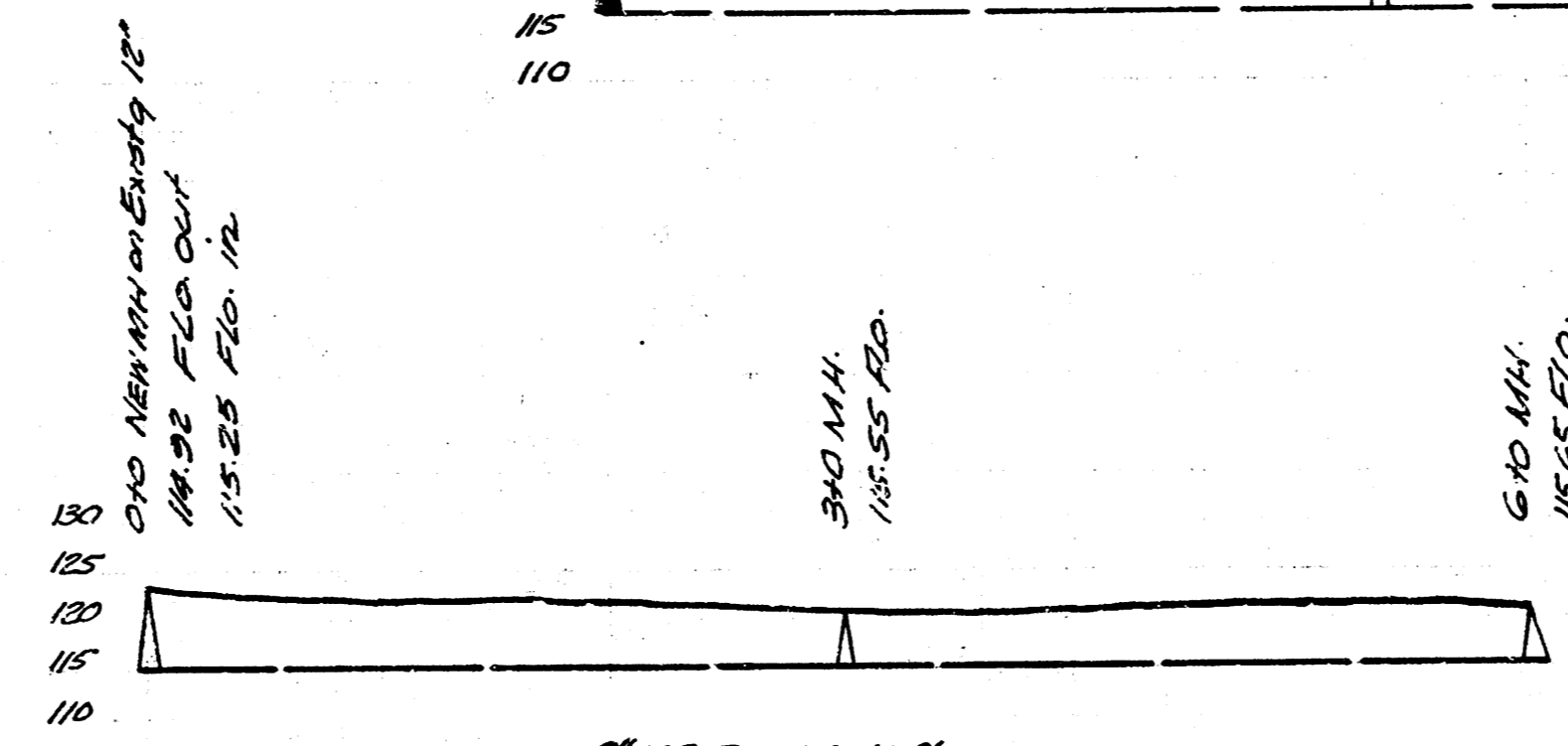
LAT. 9, DIST. AS, SS#12

BM. 99.33'± IN GLOBE S. END WEST CURB Spruce & Funston

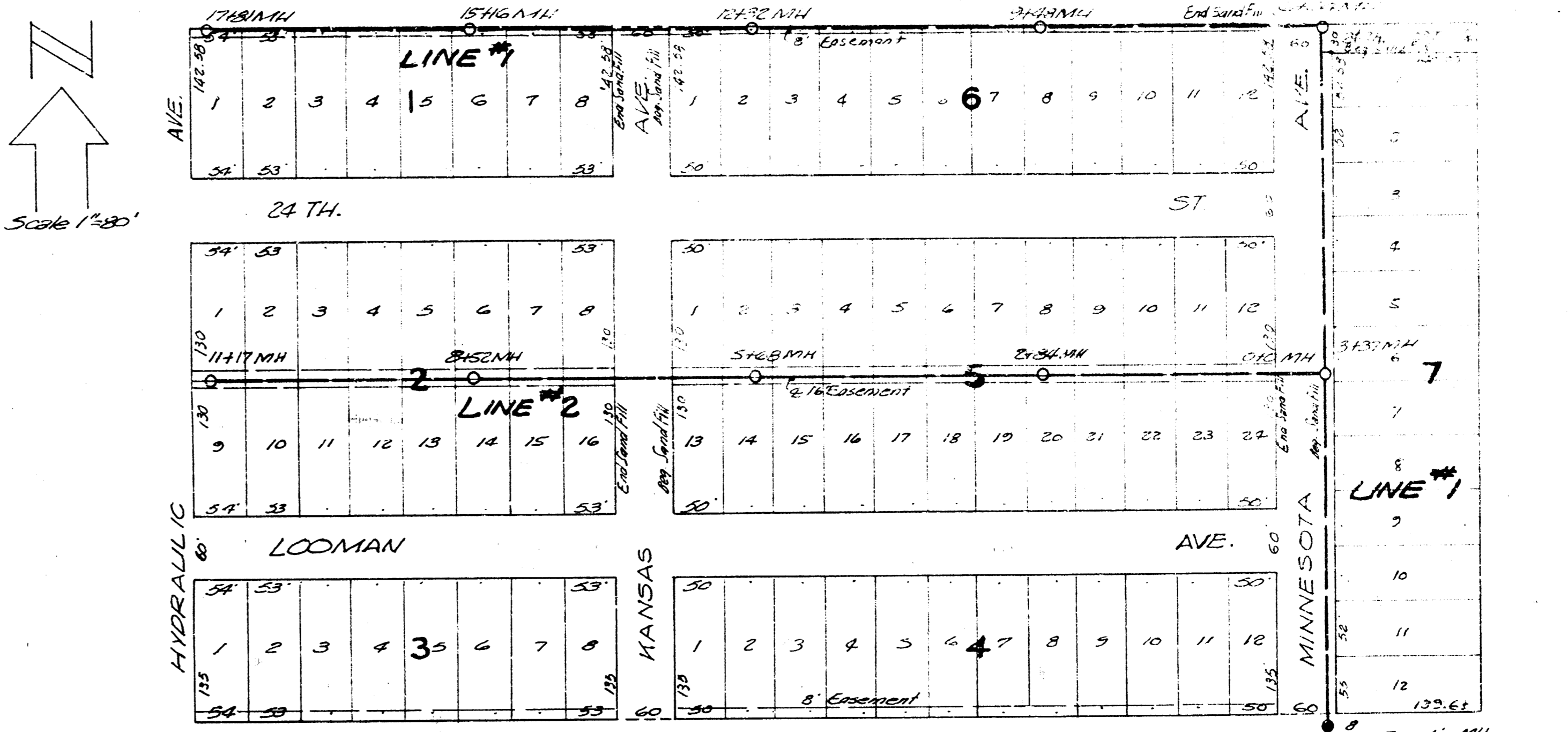


LAT. 19, DIST. T, SS#12

BM. 120.23 No. Cur. of So. Spindle 19th of Hydraulic

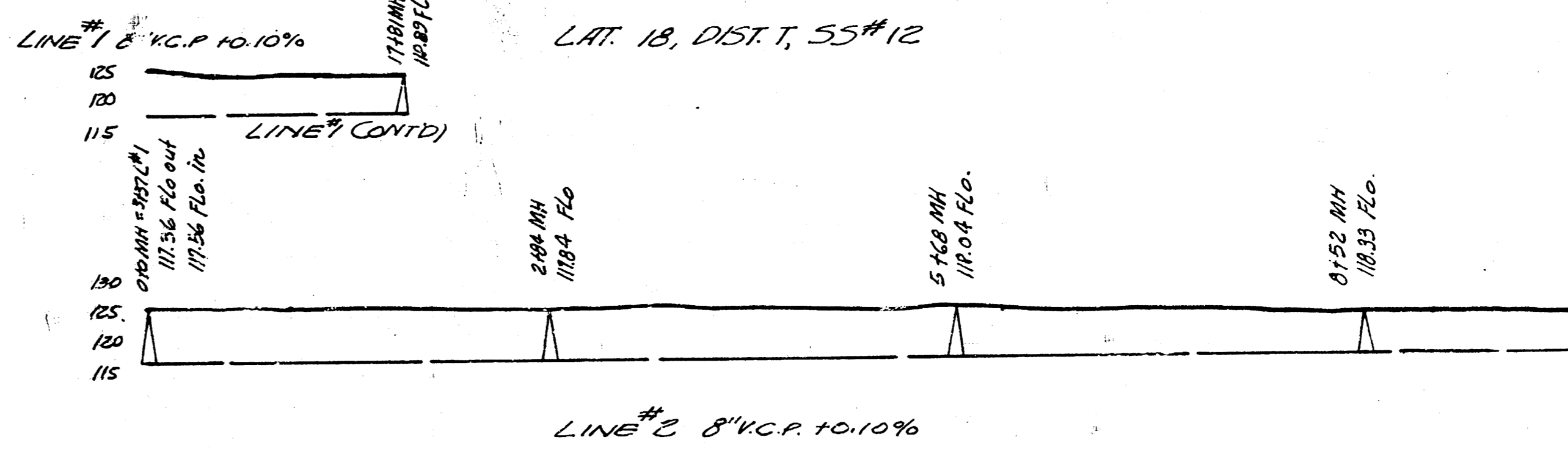


LAT. 19, DIST. T, SS#12



LAT. 18, DIST. T, SS#12

BM. 124.46'± in Globe End of cb. East Side Minnesota N.L. Milliar Cdd.



LAT. 18, DIST. T, SS#12  
 LAT. 19, DIST. T, SS#12  
 LAT. 9, DIST. AS, SS#12

CITY OF WICHITA, KANSAS  
 L.K. WHITE CITY ENGINEER  
 DATE 1-6-09 PROJ. NO. C29-05