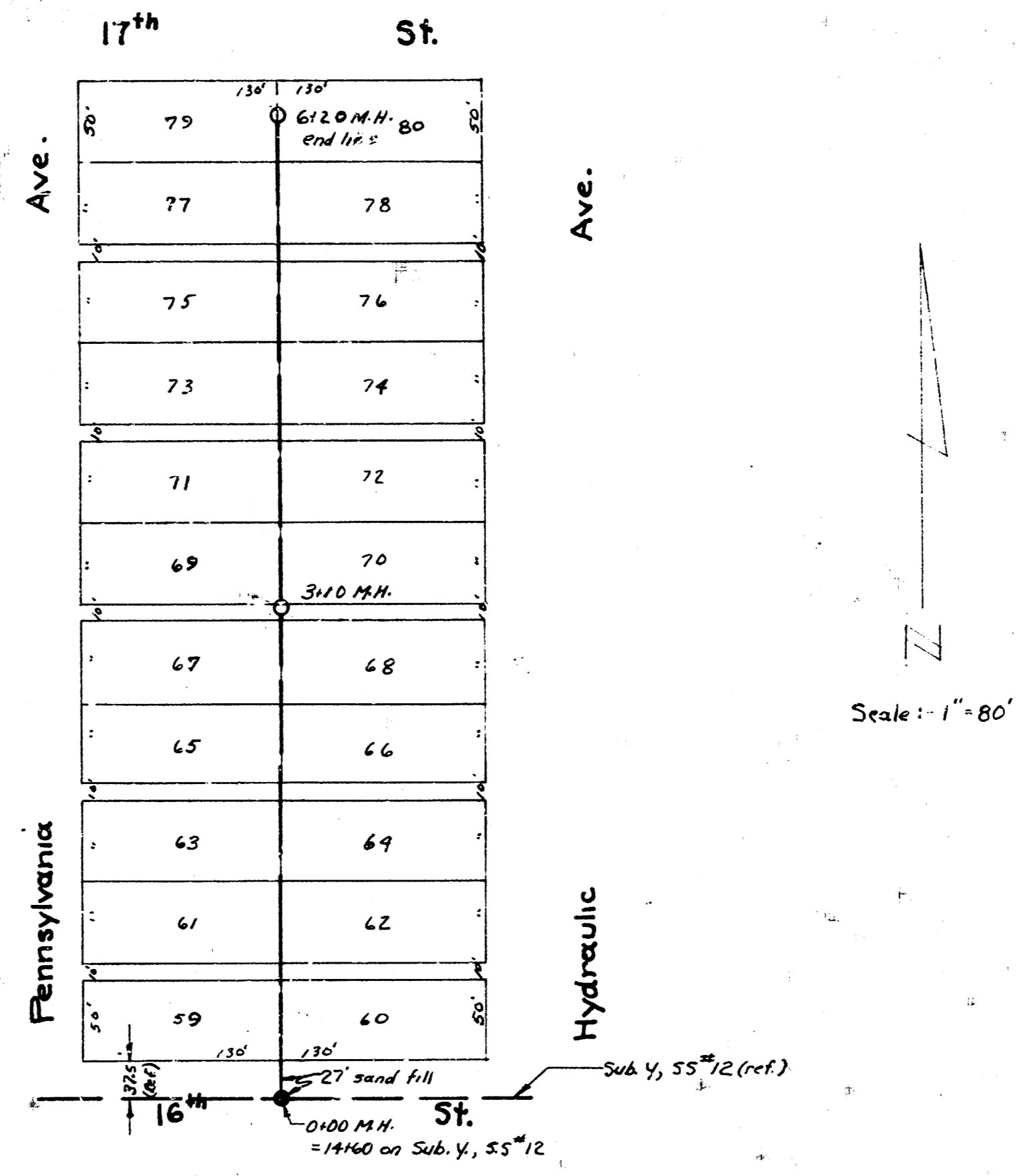
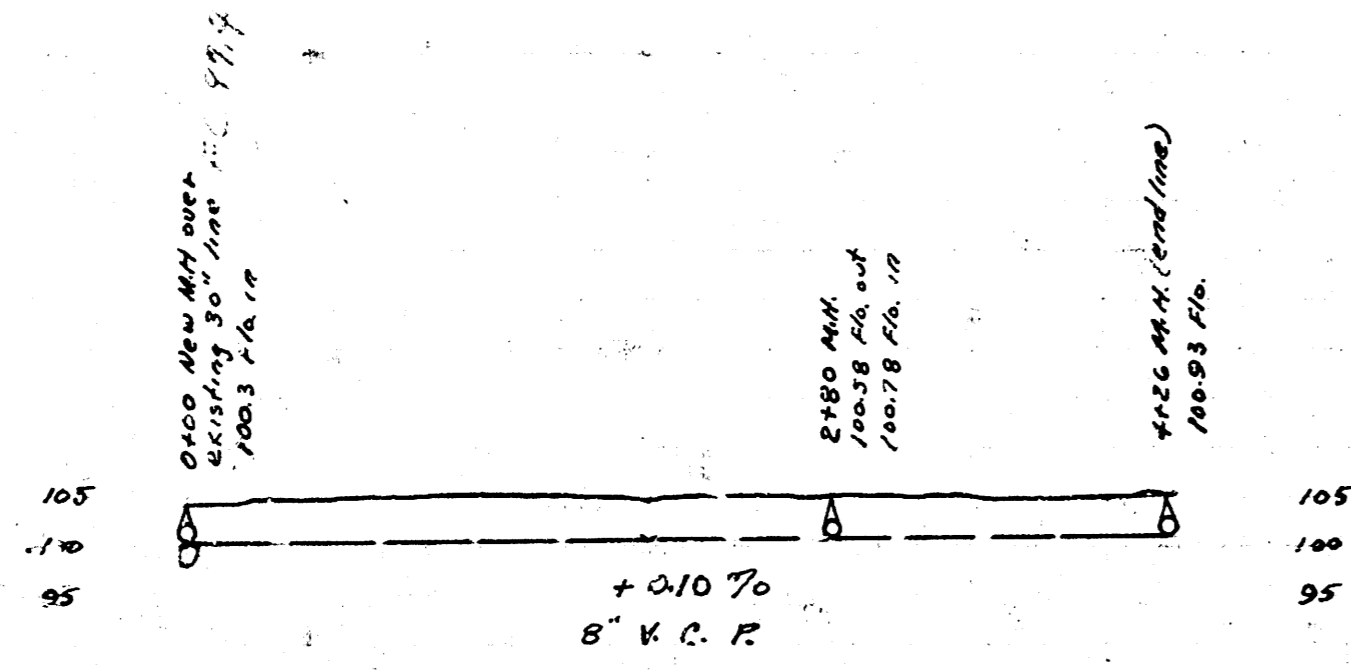
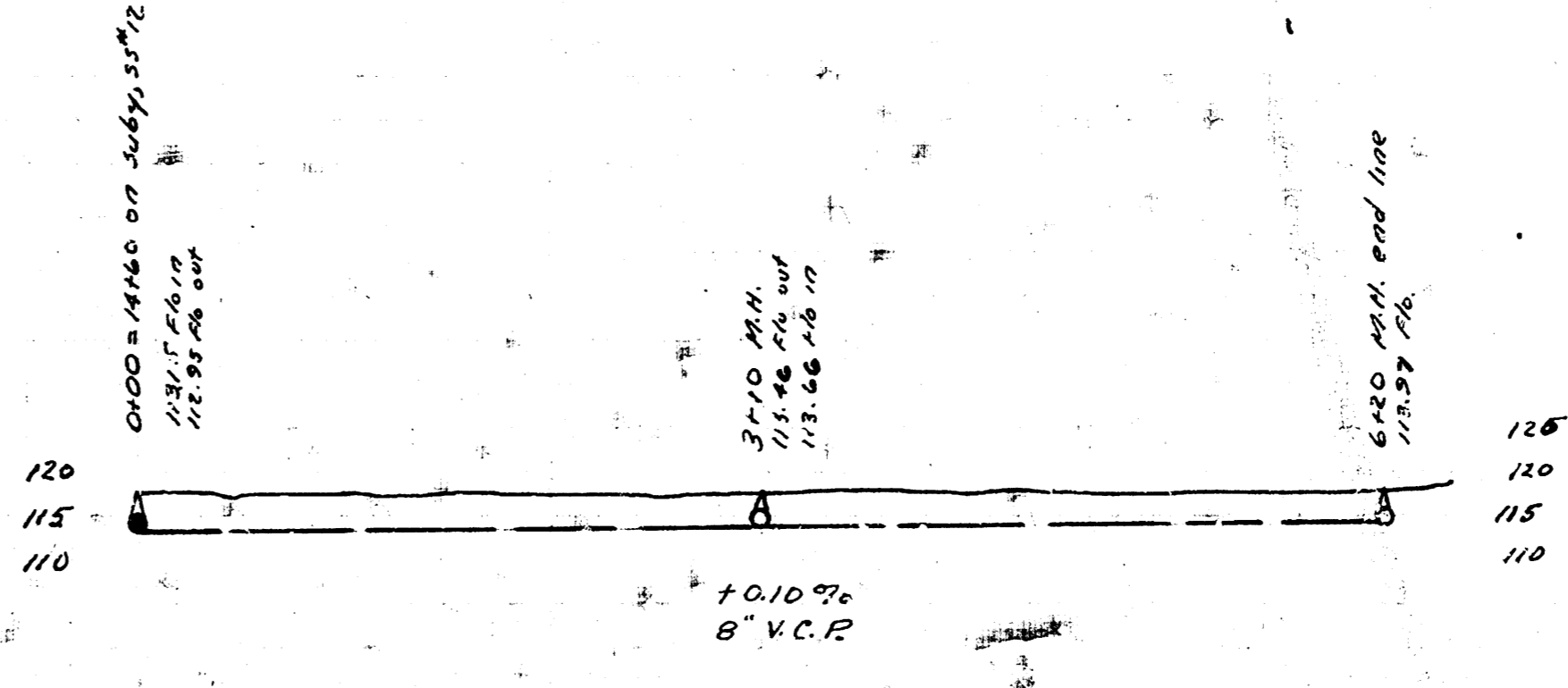


E.M. 10232 ~ Standard, S.W. Seneca & Whelan
 E.M. 10202 ~ " on S. end 4' radius W. cb. Seneca, N.L. Merton.
 E.M. 10124 ~ " S. cb. Estner, H.L. Seneca.
 E.M. 10111 ~ " S. coping near N.E. cor. Bldg., S.W. Seneca & Dora.



E.M. 11641 ~ N. rim of thimble 16" of Hydraulic.



Lot 23, Dist. T, S.S. No. 12
 Lot M, S.S. No. 8
 City of Wichita, Kansas
 L. K. White - City Engineer
 Nov. 1950 Private Job
 Proj. C-20-30