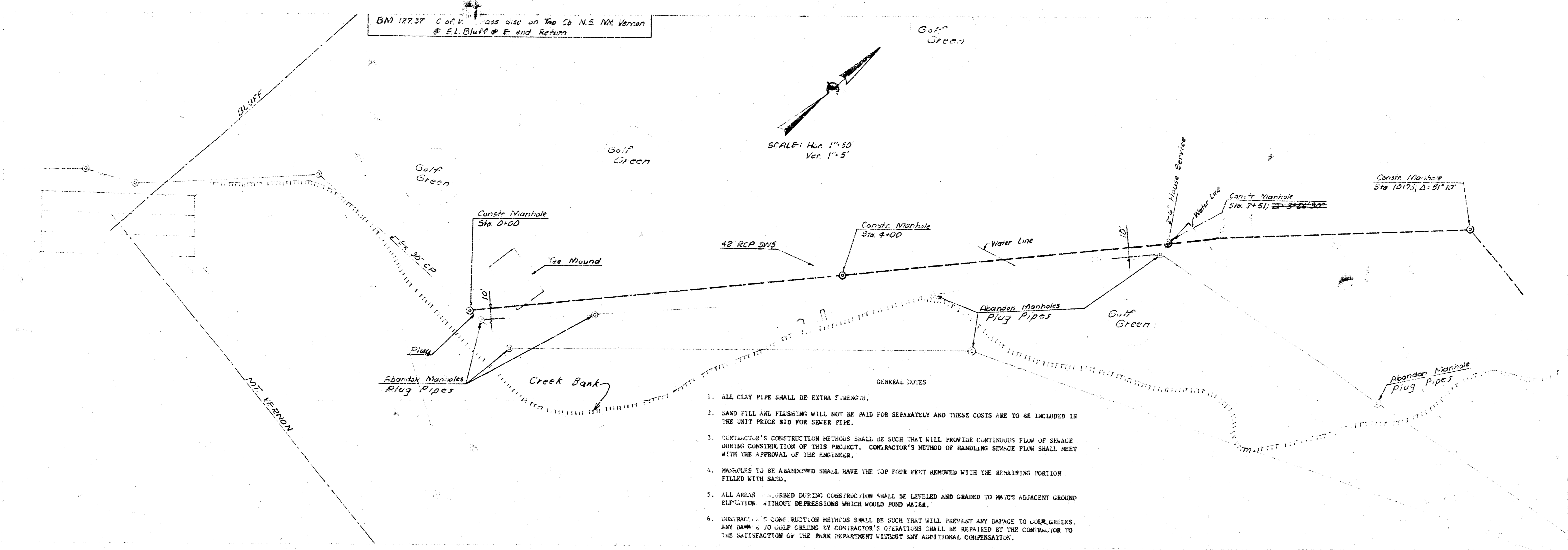
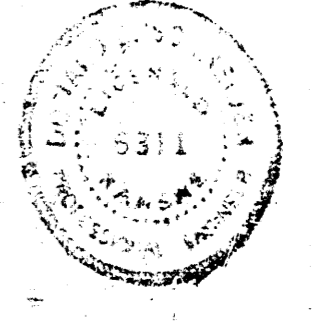
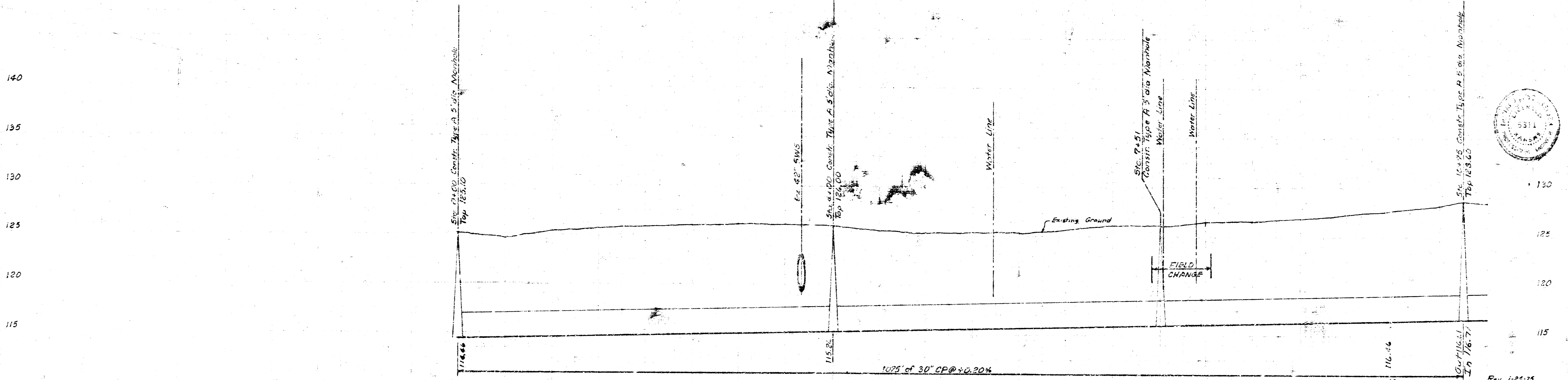


20.3 115

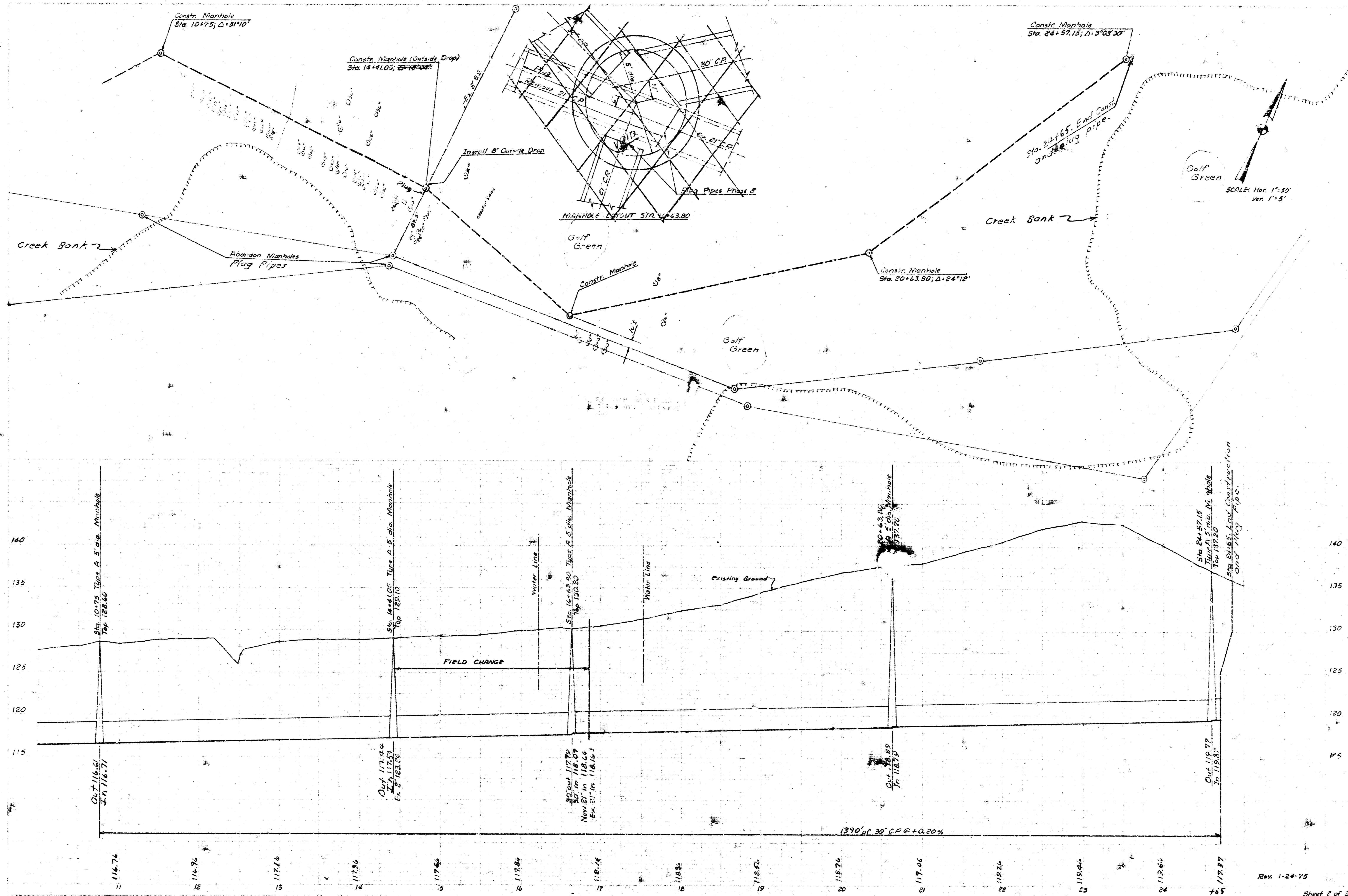


- GENERAL NOTES
1. ALL CLAY PIPE SHALL BE EXTRA STRENGTH.
 2. SAND FILL AND FLASHING WILL NOT BE PAID FOR SEPARATELY AND THESE COSTS ARE TO BE INCLUDED IN THE UNIT PRICE BID FOR SEWER PIPE.
 3. CONTRACTOR'S CONSTRUCTION METHODS SHALL BE SUCH THAT WILL PROVIDE CONTINUOUS FLOW OF SEWAGE DURING CONSTRUCTION OF THIS PROJECT. CONTRACTOR'S METHOD OF HANDLING SEWAGE FLOW SHALL MEET WITH THE APPROVAL OF THE ENGINEER.
 4. MANHOLES TO BE ABANDONED SHALL HAVE THE TOP FOUR FEET REMOVED WITH THE REMAINING PORTION FILLED WITH SAND.
 5. ALL AREAS SURROUND DURING CONSTRUCTION SHALL BE LEVELLED AND GRADED TO MATCH ADJACENT GROUND ELEVATION WITHOUT DEPRESSIONS WHICH WOULD FORD WATER.
 6. CONTRACTOR'S CONSTRUCTION METHODS SHALL BE SUCH THAT WILL PREVENT ANY DAMAGE TO GOLF GREENS. ANY DAMAGE TO GOLF GREENS BY CONTRACTOR'S OPERATIONS SHALL BE REPAIRED BY THE CONTRACTOR TO THE SATISFACTION OF THE PARK DEPARTMENT WITHOUT ANY ADDITIONAL COMPENSATION.



Rev. 1-21-75
 SUPPLEMENT DRY CREEK SUBMAIN 1 &
 DRY CREEK SUBMAIN 2, SANITARY SEWER
 18, ALONG DRY CREEK FROM 230' NORTH
 OF MT. VERRON TO 500' NORTH OF MEADOWLANE
 CITY OF WICHITA, KANSAS
 R. W. LINN, CITY ENGINEER
 DATE: 12/15/74
 Project No. DSNM 574084 Sheet 1 of 3

040 115



66D 11E

B.M. 142433 City Sta on W and Right to RCB Approx
150 E of Oliver on Harry

Const. Manhole
Sta. 24+57.15; $\Delta = 3'06''30''$

Const. Manhole
Sta. 28+57.15

Remove Manhole

Const. Manhole
Sta. 32+37.15
Elev. 124.58

Water Line

Plug

Elev. 121.84

Golf Green

Golf Green

Golf Green

SCALE: Hor. 1"=50'
Ver. 1"=5'

NOTE: ALL WORK INDICATED ON THIS SHEET BETWEEN
STA. 24+65 AND STA. 32+37.15 IS NOT A PART OF
THIS PROJECT. THIS SHEET IS FURNISHED FOR INFORMATION
ONLY.

