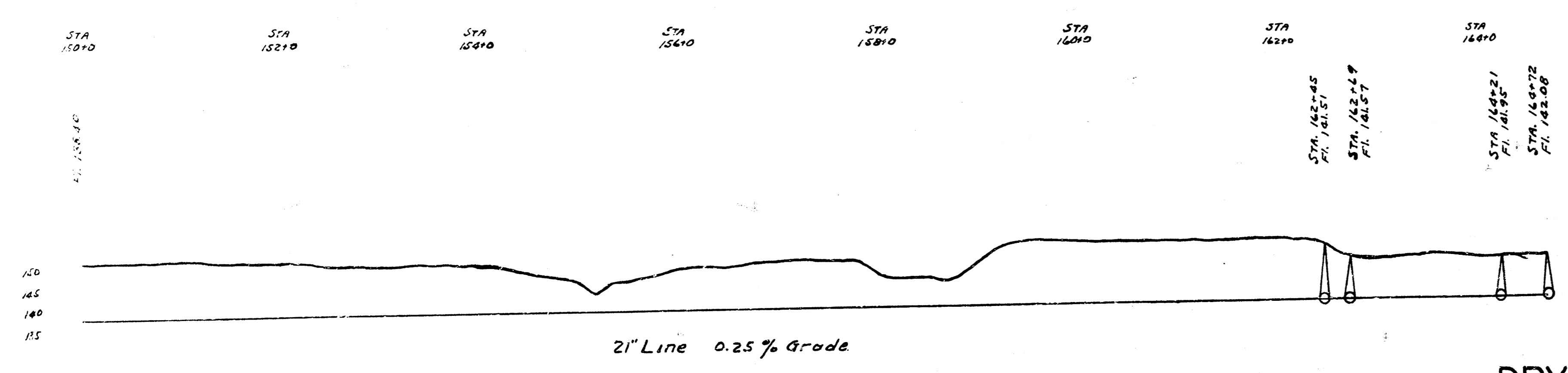
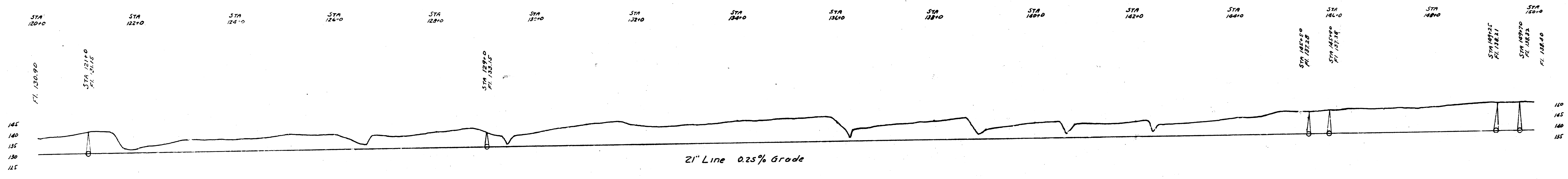
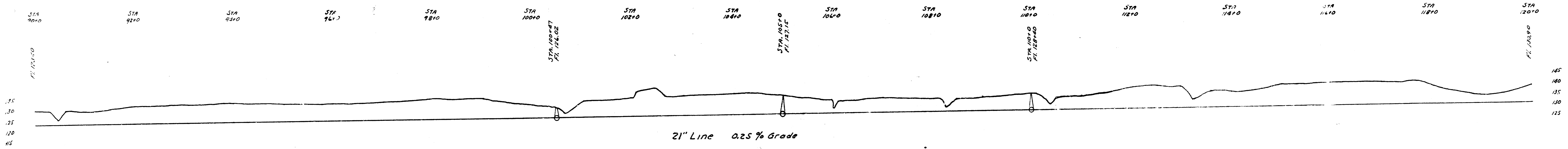


DRY CREEK SUB-MAIN
OF S.S.NO.12.
DEC. 1932.

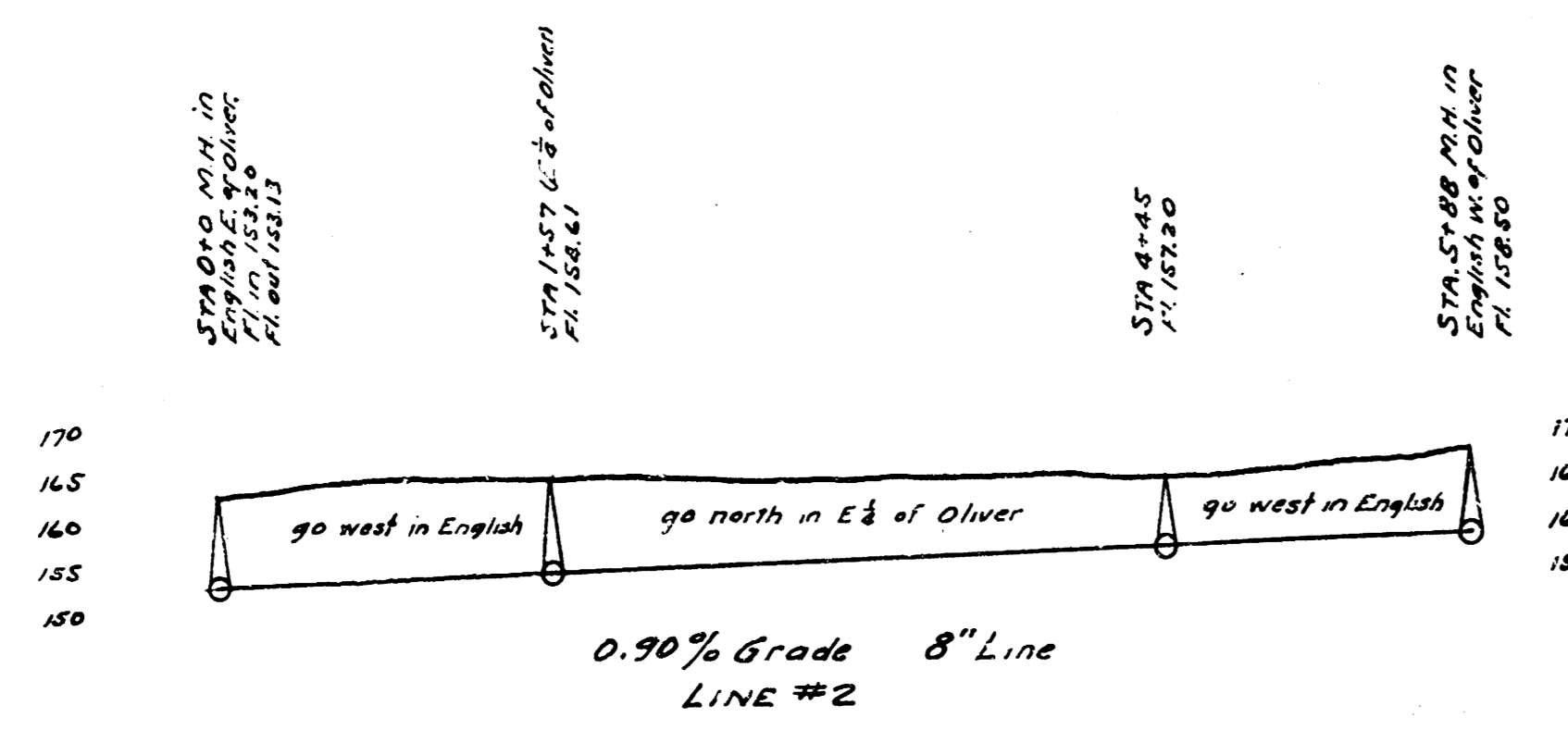
B.M. 1216 - Spike in old cottonwood tree N. of 1/2 mile N. of Franklin and in creek channel.

B.M. 1243 - nail in cottonwood tree west of Gulf Course bridge, 1/2 mile west of Millade on Franklin.

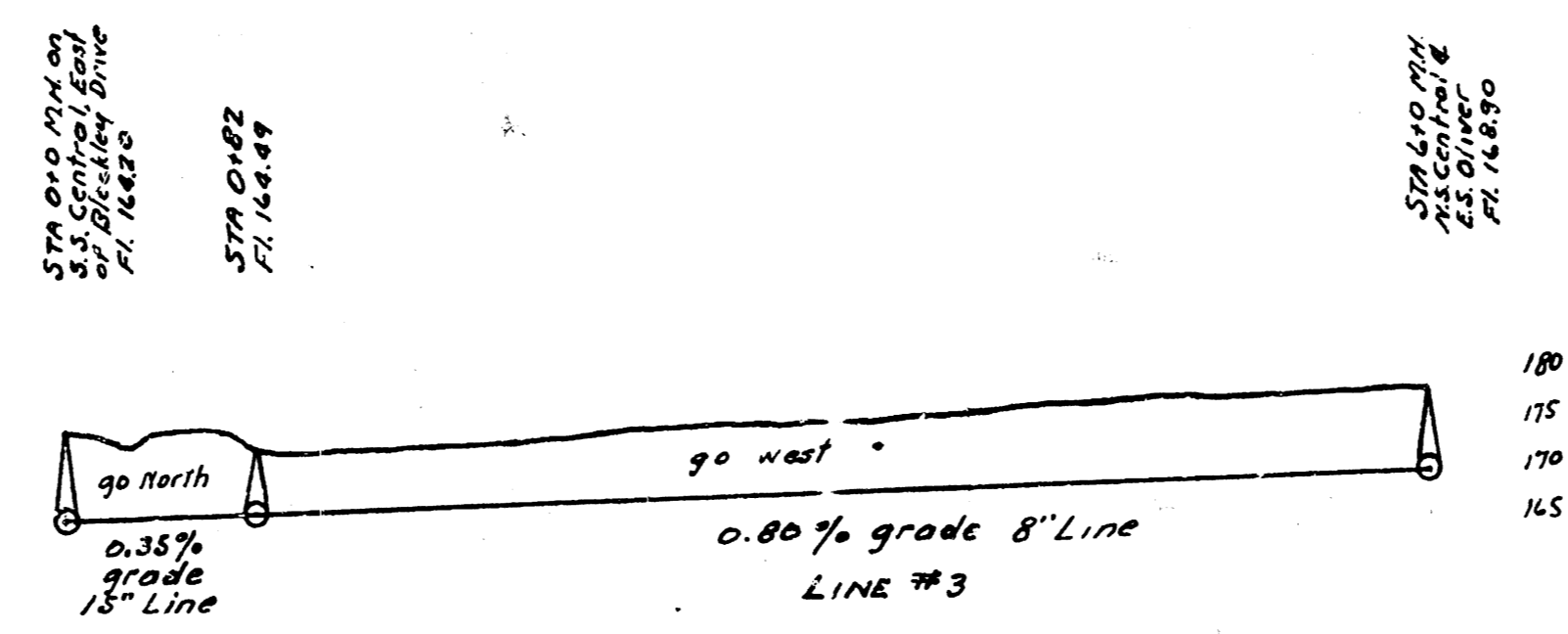
B.M. 1244 - nail in end of Willow tree @ bridge between Green & 1/2.



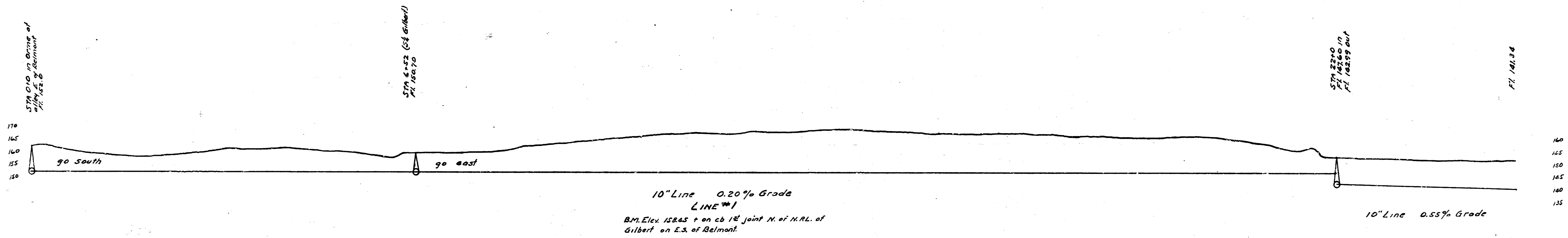
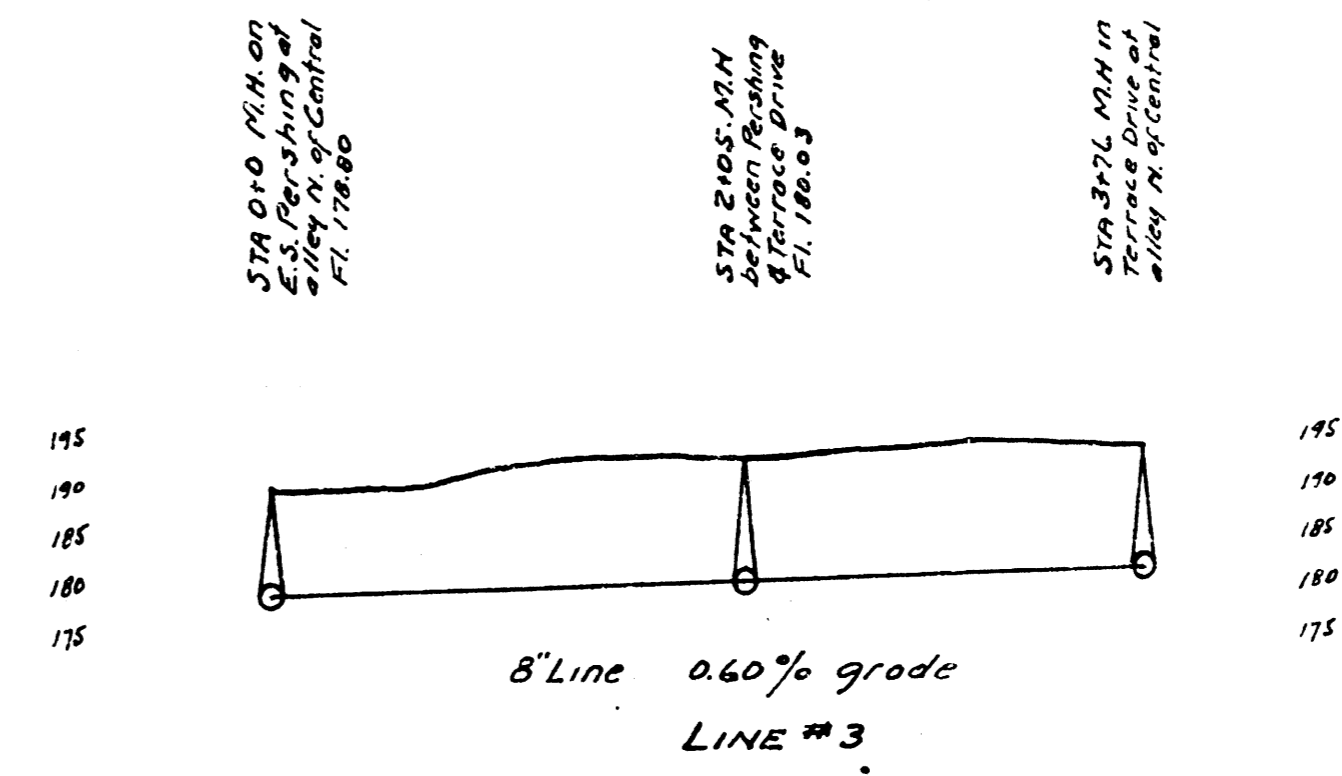
DRY CREEK SUB-MAIN
OF S.S. NO. 12.
DEC. 1932



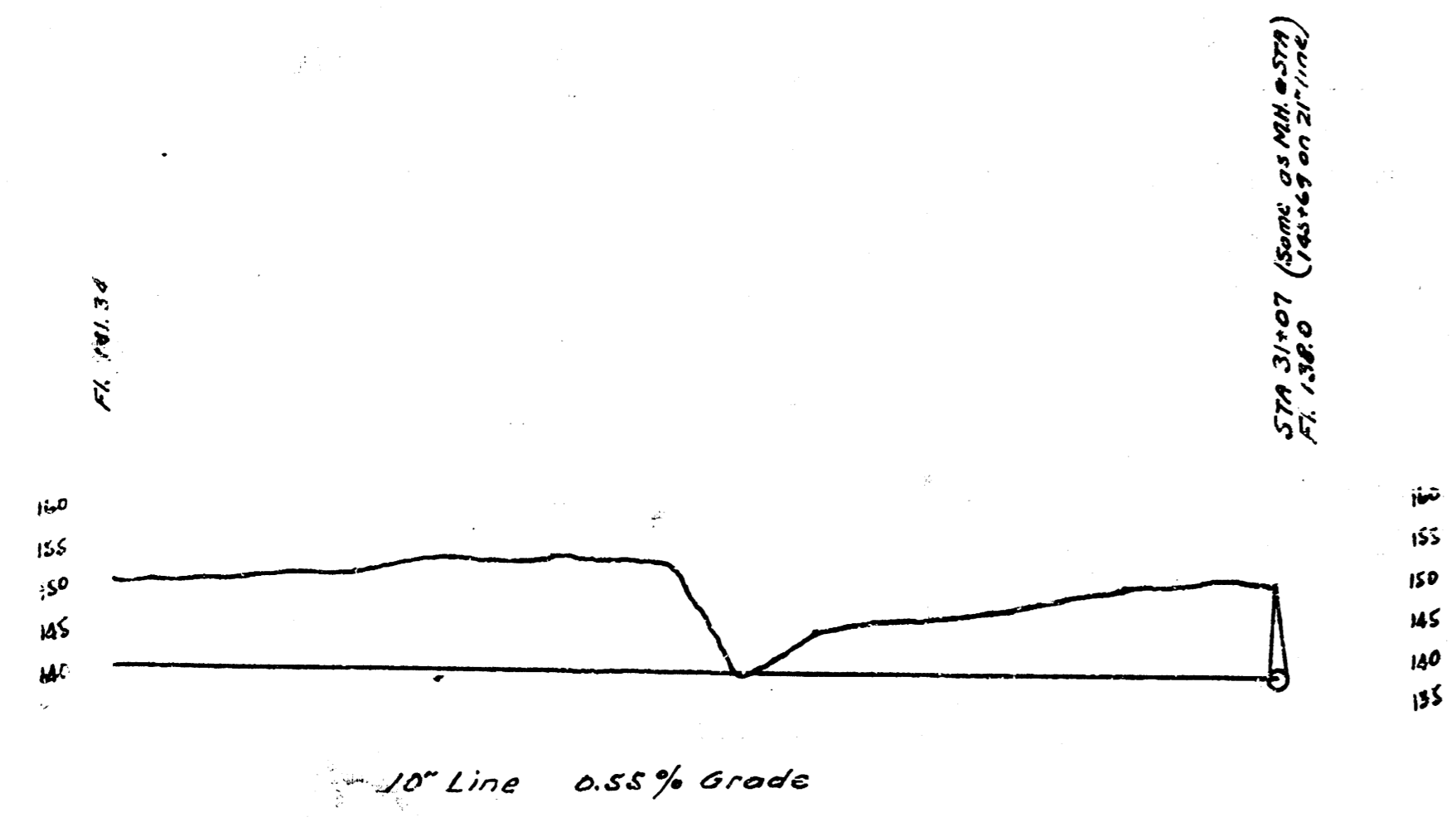
B.M. Elev. 167.82 + on S.E. cor. ch. rd. Oliver & Douglas.



B.M. Elev. 172.51 on thimble E. end radius, Buckley Drive & Central.



B.M. Elev. 158.65 + on ch 18 joint N. of N.H. of Gilbert on E.S. of Belmont.



INTERCEPTS
DRY CREEK SUB-MAIN
TO S.S. NO. 12.
DEC. 1932