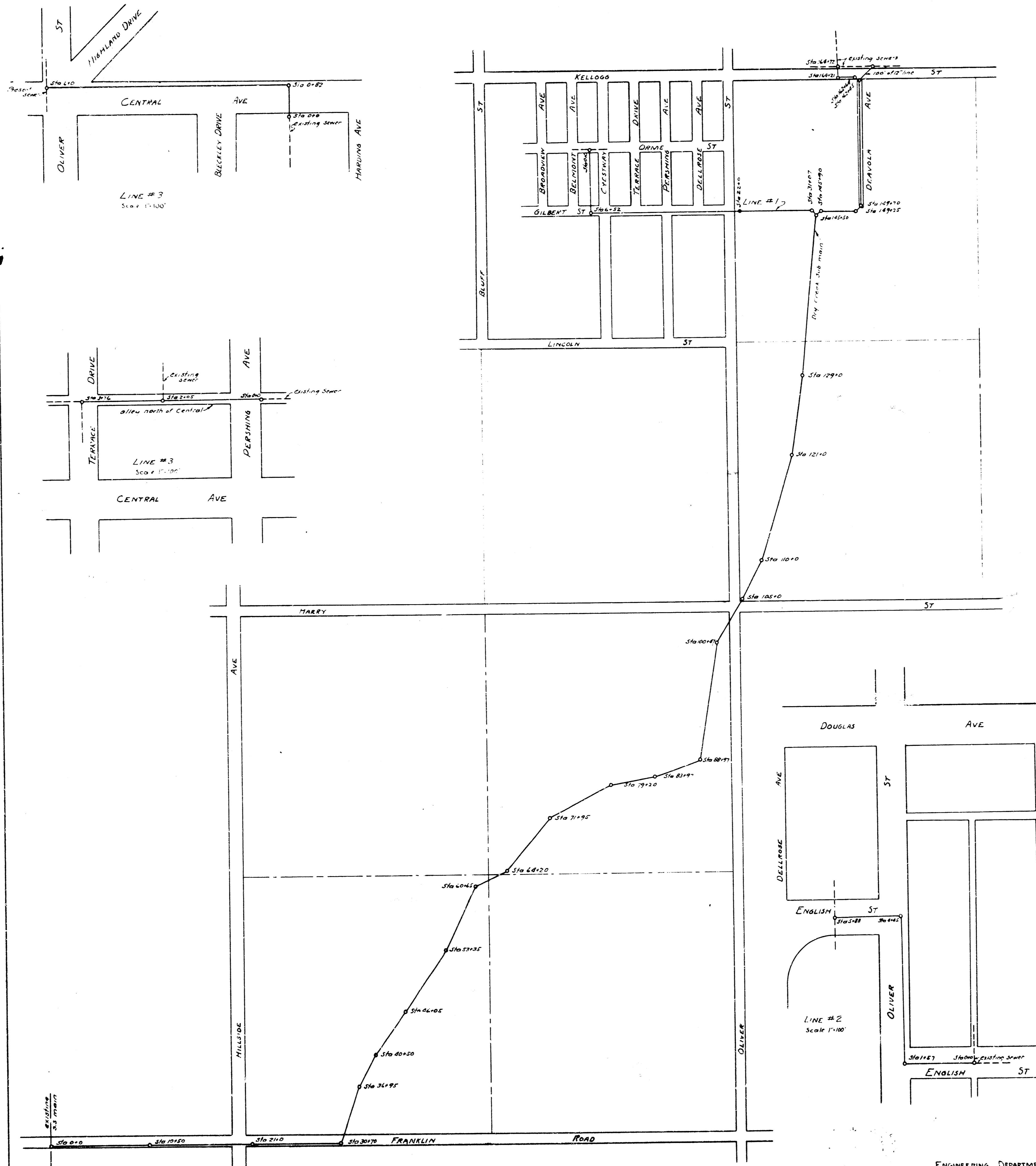
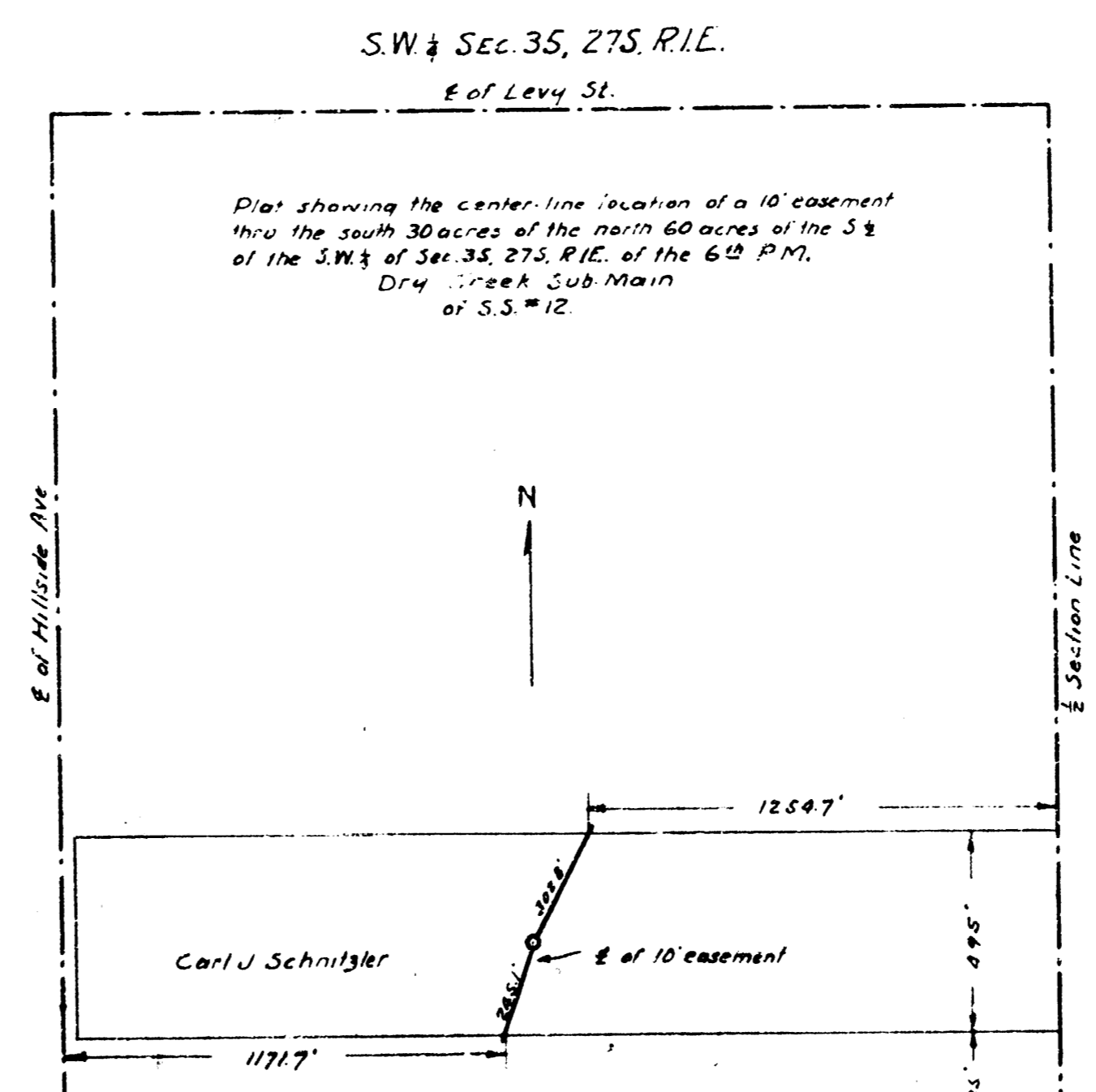
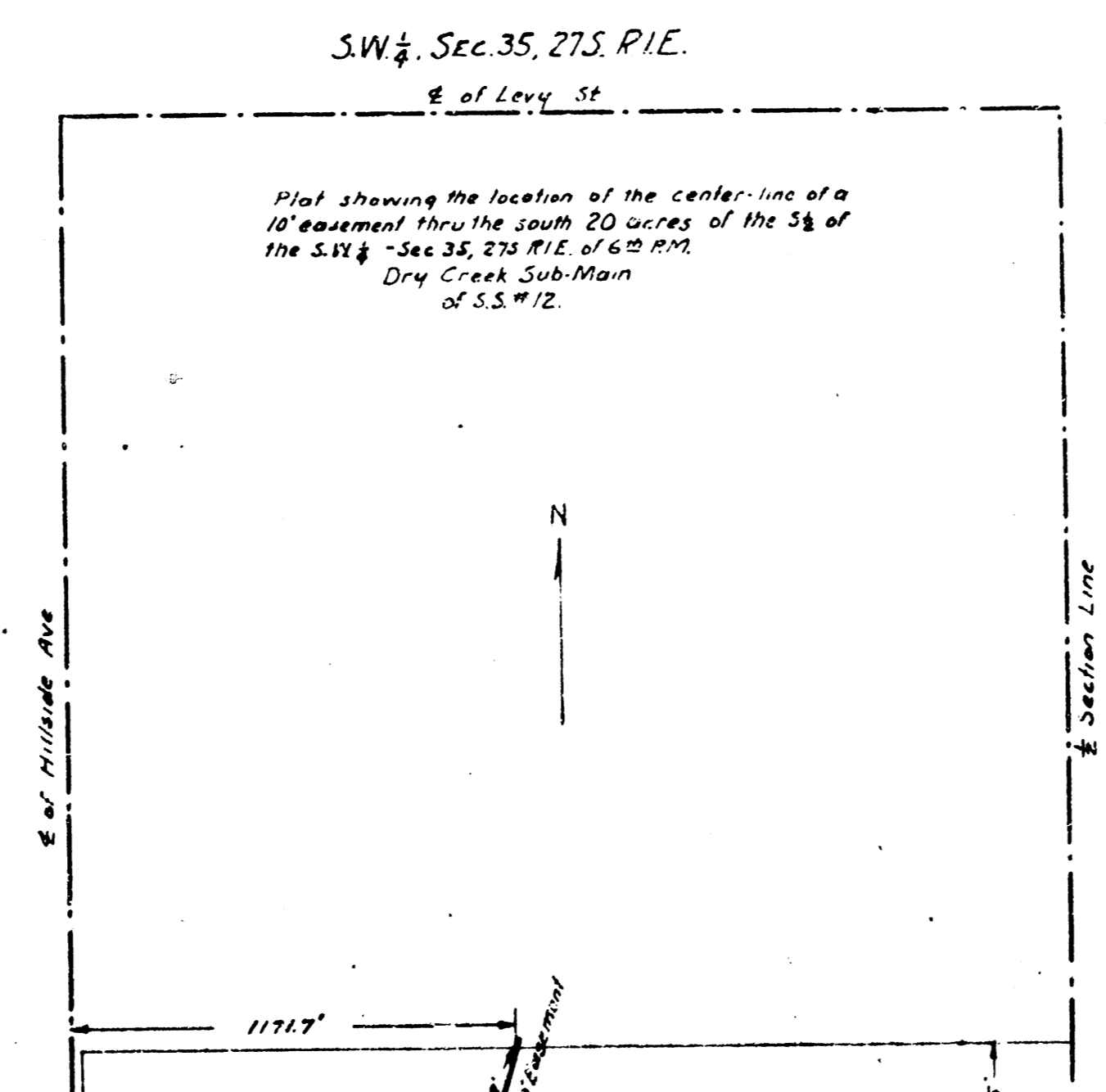
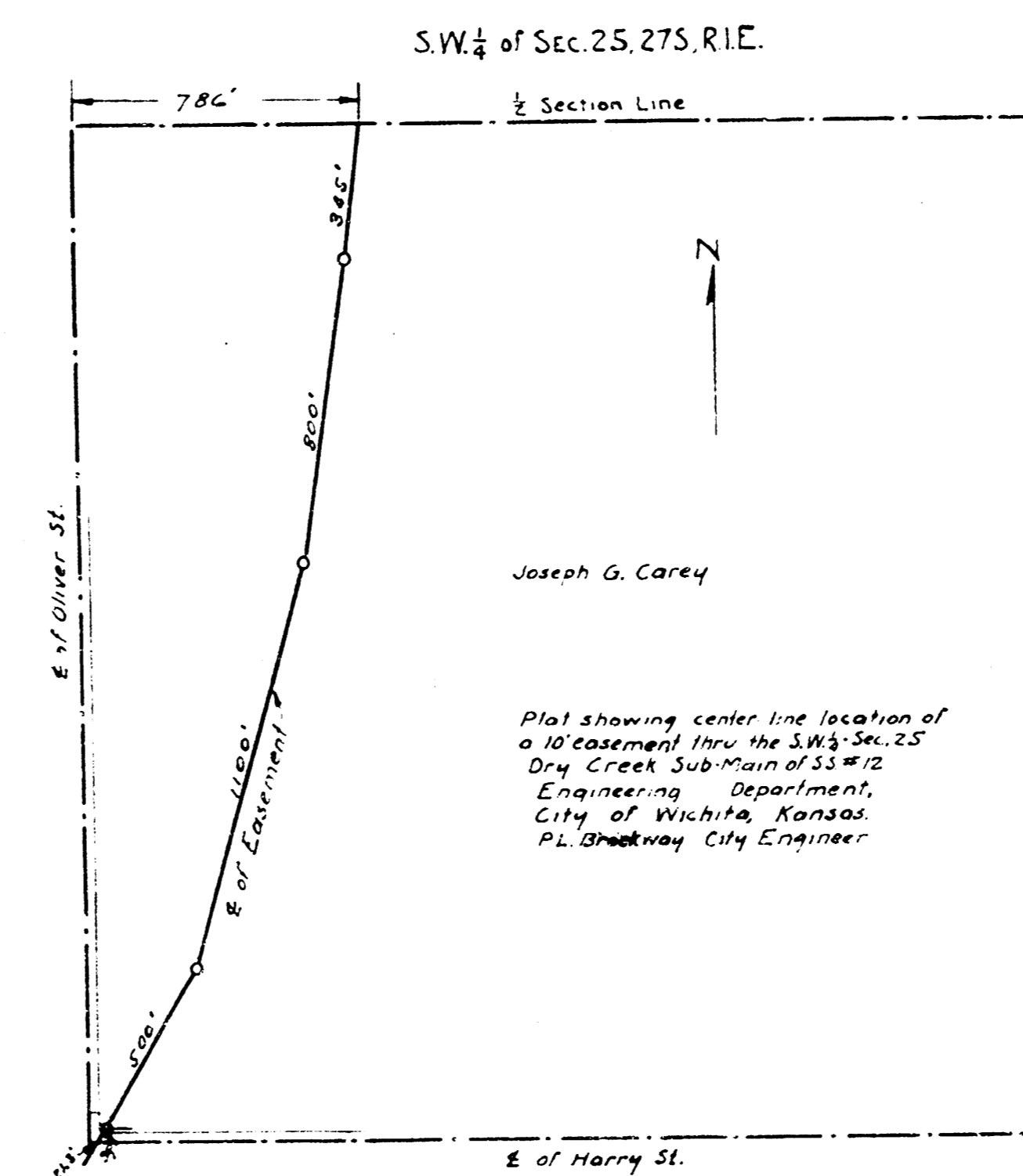
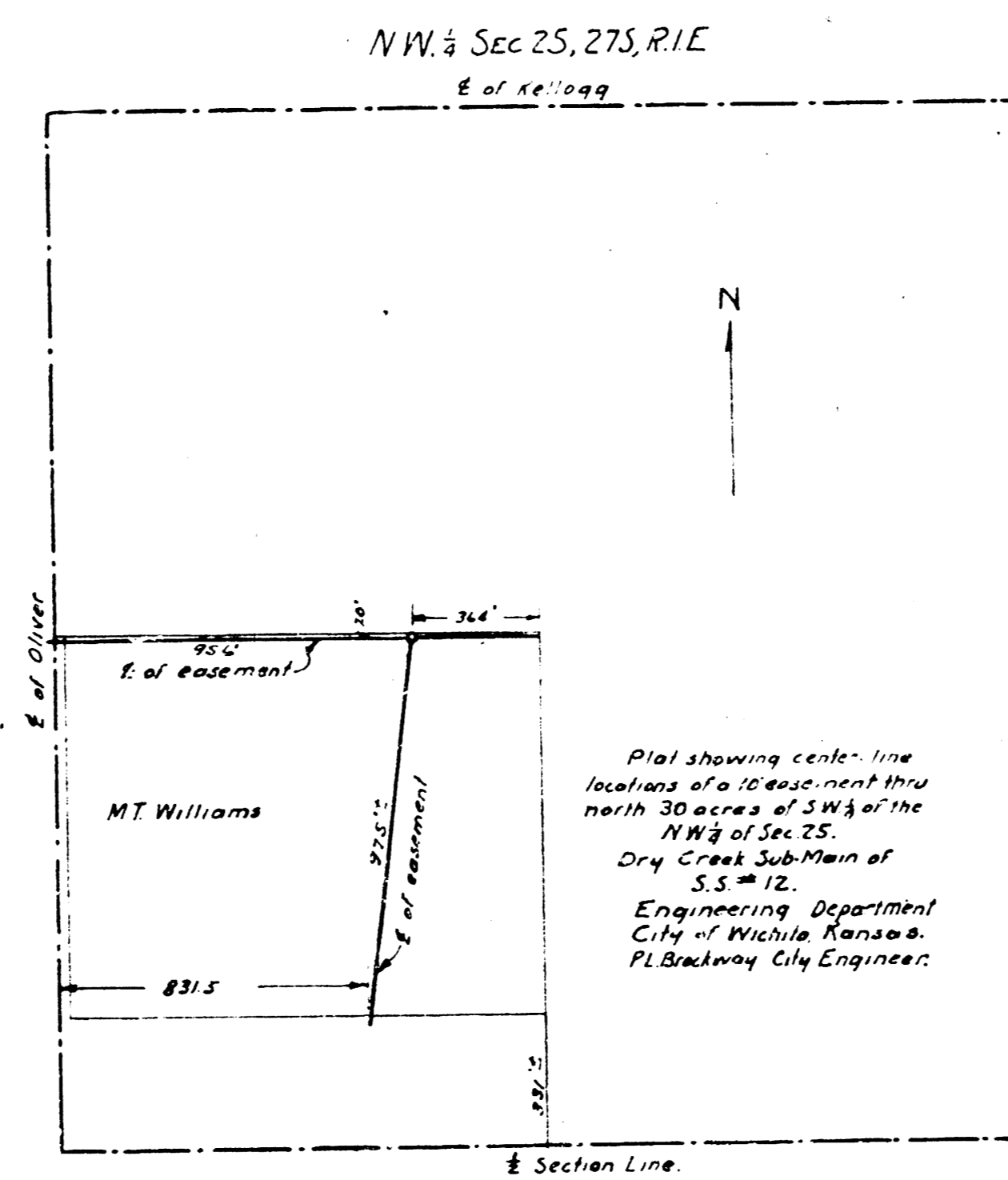
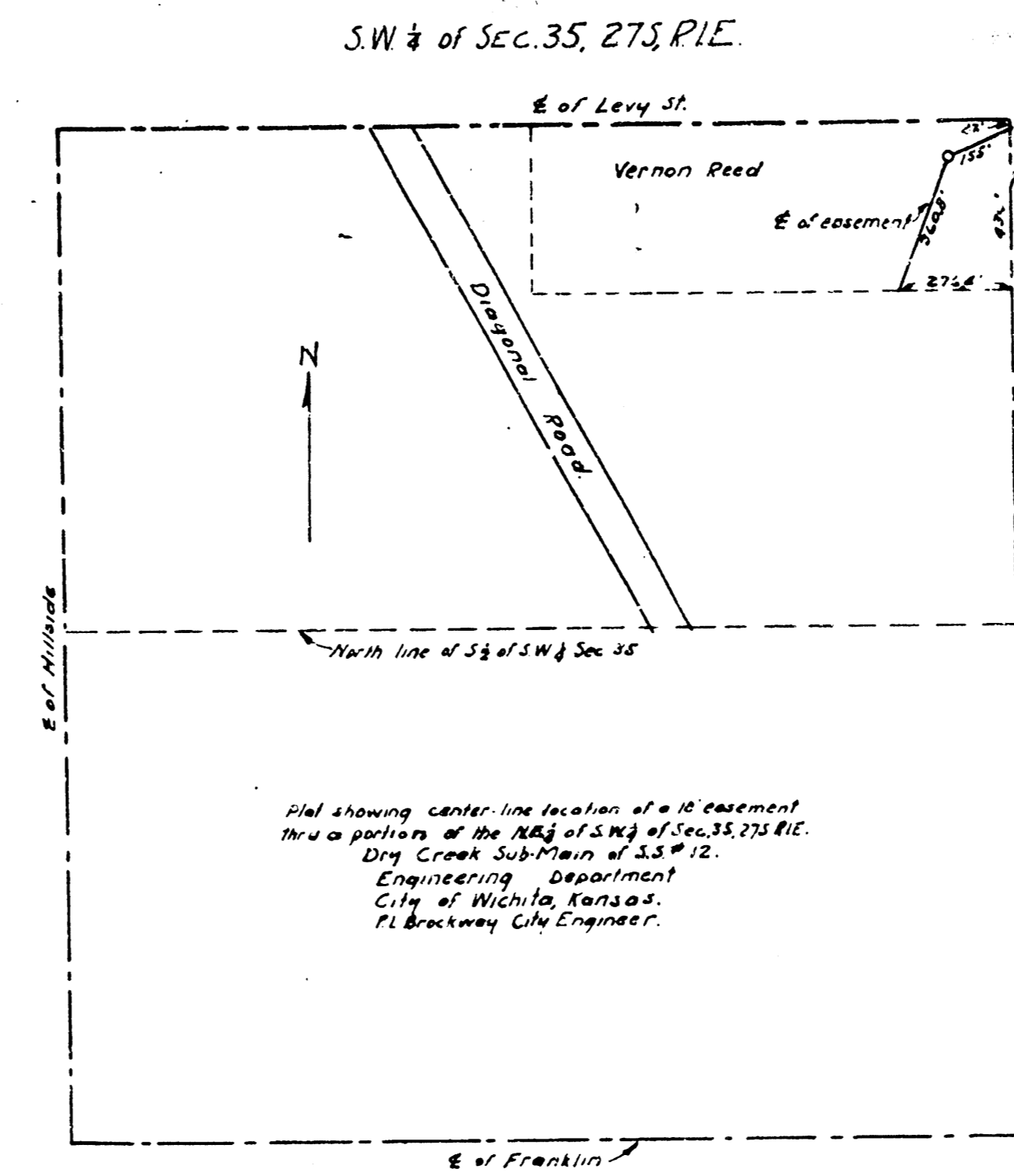
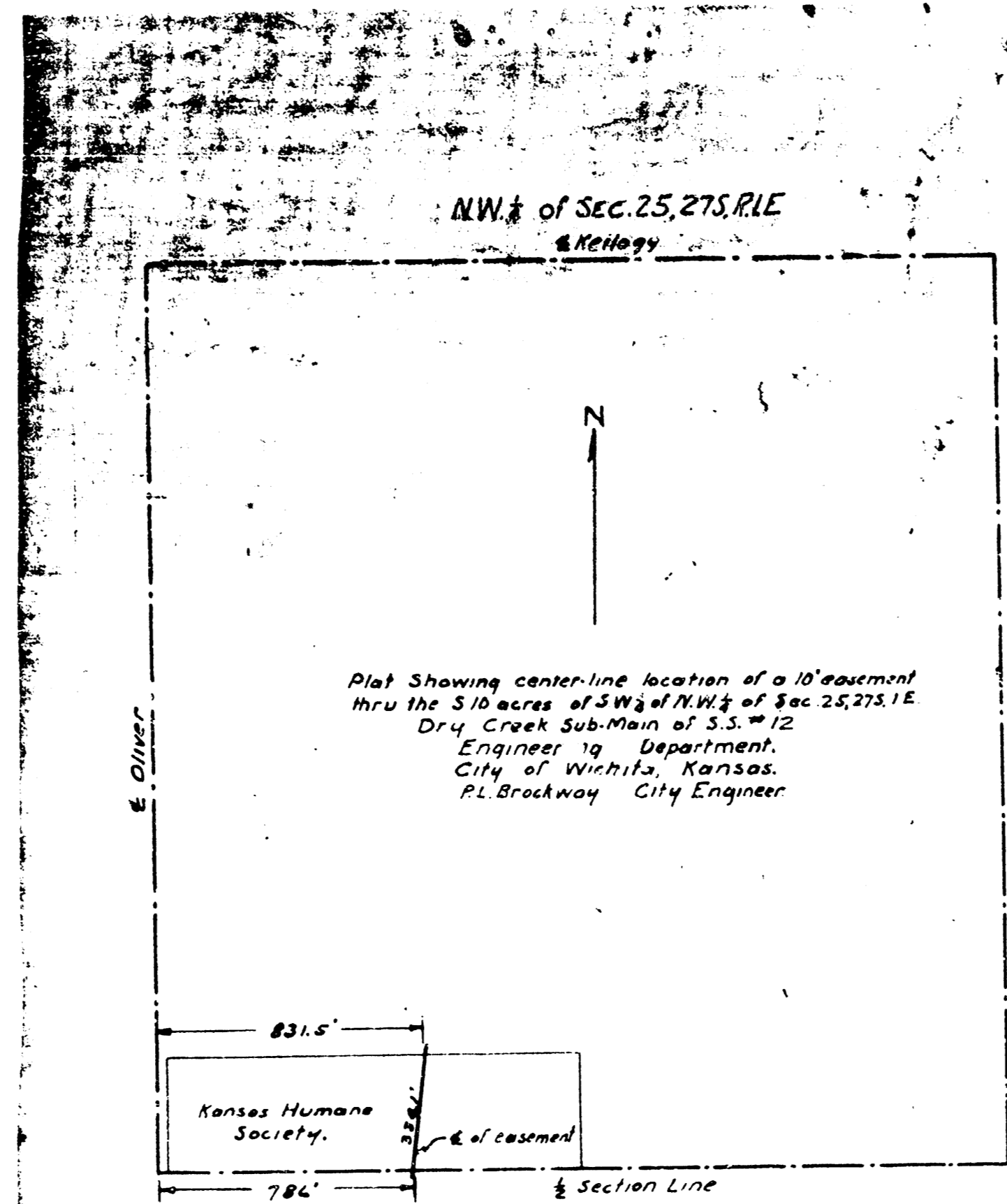


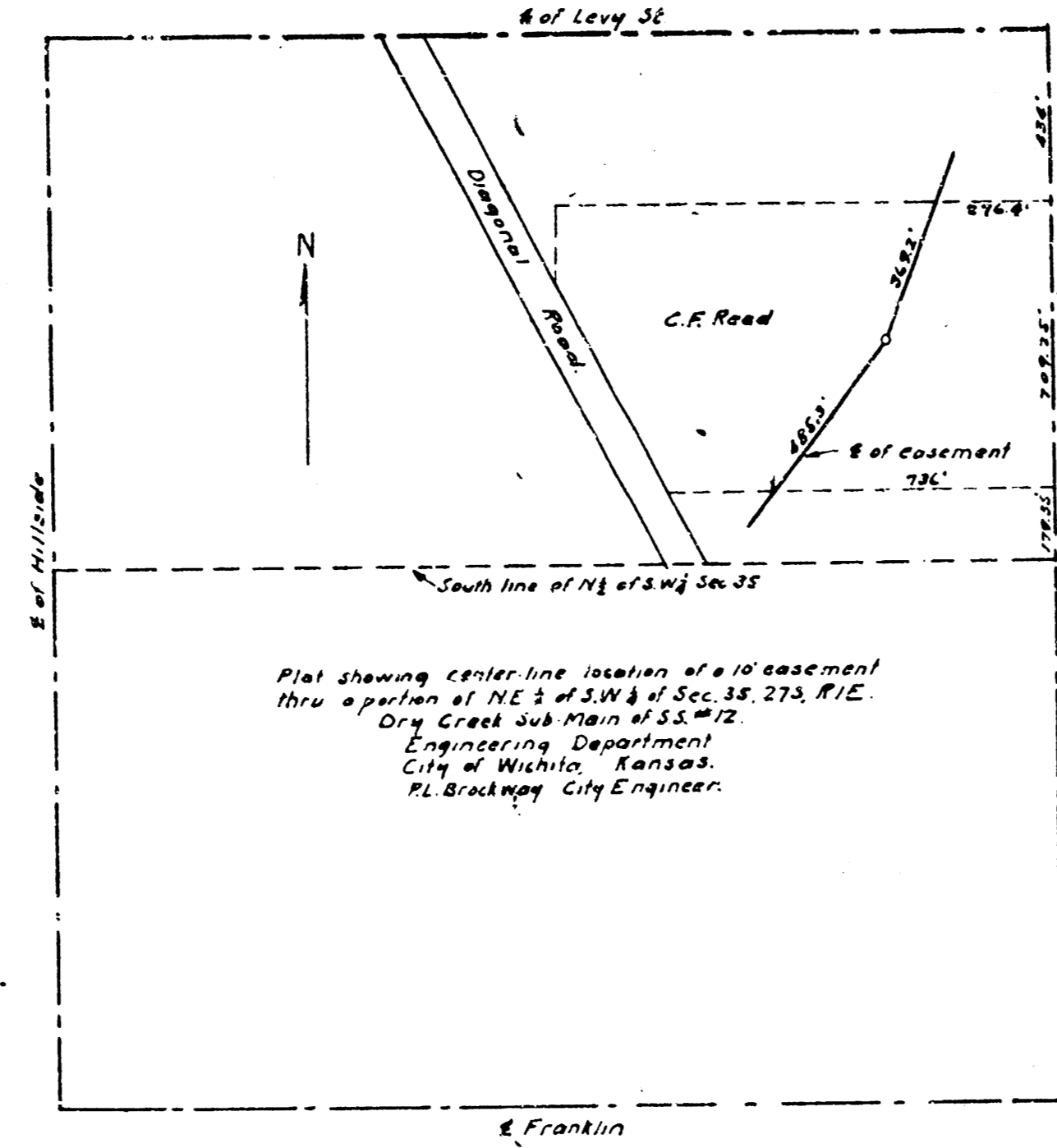
# PLAT SHOWING LOCATION OF DRY CREEK SUB-MAIN TO S.S.NO.12. AND THE INTERCEPTING LINES.

SHEET #1 4 SHEETS.

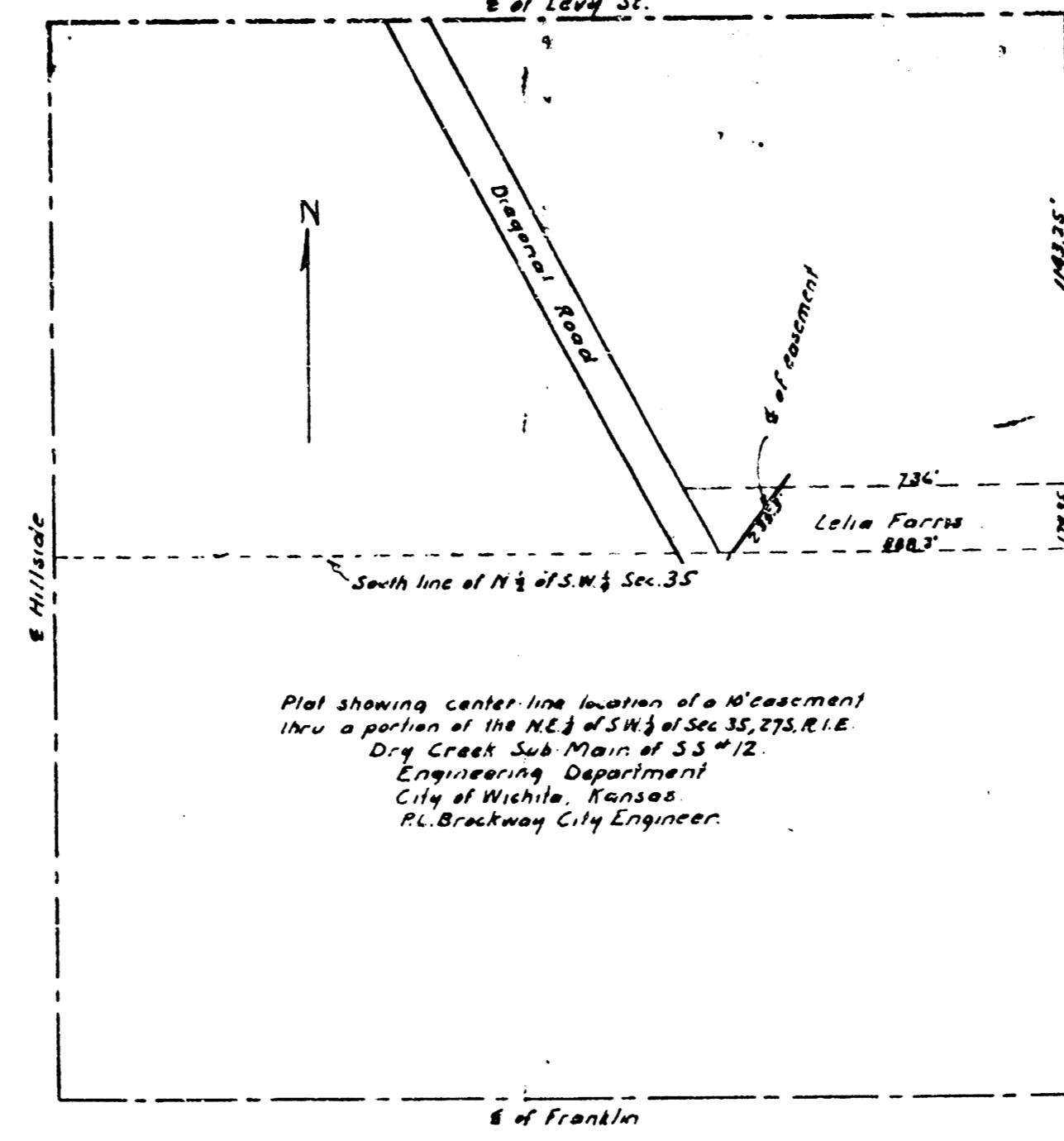




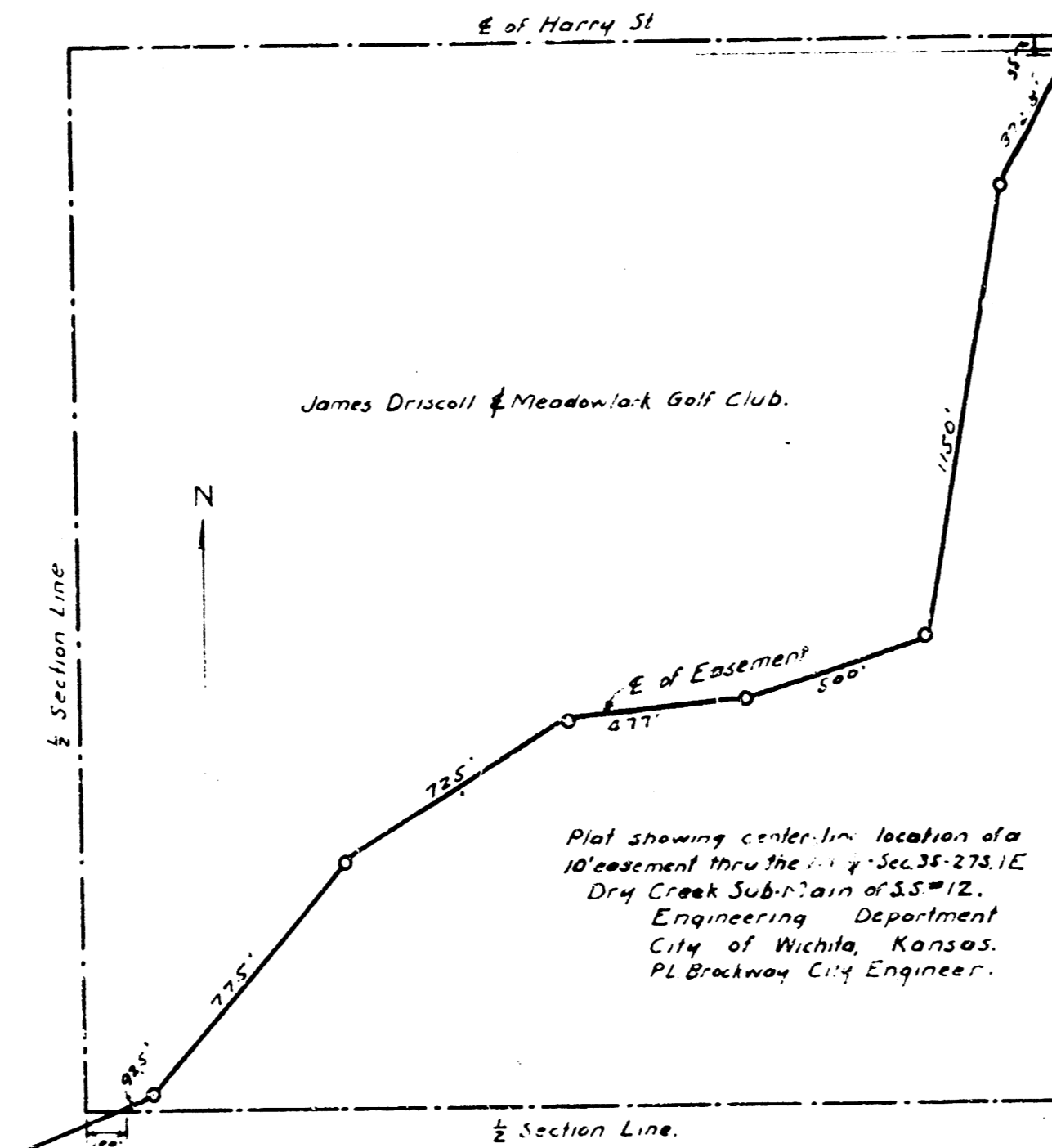
SW 1/4 Sec. 35, 27S, R1E.



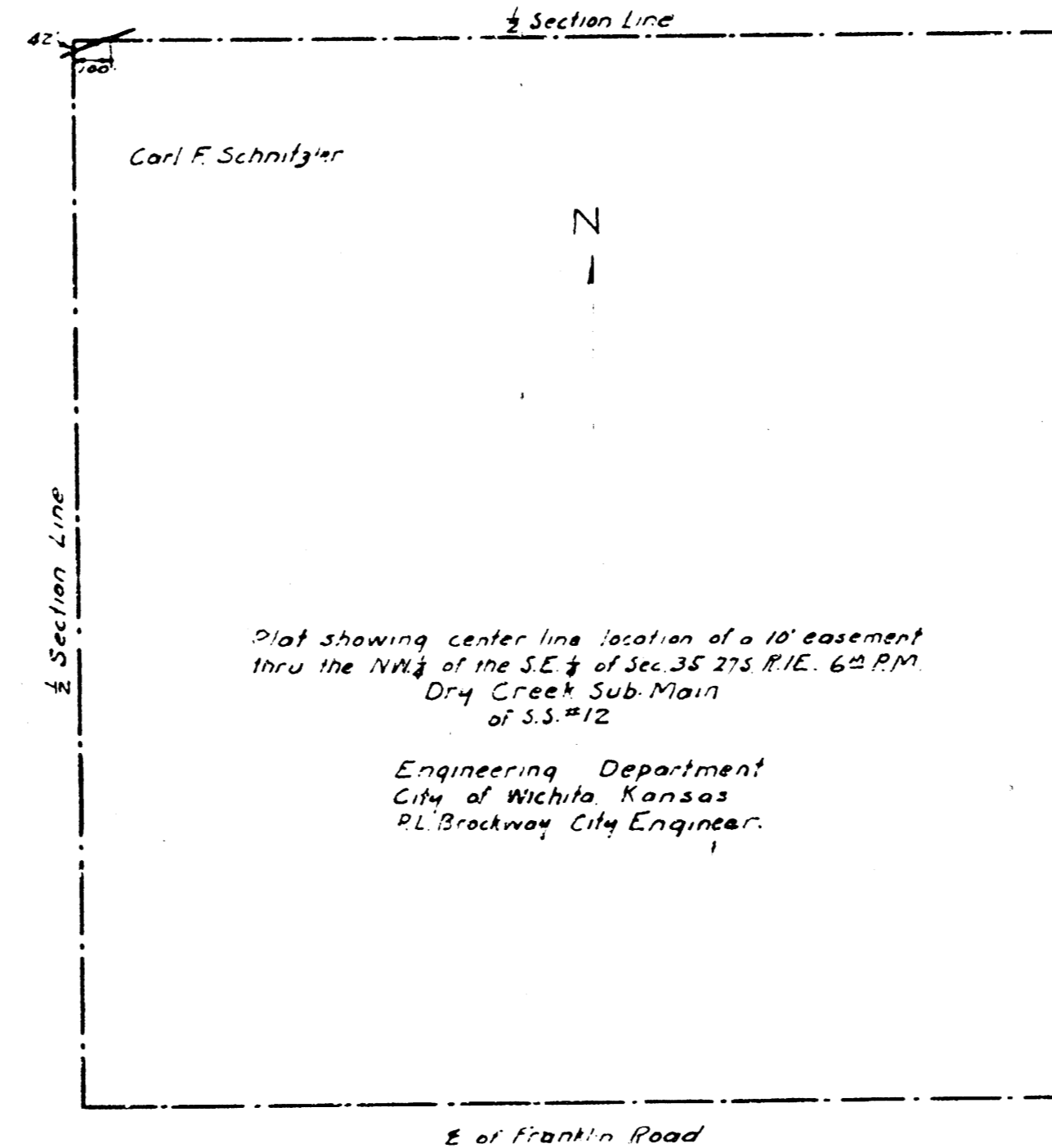
SW 1/4 Sec. 35, 27S, R1E.



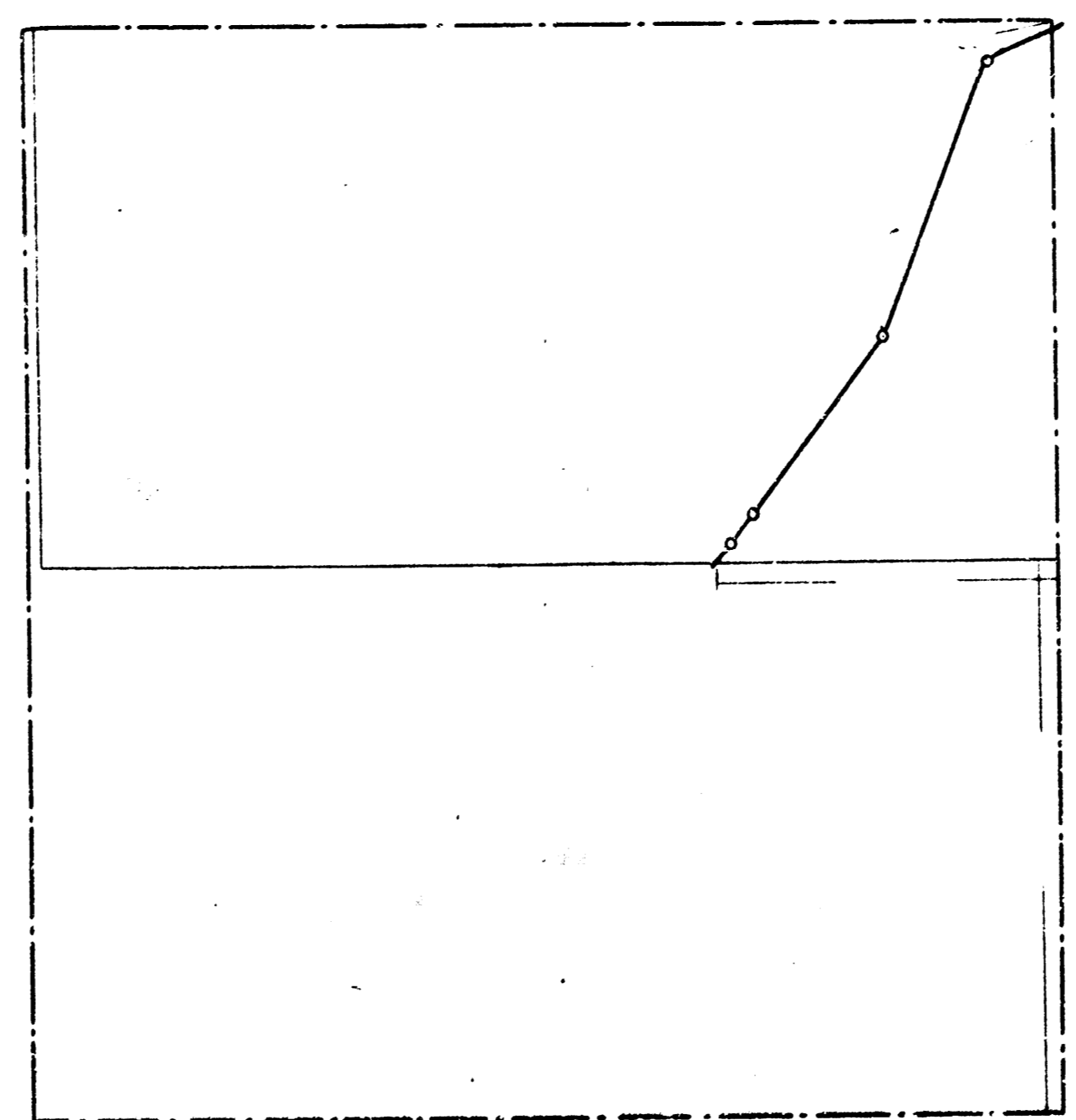
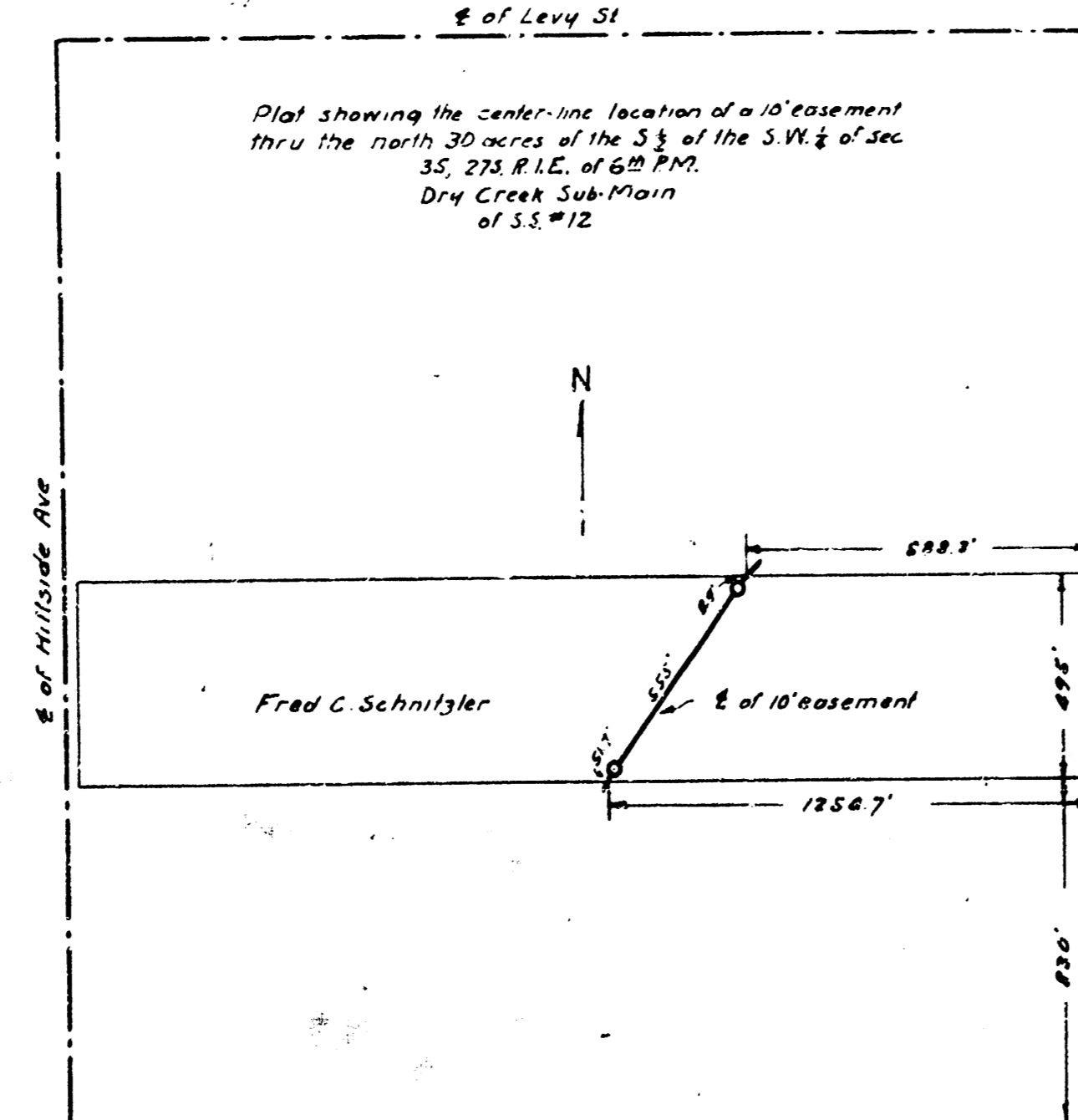
NE 1/4 Sec. 35, 27S, R1E.



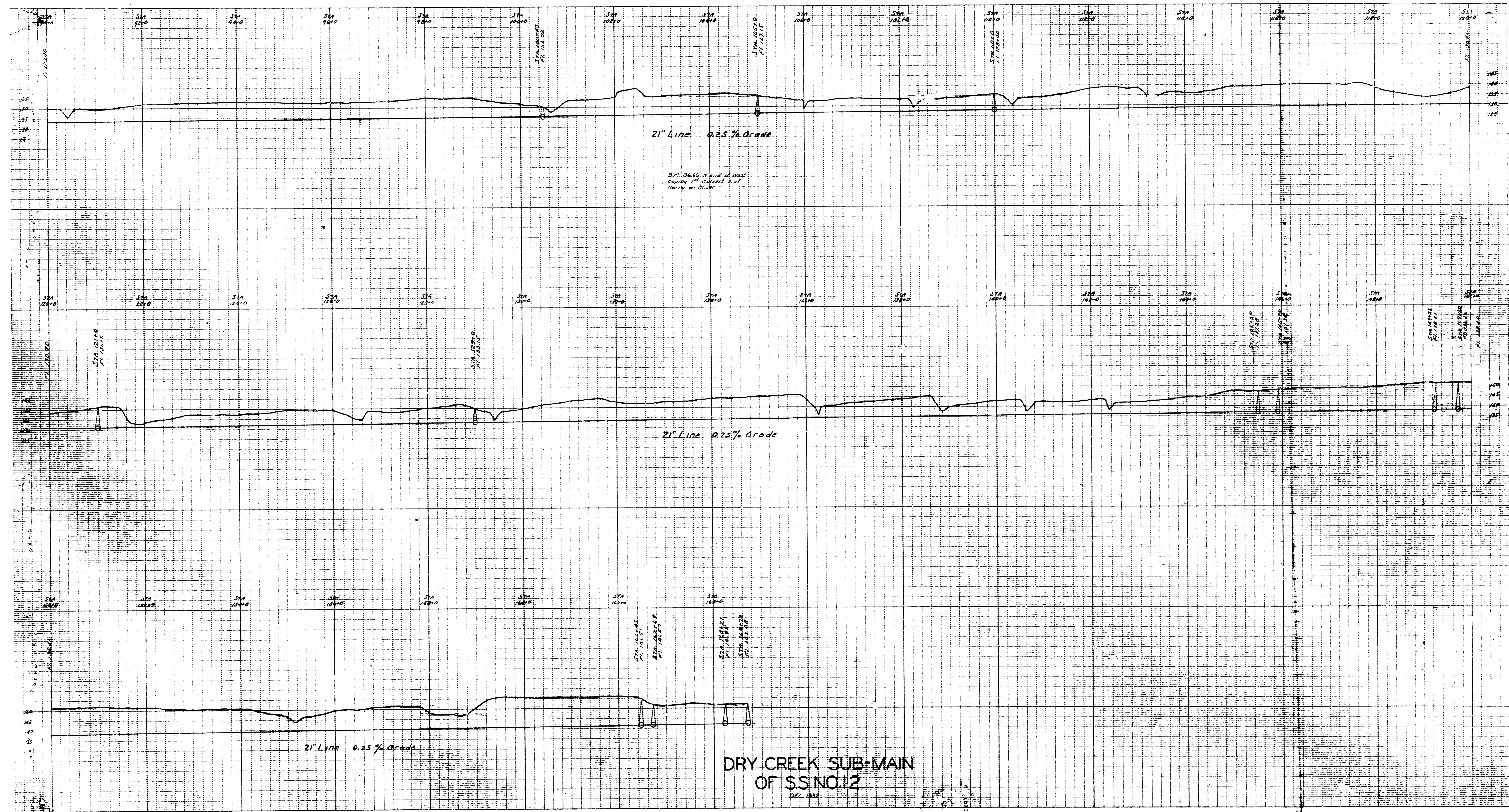
SE 1/4 Sec. 35, 27S, R1E.



SW 1/4 Sec. 35, 27S, R1E.







DRY CREEK SUB-MAIN  
OF S.S. NO. 12  
DEC. 1932

OS & A STALL ENGINEERS  
100 N. 1st St. ST. LOUIS, MO.

A. B. O. M. ESTERIN  
100 N. 1st St. ST. LOUIS, MO.

OS & A STALL ENGINEERS  
100 N. 1st St. ST. LOUIS, MO.

A. B. O. M. ESTERIN  
100 N. 1st St. ST. LOUIS, MO.

OS & A STALL ENGINEERS  
100 N. 1st St. ST. LOUIS, MO.

