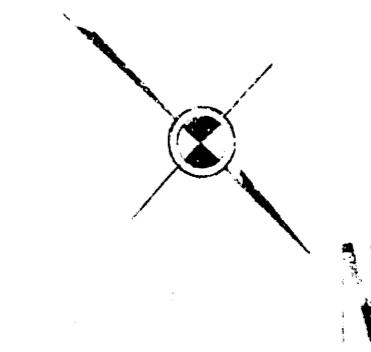


NOTE: PROVISIONS MAY BE MADE FOR TEMPORARY REPAIR OF EXISTING PAVEMENT ON THIS PROJECT USING 2 INCHES OF ASPHALT. TEMPORARY REPAIR OF EXISTING PAVEMENT WILL DEPEND UPON THE CONDITION OF THIS PROJECT WITH THE KANSAS HIGHWAY COMMISSION PAVING PROJECT. THE TEMPORARY REPAIR OF EXISTING PAVEMENT MAY BE DELETED IF THIS PROJECT CAN BE SATISFACTORILY COMPLETED WITH THE KANSAS HIGHWAY COMMISSION PAVING PROJECT.

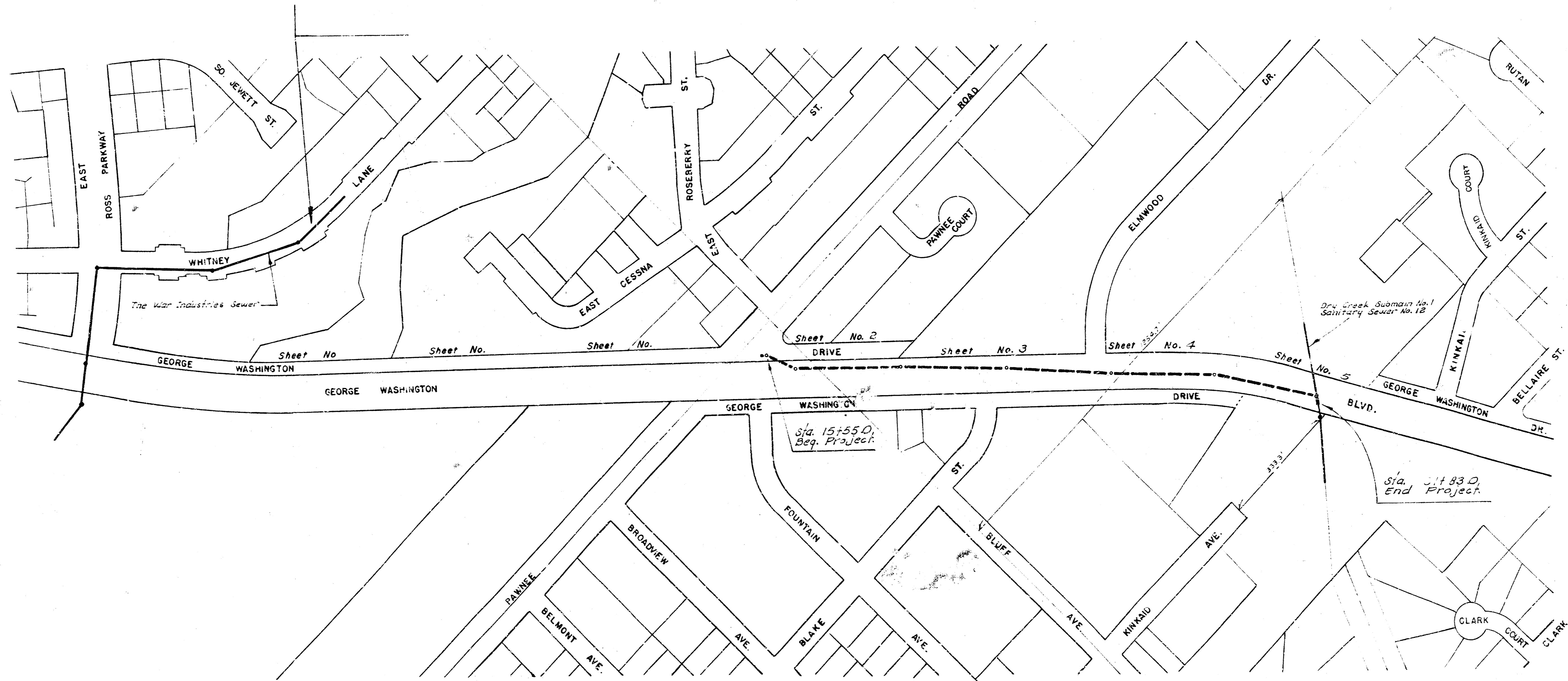
ALTER, REPAIR, RECONSTRUCT OR
CONSTRUCT A SEWER TO SUPPLEMENT
DRY CREEK SUBMAIN 1, S. S. NO. 12

ALONG GEO. WASHINGTON BLVD. FROM PAWNEE AVE. TO A POINT 300 FT. SOUTH OF KINKAID ST.

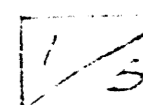
CITY OF WICHITA, KANSAS
R. W. LINN — CITY ENGINEER
MAY 1974, PROJECT NO. DBKM 573011

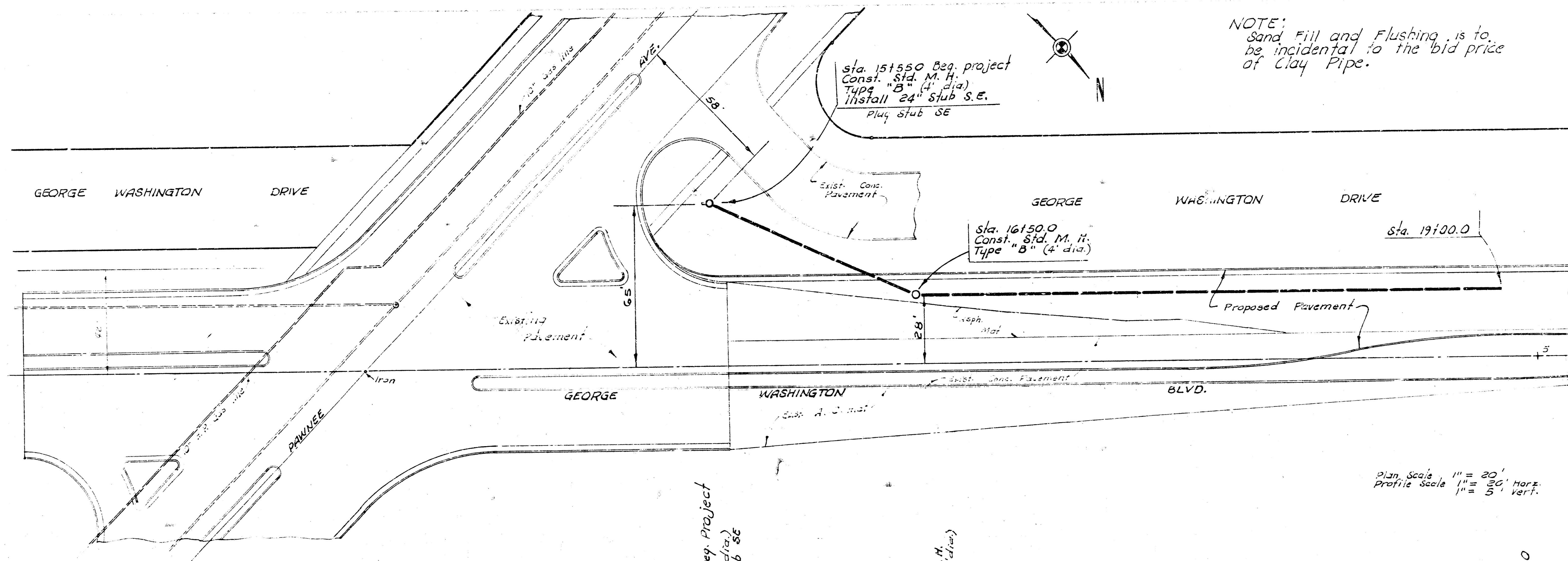


SCALE 1" = 150'



MAY 1974
PROJECT NO. DBKM 573011





NOTE:
Sand Fill and Flushing is to
be incidental to the bid price
of Clay Pipe.

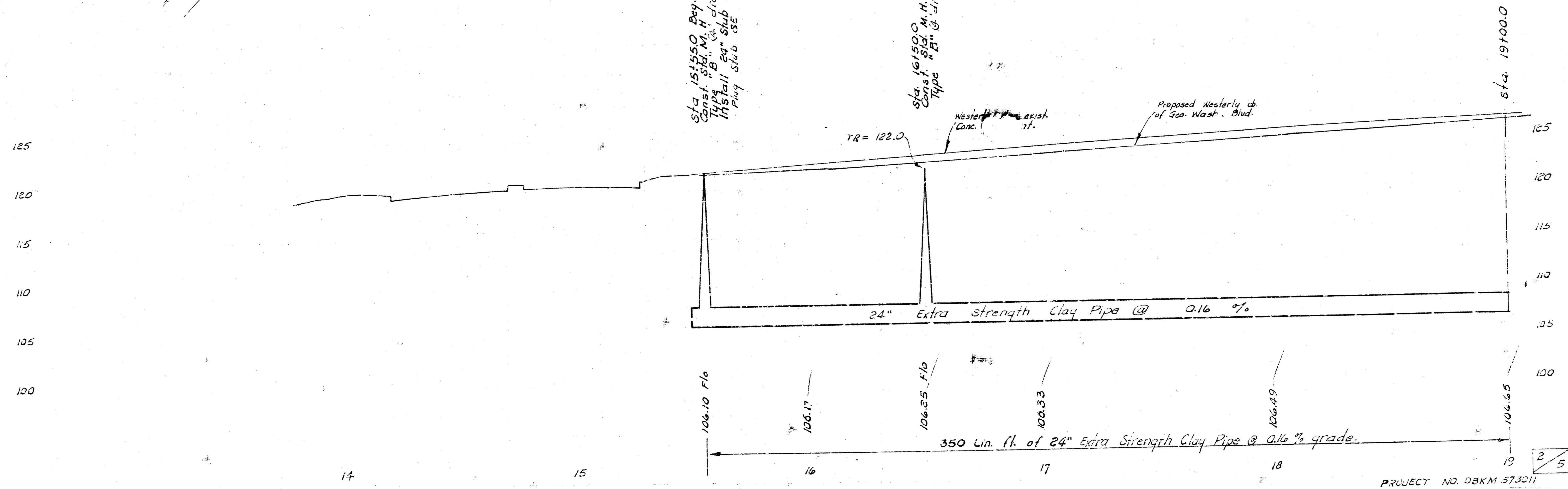
Sta. 15155.0 Beg. Project
Const. Std. M. H.
Type "B" (4' dia.)
Install 24" Stub S.E.
Plug Stub S.E.

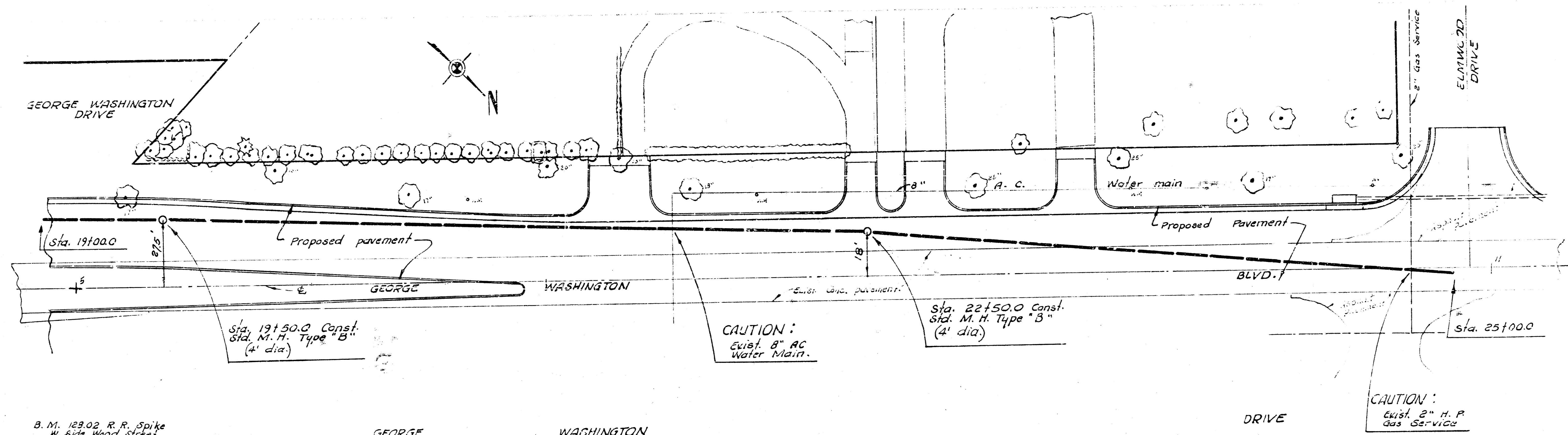
Sta. 16150.0
Const. Std. M. H.
Type "B" (4' dia.)

Sta. 15155.0 Beg. Project
Const. Std. M. H.
Type "B" (4' dia.)
Install 24" Stub S.E.
Plug Stub S.E.

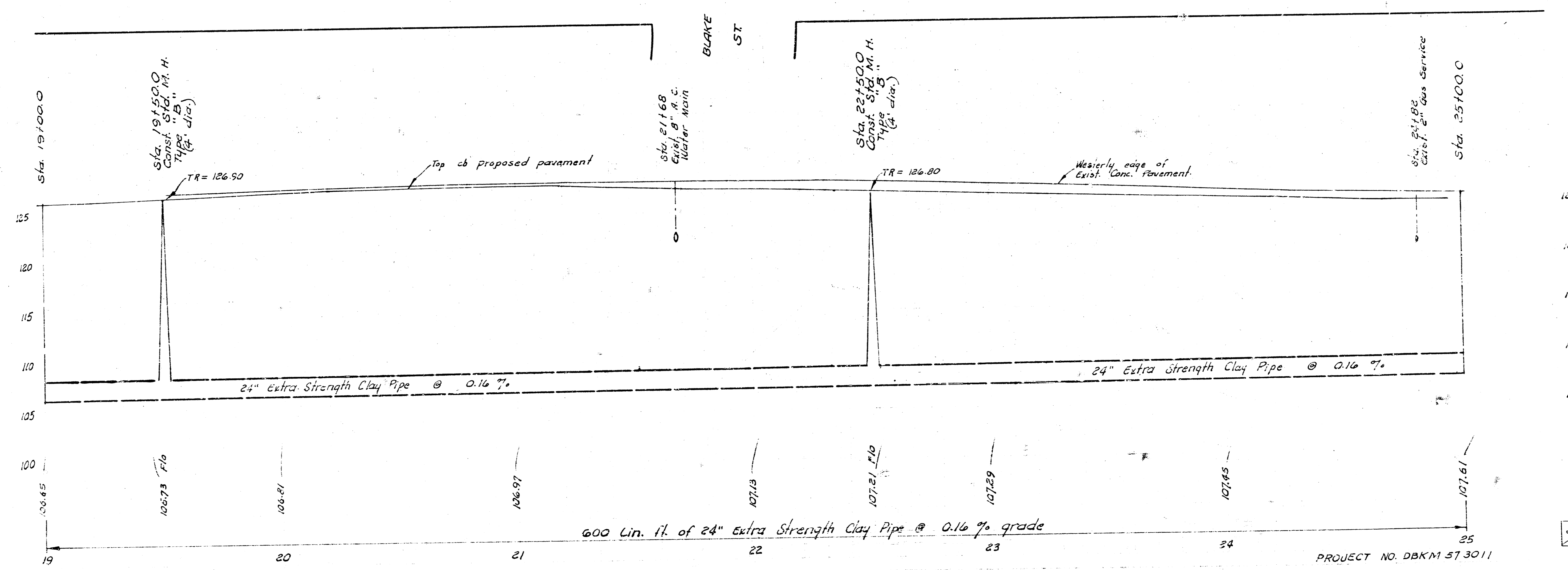
Sta. 16150.0
Const. Std. M. H.
Type "B" (4' dia.)

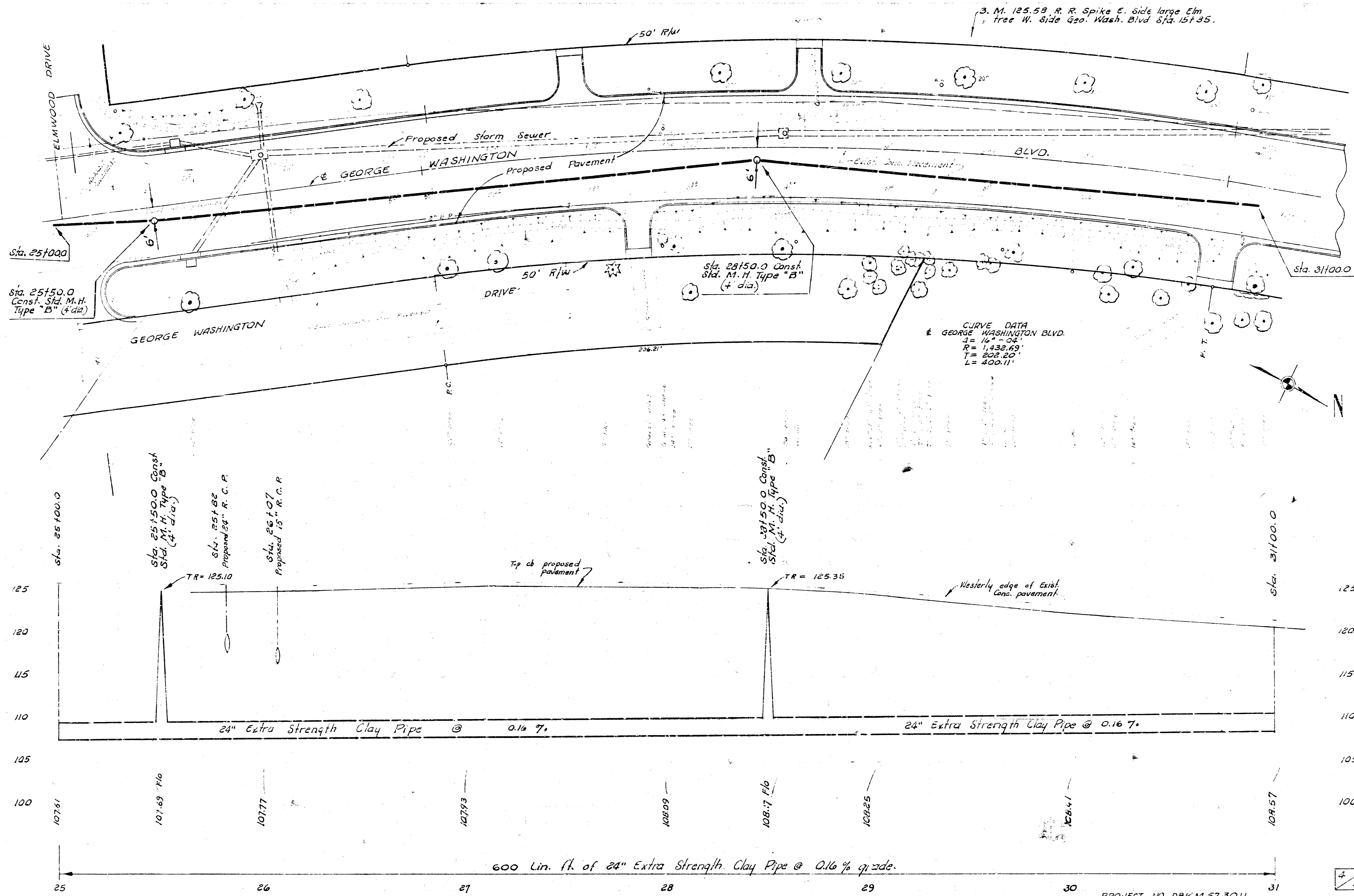
Plan Scale 1" = 20' Horiz.
Profile Scale 1" = 5' Vert.

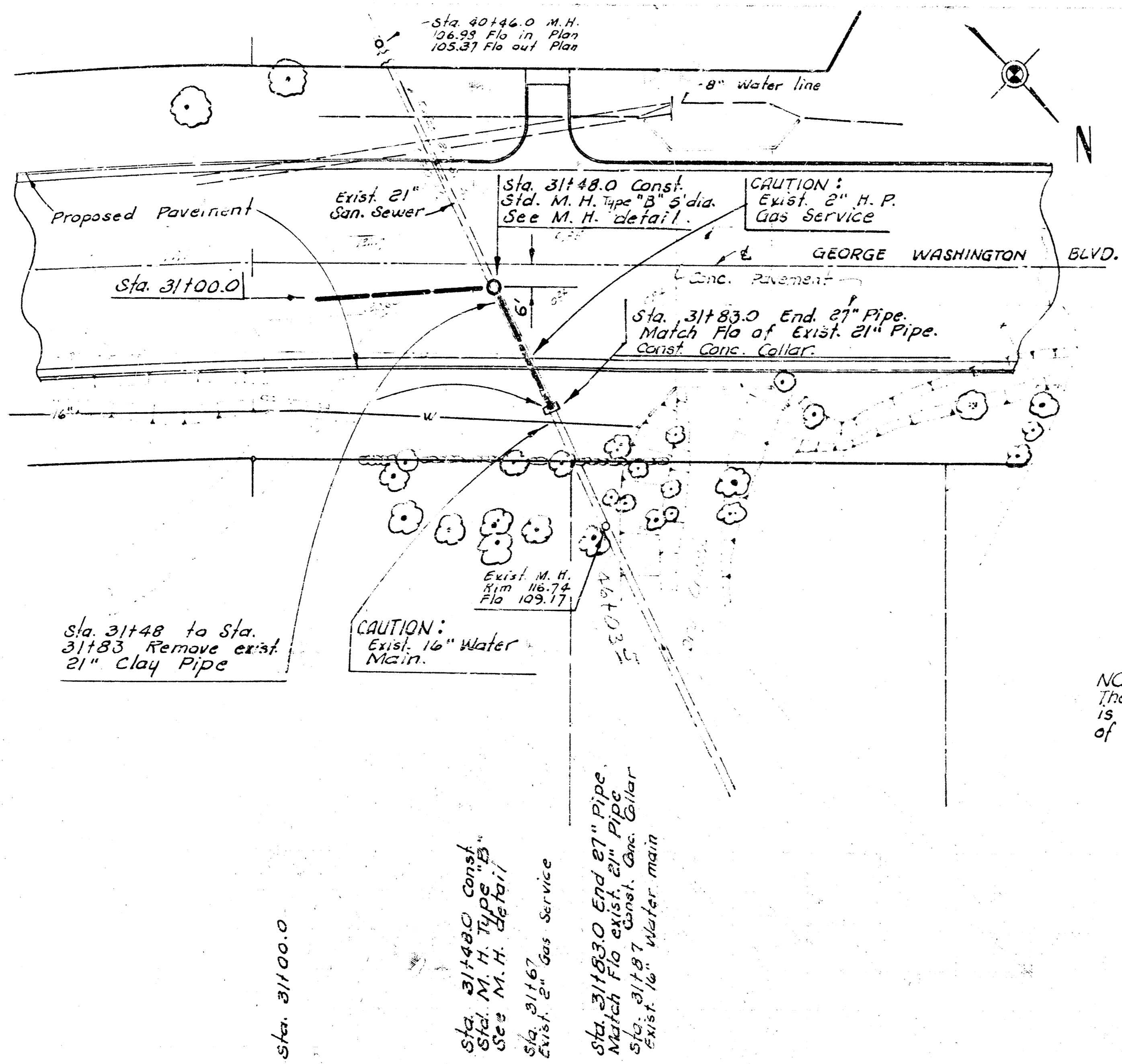




B. M. 123.02 R.R. Spike
N. Side Wood Stake
Light Pig C. Side Geo.
Wash. Blvd. approx.
115' S. of S. Line of
Blake St.







NOTE:
The conc. collar of Sta. 31183.0 is to be incidental to the bid price of Clay Pipe.

