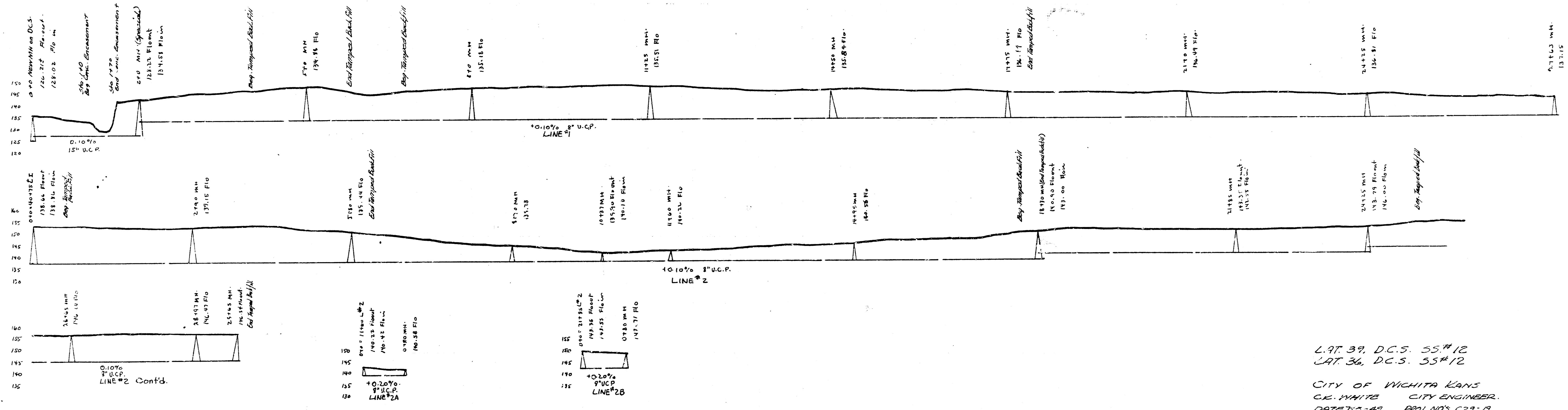
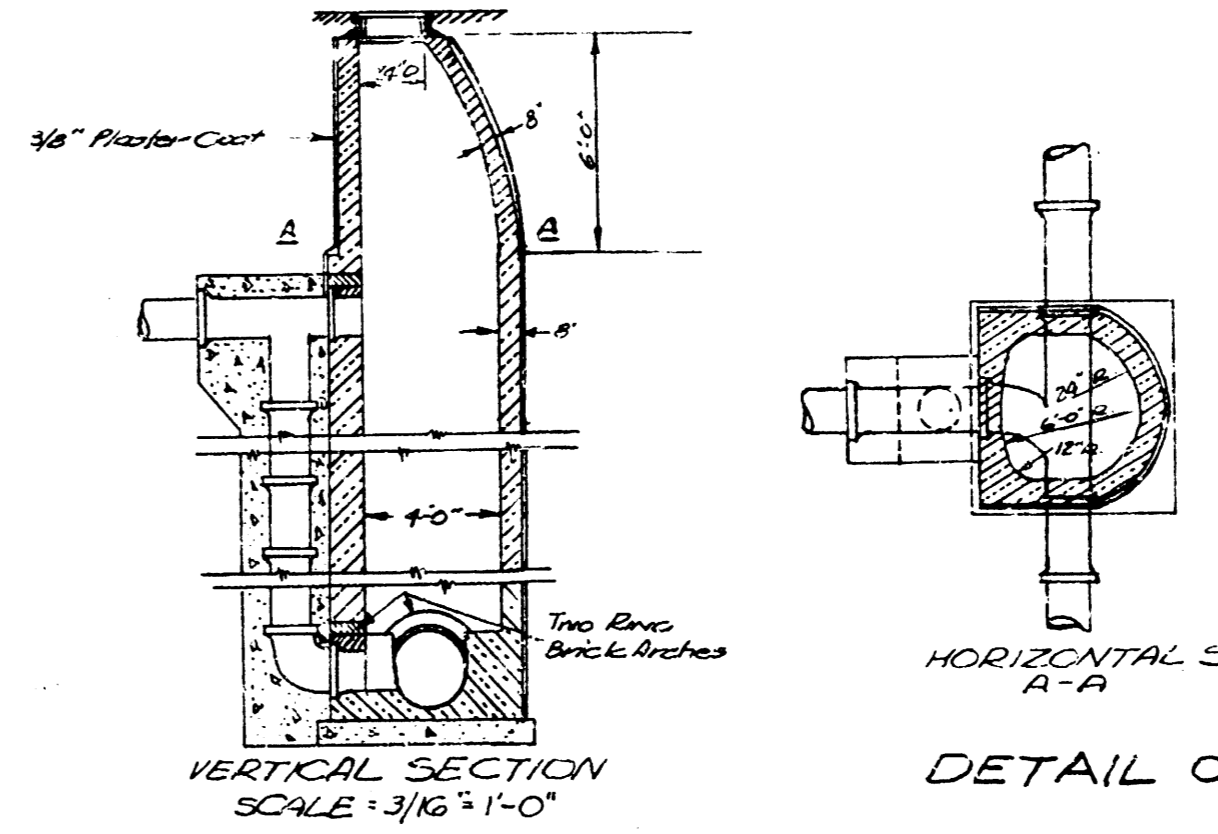
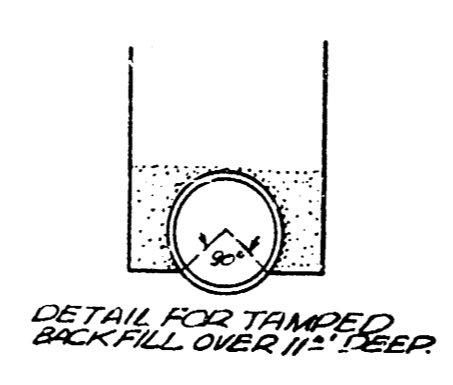


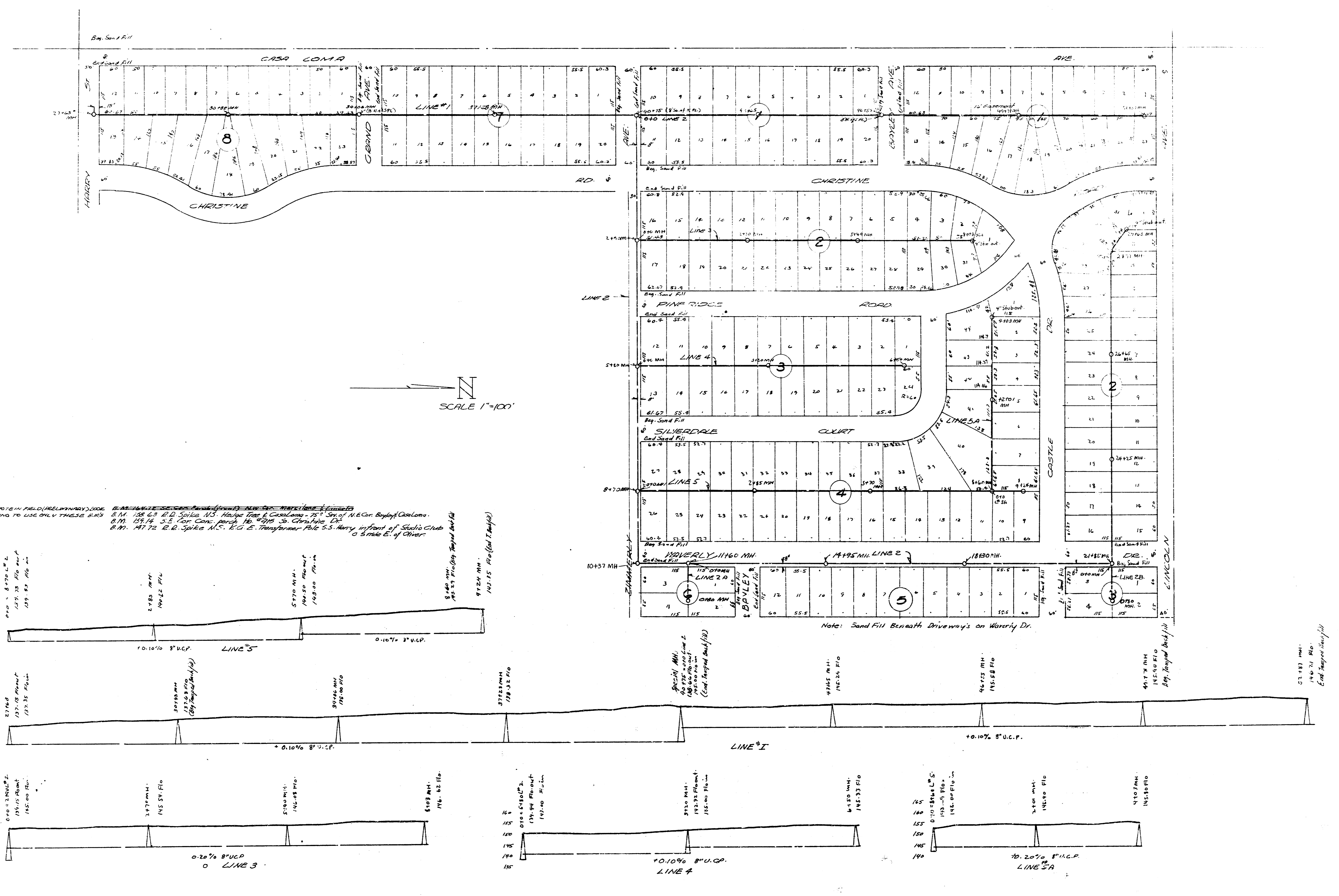
LOCATIONS OF DRY CREEK SWIMBAY. Beg. at a point 212' E. of the Southwest Cor. of said Sec. 36, T. 35 S., R. 36 E., and in an angle with the S.E. of Sec. 36, of a distance of 51' thence with an angle N. 89° 01' W.

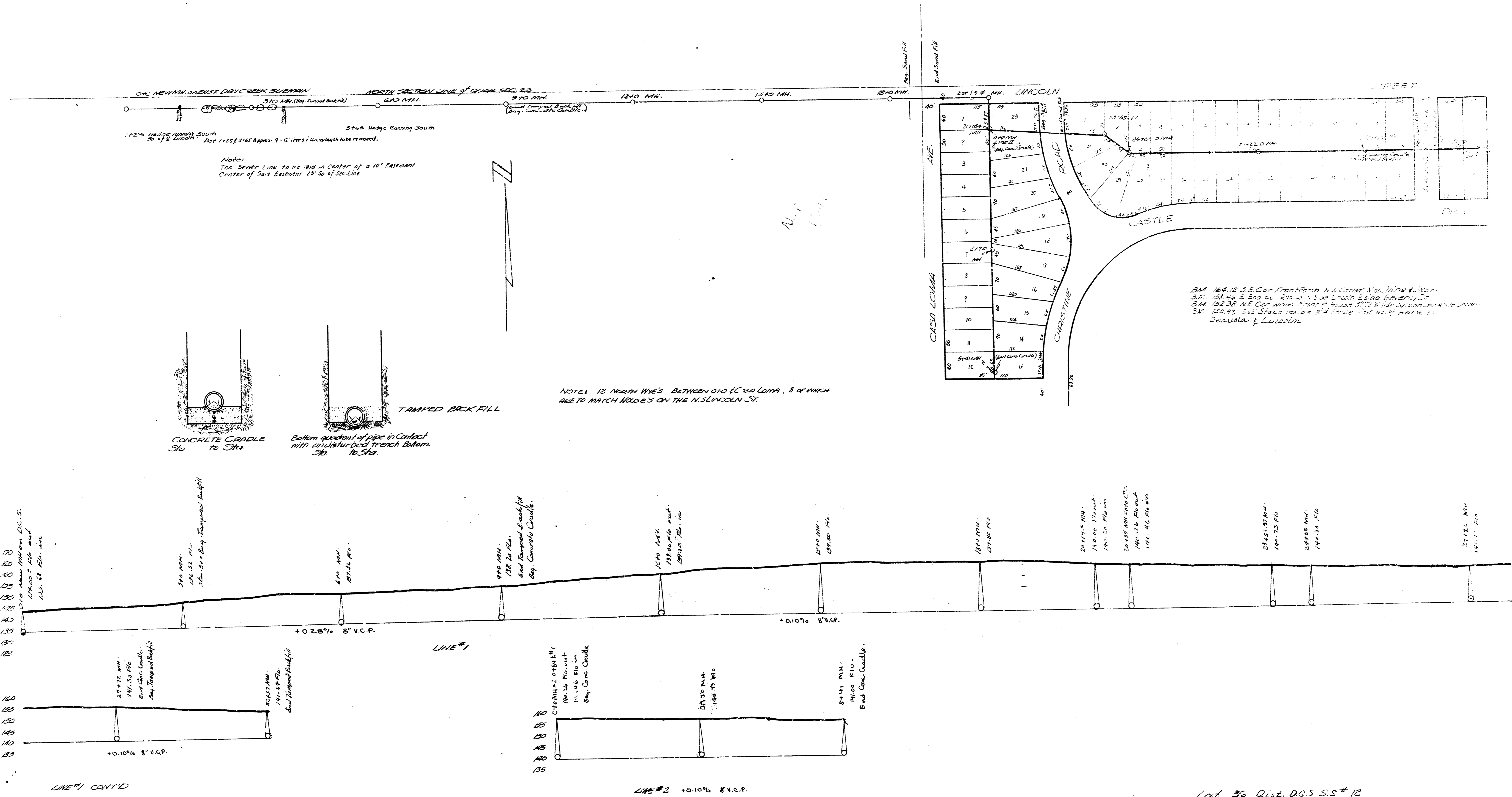
- CONTRACT LINES FOR PURCELL'S 6TH**
- LINE 1 - STA. 0+10 - STA. 0+100
  - LINE 2 - STA. 0+10 - STA. 2+00
  - LINE 3 - STA. 0+10 - STA. 0+180
  - LINE 4 - STA. 0+10 - STA. 0+150
  - LINE 5 - STA. 0+10 - STA. 0+100
  - LINE 6 - STA. 0+10 - STA. 0+100

- CONTRACT LINES FOR PURCELL'S 5TH**
- LINE 1 - STA. 0+10 - STA. 0+100
  - LINE 2 - STA. 2+00 - STA. 2+100
  - LINE 3 - STA. 0+10 - STA. 0+100



LAT. 39, D.C.S. 55#12  
 LAT. 36, D.C.S. 55#12  
 CITY OF WICHITA KANS  
 C.E. WHITE CITY ENGINEER  
 DATE: 10-29 PER. NOS. 029-17  
 029-31





Note:  
The Sewer Line to be laid in Center of a 10' Eastward  
Center of Salt Enclosed 18" to 20" Line

NOTE: 12 NORTH WYE'S BETWEEN 010 (CASA LOMA) & 010 WHICH  
ARE TO MATCH HOUSE'S ON THE N. LINCOLN ST.

BM 164.12 S.E. COR. FRONT PORCH N.W. CORNER N. LINCOLN ST. & W. 1ST ST.  
BM 157.42 S.E. COR. 221 N. N. 5th St. N. CORNER E. 1st St. & W. 1st St.  
BM 152.38 N.E. COR. WYCKOFF HOUSE 5000 N. 1st St. W. 1st St. & W. 1st St.  
BM 150.93 S.W. COR. 221 N. 5th St. N. CORNER E. 1st St. & W. 1st St.  
D. & C. ENGINEERS

LINE #1 CONT'D

LINE #2 +0.10% 8" V.C.P.

Lot. 36 Dist. DC5 S.S.# 12  
City of Wichita, Kansas  
I. K. White City Engineer  
date 7-99 Proj. No. C29-19