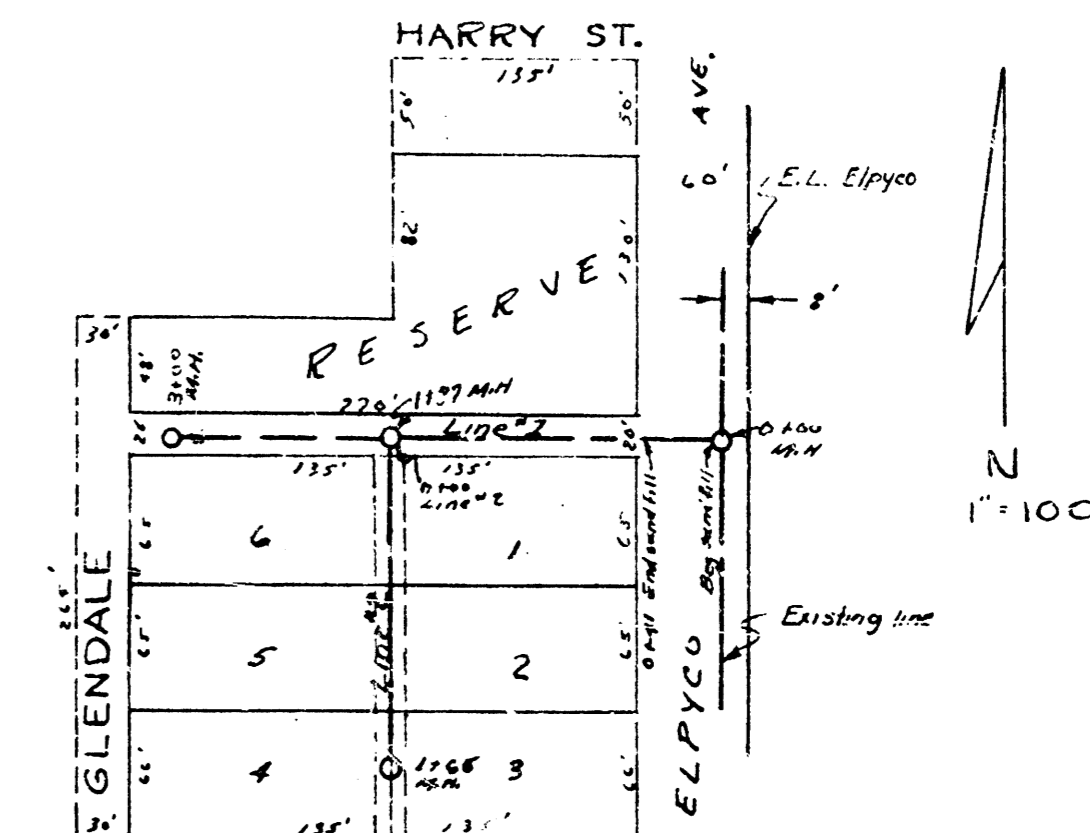
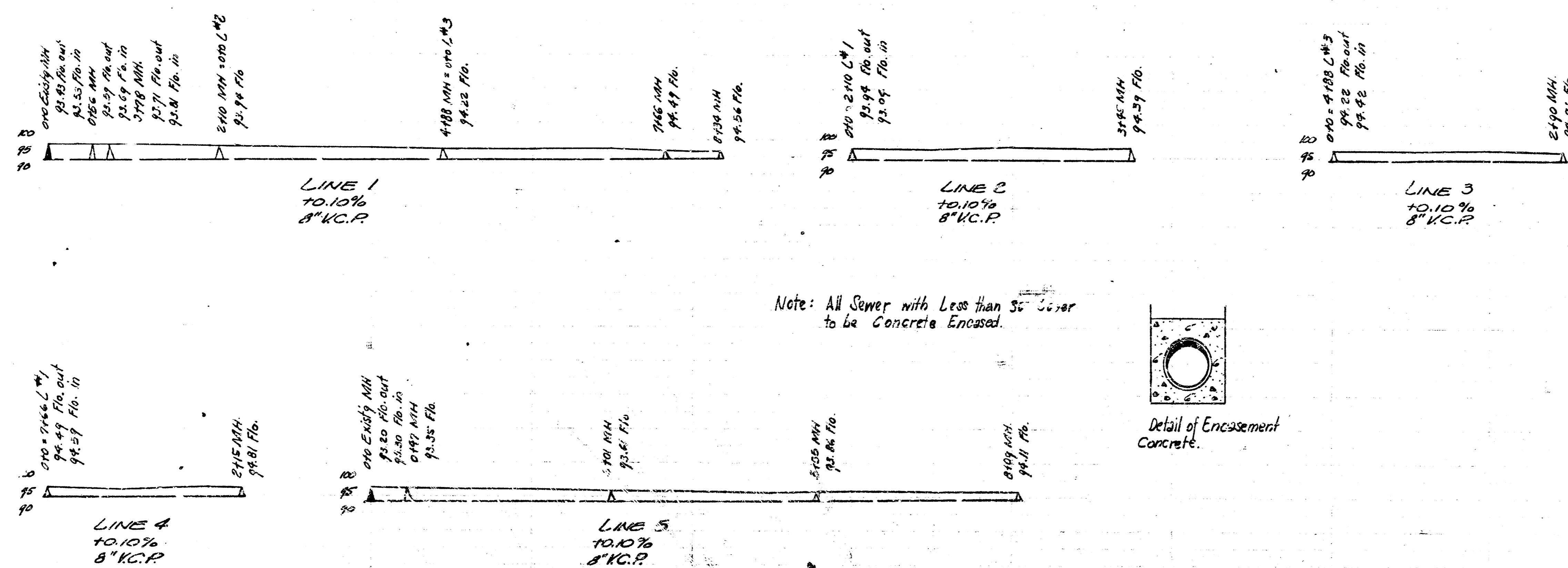


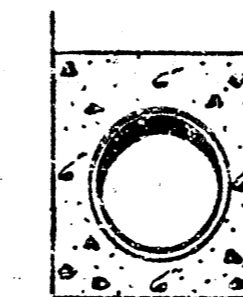
B.M. 15175 - RR spike N.S. K.G.H.E. Trans. pole 100' E. El. Elyco & S.L. Harry.
 B.M. 15186 - Al. crid. of Wk. Magnusson's res. N.E. corner.



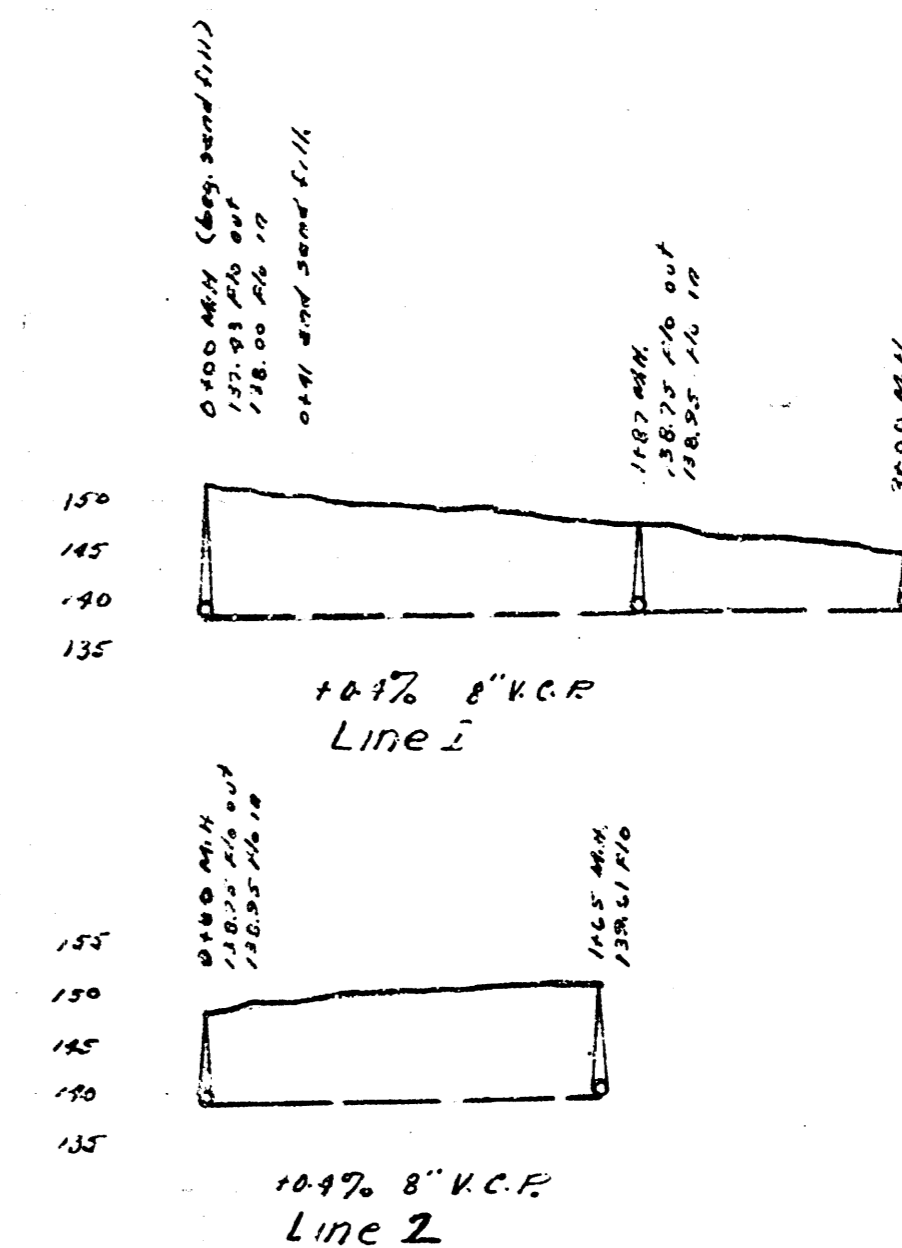
B.M. 9945 "7" in 1943 W.L. Swan, N. ob. Levy B.M. 10004 N.W. Cur porch Fla. #2215 S.S. Hodson, 2nd Has. West of Spruce



Note: All Sewer with Less than 36" Cover to be Concrete Encased.



Detail of Encasement Concrete.



Lat. 14 Dct. 15, 53rd 20
 Lat. 41, D. C. S. S.S. 12

City of Wichita, Kansas

L.K. White - City Engineer

July 1950 Proj. # C29-39
 CLO-34

14-15-12
 C29-34