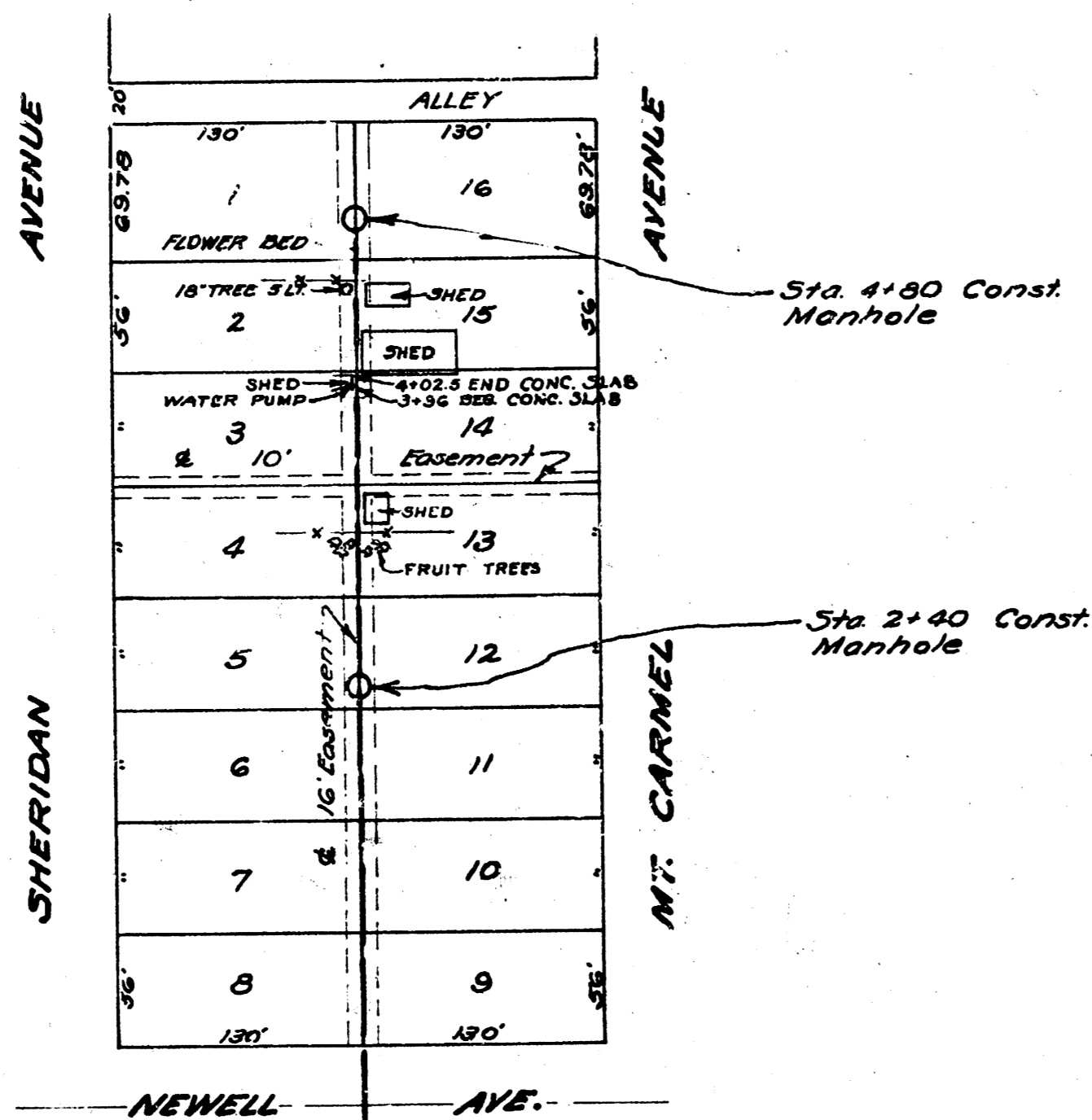


CENTRAL AVE.



SAND BACKFILL TRENCH STA 0+15 TO STA 0+45

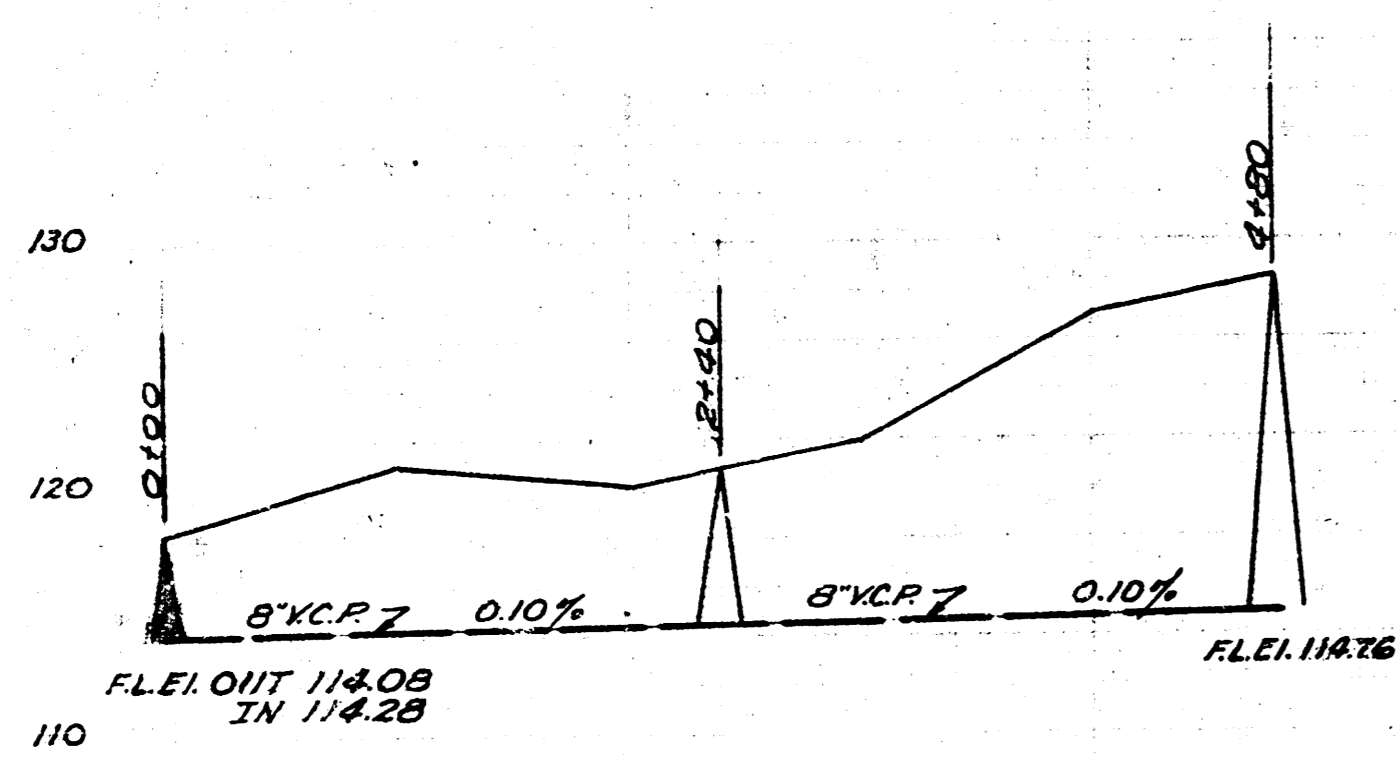
NEWELL AVE.

STA 0+00 EXISTING MANHOLE FLEI OUT 114.03

B.M. Top Valve Gas Meter No. 556 Sheridan El. 120.33

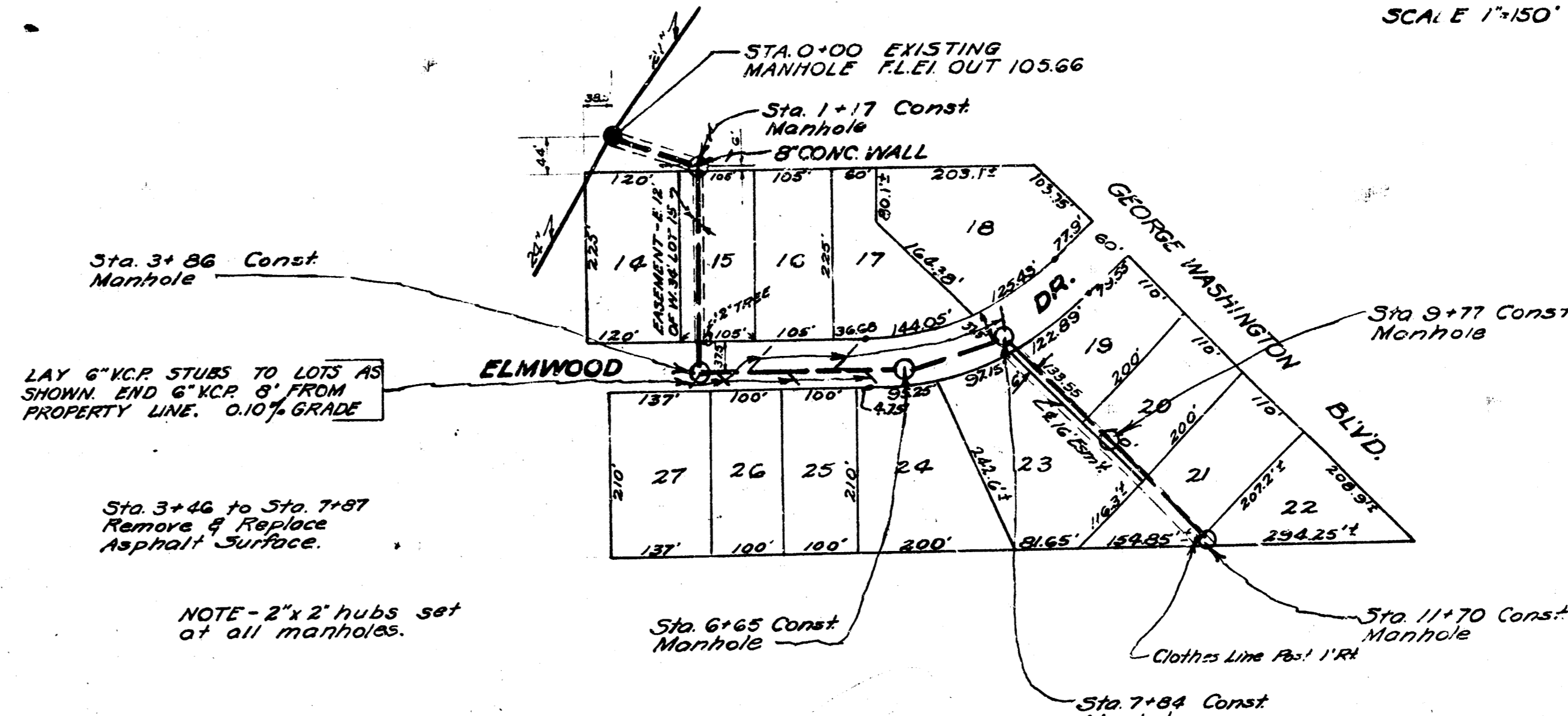
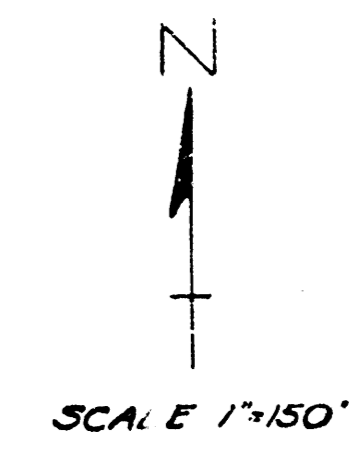
B.M. E. Rim Manhole Sta 0+00 El. 116.15

SCALE 1"=80' Horiz 1"=8' Vert.



Date 10/14/51
Drawn by J.L.A.
Checked by
Note Book No. H 1

LAT 28 DISTA MAIN 21
CITY OF WICHITA KANSAS
L.K. WHITE CITY ENGINEER
Proj. No. C21-22



STA 3+00 Const Manhole
LAY 6" V.C.P. STUBS TO LOTS AS SHOWN. END 6" V.C.P. 8' FROM PROPERTY LINE. 0.10% GRADE

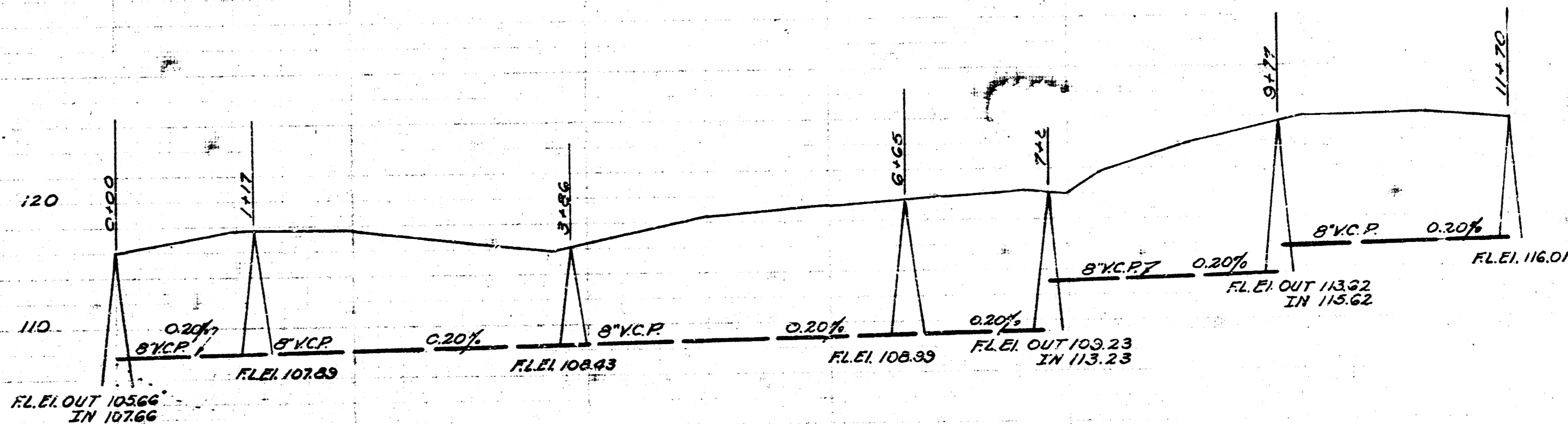
Sta 3+46 to Sta. 7+57 Remove & Replace Asphalt Surface.
NOTE - 2' x 2' hubs set at all manholes.

SAND BACKFILL TRENCH STA 3+41 TO STA 7+53

B.M. S. Rim Manhole Sta 0+00 El. 115.36

B.M. N.W. Cor. Conc. Drive 60 East Sta 11+60 El. 127.19
B.M. N.E. Cor. Conc. Curb W.S. Drive To House #3619 Elmwood El. 116.58

SCALE 1"=80' Horiz 1"=8' Vert.
Note Book No. JH 53



LAT 57 DCS #12
CITY OF WICHITA KANSAS
L.K. WHITE CITY ENGINEER
Proj. No. C21-40

