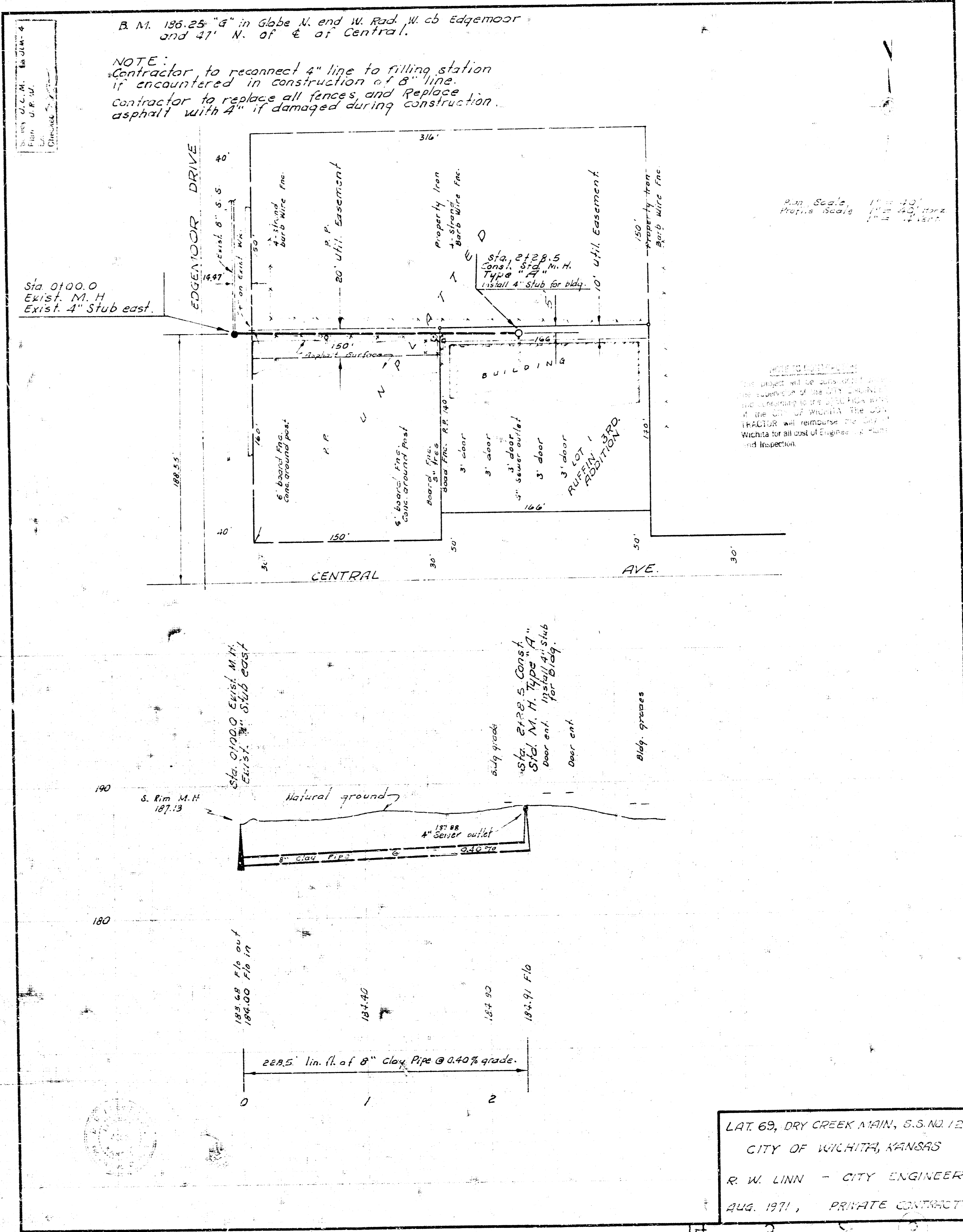


EXTENSION OF
LAT. 179, SUB. 5, S. 5.22
CITY OF WICHITA, KANSAS
B. E. SMITH, CITY ENGINEER
DATE: 4-15-1971



LAT. 69, DRY CREEK MAIN, S.S. NO. 12
CITY OF WICHITA, KANSAS
R. W. LINN - CITY ENGINEER
AUG. 1971, PRIVATE CONTRACT