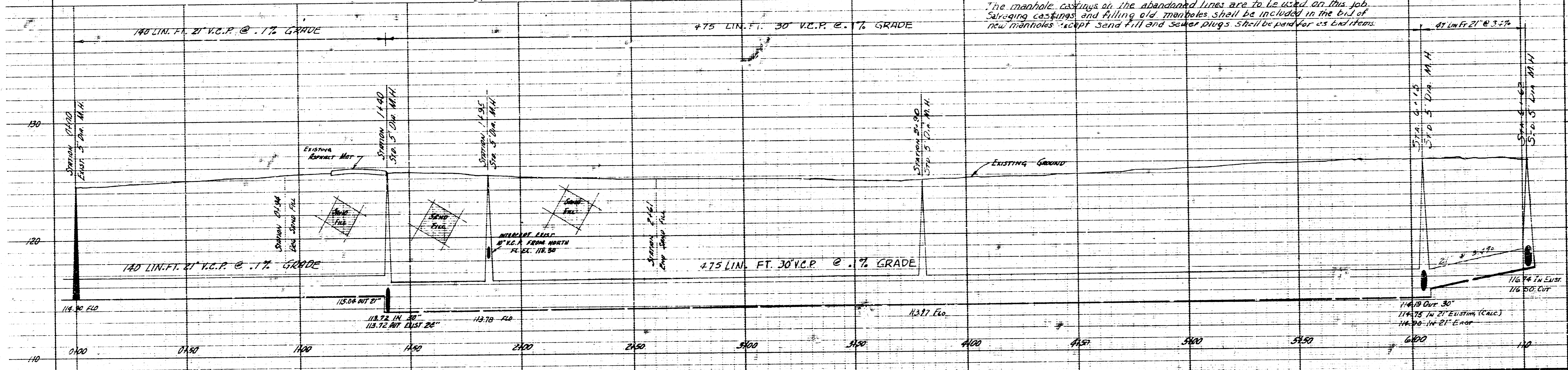


Drawn By: Denver
 Checked By: Denver

B.M. TOP OF DIRT THRU HUBWARD
 ON N.E. COR. OF BRIDGE AT BLUFF, S.
 OF MT. VERNON. ELEV. 127.91

PLAN SCALE 1" = 20'
 PROFILE SCALE 1" = 20' HOR, 1" = 4' VERT.

NOTE: The manhole castings on the abandoned lines are to be used on this job. Stripping castings and filling old manholes shall be included in the bid of new manholes except sand fill and sewer plugs shall be paid for as bid items.



RELOCATION OF SAN SEWERS IN
 CONNECTION WITH THE PAVING OF MT.
 VERNON FROM E.L. BLUFF TO W.L. BLUFF
 CITY OF WICHITA, KANSAS
 B.E. SMITH CITY ENGINEER
 PROJ. NO. C16-41 DATE AUG. 1957