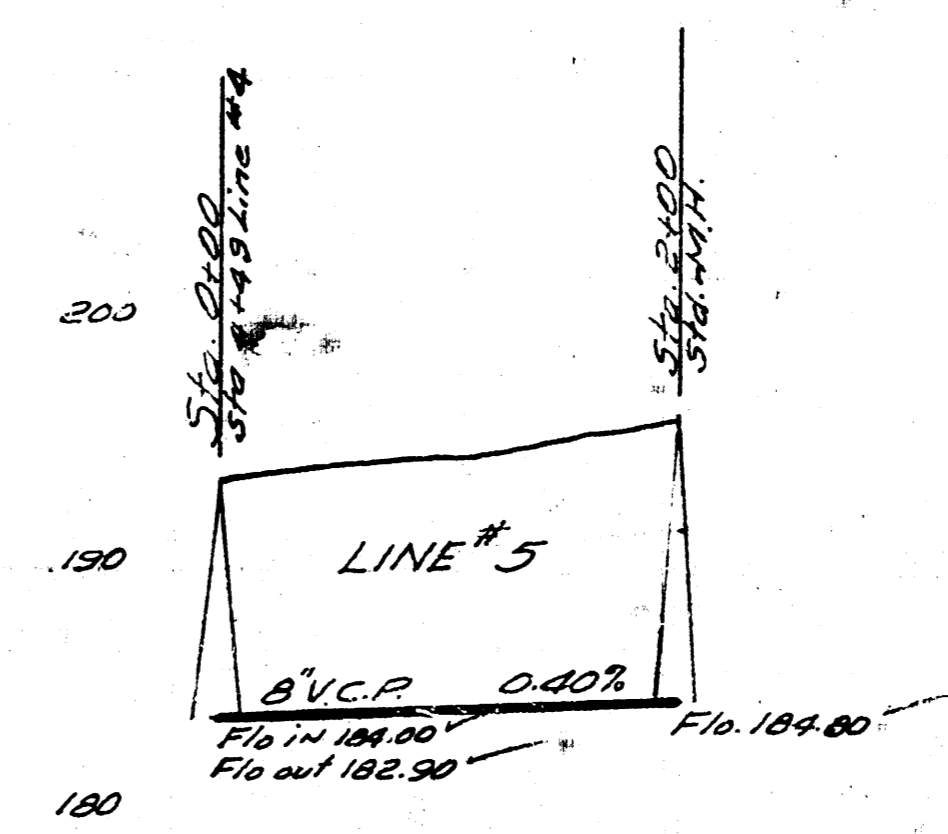
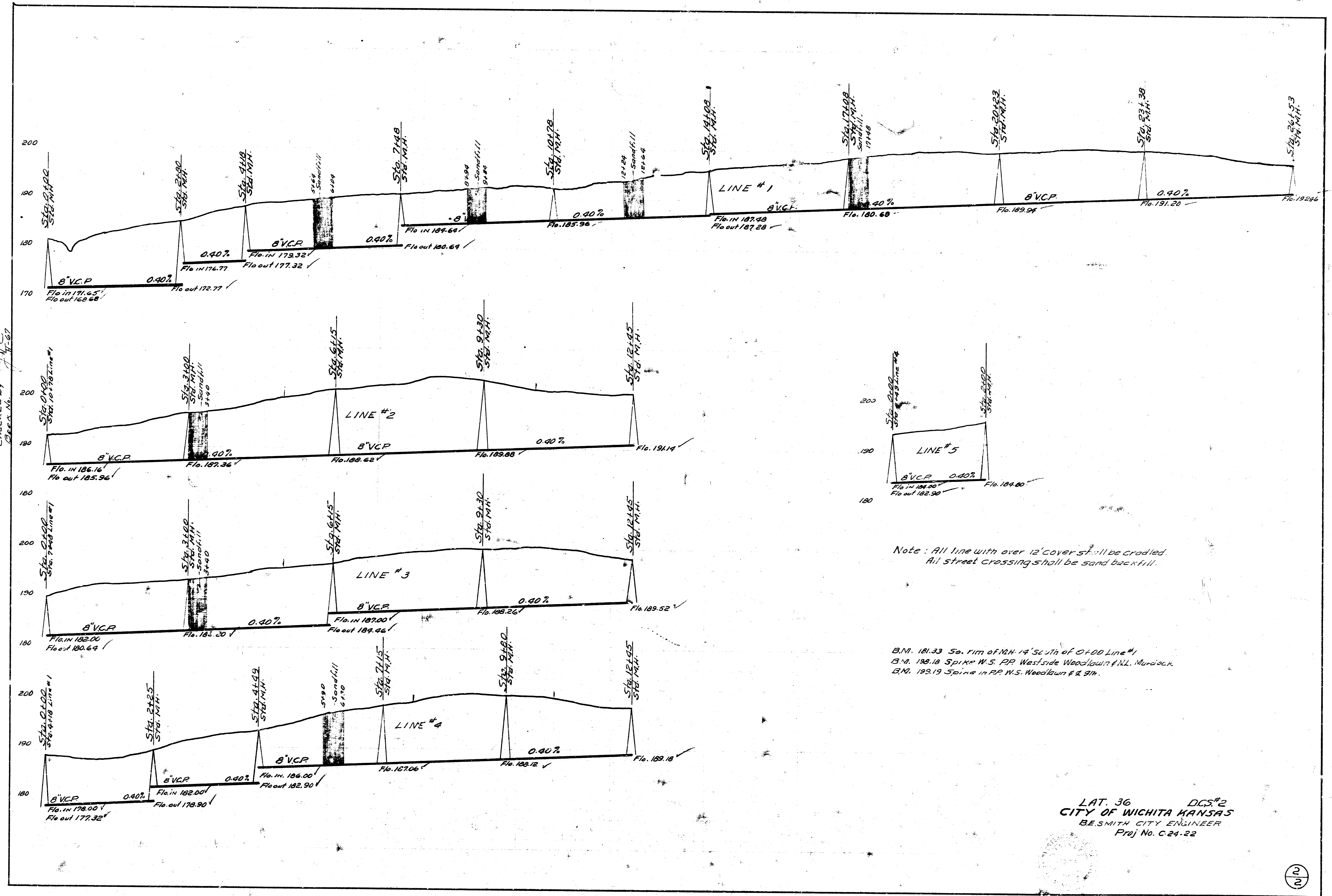


Date  
Drawn by  
Checked by  
Sheet No.



Note: All line with over 12' cover shall be cradled.  
All street crossing shall be sand backfill.

B.M. 181.33 Sp. 11th of 12th 14' South of C+D Line #1  
B.M. 188.18 Spike W.S. RR Westside Woodlawn P.K.L. Murdoch.  
B.M. 199.19 Spike in RR W.S. Woodlawn 8' x 9".

LAT. 36 DCS#2  
CITY OF WICHITA KANSAS  
B.E. SMITH CITY ENGINEER  
Proj No. C-24-22