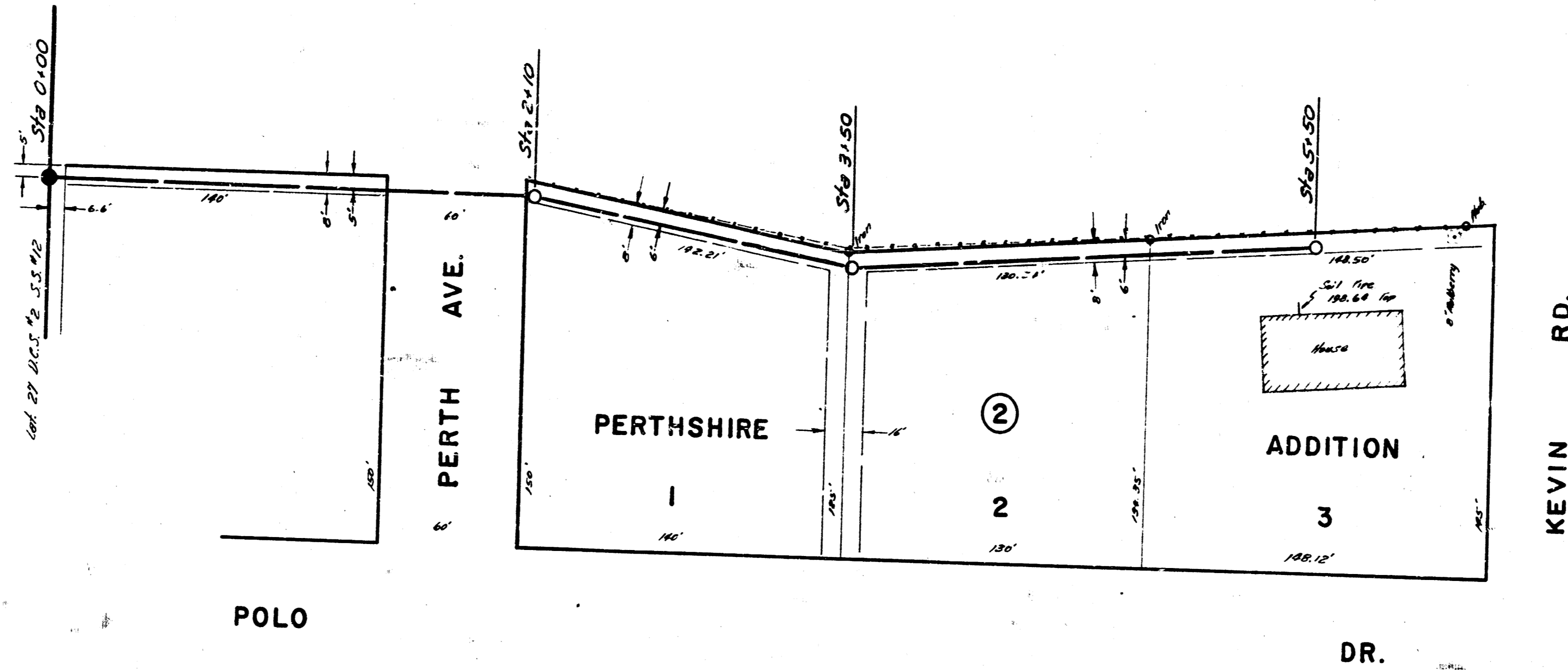
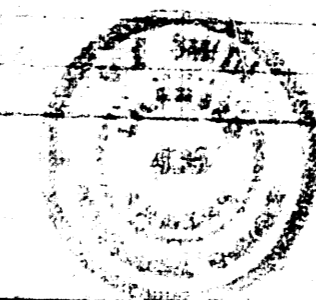
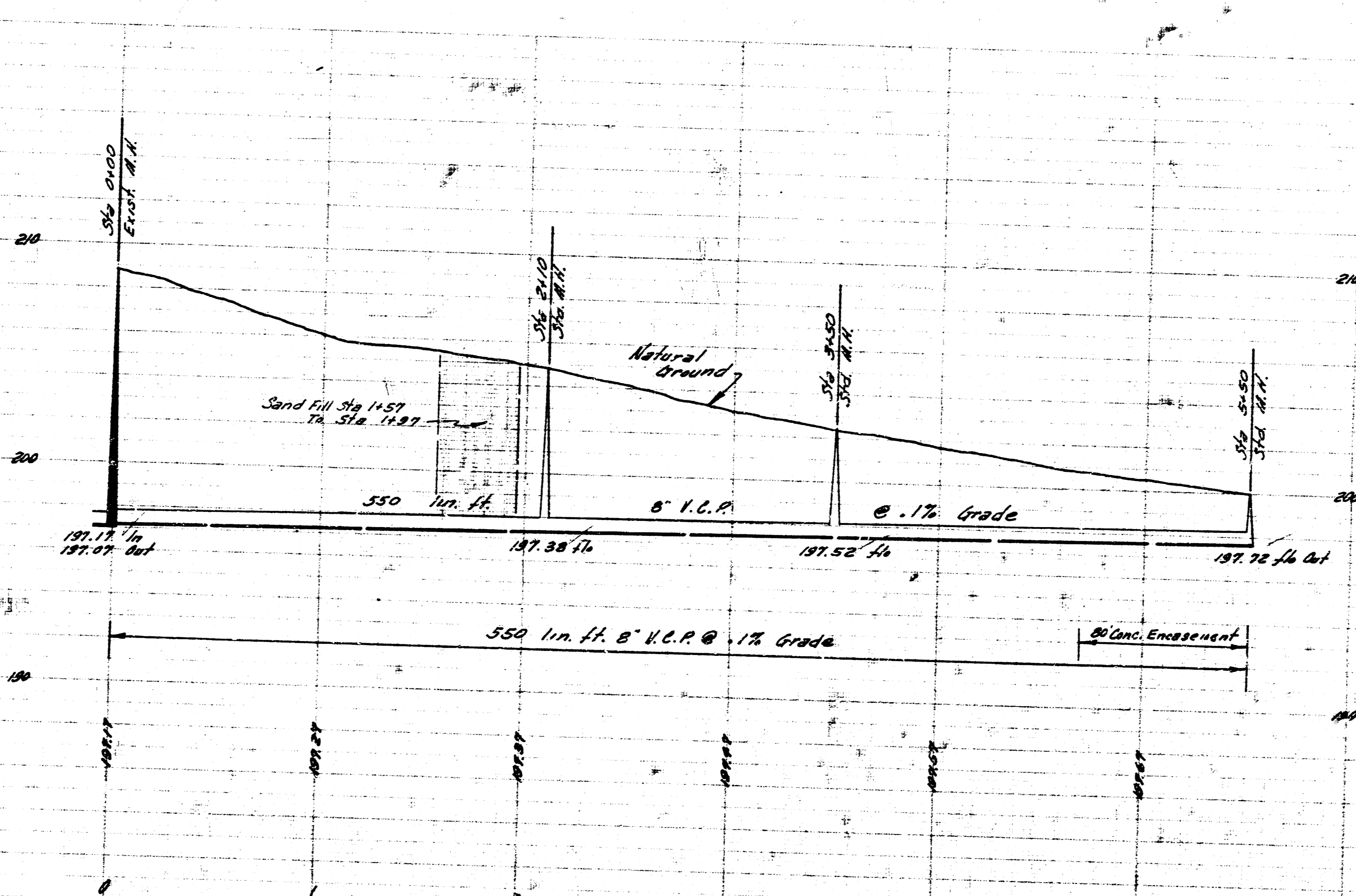


Survey by W. H. Smith
 Survey of - Perthshire
 Survey of - Kevin
 Survey of - Polo
 Survey of - Perth Ave.

24. 200.53 N.W. Cor. 1st Step No. SW. Cor. Polo & Kevin
 24. 205.17 "R" in Retain. So. Ch. Polo Drive W. N. E. 2nd Addn.



Plan Scale 1"=40'
 Profile Scale 1"=40' Hor, 1"=4' Vertical



Lot 46 D.C.S. #2 San Sewer 12
 City of Wichita, Kansas
 W. H. Smith City Engineer
 Proj. No. C76-51 Date - Oct. 1956