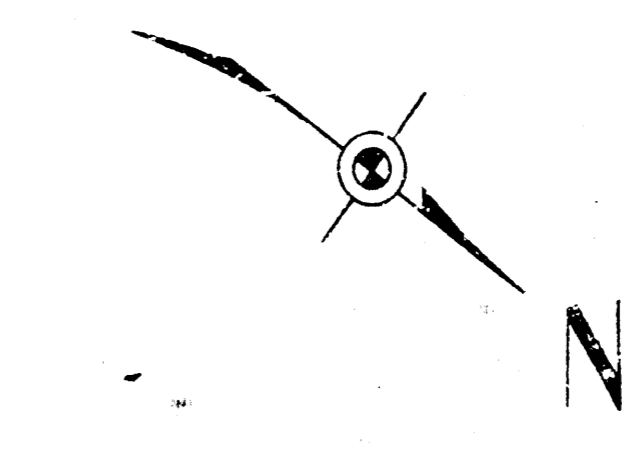
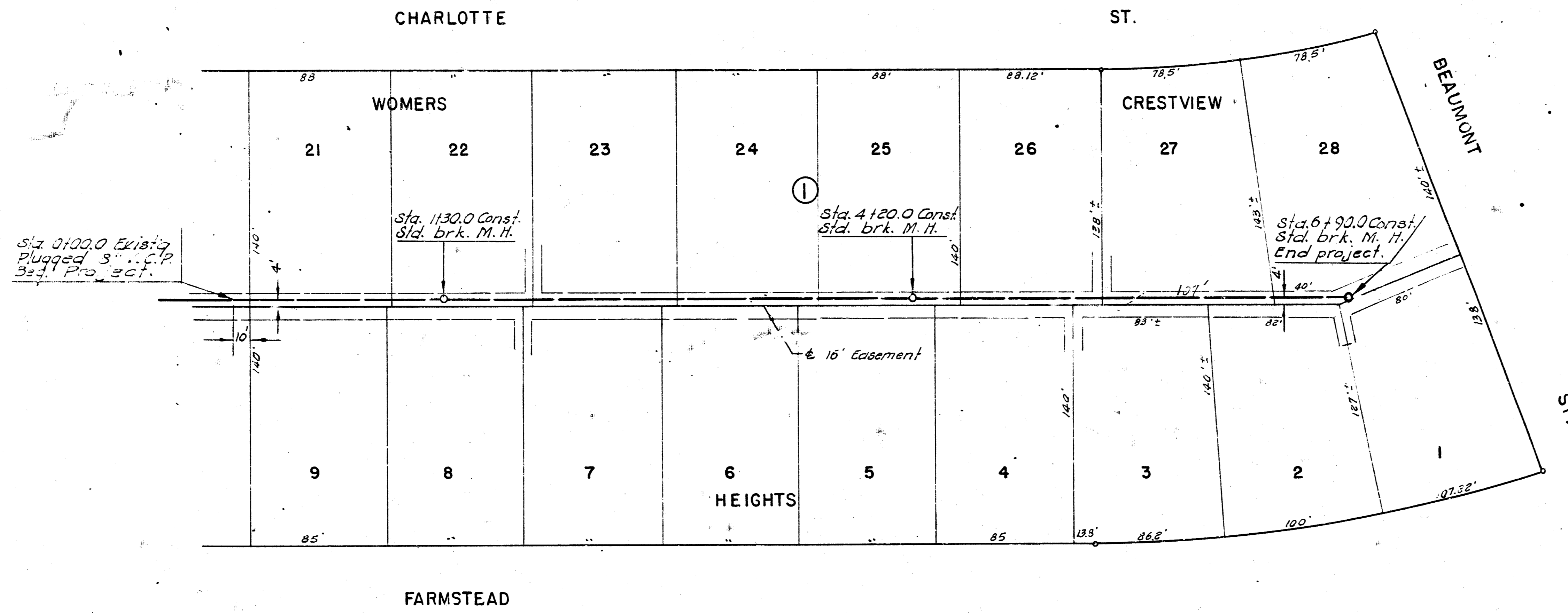
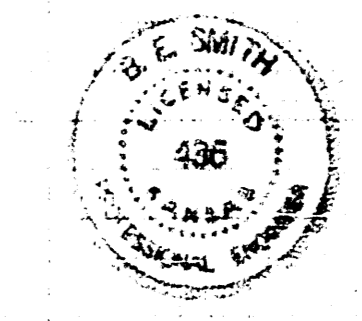
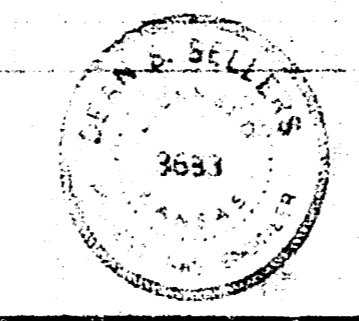
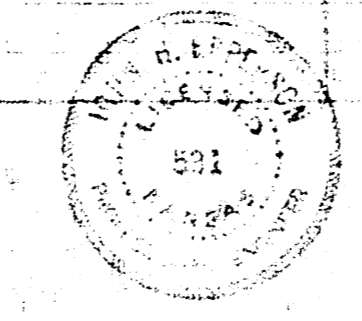
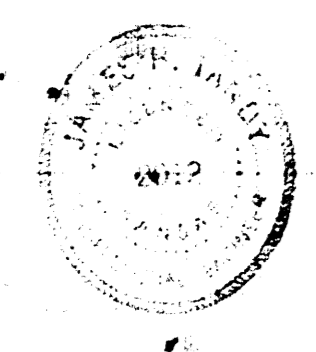
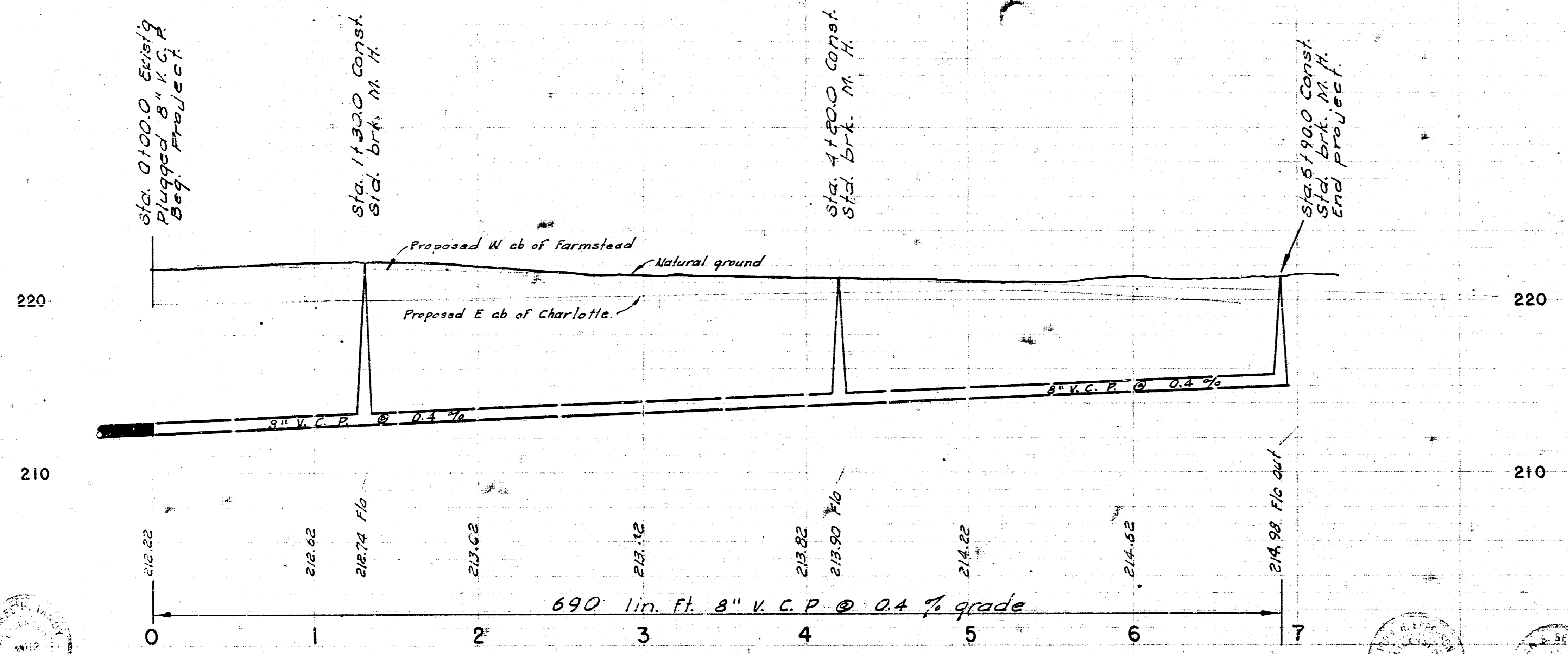


Survey by J. Young Sk. No. 187-y
 Sta. 100.0
 Crestview Heights



Plan Scale 1" = 40'
 Profile Scale 1" = 40' Hor.
 1" = 4' Vert.

B. M. 221.06 R. R. Spike NE Side HLP 10' W. of 1/4 Sec.
 cor. @ SW cor. Crestview Heights 2nd. Adn.



LAT. 22, D.C.S. NO. 2, S. S. NO. 12
 CITY OF WICHITA, KANSAS
 B. E. SMITH CITY ENGINEER
 AUG. 1963 PROJECT NO. C27-78