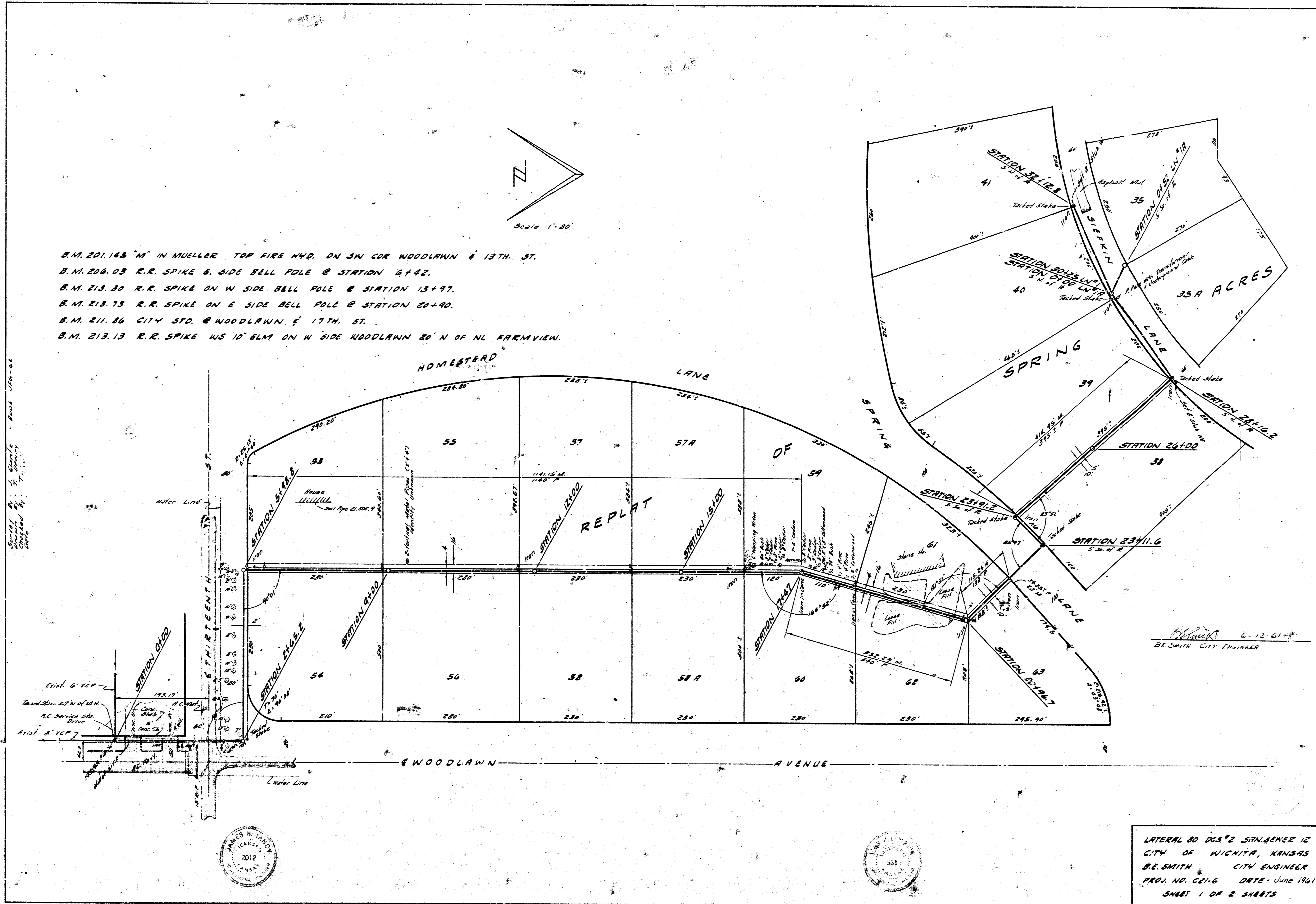
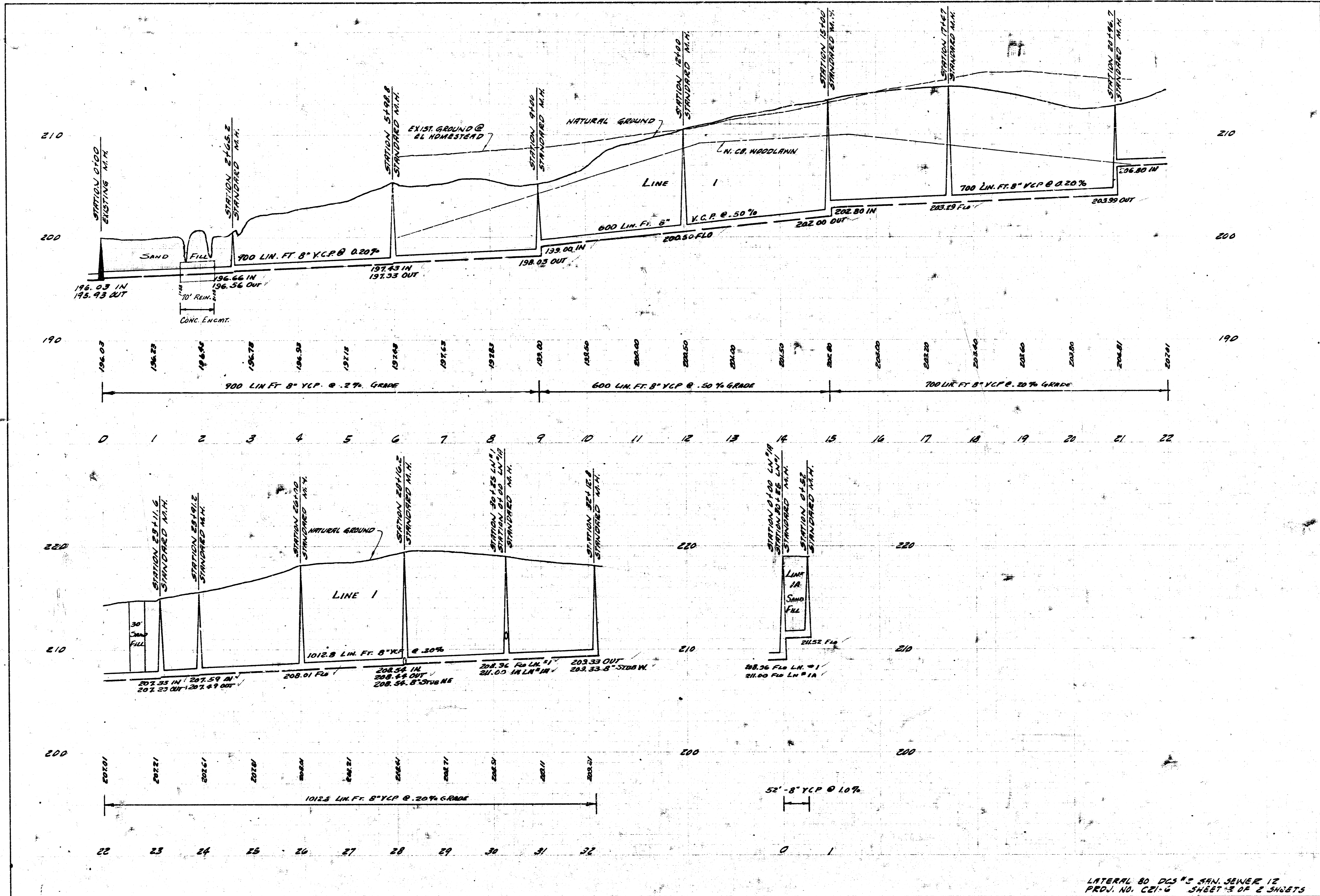


B.M. 201.145 "M" IN MUELLER TOP FIRE HYD. ON SW COR WOODLAWN & 13TH ST.
B.M. 206.03 R.R. SPIKE E. SIDE BELL POLE @ STATION 6+42.
B.M. 213.30 R.R. SPIKE ON W SIDE BELL POLE @ STATION 13+97.
B.M. 213.73 R.R. SPIKE ON E SIDE BELL POLE @ STATION 20+90.
B.M. 211.86 CITY STD. @ WOODLAWN & 17TH ST.
B.M. 213.13 R.R. SPIKE WS 10' ELM ON W SIDE WOODLAWN 20' N OF NL FARMVIEW.



B.E. Smith 6-12-61
B.E. SMITH CITY ENGINEER

LATERAL 80 DCS 2 STATION 12
CITY OF WICHITA, KANSAS
B.E. SMITH CITY ENGINEER
PROJ. NO. 621-6 DATE - June 1961
SHEET 1 OF 2 SHEETS



LATERAL 80 DCS 8" SAN. SEWER 12
 PROJ. NO. CEI-6 SHEET 5 OF 2 SHEETS