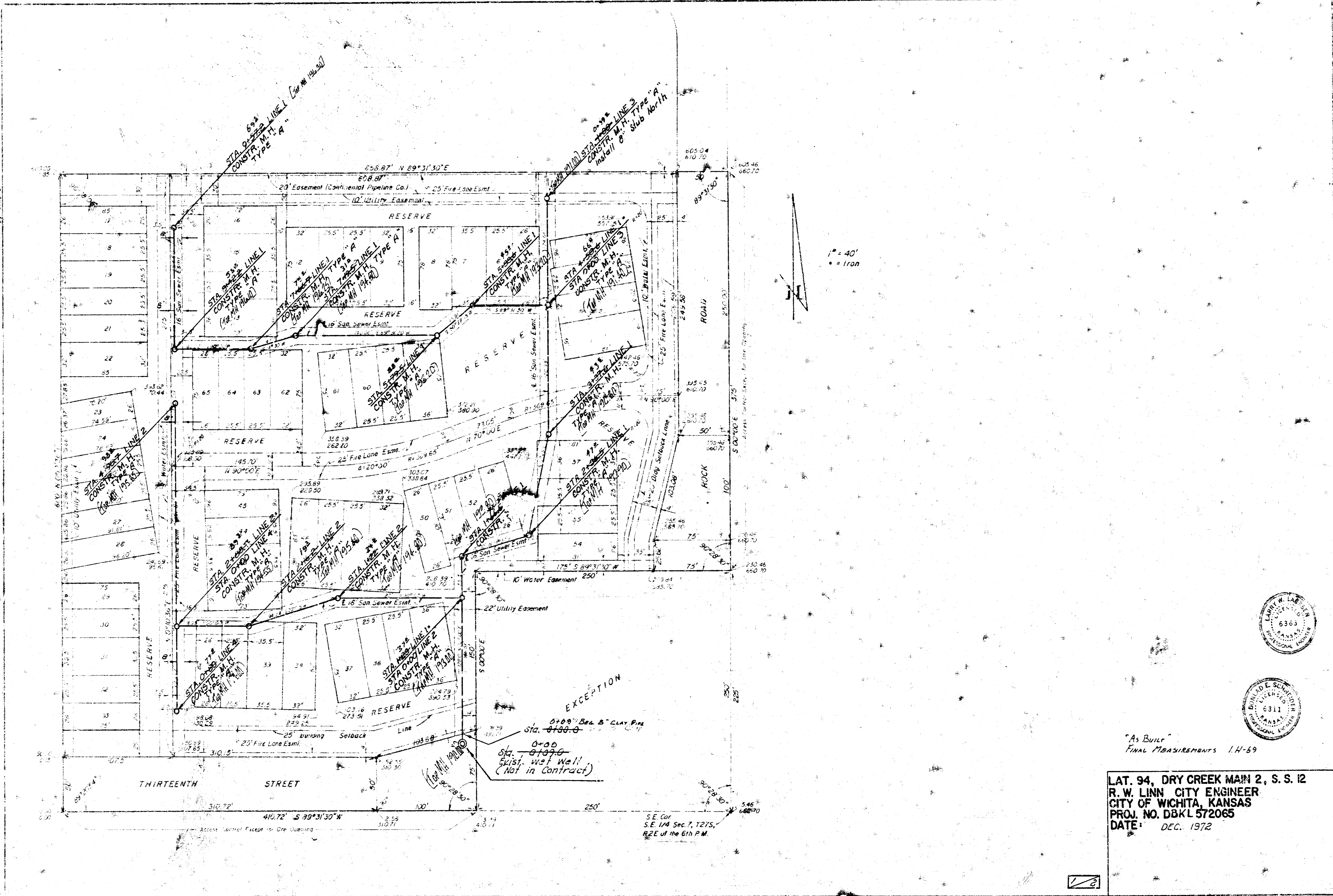
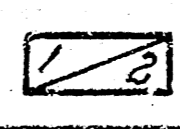


Plan by
C.R.W.
Survey by others



"As Built"
Final Measurements 1-H-59

LAT. 94, DRY CREEK MAIN 2, S. S. 12
R. W. LINN, CITY ENGINEER
CITY OF WICHITA, KANSAS
PROJ. NO. DBKL 572065
DATE: DEC. 1972



SANITARY SEWER FORCE MAIN
&
PUMPING STATION

SERVING
LEISURE LIVING FIRST ADDITION
WICHITA, KANSAS

MOEHRING & ASSOCIATES
CONSULTING ENGINEERS
WICHITA
1972



INDEX

SHEET NO.	DESCRIPTION
2	PLAN & PROFILE
3	STREET CROSSING & MISC DETAILS
4	SEWAGE PUMPING STATION

SANITARY SEWER FORCE MAIN
&
PUMPING STATION

SERVING
LEISURE LIVING FIRST ADDITION
WICHITA, KANSAS

MOHRING & ASSOCIATES
CONSULTING ENGINEERS

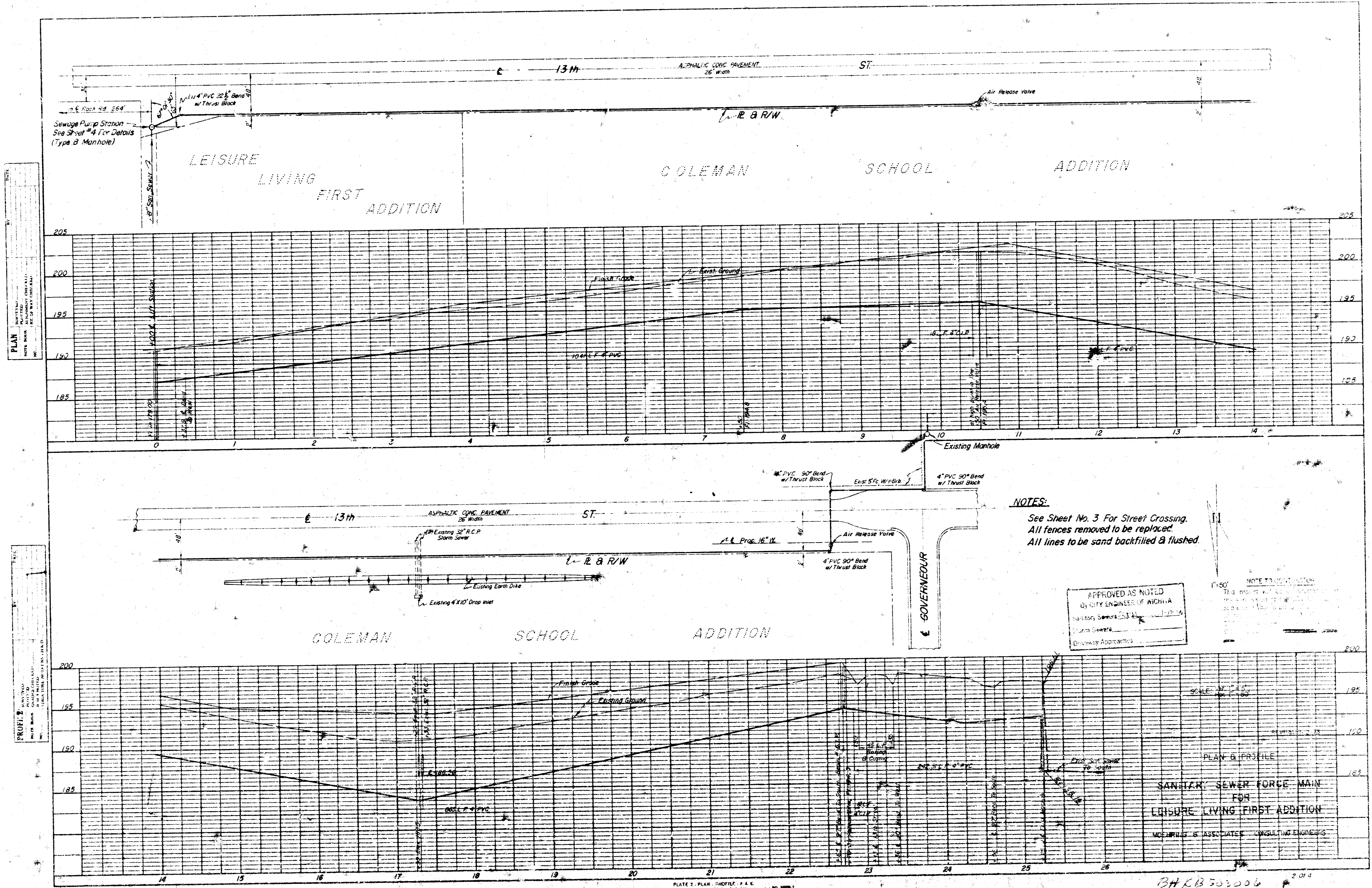
WICHITA

1972



INDEX

<u>SHEET NO.</u>	<u>DESCRIPTION</u>
2	PLAN & PROFILE
3	STREET CROSSING & MISC. DETAILS
4	SEWAGE PUMPING STATION



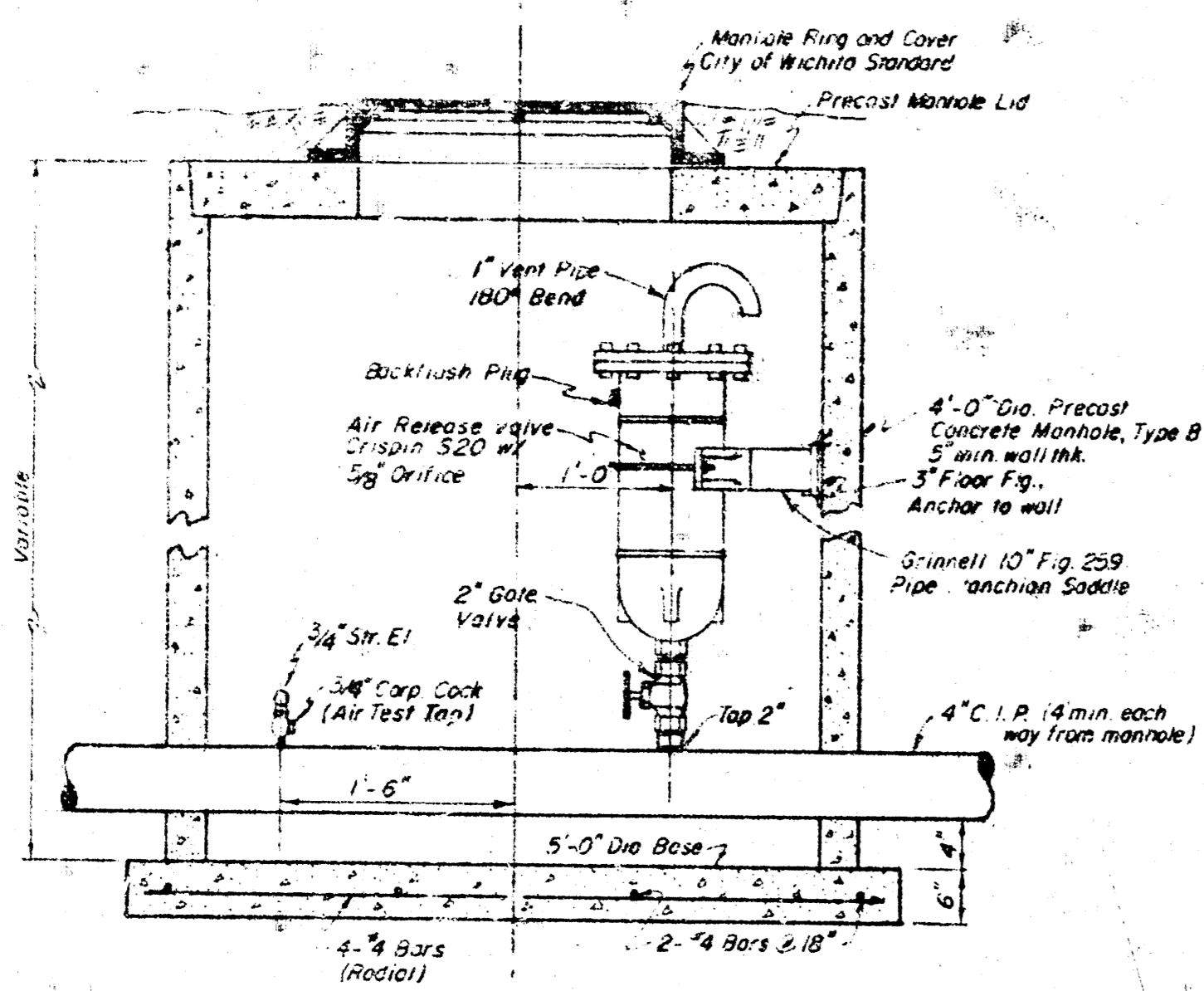
PLAN
 SHEET NO. 1
 DATE: 10/1/54
 SCALE: 1" = 40'

PROFILE
 SHEET NO. 1
 DATE: 10/1/54
 SCALE: 1" = 10'

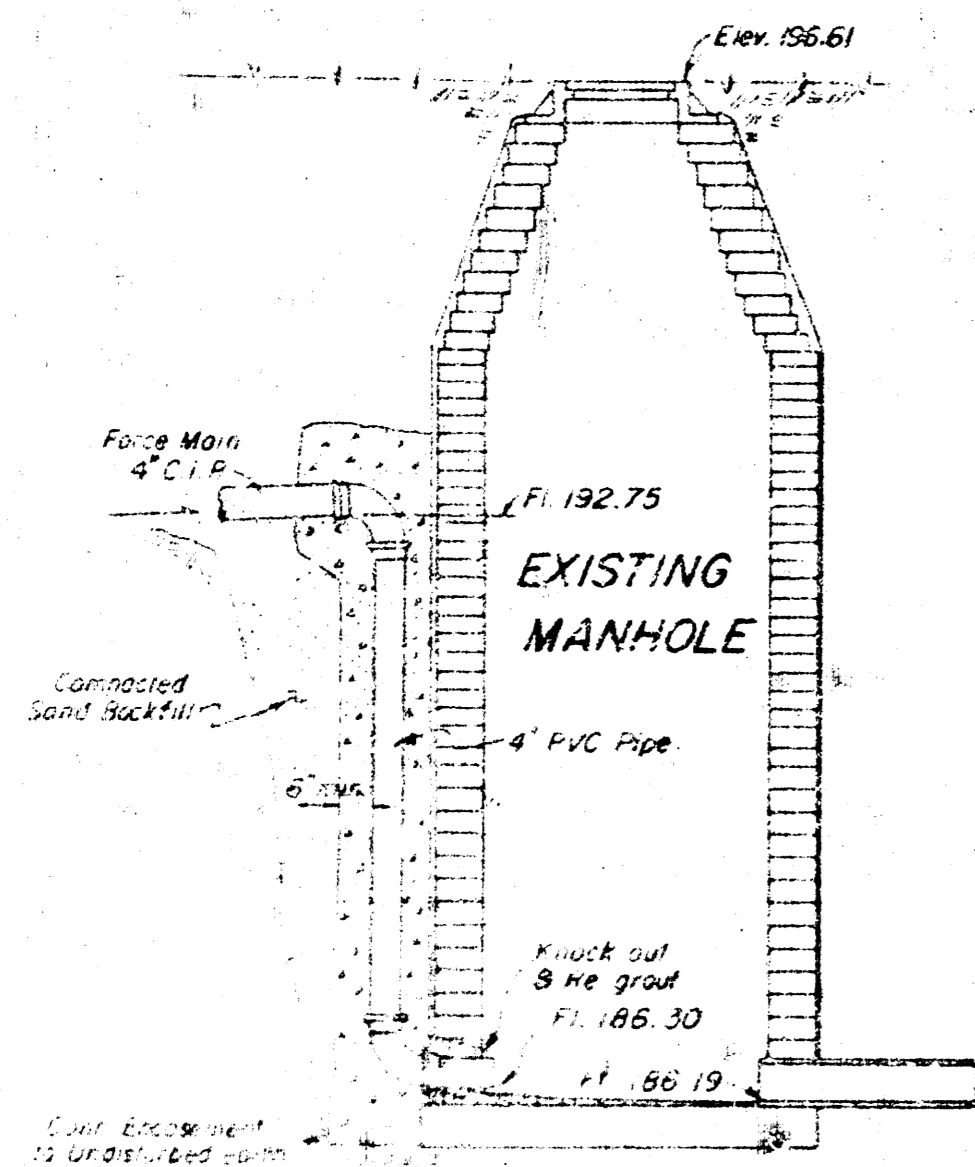
NOTES:
 See Sheet No. 3 For Street Crossing.
 All fences removed to be replaced.
 All lines to be sand backfilled & flushed.

APPROVED AS NOTED
 BY CITY ENGINEER OF MOBILE
 SANITARY SEWER DISTRICT NO. 1
 PUBLIC WORKS DEPARTMENT
 MOBILE, ALABAMA

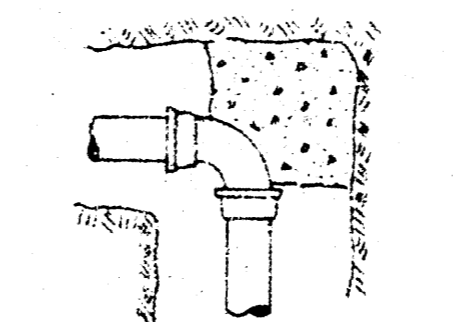
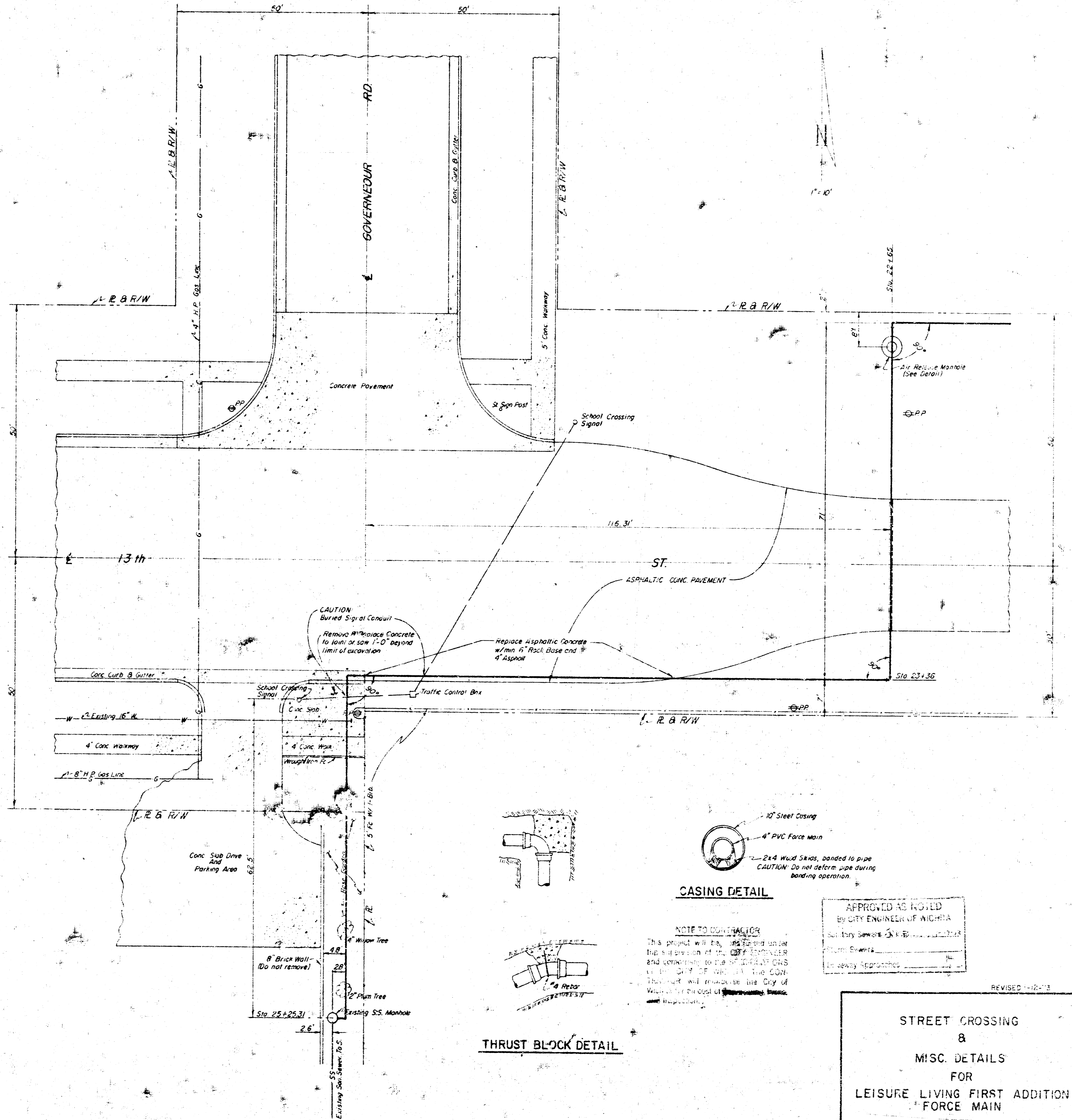
PLAN & PROFILE
 SANITARY SEWER FORCE MAIN
 FOR
 LEISURE LIVING FIRST ADDITION
 MOHRMILLER & ASSOCIATES CONSULTING ENGINEERS



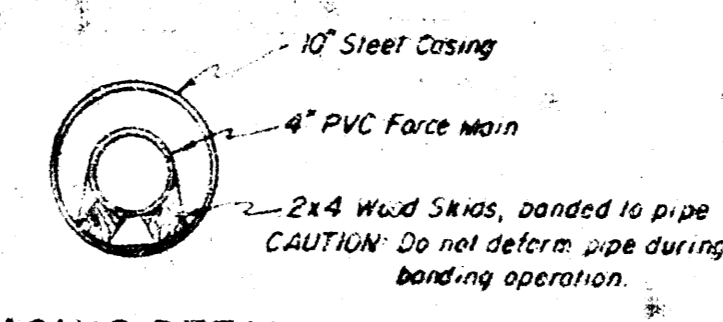
AIR RELEASE VALVE MANHOLE
2 REQ'D



OUTSIDE DROP DETAIL
AT EXISTING MANHOLE



THRUST BLOCK DETAIL



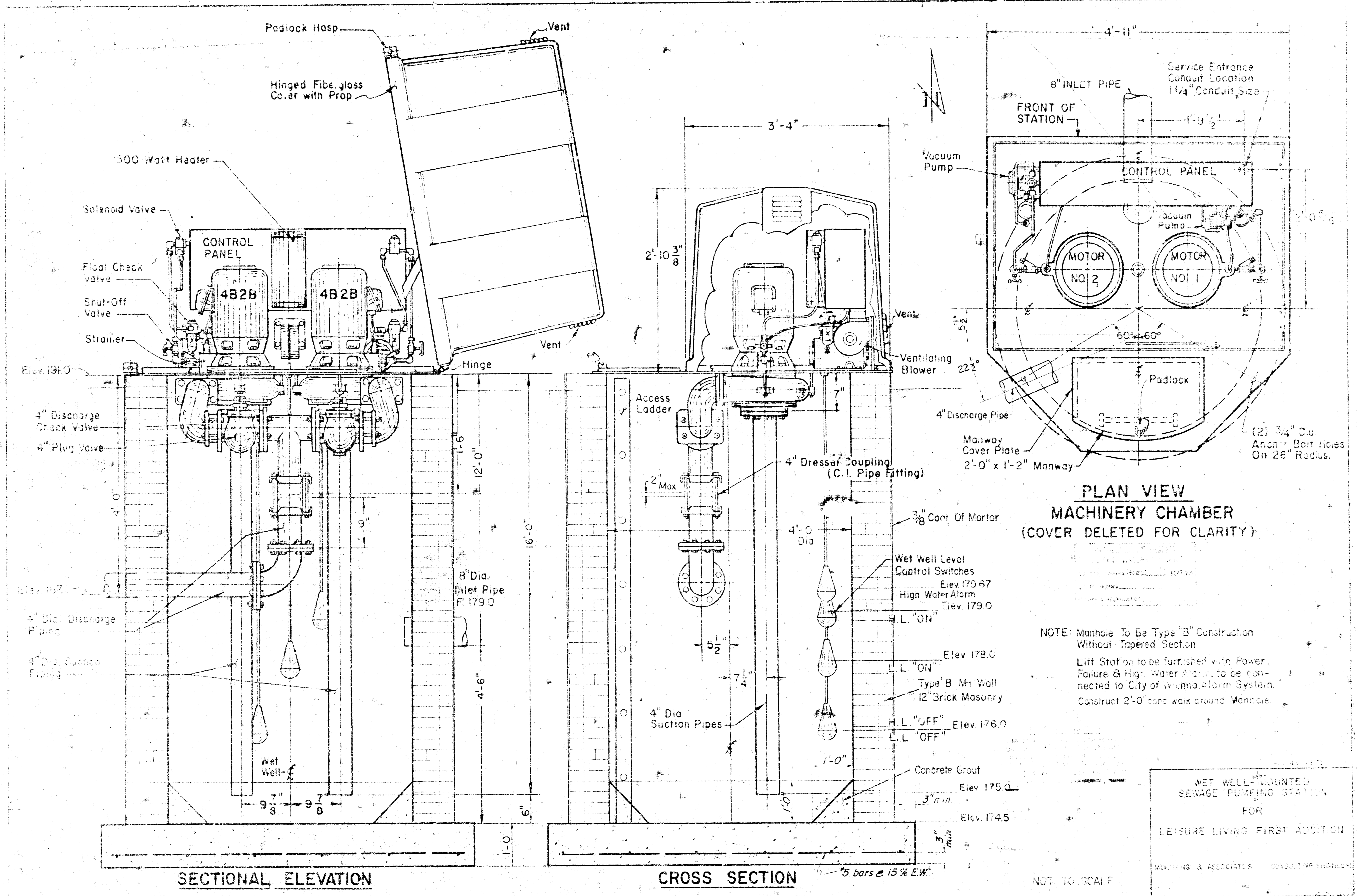
CASING DETAIL

NOTE TO CONTRACTOR
This project will be installed under the supervision of the City Engineer and conforming to the specifications of the City of Wichita. The contractor will be responsible for the design and construction of the project.

APPROVED AS NOTED
By CITY ENGINEER OF WICHITA
[Signature]

STREET CROSSING
&
MISC. DETAILS
FOR
LEISURE LIVING FIRST ADDITION
FORCE MAIN
MOEHNING & ASSOCIATES CONSULTING ENGINEERS

REVISED 1-12-13



SECTIONAL ELEVATION

CROSS SECTION

PLAN VIEW
MACHINERY CHAMBER
(COVER DELETED FOR CLARITY)

NOTE: Manhole to be Type "B" Construction Without Tapered Section.
Lift Station to be furnished with Power, Failure & High Water Alarm, to be connected to City of Waukegan Alarm System. Construct 2'-0" concrete walk around Manhole.

WET WELL MOUNTED
SEWAGE PUMPING STATION
FOR
LEISURE LIVING FIRST ADDITION

NOT TO SCALE