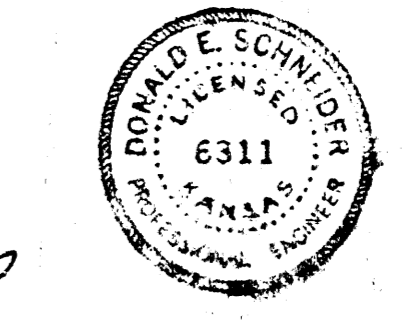
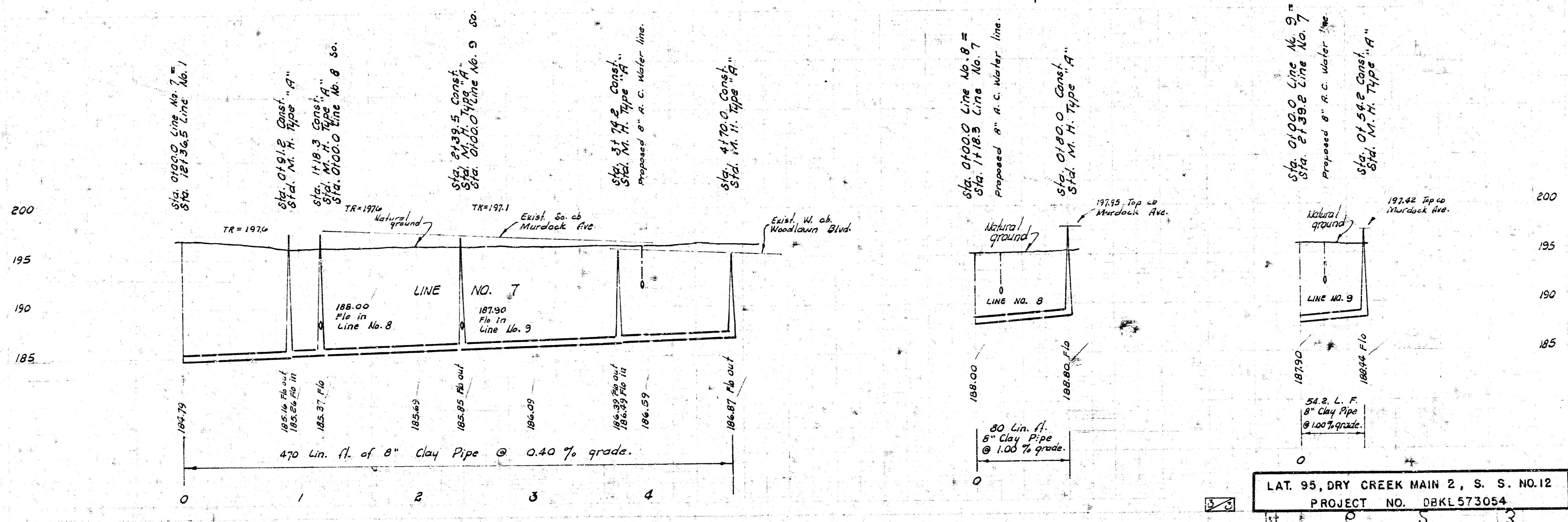
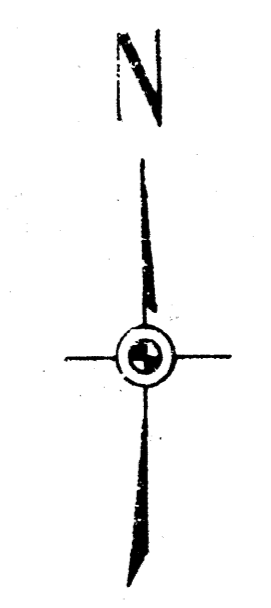
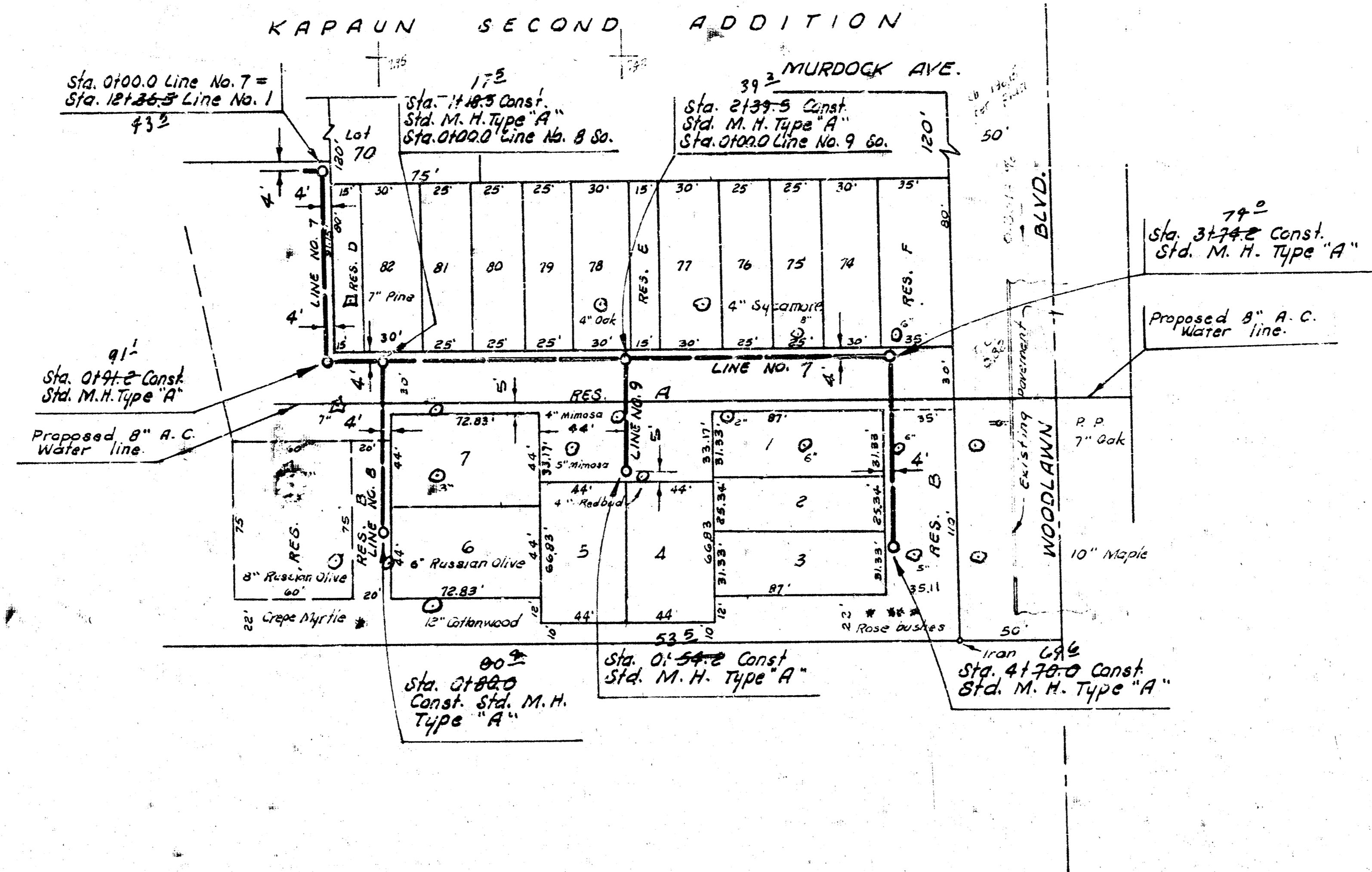


- B. M. 151.33 So. Rim of M.H. 14' S. of 0100.0 Line No. 1 - This M.H. is 230' W. of M.H. shown on Admn. Plat.
- B. M. 189.42 SE cor. conc. parch 6002 Murdock.
- B. M. 194.42 "T" top N. cb Murdock 12' W. of W.L. Marjorie Walk: Murdock - Marjorie.
- B. M. 201.18 SE cor. bot. conc. step 6302 Murdock.



LAT. 95, DRY CREEK MAIN 2, S. S. NO. 12
CITY OF WICHITA, KANSAS
R. W. LINN - CITY ENGINEER
DEC. 1973 PROJECT NO. DBKL 573054

B. M. 20118 SE cor. bot. Conc. Step
No. # 6302 Murdock.



LAT. 95, DRY CREEK MAIN 2, S. S. NO. 12
PROJECT NO. DBKL573054