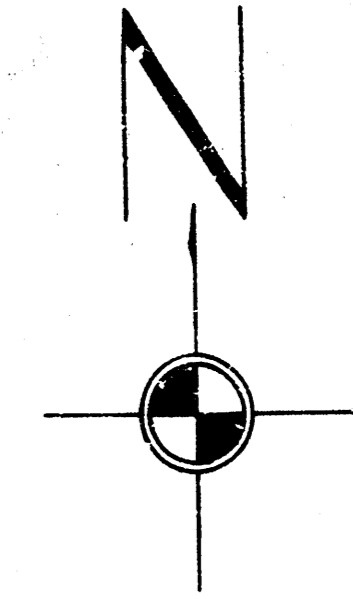
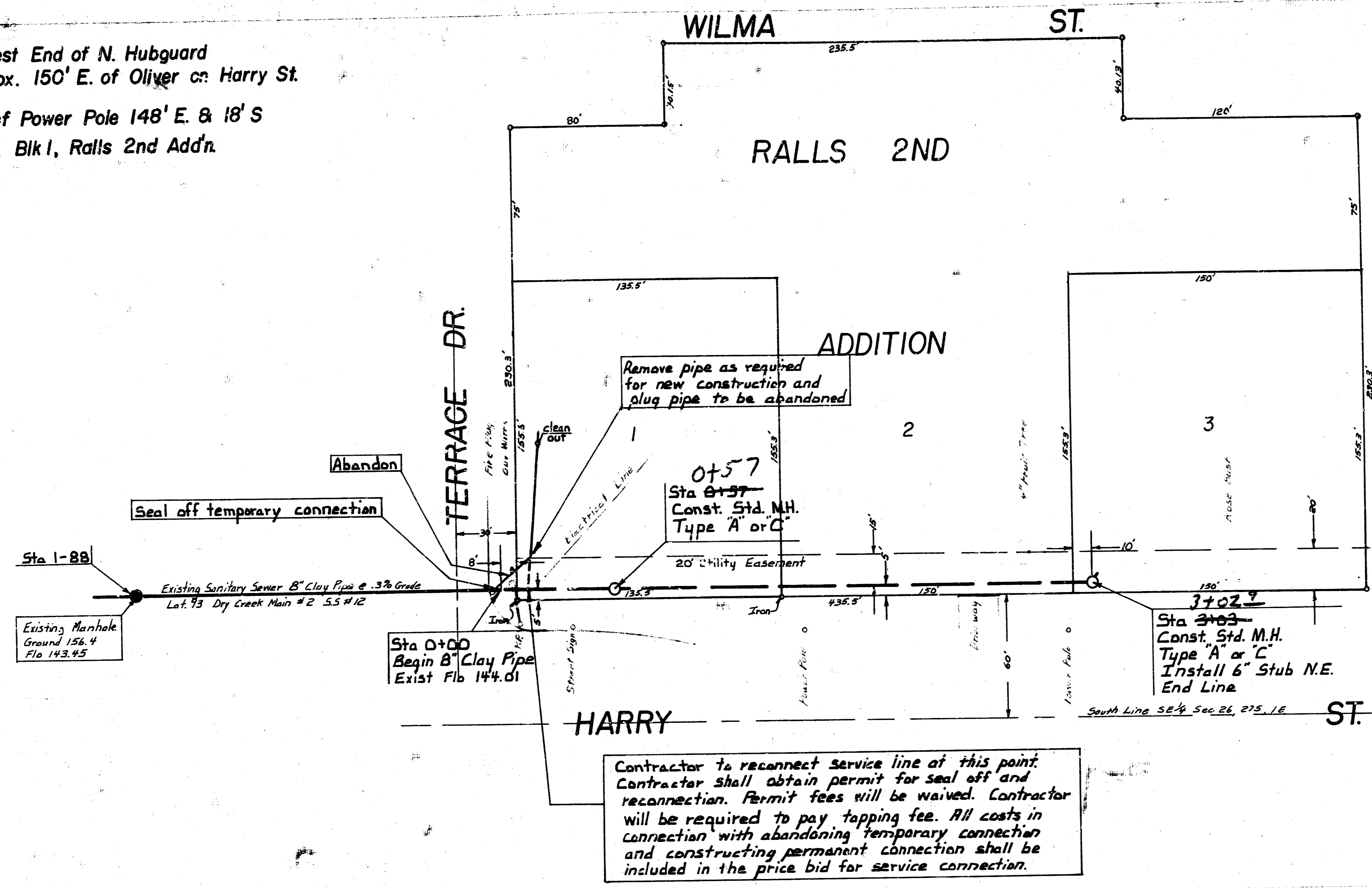


BM 142.43 City Std. Disc on West End of N. Hubguard
to new R.C.B. Approx. 150' E. of Oliver on Harry St.

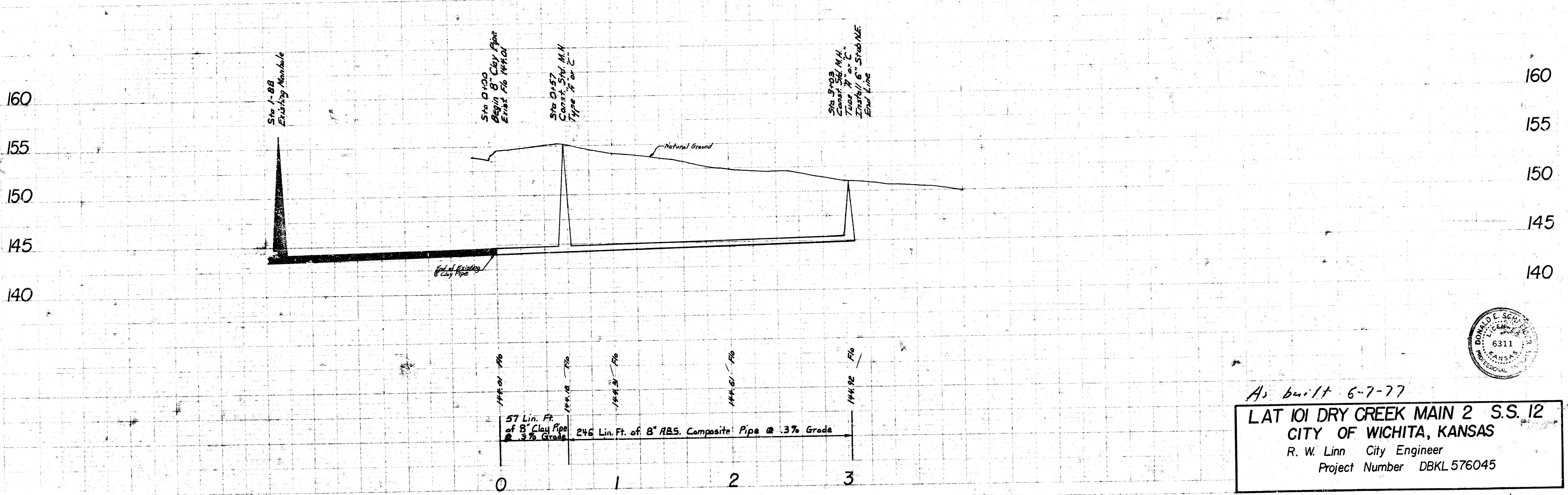
BM 152.19 R.R. Spike N. Side of Power Pole 148' E. & 18' S
of SE. Cor. of Lot 1, Blk 1, Ralls 2nd Add'n.



Plan Scale 1" = 40'
Profile Scale 1" = 40' Hor.
1" = 5' Vert.



Contractor to reconnect service line of this point
Contractor shall obtain permit for seal off and
reconnection. Permit fees will be waived. Contractor
will be required to pay tapping fee. All costs in
connection with abandoning temporary connection
and constructing permanent connection shall be
included in the price bid for service connection.



As built 6-7-77

LAT 101 DRY CREEK MAIN 2 S.S. 12
CITY OF WICHITA, KANSAS
R. W. Linn City Engineer
Project Number DBKL 576045

