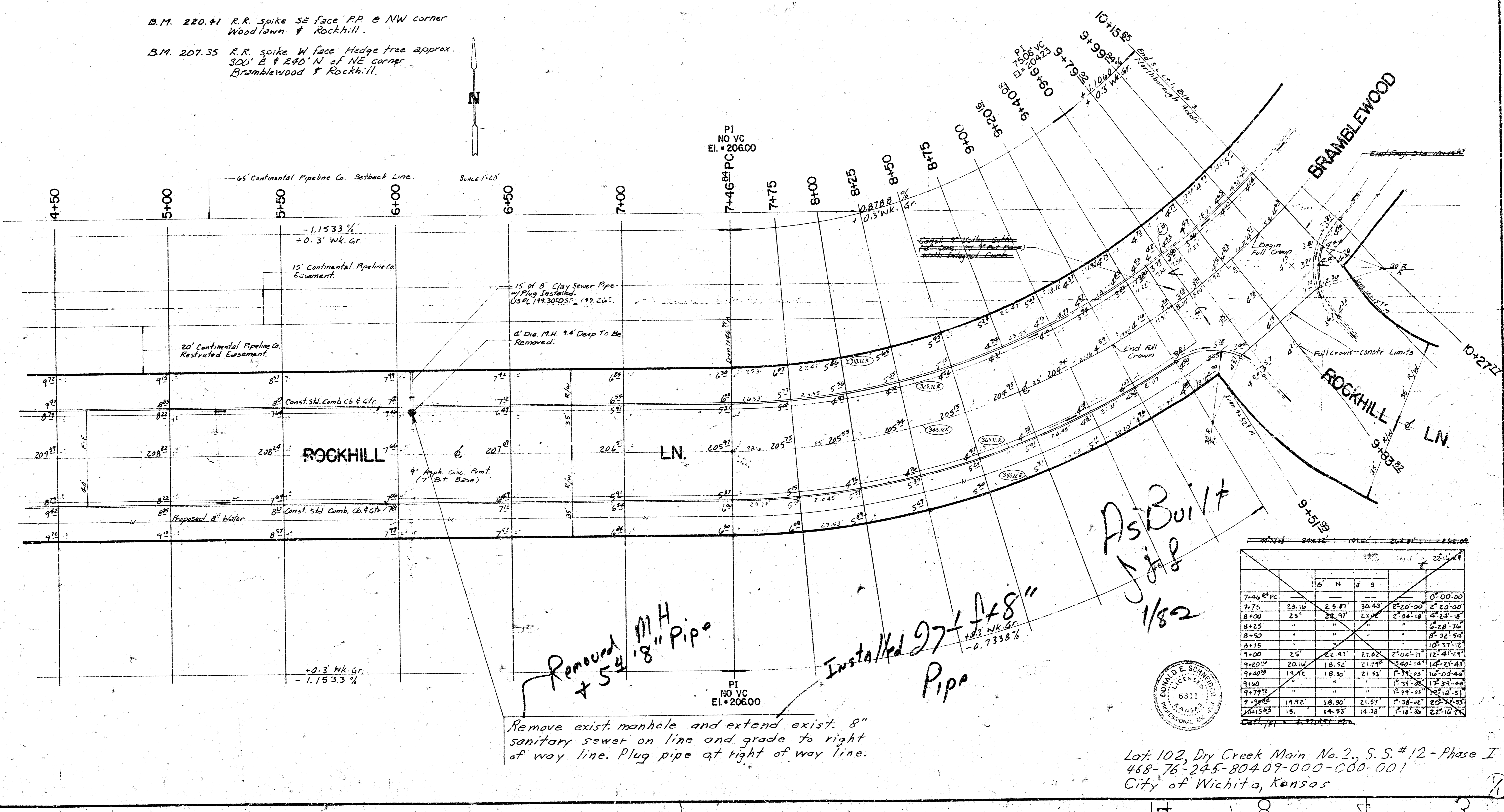


B.M. 220.41 R.R. spike SE face P.P. @ NW corner  
Woodlawn & Rockhill.

B.M. 207.35 R.R. spike W face Hedge tree approx.  
300' E & 240' N of NE corner  
Bramblewood & Rockhill.



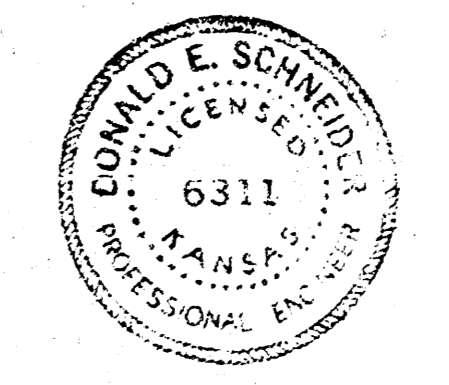
Removed MH  
& 54" 8" Pipe

Installed 27" 8" Pipe  
+0.3 WK. Gr.  
-0.7338%

Remove exist. manhole and extend exist. 8" sanitary sewer on line and grade to right of way line. Plug pipe at right of way line.

As Built  
JJB  
1/82

| Station    | Station | Station | Station | Station |
|------------|---------|---------|---------|---------|
| 7+46.84 PC |         |         |         | 0+00-00 |
| 7+75       | 20.16   | 25.87   | 30.43   | 20-00   |
| 8+00       | 25      | 28.97   | 27.00   | 20-16   |
| 8+25       |         |         |         | 20-30   |
| 8+50       |         |         |         | 20-50   |
| 8+75       |         |         |         | 21-12   |
| 9+00       | 25      | 22.47   | 27.02   | 21-17   |
| 9+20       | 20.16   | 18.52   | 21.77   | 21-43   |
| 9+40       | 15.12   | 18.30   | 21.53   | 22-00   |
| 9+60       |         |         |         | 22-10   |
| 9+79.12    |         |         |         | 22-51   |
| 9+98.24    | 19.72   | 18.30   | 21.52   | 23-02   |
| 10+15.83   | 15      | 14.53   | 14.38   | 23-16   |



Lot 102, Dry Creek Main No. 2, S.S. #12 - Phase I  
488-76-245-80409-000-001  
City of Wichita, Kansas