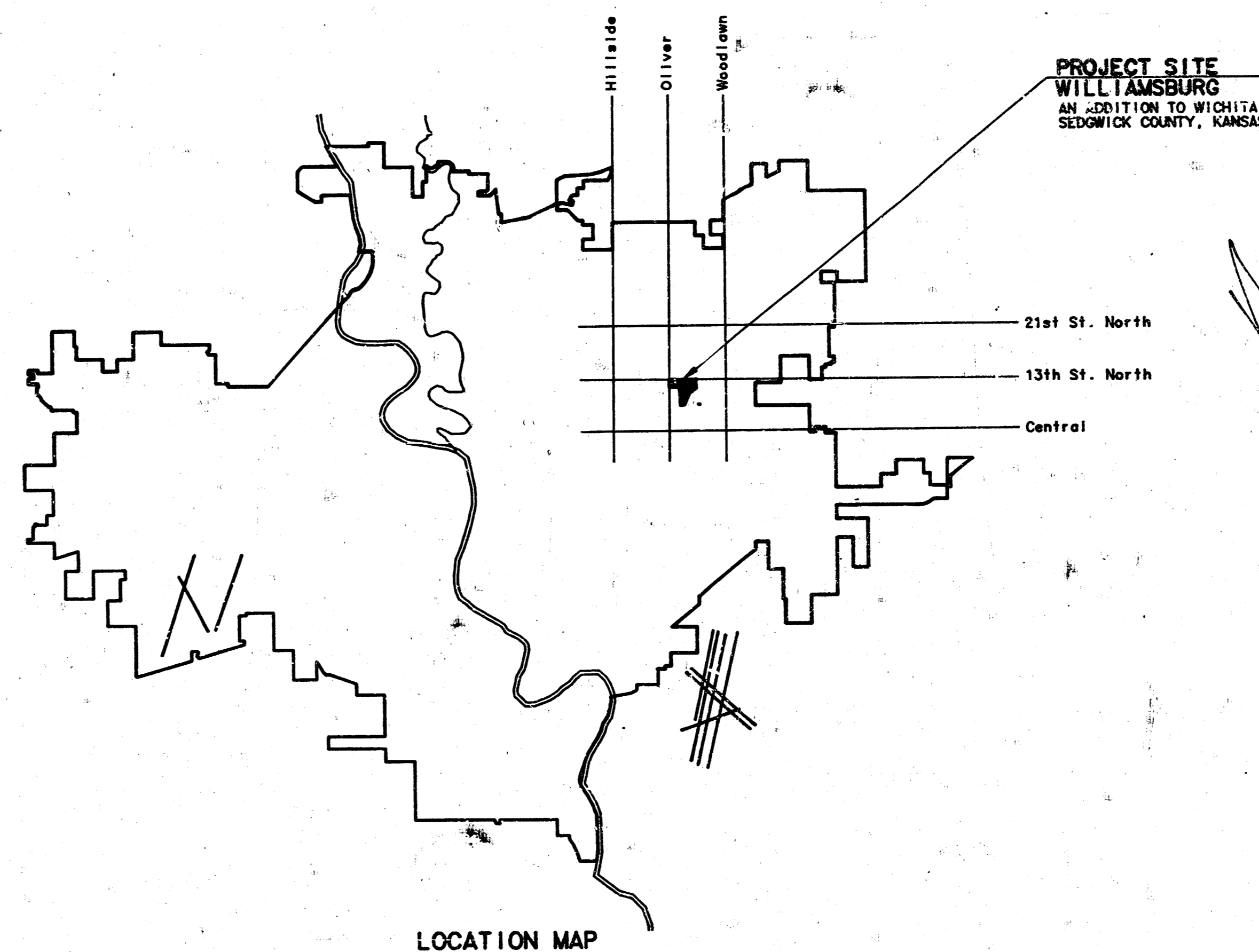


CONSTRUCTION PLANS FOR  
**LATERAL 108, MAIN 2**  
**SANITARY SEWER 12**

**THE CITY OF WICHITA,**  
**SEDGWICK COUNTY, KANSAS**  
MICHAEL E. LINDEBAK, P.E., CITY ENGINEER

INDEX OF SHEETS	
SHEET NO. 1	TITLE SHEET
SHEET NO. 2	KEY MAP
SHEET NO. 3	PLAT
SHEET NO. 4-10	PLAN/PROFILE

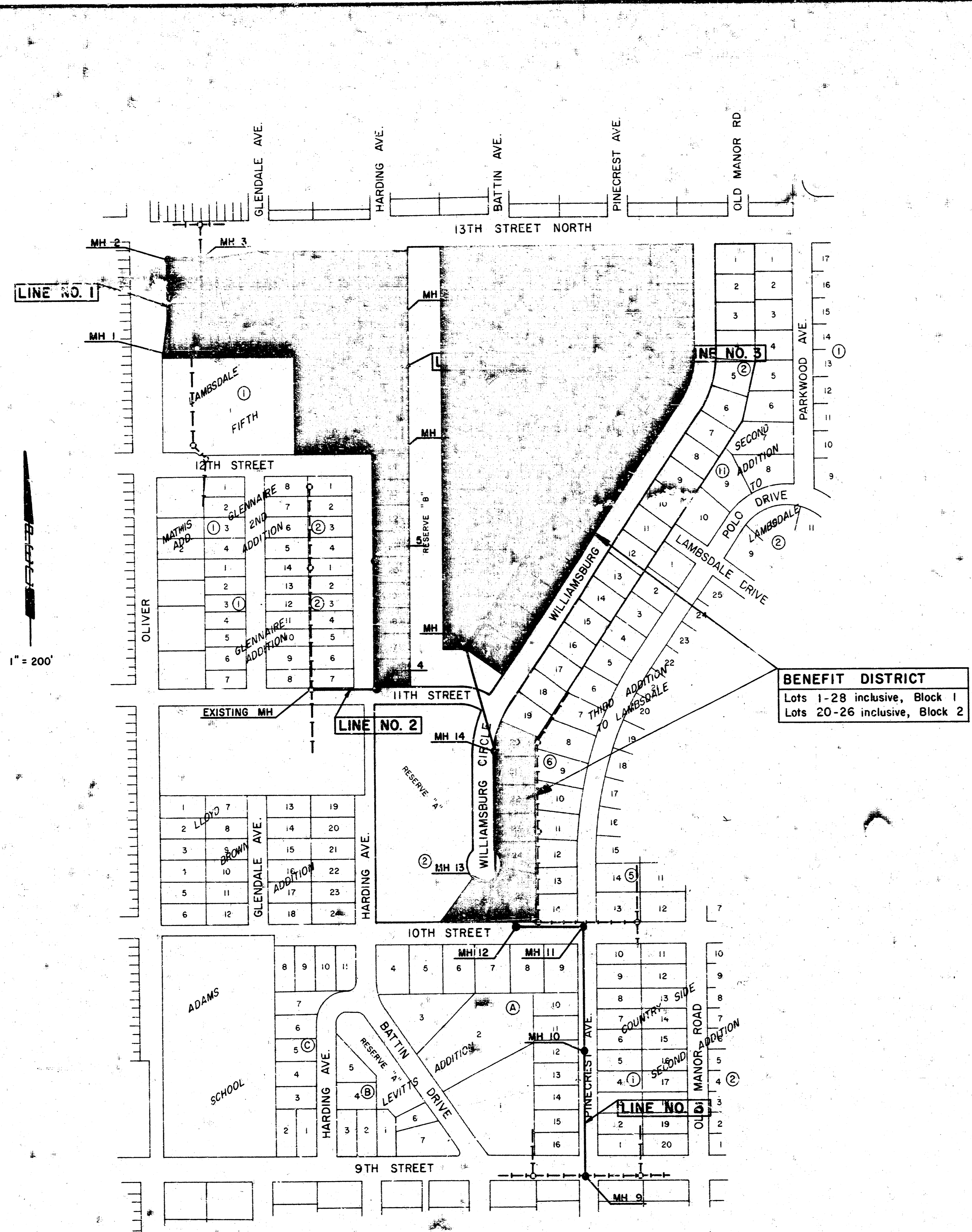


CITY OF WICHITA PROJECT NO. 468-76-245-81422-000-000-001

**JANUARY, 1985**

PLANS PREPARED BY  
**PROFESSIONAL ENGINEERING CONSULTANTS, P.A.**  
ENGINEERS  
WICHITA, KANSAS





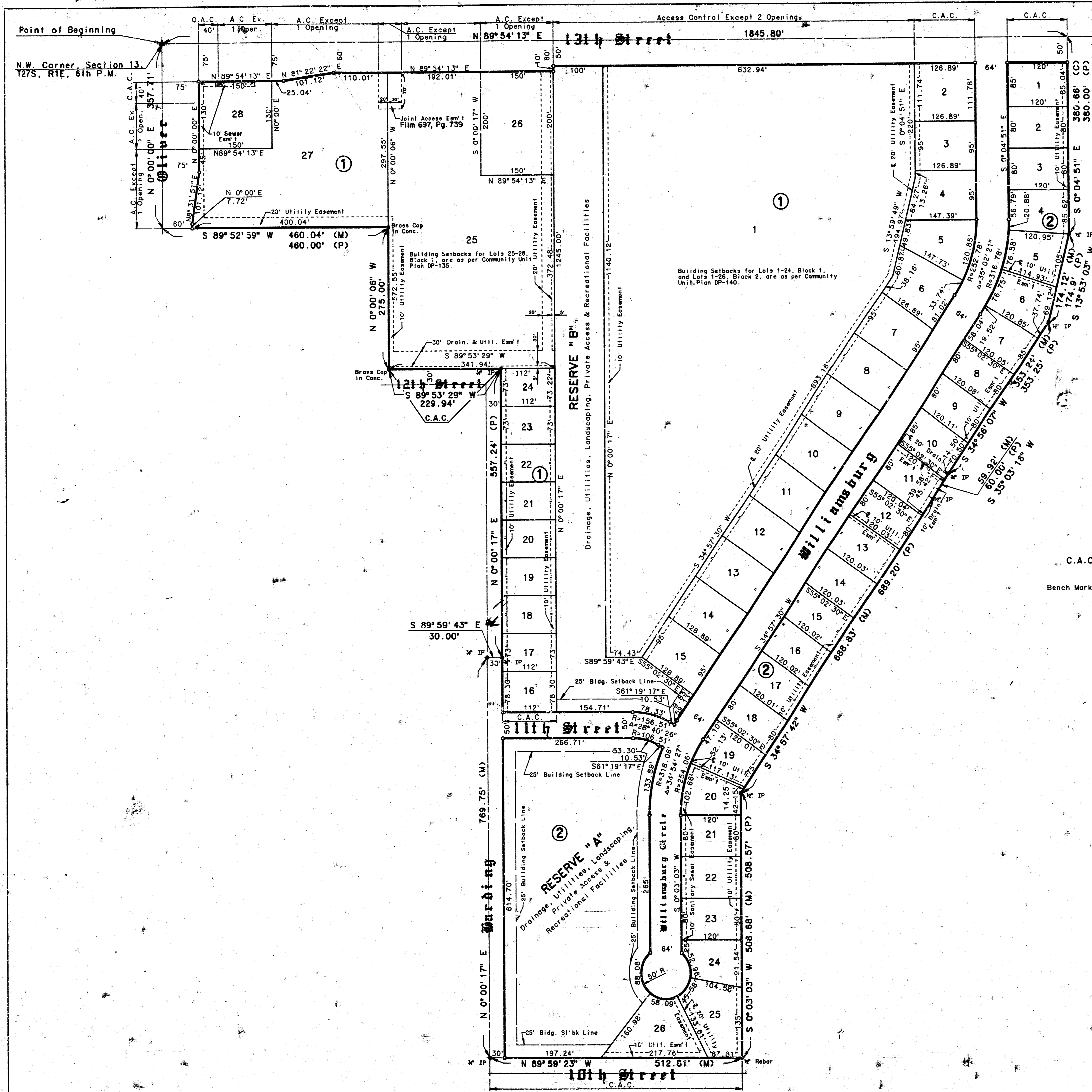
**BENEFIT DISTRICT**  
 Lots 1-28 inclusive, Block 1  
 Lots 20-26 inclusive, Block 2

LINE SCHEDULE	
Line No.	Sheet No.
1	4
2	5
3	6
3	7
3	8
3	9
3	10

**GENERAL NOTES**

1. ALL CONSTRUCTION AND MATERIALS TO COMPLY WITH CITY OF WICHITA SPECIFICATIONS AND STANDARDS.
2. ALL ELEVATIONS SHOWN ARE CITY OF WICHITA DATUM (USGS-1187.4 = CITY DATUM).
3. THE CONTRACTOR SHALL LIMIT THE EXTENT OF TRENCH TO REMAIN OPEN OVERNIGHTS AND WEEKENDS TO LESS THAN 50 FEET.
4. AT LEAST 48 HOURS PRIOR TO BEGINNING EXCAVATION (EXCLUDING WEEKENDS AND HOLIDAYS), THE CONTRACTOR SHALL CONTACT THE KANSAS ONE-CALL SYSTEM, A UTILITY LOCATION SERVICE, AT (316) 687-2470 TO REQUEST THE FOLLOWING UTILITY COMPANIES TO LOCATE ANY EXISTING LINES WITHIN THE PROJECT AREA: GAS SERVICE COMPANY, K.G. & E., THE WICHITA WATER DEPARTMENT, AND AIR CAPITAL CABLEVISION.
5. THE CONTRACTOR MUST ALSO NOTIFY THE TELEPHONE COMPANY AT (913) 571-2115 48 HOURS PRIOR TO BEGINNING EXCAVATION AND REQUEST THAT ANY LINES WITHIN THE PROJECT AREA BE FLAGGED.
6. THE BURIED UTILITIES AS LOCATED ON THE PLANS ARE APPROXIMATE LOCATIONS ONLY. IT SHOULD BE NOTED THAT OTHER BURIED LINES AND CABLES MAY EXIST WHICH ARE NOT SHOWN ON THESE PLANS. THE CONTRACTOR SHALL EXERCISE EXTREME CAUTION DURING TRENCHING OPERATIONS TO AVOID DAMAGING THESE LINES. ANY LINES DAMAGED SHALL BE REPLACED OR REPAIRED IMMEDIATELY AS DIRECTED BY THE ENGINEER AT THE CONTRACTOR'S EXPENSE.
7. THE CONTRACTOR SHALL RESTORE ALL DITCHES, SWALES, ROAD SHOULDERS, ENTRANCES, AND BANK LINES TO THEIR ORIGINAL SLOPES AND GRADES EXCEPT AS SHOWN OTHERWISE.
8. THE CONTRACTOR SHALL BE RESPONSIBLE FOR PRESERVING PROPERTY IRONS. THE CONTRACTOR SHALL BE REQUIRED TO RE-ESTABLISH ANY PROPERTY IRONS WHICH ARE DAMAGED OR DESTROYED BY HIS CONSTRUCTION OPERATIONS. SUCH IRONS SHALL BE RE-ESTABLISHED BY A LICENSED LAND SURVEYOR OR A LICENSED PROFESSIONAL ENGINEER IN ACCORDANCE WITH STATE LAWS. ALL COSTS FOR THIS WORK SHALL BE SUBSIDIARY TO THE OTHER ITEMS OF WORK.
9. ALL EXCESS EXCAVATED MATERIAL FROM THIS PROJECT SHALL BE WASTED ON SITE. NO EXCESS MATERIAL SHALL BE PLACED WITHIN STREET RIGHTS-OF-WAY. THE CONTRACTOR SHALL CONTACT THE DEVELOPER FOR INFORMATION PERTAINING TO ACCEPTABLE LOCATIONS FOR THE DISPOSITION OF WASTE MATERIAL. WASTE MATERIAL SHALL BE BLADED SMOOTH AND SLOPED TO DRAIN. THIS WORK SHALL BE SUBSIDIARY TO OTHER BID ITEMS.
10. CONTRACTOR SHALL PROVIDE POSITIVE DRAINAGE AWAY FROM ALL MANHOLE COVERS.
11. WHERE CONNECTION TO AN EXISTING SEWER IS REQUIRED, THE CONTRACTOR SHALL BE RESPONSIBLE FOR MAINTAINING CONTINUOUS FLOW OF SANITARY SEWAGE THROUGH CONSTRUCTION. CONTRACTOR'S PROPOSED METHOD FOR MAINTAINING FLOW SHALL BE APPROVED BY THE ENGINEER. COST OF MAINTAINING FLOW THROUGH CONSTRUCTION WILL NOT BE PAID FOR DIRECTLY AND THIS COST SHALL BE CONSIDERED AS SUBSIDIARY TO THE OTHER ITEMS OF WORK.
12. AT LEAST 48 HOURS PRIOR TO BEGINNING CONSTRUCTION, THE CONTRACTOR SHALL NOTIFY AREA RESIDENCES OF STREET CLOSINGS. RECONSTRUCTION OF STREETS SHALL BE COMPLETED AS EXPEDITIOUSLY AS POSSIBLE USING STANDARD CONSTRUCTION PRACTICES.
13. REPLACEMENT OF PAVED STREETS AND DRIVE ENTRANCES SHALL CONFORM TO CITY OF WICHITA STANDARDS AND SPECIFICATIONS, INCLUDING MATERIALS, THICKNESSES, SLOPES, PAVEMENT JOINTS, ETC. THE CONTRACTOR SHALL MATCH EXISTING PAVEMENT GRADES AT THE LIMITS OF PAVEMENT REMOVAL AND SHALL GRADE THE ADJACENT EXISTING UNPAVED AREAS SO AS NOT TO CREATE ANY PONDING OR DRAINAGE PROBLEMS. PAYMENT FOR DRIVE APPROACH REMOVAL AND REPLACEMENT ON PINECREST AVENUE SHALL BE CONSIDERED AS SUBSIDIARY TO THE PAYMENT FOR PAVEMENT REMOVAL AND REPLACEMENT.
14. PAVEMENT REMOVAL AND/OR REPLACEMENT WILL BE MEASURED AND PAID FOR ON THE LINEAL FOOT BASIS AS MEASURED ALONG THE CENTERLINE OF THE SEWER REGARDLESS OF WIDTH, PAVEMENT TYPE AND/OR PAVEMENT THICKNESS. MINIMUM LIMITS OF SUCH PAVEMENT REMOVAL AND REPLACEMENT SHALL BE ONE FOOT BEYOND THE LIMITS OF THE EXCAVATION MADE FOR THE SEWER OR THE STRUCTURE. REMOVAL AND REPLACEMENT OF EXISTING PAVEMENT SHALL CONFORM TO THE APPLICABLE SECTIONS OF THE CITY OF WICHITA STANDARD SPECIFICATIONS.

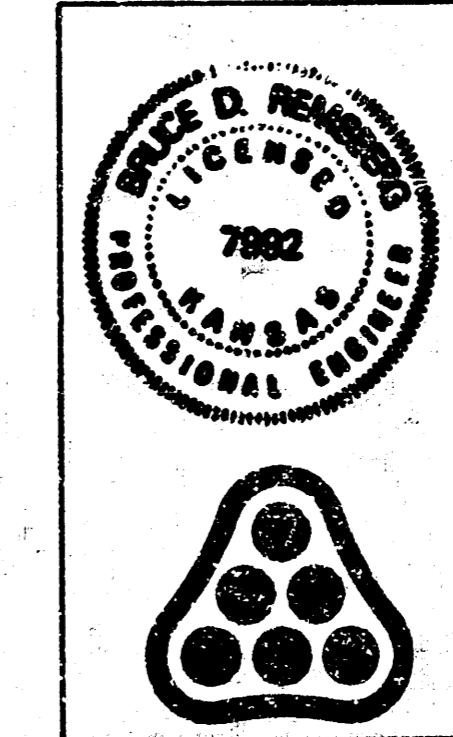
	No. _____ Revision _____ Date _____
	<b>LATERAL 108, MAIN 2          SANITARY SEWER 12          KEY MAP</b>
	MICHAEL E. LINDESAK, P.E. CITY ENGINEER CITY OF WICHITA PROJECT NO. 488-76-245-81422-000-001 <b>PROFESSIONAL ENGINEERING CONSULTANTS, P.A.</b> ENGINEERS WICHITA, KANSAS
	Prepared by <b>DDR, RFJ</b> Job No. <b>34-84541-5</b> Sht. <b>10/10</b> Drawn by <b>GM</b> Date <b>January 1985</b>



# Williamsburg

An Addition to  
Wichita, Sedgwick County, Kansas

Scale: 1" = 100'  
October 25, 1984  
● = Existing Iron  
○ = Iron to be Set  
C.A.C. = Complete Access Control  
Bench Mark - Oliver and 13th, City of Wichita  
Bench Mark Disc, 41.6" east & 33"  
north of center lines both.  
Elev. 208.20 City Datum



No.	Revision	By	Date

**LATERAL 108, MAIN 2  
SANITARY SEWER-12  
PLAT**

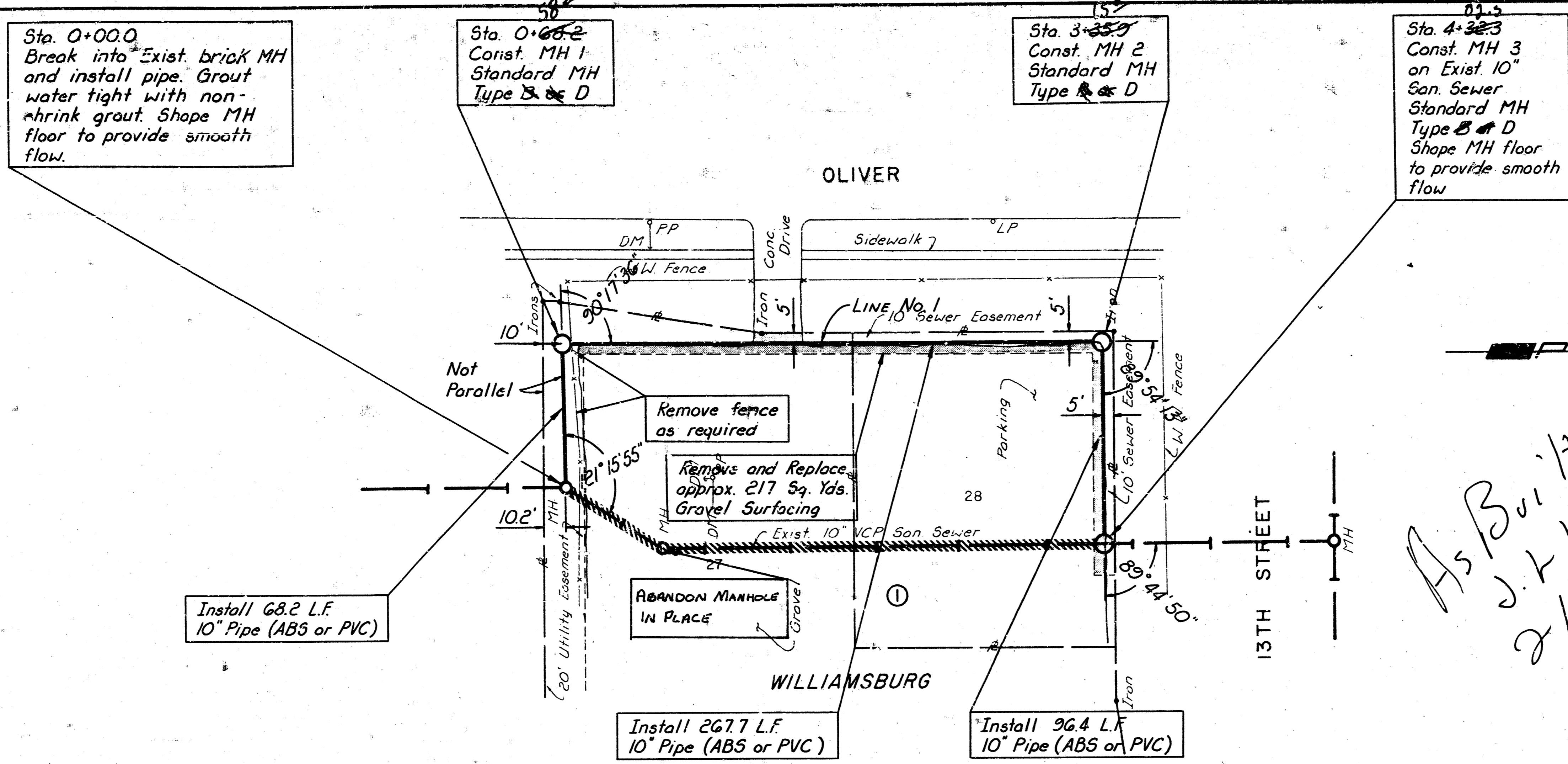
MICHAEL E. LINDEBAK, P.E. CITY ENGINEER  
CITY OF WICHITA PROJECT NO. 468-76-245-81422-000-000-1

**PROFESSIONAL ENGINEERING CONSULTANTS, P.A.**  
ENGINEERS  
WICHITA, KANSAS

Designed by	Job No.	Sht. 3/10
Drawn by	Date	

DATE	
BY	
NO. OF SHEETS	
NO. OF SHEETS CHECKED	
NO. OF SHEETS DESIGNED	
PLAN	
NOTE BOOK	
NO.	

DATE	
BY	
NO. OF SHEETS	
NO. OF SHEETS CHECKED	
NO. OF SHEETS DESIGNED	
PROFILE	
NOTE BOOK	
NO.	



SCALE  
 0 40 80  
 PLAN: Lat. & Long.  
 PROFILE: Horiz. same as above  
 Vertical

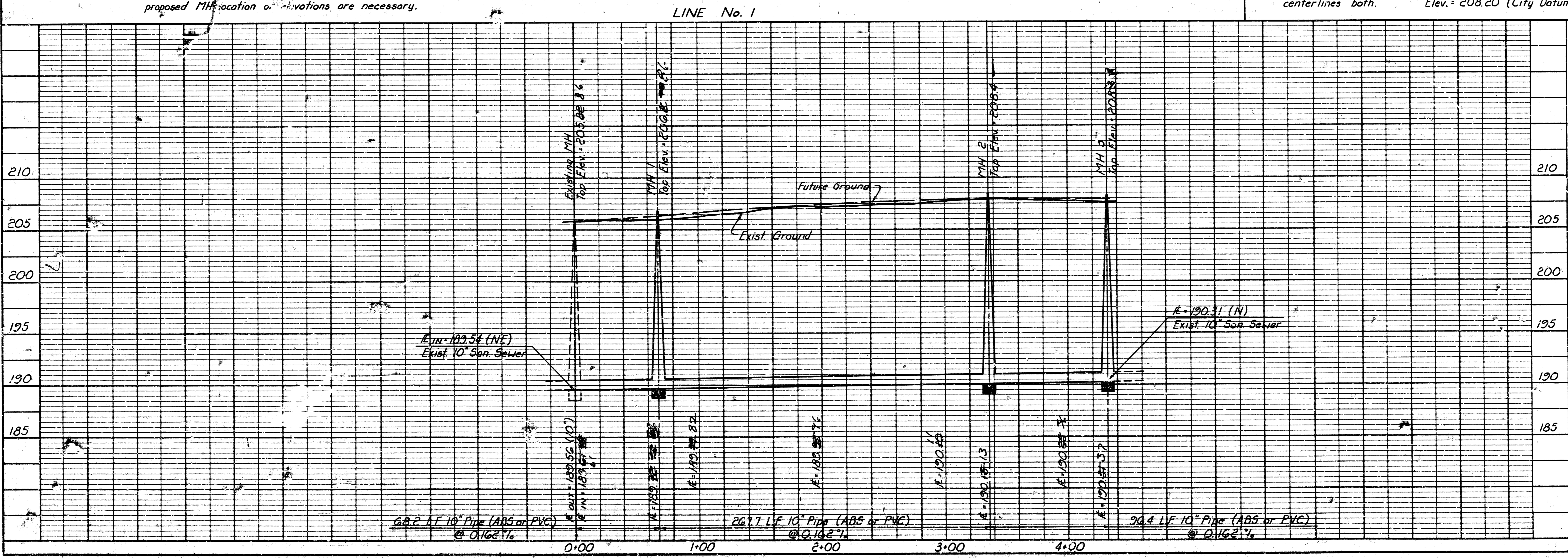
As Built  
 J. K. L.  
 2/86

Existing 10" VCP San. Sewer to be abandoned in place  
 Construct 8" thick brick masonry plugs at each end of pipe to be abandoned in place and at each side of the manhole to be abandoned in place. (4 required.)



Note: The Contractor shall verify the location and elevation of the Exist. 10" San. Sewer at proposed MH 3 prior to construction. The Contractor shall notify the Engineer immediately if it appears that adjustments to the proposed MH location or elevations are necessary.

BM: Oliver and 13th St., City of Wichita Bench  
 Mark Disc. 41.6' east and 33' north of  
 centerlines both. Elev. = 208.20 (City Datum)



LATERAL JOB MAIN 2  
 SANITARY SEWER 12  
**LINE NO. 1**

PROFESSIONAL ENGINEERING CONSULTANTS, P.A.  
 ENGINEERS  
 WICHITA, KANSAS

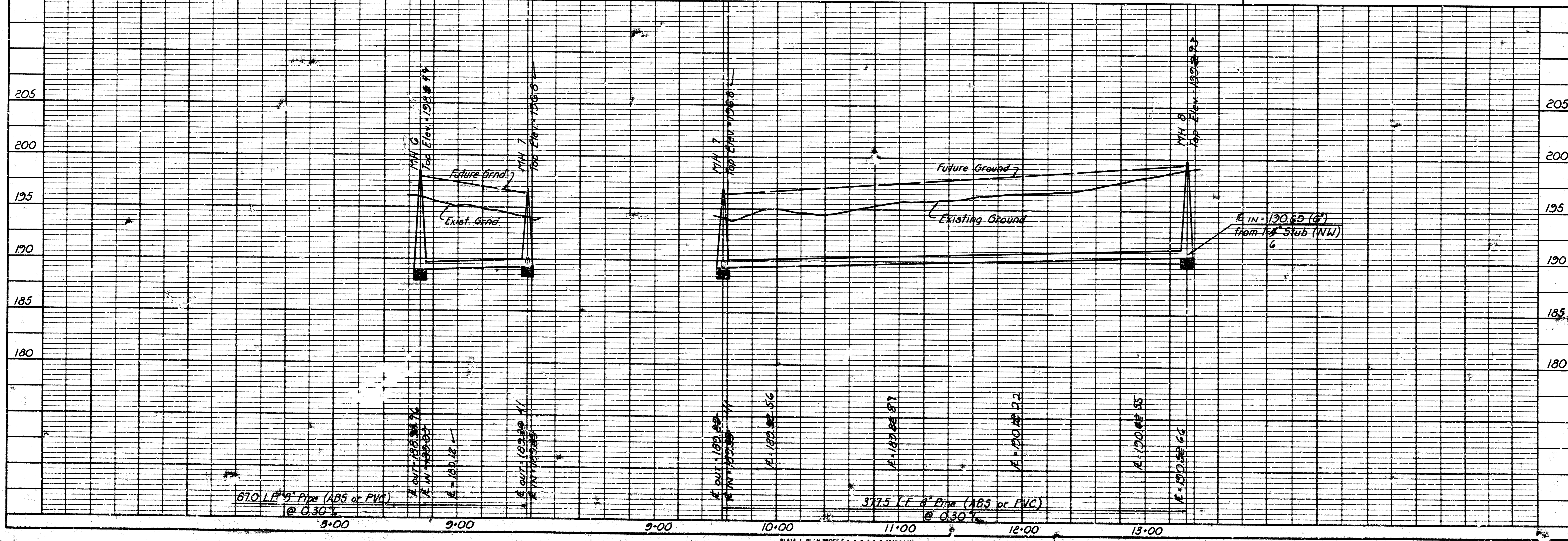
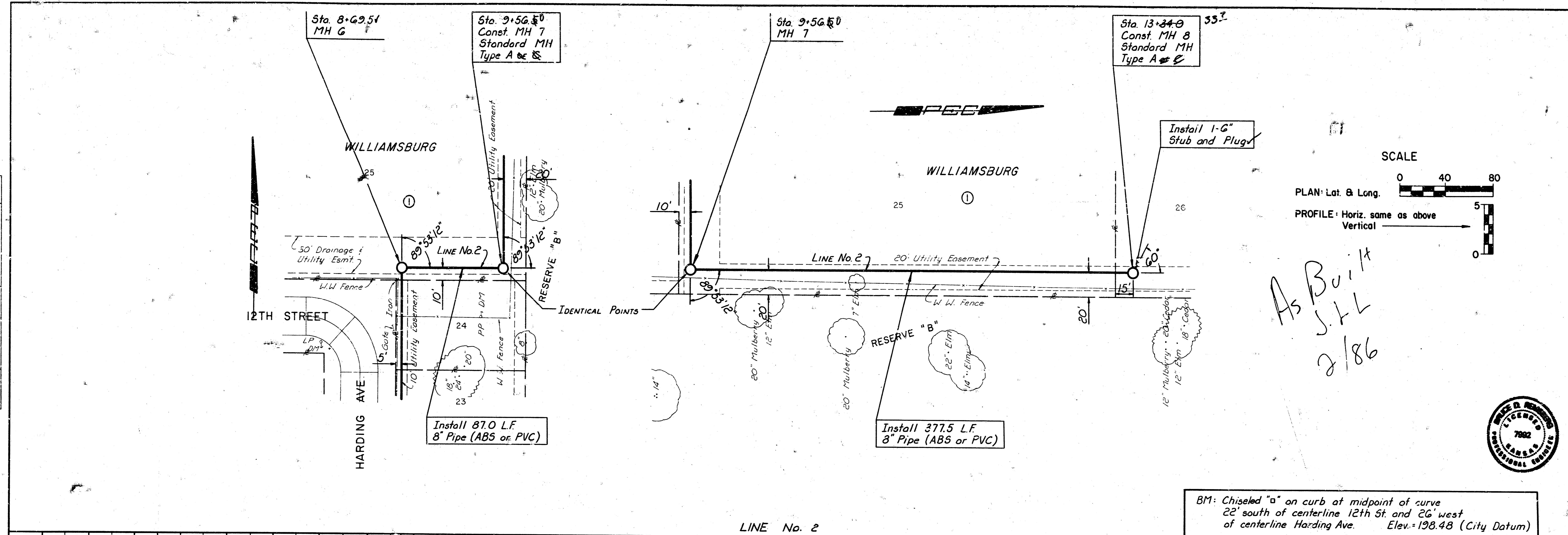
Michael E. Lindebak, P.E. CITY ENGINEER  
 CITY OF WICHITA PROJECT NO. 488-16-245-3422-000-000-001  
 Job No. 84-04541-5  
 Date January, 1985  
 Drawn by BDR, RFJ  
 Checked by GTF

PLATE 1 PLAN PROFILE OF P.R.R.E. STANDARD  
 EUGENE DIETZGEN CO.



DATE	
BY	
DESIGNED	
PLANNED	
ALIGNED	
NOTED	
STRUCTURE NOTATIONS	
NO.	

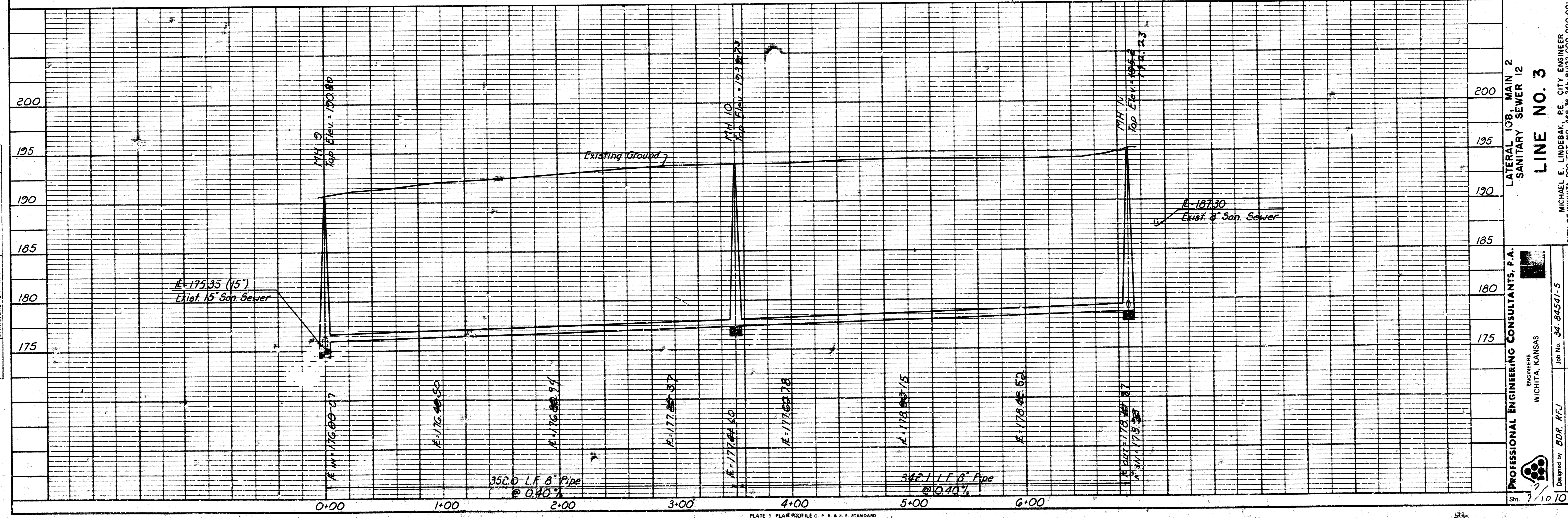
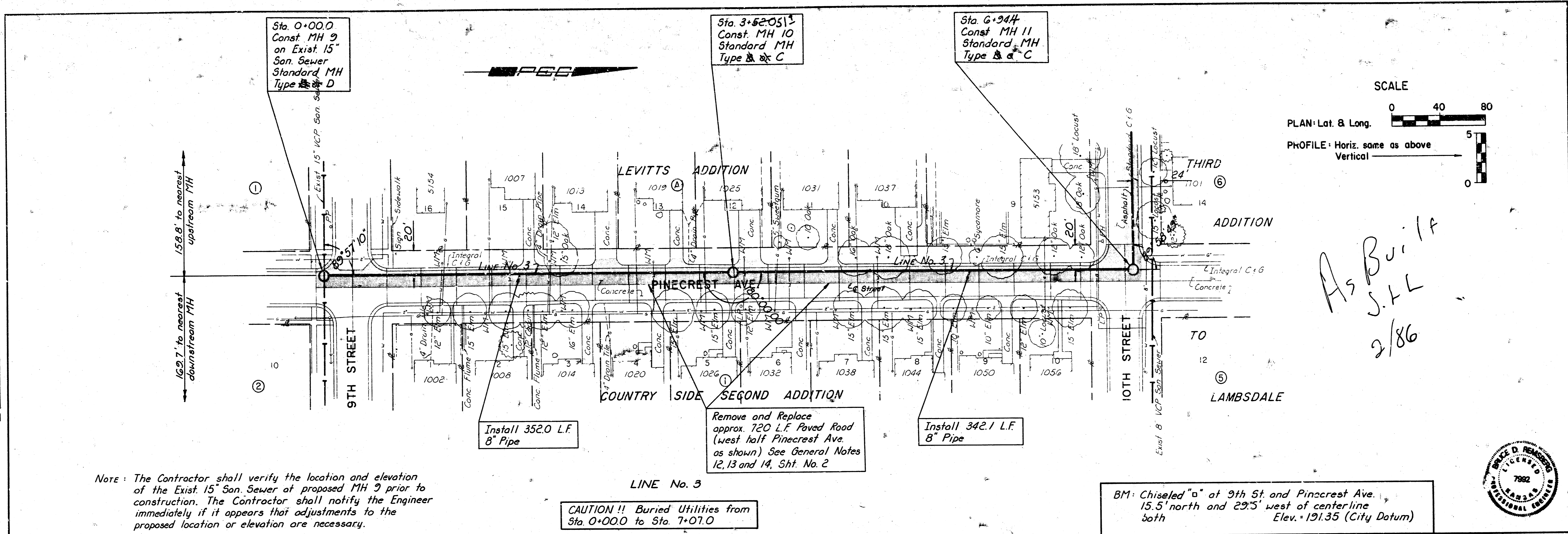
DATE	
BY	
DESIGNED	
PLANNED	
ALIGNED	
NOTED	
STRUCTURE NOTATIONS	
NO.	



PROFESSIONAL ENGINEERING CONSULTANTS, P.A.  
 ENGINEERS  
 WICHITA, KANSAS  
 Job No. 34-84541-5  
 designed by BDF:RFJ  
 Drawn by GT  
 Date January 1985  
 LATERAL JOB, MAIN 2  
 SANITARY SEWER 12  
 LINE NO. 2  
 MICHAEL E. LINDEBAK, P.E. CITY ENGINEER  
 CITY OF WICHITA PROJECT NO. 468-76-245-9422-000-000-001

PLAN	DATE
DESIGNED	BY
CHECKED	BY
PLOTTED	BY
NOTED	BY
NO.	

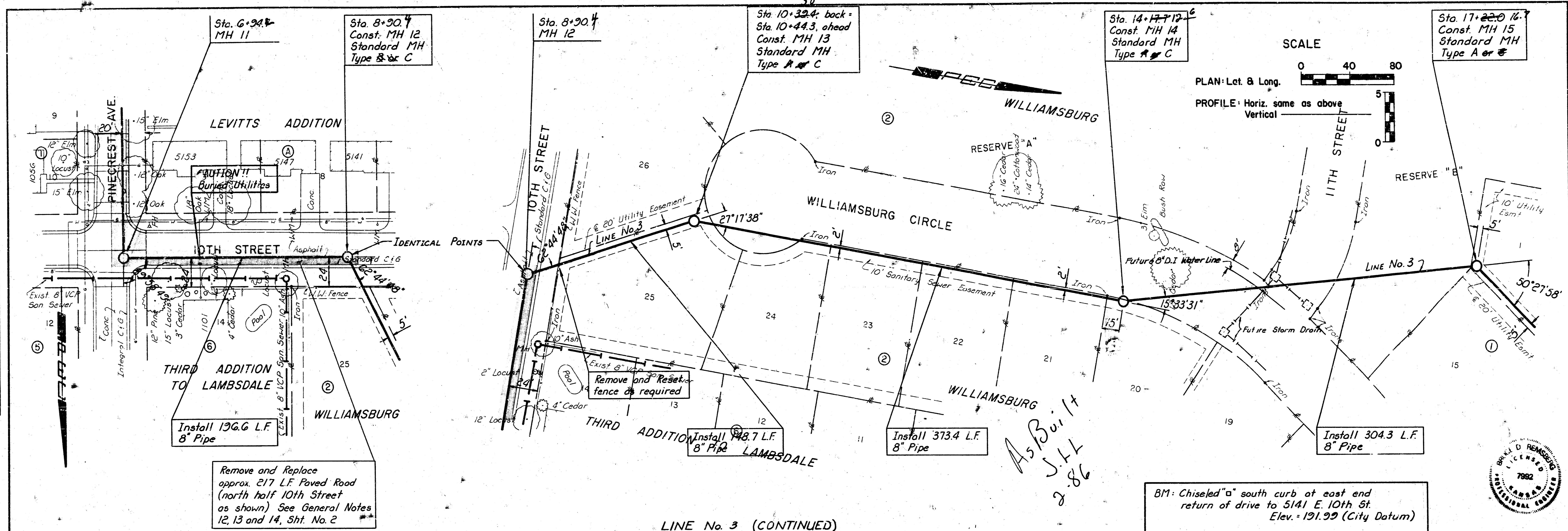
PROFILE	DATE
DESIGNED	BY
CHECKED	BY
PLOTTED	BY
NOTED	BY
NO.	



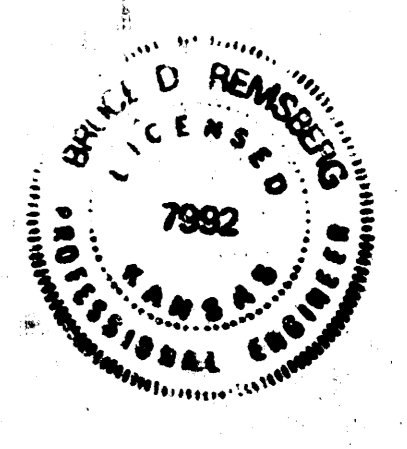
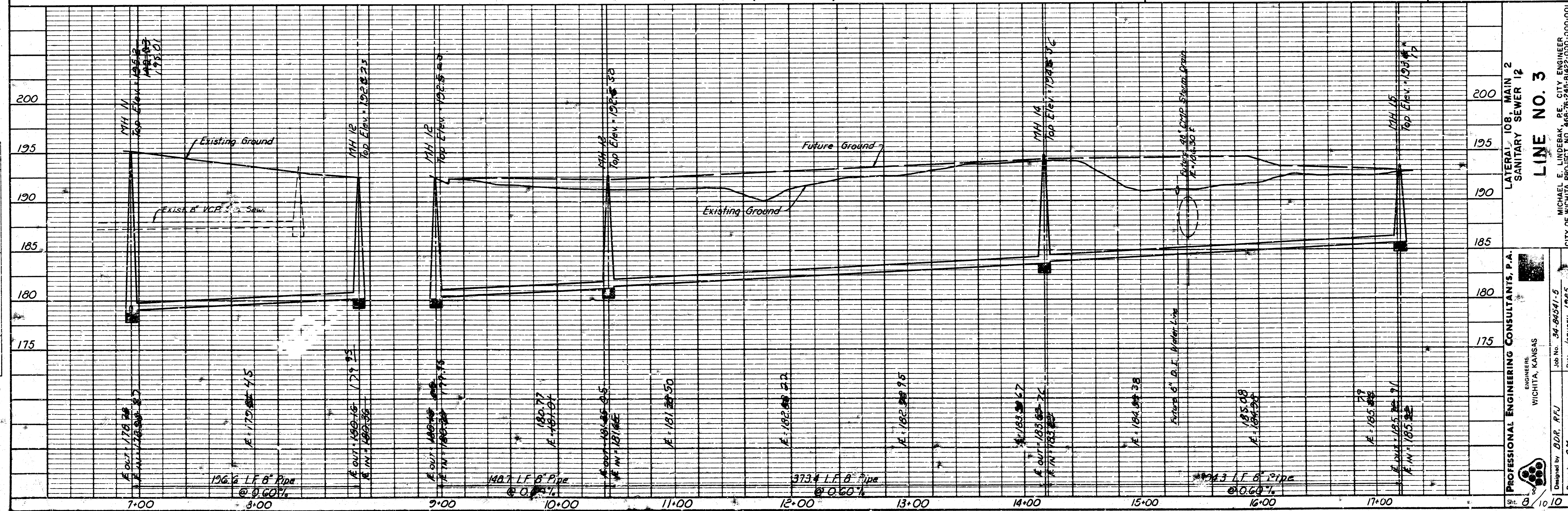
LATERAL 108, MAIN 2  
 SANITARY SEWER 12  
**LINE NO. 3**  
 PROFESSIONAL ENGINEERING CONSULTANTS, F.A.  
 ENGINEERS  
 WICHITA, KANSAS  
 Job No. 34-84541-5  
 Designed by B.D.R. R.F.J.  
 Drawn by G.M.  
 Date January, 1985  
 CITY OF WICHITA PROJECT NO. 468-76-245-84541-5-000-001

DATE: \_\_\_\_\_ BY: \_\_\_\_\_  
 PLAN: SUBMITTED, PLOTTED, CHECKED, REVISIONS, DATE, BY, NO. (Columns for revision tracking)

DATE: \_\_\_\_\_ BY: \_\_\_\_\_  
 PROFILE: SUBMITTED, PLOTTED, CHECKED, REVISIONS, DATE, BY, NO. (Columns for revision tracking)



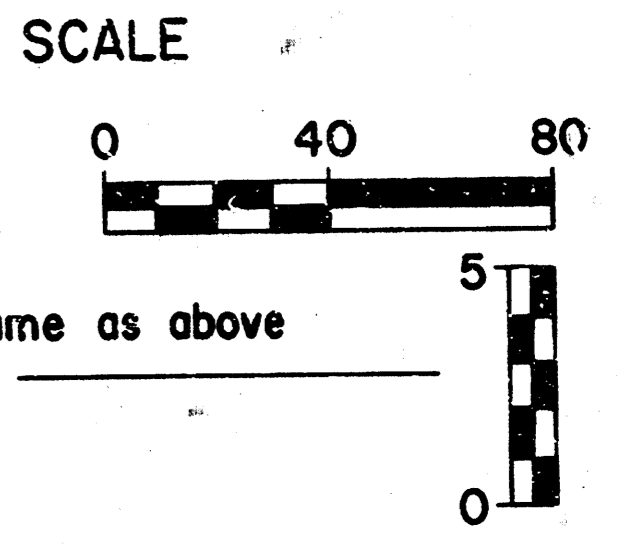
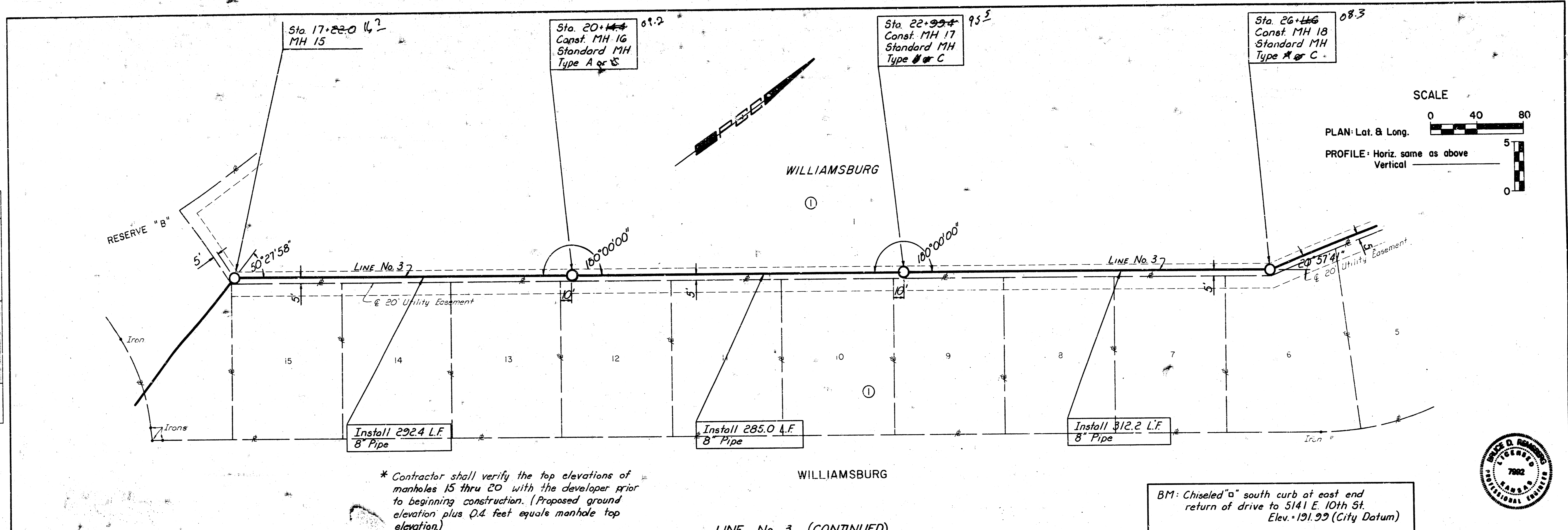
LINE No. 3 (CONTINUED)



PROFESSIONAL ENGINEERING CONSULTANTS, P.A.  
 ENGINEERS  
 WICHITA, KANSAS  
 JOB NO. 34-84541-5  
 CITY OF WICHITA PROJECT NO. 468-76-243-8122-000-000-001  
 DATE: January 1985  
 Drawn by: D.M. PFJ  
 Checked by: G.M.  
 SHEET 8 OF 10

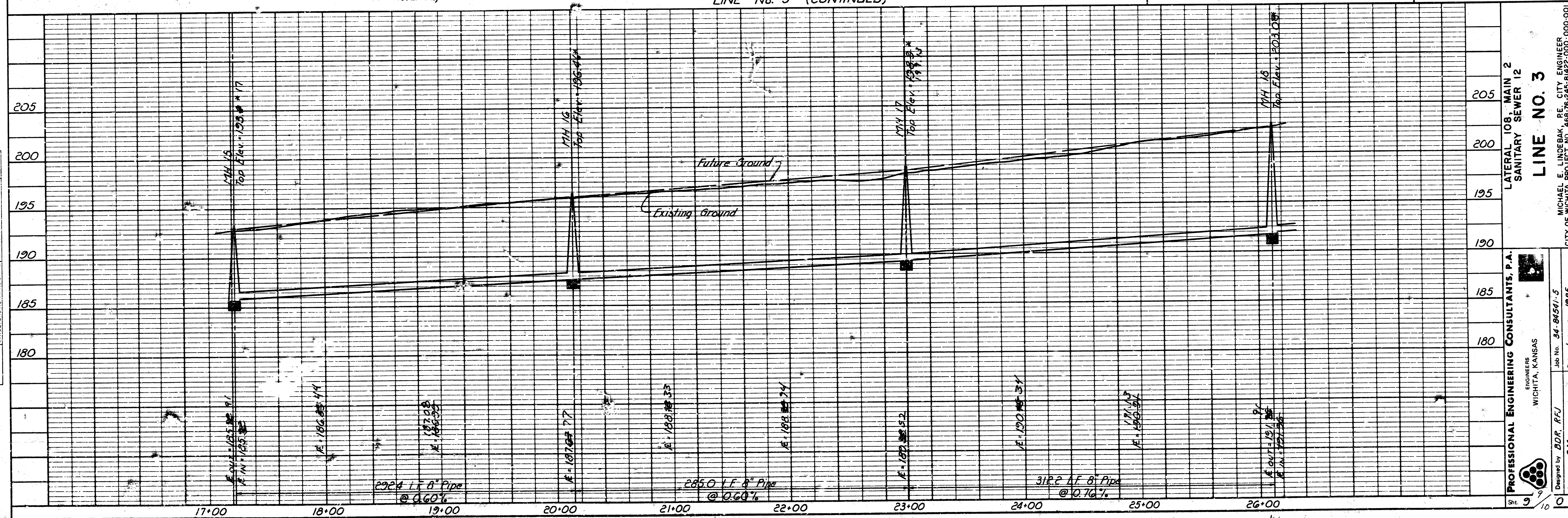
PLAN	DATE
SUBMITTED	
PROTECTED	
NOTE BOOK	
BY	
NO.	

PROFILE	DATE
SURVEYED	
GRADES CHECKED	
BY	
NO.	



\* Contractor shall verify the top elevations of manholes 15 thru 20 with the developer prior to beginning construction. (Proposed ground elevation plus 0.4 feet equals manhole top elevation.)

BM: Chiseled "a" south curb at east end return of drive to 5141 E. 10th St. Elev. = 191.92 (City Datum)



PROFESSIONAL ENGINEERING CONSULTANTS, P.A.  
ENGINEERS  
WICHITA, KANSAS

Job No. 34-84541-5  
Date: January 1985

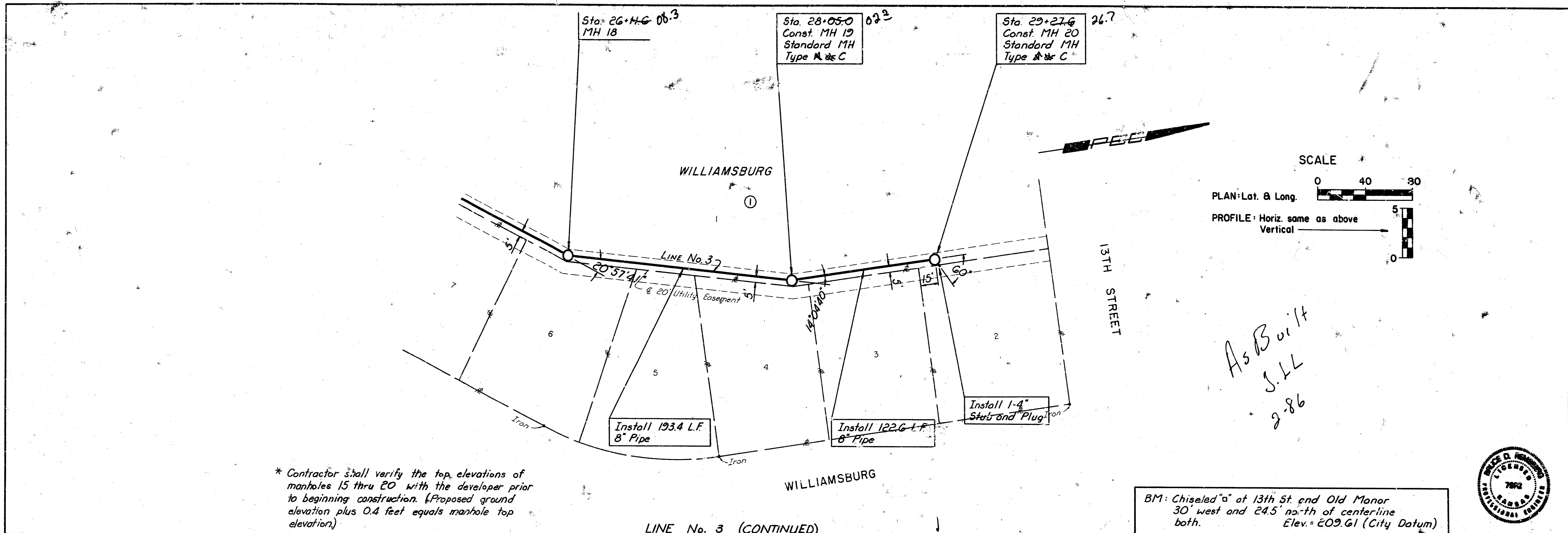
Designed by: BDR, RFU  
Drawn by: GPT

LATERAL JOB MAIN 2  
SANITARY SEWER 12  
LINE NO. 3

MICHAEL E. LINDBAK, P.E. CITY ENGINEER  
CITY OF WICHITA, PROJECT NO. 468-19-245-8452-000-000-001

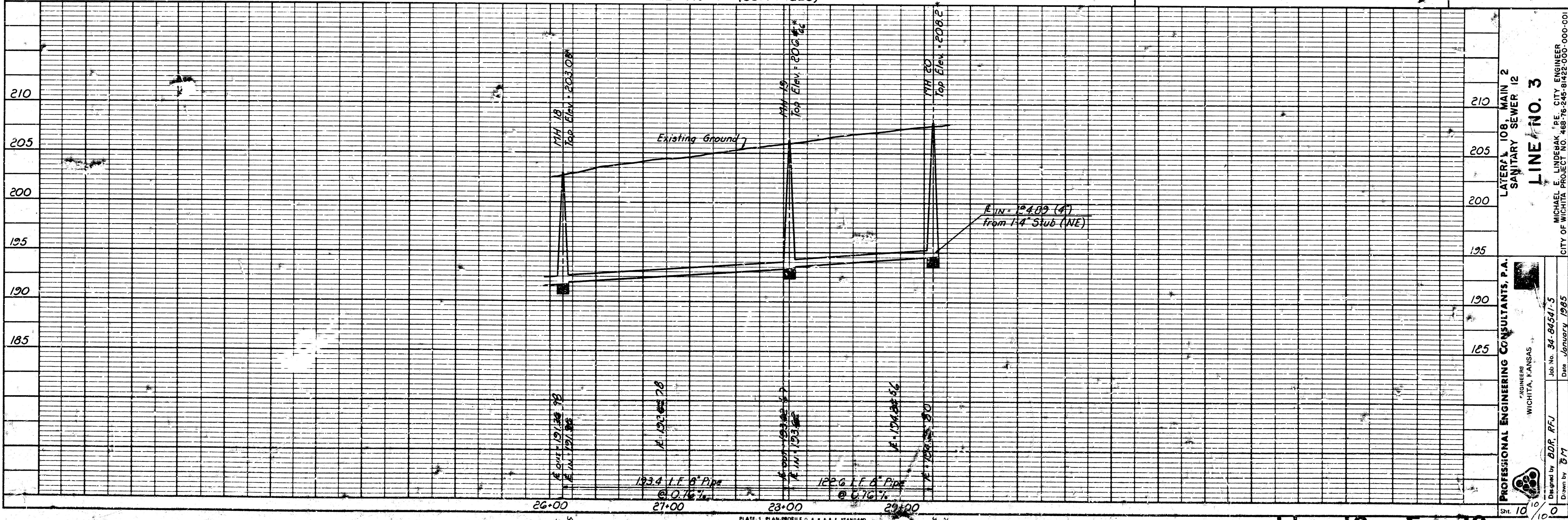
PLAN	DATE
SUBMITTED	BY
ALIGNED	DATE
CHECKED	
BY	
NO.	

PROFILE	DATE
SUBMITTED	BY
NOTES	DATE
CHECKED	
BY	
NO.	



\* Contractor shall verify the top elevations of manholes 15 thru 20 with the developer prior to beginning construction. (Proposed ground elevation plus 0.4 feet equals manhole top elevation.)

BM: Chiseled "a" at 13th St. end Old Manor 30' west and 24.5' north of centerline both. Elev. = 209.61 (City Datum)



LATERAL 108, MAIN 2  
 SANITARY SEWER 12  
**LINE NO. 3**  
 PROFESSIONAL ENGINEERING CONSULTANTS, P.A.  
 WICHITA, KANSAS  
 Job No. 34-84341-S  
 Date January 1985  
 Designed by BDF, PFI  
 Drawn by BTM