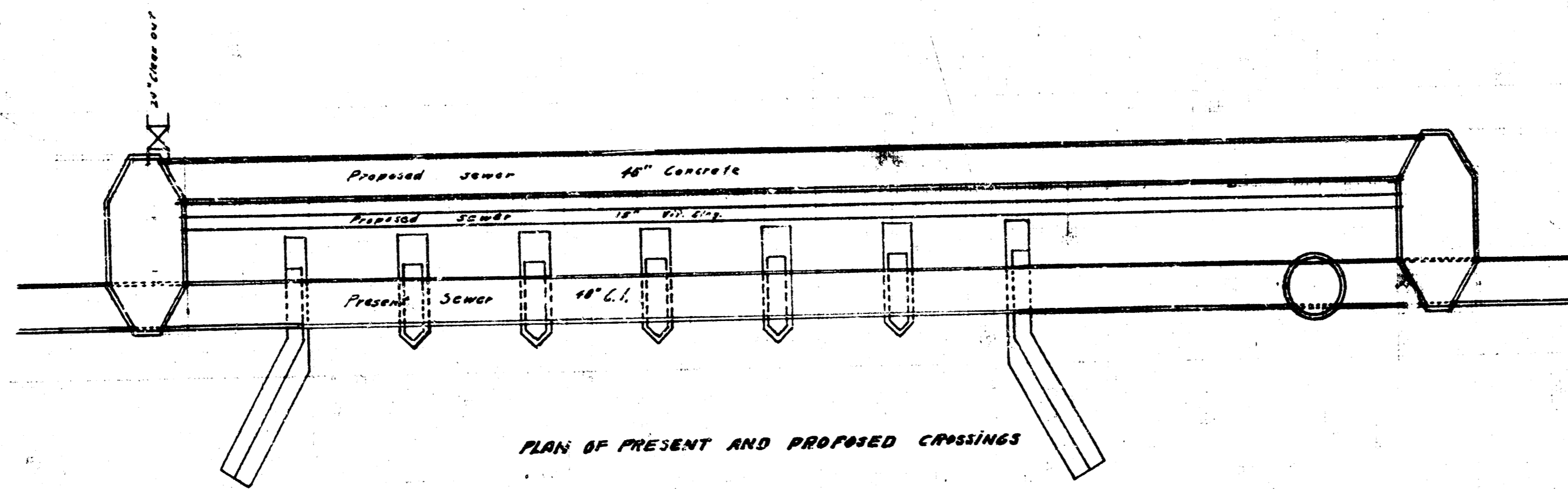


PROFILE OF PRESENT AND PROPOSED CROSSINGS

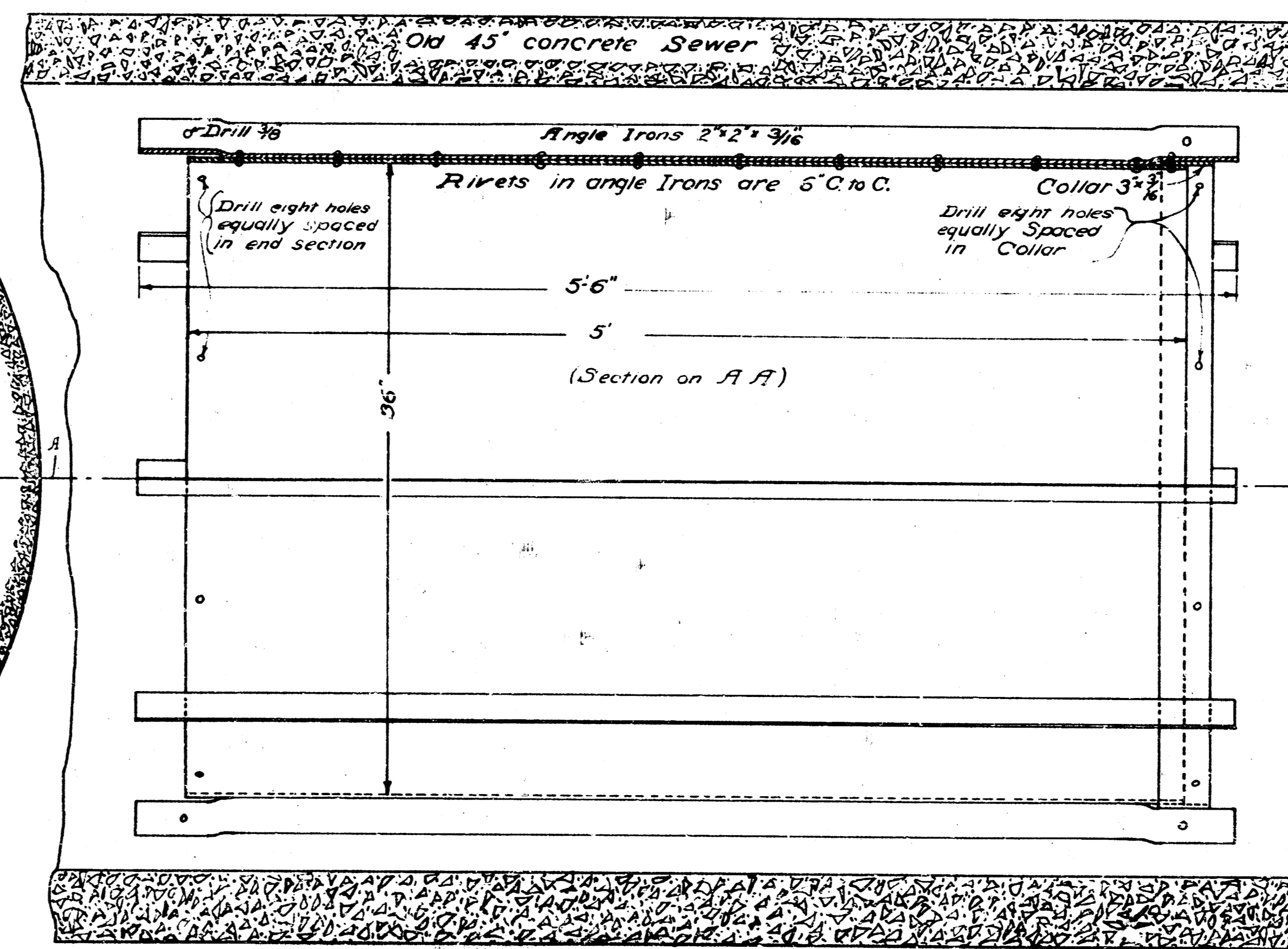
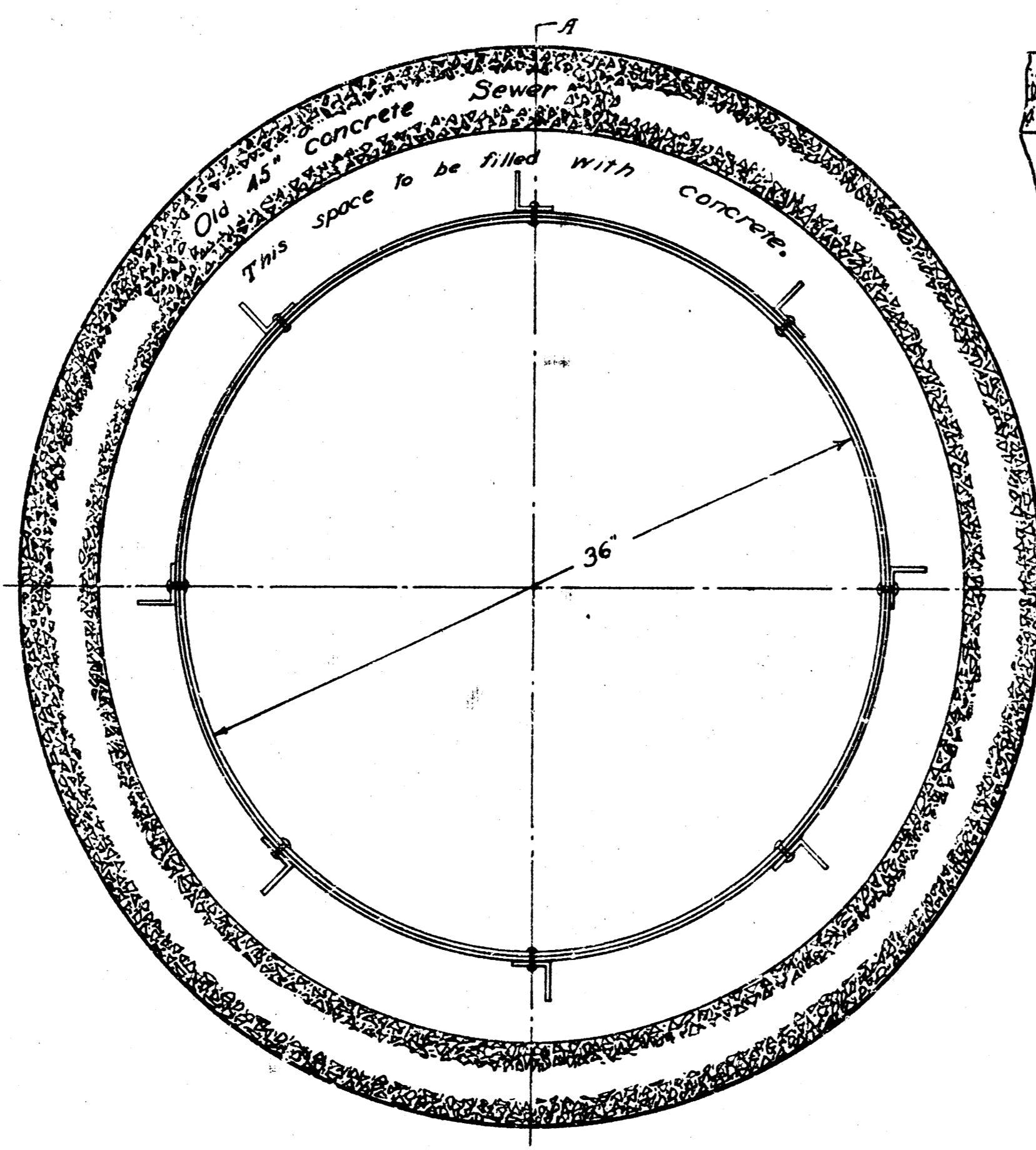


PLAN OF PRESENT AND PROPOSED CROSSINGS



CROSSING OF GYPSUM CREEK.
 SANITARY SEWER DIST. NO. 12.
 WICHITA, KANS.
 Scale 10' = 1"

DETAILS OF TUBING USED IN REPAIRING GYPSUM CREEK CROSSING
 P.L. BROCKWAY - CITY ENGINEER



-NOTE-
 (1) Angle Irons must be so spaced, reversed and Collar, and section so drilled that succeeding sections can be bolted together.
 (2) All drill holes are $\frac{3}{8}$ "
 (3) 22 Sections required

