

ALTERATION, REPAIR, RECONSTRUCTION OR
 CONSTRUCTION OF A SUPPLEMENTAL SEWER TO
SANITARY SEWER NO. 20

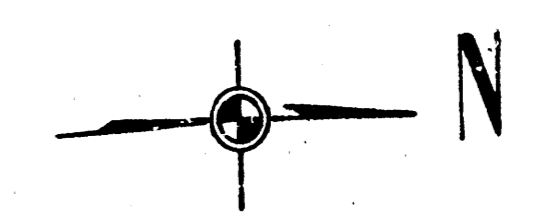
ALONG THE WEST BANK OF THE WICHITA DRAINAGE CANAL

FIRST ST. TO 12TH ST.

CITY OF WICHITA, KANSAS

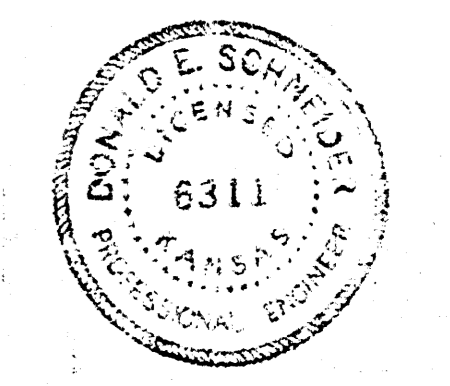
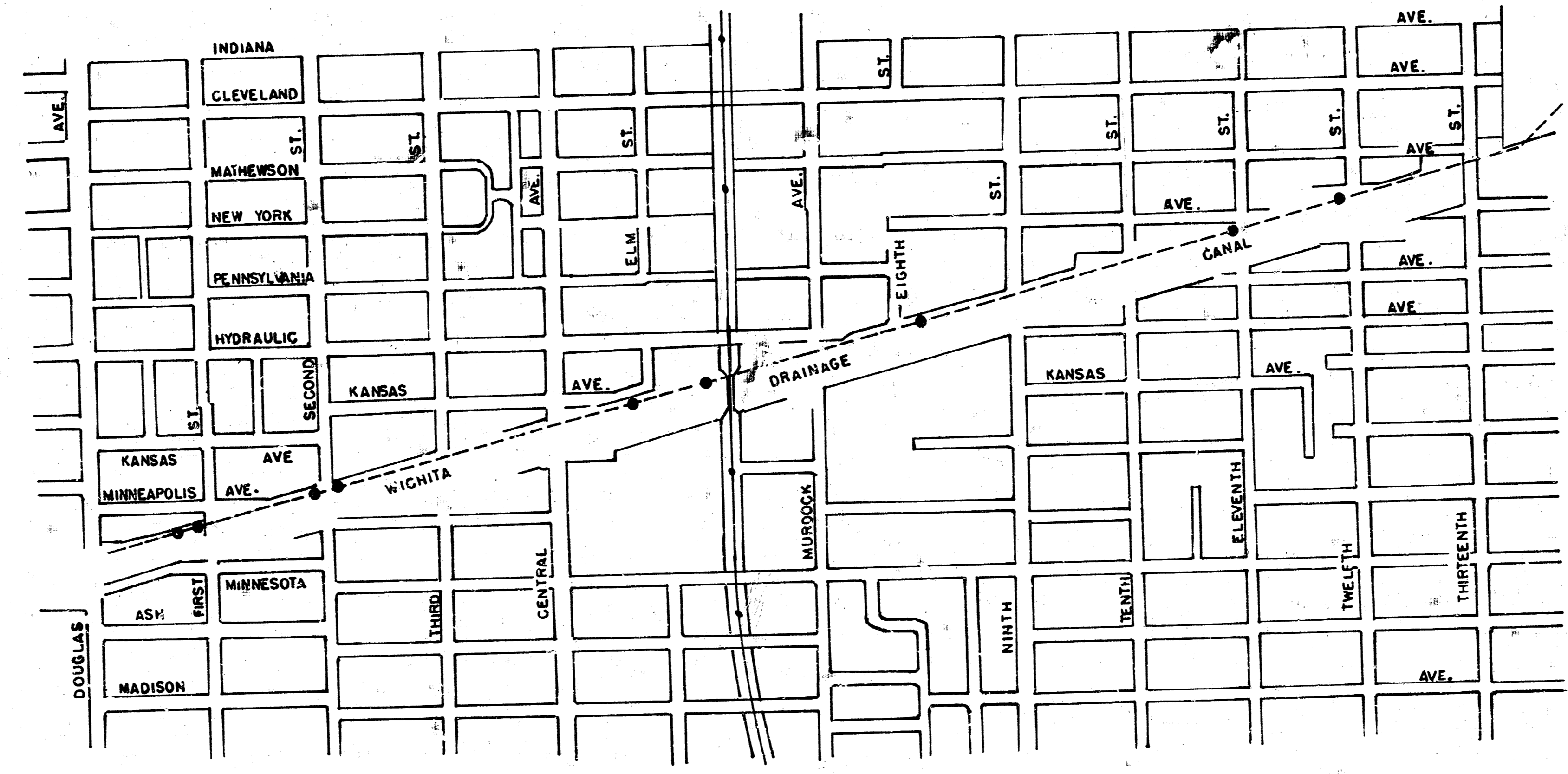
R. W. LINN — CITY ENGINEER

Aug. 1974, PROJECT NO. DBKL 57 40 69

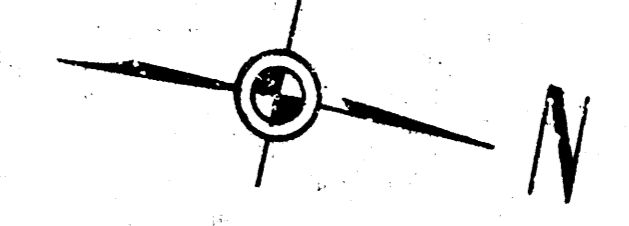


GENERAL NOTE

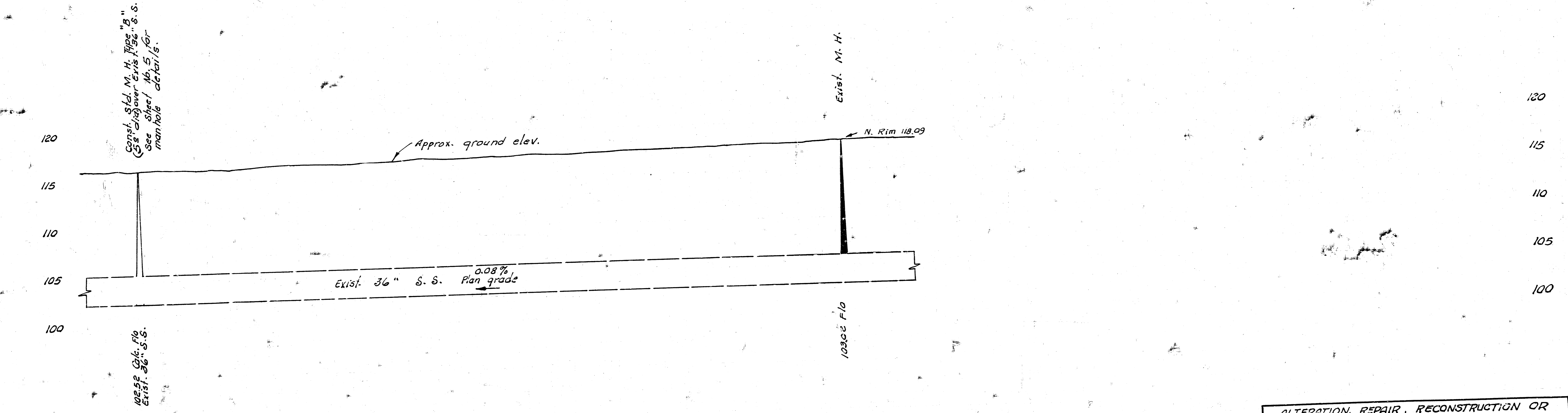
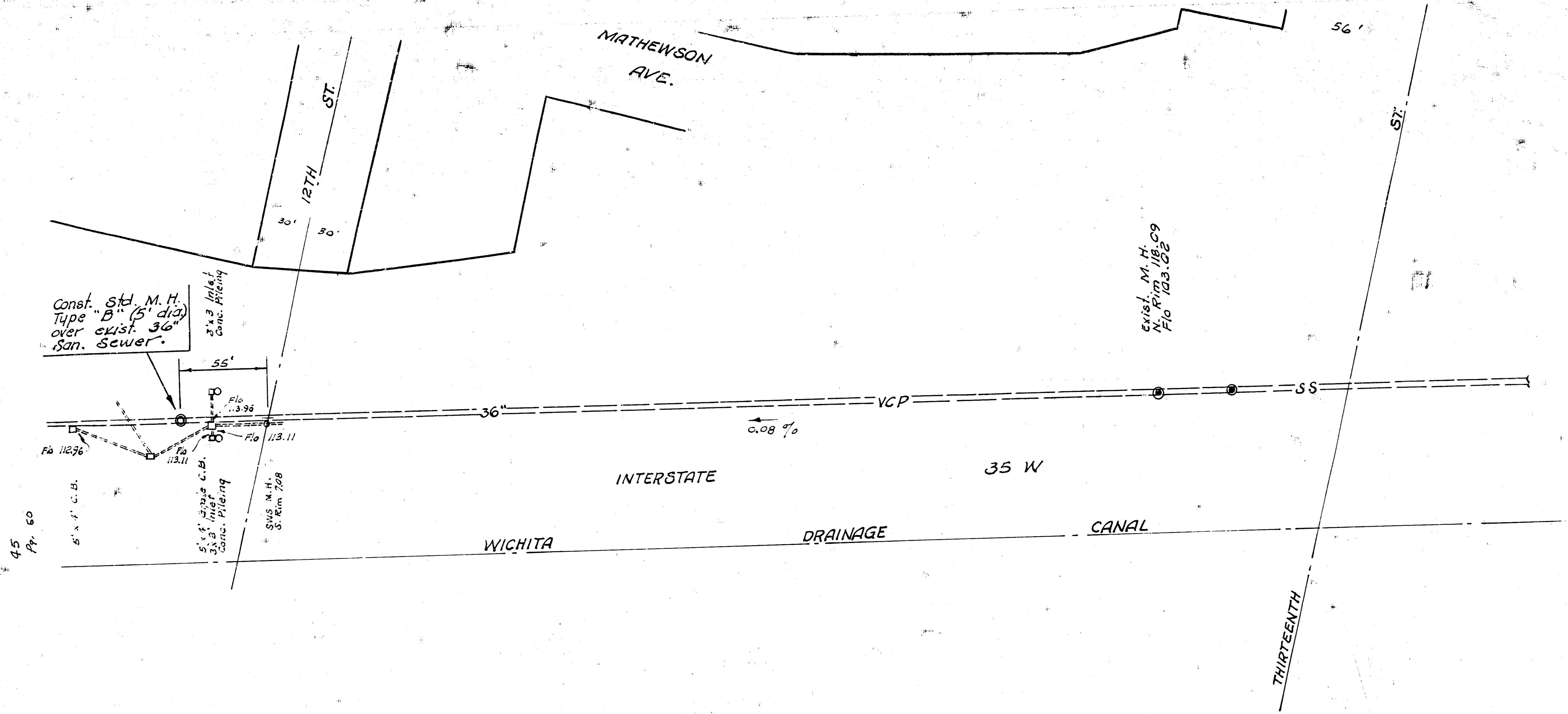
SAND FILL AND/OR FLUSHING WILL NOT BE PAID FOR SEPARATELY AND THE COST FOR THIS WORK SHALL BE INCLUDED IN THE PRICE BID FOR MANHOLE CONSTRUCTION OR RECONSTRUCTION. SIDEWALK SHALL BE REMOVED AND REPLACED TO THE NEAREST JOINT WHERE NECESSARY. THE 36" SANITARY SEWER ON WHICH MANHOLES ARE TO BE CONSTRUCTED OR RECONSTRUCTED SHALL BE UNDER PRESSURE AT CERTAIN TIMES OF THE DAY AND THE CONTRACTOR MUST USE CAUTION WHEN COMPLETING THE WORK UNDER THIS CONTRACT.



FILMED FROM THE BEST AVAILABLE COPY



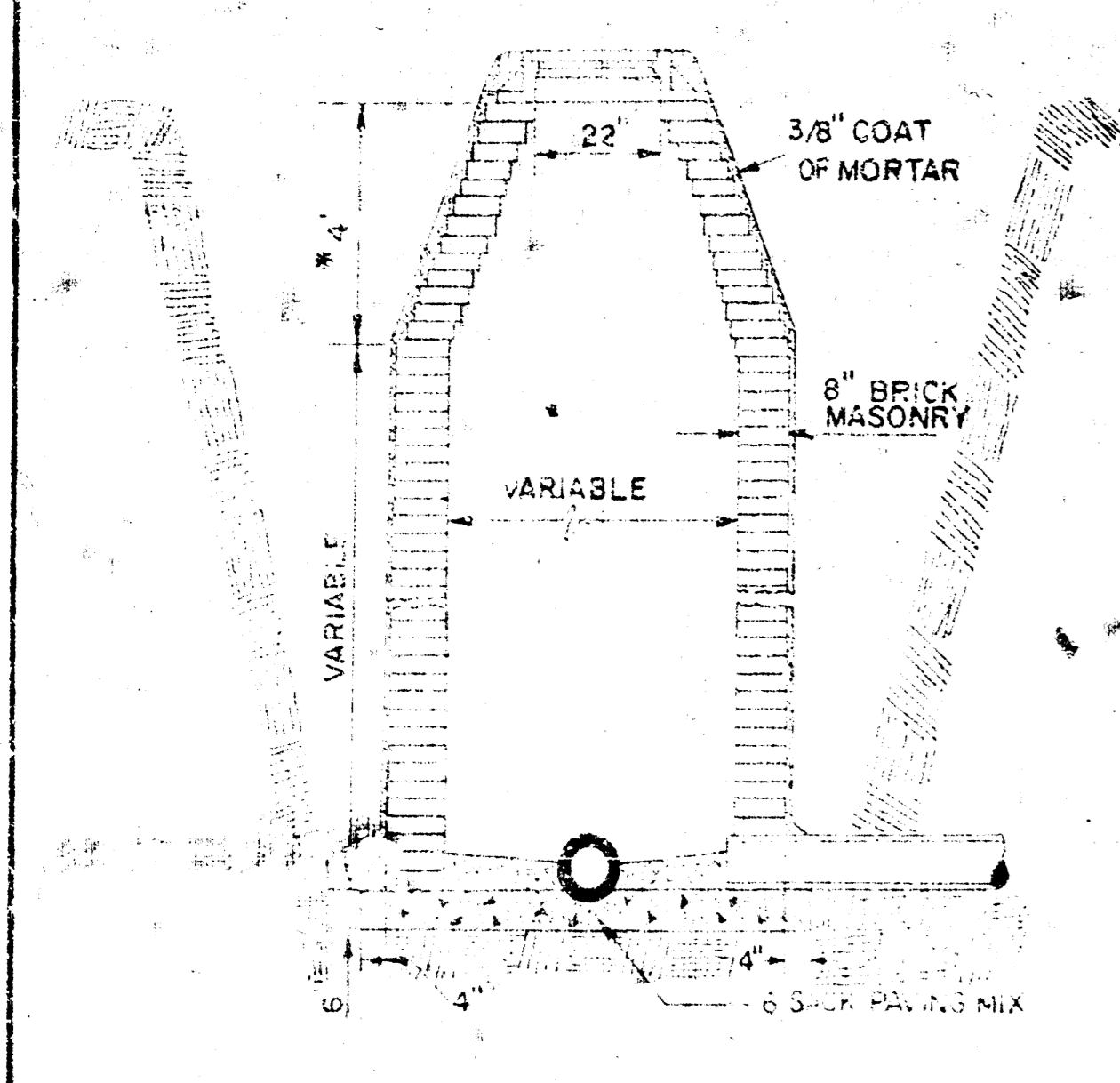
B. M. 119.79 S.W. cor SW-Wing Wall
13th & Canal Bridge.



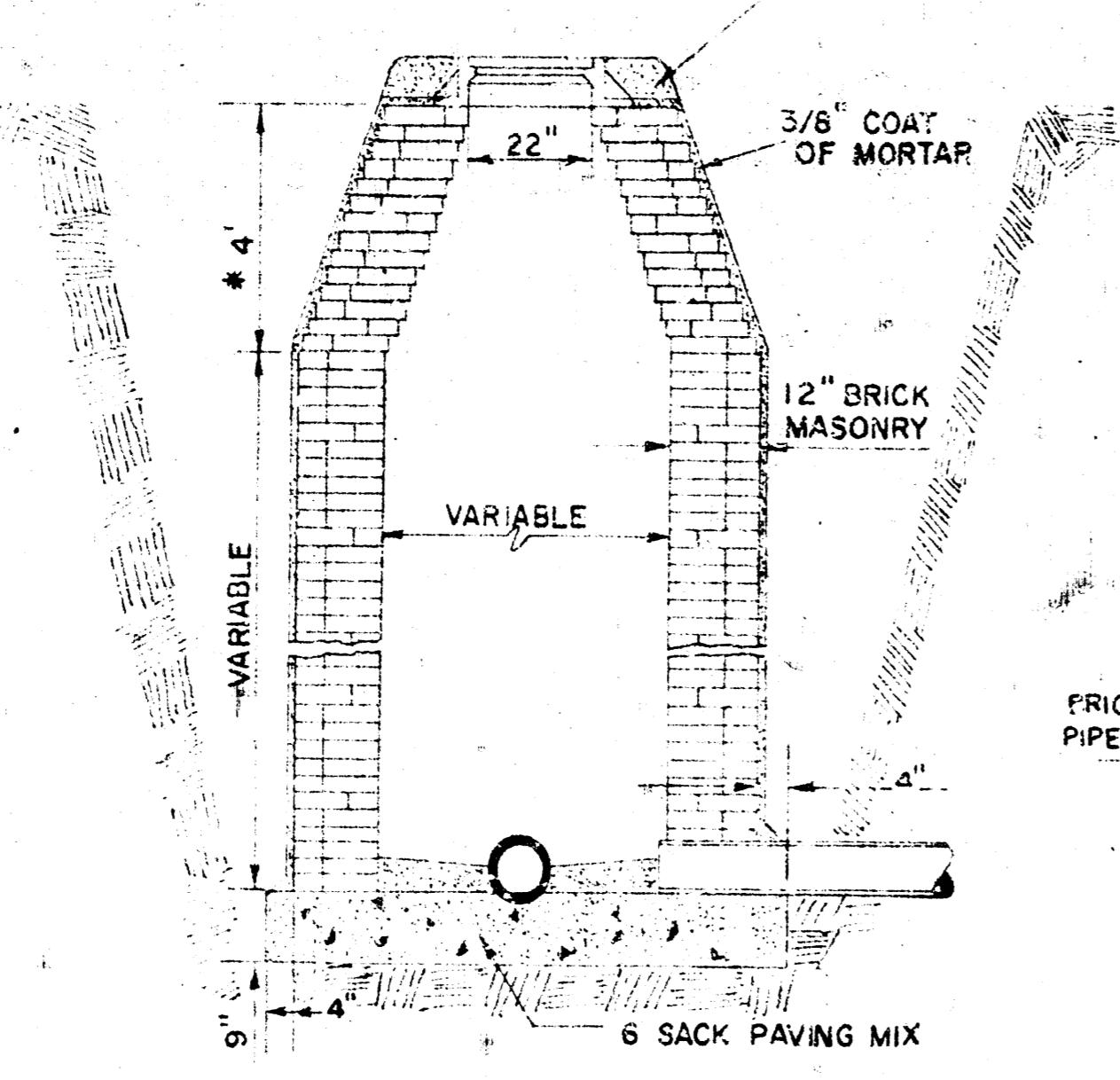
ALTERATION, REPAIR, RECONSTRUCTION OR
 CONSTRUCTION OF A SUPPLEMENTAL SEWER TO
 SAN. SEWER NO. 27
 PROJECT NO DBKLS740 69

FILMED FROM THE BEST
 AVAILABLE COPY.....

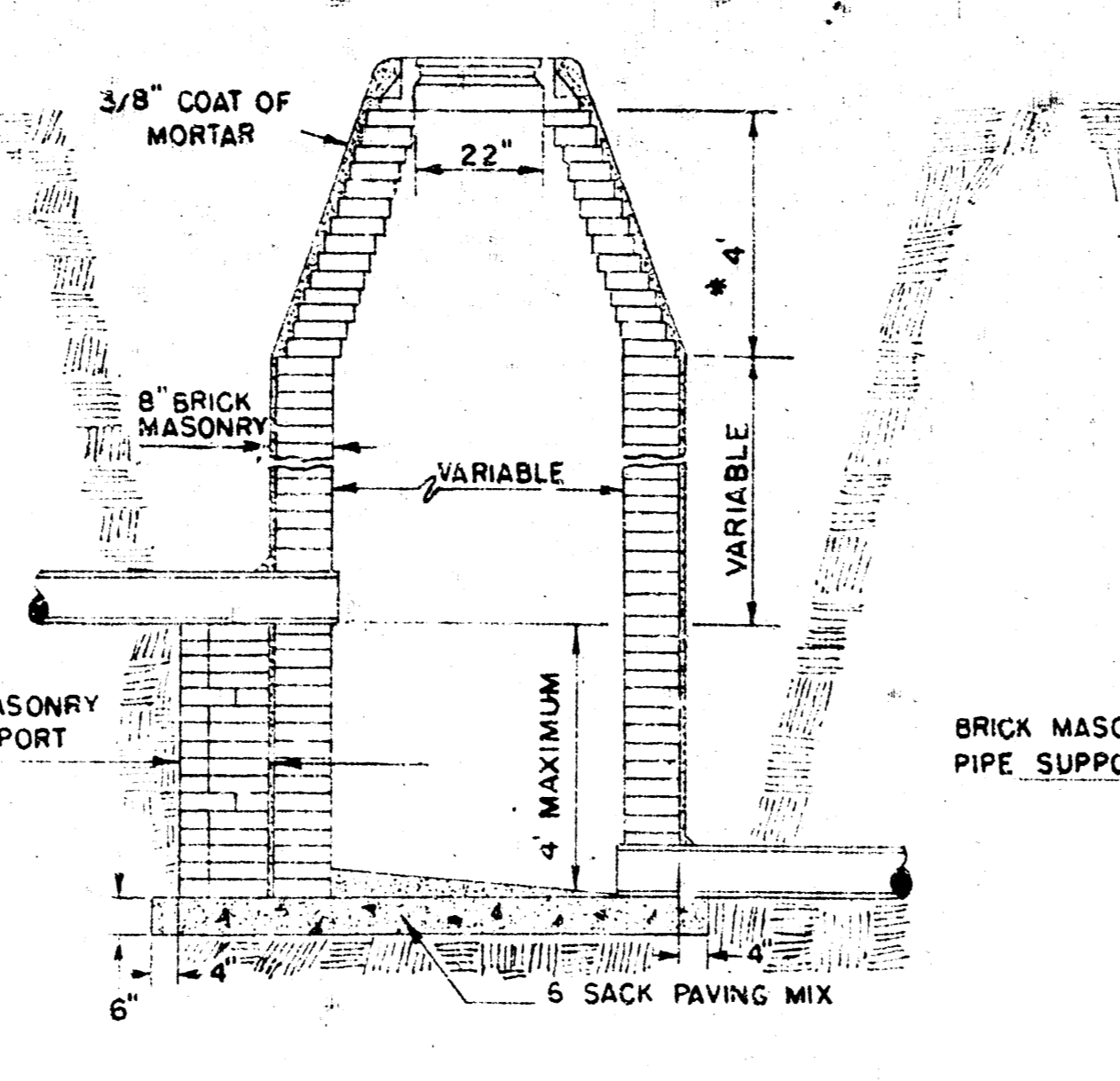
GROUT TO BE PLACED AROUND MANHOLE RING ONLY WHEN MANHOLE IS CONSTRUCTED IN UNPAVED AREAS. (TYPICAL ALL MANHOLES)



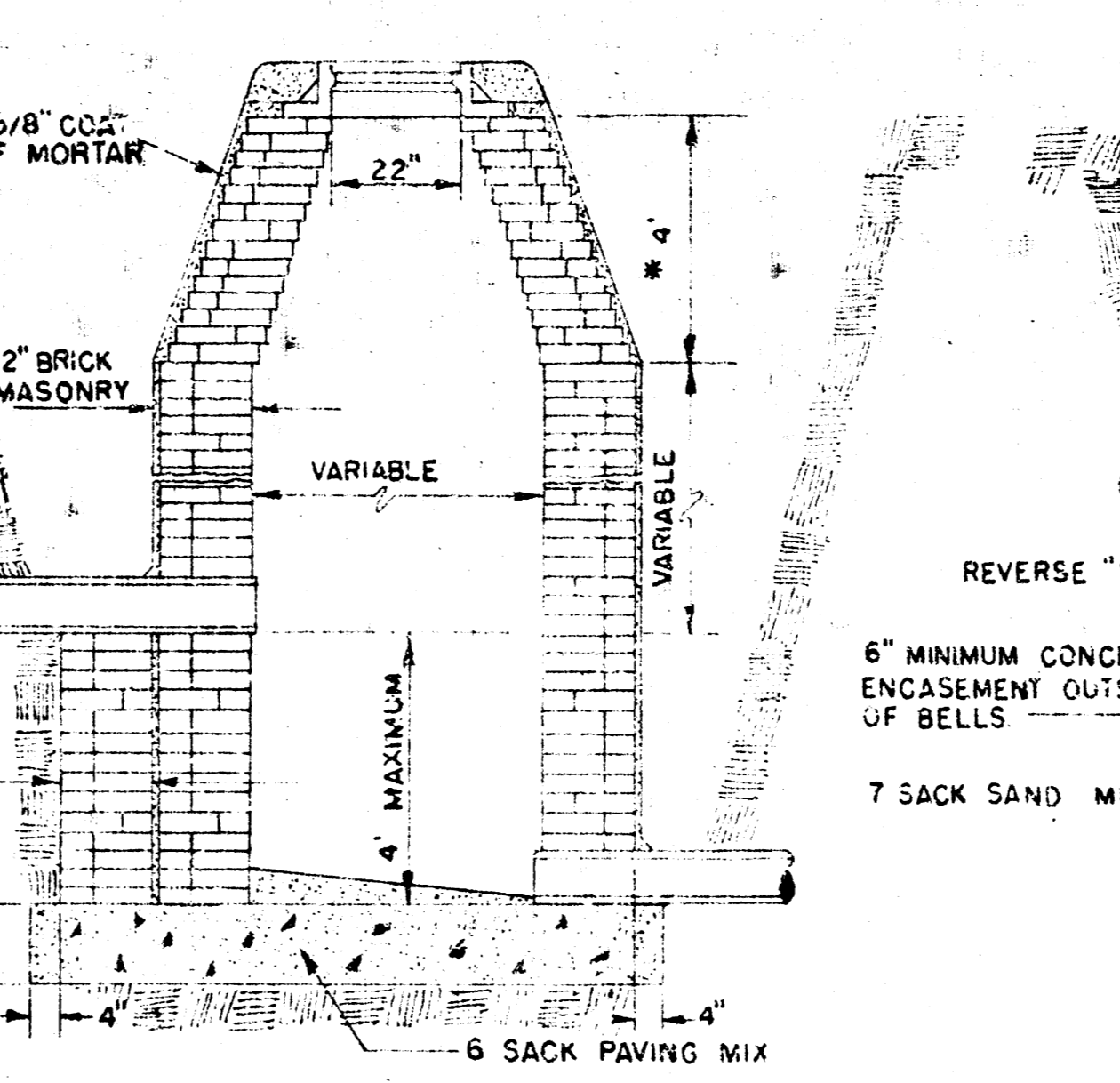
STANDARD MANHOLE TYPE "A"



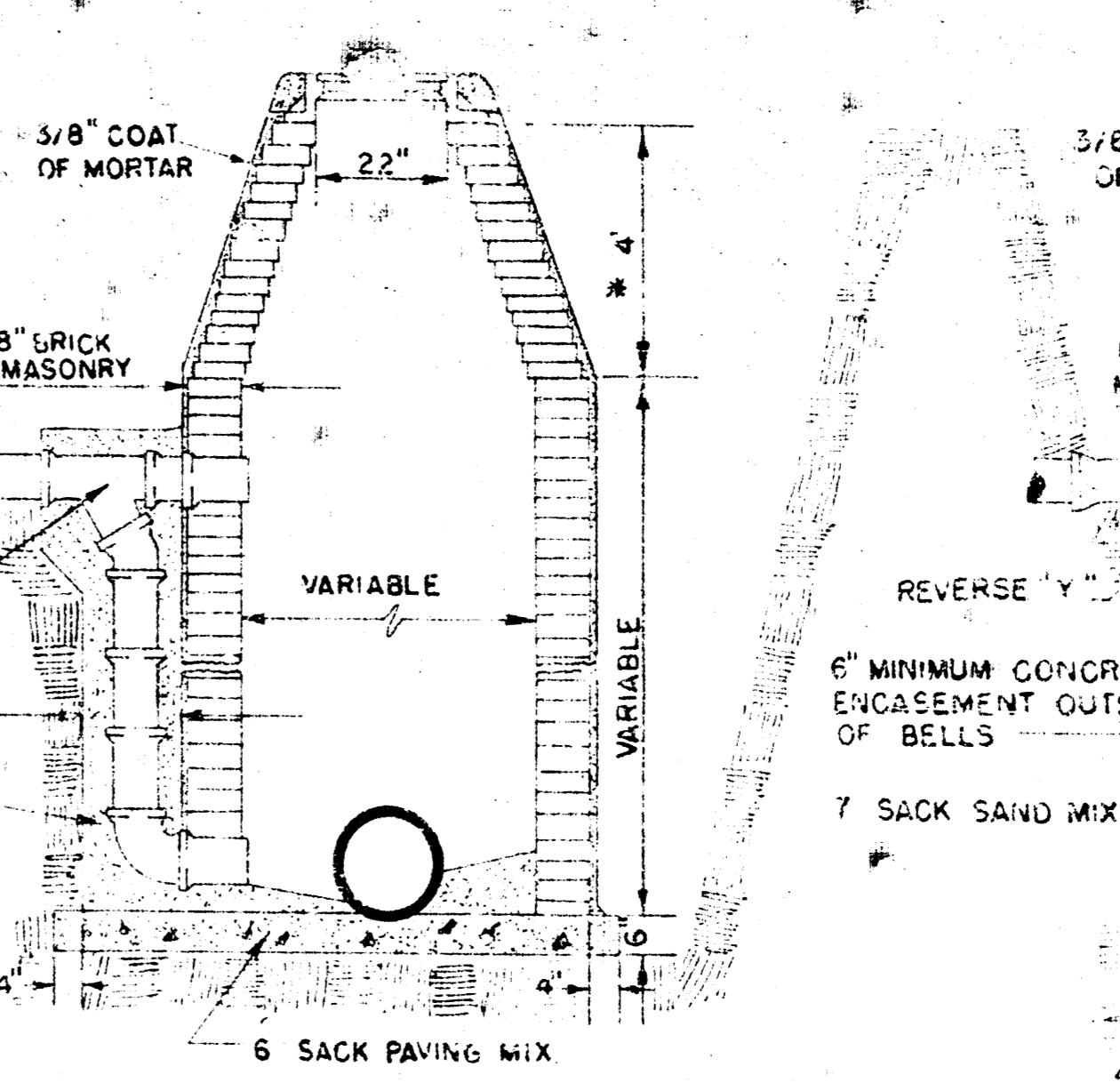
STANDARD MANHOLE TYPE "B"



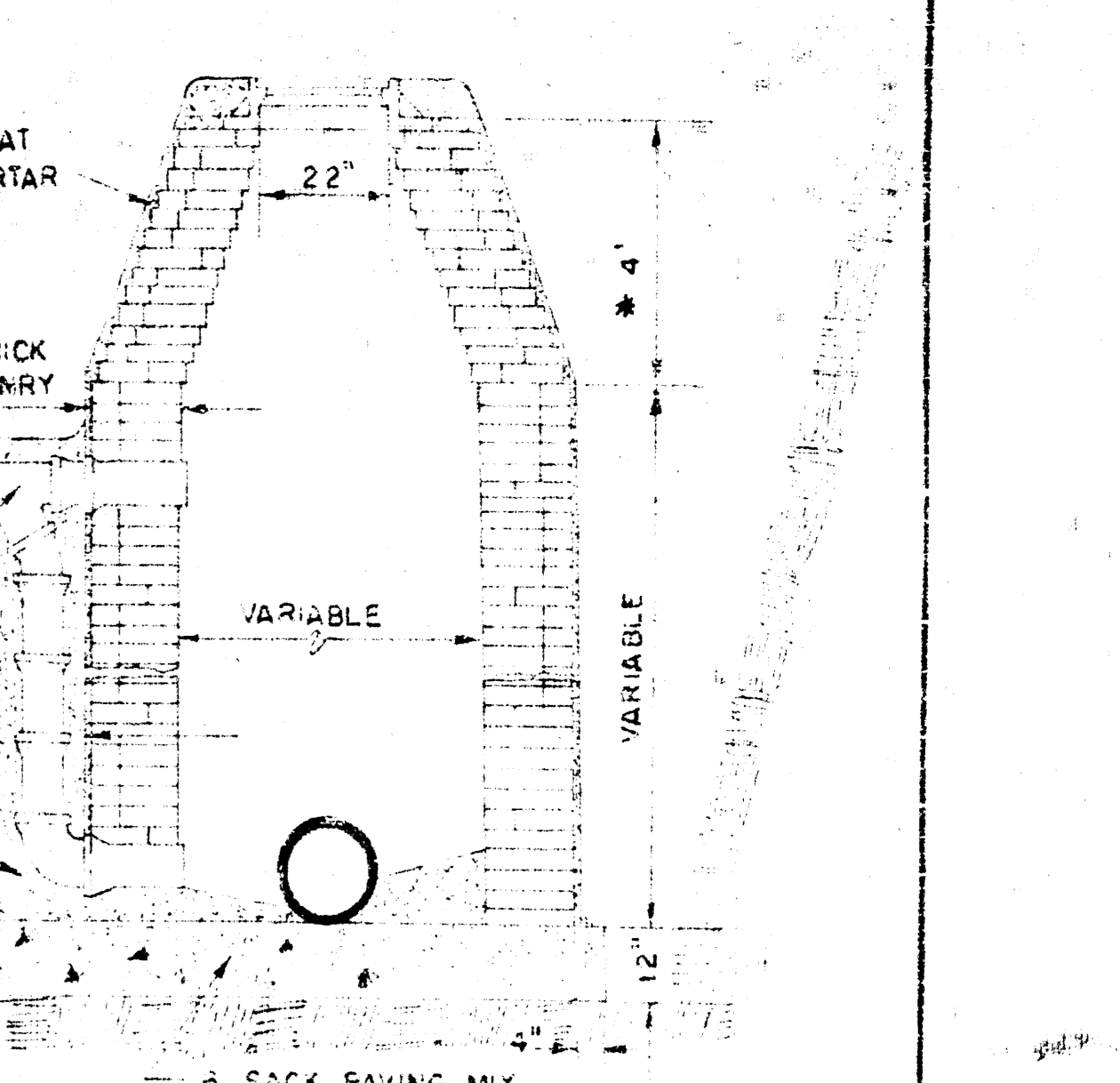
DROP MANHOLE TYPE "A"



DROP MANHOLE TYPE "B"

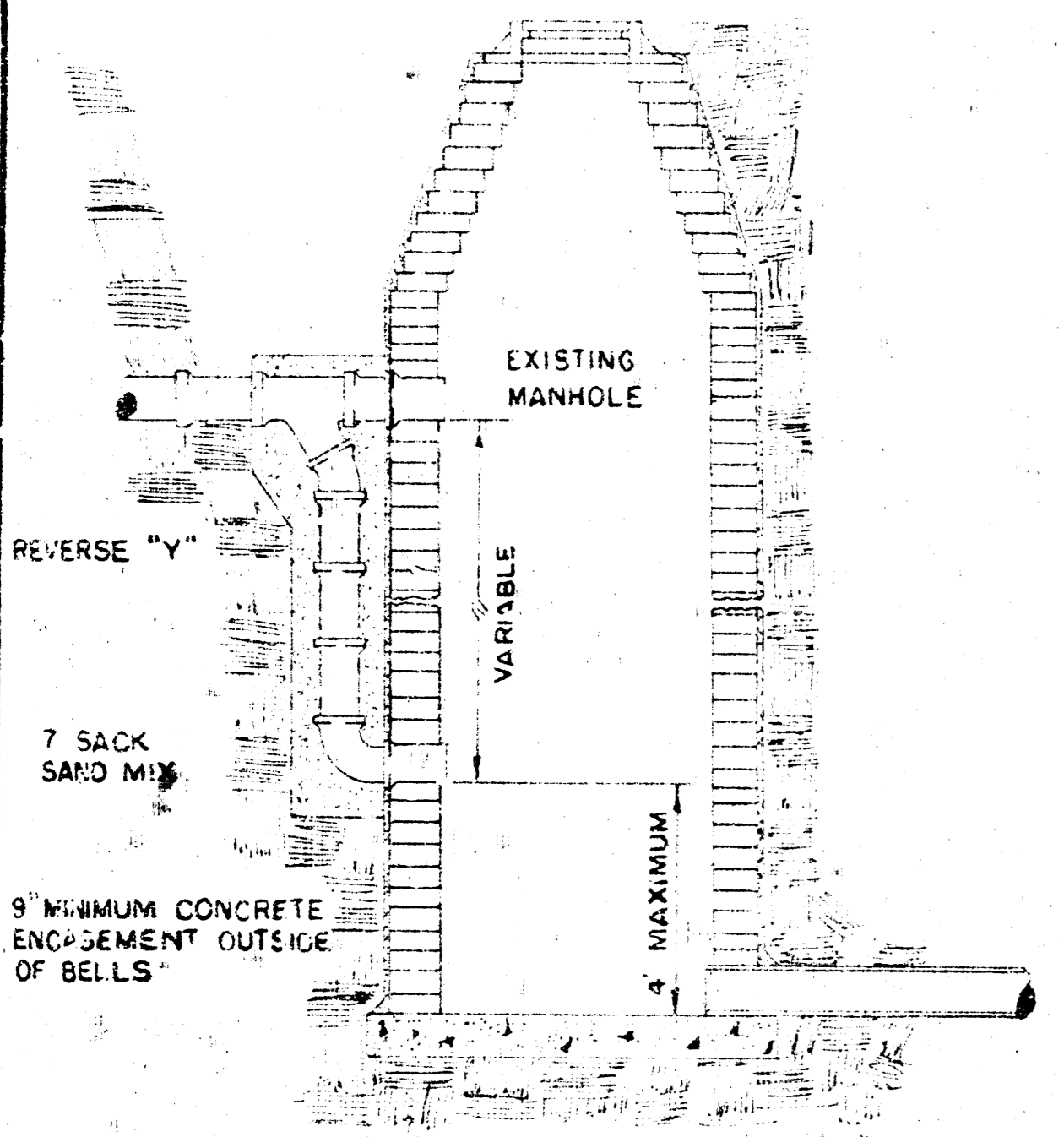


OUTSIDE DROP MANHOLE TYPE "A"

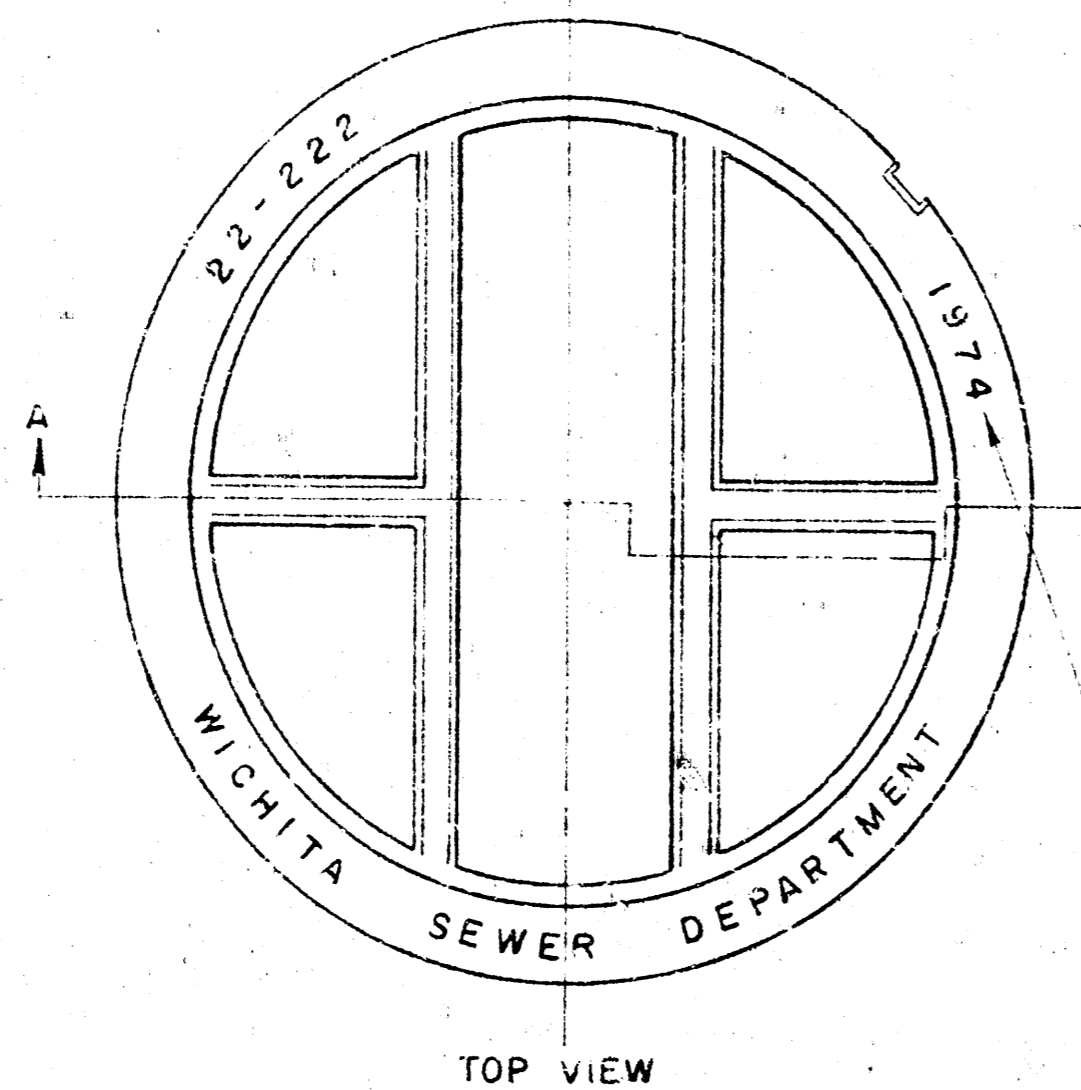


OUTSIDE DROP MANHOLE TYPE "B"

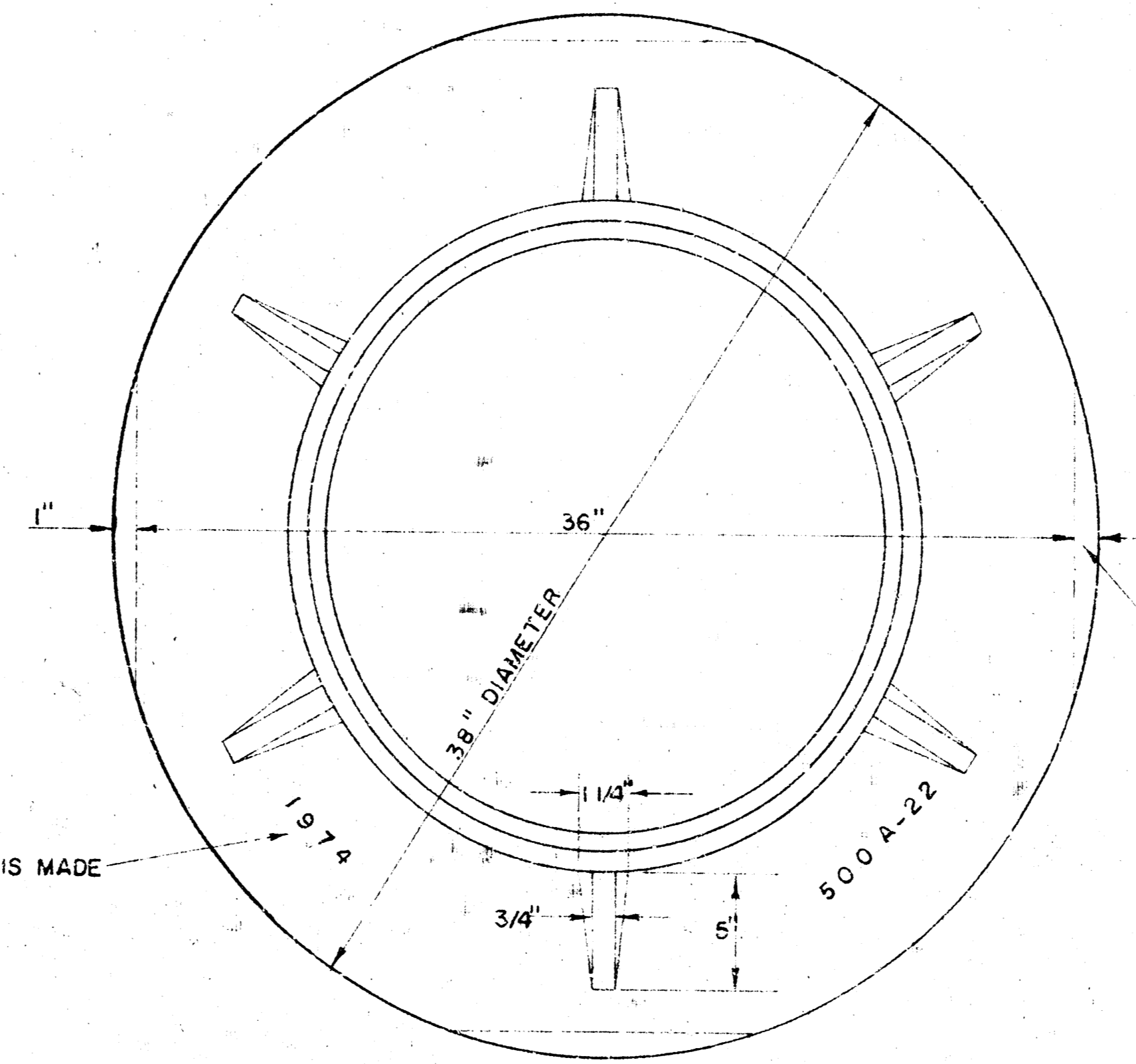
DRAW = 6' ON 5' DIA. M.H.



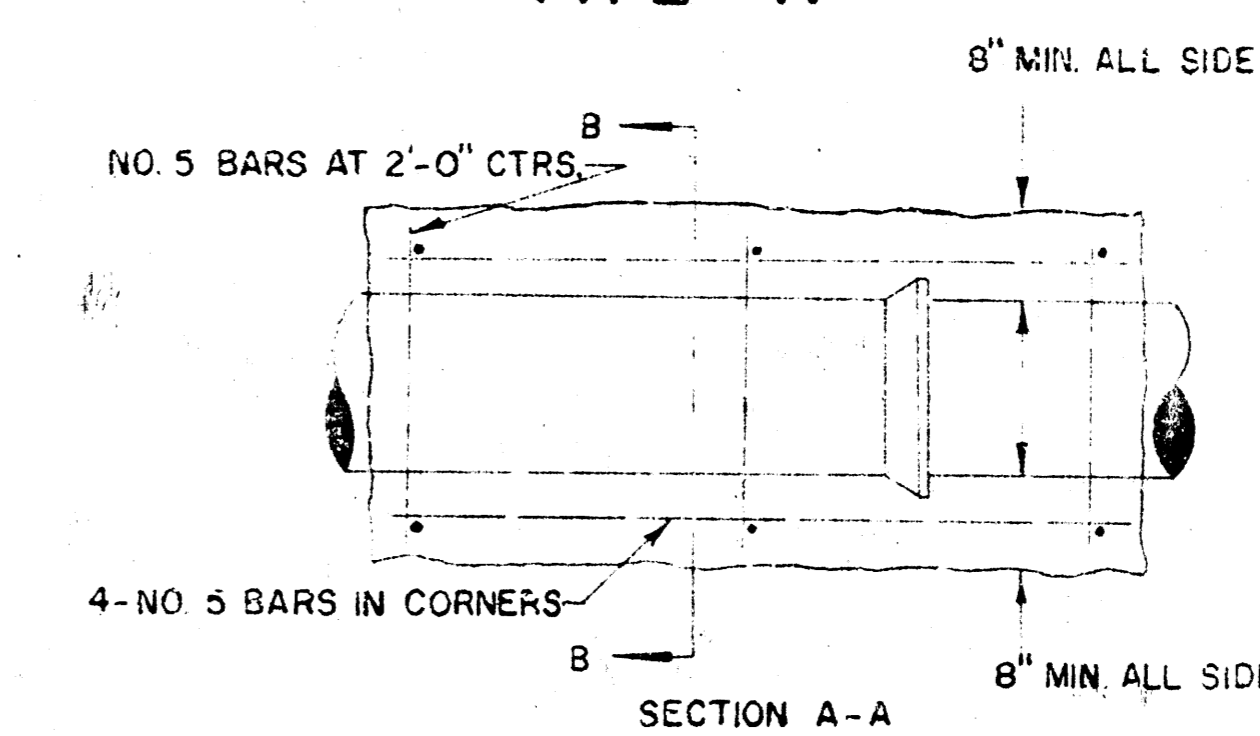
DETAIL OF DROP STACK FOR EXISTING MANHOLES IN GROUND WATER



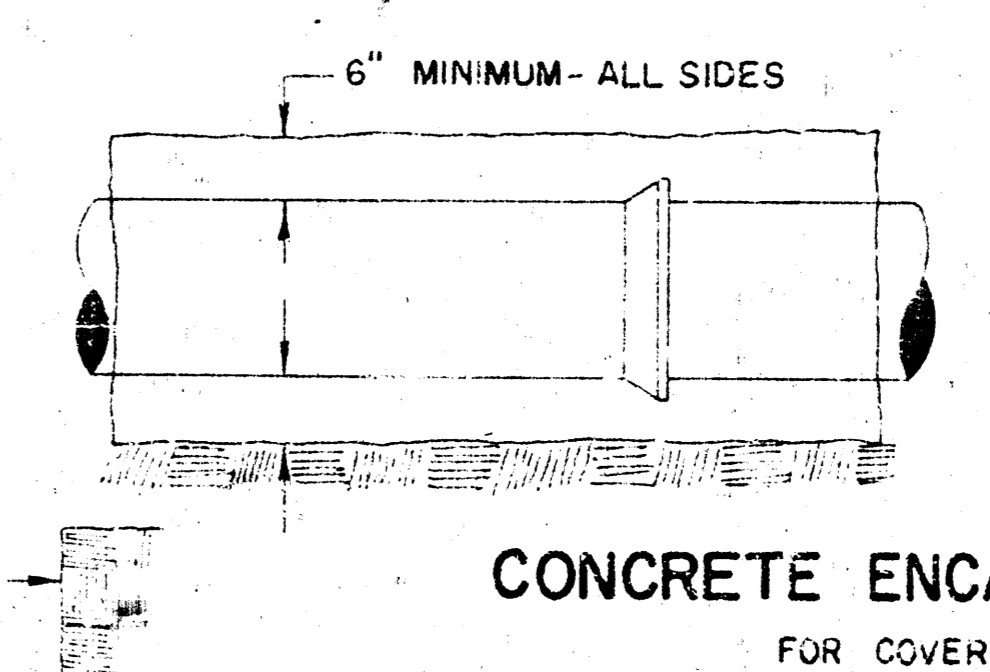
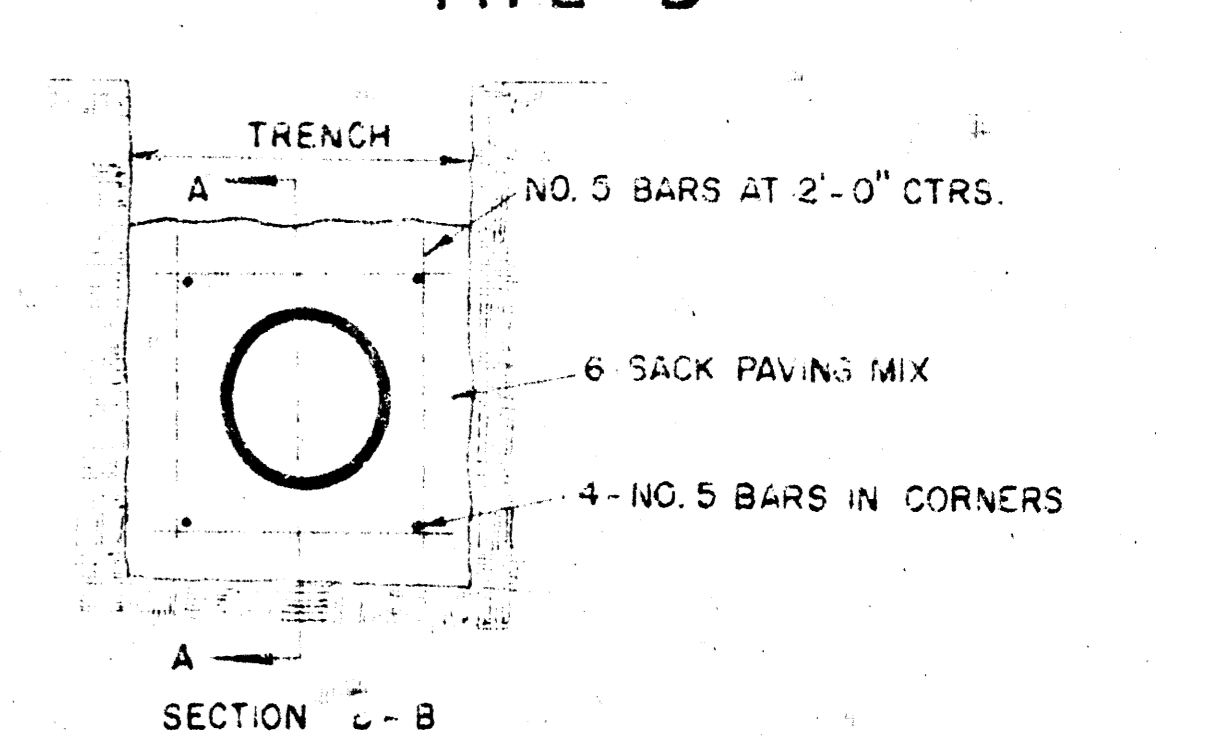
MANHOLE COVER WEIGHT 110 LBS.



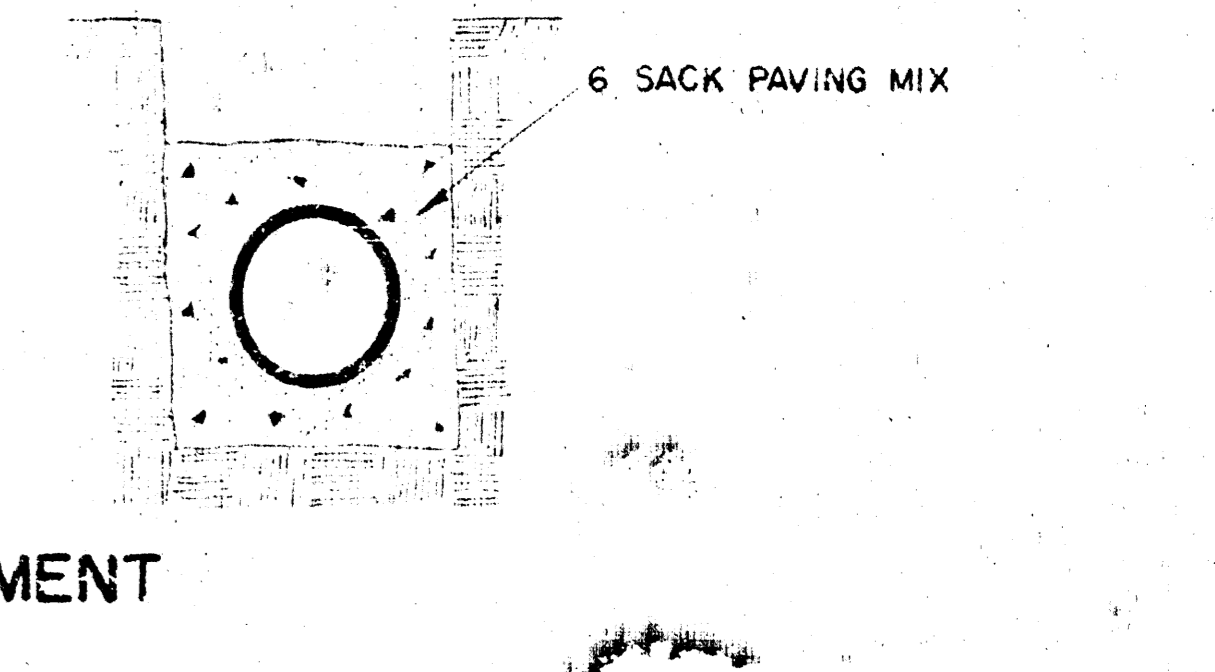
MANHOLE RING WEIGHT 325 LBS. RING NO. 500A WEIGHT 800 LBS. RING NO. 500AS



REINFORCED CONCRETE ENCASEMENT FOR STRENGTH



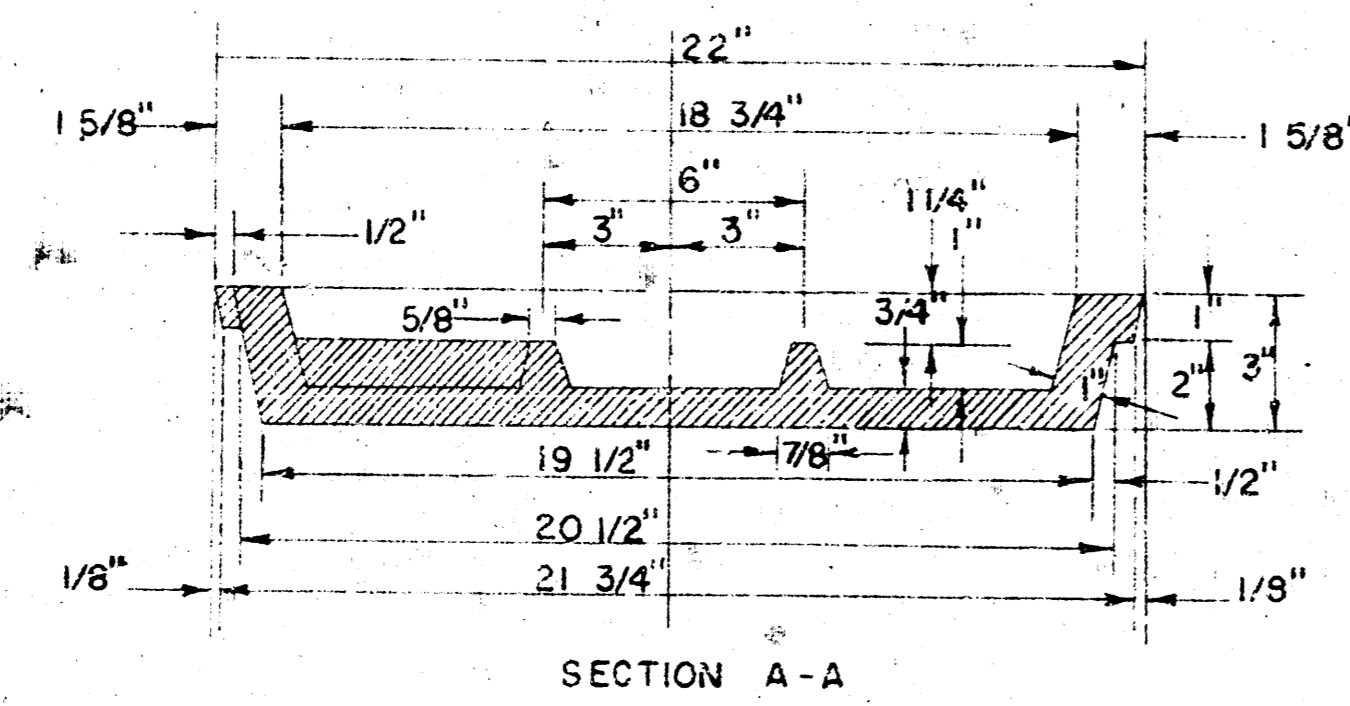
CONCRETE ENCASEMENT FOR COVER



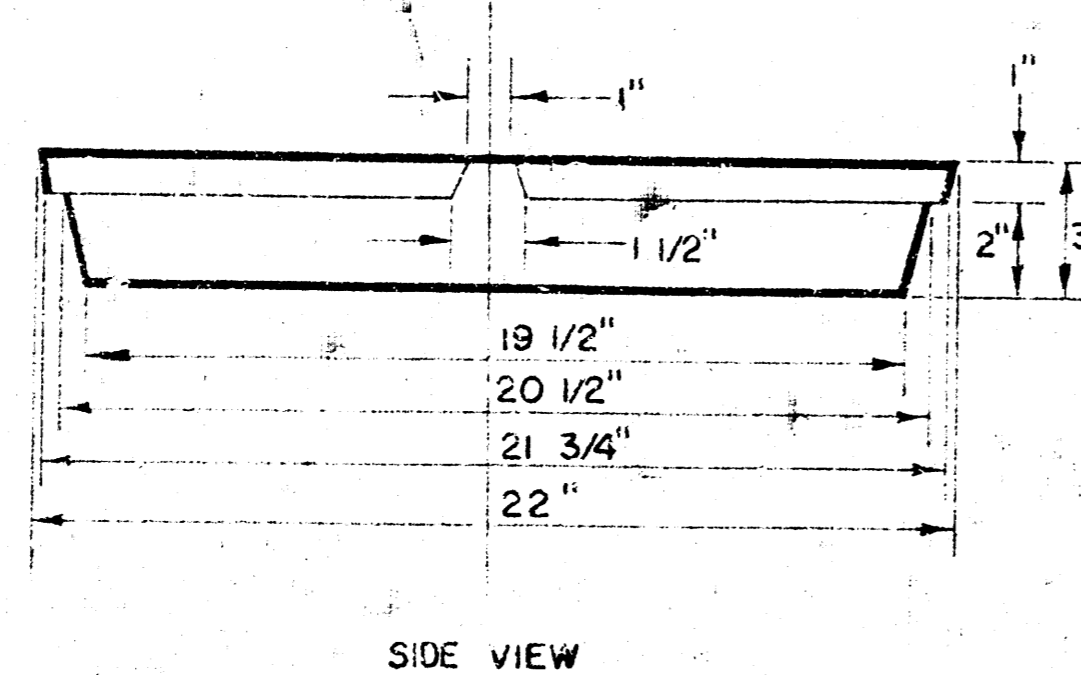
ORDINARY BEDDING METHOD FOR CLAY PIPE

GENERAL NOTES

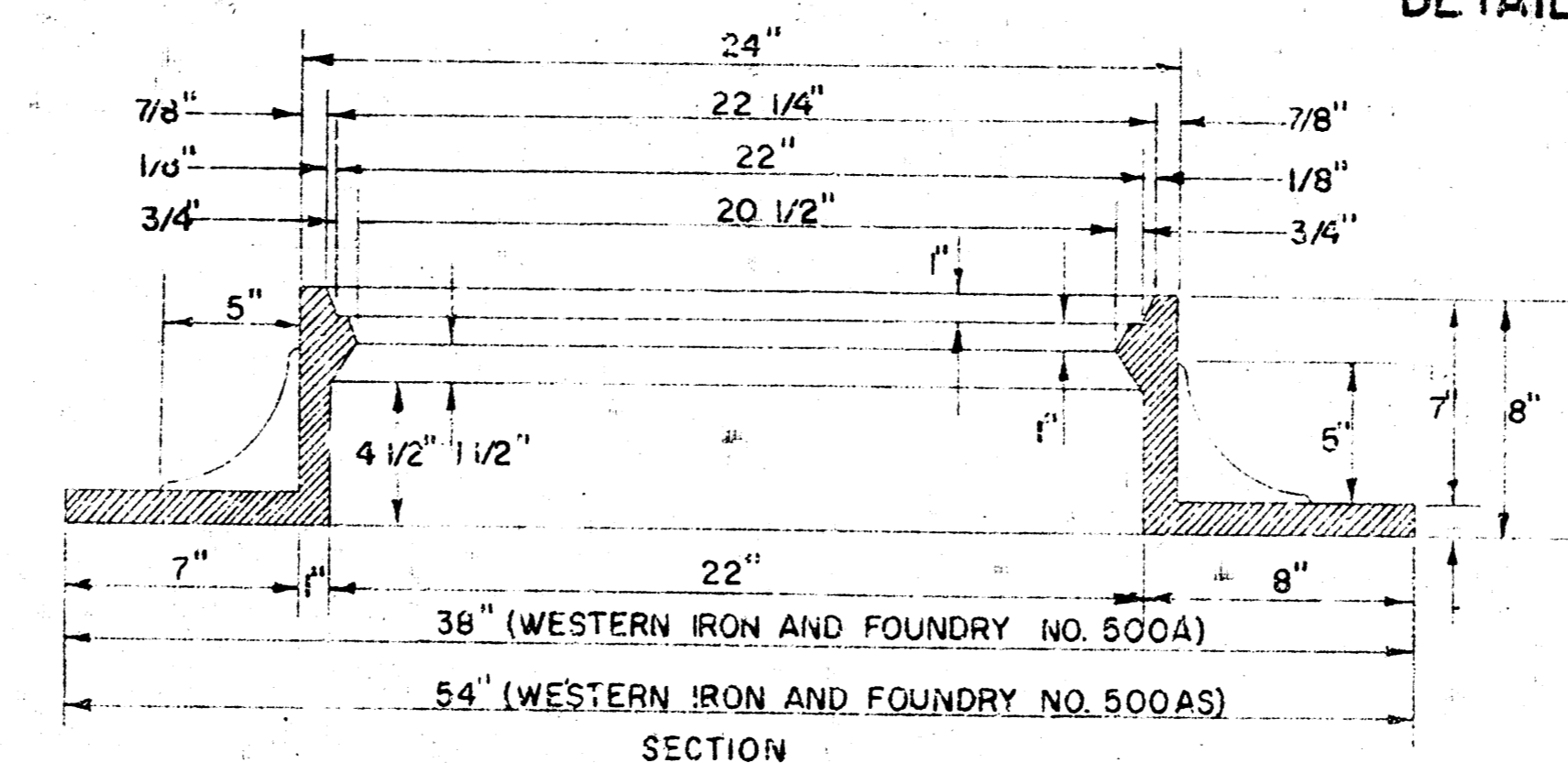
- MORTAR USED IN MASONRY CONSTRUCTION SHALL CONTAIN 8 SACKS OF CEMENT PER CUBIC YARD.
- STANDARD MANHOLES TYPE "A" OR TYPE "B" AND STANDARD DROP MANHOLES TYPE "A" OR TYPE "B" SHALL BE BID AS STANDARD MANHOLES FOR THE TYPE AND DIAMETER INDICATED.
- OUTSIDE DROP MANHOLES SHALL BE BID AS STANDARD OUTSIDE DROP MANHOLES FOR THE TYPE AND DIAMETER INDICATED.
- ALL MANHOLE DIAMETERS WILL BE 4 UNLESS INDICATED OTHERWISE.
- MANHOLES WITH PIPE SIZES LARGER THAN 24" SHALL BE 5" DIAMETER.
- THE FLOORS OF ALL MANHOLES SHALL BE SHAPED TO INCREASE HYDRAULIC EFFICIENCY USING 8 SACK SAND MIX CONCRETE.



MANHOLE COVER

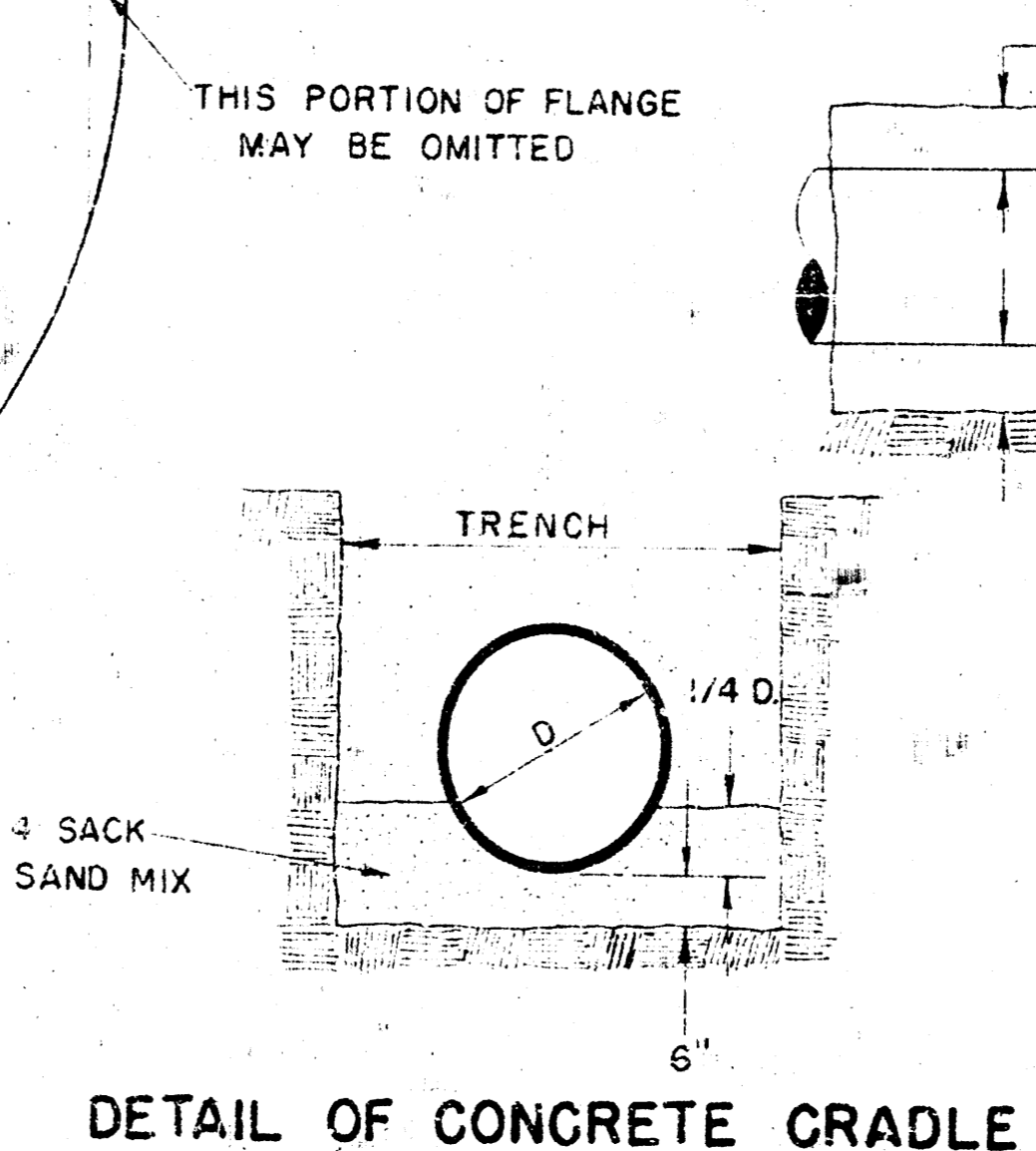


MANHOLE COVER

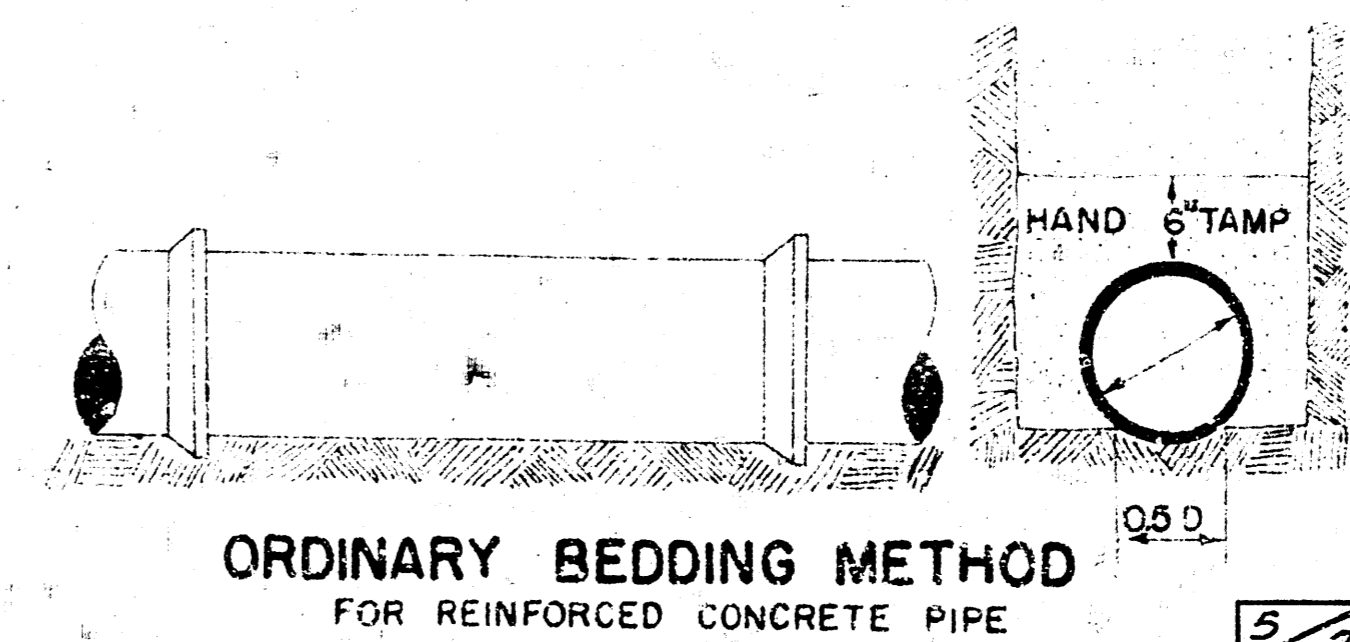


MANHOLE RING

OUTSIDE CIRCUMFERENCE OF COVER AND THE INNER FACE AND SEAT OF RING TO BE MACHINE FIT.



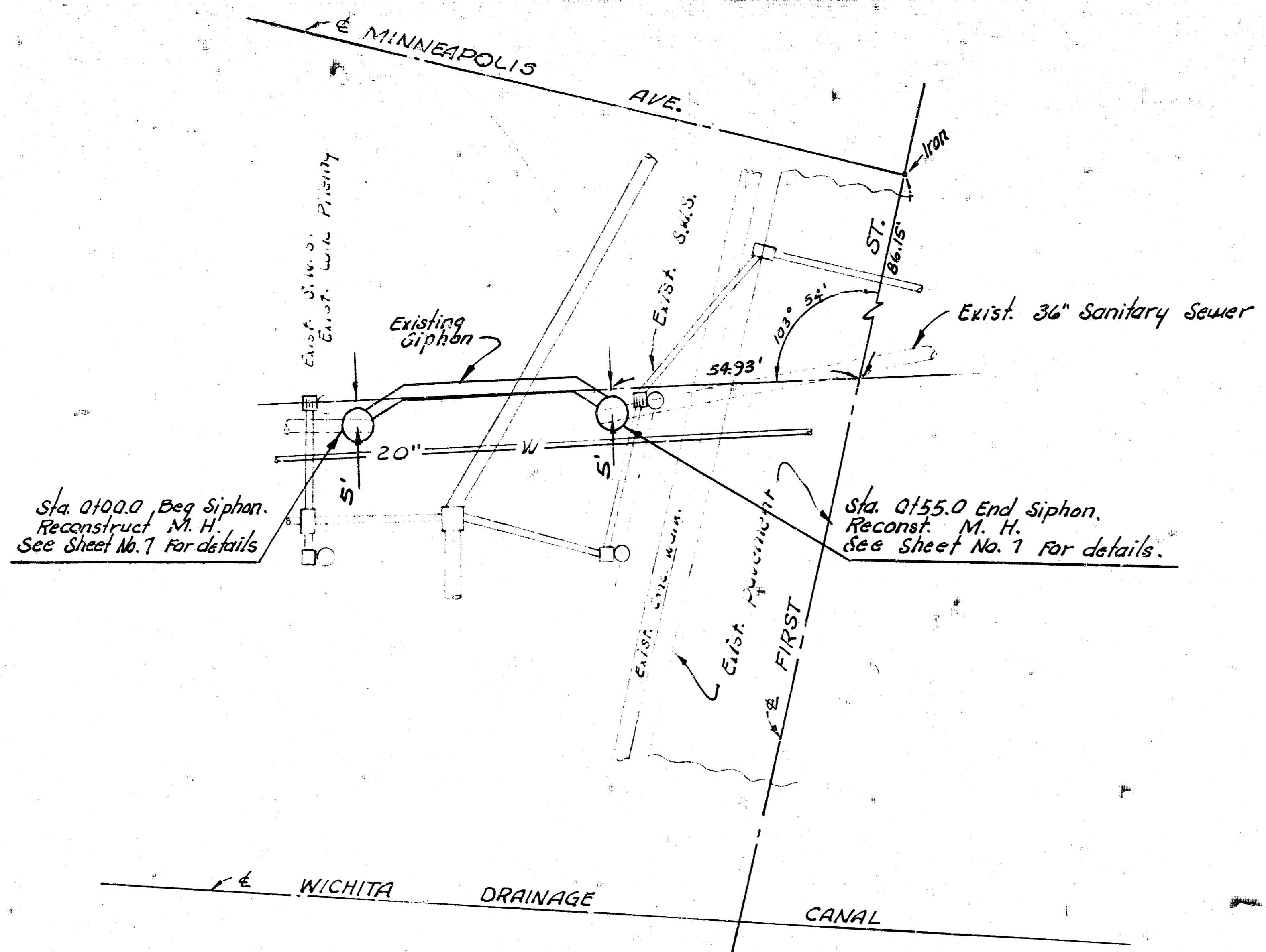
DETAIL OF CONCRETE CRADLE



ORDINARY BEDDING METHOD FOR REINFORCED CONCRETE PIPE

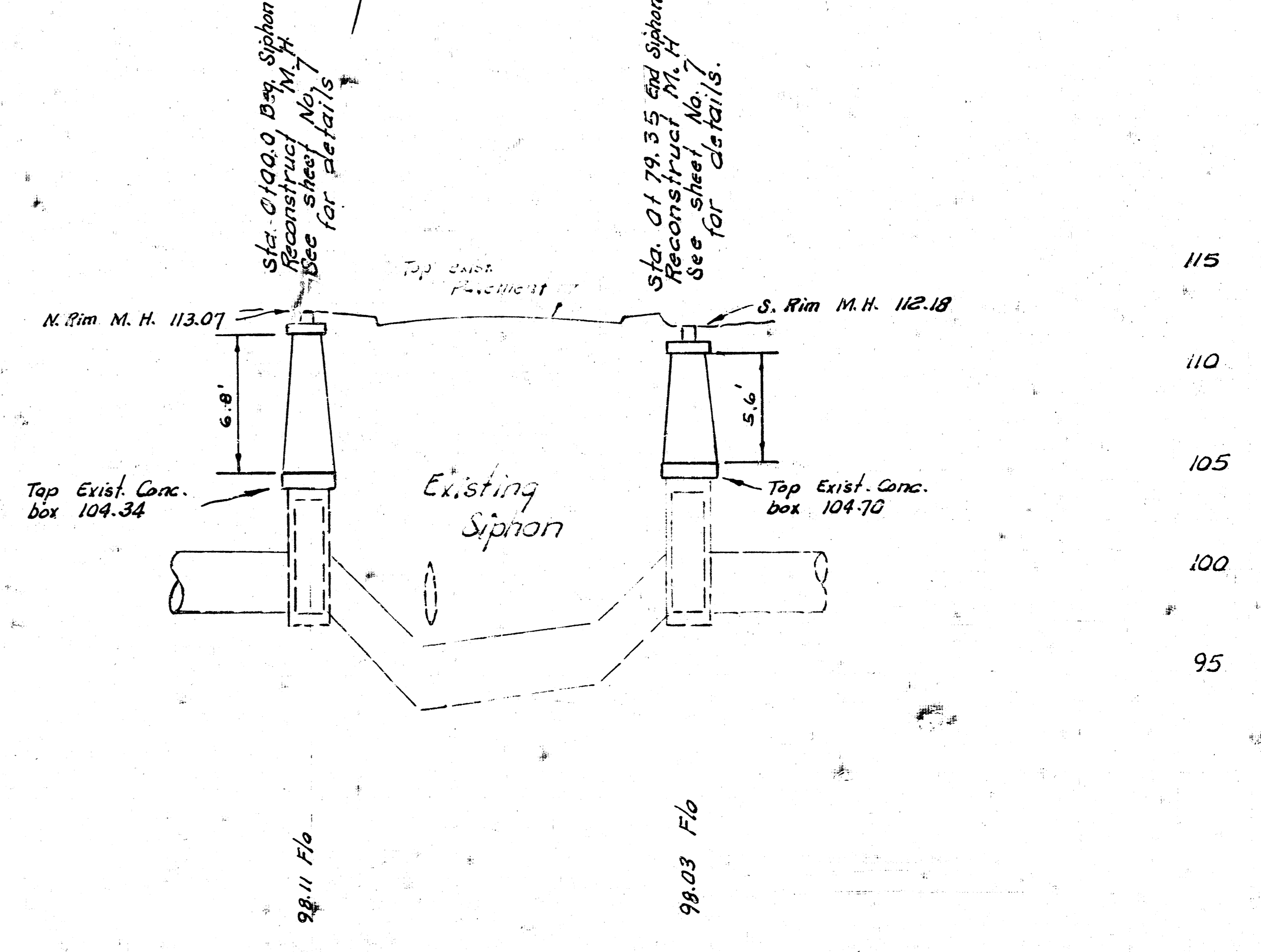
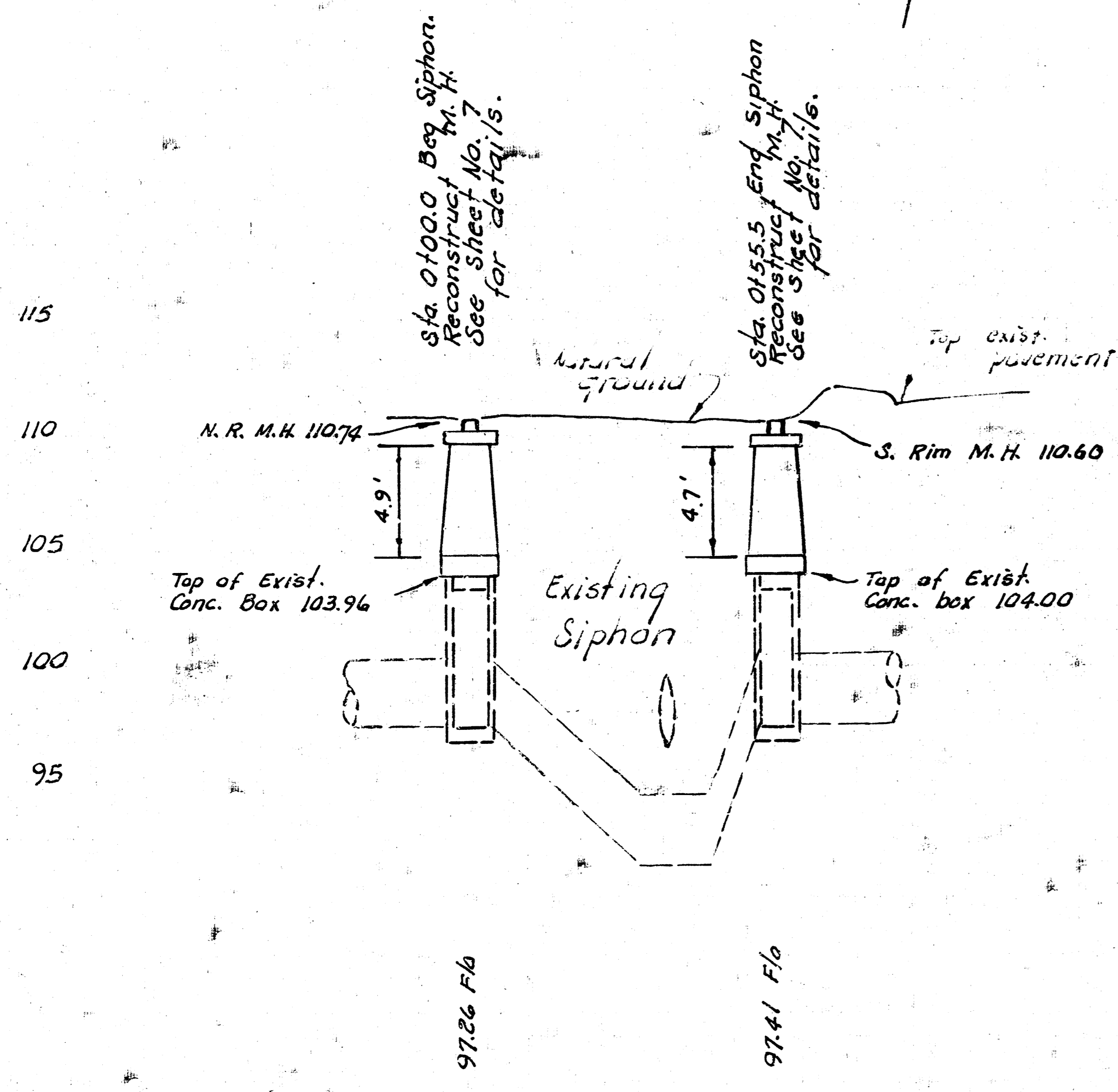
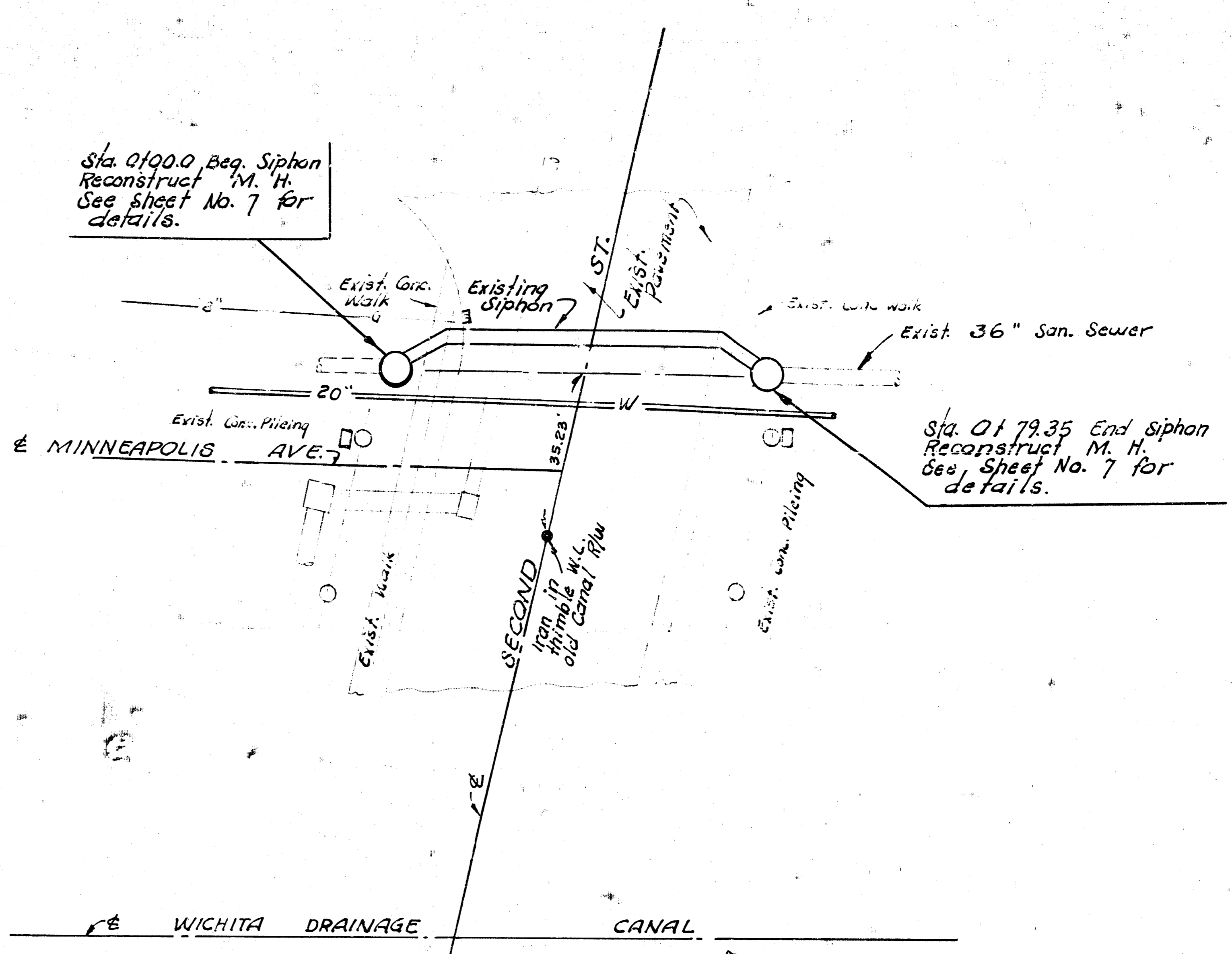
DETAILS OF SEWER APPURTENANCES ADOPTED AS STANDARD DESIGN BY ENGINEERING DIVISION CITY OF WICHITA, KANSAS R. W. LINN CITY ENGINEER 1974

FILMED FROM THE BEST AVAILABLE COPY....



Plan Scale 1" = 20'
 Profile Scale 1" = 20' Horiz.
 1" = 5' Vert.

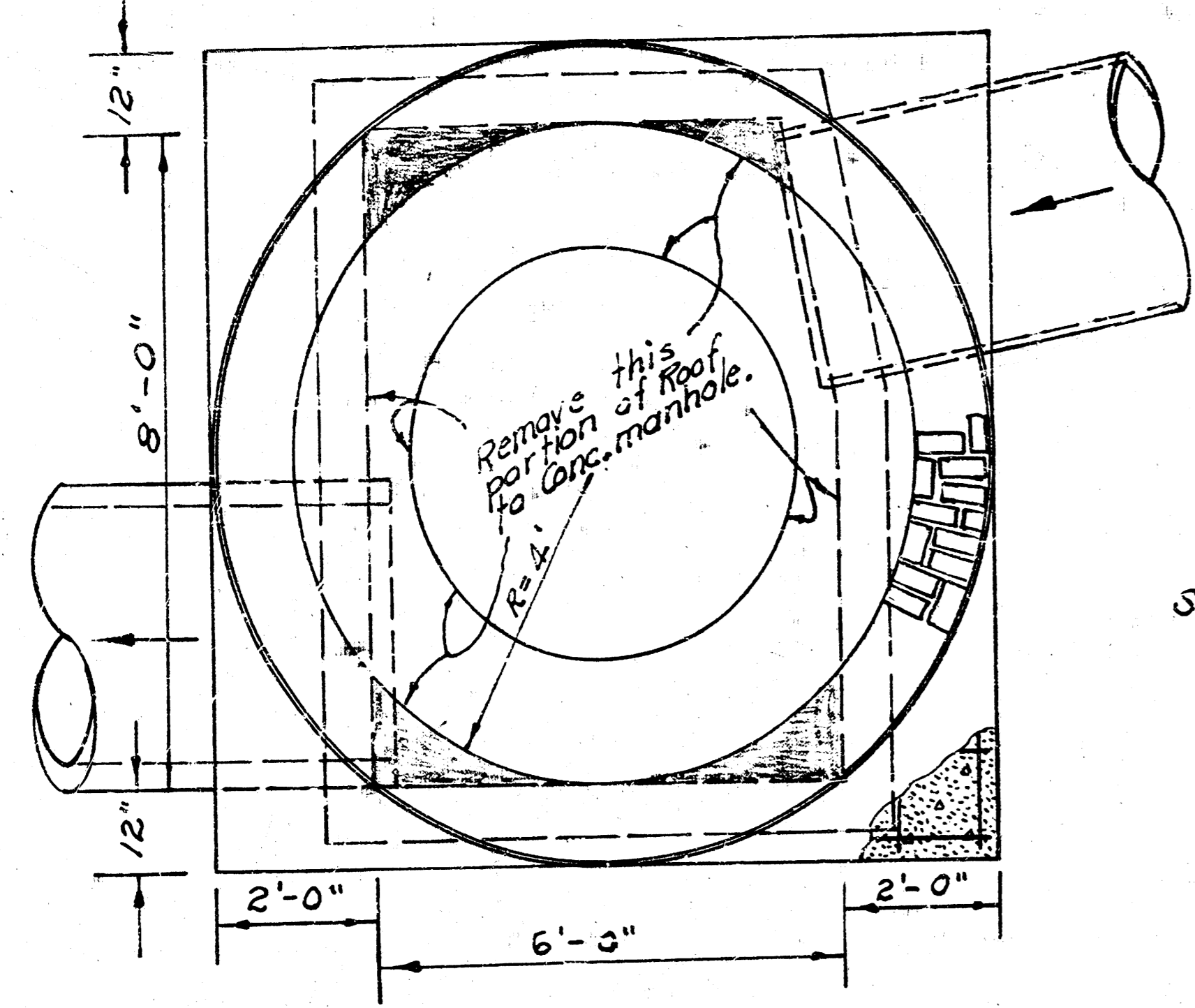
B.M. 111.89 NW cor. conc. step @ Ent
 to bldg. @ 1633 E. 2nd St.
 B.M. 111.17 S.E. cor. conc. wk. E. Side
 Southwest Electric Co. on N.W. cor.
 1st St. & Hydraulic.



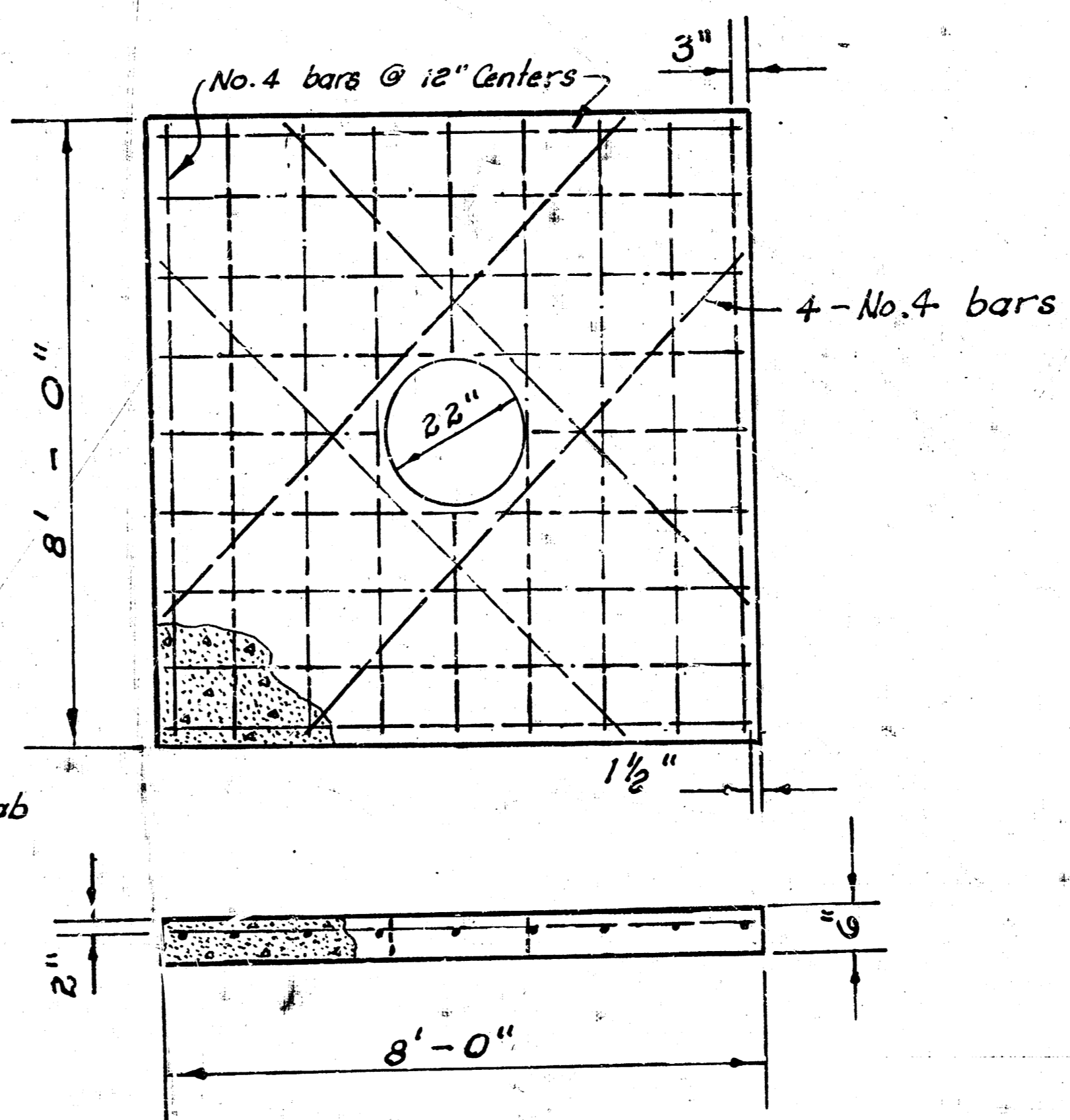
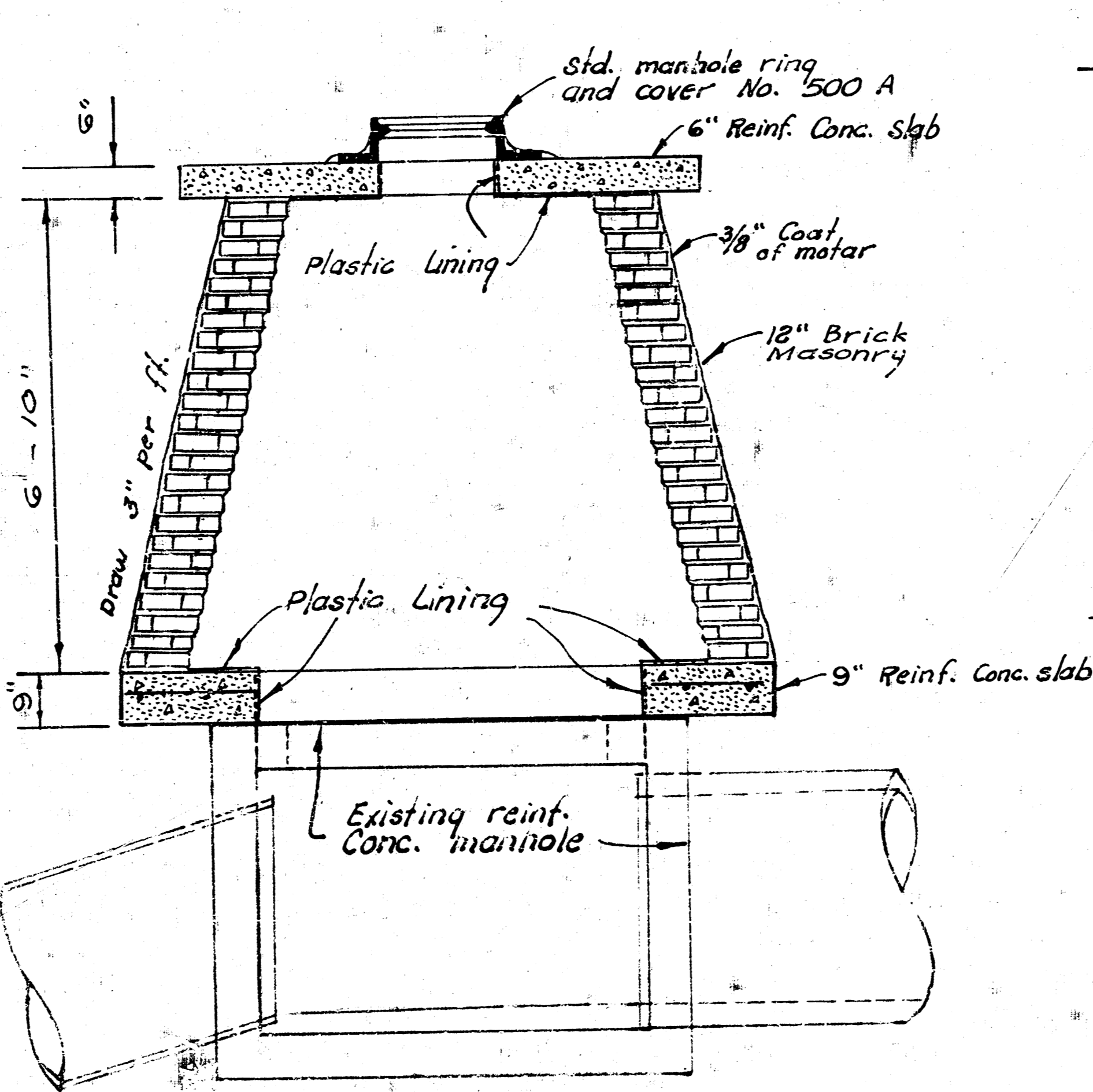
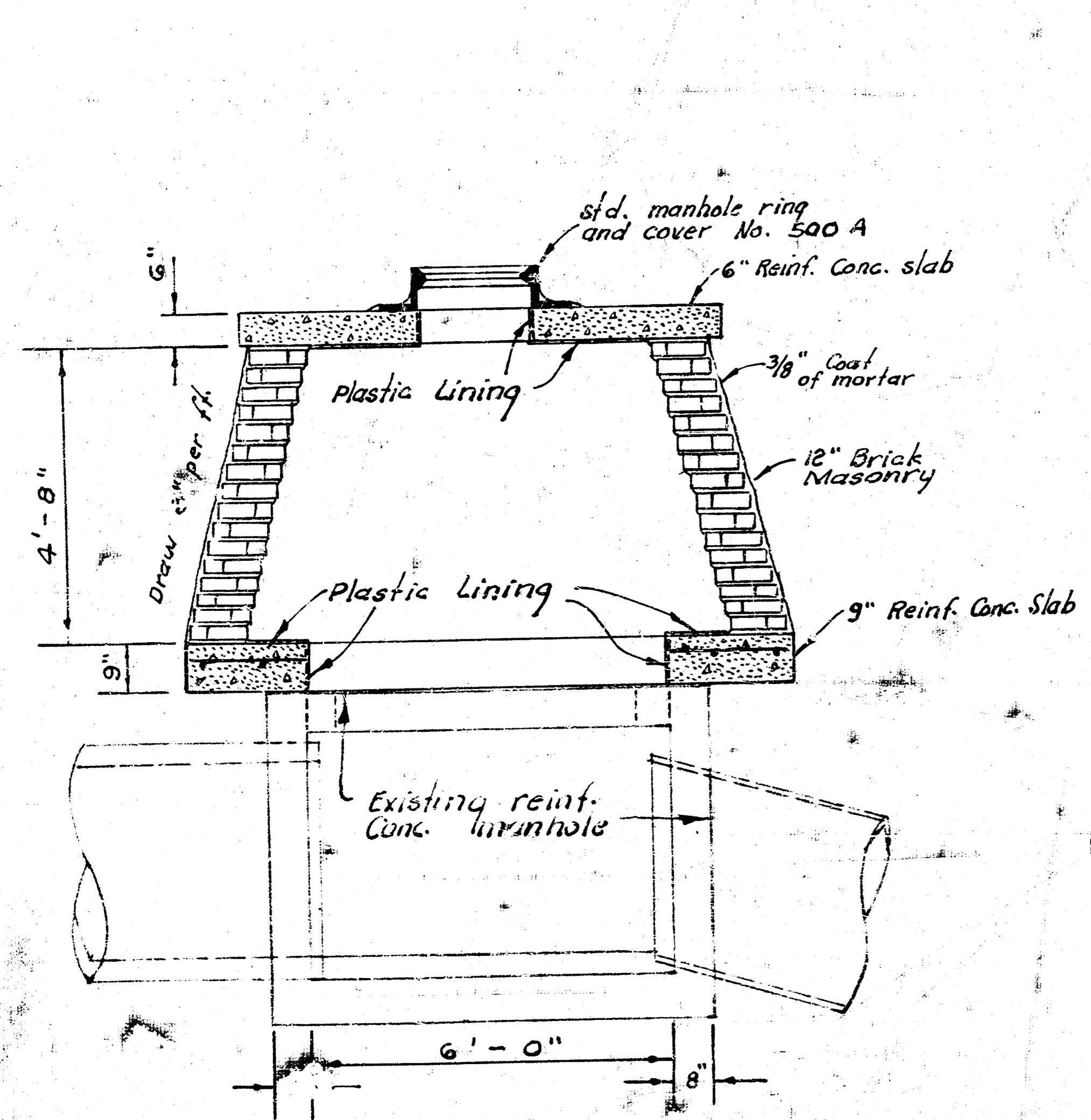
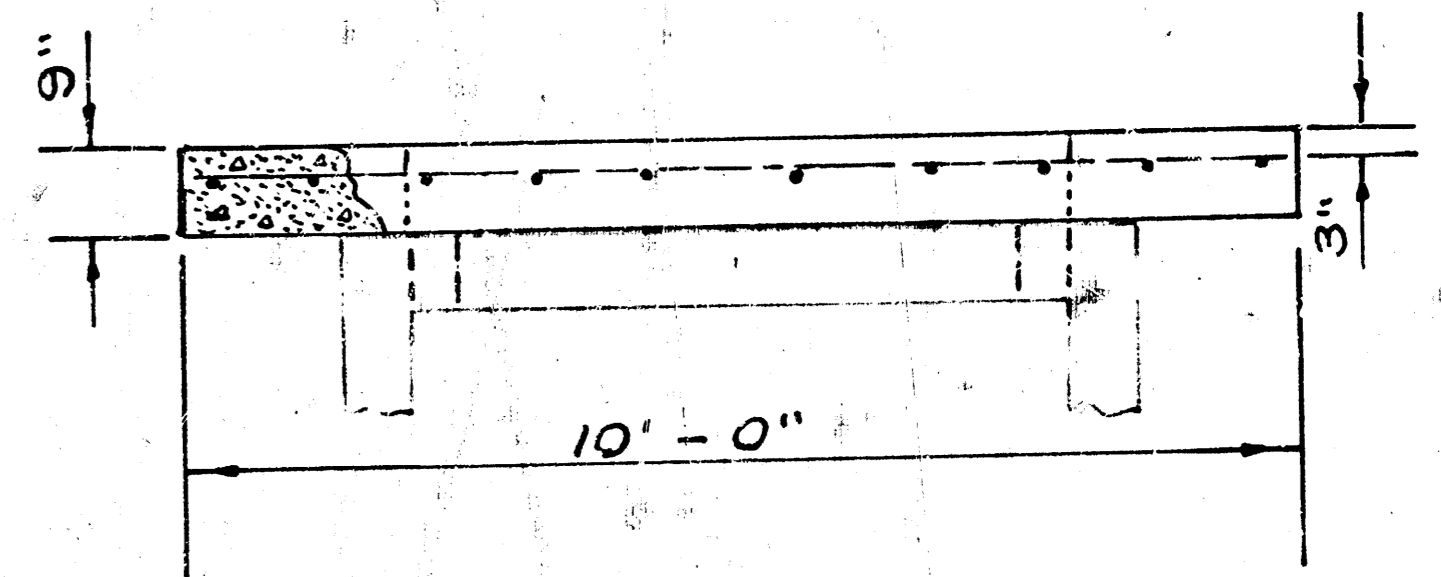
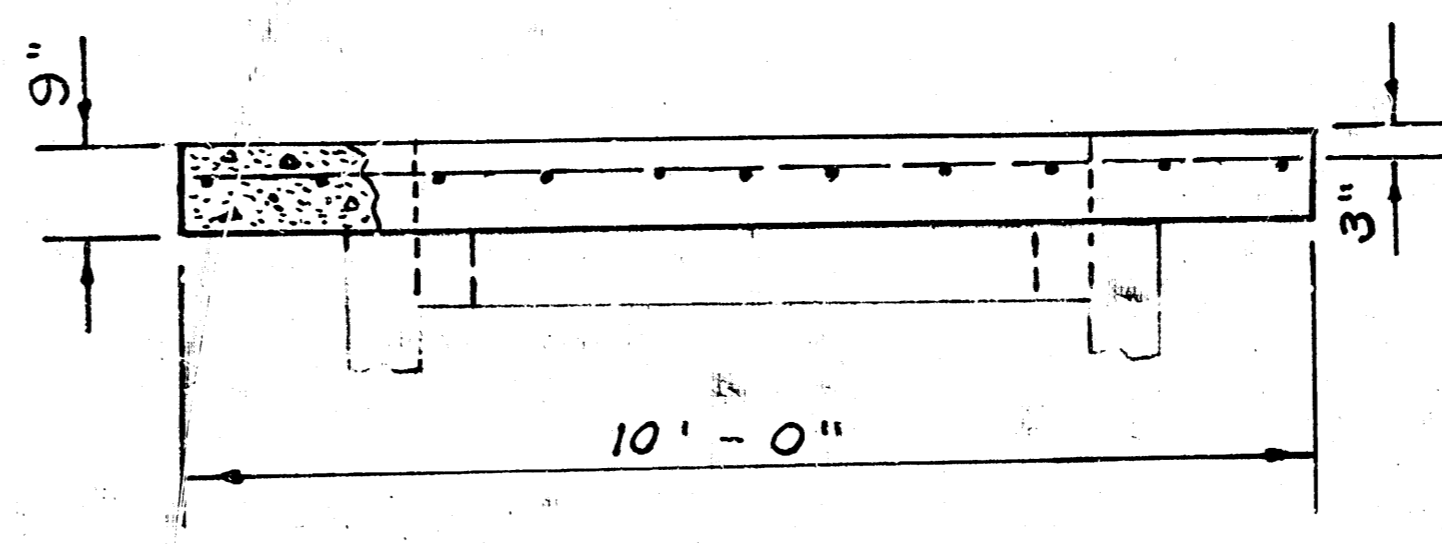
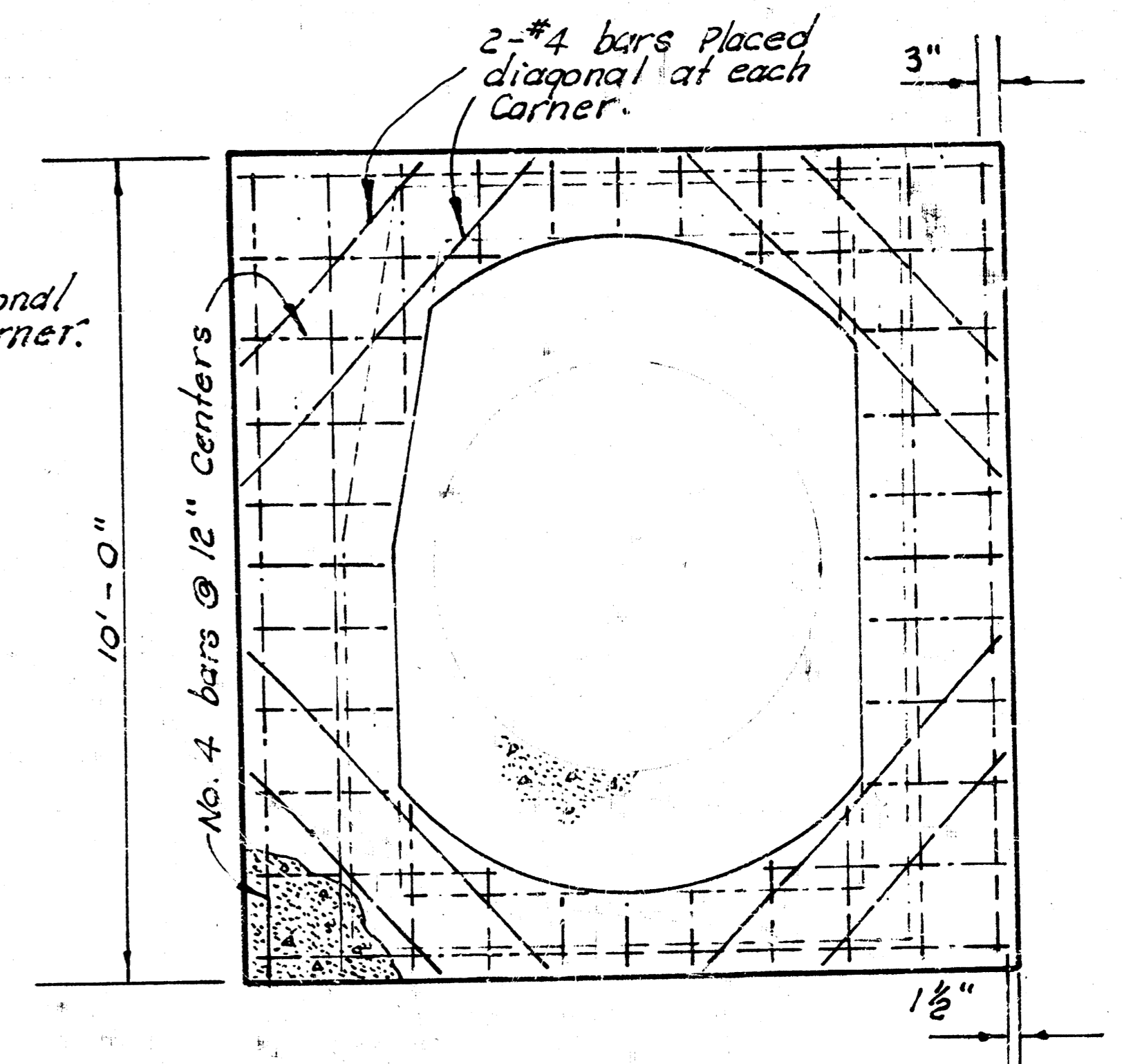
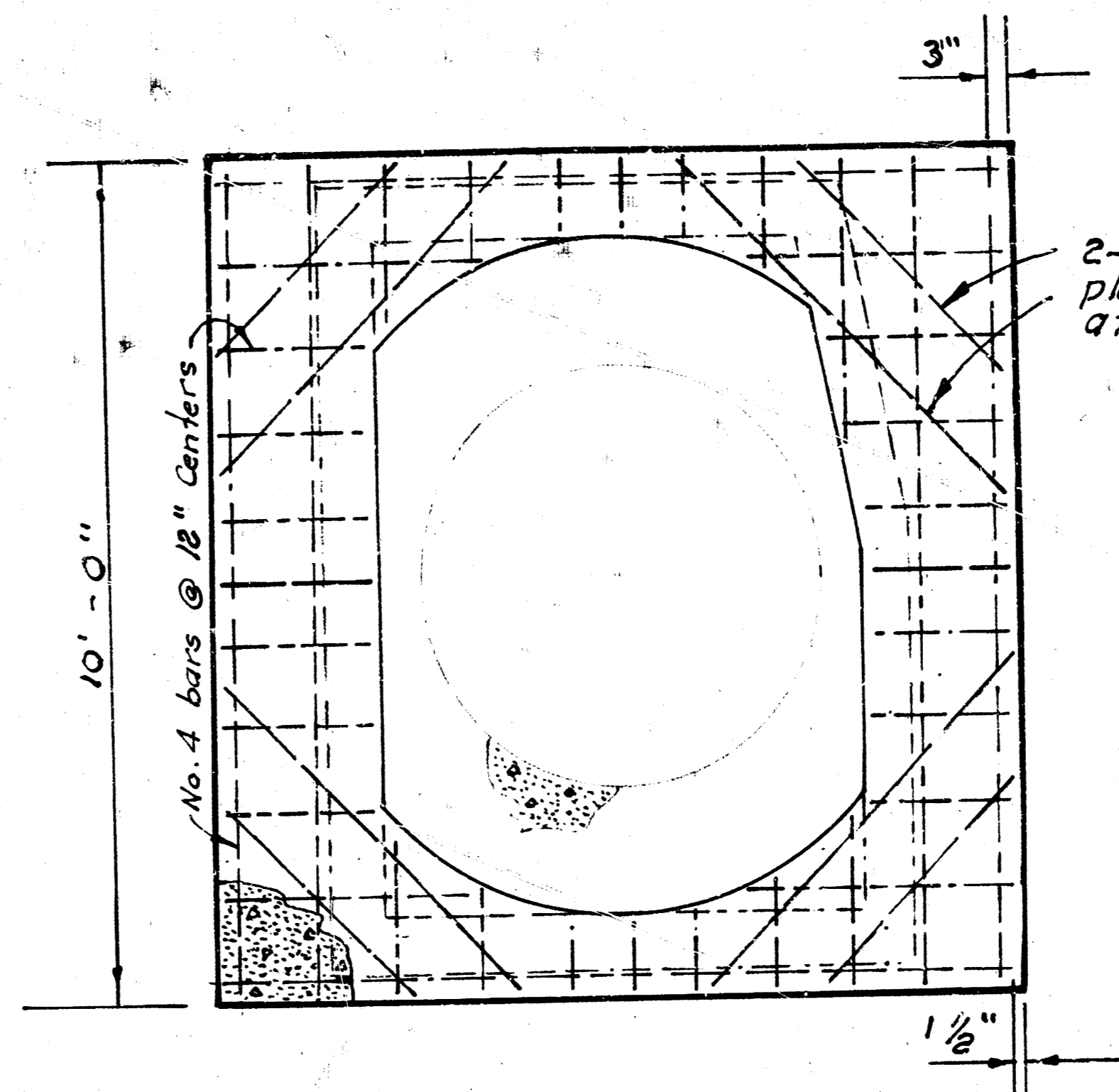
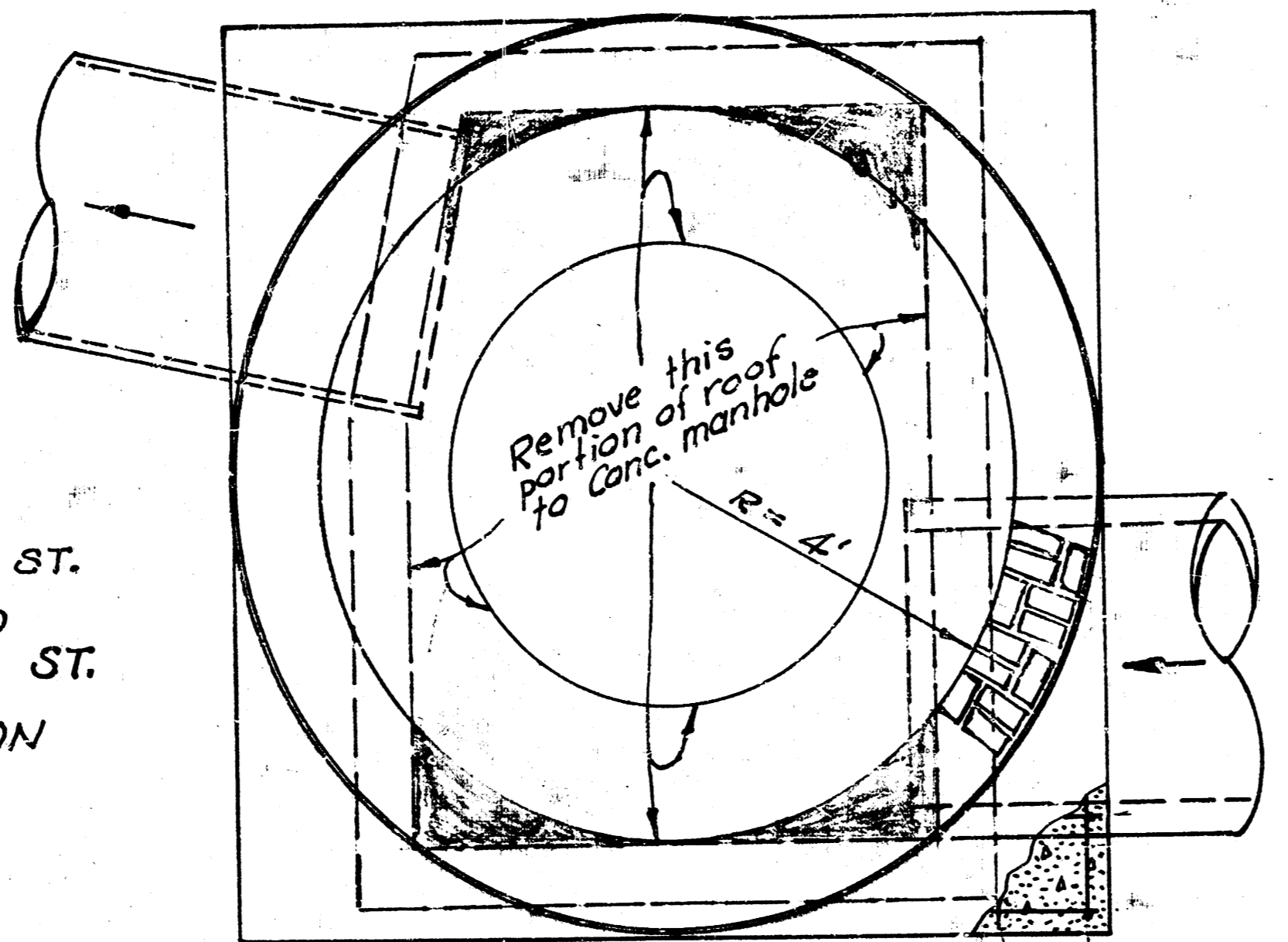
ALTERATION, REPAIR, RECONSTRUCTION OR
 CONSTRUCTION OF A SUPPLEMENTAL SEWER TO
 SAN. SEWER NO. 20
 PROJECT NO. DBK 4 574069

FILMED FROM THE BEST
 AVAILABLE COPY....

Scale $\frac{1}{2}'' = 1'$



FIRST ST.
AND
SECOND ST.
SIPHON



NOTE: CONTRACTOR TO USE EXISTING MANHOLE RINGS AND COVERS FOR SIPHON MANHOLE RECONSTRUCTION. CONTRACTOR TO REMOVE EXISTING BRICK STACKS ON SIPHON MANHOLES AND THAT PORTION OF THE TOP SLABS OF THE CONCRETE MANHOLES AS INDICATED BY PLANS. TOP SLABS OF CONCRETE MANHOLES AND BRICK STACKS ON SIPHON MANHOLES TO BE RECONSTRUCTED AS SHOWN BY PLANS. PRICE BID FOR RECONSTRUCTION OF SIPHON MANHOLES SHALL INCLUDE ALL COST FOR REMOVAL OF TOP SLAB AND BRICK STACK, RECONSTRUCTION OF TOP SLAB AND BRICK STACK, EXCAVATION, SAND BACKFILL AND/OR FLUSHING, AND ANY OTHER INCIDENTALS NECESSARY TO COMPLETE THE WORK.

ALTERATION REPAIR, RECONSTRUCTION OR CONSTRUCTION OF A SUPPLEMENTAL SEWER TO SAN. SEWER NO. 20 PROJECT NO. DBK L 574069

FILMED FROM THE BEST AVAILABLE COPY