

ALTERATION, REPAIR, RECONSTRUCTION OR
CONSTRUCTION OF A SUPPLEMENTAL SEWER TO
SANITARY SEWER NO. 20

ALONG THE WEST BANK OF THE WICHITA DRAINAGE CANAL

FIRST ST. TO 12TH ST.

CITY OF WICHITA, KANSAS

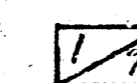
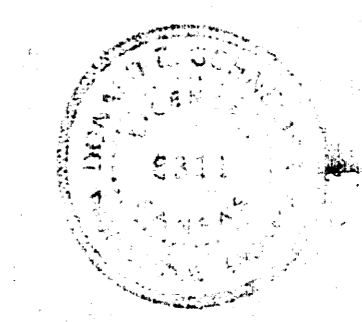
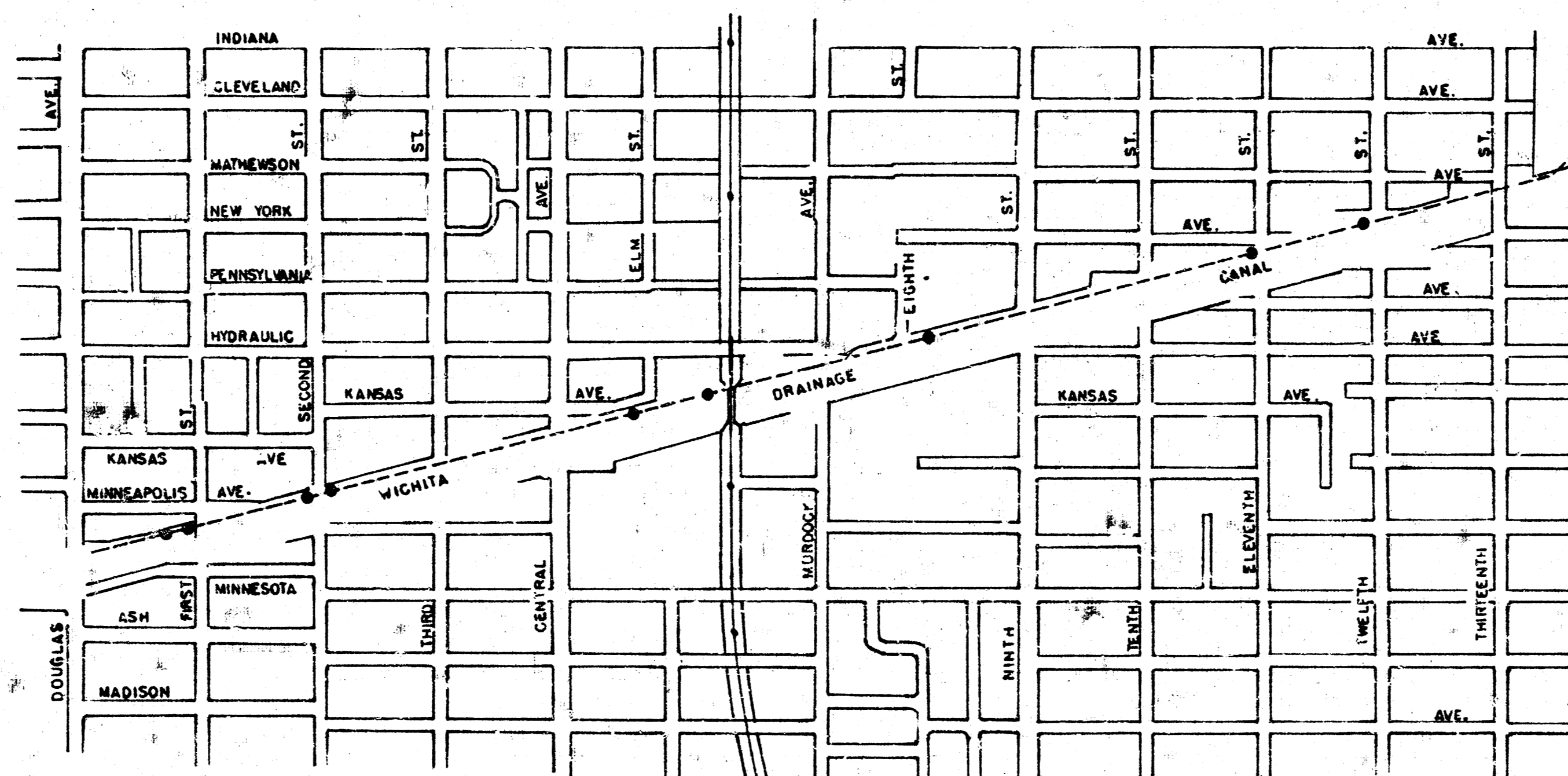
R. W. LINN — CITY ENGINEER

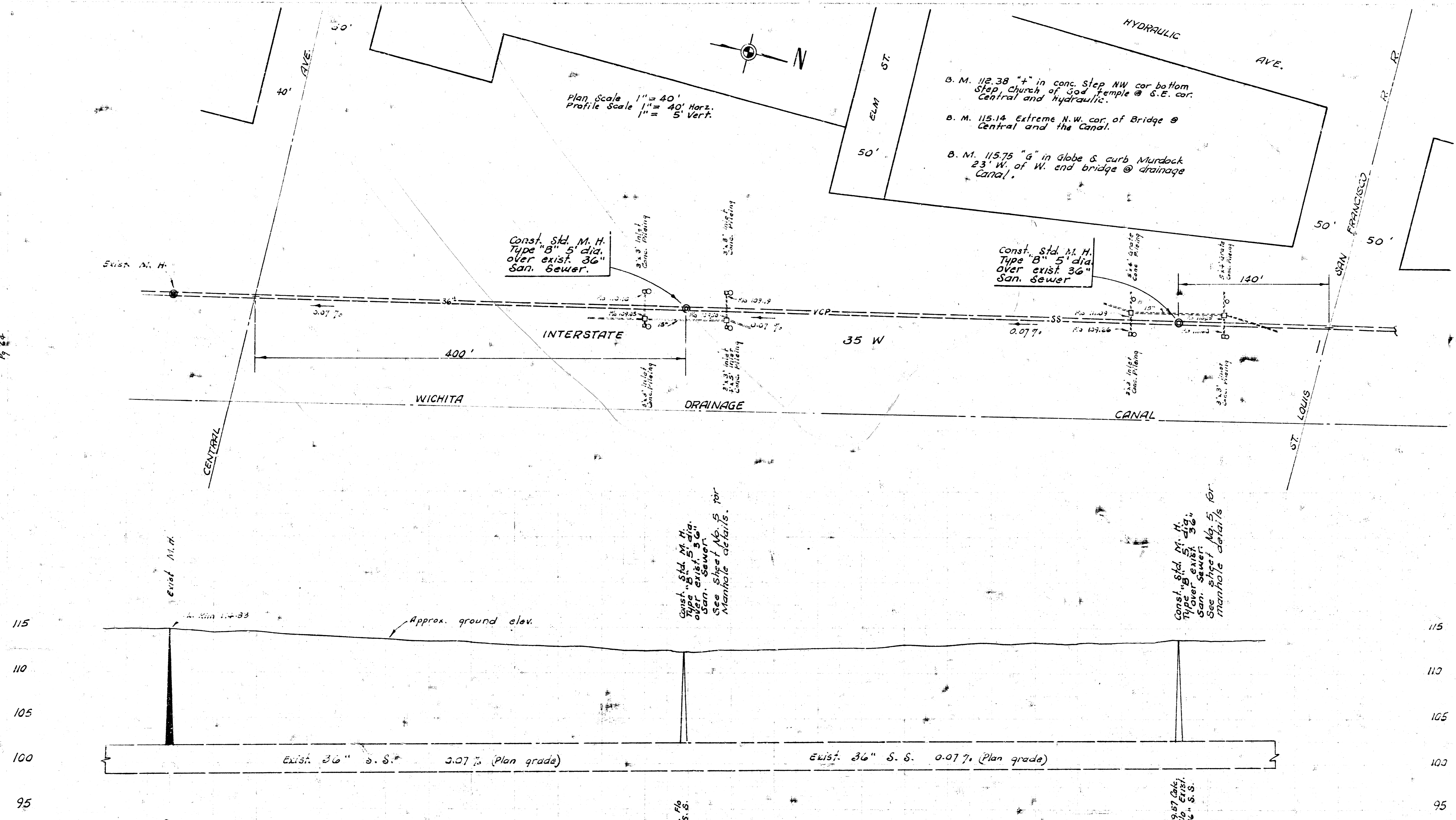
APR. 1974, PROJECT NO. DBKL 57 40 69



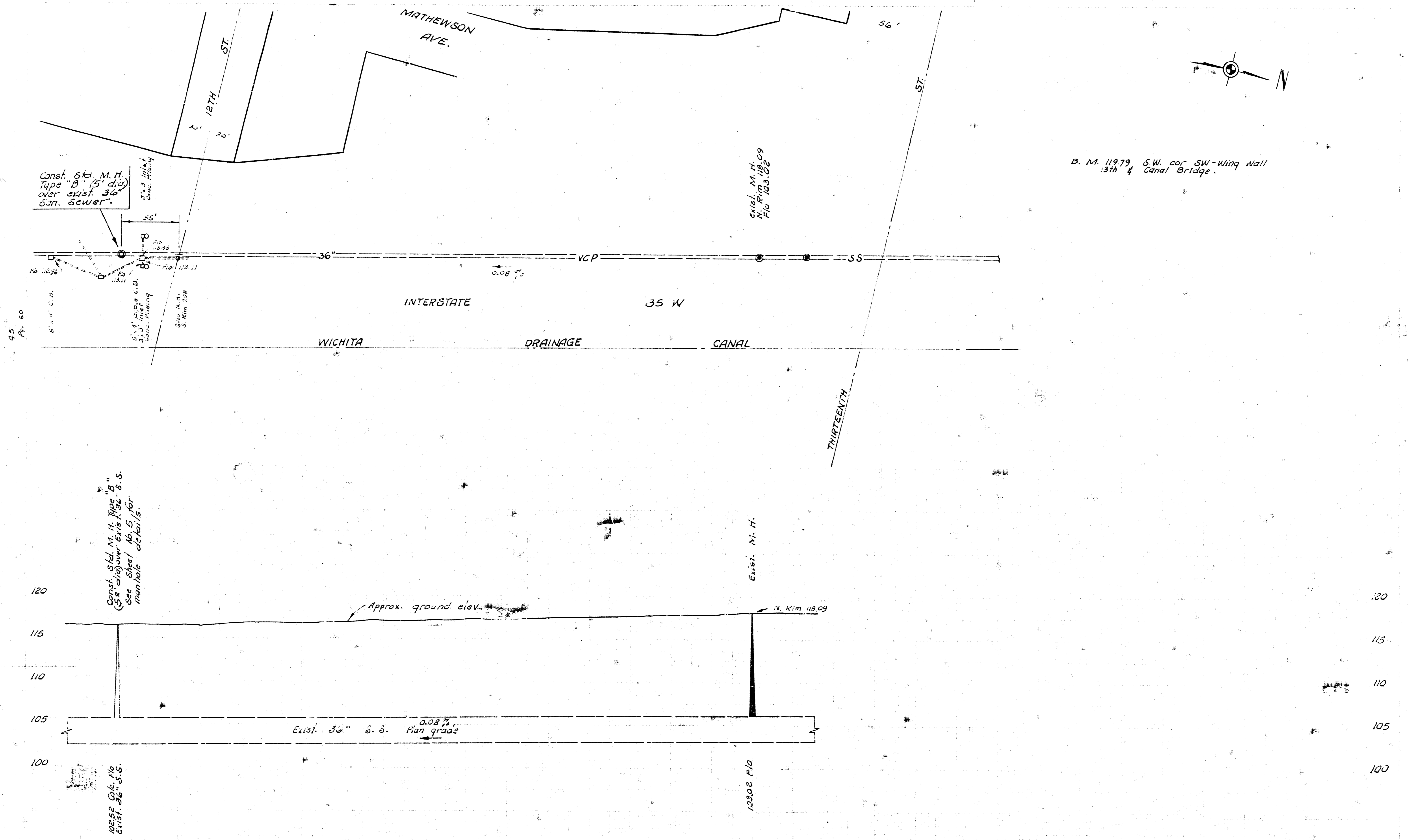
GENERAL NOTE

SAND FILL AND/OR FINISHING WILL NOT BE PAID FOR SEPARATELY AND THE COST FOR THIS WORK SHALL BE INCLUDED IN THE PRICE BID FOR MANHOLE CONSTRUCTION OR RECONSTRUCTION. SIDEWALK SHALL BE REMOVED AND REPLACED TO THE NEAREST JOINT WHERE NECESSARY. THE 36" SANITARY SEWER ON WHICH MANHOLES ARE TO BE CONNECTED OR RECONSTRUCTED SHALL BE UNDER PRESSURE. CERTAIN TIMES OF THE DAY AND THE CONTRACTOR MUST USE CAUTION WHEN COMPLETING THE WORK UNDER THIS CONTRACT.





ALTERATION, REPAIR, RECONSTRUCTION OR CONSTRUCTION OF A SUPPLEMENTAL SEWER TO
SANITARY SEWER NO. 20
 ALONG THE WEST BANK OF THE WICHITA DRAINAGE CANAL
 FIRST ST. TO 12TH ST.
 CITY OF WICHITA, KANSAS
 R. W. LINN - CITY ENGINEER
 1974 PROJECT NO. DBKLS74069



Const. Std. M. H. Pipe "B" (5' dia) over exist. 30" San. Sewer.

Exist. M. H. N. Rim 118.09 Fio 103.02

B.M. 119.79 S.W. cor SW-Wing Wall 13th & Canal Bridge.

Const. Std. M. H. Pipe "B" (5' dia) over exist. 30" S.S. See Sheet No. 5 for manhole details.

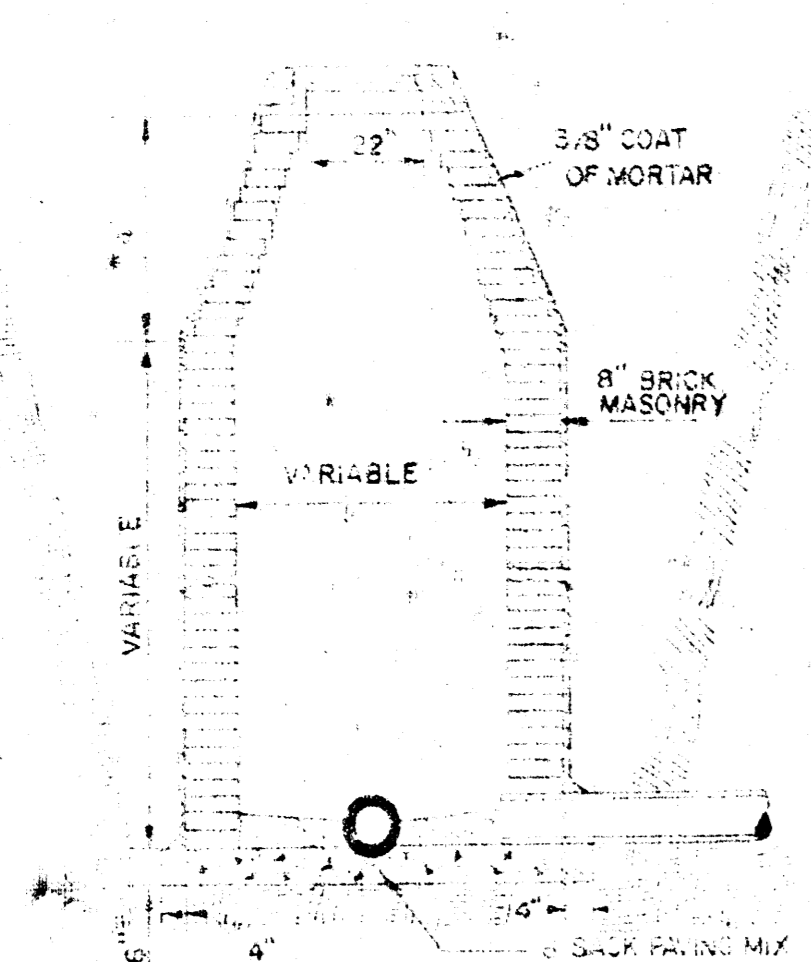
102.88 G.I. Fio Exist. 30" S.S.

Exist. M. H.

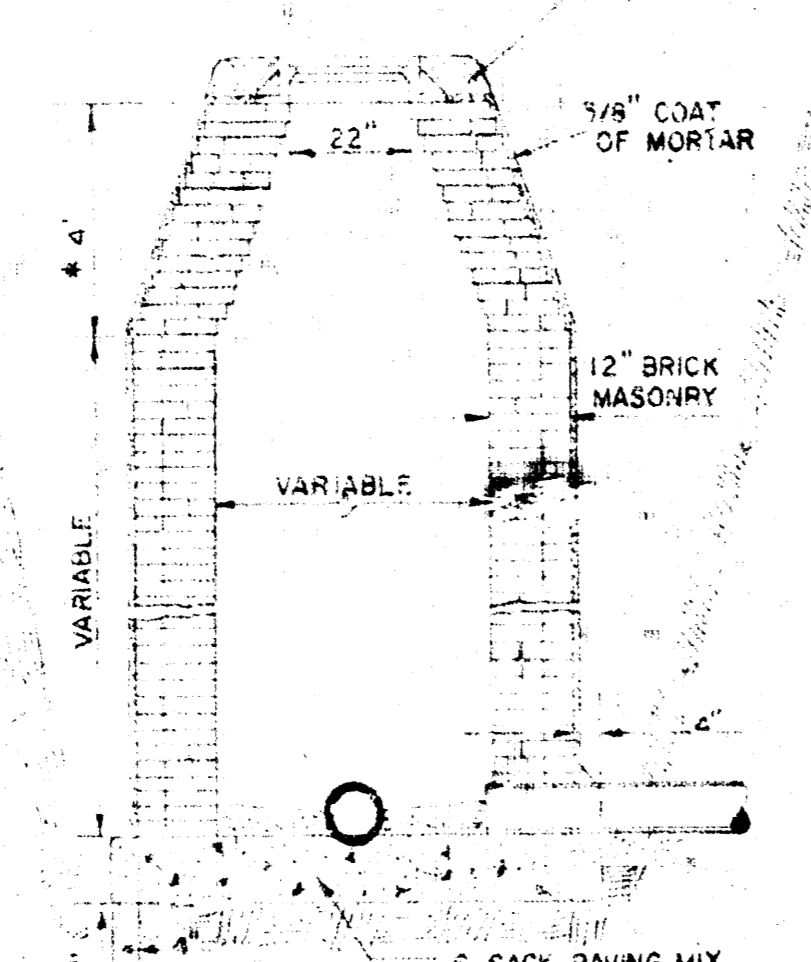
103.02 F.I.D.

ALTERATION, REPAIR, RECONSTRUCTION OR CONSTRUCTION OF A SUPPLEMENTAL SEWER TO SAN. SEWER NO. 20 PROJECT NO. DBKL574069

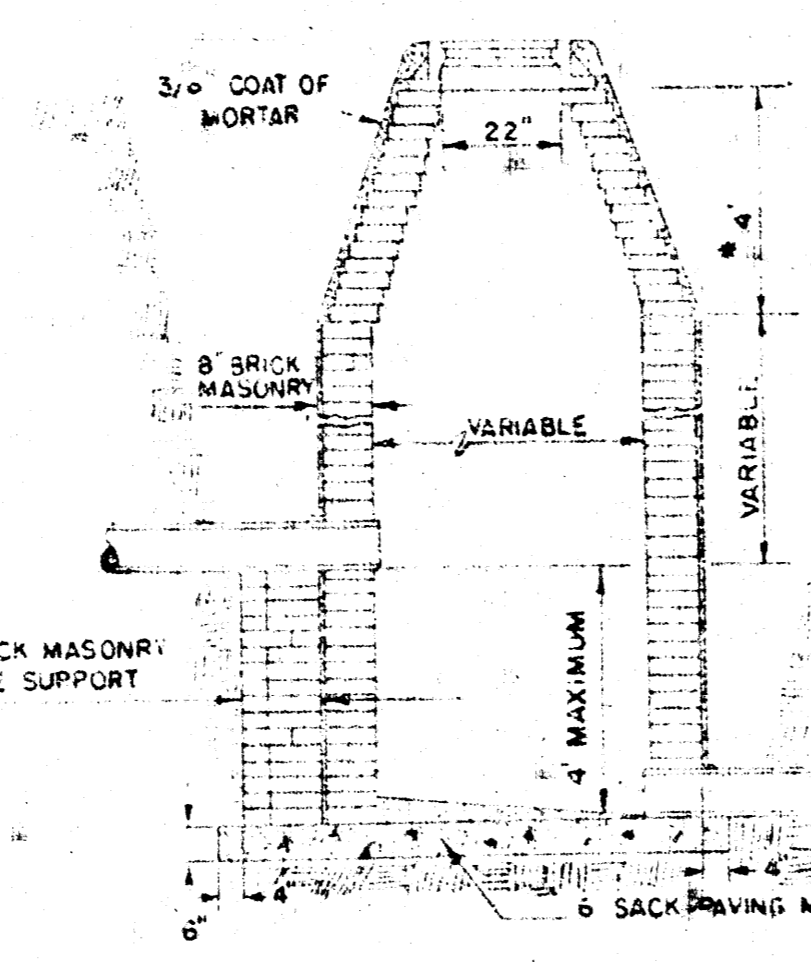
GRUIT TO BE PLACED AROUND MANHOLE RING ONLY WHEN MANHOLE IS CONSTRUCTED IN UNPAVED AREAS. (TYPICAL ALL MANHOLES)



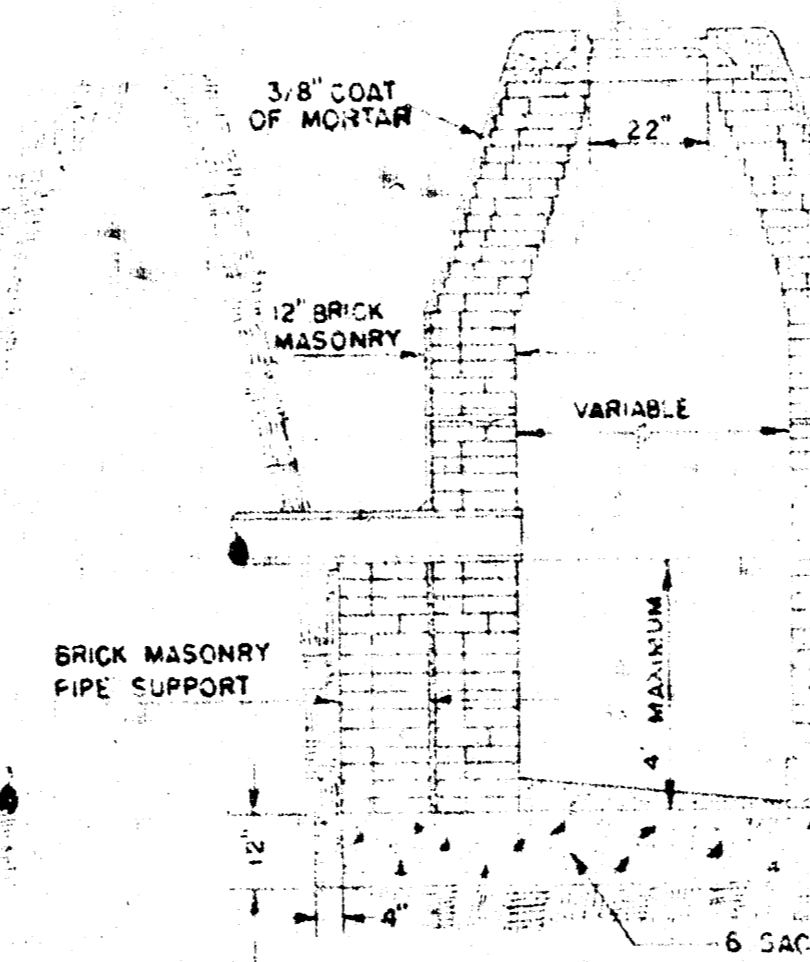
STANDARD MANHOLE TYPE "A"



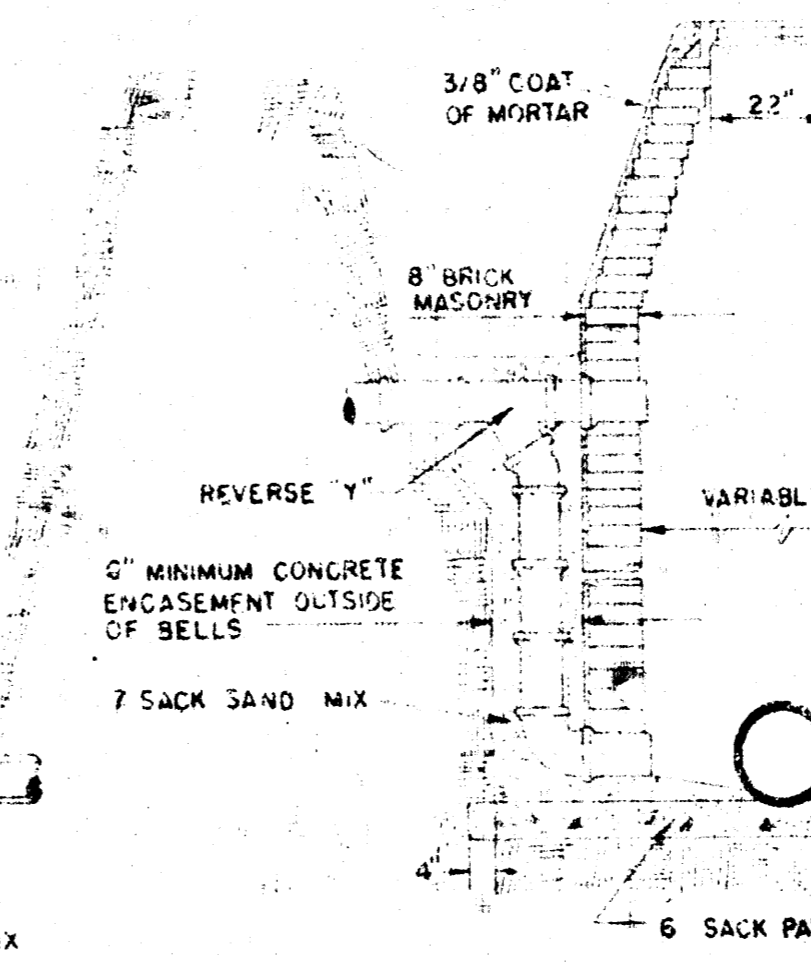
STANDARD MANHOLE TYPE "B"



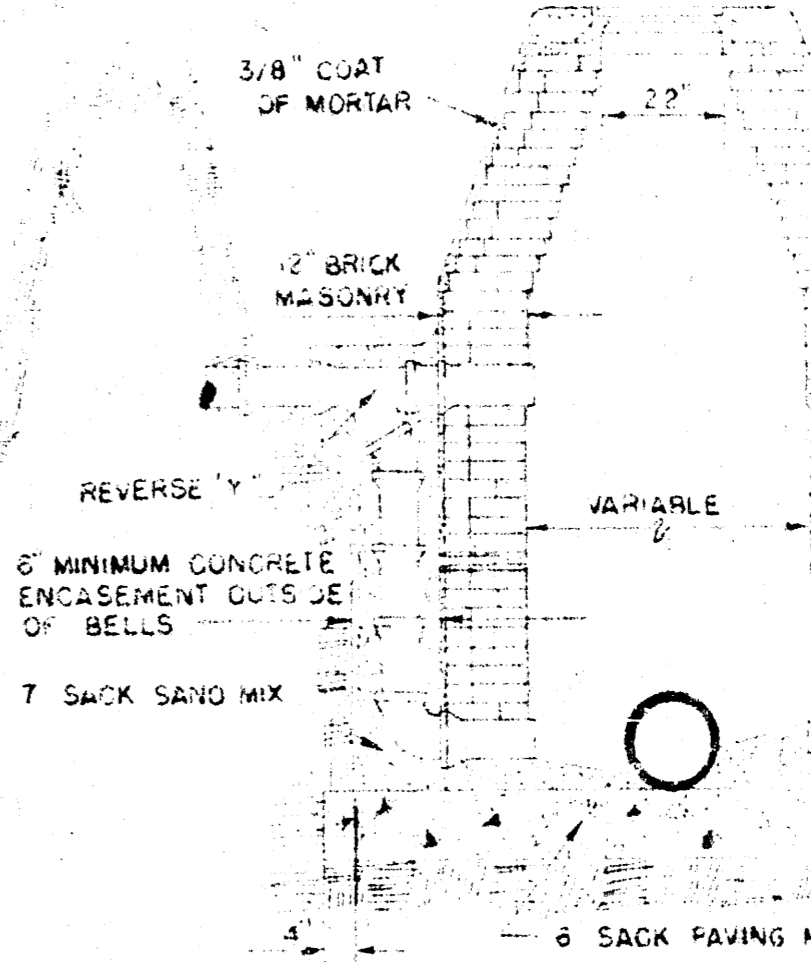
DROP MANHOLE TYPE "A"



DROP MANHOLE TYPE "B"

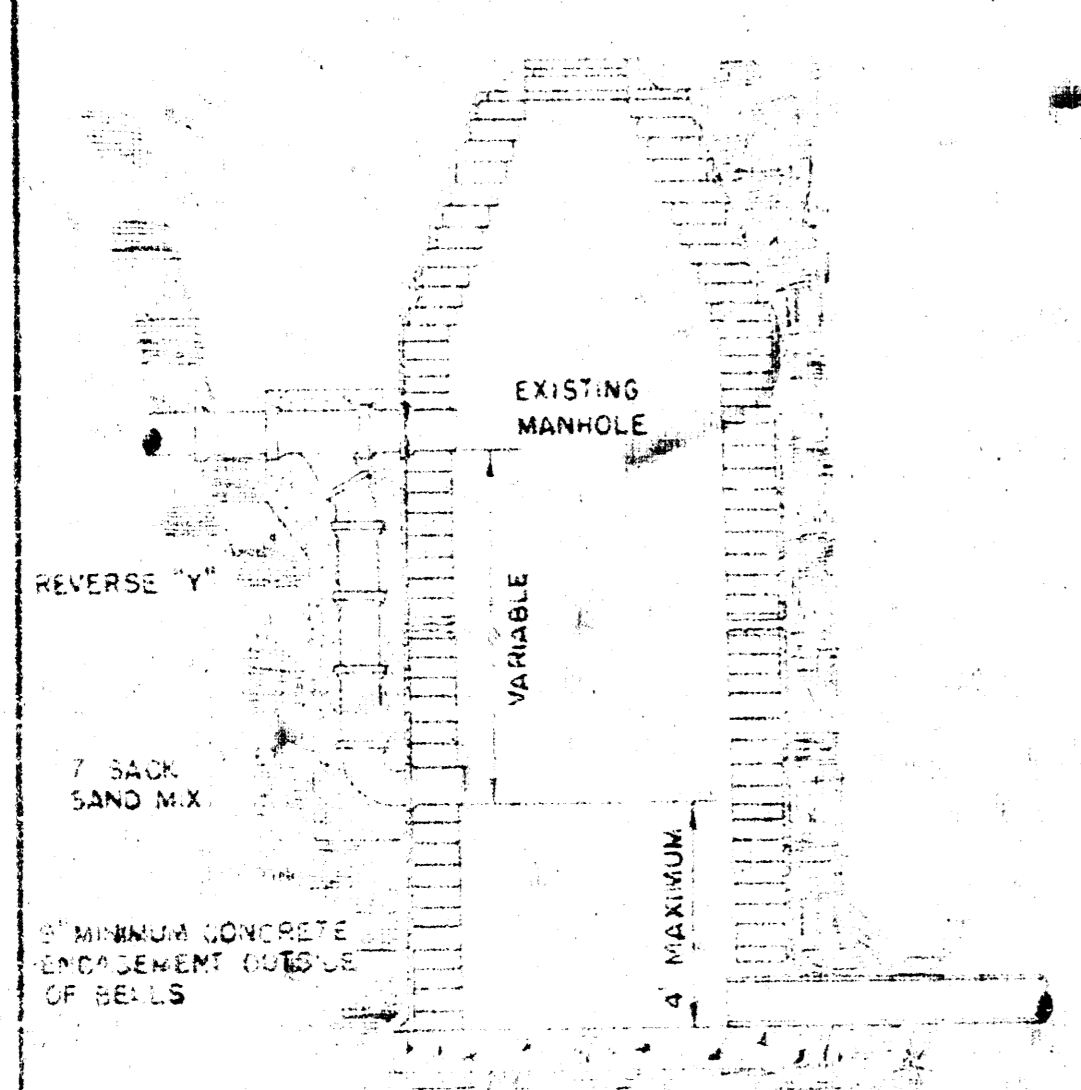


OUTSIDE DROP MANHOLE TYPE "A"



OUTSIDE DROP MANHOLE TYPE "B"

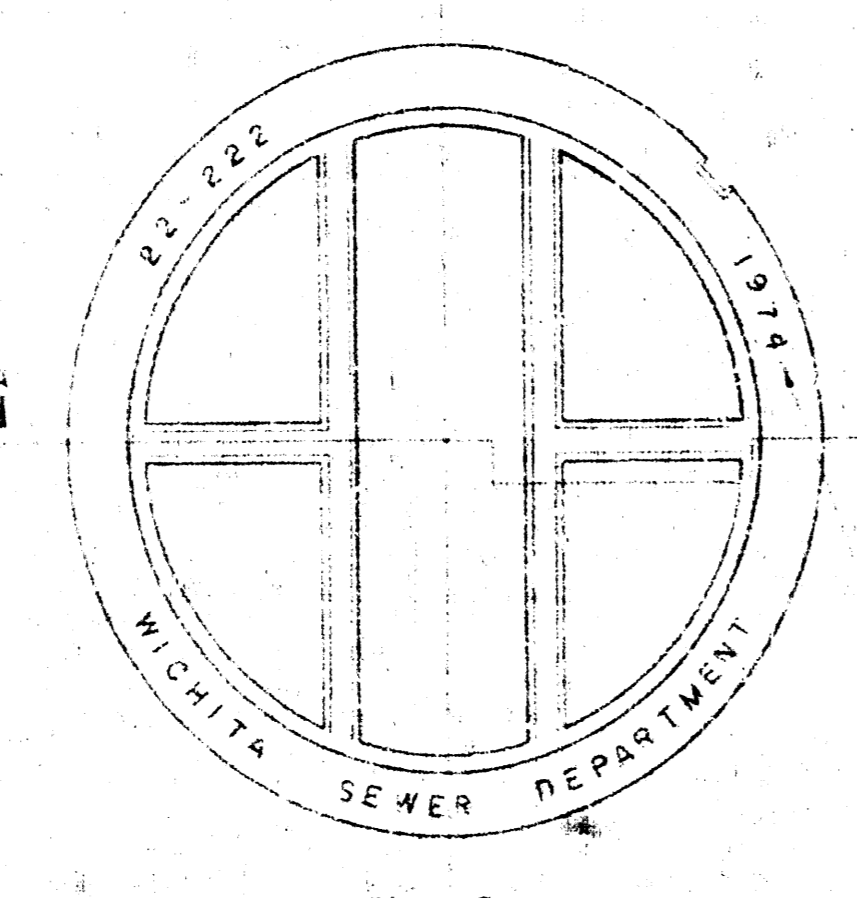
DRAW = 6' ON 5' DIA. M.H.



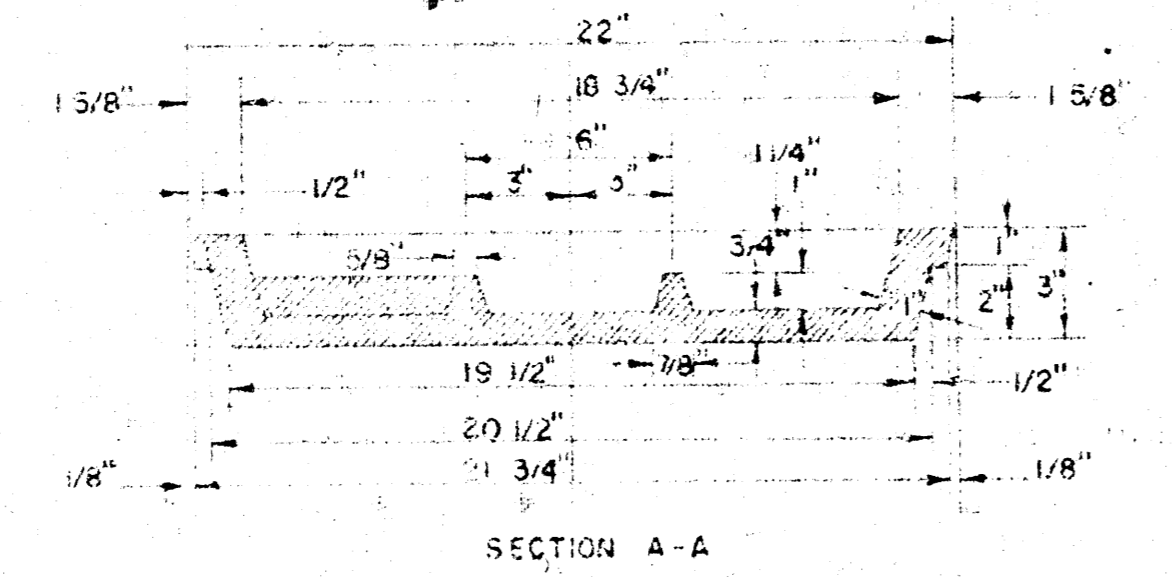
DETAIL OF DROP STACK FOR EXISTING MANHOLES IN GROUND WATER

GENERAL NOTES

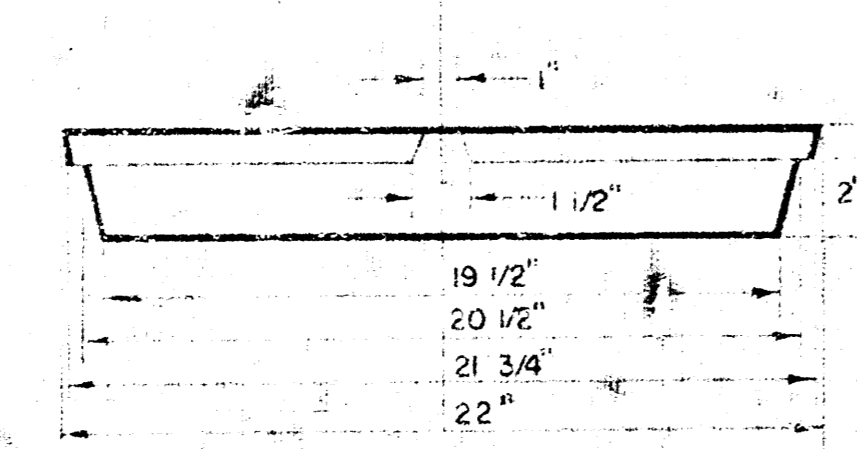
- 1. WHEN USED IN MASONRY CONSTRUCTION SHALL CONTAIN 8 SACKS OF CEMENT PER CUBIC YARD.
- 2. STANDARD MANHOLES TYPE "A" OR TYPE "B" AND STANDARD DROP MANHOLES TYPE "A" OR TYPE "B" SHALL BE BID AS STANDARD MANHOLES FOR THE TYPE AND DIAMETER INDICATED.
- 3. OUTSIDE DROP MANHOLES SHALL BE BID AS STANDARD OUTSIDE DROP MANHOLES FOR THE TYPE AND DIAMETER INDICATED. ALL MANHOLE DIAMETERS WILL BE 4' UNLESS INDICATED OTHERWISE.
- 4. MANHOLES WITH PIPE SIZES LARGER THAN 24" SHALL BE 5' DIAMETER.
- 5. ALL SIDES OF ALL MANHOLES SHALL BE SHAPED TO IMPROVE HYDRAULIC EFFICIENCY USING 8 SACK SAND MIX CONCRETE.



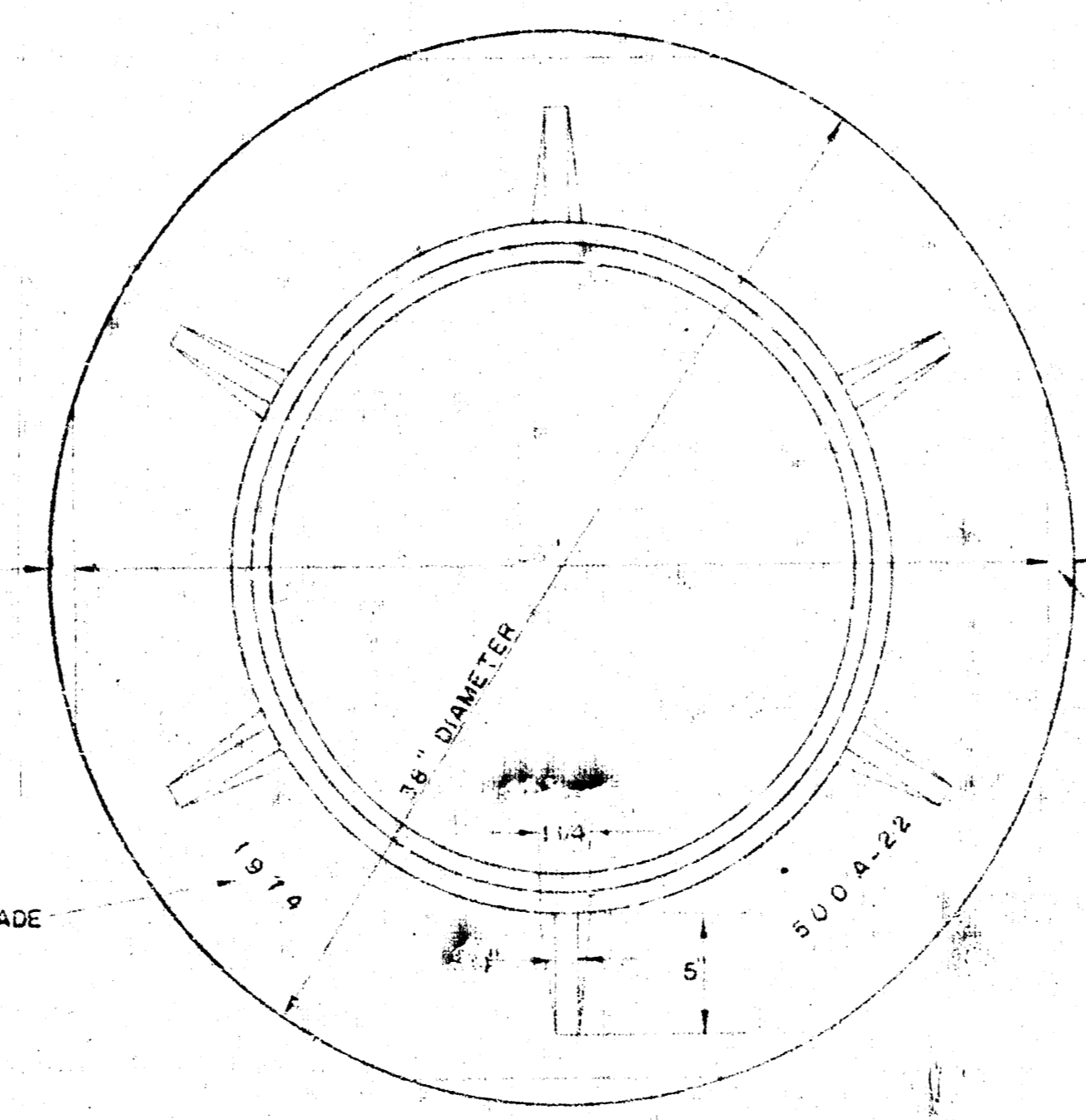
MANHOLE COVER WEIGHT 10 LBS



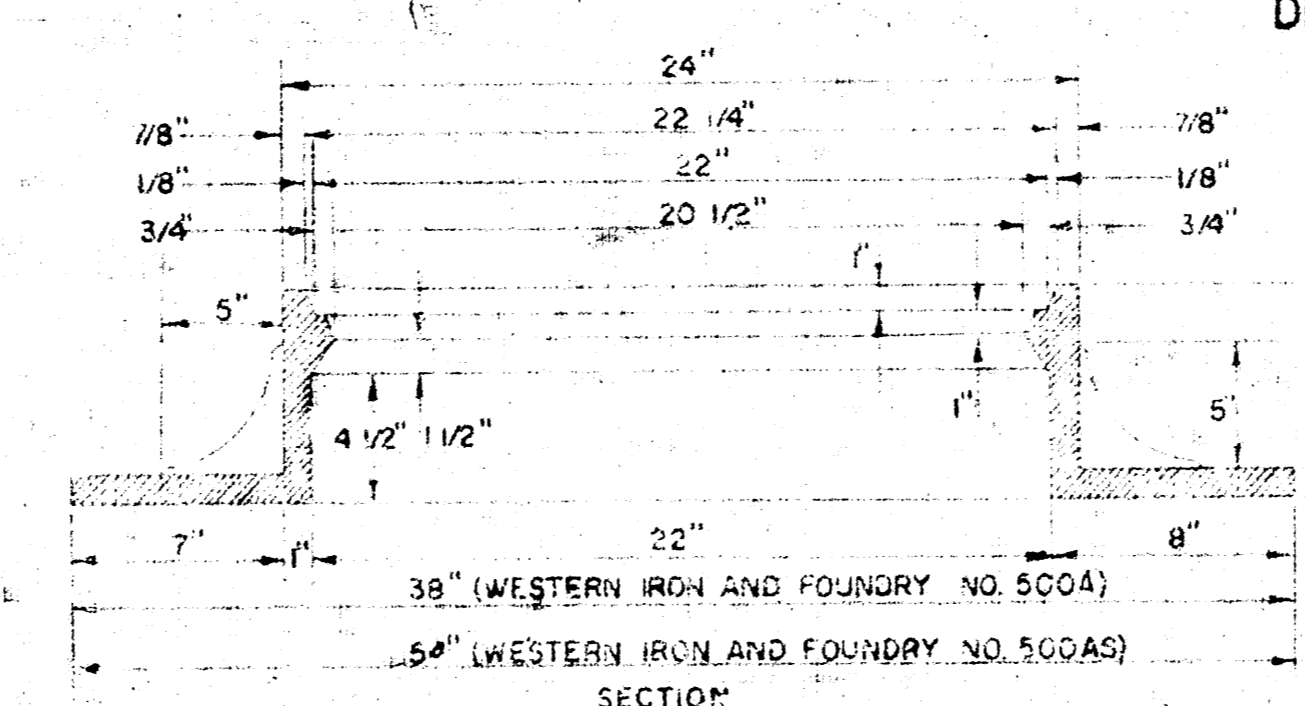
MANHOLE COVER



MANHOLE COVER

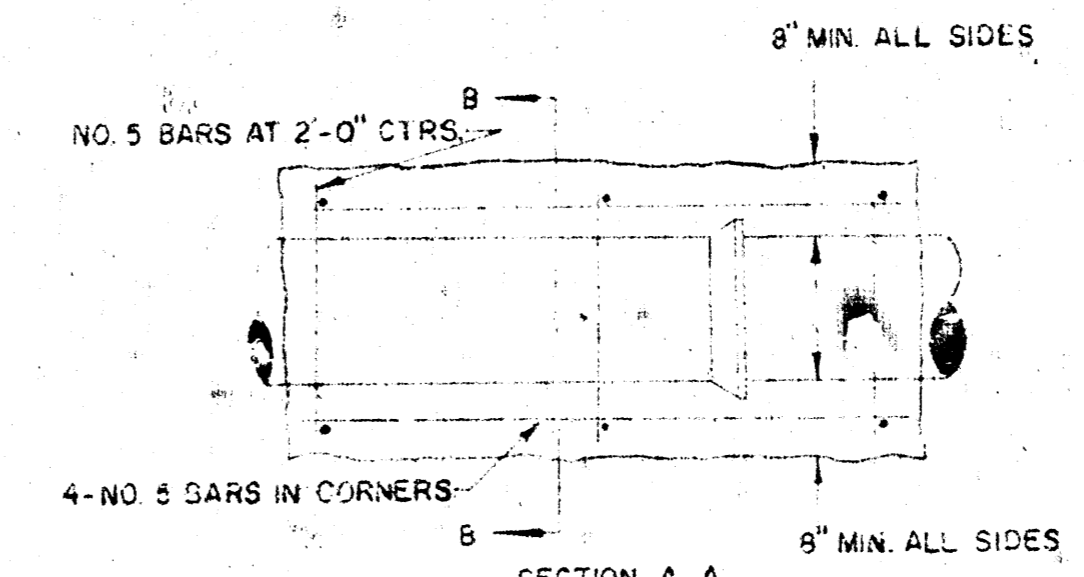


MANHOLE RING WEIGHT 325 LBS. RING NO. 500A WEIGHT 800 LBS. RING NO. 500AS

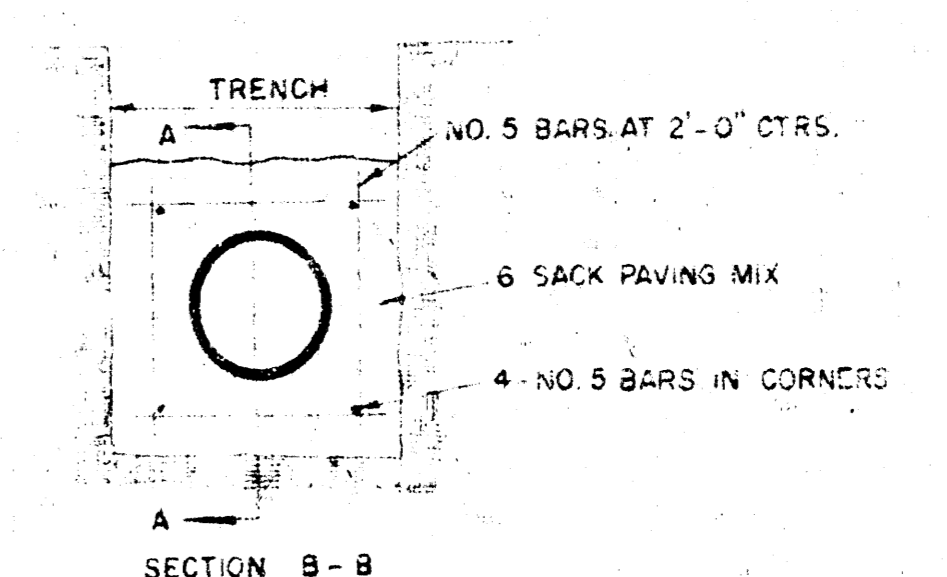


MANHOLE RING

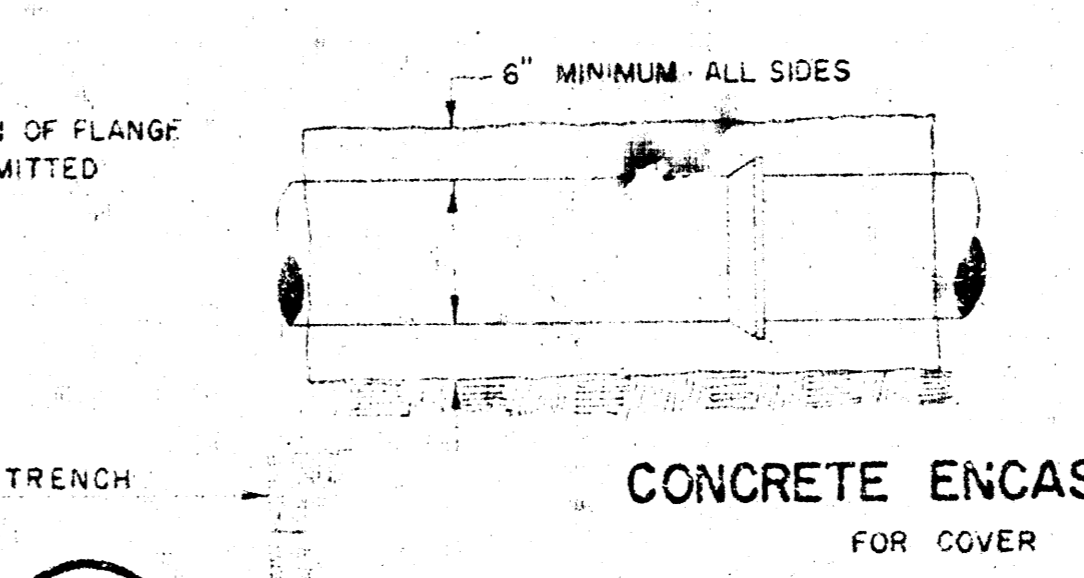
OUTSIDE CIRCUMFERENCE OF COVER AND THE INNER FACE AND SEAT OF RING TO BE MACHINE FIT.



REINFORCED CONCRETE ENCASEMENT FOR STRENGTH



REINFORCED CONCRETE ENCASEMENT FOR COVER



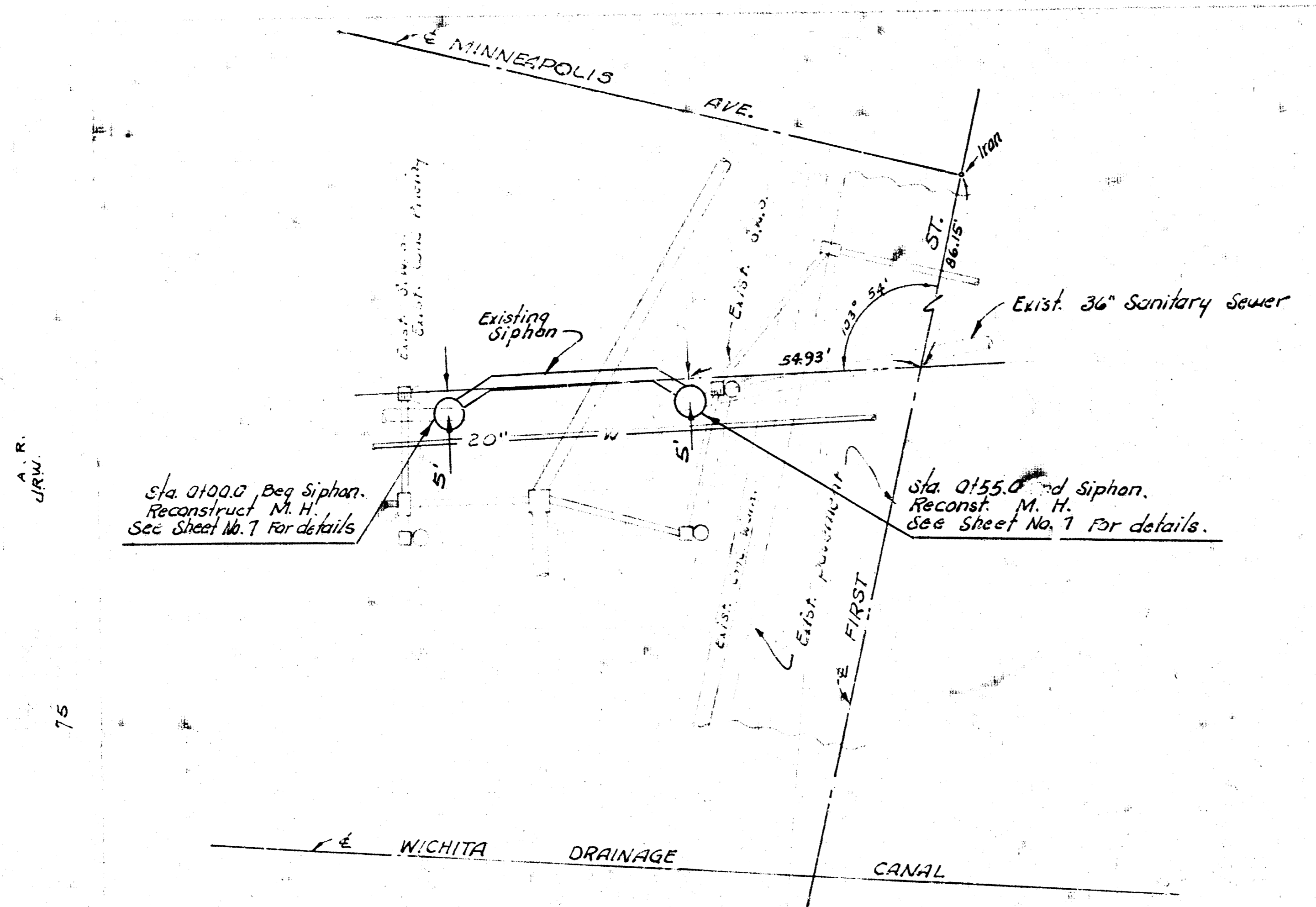
CONCRETE ENCASEMENT FOR COVER

DETAIL OF CONCRETE CRADLE

ORDINARY BEDDING METHOD FOR CLAY PIPE

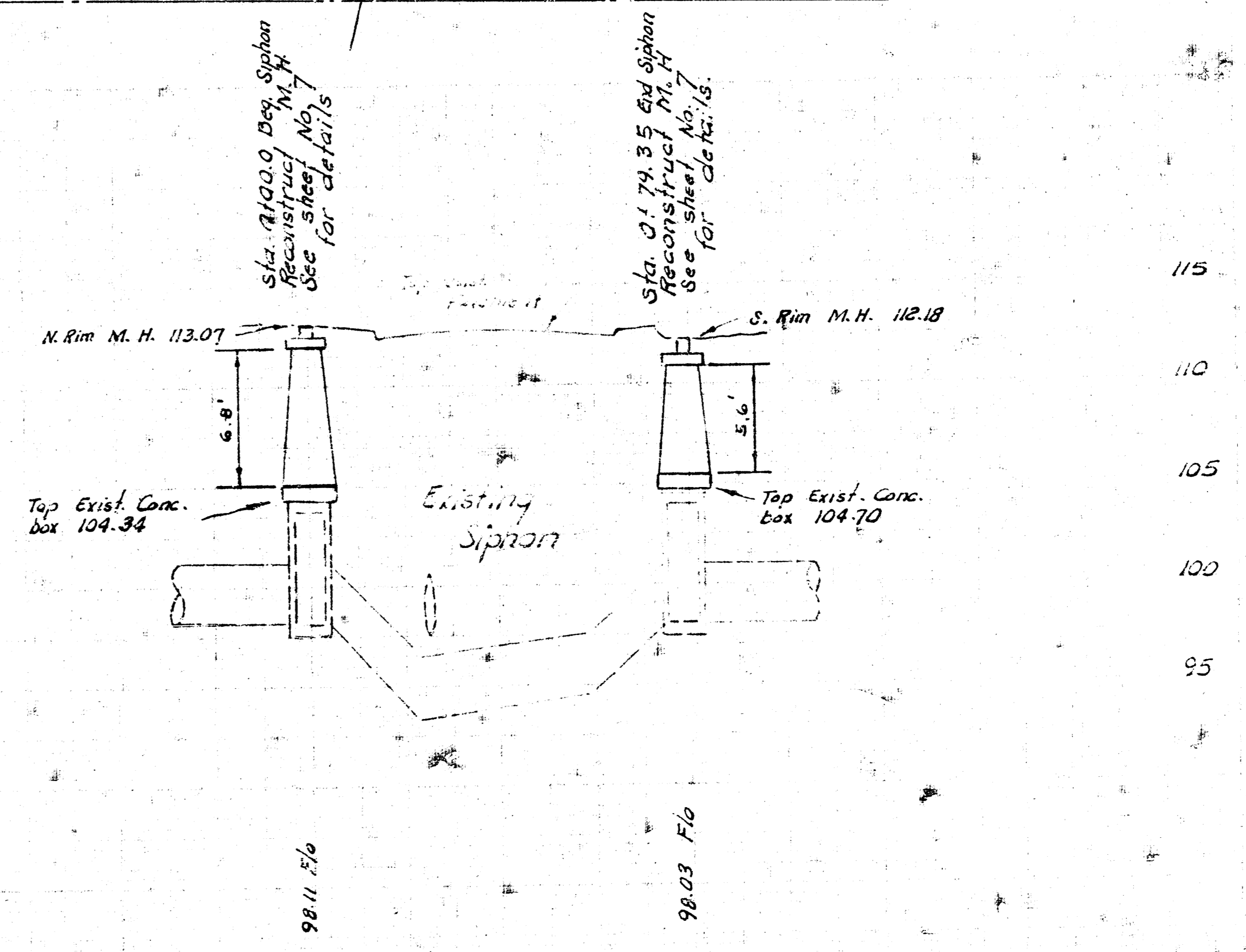
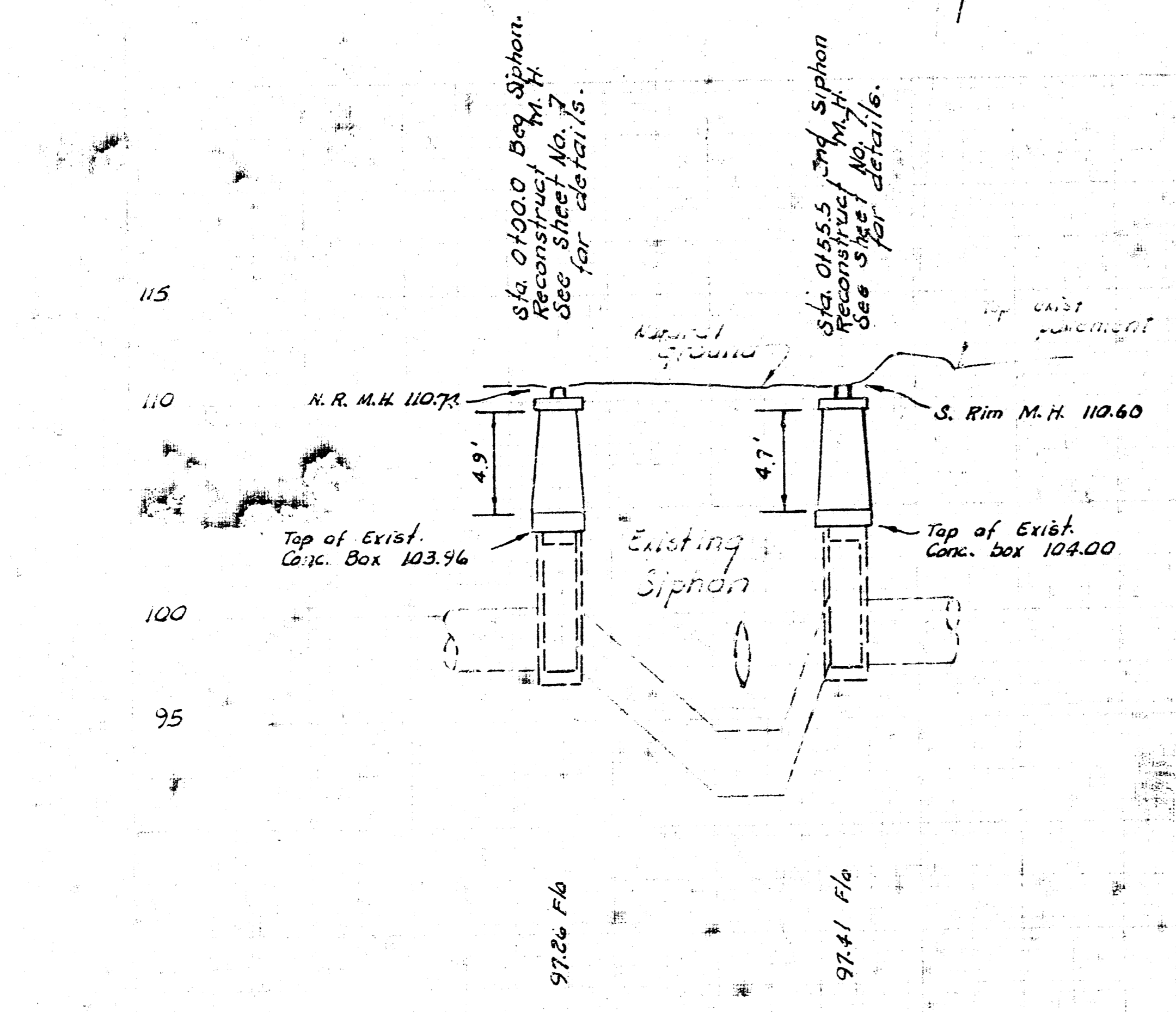
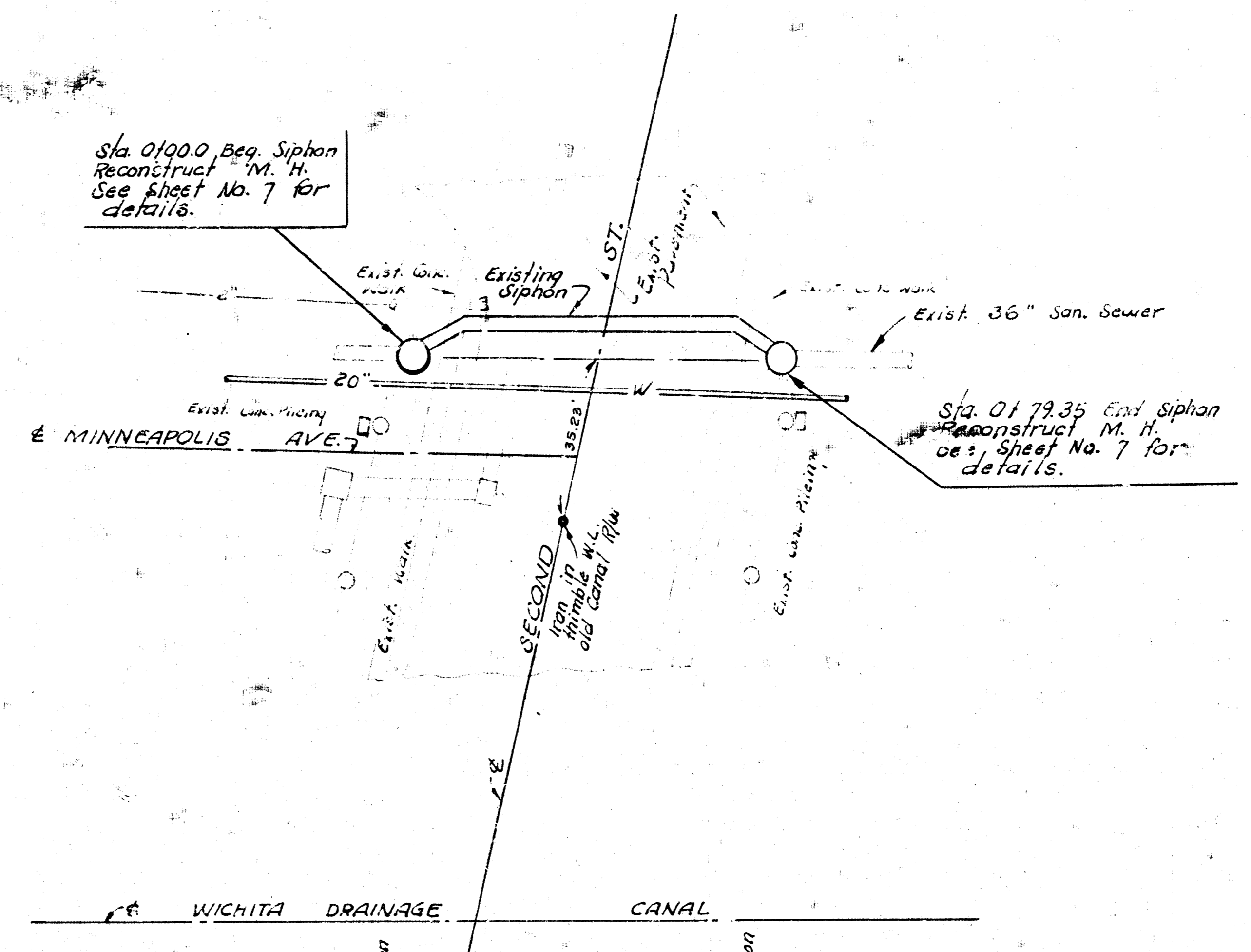
ORDINARY BEDDING METHOD FOR REINFORCED CONCRETE PIPE

DETAILS OF SEWER APPURTENANCES ADOPTED AS STANDARD DESIGN BY ENGINEERING DIVISION CITY OF WICHITA, KANSAS R. W. LINN CITY ENGINEER 1974

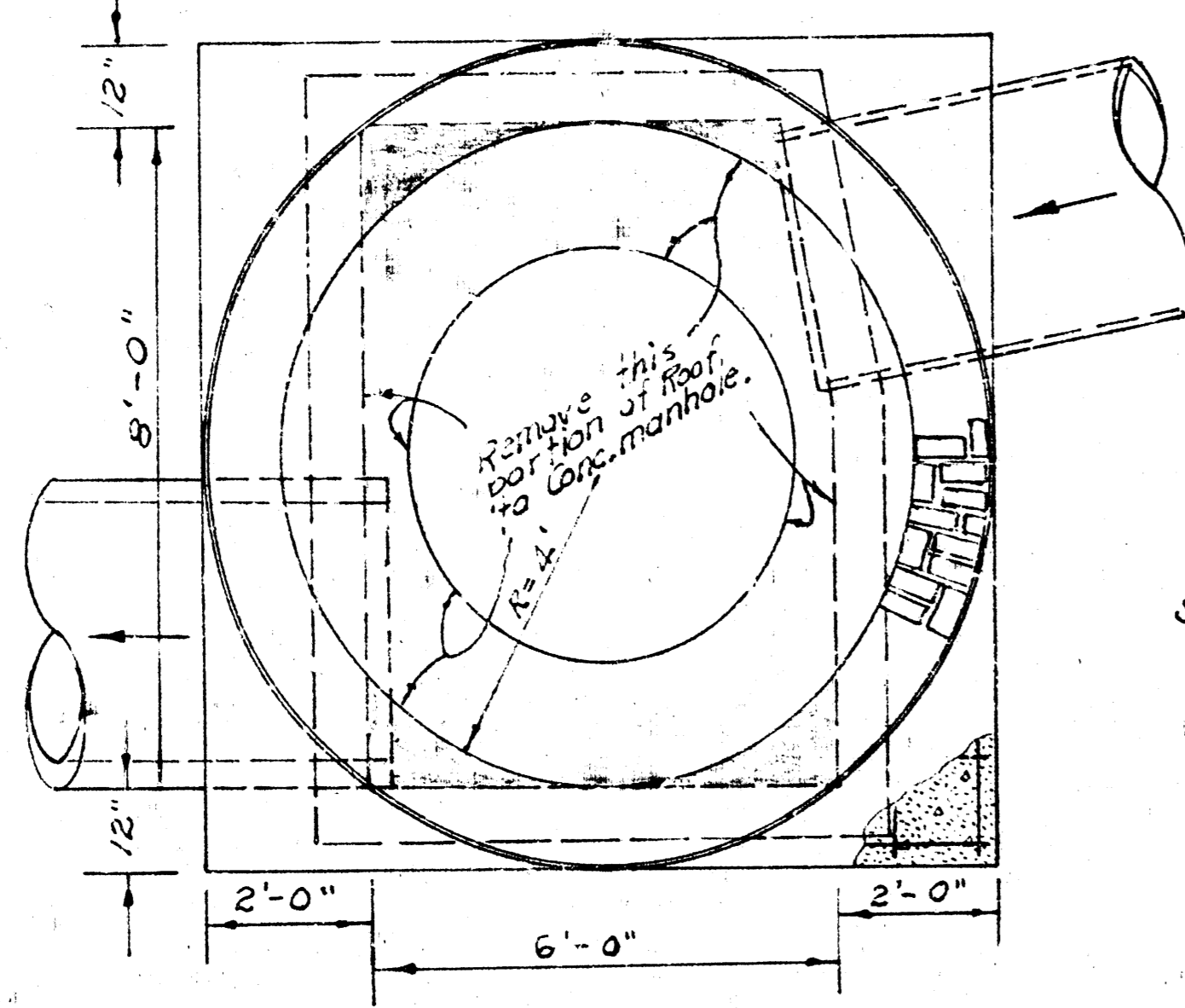
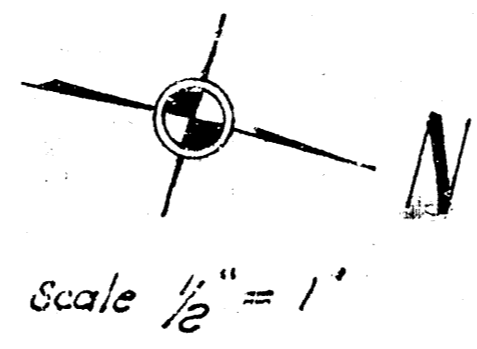


Plan Scale 1" = 20'
 Profile Scale 1" = 5' Vert.

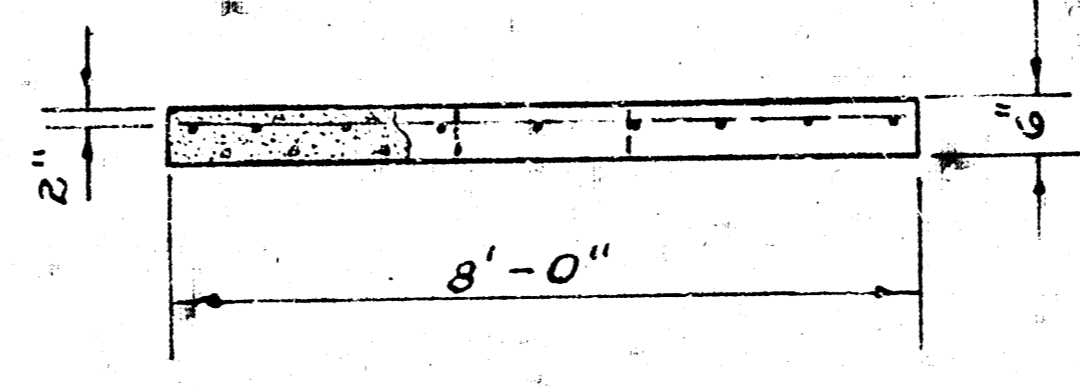
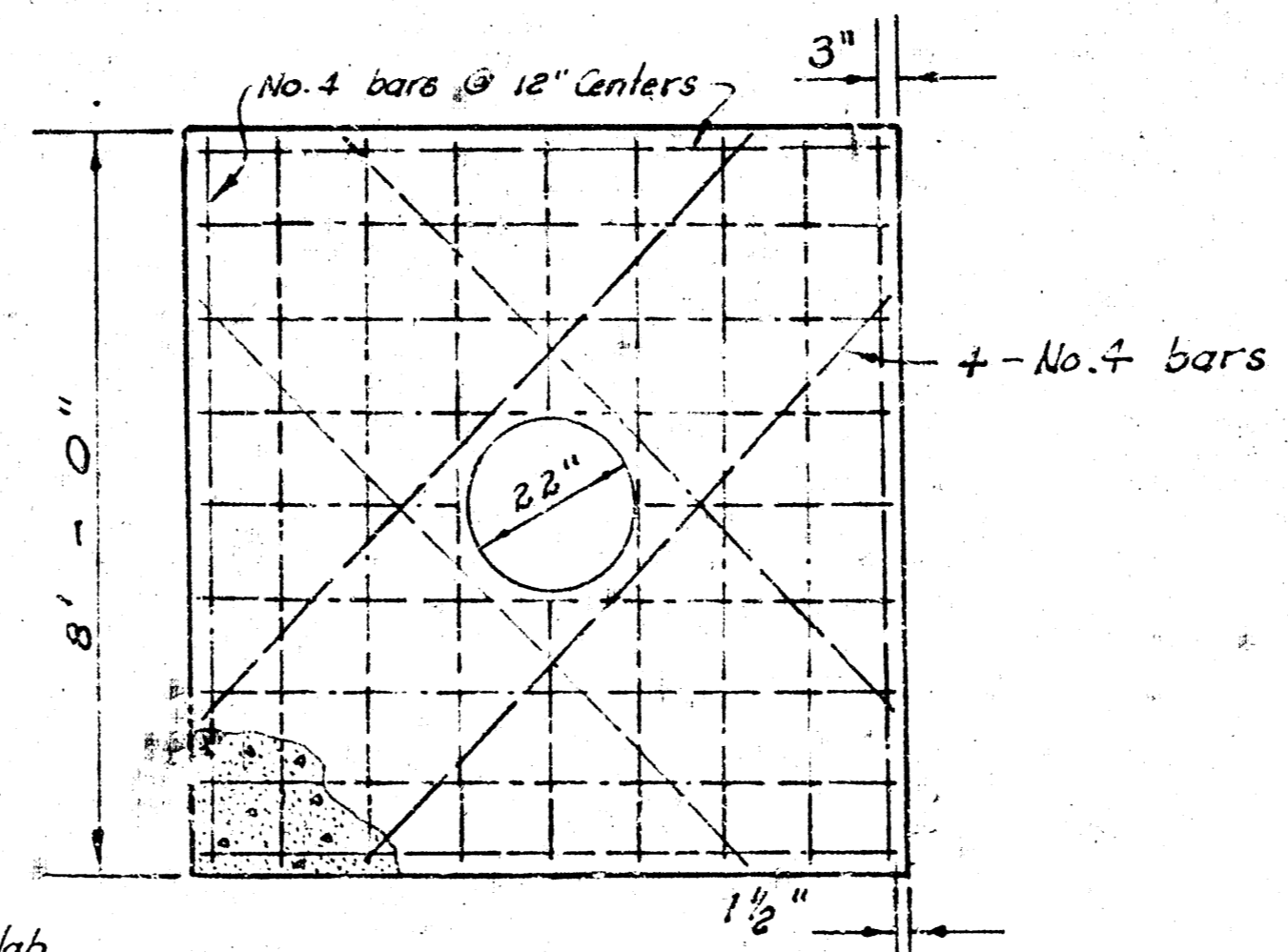
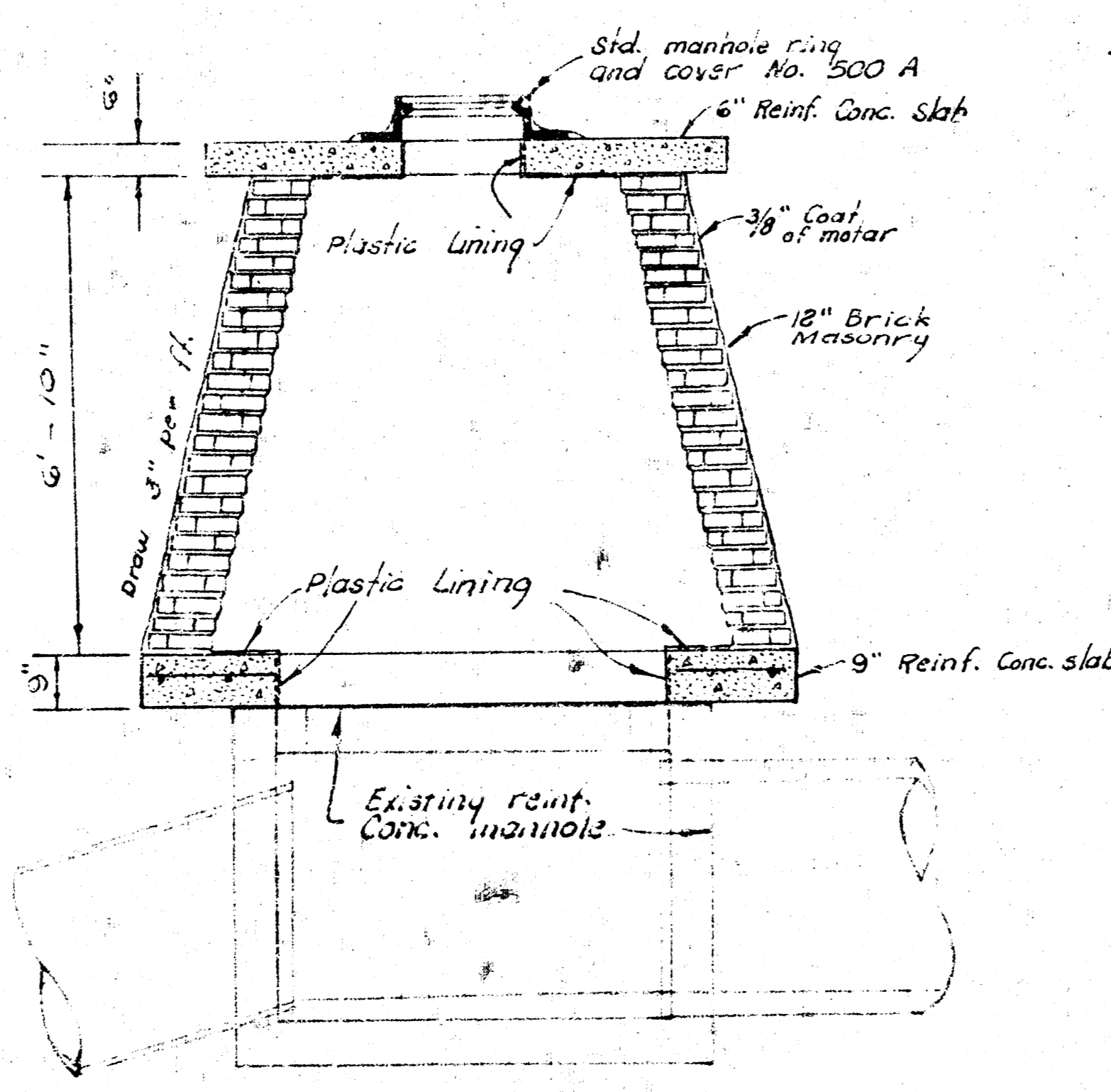
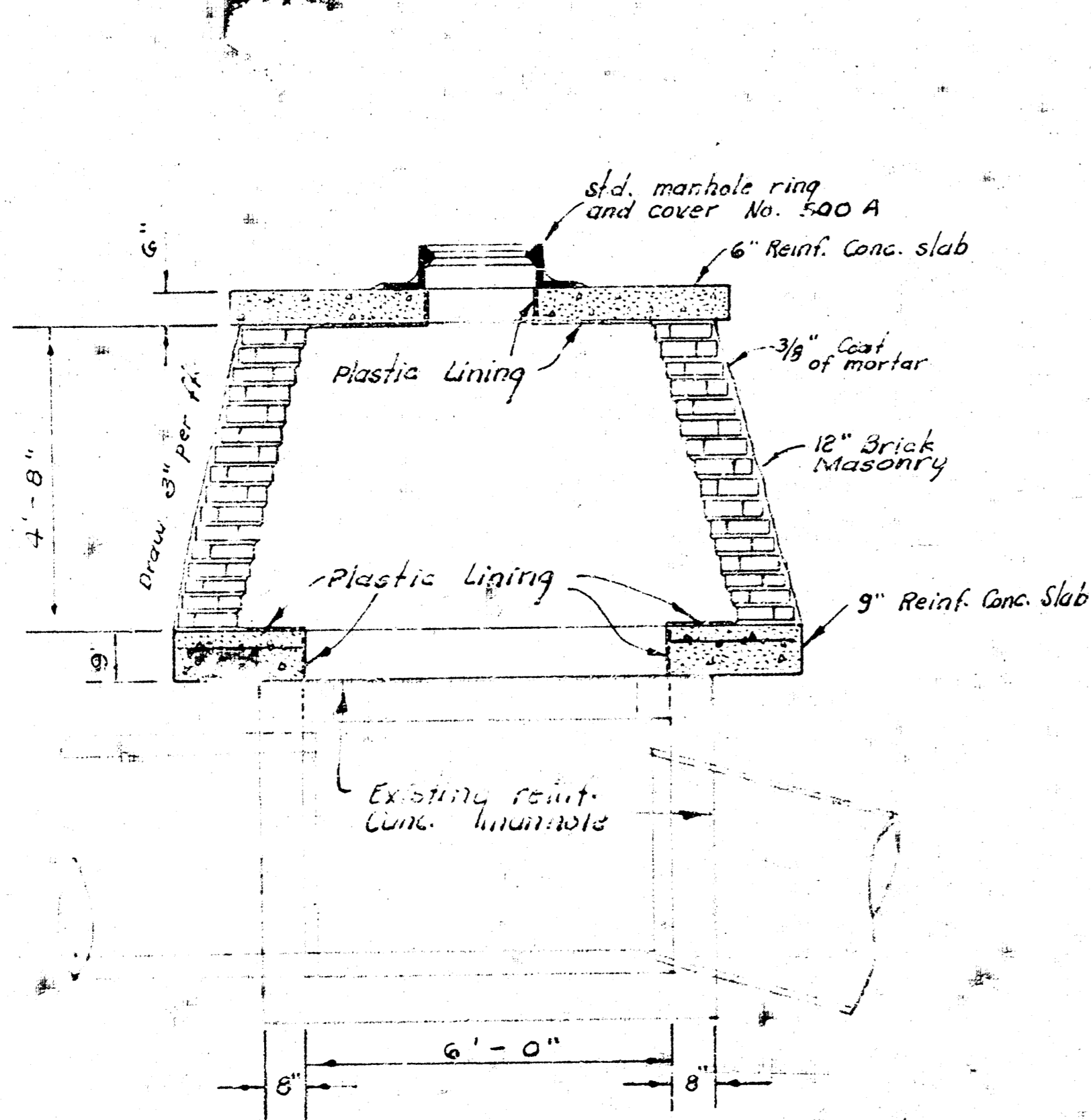
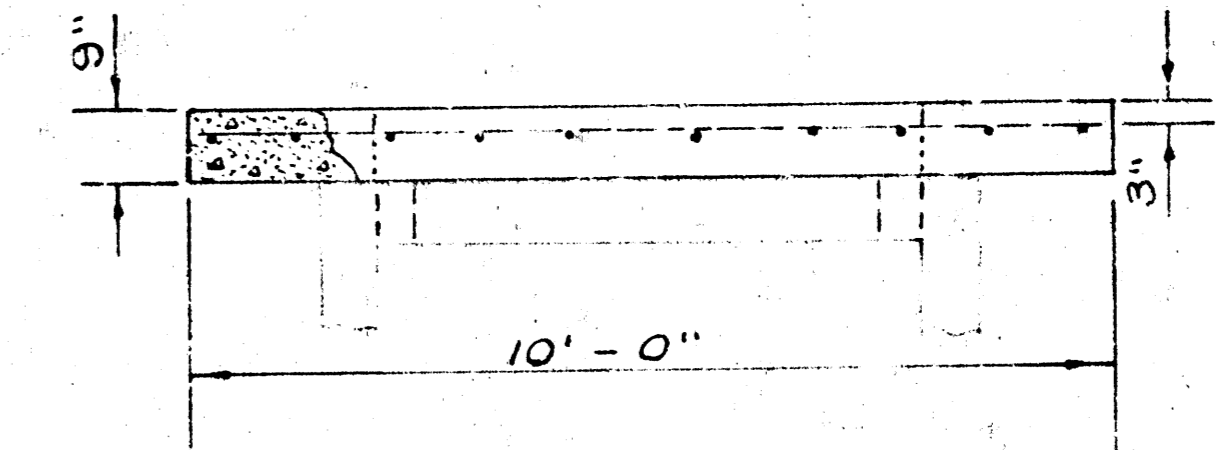
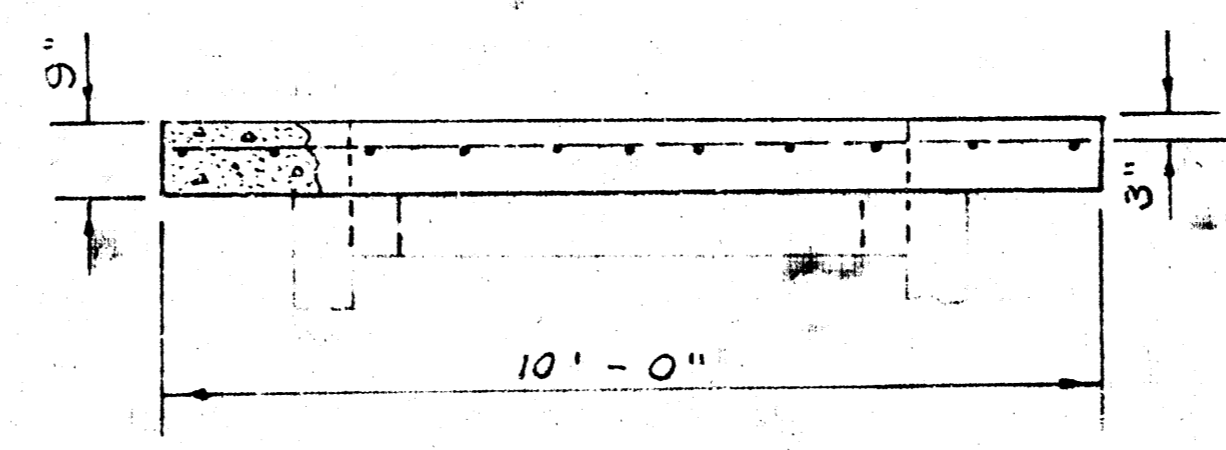
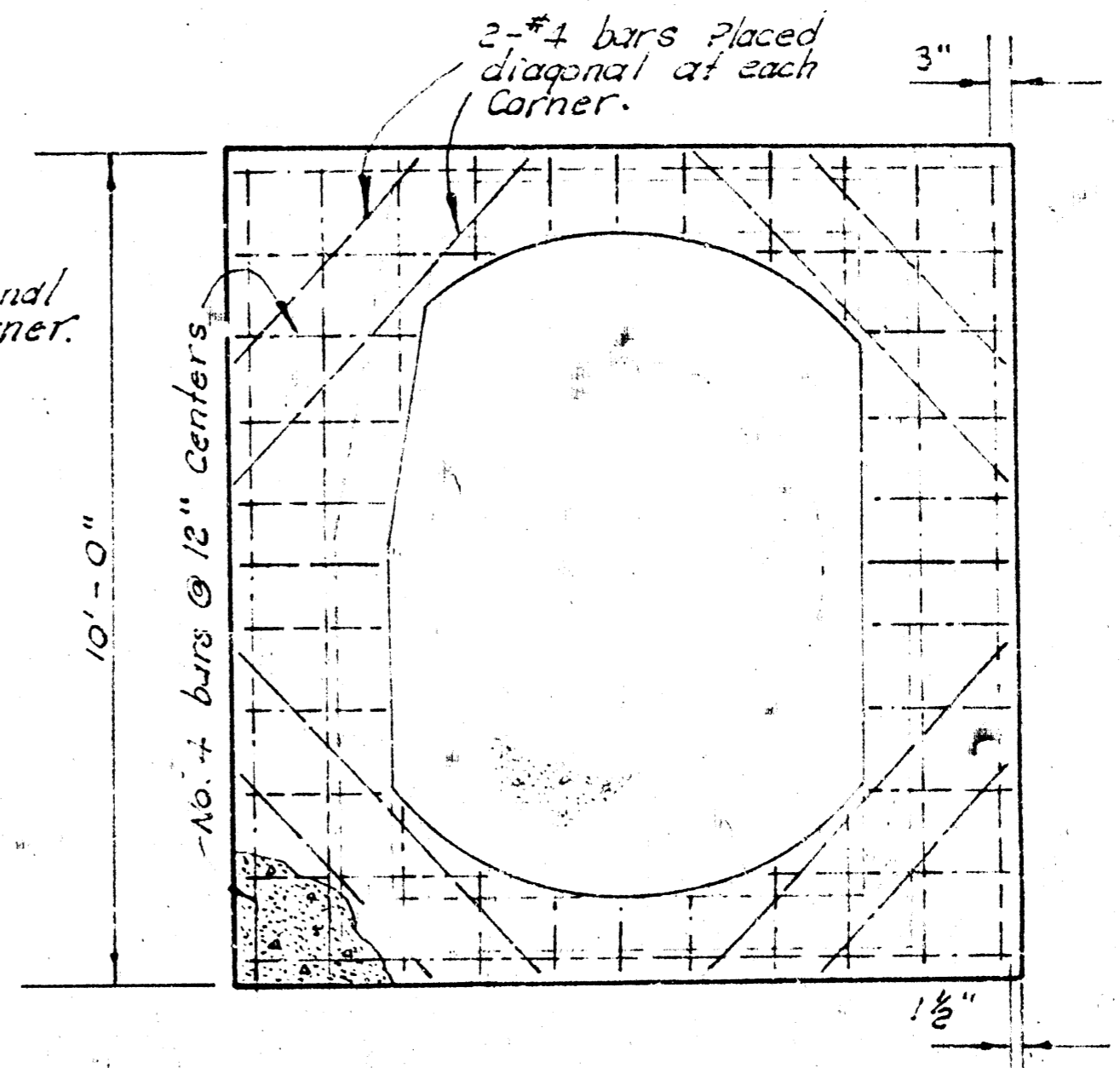
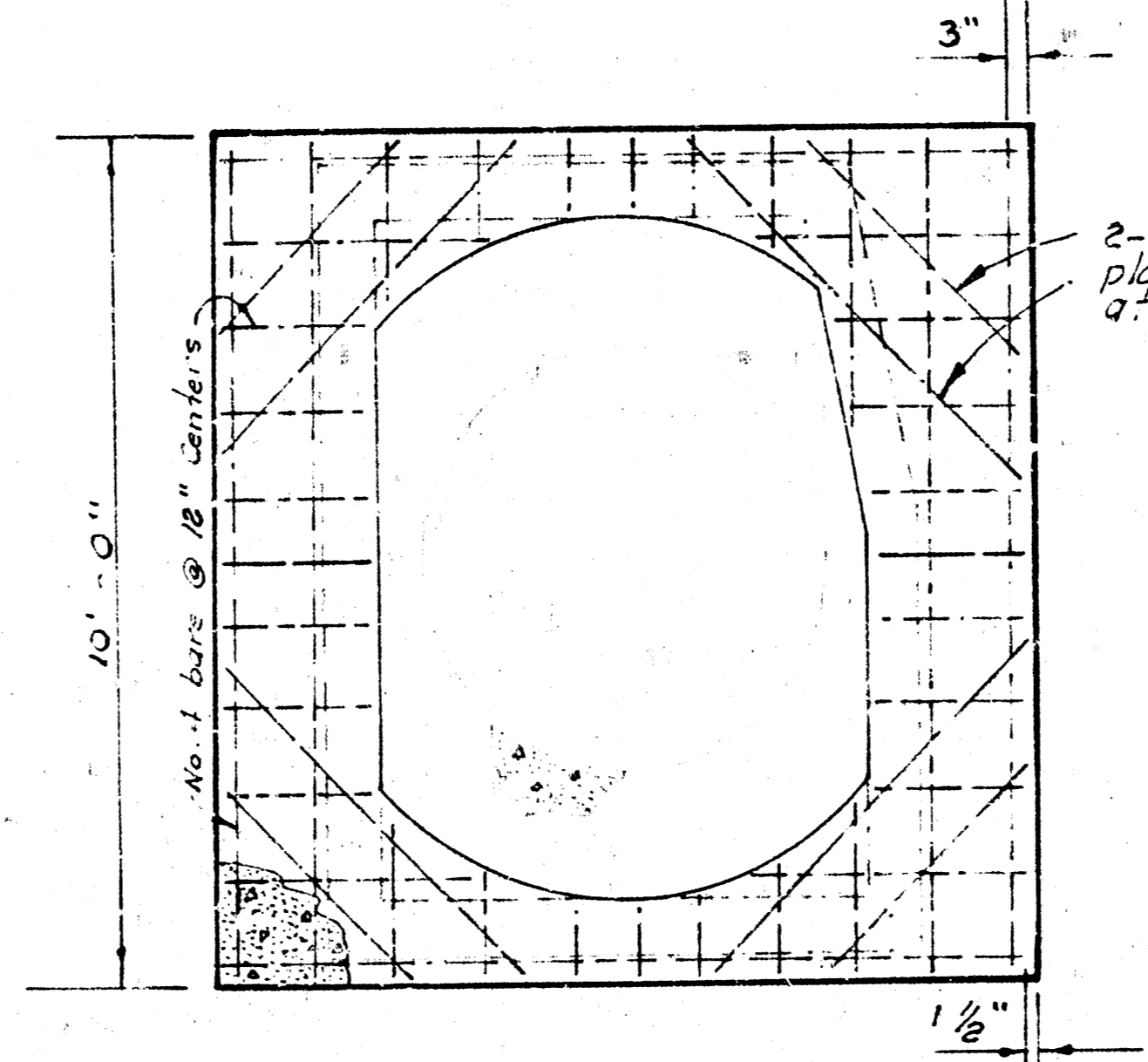
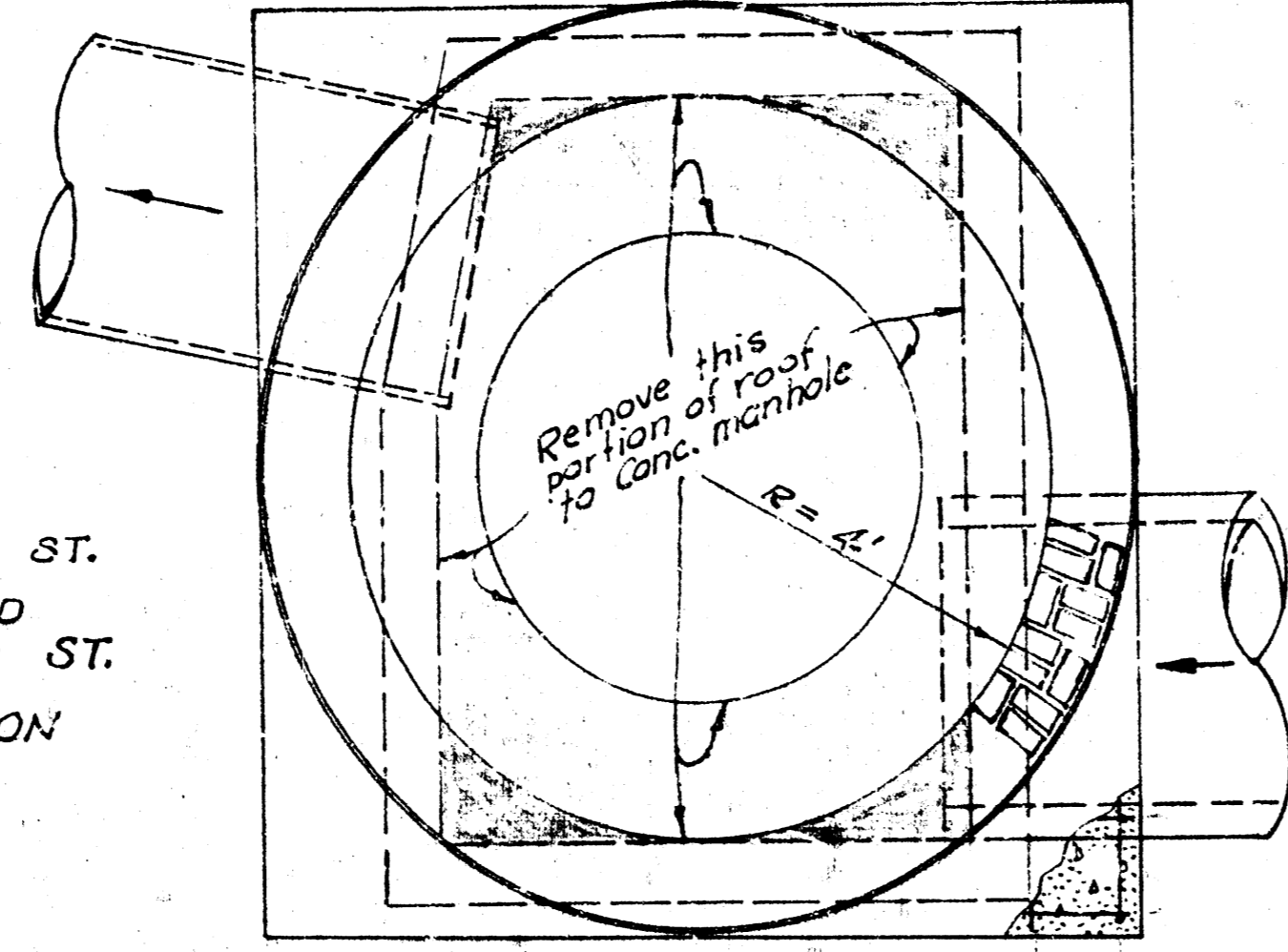
B.M. 111.83 NW cor. conc. cap @ Ent
 to blk. @ 1633 E. 2nd St.
 B.M. 111.17 S.E. cor. conc. wk. E. Side
 Southwest Electric Co. on N.W. cor.
 1st St. & Hydraulic.



ALTERATION, REPAIR, RECONSTRUCTION OR
 CONSTRUCTION OF A SUPPLEMENTAL SEWER TO
 SAN. SEWER NO. 20
 PROJECT NO. DBK L 574069



FIRST ST. AND SECOND ST. SIPHON



NOTE: CONTRACTOR TO USE EXISTING MANHOLE RINGS AND COVERS FOR SIPHON MANHOLE REPLACEMENT. CONTRACTOR TO REMOVE EXISTING BRICK SLABS ON SIPHON MANHOLES AND THAT PORTION OF THE TOP SLABS OF THE CONCRETE MANHOLES AS INDICATED BY PLANS. TOP SLABS OF CONCRETE MANHOLES TO BE RECONSTRUCTED AS SHOWN BY PLANS. PRICE BID FOR RECONSTRUCTION OF SIPHON MANHOLES SHALL INCLUDE ALL COST FOR REMOVAL OF TOP SLAB AND BRICK SLAB, RECONSTRUCTION OF TOP SLAB AND BRICK SLAB, EXCAVATION, SAND BACKFILL AND/OR FLASHING, AND ANY OTHER INCIDENTALS NECESSARY TO COMPLETE THE WORK.

ALTERATION REPAIR, RECONSTRUCTION OR CONSTRUCTION OF A SUPPLEMENTAL SEWER TO SAN. SEWER NO. 20 PROJECT NO. DBK L 574069