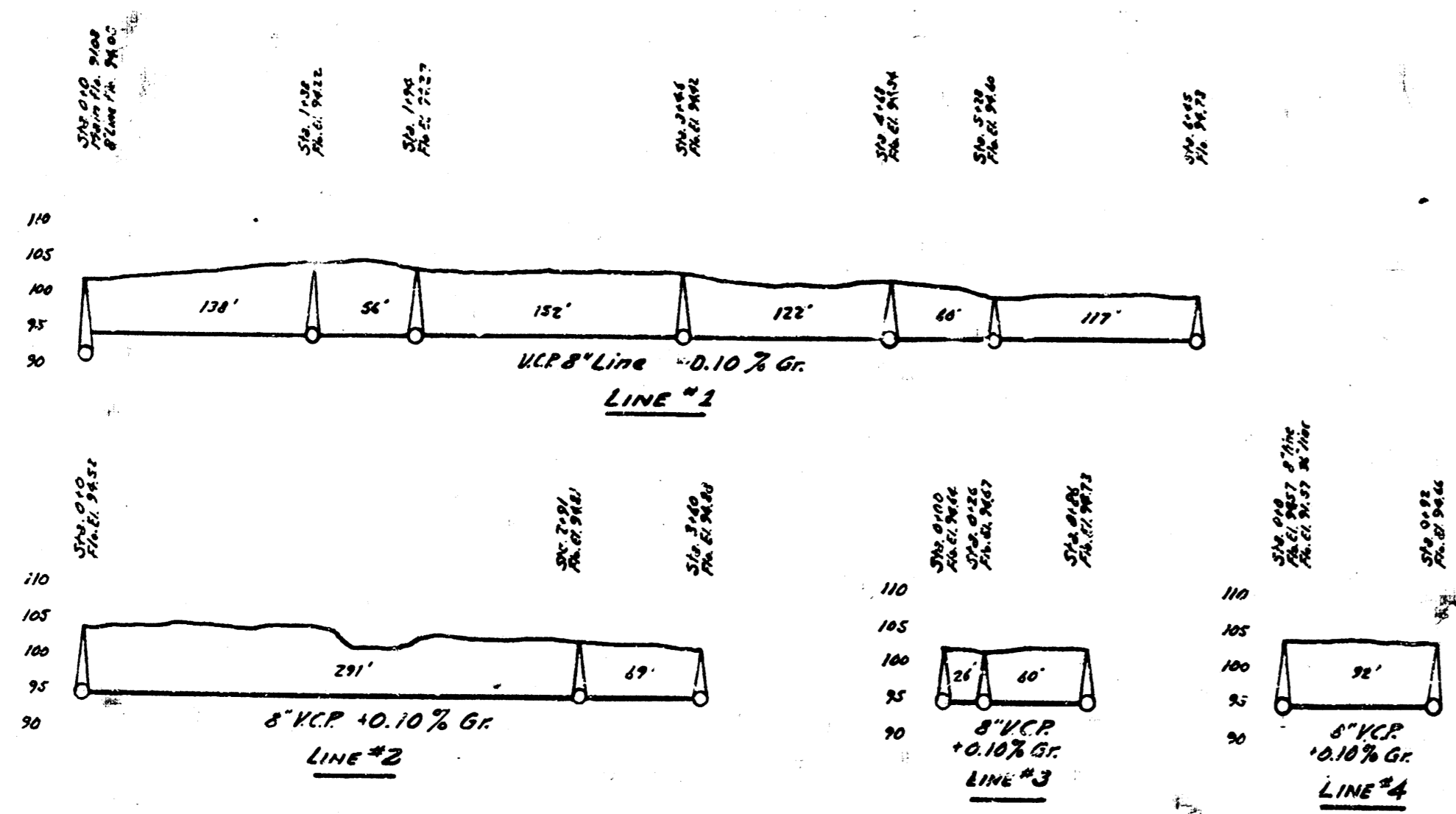
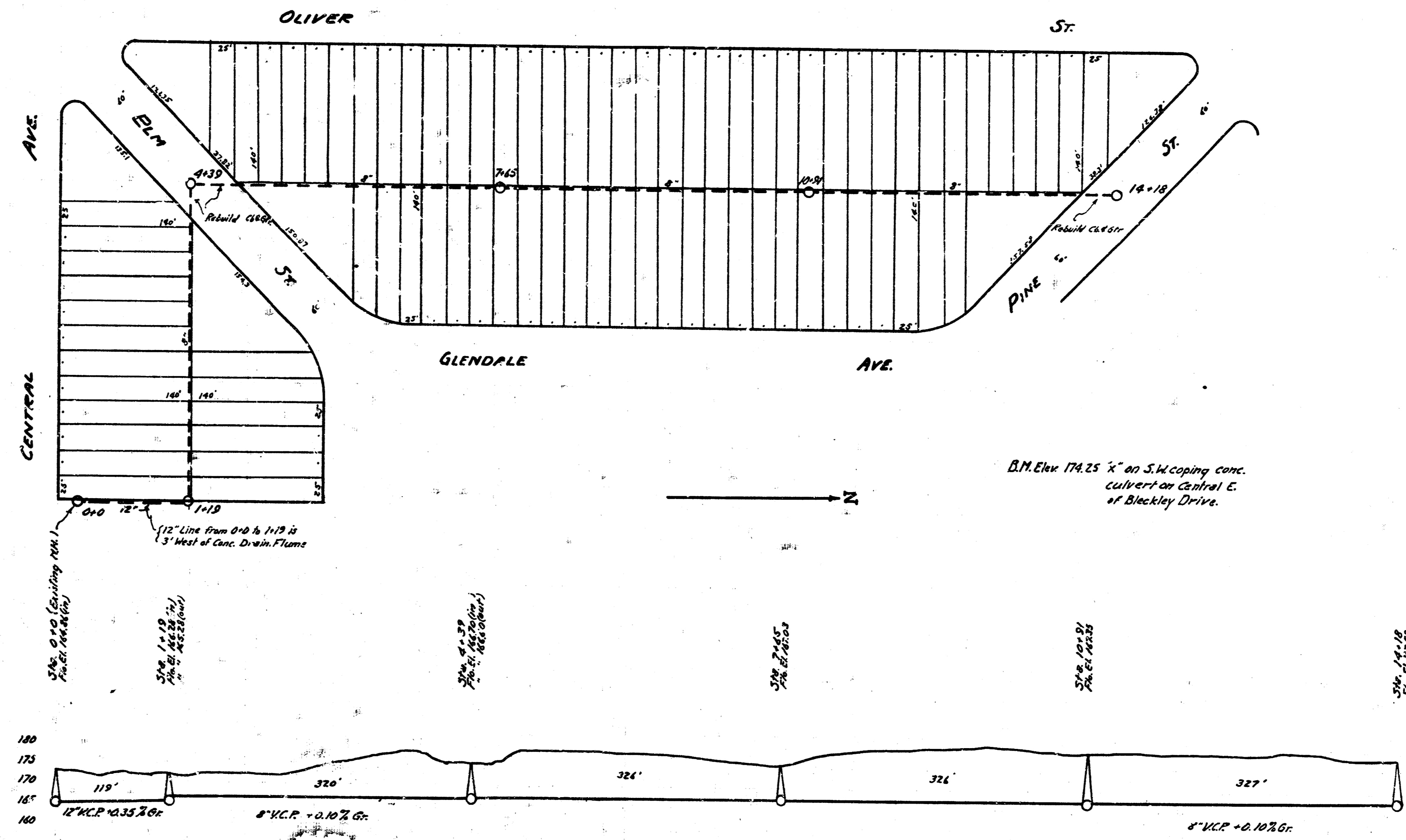


LATERAL 16 S.S. #20



B.M. Elev. 102.14 'x on S. end curb radius SE. cor. Kansas Park



LAT. Q DIST. 6 S.S. #12

ENGINEERING DEPARTMENT
CITY OF WICHITA, KANSAS
D.L. BROOKMAN - CITY ENGINEER
MAY 1932 SCALE 1" = 80'