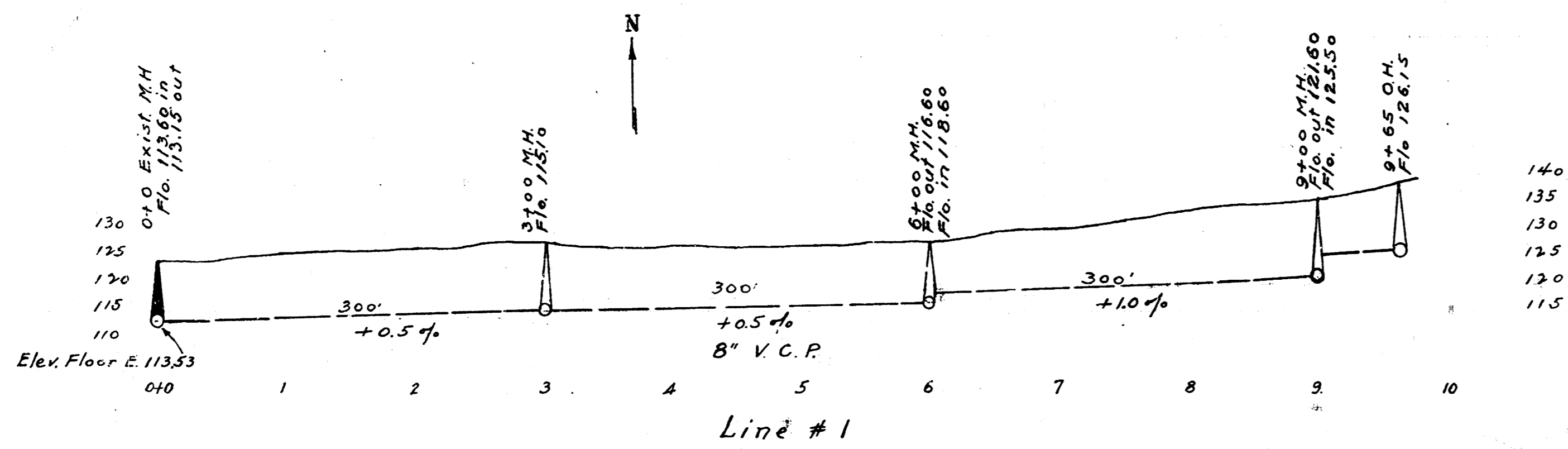
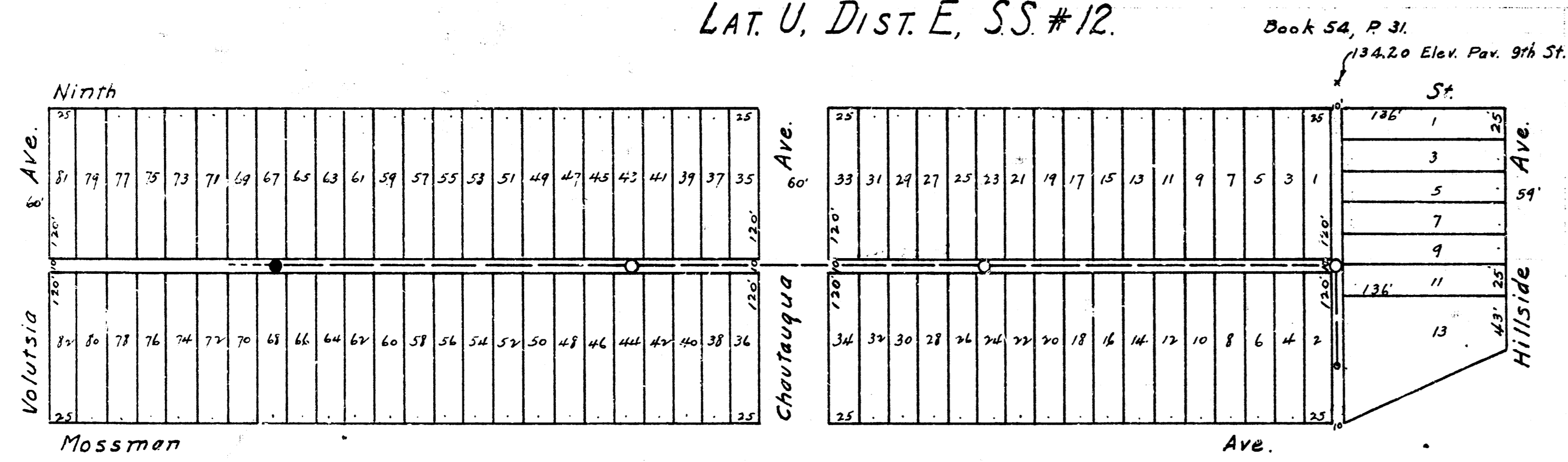
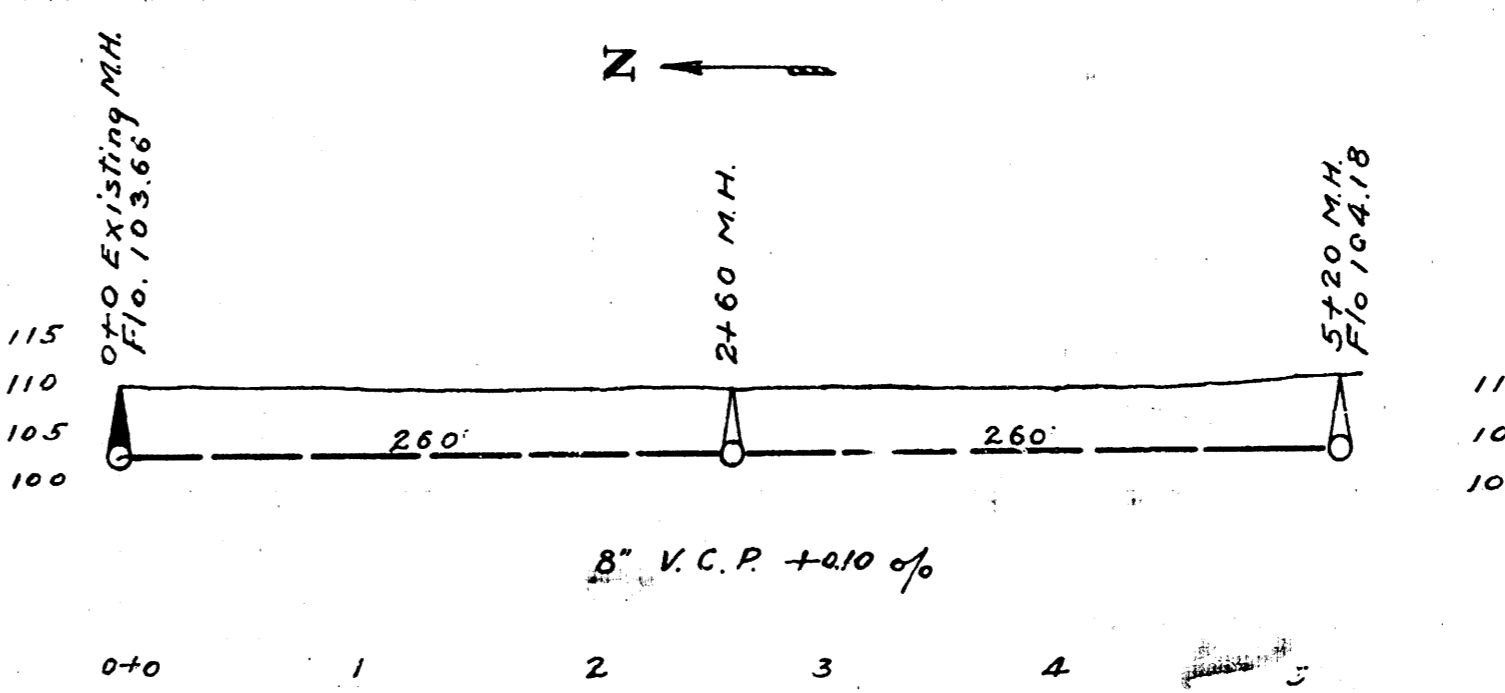
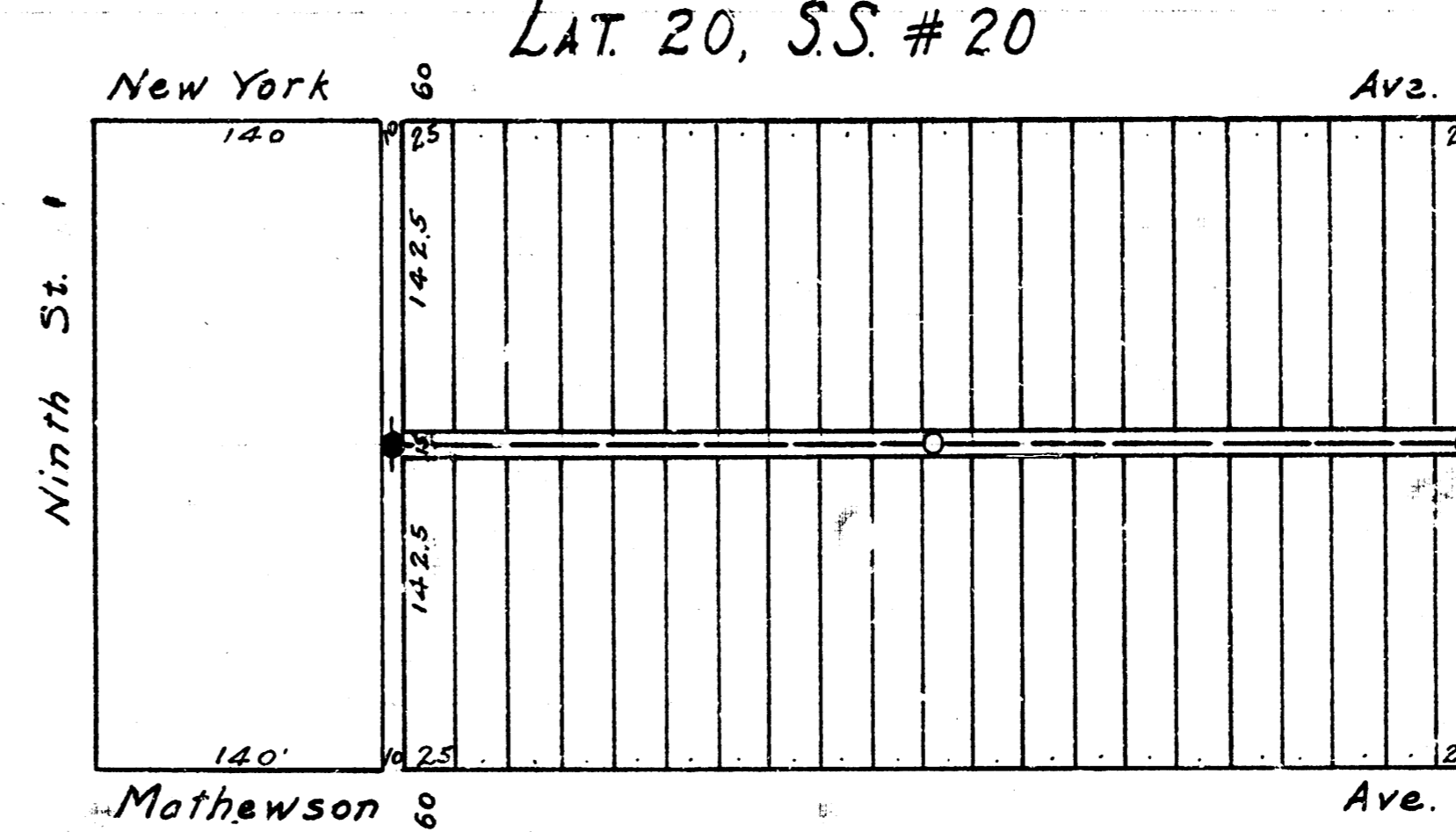


LAT. U, DIST. E, SS #12.



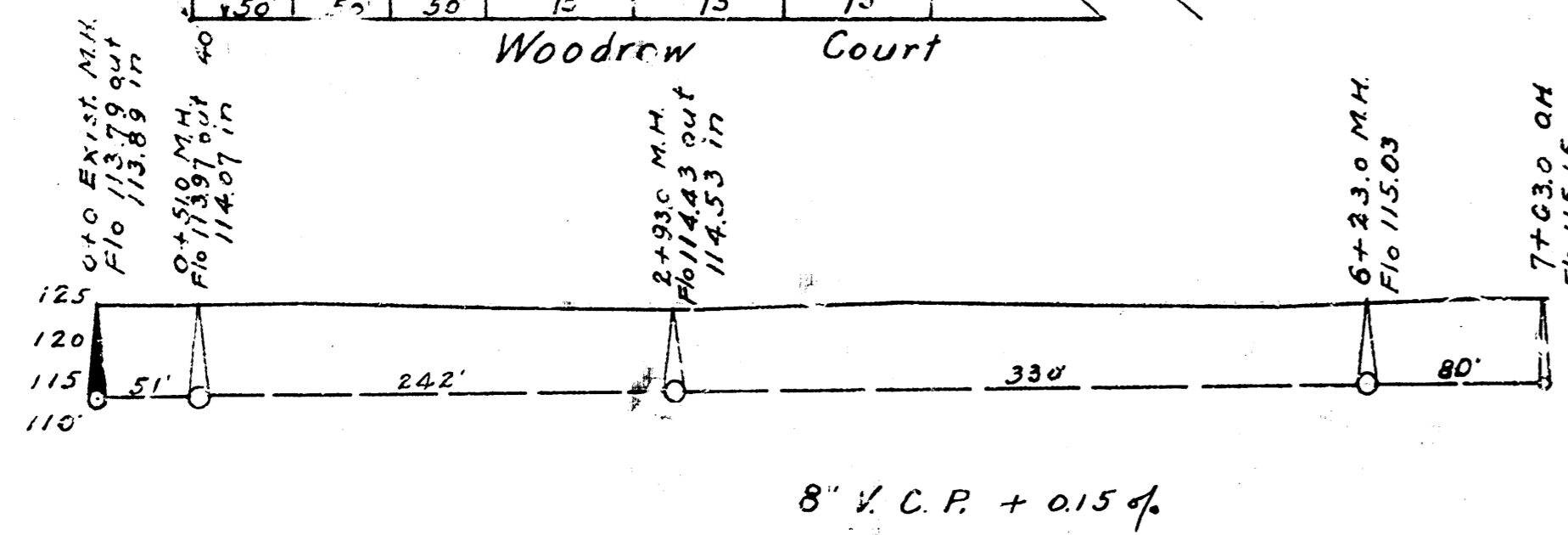
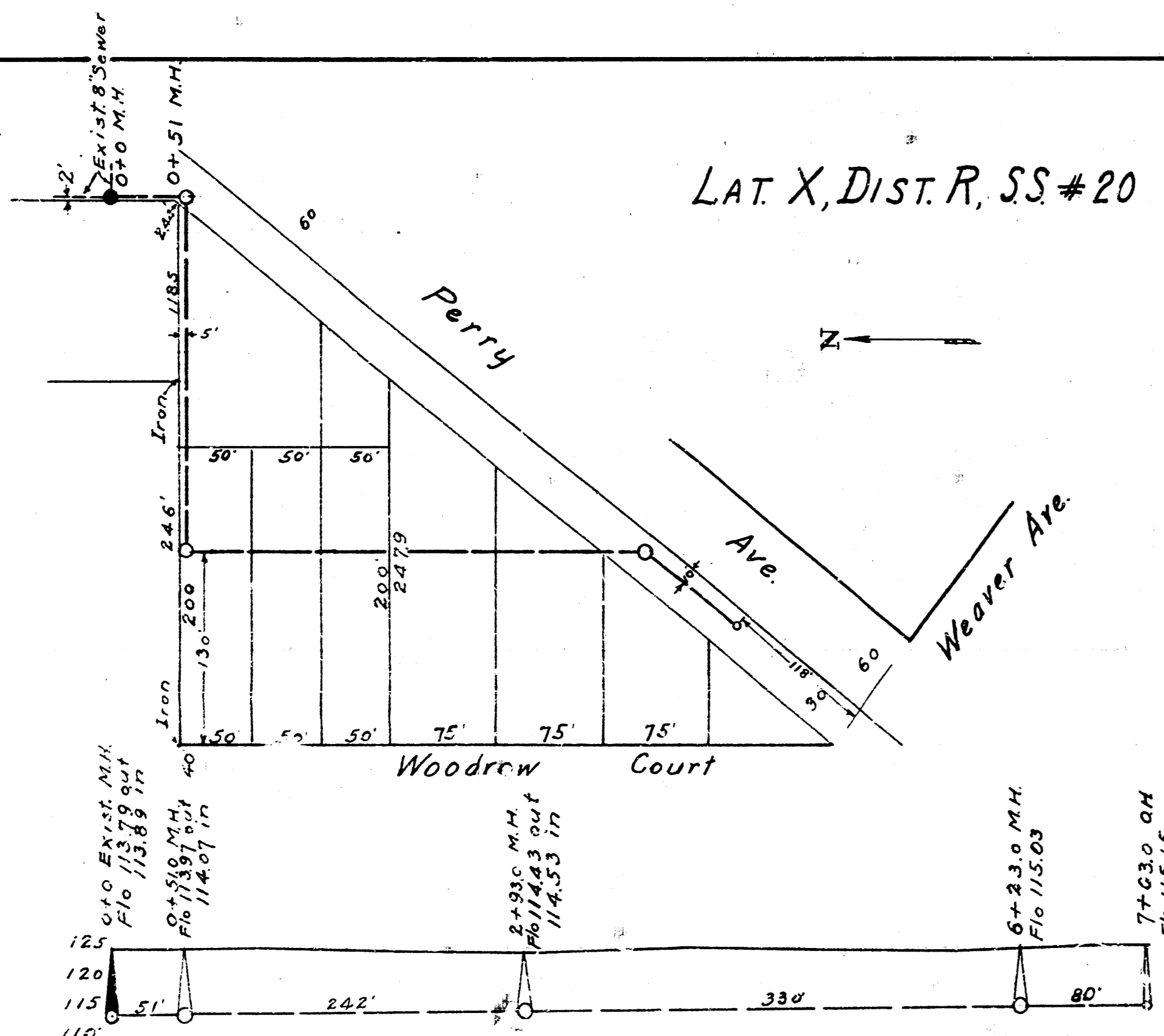
B.M. 12296 Top of thimble at 9th & SW entrance to Cemetery.  
 B.M. 13660 N.W. cor. Wk. N.S. Ho #3024 Mossman.

LAT. 20, SS #20



B.M. 11231 'B' in Buckridge, on curb W.S. Alley N.  
 bet. New York & Mathewson, N.S. 9th St.

LAT. X, DIST. R, SS #20



B.M. 12327 S. cb. 14th, E.L. Perry

ENGINEERING DEPARTMENT  
 CITY OF WICHITA, KANSAS.  
 L.K. WHITE, CITY ENGINEER.  
 FEB. 1945. CH.MILLS.