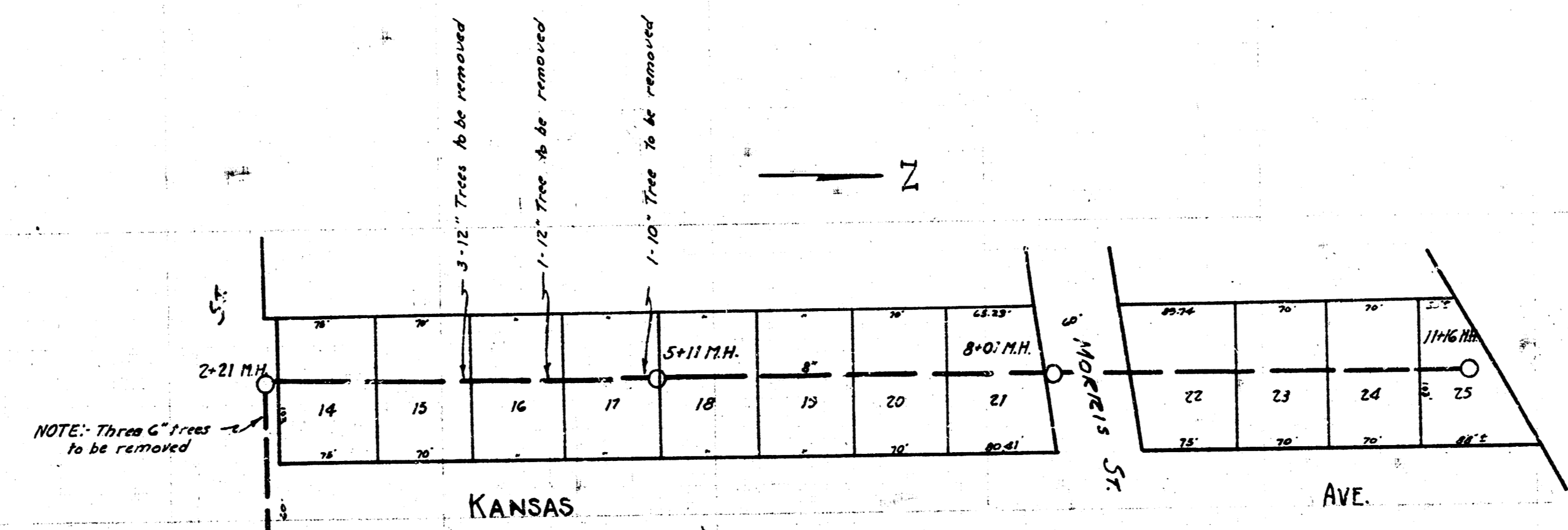
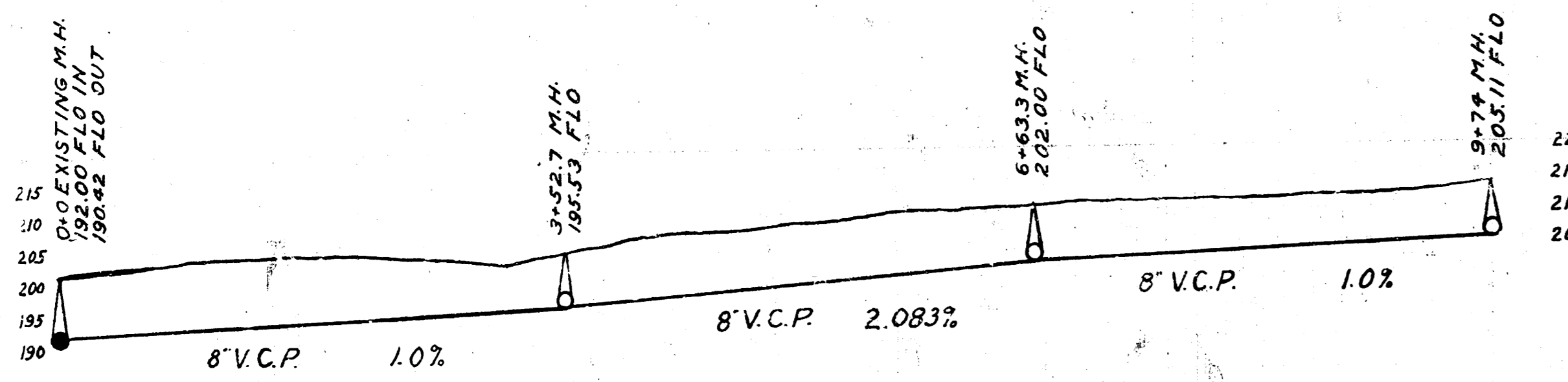
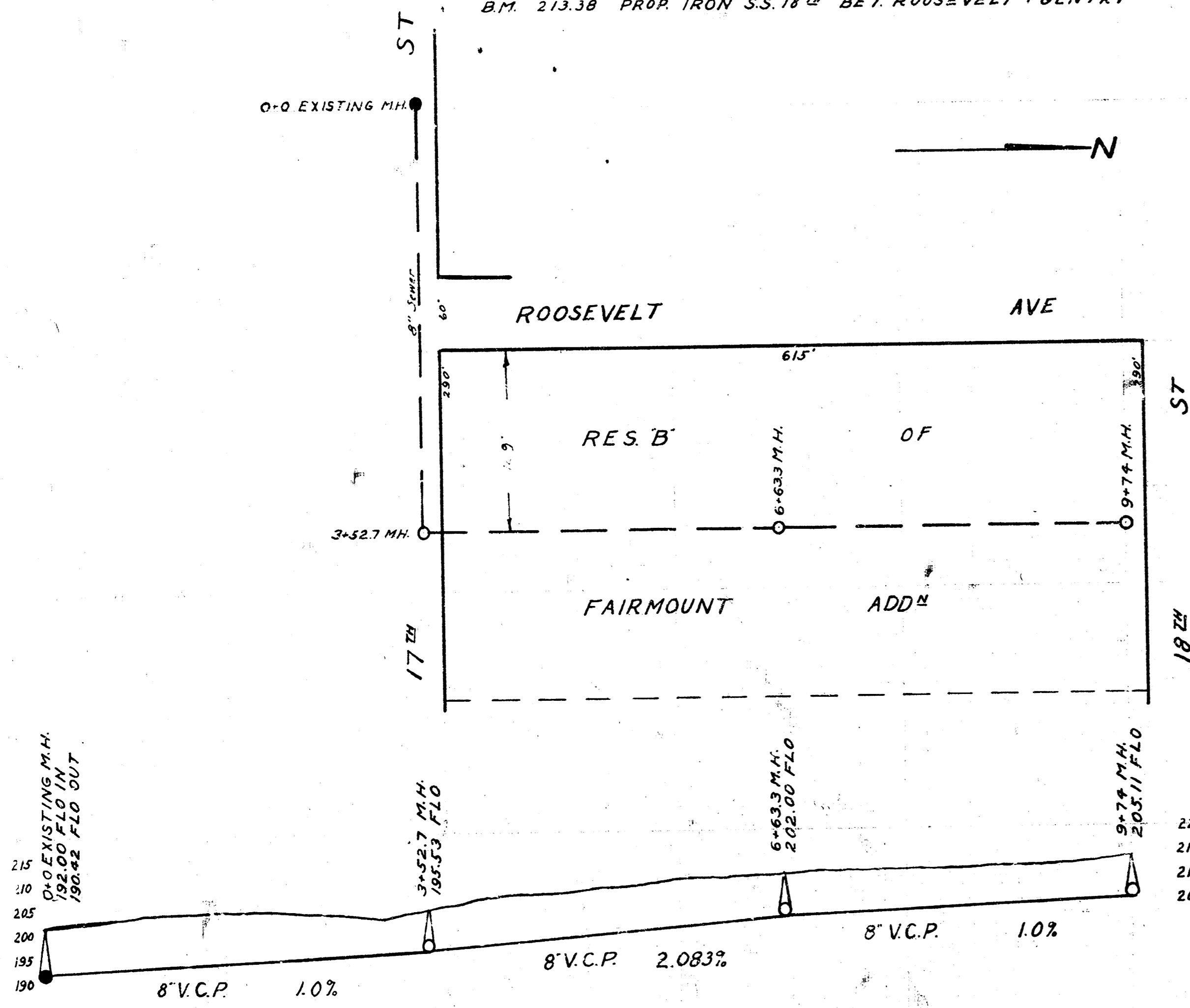


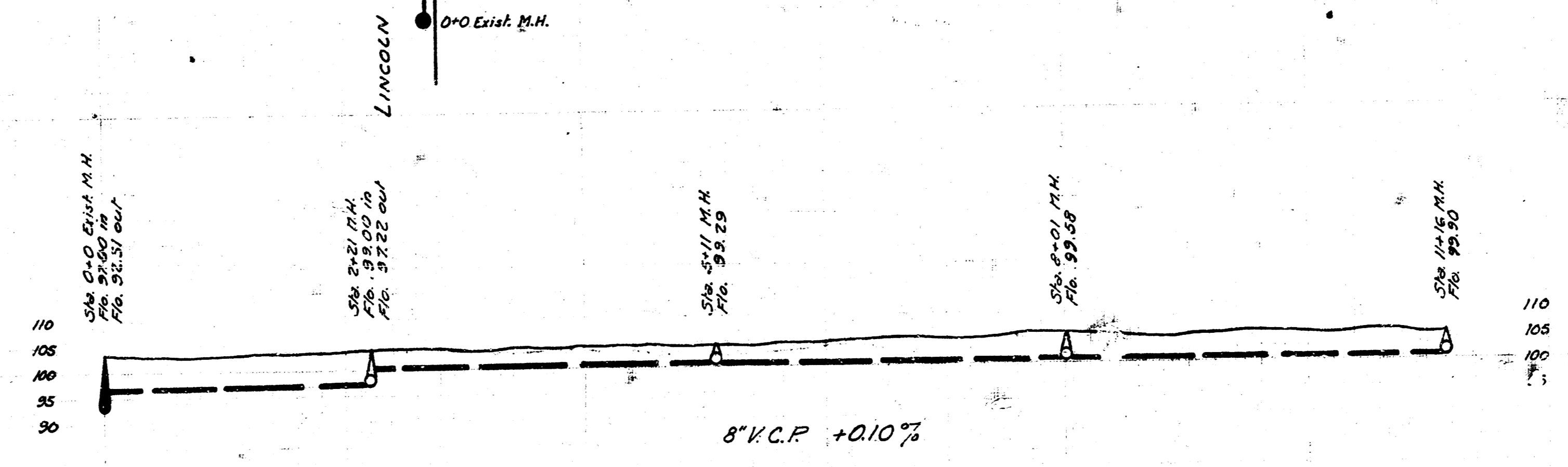
LAT. W DIST. E S.S. #12

B.M. 207.63 T IN TROY, TOP FIRE HYDRANT S.S. 17TH + ROOSEVELT
 B.M. 213.38 PROP. IRON S.S. 18TH BET. ROOSEVELT + GENTRY



NOTE: Three C Trees to be removed

B.M. 103.75 3/4 Penny spikes in T. Pole at N.E. Lincoln + 100' East of Kansas Ave.
 103.65 Top of Iron S.M. cap Morris + Kansas.



LAT. 26. S.S. #20

DEPARTMENT OF PUBLIC SERVICE
 ENGINEERING DIVISION
 L.K. WHITE CITY ENGINEER
 LATERAL 26, S.S. #20
 Plan Scale 1"=60' Dec. 1946
 PROJECT CZ6-30