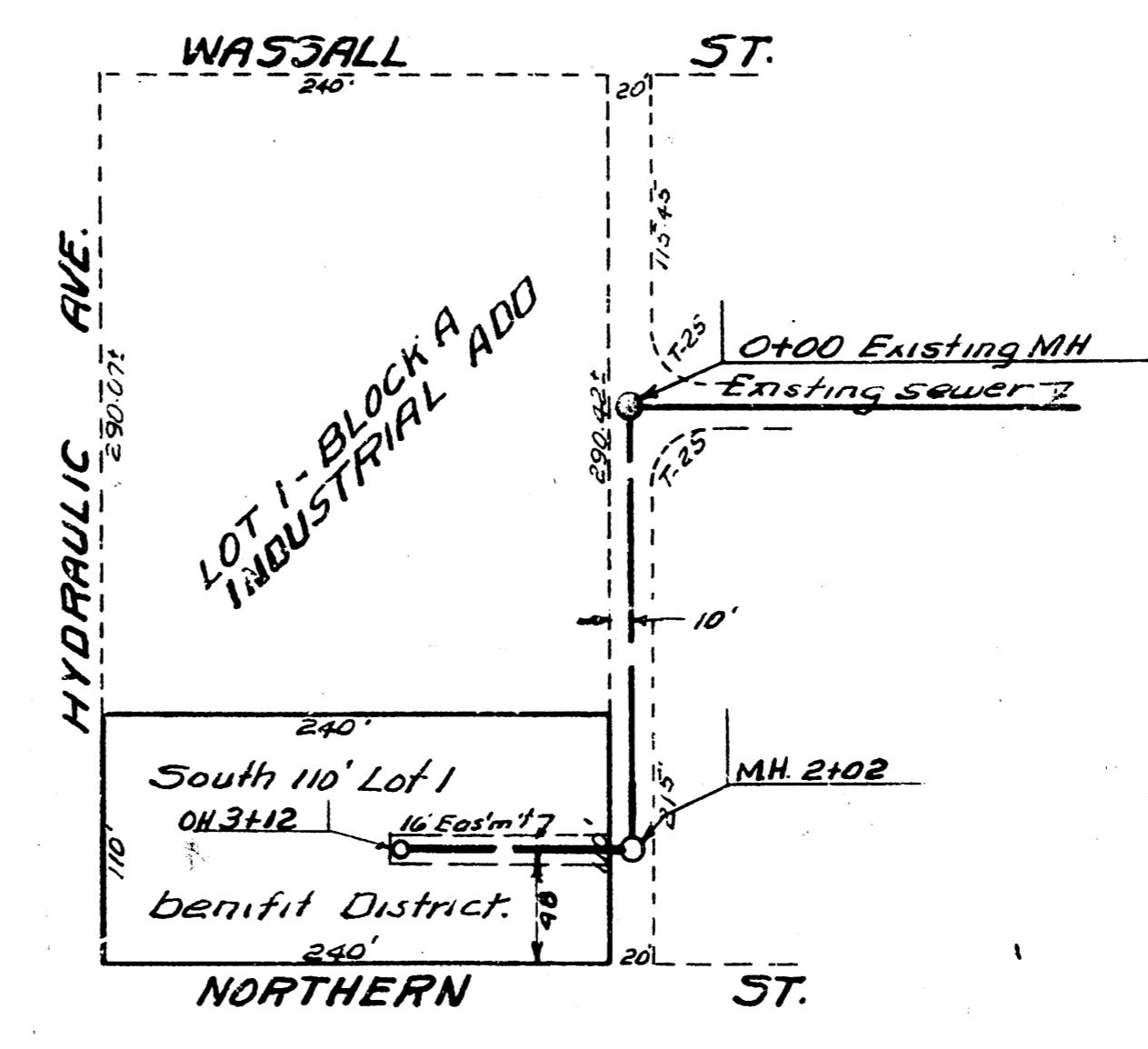


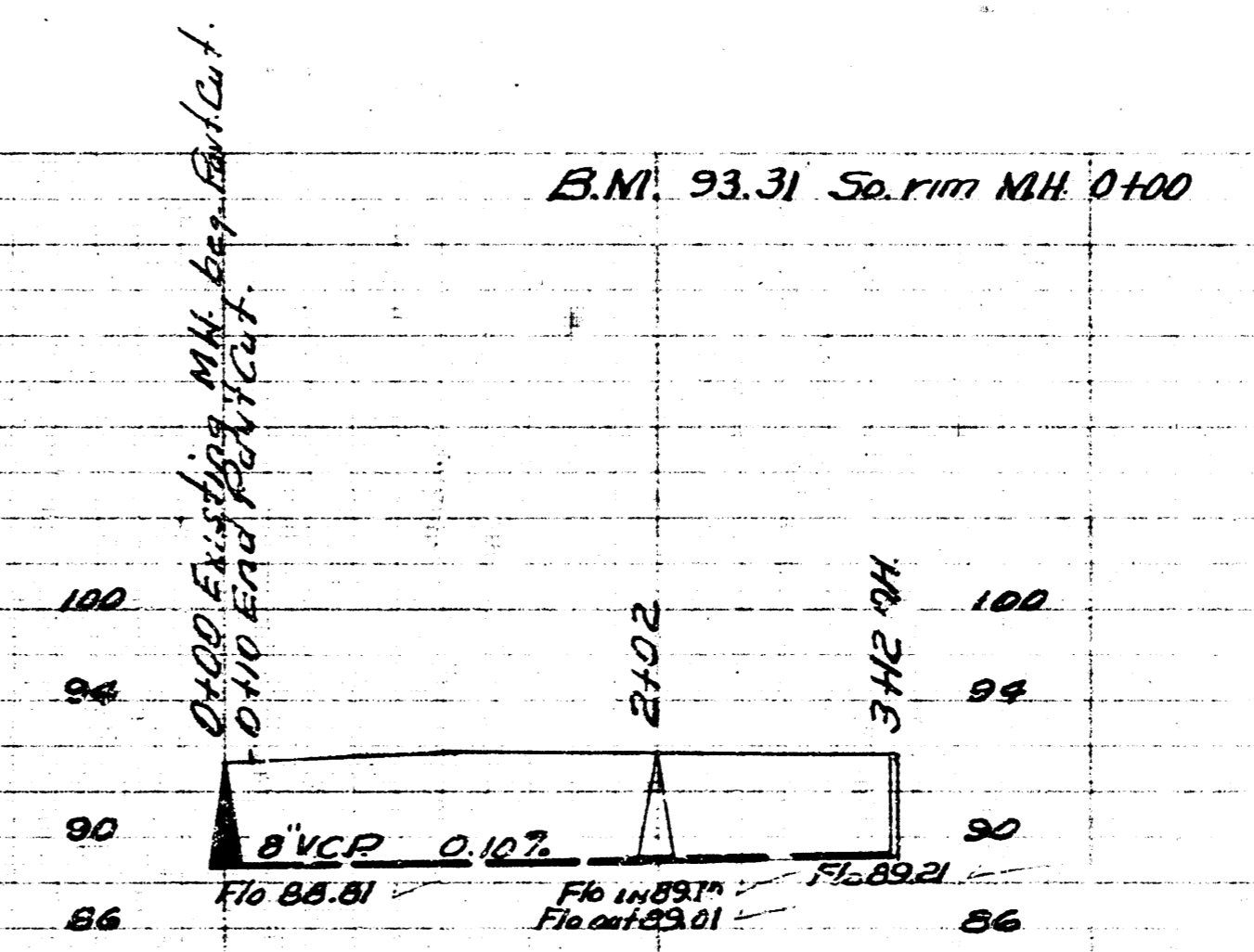
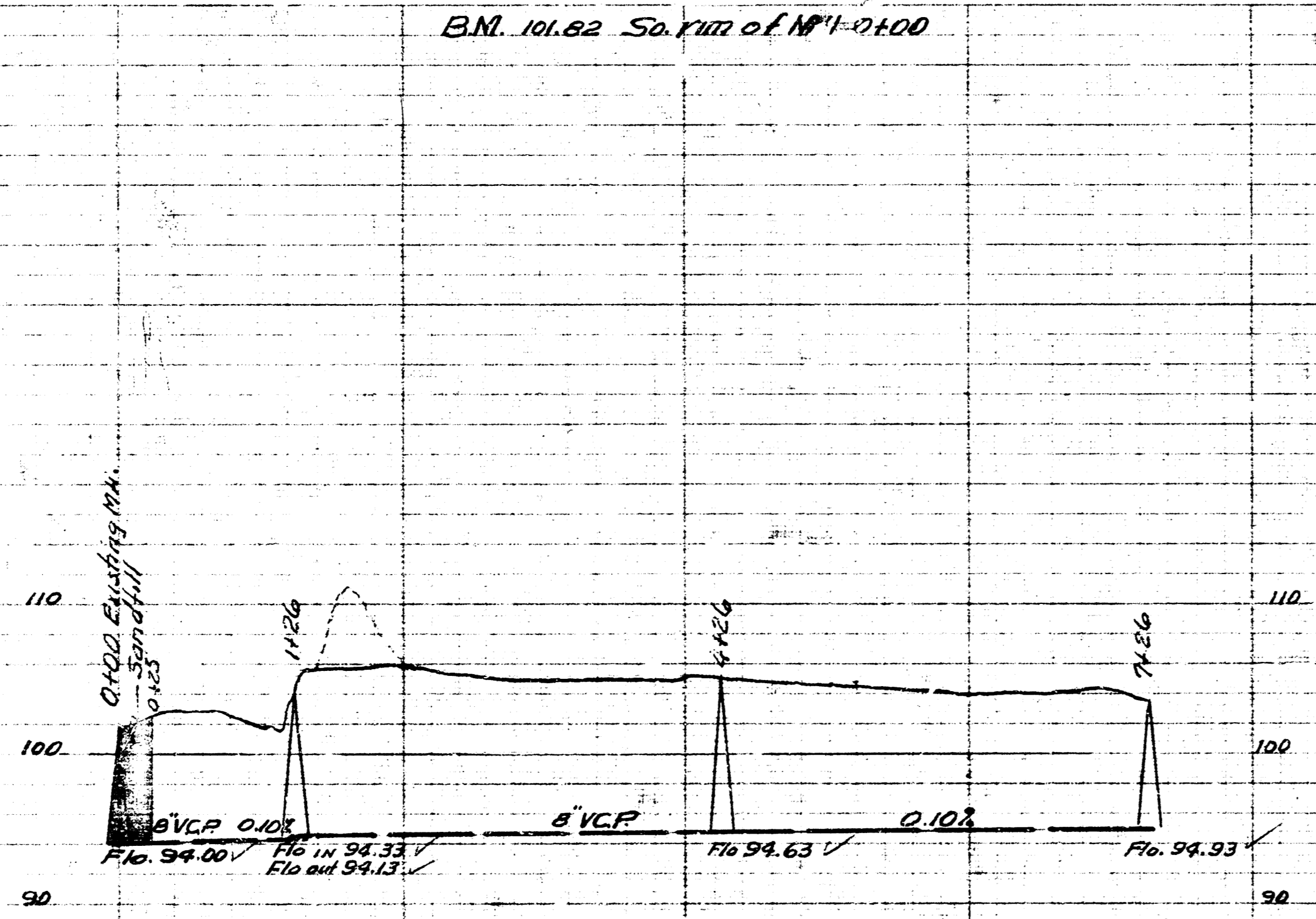
Scale: 1"=60'



Scale: 1"=60'

Date 9-11-53
 Drawn by McClain
 Checked by 67Y

Date 9-16-53
 Drawn by McClain
 Checked by 67Y



Trench shall be sand backfilled within 1' of top of ground.

LAT. 20 DIST. A15 5312
 CITY OF WICHITA KANSAS
 B.E. SMITH CITY ENGINEER
 Proj. No. C-23-93

SUB. LAT 1 - LAT 32 - SS. 20
 CITY OF WICHITA KANSAS
 B.E. SMITH CITY ENGINEER
 Proj. No. C-23-95