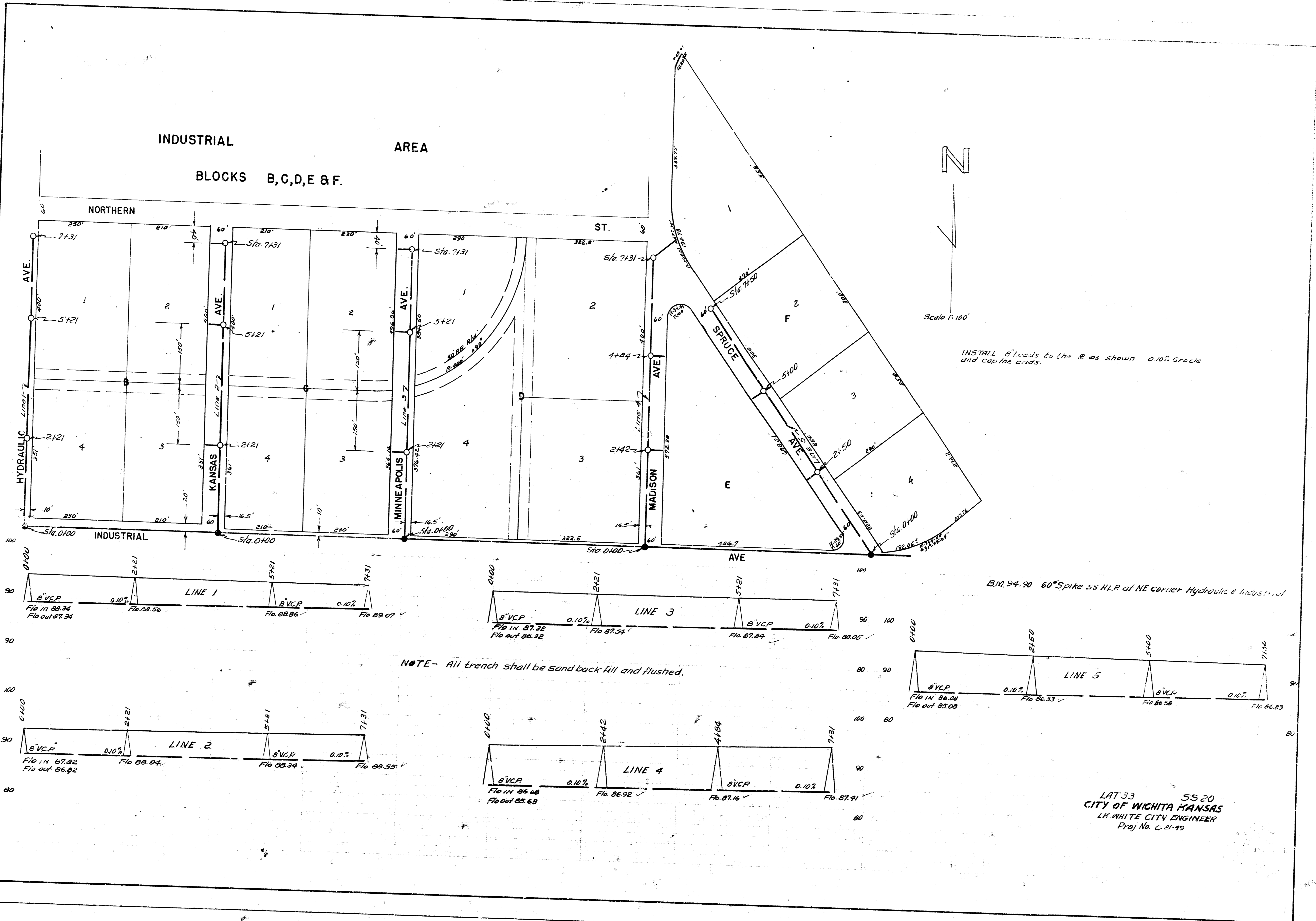


INDUSTRIAL AREA

BLOCKS B, C, D, E & F.



Scale 1:100

INSTALL 8" leads to the R as shown 0.10% grade and cap the ends.

10.9.92  
 Drawn by  
 Checked by  
 55-Y

B.M. 94.90 60" Spike SS H.P. at NE corner Hydraulic & Industrial

NOTE - All trench shall be sand back fill and flushed.

LAT. 33 55.20  
 CITY OF WICHITA KANSAS  
 LEWIS WHITE CITY ENGINEER  
 Proj No. C-21-99