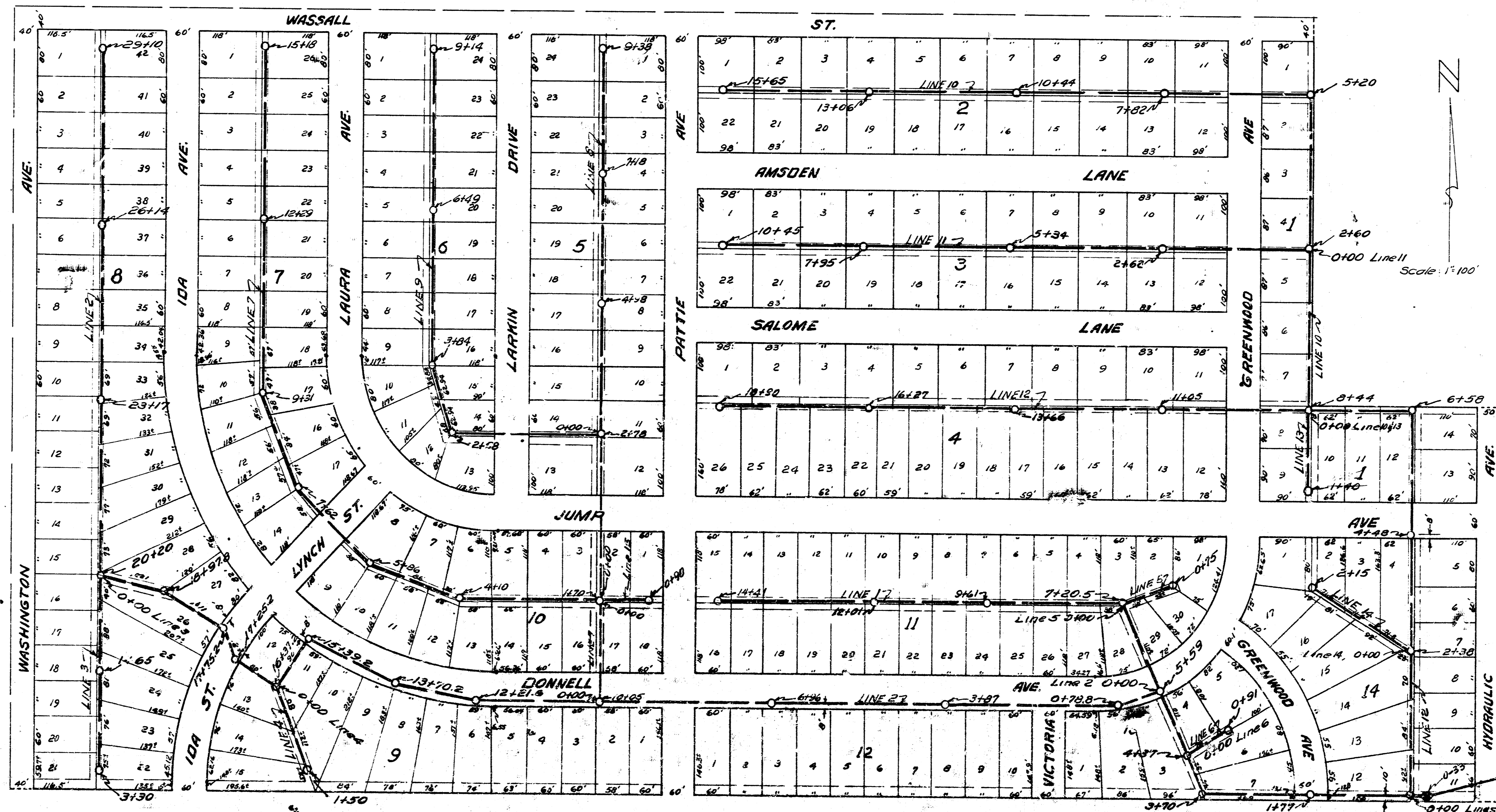


SCHRADER BROS 2ND. & 3RD. ADDITION

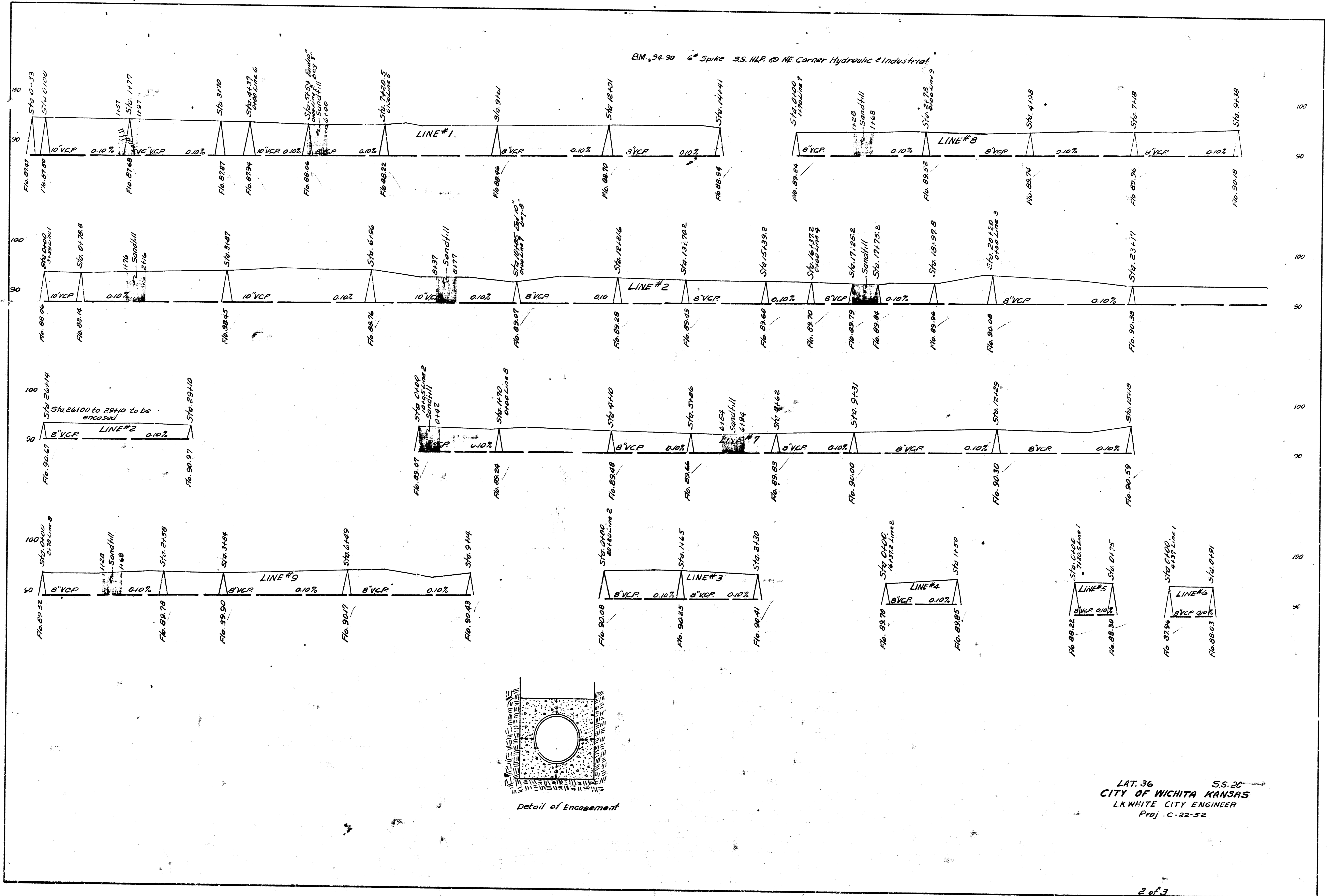


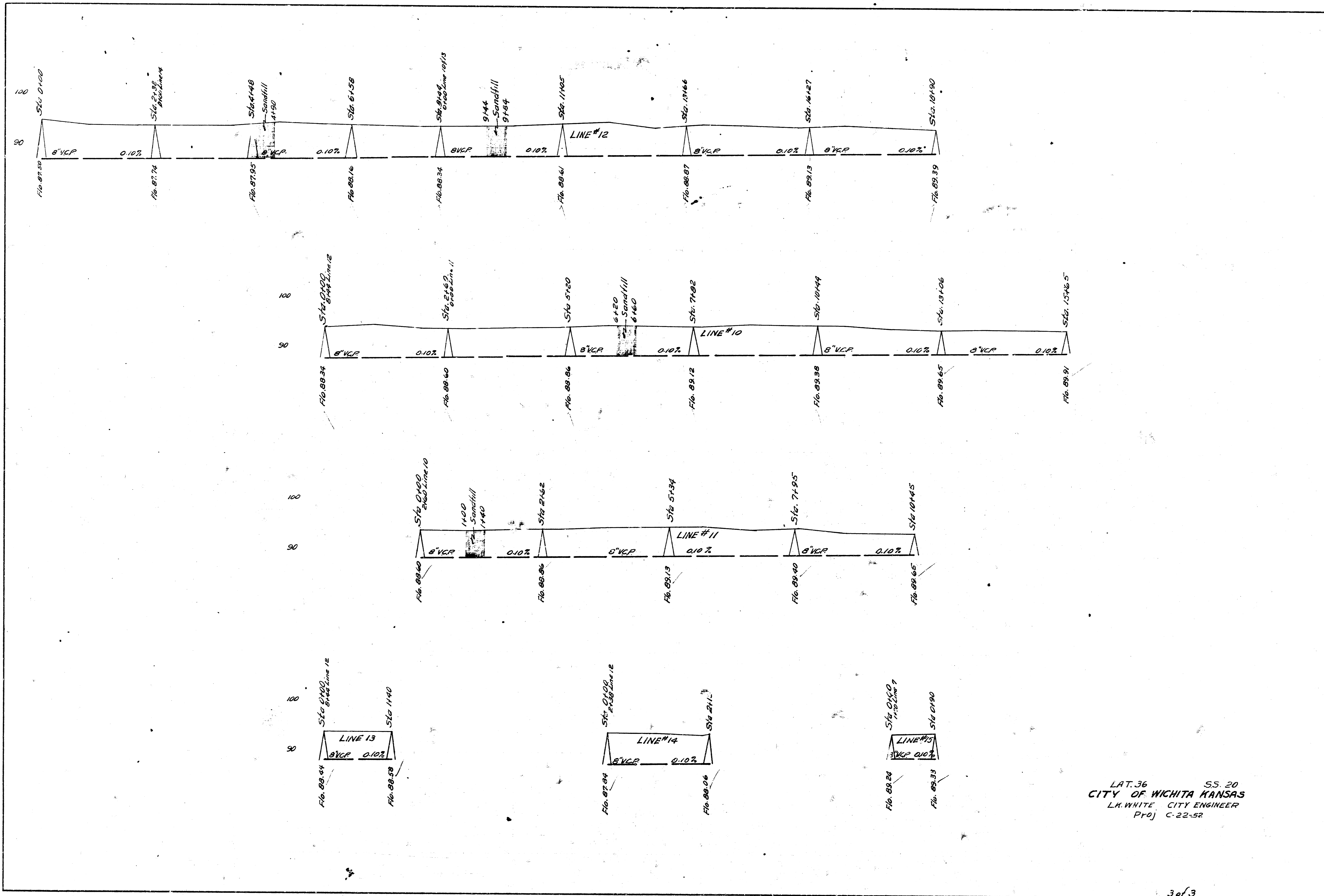
Date 7-18-52  
 Drawn by L.M. Cain  
 Checked by Book No. 100

LAT 36 SS 20  
 CITY OF WICHITA KANSAS  
 LK WHITE CITY ENGINEER  
 Proj. No. C-22-52

*L.M. Cain*  
 Assistant City Engineer, Wichita, Kan.

BM. 94.20 6" Spike S.S. H.P. @ NE Corner Hydraulic & Industrial





LAT. 36 SS. 20  
 CITY OF WICHITA KANSAS  
 L.H. WHITE CITY ENGINEER  
 Proj. C-22-52