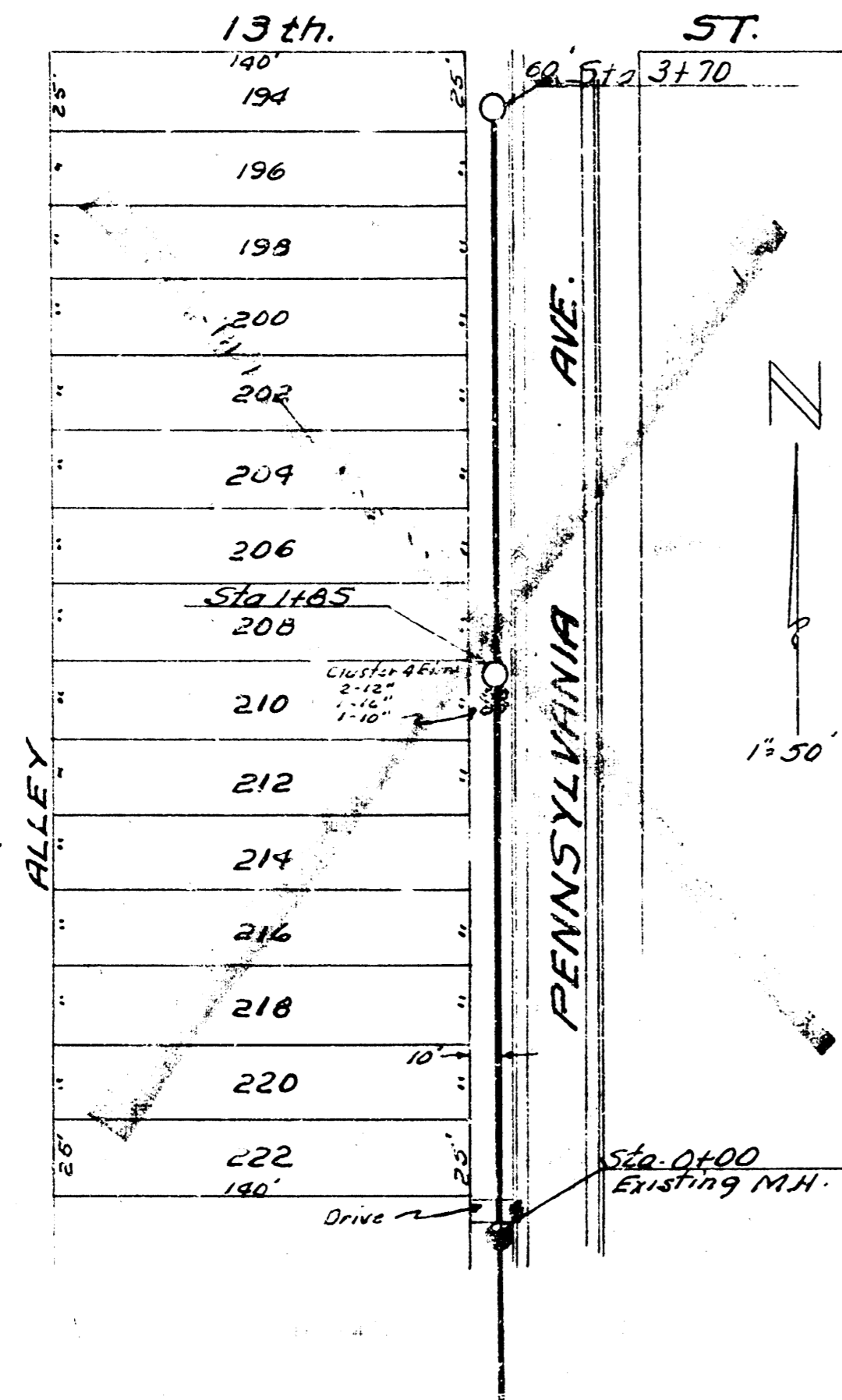


1/10/13
J.M.S.
L.M.H.

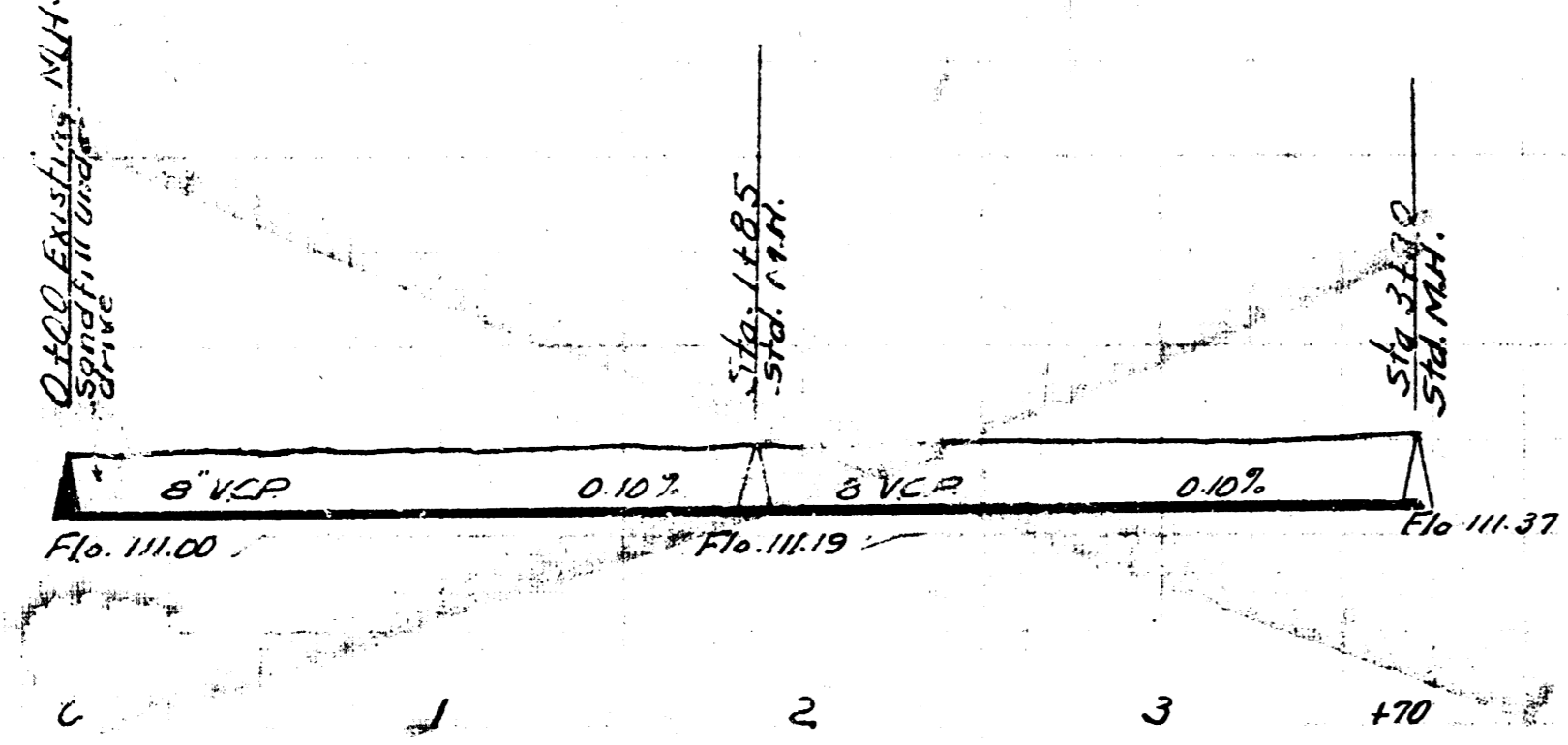
A-19

120
115
110

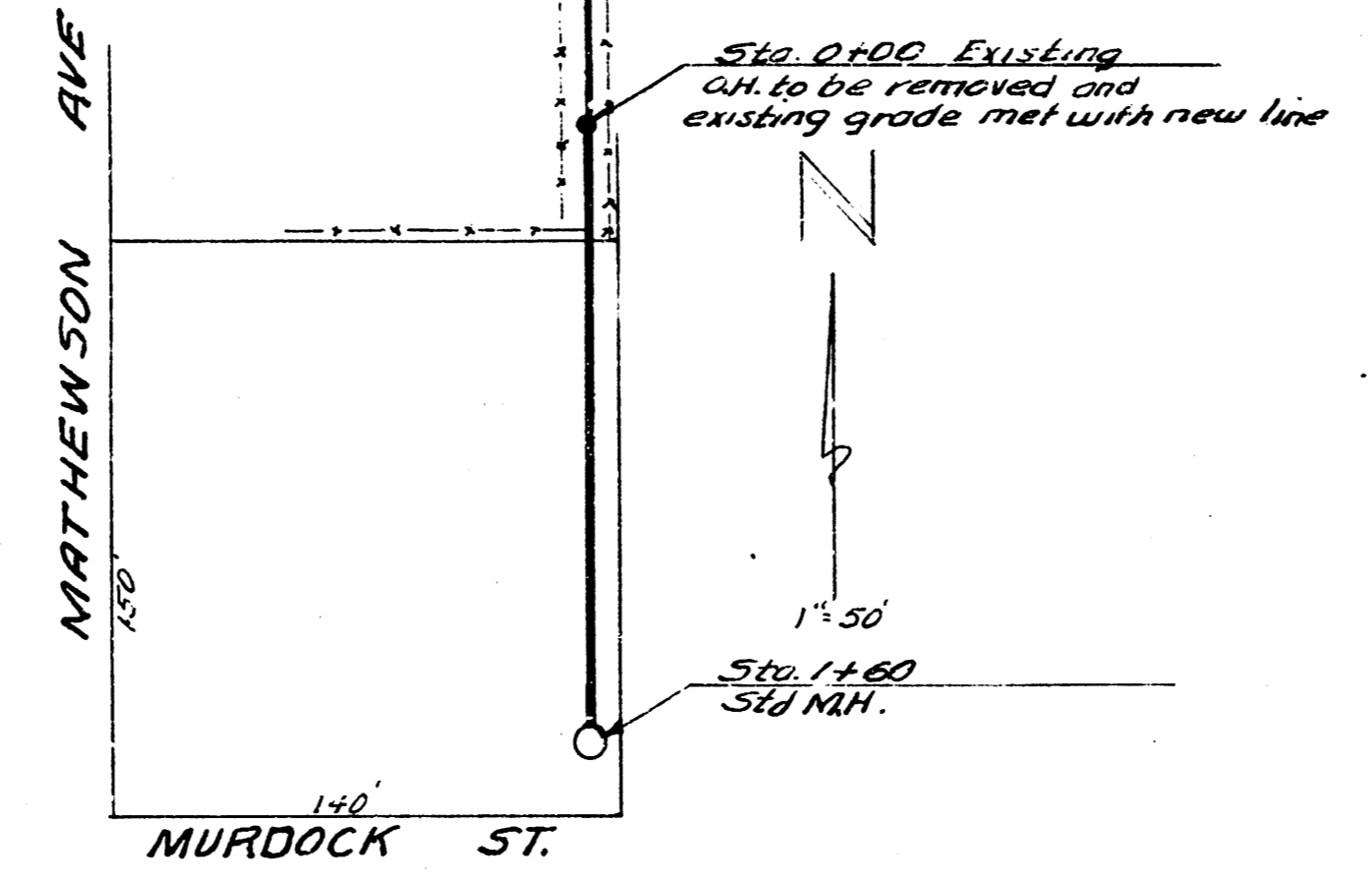
A-19



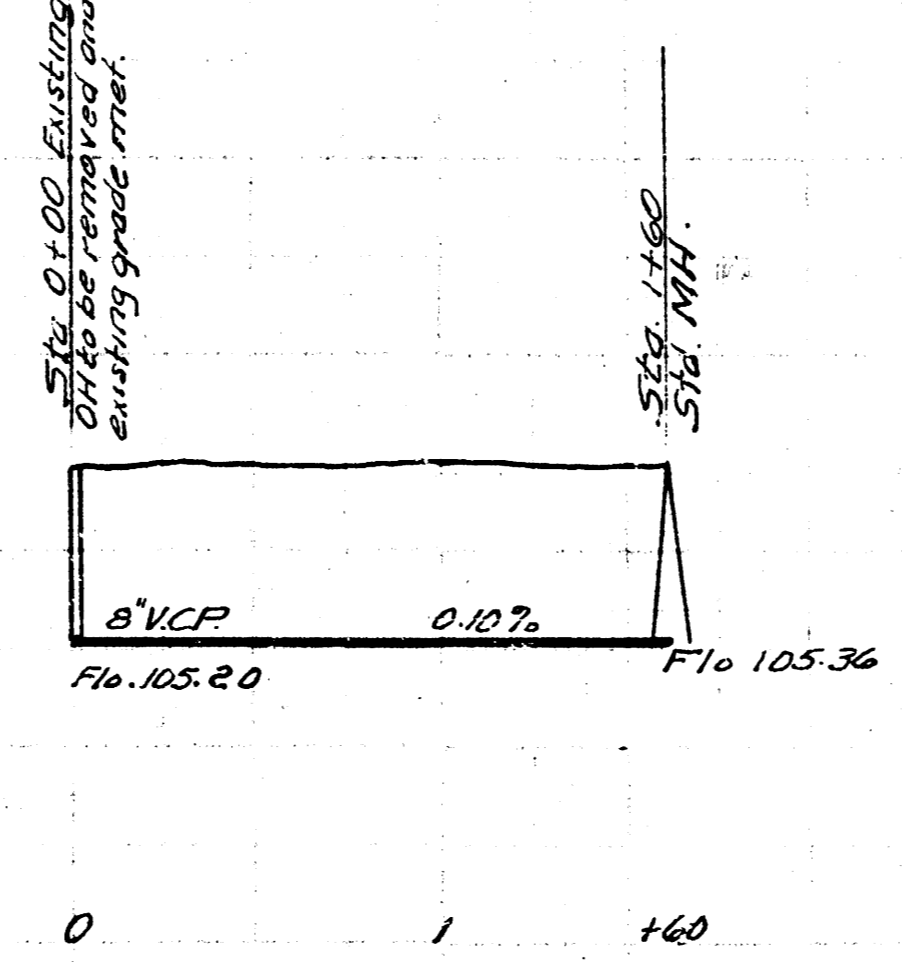
BM. 119.41 So. Rim M.H. 0+00



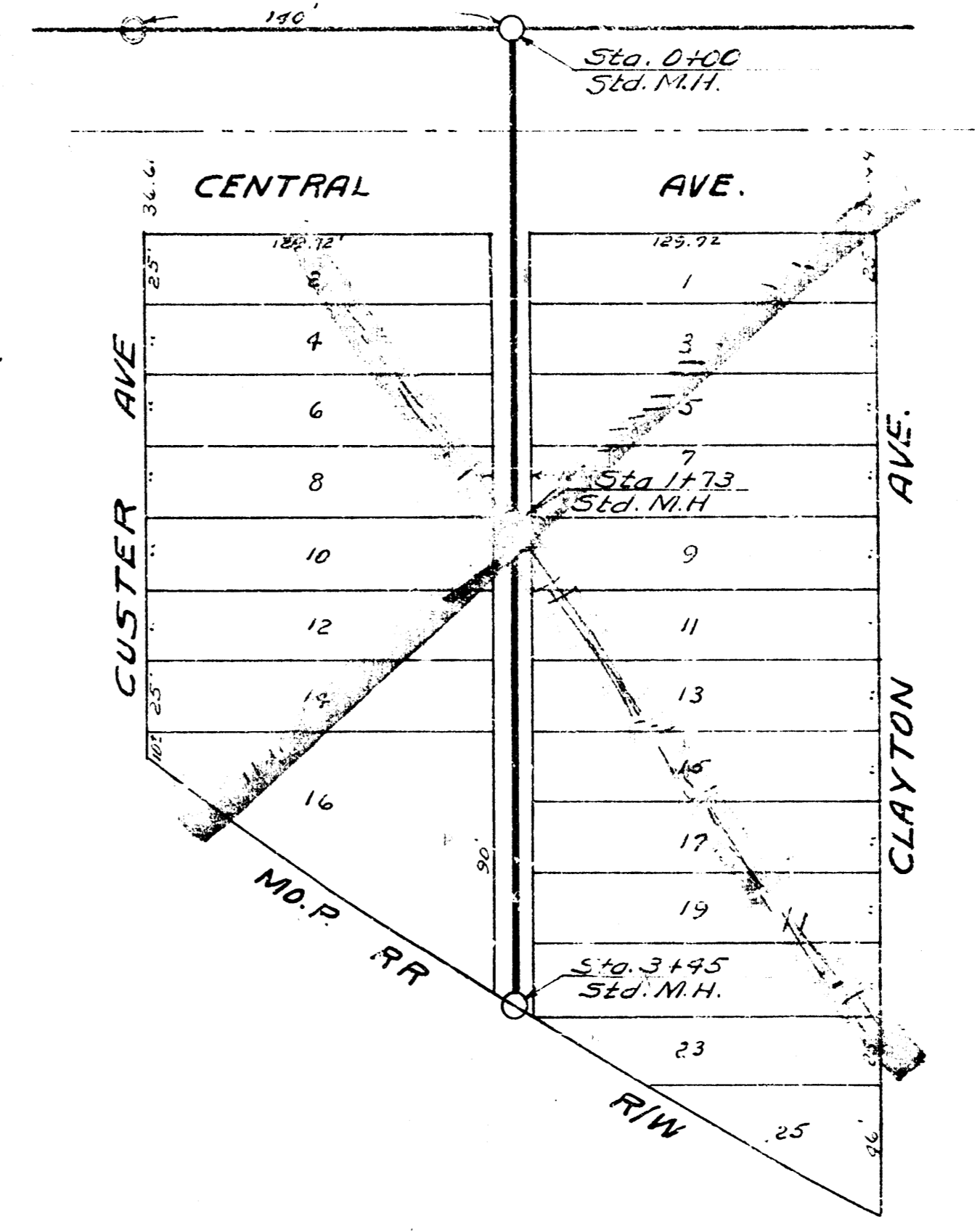
3" VCP
0.10%
Fl. 111.00
Fl. 111.19



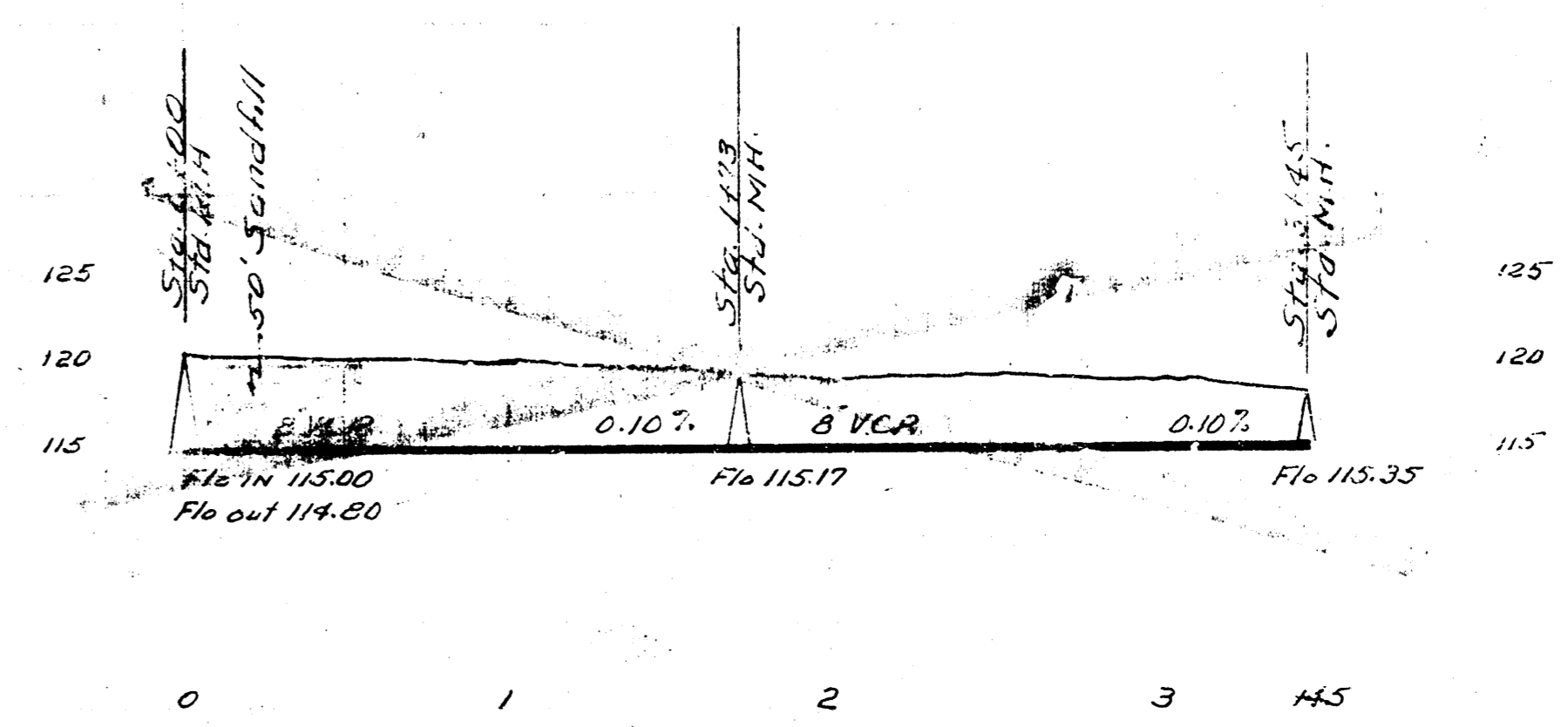
B.M. 113.01 Iron in thimble N.S. MURDOCK & MATHEWSON



3" VCP
0.10%
Fl. 105.20
Fl. 105.36



BM. 121.29 'M' in Mueller F.P. SE Cor. Clayton & Central



3" VCP
0.10%
Fl. 114.80
Fl. 115.37

LAT. 2 DIST. 9 S.S. 12
CITY OF WICHITA KANSAS
B.E. SMITH CITY ENGINEER
Proj. No. C-24-13



LAT. 40 S.S. 20
CITY OF WICHITA KANSAS
B.E. SMITH CITY ENGINEER
Proj. No. C-24-9

LAT. 35 DIST. A S.S. 21
CITY OF WICHITA KANSAS
B.E. SMITH CITY ENGINEER
Proj. No. C-24-16

