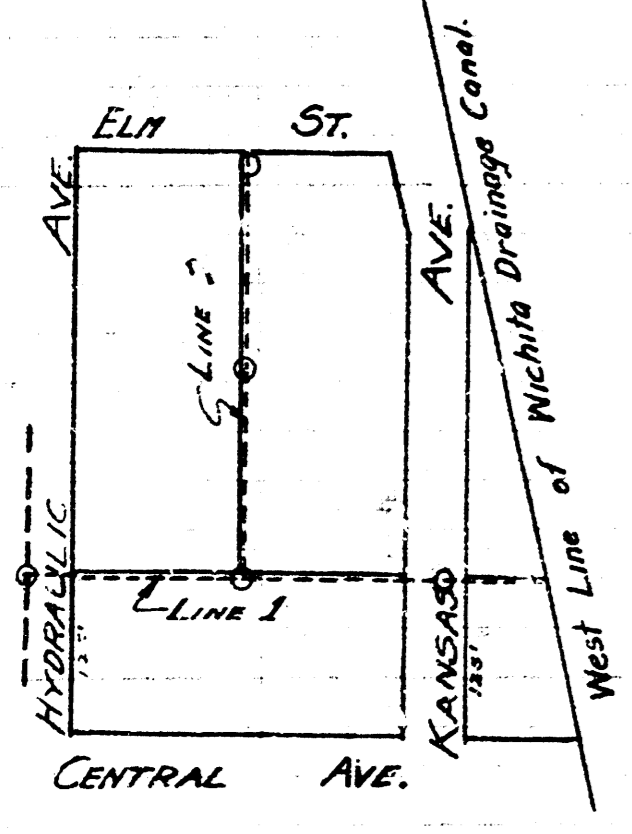
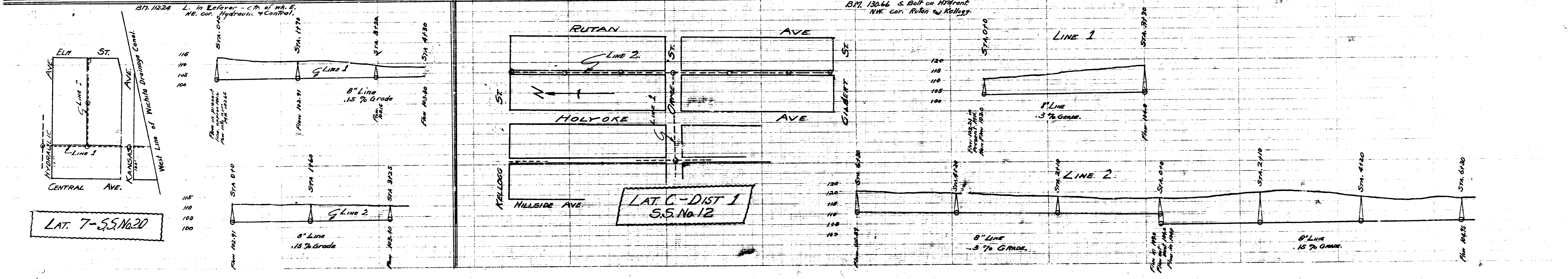
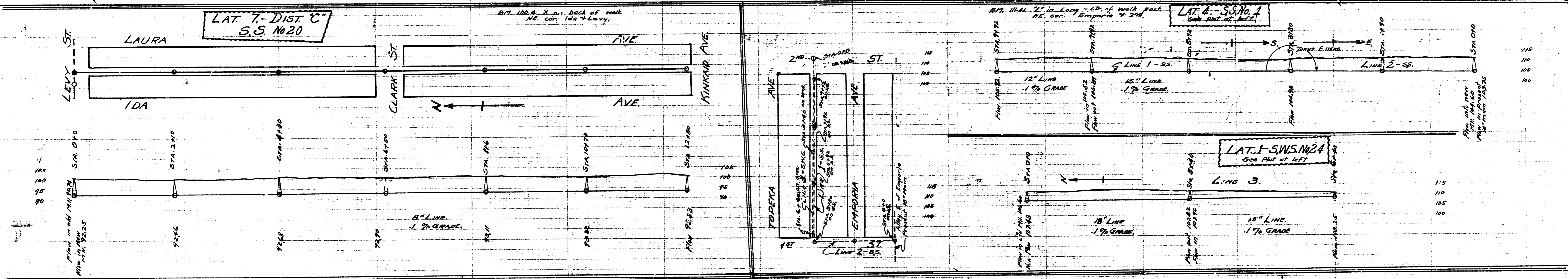
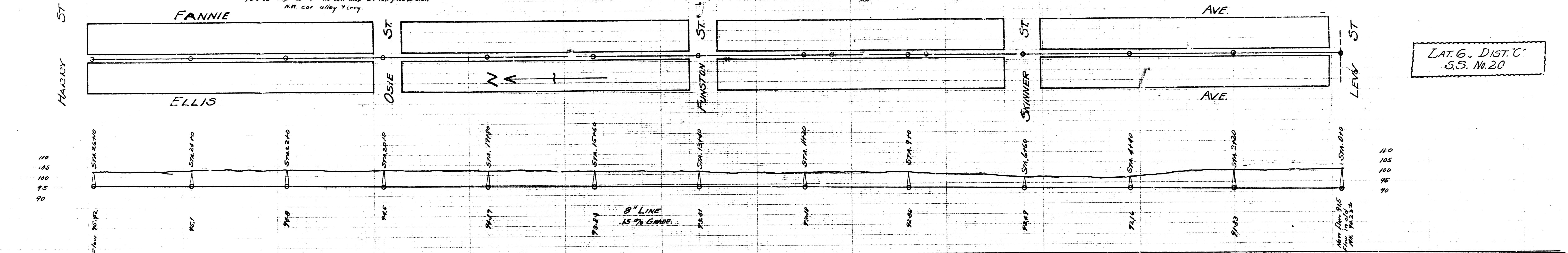


B.M. 10180 "X" in Ketcher St. of walk SE cor. Fannie & Harry
104.53 Top of 1st Mason Step on 7th pub. (a side)
N.W. cor. alley & Levy.

LAT. 6, DIST. C
S.S. No. 20



LAT. 7-S.S. No. 20

LAT. C-DIST 1
S.S. No. 12