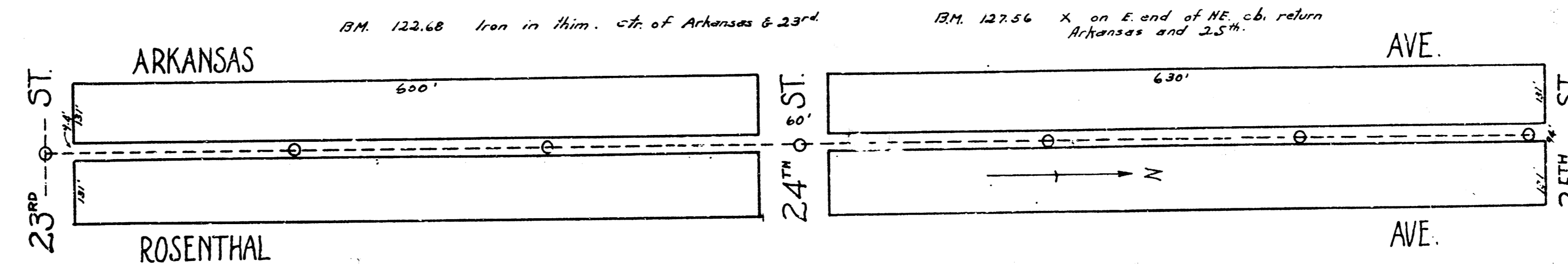
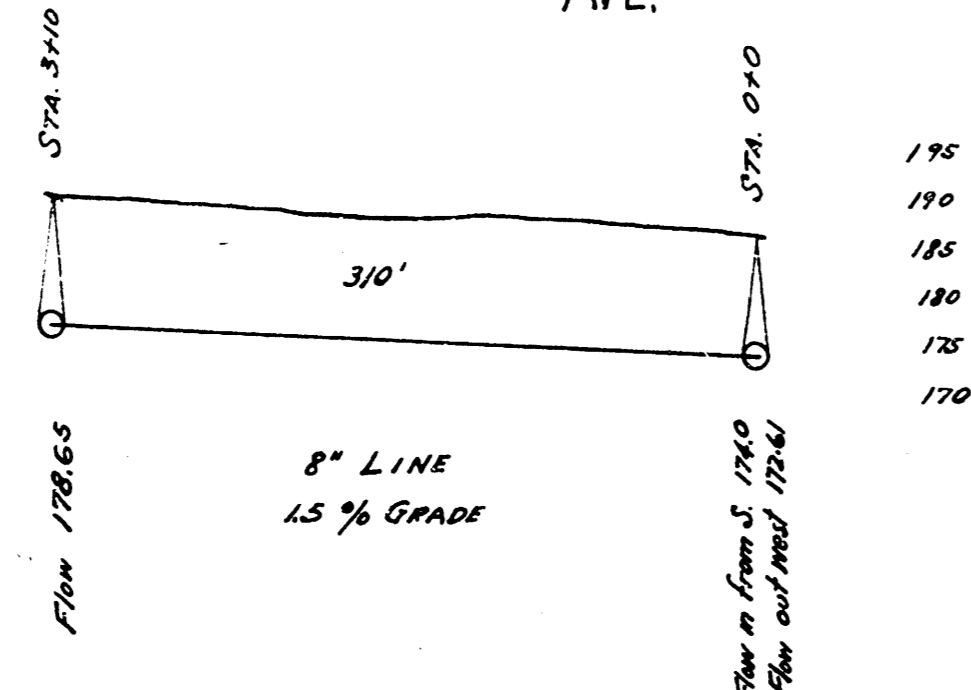


B.M. 1281 T. in Thacker, bk. of wh. E. NE. cor. Broadview & Elm.

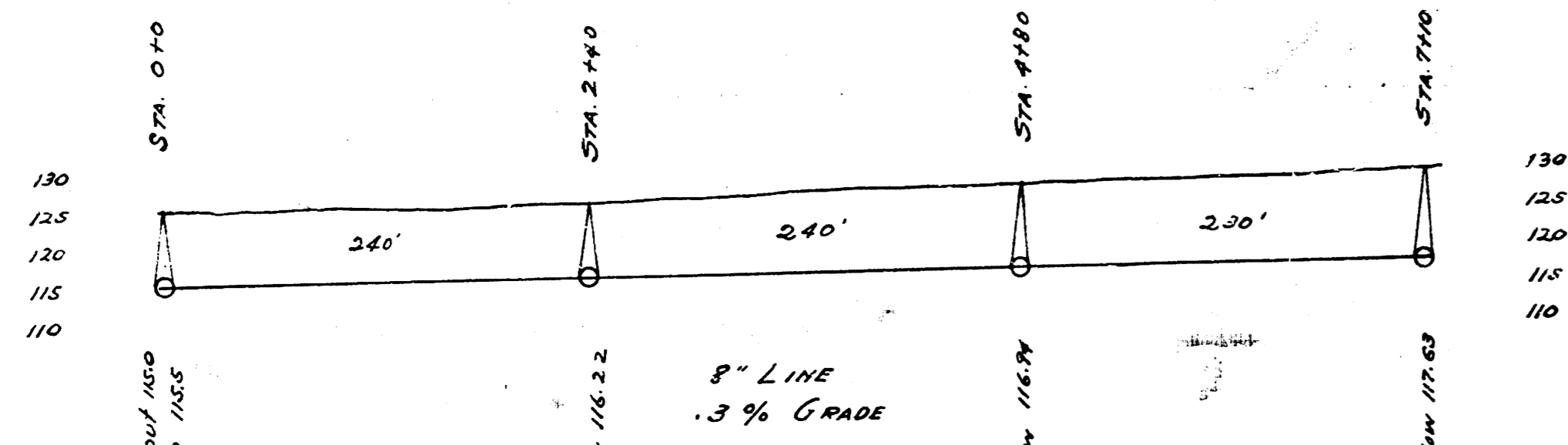
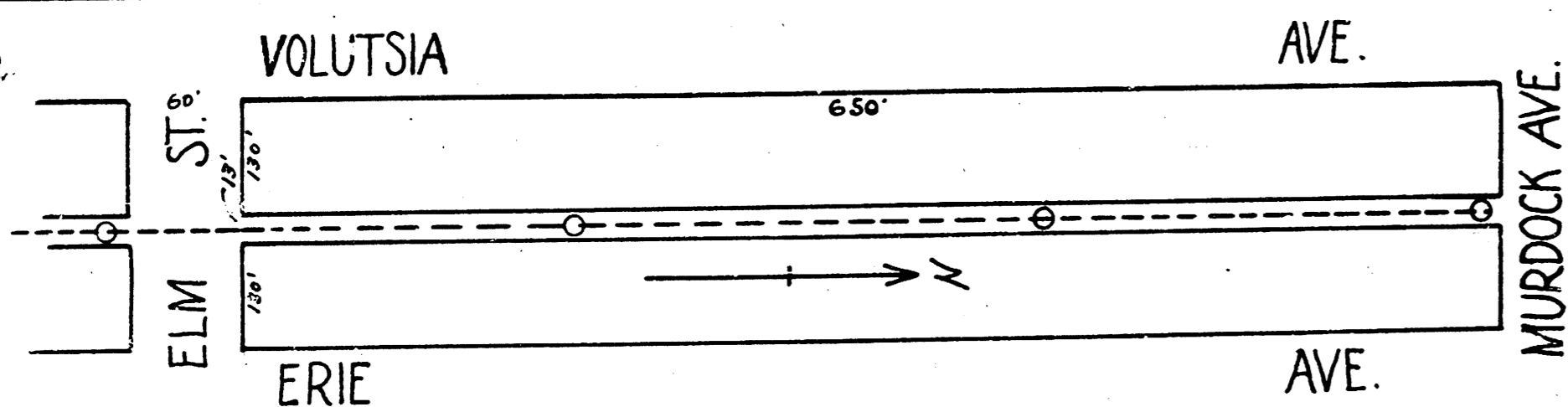
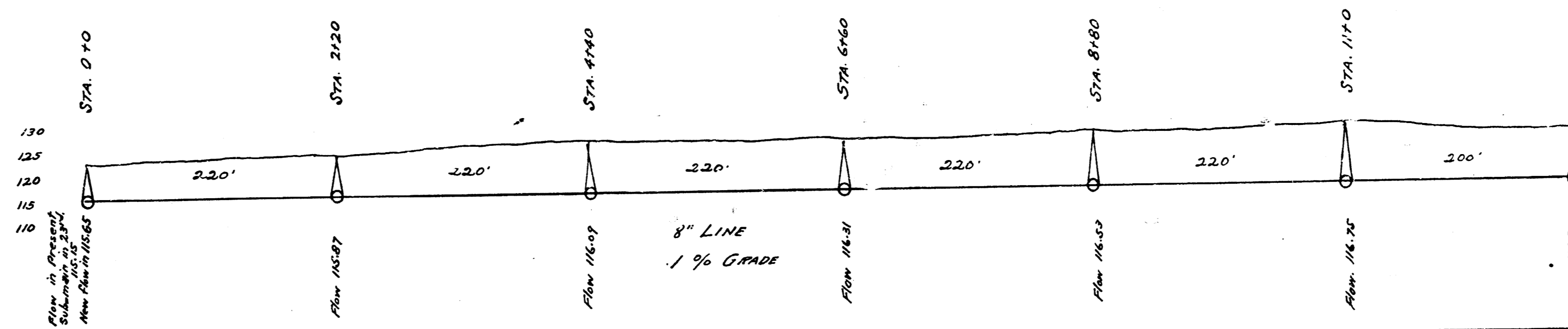
LAT 3 ~ DIST. D ~ S.S. No. 12



B.M. 122.68 Iron in Lim. ct. of Arkansas & 23rd

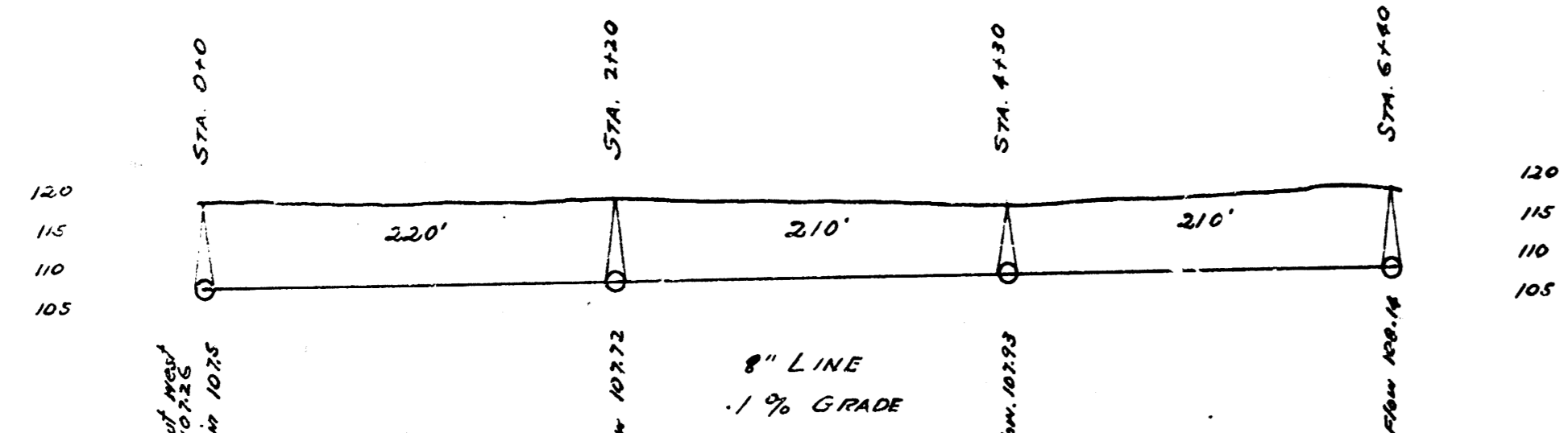
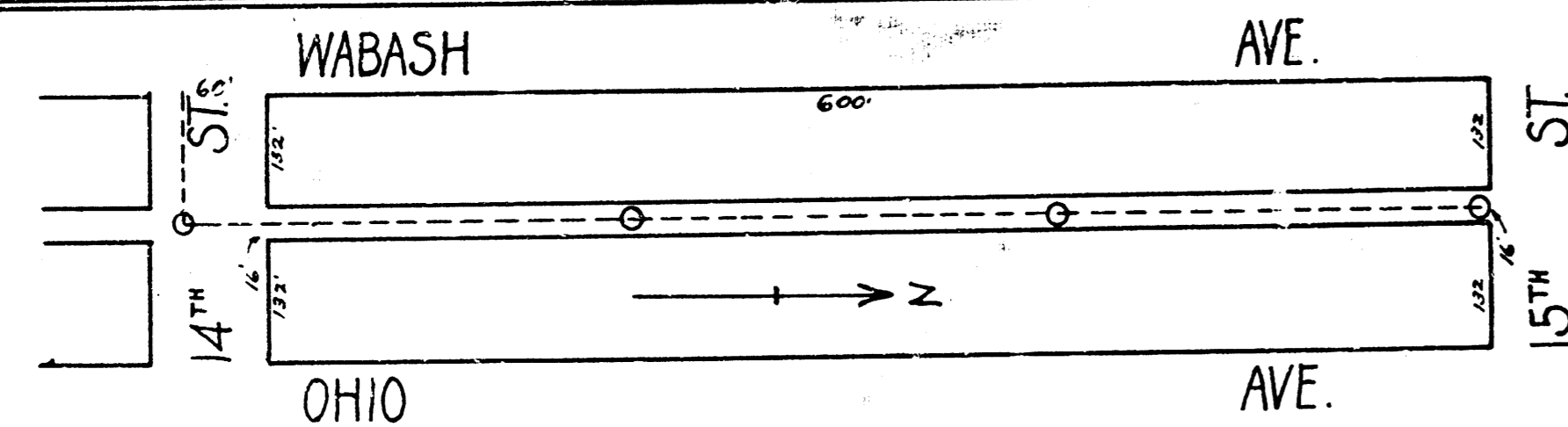
B.M. 127.56 X on E end of NE cb. return Arkansas and 23rd

LAT. C ~ DIST. T ~ S.S. No. 20



B.M. 12588 X on curb near S. end of SW alley; turn - alley to E. side

LAT. 4 ~ DIST. D ~ S.S. No. 12



B.M. 11779 N. in Keeler, ct. wh. N. NE. cor. Wabash & 14th

LAT. 11 ~ S.S. No. 20