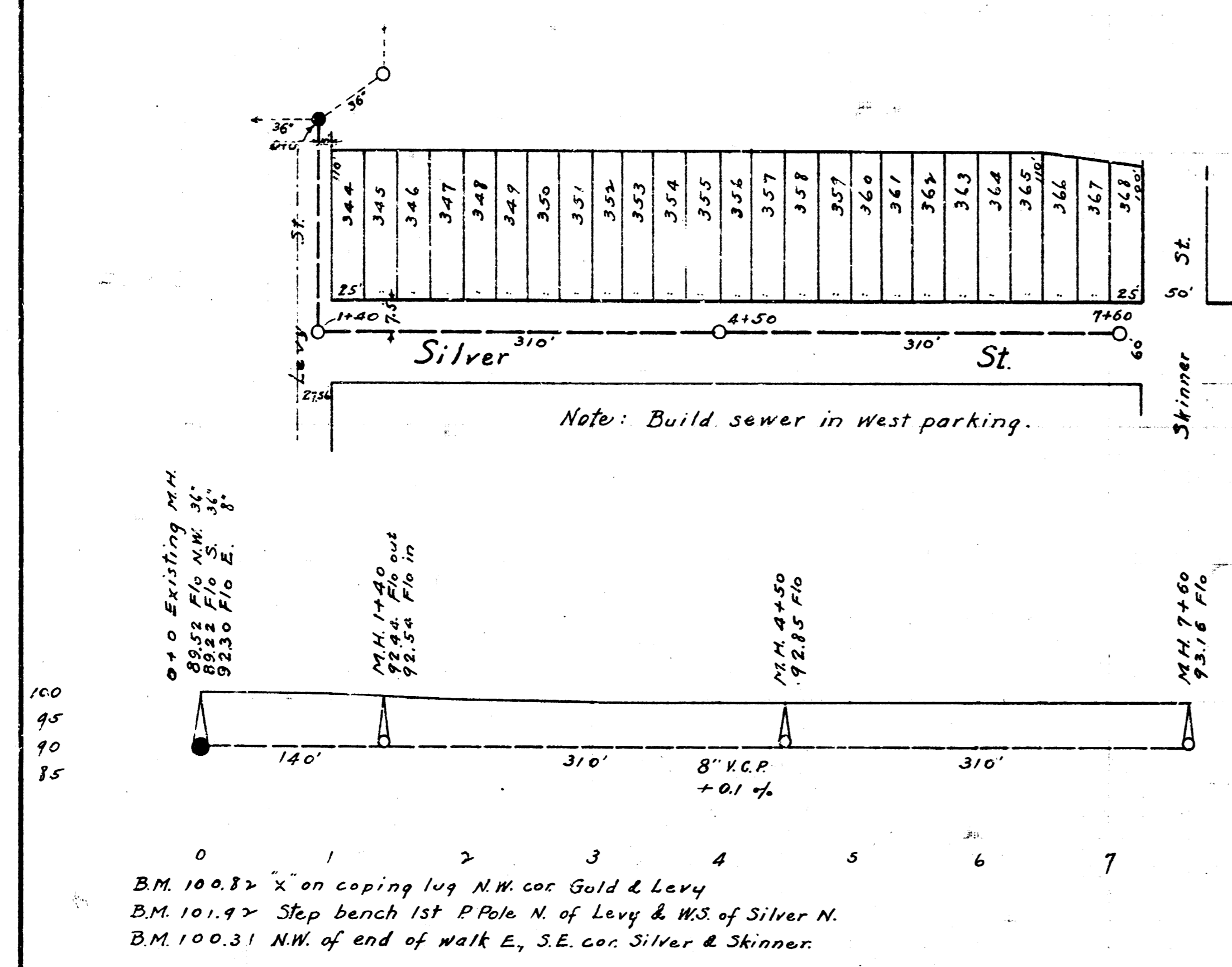
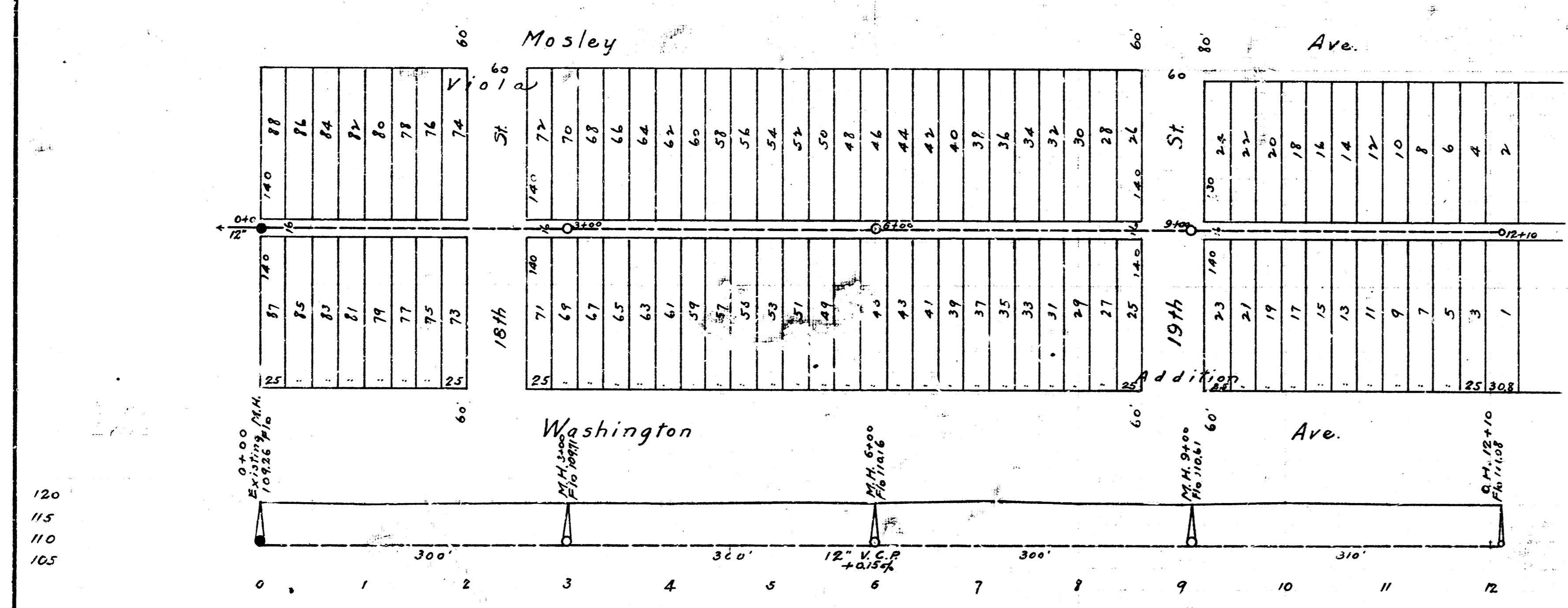


LAT. 22, DIST. C, SS #20



BM. 100.82 'x' on coping lug N.W. cor. Gold & Levy  
 BM. 101.97 Step bench 1st P.P. N. of Levy & W.S. of Silver St.  
 BM. 100.31 N.W. of end of walk E, S.E. cor. Silver & Skinner

Lat 22, SS #20



BM. 118.88 'x' in Keeler on push block S. N.E. cor. Mosley & 17th.  
 BM. 120.40 'x' in Alley, Step bench in P.P. S.S. of 19th bet Wash. & Mosley

CITY OF WICHITA, KANSAS  
 PUBLIC SERVICE DEPARTMENT  
 ENGINEERING DIVISION  
 L.K. WHITE, CITY ENGINEER  
 DR. BY C.H. MILLS AUG. 1945