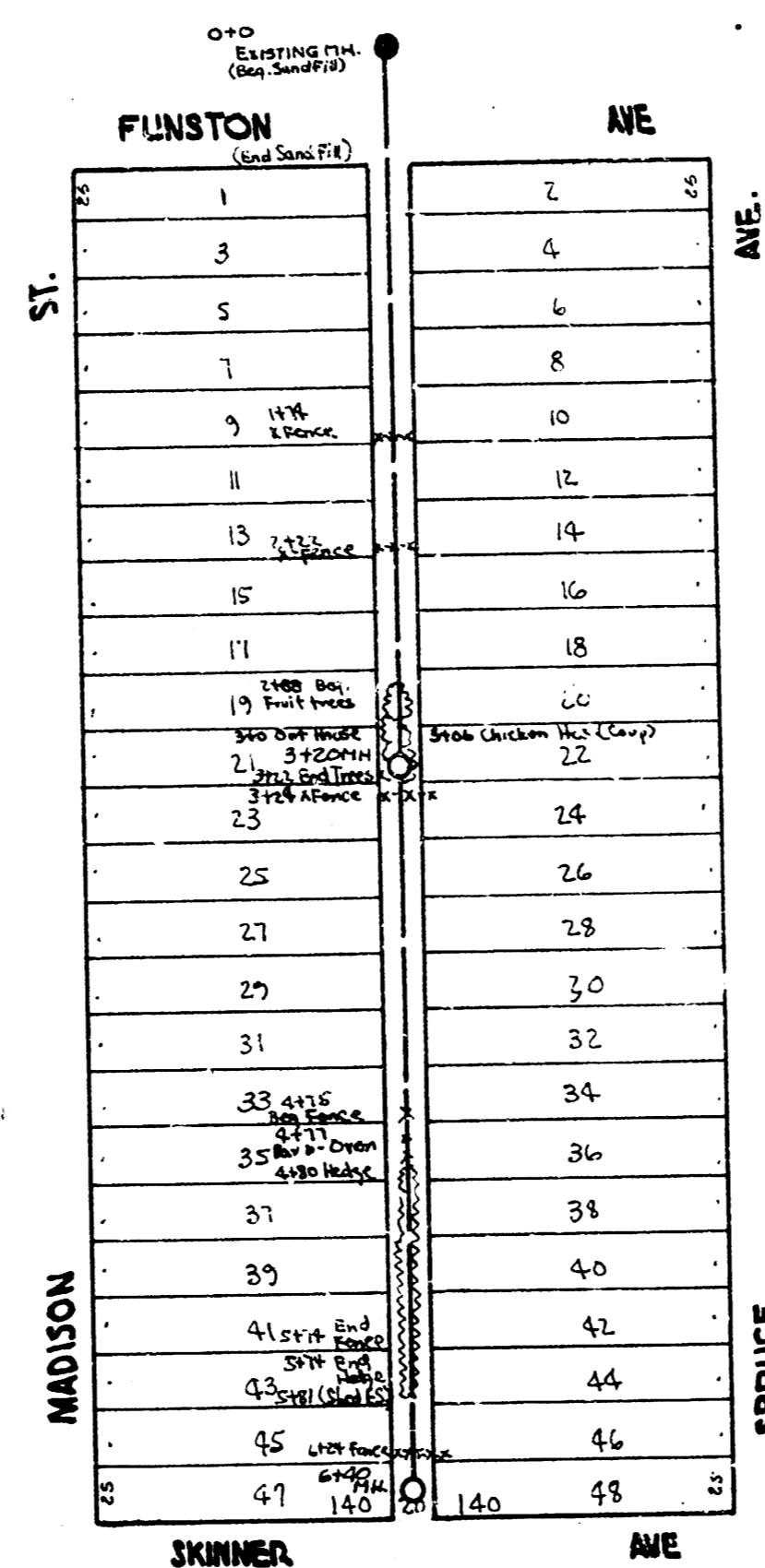
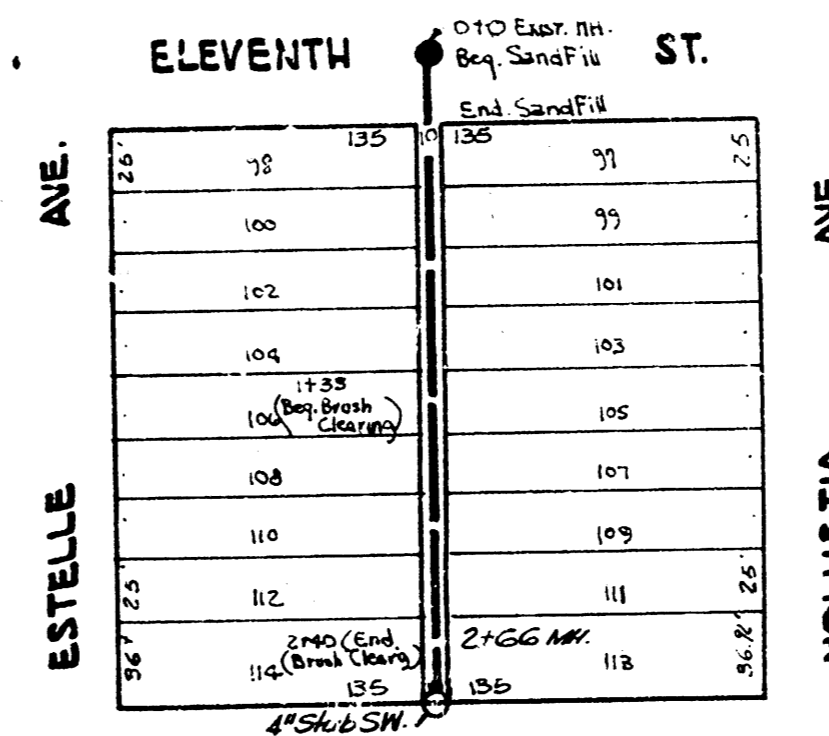


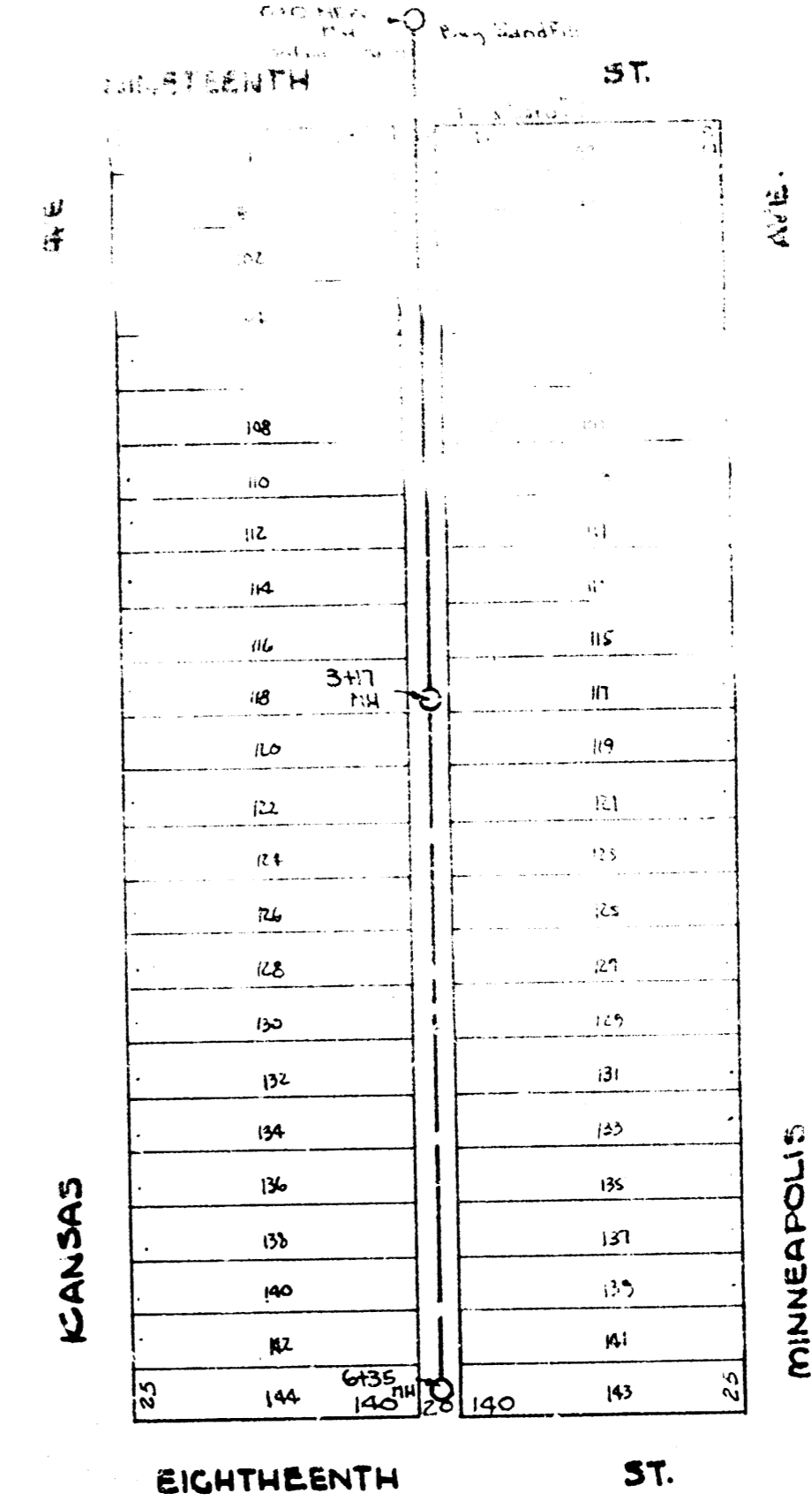
LAT. 14, DIST. B, SS* 20
 SW. 74.32 E. Side of Rd. So. Side Scott (Spoken Base of Rd)



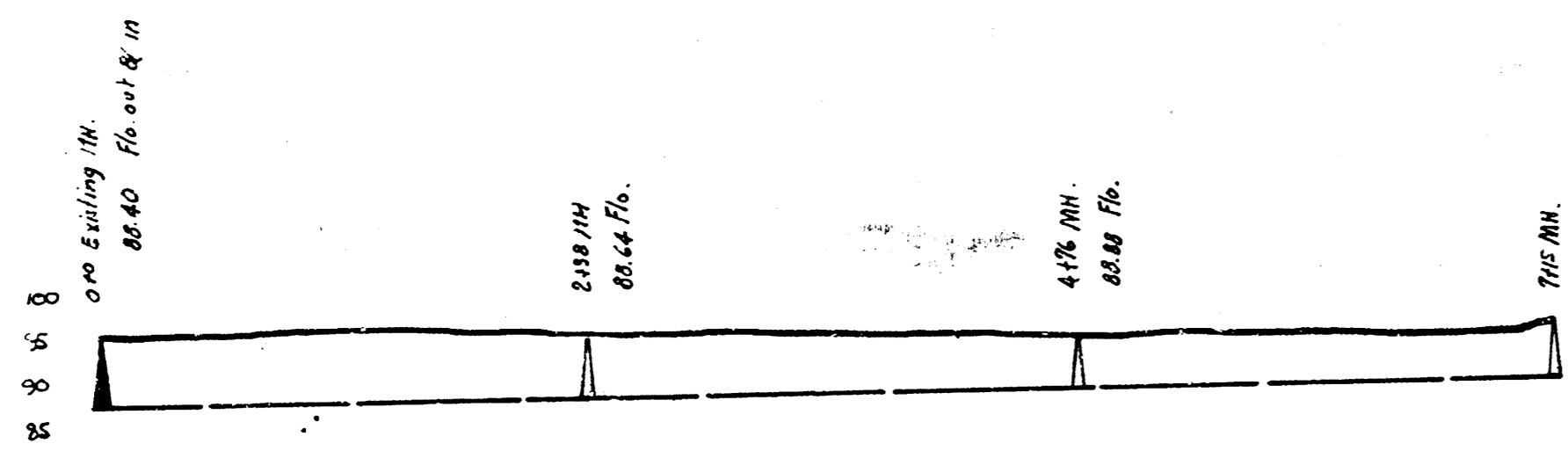
LAT. 10, DIST. AS, SS* 12
 SW. 79.88 G. in Globe Co. End. N. 46. Spruce & Funston



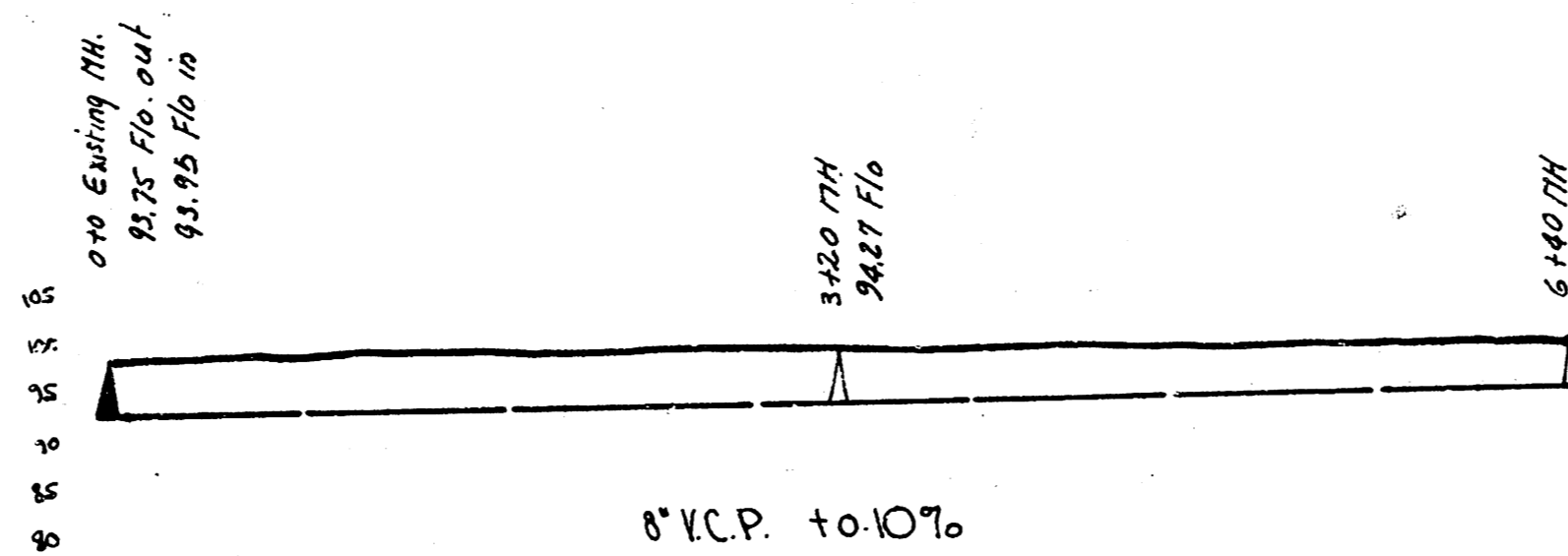
LAT. 12, DIST. E, SS* 12
 SW. 123.11 No. Rim 114. in Eleventh Street



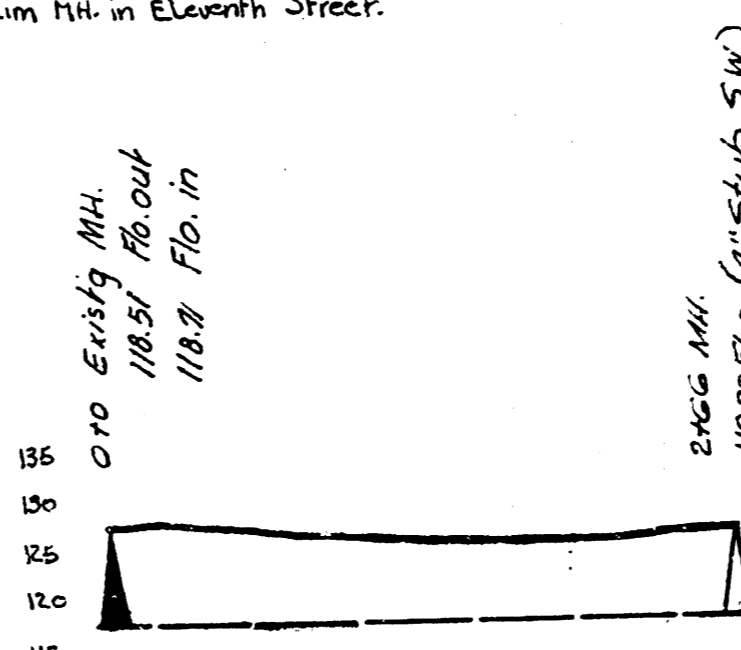
LAT. 17, DIST. T, SS* 12
 SW. 120.23 No. Rim of So. Spruce 134. f Hydraulic



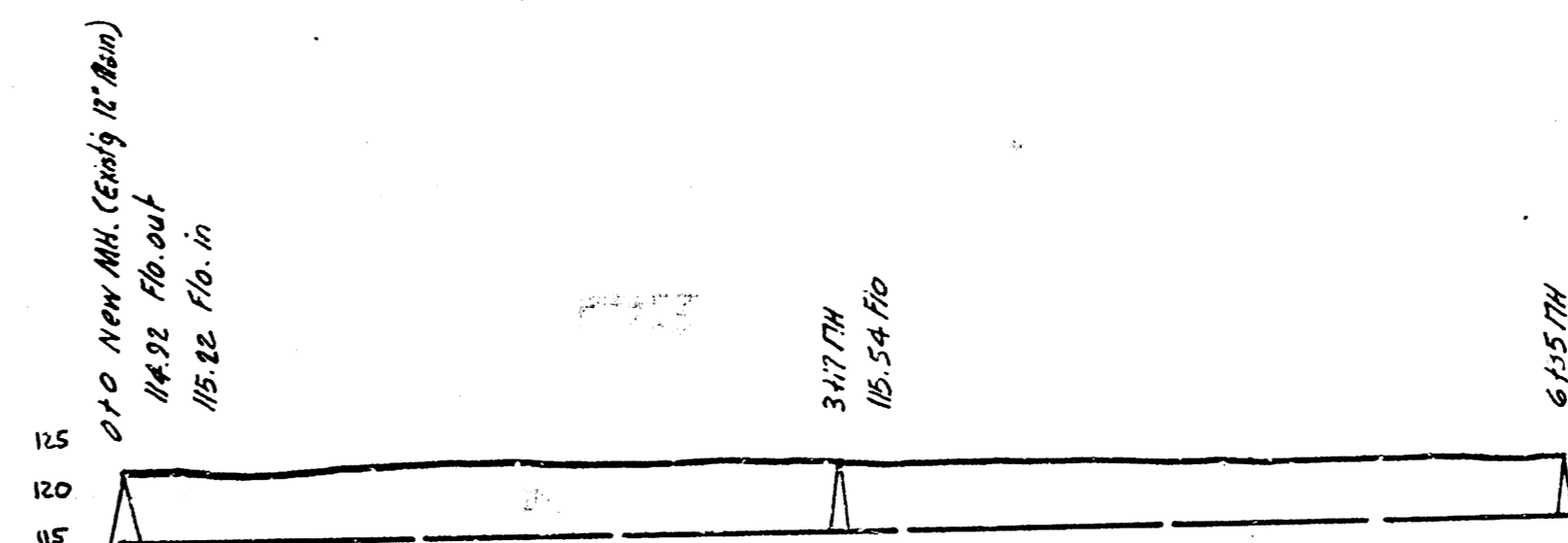
LAT. 14, DIST. B, SS* 20



LAT. 10, DIST. AS, SS* 12



LAT. 12, DIST. E, SS* 12



LAT. 17, DIST. T, SS* 12

LAT. 14, DIST. B, SS* 20 — LAT. 10, DIST. AS, SS* 12
 LAT. 12, DIST. E, SS* 12 — LAT. 17, DIST. T, SS* 12
 CITY OF WICHITA, KANSAS
 L.K. WHITE - City Engineer
 1940