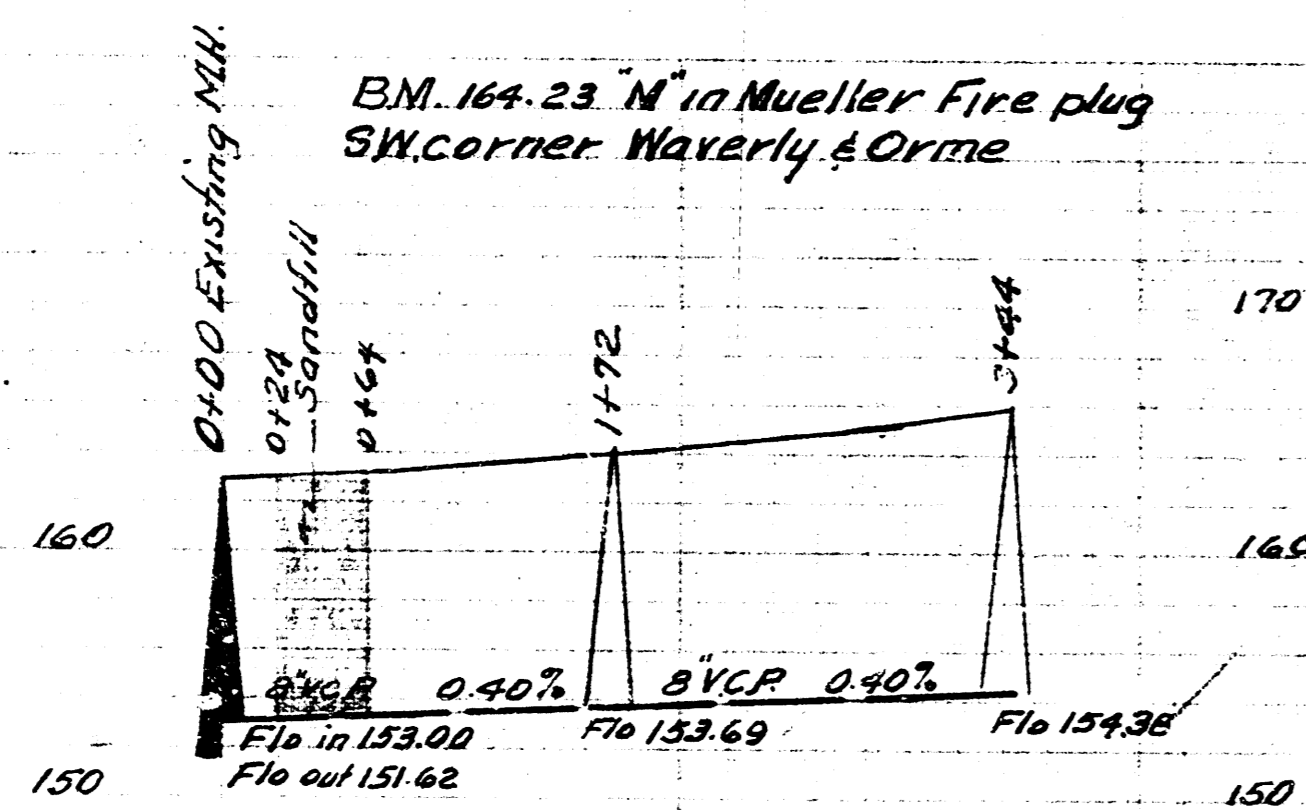
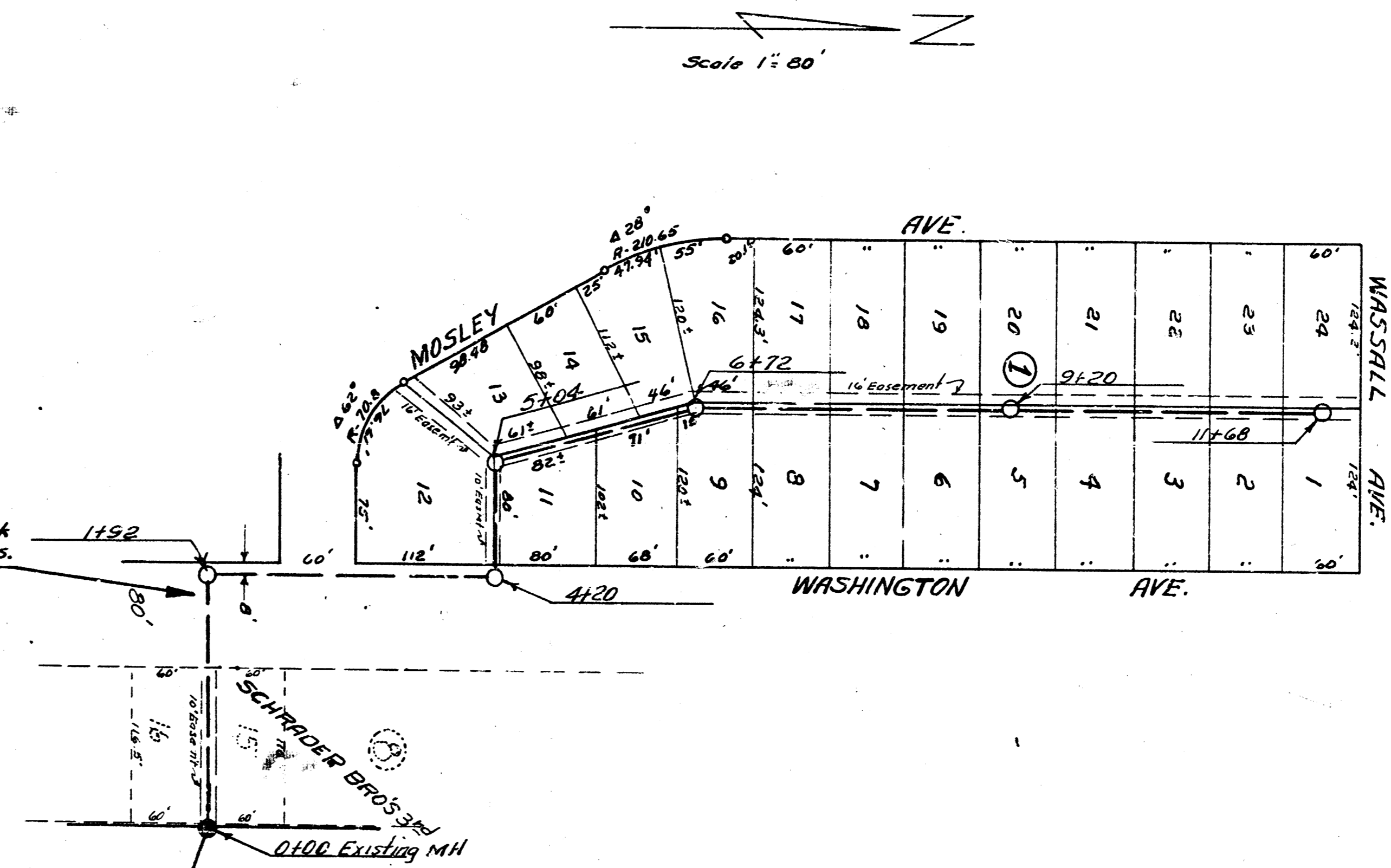
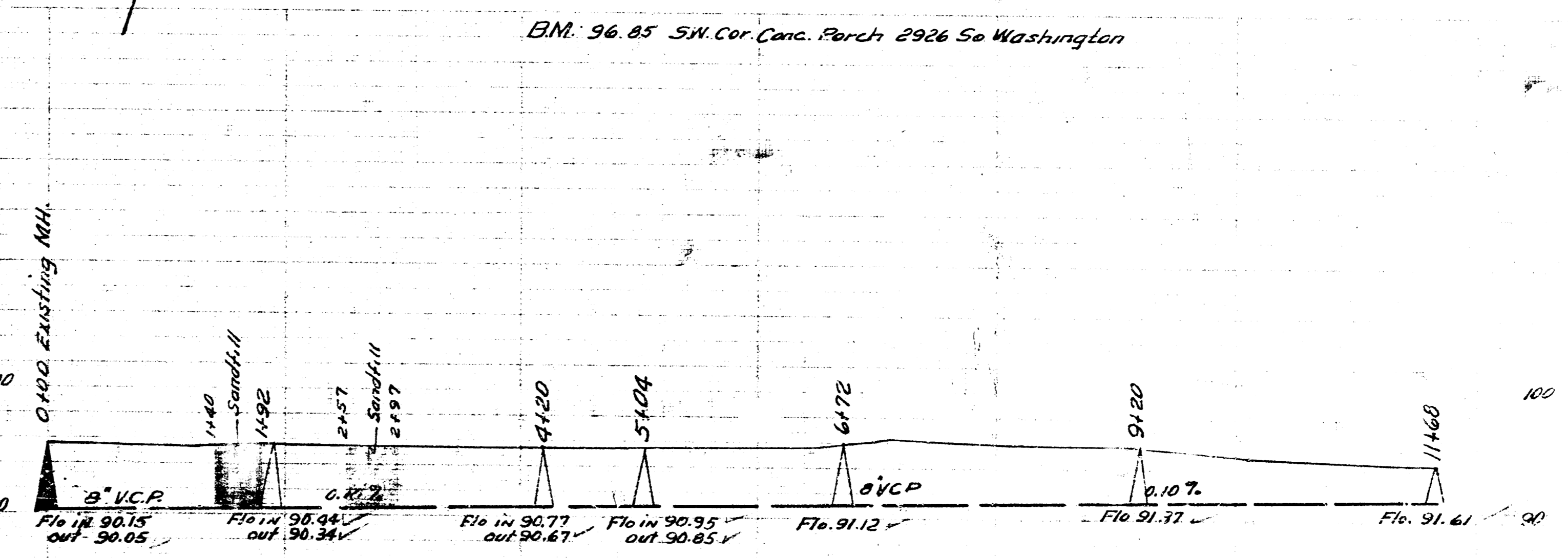


Note: An 8" VCP has been laid across Washington. Engineer to check all flow lines before setting grades.



Date 3-17-53
 Drawn by L. McClain
 Checked by Breen No. 677



Note: All line with less than 30° of cover shall be excavated.

Date 3-18-53
 Drawn by L. McClain
 Checked by Breen No. 927

LAT. 12 SUB. 3, W. 15.
 CITY OF WICHITA KANSAS
 BE SMITH CITY ENGINEER
 Proj. No. C-23-15

LAT. 20, DIST. A 55.20
 CITY OF WICHITA KANSAS
 BE SMITH CITY ENGINEER
 Proj. No. C-23-16

