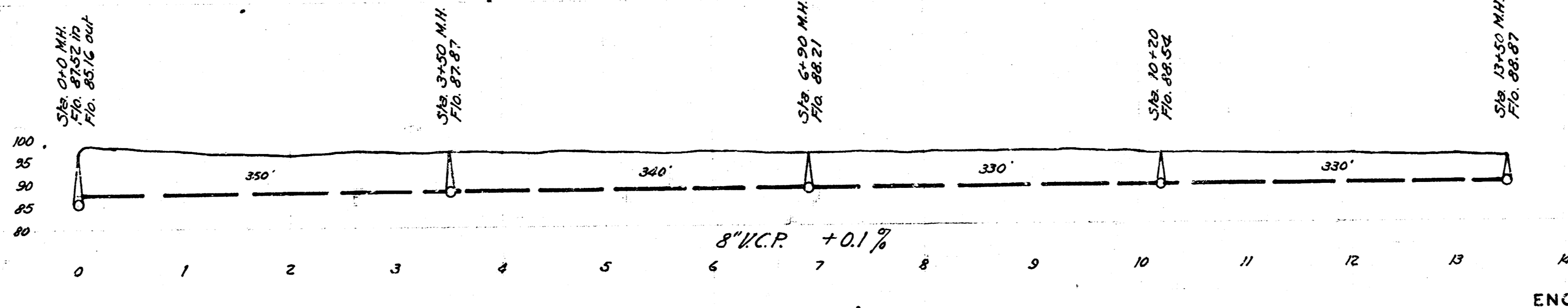
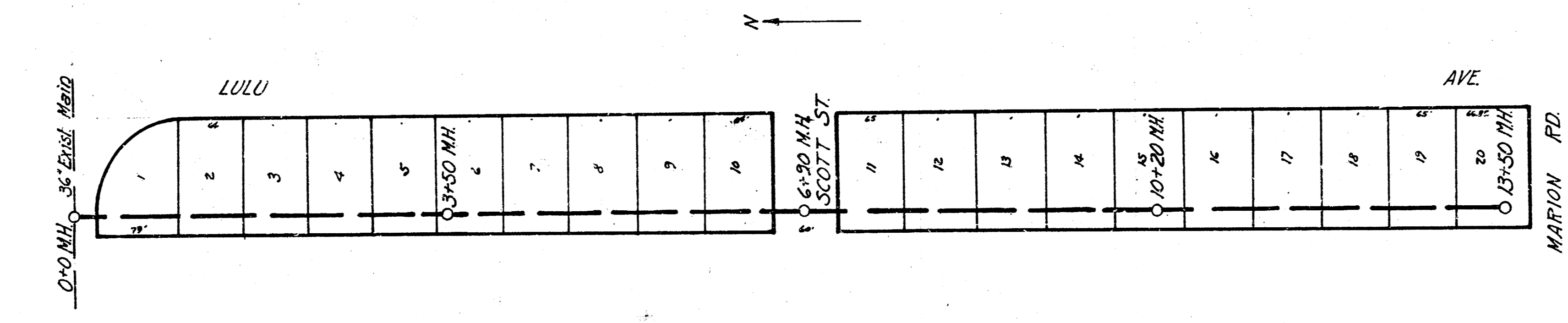
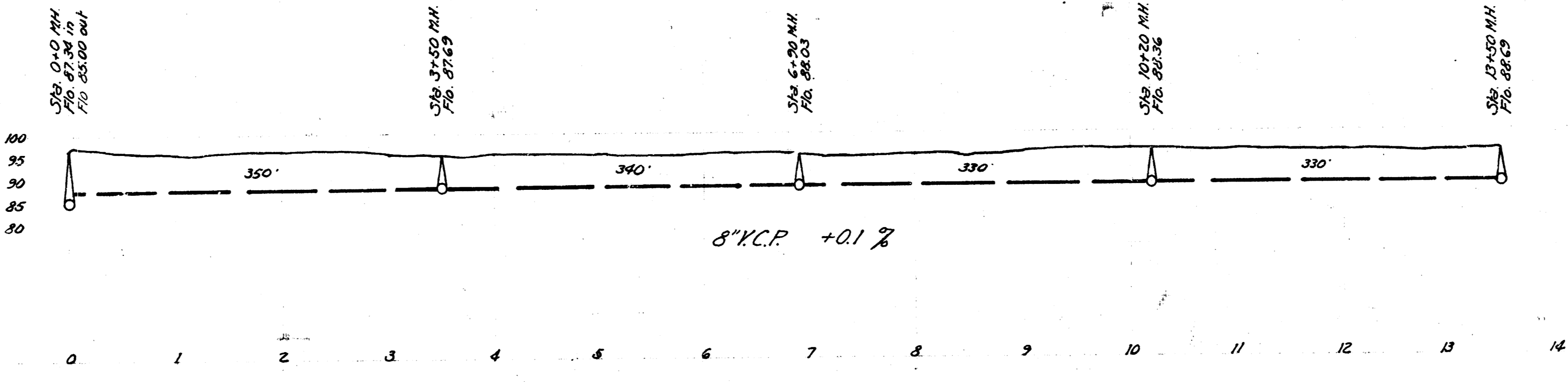
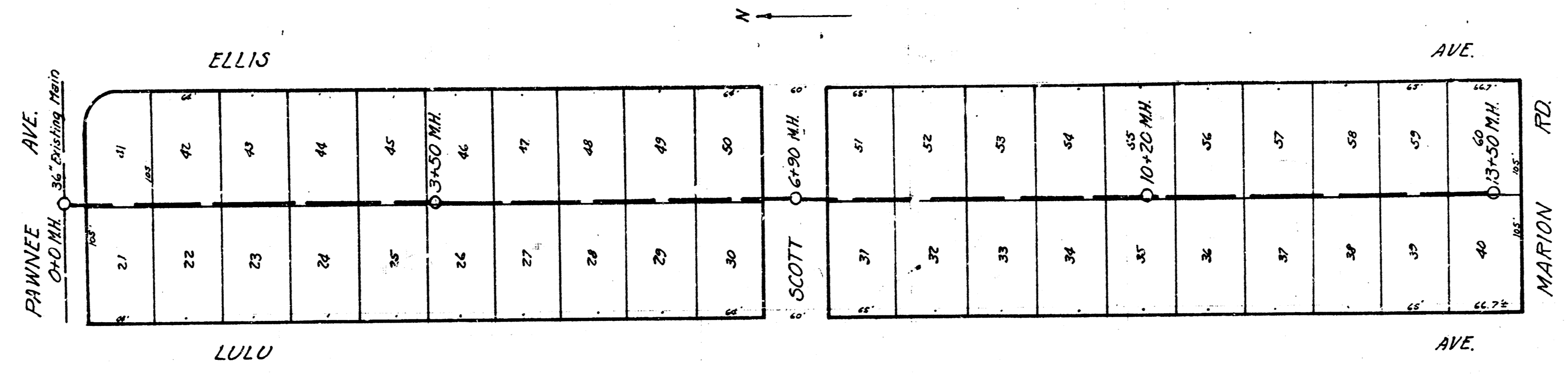


LAT. R. DIST. B. S.S. # 20
 WICHITA, KANSAS



B.M. 99.16 Step bench in T.P. S.S. Pawnee at Lulu North

ENGINEERING DEPARTMENT
 CITY OF WICHITA, KANSAS
 P.L. BROCKWAY CITY ENGINEER
 B.E. SMITH ENGINEER OF DESIGN
 SEPT. 1942 SCALE 1"=80'

